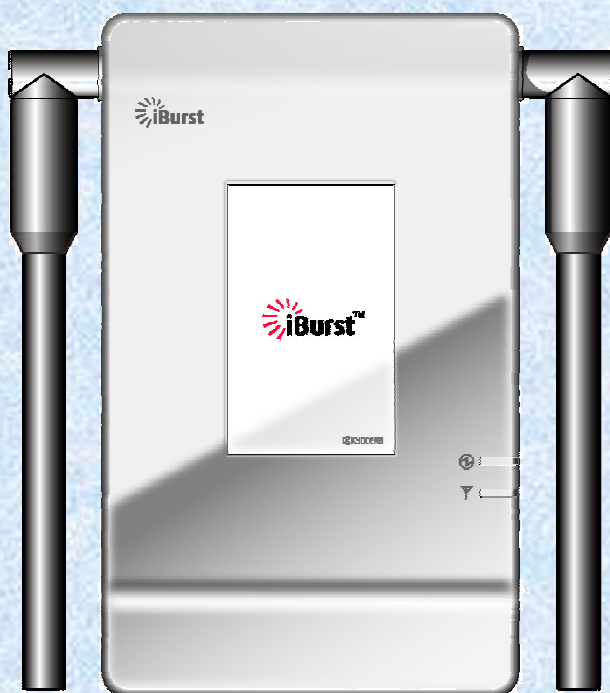


iBurst Terminal User's manual

For Mac OS X 10.1.5 to 10.5



Approved	Checked	Designed
Koyama	Yamamoto	Igarashi

Reference:	S03T-EE-002
Revision:	1.01
Date:	August 7, 2008

Revision History

Revision	Author	Date	Detail
1.00	Igarashi	February 28, 2008	First Edition
1.01	Yamamoto	August 7, 2008	Add FCC information

Copyright © Kyocera Corporation 2006 - 2008

CONTENTS

Safety Precautions on iBurst Terminal.....	4
Chapter 1 Introduction	8
Components List	9
Pictures of Accessories	9
Requirements on your PC	9
Indicators	10
Outlook to use the iBurst Terminal.....	11
Chapter 2 Setup Procedure.....	12
Connection Settings for Mac OS X 10.1.5-10.4	13
Connection Settings for Mac OS X 10.5	17
Chapter 3 Utility Software	22
Status Indication over Ethernet	23
Appendix	29
Maximum data rate on Mac	30
FCC Compliance Statement.....	31
FCC RF Radiation Exposure Statement.....	32

Safety Precautions on iBurst Terminal

- Things you must know
 - When using the product, use it correctly according to the safety precautions.
 - The product uses particular radio frequency band tuned for the network operator.
 - The safety precautions, hardware, software, and the design of the product may be changed in the future without any announcement to the customers.

- About use restriction
 - The product is designed as an OA apparatus for home use. Please use it neither in the medical apparatus directly to affect a human life, nor the system of which very high reliability is required.
 - Do not use the product in the zone where the wireless machines are forbidden, such as an airplane and a hospital. An electric device and medical apparatus are affected and it becomes the cause of the accident.

- About Qualification
 - Our company does not take any responsibility about the damage produced by use under the conditions such as natural disasters, earthquake, flood, fires, misuse by intent or carelessness or other than the responsibility of our company.
 - Our company does not take any responsibility about the damage produced by external factor, failure, malfunction, and fault of product, such as loss of enterprise profits, enterprise discontinuation, change and disappearance of the contents of memory etc.
 - Our company takes no responsibility about the damage produced by not keeping the written contents of an owner's manual.
 - Our company takes no responsibility about the damage produced from incorrect operation in combination with the connection apparatus and software in which our company is not participating etc.

-
-
- iBurst™ is a registered trademark of ArrayComm, Inc.
 - Windows and Windows Vista are registered trademarks of Microsoft Corporation.
 - Mac OS X is a registered trademark of Apple Inc.
 - In addition, the name of the software carried in this document and peripheral equipment is each company's trademark, or a registered trademark.

- For your safety

----- **Danger** -----

(If used improperly, may cause death or serious injury.)

- Do not use with an abnormal condition, such as with emission of smoke or odor. It may cause fire or electric shock.
- Do not disassemble or remodel the product. It may cause fire or electrical shock.
- Do not use or place the product at places with high humidity such as in the bath room or near the humidifier. It may cause fire or electric shock. And do not touch the product with wet hands.
- Do not use the product with power supply other than AC100 to 240V. It may cause fire or electric shock.
- Do not plug too many leads into a single socket with extensions such as table taps, divided outlets, and divided sockets. It may cause fire or electric shock. Moreover, make sure that the total current does not exceed the capacity of the power supply. Otherwise, may cause fire or electrical shock.
- Do not damage, break, modify, bend, pull, twist, or bundle the AC cord. In addition, if a heavy material is placed onto the cord or it is heated, the cord may break and cause fire or electric shock.
- Securely insert the plug into the outlet. If a metal object edges the teeth of the plug, it may cause fire or electric shock. When pulling out the plug from the outlet, be sure to hold onto its head. Pulling the cord can damage itself.
- When you change the installation place of the product, pull out the plug from the outlet and confirm that PC is completely separated from it. Otherwise, the cord may be damaged and cause electric shock or fire.
- Before inserting the plug into the outlet, check that there is no dust on its edge and head. As dusts can easily enter between the plug and the outlet, they may cause fire or electric shock. Pull out the plug from the outlet, at least once in a half year or a year, and clean/maintenance.
- Use the AC/DC adapter enclosed with the product.
Input:100-240V~/50-60Hz/0.6A
Output: 9V \equiv 1.7A
Type: 3A-161DA09 (ENG)
Usage of other AC/DC adapters may cause fire or electric shock.
- Do not place things or put cloth on the top of the plug. It may heat and break the plastic and/or the rubber, causing fire or electric shock.

----- **Warning** -----

(If used improperly, may cause disability or physical damage.)

- Do not give a shock strong against the product, such as dropping and throwing. It becomes the cause of failure. Moreover, do not ride on the product. It may become the cause of an injury.
- Do not put the product under direct sunshine or near equipment with high temperature such as a stove and a heater. It may raise the temperature of the interior and cause fire.
- Do not put the product at places with an extreme fluctuation of temperature, such as near the air conditioner or a heater. The dew condensation may occur in the interior and cause fire, electrical shock, and malfunction.
- Do not put the product at places with oil and steams such as in the kitchen. In addition, do not put it at dusty places and places where metal powder and toxic gas occur. It may cause fire or electric shock.
- Do not place the product on unstable places such as on an unsteady desk or slanted surfaces. In addition, do not put any object on the product. It may loose balance and tumble, or fall and cause injury.
- When the thunder occurs in near, do not use the product and its peripheral equipment. It may become the cause of an electric shock.
- If suspending the use for a long time, pull out the plug from the outlet.
- Do not use the AC cord with an extension cord. It may cause fire.
- For maintenance, pull out the AC plug from the outlet for safety. Do not wipe the product with benzene, thinner, or alcohol. It may cause the product to decolorize or deform. If the product be stained, put some neutral detergent on a dry cloth and wipe gently.
- Do not connect electricity supplied LAN cable to the product. It may cause smoke or fire.
- Do not touch the connector pins directly with your hands. Static electricity may affect the components. As static electricity is created from both the cloth and the human body, before putting or removing the product, release static electricity by touching a metal object such as a small cabinet.
- Do not use it in the intense place of vibration. It becomes the cause of failure.

----- **Caution** -----

(If treated improperly, the equipment may not perform or work properly.)

- Do not put the product at low temperature. The product may not function properly.
- Do not put the product on the top of magnetic objects and places where electromagnetic waves occur. This includes electrical appliances, AV, and OA (microwave oven, speaker, TV, radio, fluorescent light, inverter air conditioner, and electric kitchen appliances). The product will not be able to make communication properly if effected by magnetism or electronic noise. Putting the product near TV or radio may cause RF receive error.
- The product lifetime may shorten if used at places with hydrogen sulfide such as at a hot spring.
- Data communication will be disabled or a data file may corrupt if the PC is turned off or the product is separated from the PC during the communication. Important data must be verified against the original data.
- For fixing the product, use the enclosed fixture.
- When connecting the product onto PC, use the enclosed LAN cable.

Chapter 1

Introduction

This chapter describes what should be confirmed before using iBurst Terminal.

Components List

The table below shows the list of components. Please confirm items in the package.

Component	Notes	Q'ty
iBurst Terminal	Unit of Desktop model Refer to the pictures shown in next page.	1
AC/DC Adapter	Input: 100 - 240V AC/ 50 - 60Hz/ 600mA Output: 9V DC/ 1.7A Cable Length of output side: 2m * See picture 1 below.	1
Power Cable	Length: 2m	1
Ethernet Cable	Type: Straight through/ Category 5 Length: 2m	1

Pictures of Accessories

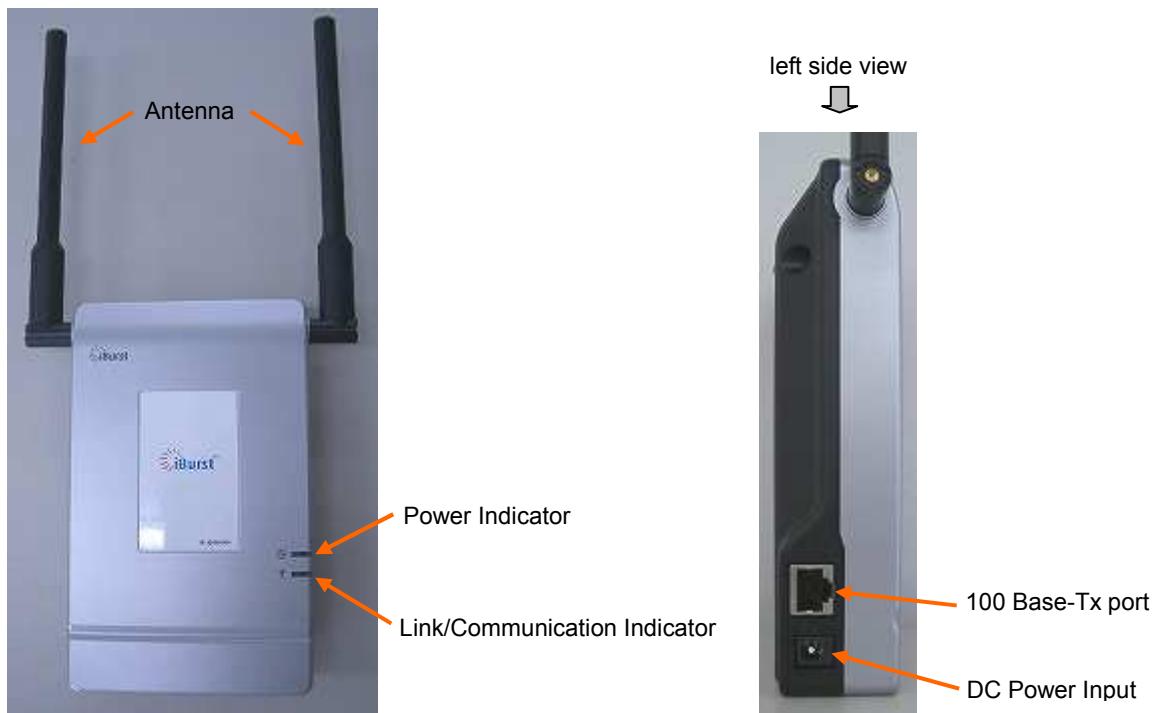
Picture 1
AC/DC Adapter



Requirements on your PC

- version 10.1.5 to 10.5 of Mac OS X; or
PC/AT Compatible PC with Windows Vista/XP/2000 (x86 based).
(Refer to the manual for Windows.)
- 10Base-T or 100Base-Tx Ethernet port or compatible.

Outlook of iBurst Terminal



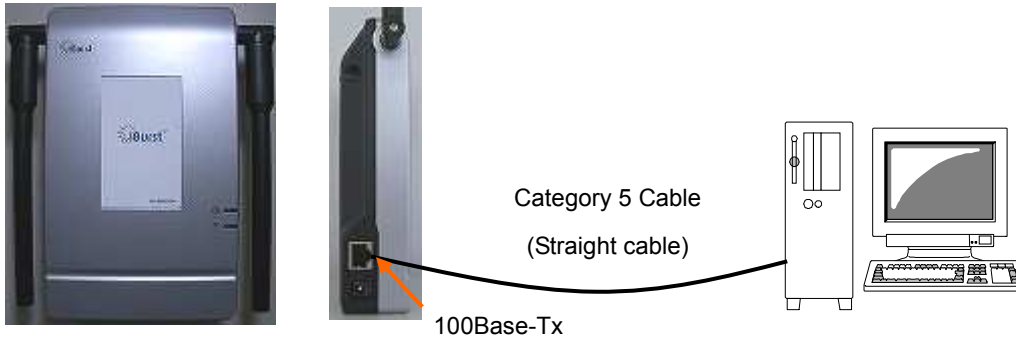
Indicators

The table below describes meaning of each indicator.

Indicator	State	Meaning
Power Indicator	OFF	Turned OFF
	Purple	During Boot
	Blue	After Boot Blinking when ethernet link down
Link/Communication Indicator	OFF	Turned OFF
	Yellow	During Boot
	Amber	No signal receiving
	Yellow	Weak signal receiving Blinking when communicating.
	Green	Strong signal receiving Blinking when communicating.

Outlook to use the iBurst Terminal

The UTW has one Ethernet port. The Ethernet port shall be connected with your PC. You don't have to install the software in case Mac OS X.



Chapter 2

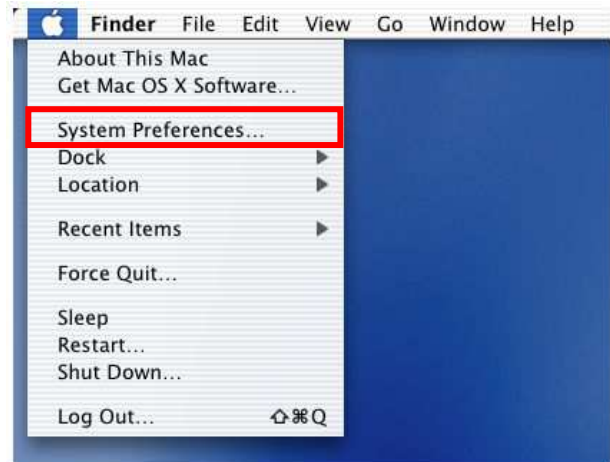
Setup Procedure

**This chapter describes how to make a network connection
so as to use data communication service.**

Connection Settings for Mac OS X 10.1.5-10.4

NOTE: All screen copies in this section are captured on Mac OS X 10.4 if not mentioned.

1. Make sure to connect the iBurst Terminal with your PC via Ethernet cable.
2. Select [System Preferences...] on the Apple menu.



3. Click [Network] in the [System Preferences] window.



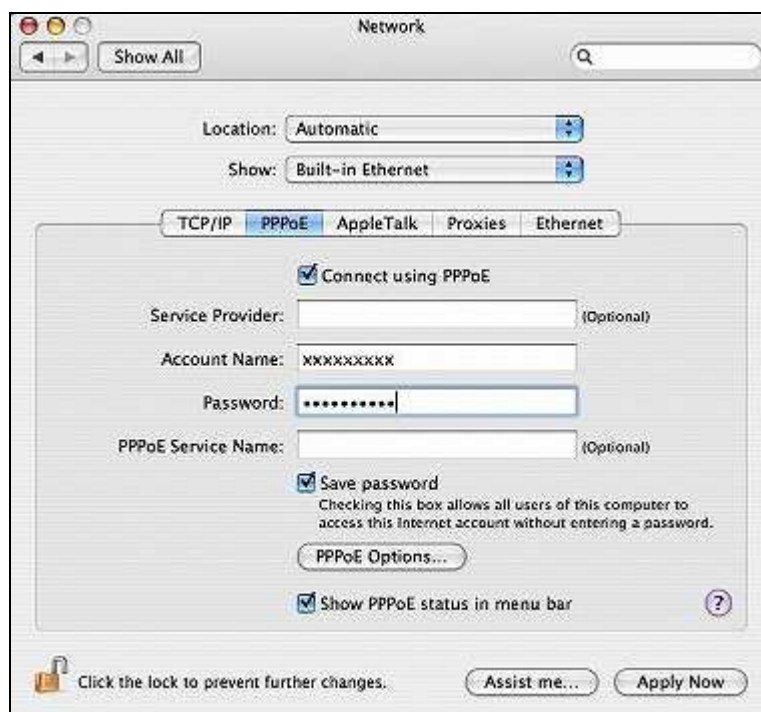
4. Click on the drop down menu of the [Show]; and
Select appropriate “Ethernet” interface, “Built-in Ethernet” for example.

Additionally, set as follows.

- Select the [PPPoE] tab.
- Check [Connect using PPPoE].
- Enter [Account Name] provided by the network operator.
- Enter [Password] provided by the network operator.
- Check [Save password] If you require the computer to remember your password.
- Check [Show PPPoE status in menu bar].

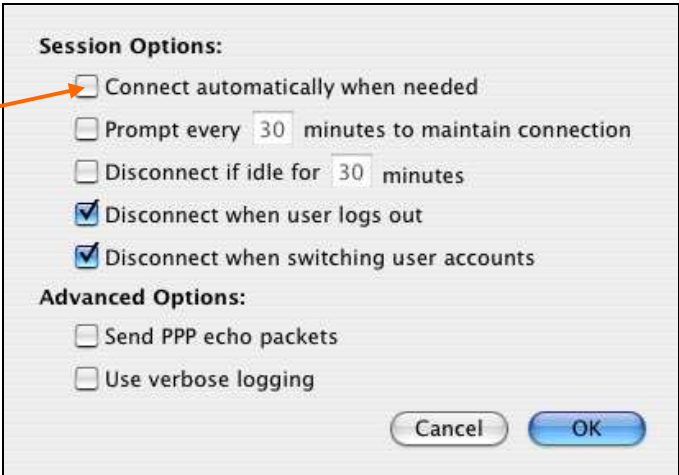
NOTE: If uncheck this option, you cannot see the icon described in the step 8 and 9.

- And then, click [PPPoE Options...]

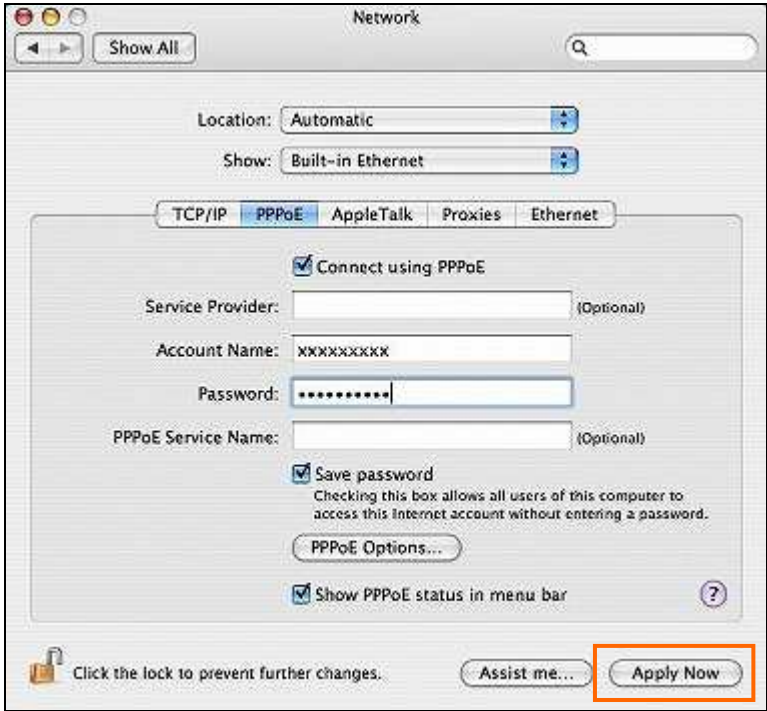


- On the PPPoE Options dialog, set any if required and click [OK].

NOTE:
 If you don't enable "Connect automatically when needed", you have to make a PPPoE connection following the procedure described in the next page every when you want to connect to the Internet.



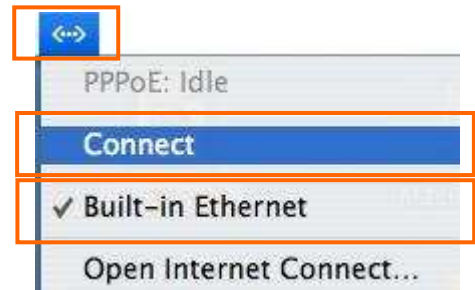
- Click the [Apply Now] button.



- At this point, the connection configuration is completed. When you open any internet application software, e.g. a web browser, the internet connectivity will be activated automatically.

NOTE: The step below is for easy connection/disconnection of PPPoE session manually.

- Click the <---> icon at the top right of screen, and select the Built-in Ethernet you chose in step 4 as the default network adaptor. And then, click <---> again and click [Connect] to start connecting or click [Disconnect] to clear connection.

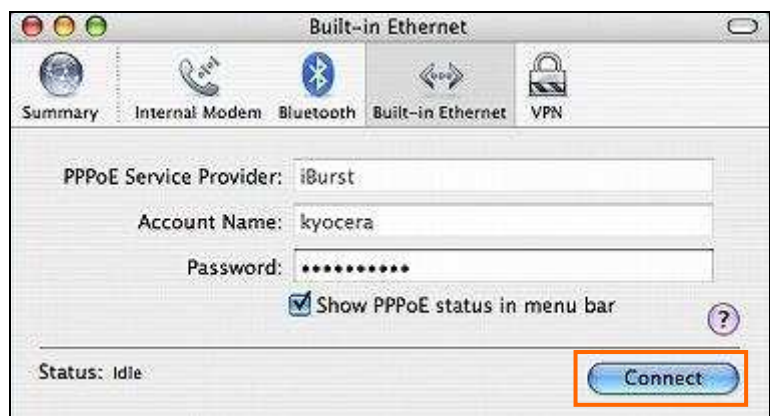


NOTE: The steps below is to connect/disconnect PPPoE session manually on “Internet Connect” dialog.

- Click the <---> icon at the top right of screen, and choose [Open Internet Connect]



- Select [Built-in Ethernet] you chose in step 4 and click the [Connect] or [Disconnect].



NOTE: In case that there are many network adaptors on version 10.4, you can find the adapter by expanding icon array, by clicking “>>”, at the top of the dialog.

NOTE: In case of version 10.3 or older, choose the network adaptor on the drop down menu “Configuration”.

Connection Settings for Mac OS X 10.5

1. Make sure to connect the iBurst Terminal with your PC via Ethernet cable.
2. Select [System Preferences...] on the Apple menu.



3. Click [Network] in the [System Preferences] window.



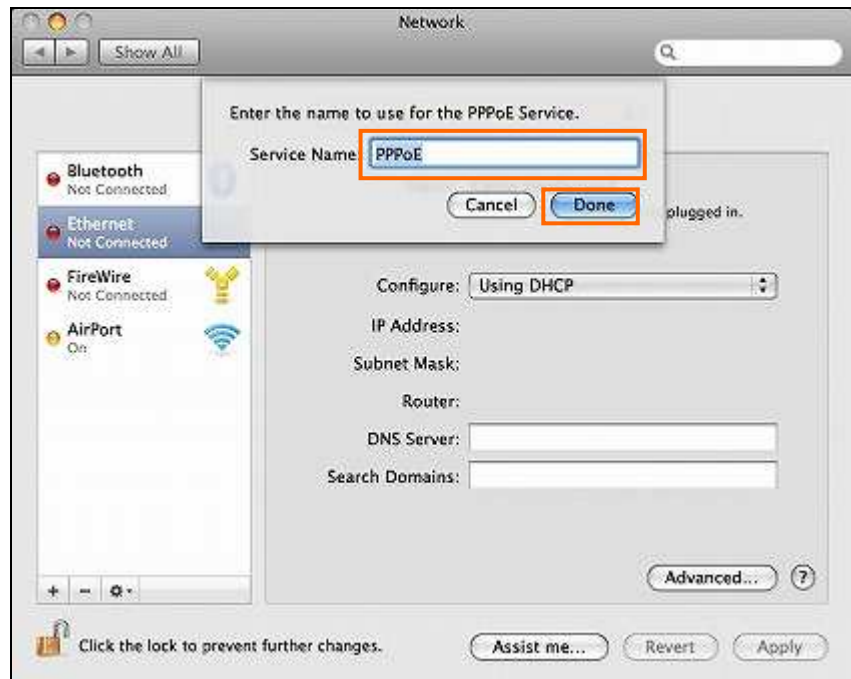
4. Select "Ethernet" in the left side of the window.



5. Click on the drop down menu of the [Configure], and select [Create PPPoE Service...].



6. Specify a [Service Name]. “PPPoE” is the default name but you can change it. And then, click [Done].



7. The service name specified above will be listed in the left side of the window. Select it and configure parameters as follows.



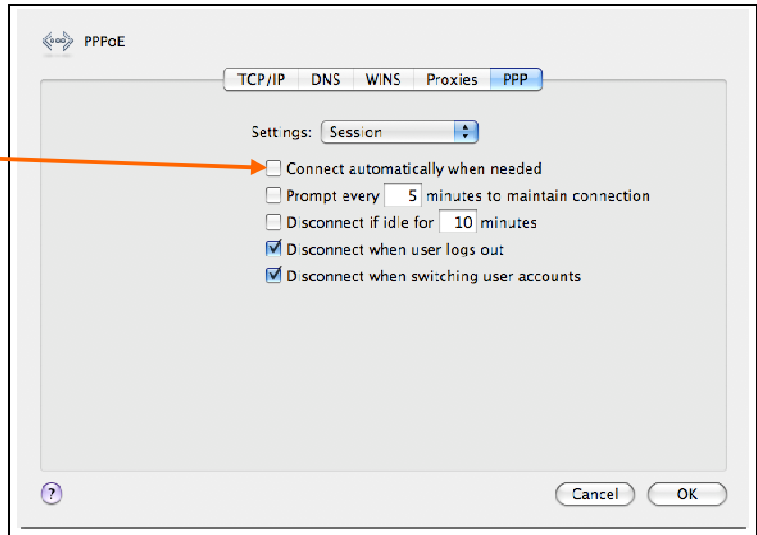
- Enter [Account Name] provided by the network operator.
- Enter [Password] provided by the network operator.
- Check [Remember this password] if you require the computer to remember your password.
- Check [Show PPPoE status in menu bar].

NOTE: If uncheck this option, you cannot see the icon described in the step 11 and 12.

- And then, click [Advanced...]

8. Click [PPP] tab. Set any if required and click [OK].

NOTE:
If you don't enable "Connect automatically when needed", you have to make a PPPoE connection following the procedure described in the next page every when you want to connect to the Internet.



9. Click the [Apply] button.



10. At this point, the connection configuration is completed. When you open any internet application software, e.g. a web browser, the internet connectivity will be activated automatically.

NOTE: The step below is for easy connection/disconnection of PPPoE session manually.

11. Click the <---> icon at the top right of screen, and select [Connect “PPPoE”] to start connecting or click [Disconnect “PPPoE”] to clear connection. Above-mentioned “PPPoE” must be the name specified in step 6.



NOTE: The steps below is to connect/disconnect PPPoE session manually on “Network” dialog.

12. Click the <---> icon at the top right of screen, and choose [Open Network Preferences]



13. Select “PPPoE”, which must be the name specified in step 6, in the left side of the window and click the [Connect] or [Disconnect].



Chapter 3

Utility Software

**This chapter describes the features and usage of the
Status Indication over Ethernet.**

Status Indication over Ethernet

Introduction

In case that you want to make an IP connectivity through Ethernet, you can see statuses of iBurst Terminal on a web browser instead of iBurst Utility software. In this case, you need to follow the steps described in this section.

Attention

Since the Ethernet port of an iBurst Terminal has a fixed IP address, 192.168.250.55 as default, it is strongly recommended to isolate both the iBurst Terminal and your PC from a live Ethernet network in order to avoid any network trouble.

Information

You can use a straight, not cross, cable to connect between the iBurst Terminal and your PC, it means that the Ethernet port of an iBurst Terminal has a interface like as a HUB.

Procedure

1. To enable communication with the iBurst Terminal, you have to change IP address of your PC.

<In case Mac OS X 10.1-10.4>

- 1) Click "System Preferences" on the dock or click the APPLE icon on the top menu and click "System Preferences..." to open that.
- 2) Click "Network" icon to open that.
- 3) At the pull-down menu of "Show:", select "Network Port Configurations" (in case 10.4 to 10.2) or "Active Network Ports" (in case 10.1).
- 4) Select "Built-in Ethernet" and click "Duplicate" button.
- 5) Specify a name and click "OK".
- 6) Click "Apply Now". **ATTENTION: This step is Very Important to avoid trouble.**
- 7) At the pull-down menu of "Show:", select the port duplicated.
- 8) Select "PPPoE" tab on the dialog and disable "Connect using PPPoE".
- 9) Click "Apply Now". **ATTENTION: This step is Very Important to avoid trouble.**
- 10) Select "TCP/IP" tab on the dialog.
- 11) At the pull-down menu of "Configure:", select "Manually".
- 12) Specify IP address and Subnet Mask according to your network plan. In case of connecting directly between the iBurst Terminal and your PC, the settings shown below are recommended as an example.

IP address:	192.168.250.1
Subnet mask:	255.255.255.0
Router:	(blank)

- 13) Click “Apply Now” button.
- 14) Close “Network” window.

<In case Mac OS X 10.5>

- 1) Click “System Preferences” on the dock or click the APPLE icon on the top menu and click “System Preferences...” to open that.
- 2) Click “Network” icon to open that.
- 3) Select “Ethernet” on the window of the left side.
- 4) At the pull-down menu of “Configure:”, select “Manually”.
- 5) Specify IP address and Subnet Mask according to your network plan. In case of connecting directly between the iBurst Terminal and your PC, the settings shown below are recommended as an example.

IP address: 192.168.250.1
Subnet mask: 255.255.255.0
Router: (blank)

- 6) Click “Apply” button.
- 7) Close “Network” window.

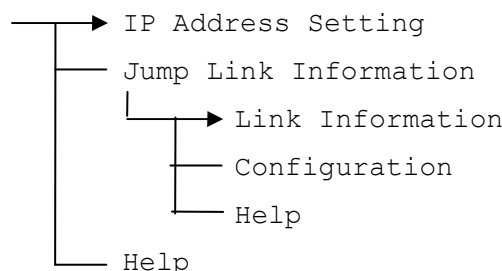
2. Open a web browser, e.g. Safari.

3. Specify a URL as follows.

`http://192.168.250.55/`

NOTE: Even though you change IP address of the iBurst Terminal, the iBurst Terminal hold the default IP address. So, the default IP address cannot be used for the other equipment in the network connected. The URL will jump automatically to the IP address you changed.

4. Now, you are seeing information in the iBurst Terminal. The structure of the information pages is as follows.



[IP Address Setting]

iBurst
iBurst Configuration Utility

Menu

- [IP Address Setting](#)
- [Jump Link Information](#)
- [Help](#)

IP Address Setting

Current IP Address is 192.168.250.60

Enter New IP Address (dotted decimal format):

This page shows current IP address of the iBurst Terminal. You can change the IP address on this page. To change it, type new IP address and click “Submit” button. The page shown below will be shown.



iBurst
iBurst Configuration Utility

Menu

- [IP Address Setting](#)
- [Jump Link Information](#)
- [Help](#)

IP Address Setting

New IP Address Set To: 192.168.250.61 -- COMPLETION

[Link Information]

The screenshot displays the iBurst Configuration Utility interface. On the left, there is a blue sidebar with the iBurst logo and the text 'iBurst Configuration Utility'. Below this is a 'Menu' section with three items: 'Link Information', 'Configuration', and 'Help'. The main area on the right is titled 'Link Information' and contains a table with the following data:

Aligned BSCC	8
Link Status	Connected (1)
Link Speed	40 / 2032 kbps
Frame Error	0.00 %
Signal Strength	100 %
Total Byte Received	5207 KByte
Total Byte Sent	118 KByte

Below the table, the text 'Copyright Kyocera Corporation. All rights reserved.' is visible.

Aligned BSCC

This indicates current aligned Base Station Color Code.

Link Status

This indicates current link status between the iBurst Terminal and the access point.

Connect (number of sessions) : The link is connected.

No Connect : The iBurst Terminal is connected with your PC but the link is not connected.

Link Speed

This indicates current bandwidth allocated automatically between the iBurst Terminal and a radio base station.

Frame Error Rate

This indicates current Frame Error Rate on the downlink air.

Signal Strength

This indicates current signal strength of the received radio signal. The signal bar indicates the level visually in percentage and the status words are categorized according to the percent level as follows.

No Signal : 0%

Poor : In the range of 1 to 24%

Fair : In the range of 25 to 49%

Good : In the range of 50 to 74%

Excellent : In the range of 75 to 100%


Total Byte Received

Total Byte Received indicates the total number of bytes received from the access point since the communication link is established.

Total Byte Sent

Total Byte Sent indicates the total number of bytes transmitted to the access point since the communication link is established.

** All information will be updated every 5 seconds.

[Configuration]


iBurst
iBurst Configuration Utility

Menu

- [Link Information](#)
- [Configuration](#)
- [Help](#)

Configuration

IP Address	192.168.250.68
Software Version	C103B0C9
Software Build Date	2008.02.05
Hardware Build Date	2007.12.03
UTID	001264404700978
MAC Address	00:C0:EE:CF:03:D2

Copyright Kyocera Corporation. All rights reserved.

IP Address

This shows the IP address of the iBurst Terminal.

Software version

This shows the firmware version.

Software build date

This shows the build date of the firmware.

Hardware build date

This shows the manufactured date of the iBurst Terminal.

UTID

UTID is an identifier assigned to the iBurst Terminal. This will be used for maintenance support.

Mac Address

This shows the Mac address of the iBurst Terminal.

[Help]

This navigates you to see the web pages.

Appendix

Maximum data rate on Mac

iBurst Terminal would not perform maximum data rate when it connects with Mac PC.

This is obviously caused by Mac OS.

And typical data rate connecting with Mac is 1.6Mbps at downlink and 480Kbps at uplink.

FCC Compliance Statement

FCC WARNING

Changes or modifications not expressly approved by the party responsible for compliance could void the user's authority to operate the equipment.

NOTICE

This equipment has been tested and found to comply with the limits for a Class B digital device, pursuant to part 15 of the FCC rules. These limits are designed to provide reasonable protection against harmful interference in a residential installation. This equipment generates, uses and can radiate radio frequency energy and, if not installed and used in accordance with the instructions, may cause harmful interference to radio communications. However, there is no guarantee that interference will not occur in a particular installation. If this equipment does cause harmful interference to radio or television reception, which can be determined by turning the equipment off and on, the user is encouraged to try to correct the interference by one or more of the following measures:

- Reorient or relocate the receiving antenna.
- Increase the separation between the equipment and receiver.
- Connect the equipment into an outlet on a circuit different from that to which the receiver is connected.
- Consult the dealer or an experienced radio/TV technician for help.

FCC RF Radiation Exposure Statement

This transmitter must not be co-located or operated in conjunction with any other antenna or transmitter.

This equipment complies with FCC radiation exposure limits set forth for uncontrolled equipment and meets the FCC radio frequency (RF) Exposure Guidelines in Supplement C to OET65. This equipment should be installed and operated with at least 20cm and more between the radiator and person's body (excluding extremities: hands, wrists, feet and ankles).

[The end of this manual]