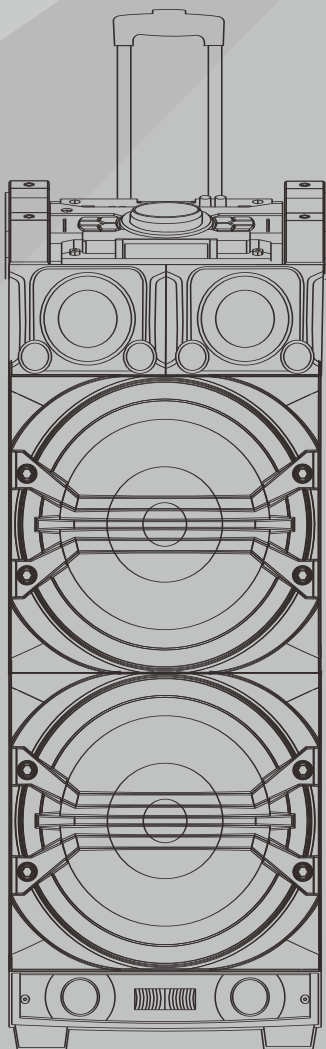


LAX-MAX[®]
NEW GENERATION

LI-S255 (ABC)

PORTABLE SPEAKER

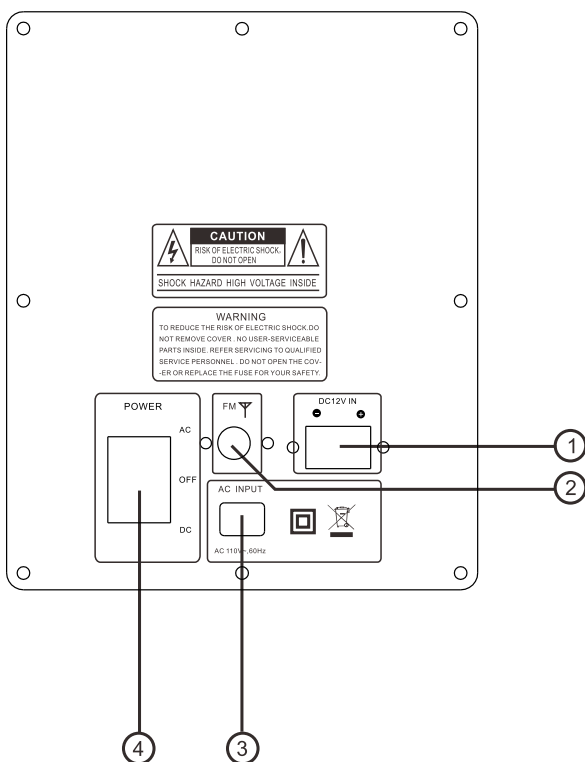


Instruction Manual

Caution: Read this before operating your unit.

- 1 To assure the finest performance, please read this manual carefully. Keep it in a safe place for future reference.
- 2 Install this sound system in a well ventilated, cool, dry, clean place - away from direct sunlight, heat sources, vibration, dust, moisture, and/or cold. For proper ventilation, allow the following minimum clearances around this unit.
Top: 10 cm (4 in)
Rear: 10 cm (4 in)
Sides: 10 cm (4 in)
- 3 Locate this unit away from other electrical appliances, motors, or transformers to avoid humming sounds.
- 4 Do not expose this unit to sudden temperature changes from cold to hot, and do not locate this unit in an environment with high humidity (i.e. a room with a humidifier) to prevent condensation inside this unit, which may cause an electrical shock, fire, damage to this unit, and/or personal injury.
- 5 Avoid installing this unit where foreign object may fall onto this unit and/or this unit may be exposed to liquid dripping or splashing. On the top of this unit, do not place:
 - Other components, as they may cause damage and/or discoloration on the surface of this unit.
 - Burning objects (i.e. candles), as they may cause fire, damage to this unit, and/or personal injury.
 - Containers with liquid in them, as they may fall and liquid may cause electrical shock to the user and/or damage to this unit.
- 6 Do not cover this unit with a newspaper, tablecloth, curtain, etc. in order not to obstruct heat radiation. If the temperature inside this unit rises, it may cause fire, damage to this unit, and/or personal injury.
- 7 Do not plug in this unit to a wall outlet until all connections are complete.
- 8 Do not operate this unit upside-down. It may overheat, possibly causing damage.
- 9 Do not use force on switches, knobs and/or cords.
- 10 When disconnecting the power cable from the wall outlet, grasp the plug; do not pull the cable.
- 11 Do not clean this unit with chemical solvents; this might damage the finish. Use a clean, dry cloth.
- 12 Only voltage specified on this unit must be used. Using this unit with a higher voltage than specified is dangerous and may cause fire, damage to this unit, and/or personal injury. We will not be held responsible for any damage resulting from use of this unit with a voltage other than specified.
- 13 To prevent damage by lightning, keep the power cable and outdoor antennas disconnected from a wall outlet or this unit during a lightning storm.
- 14 Do not attempt to modify or fix this unit. Contact Qualified service personnel when any service is needed. The cabinet should never be opened for any reasons.
- 15 When not planning to use this unit for long periods of time (i.e. vacation), disconnect the AC power plug from the wall outlet.
- 16 Be sure to read the TROUBLESHOOTING section on common operating errors before concluding that this unit is faulty.
- 17 Before moving this unit, disconnect the AC power plug from the wall outlet.
- 18 Condensation will form when the surrounding temperature changes suddenly. Disconnect the power cable from the outlet, then leave this unit alone.
- 19 When using this unit for a long time, this unit may become warm. Turn the power off, then leave this unit alone for cooling.
- 20 Install this unit near the AC outlet and where the AC power plug can be reached easily.
- 21 The batteries shall not be exposed to excessive heat such as sunshine, fire or the like. When you dispose of batteries, follow your regional regulations.
- 22 Excessive sound pressure from earphones and headphones can cause hearing loss.

REAR PANEL



1.DC 12V INPUT

To connect to external power DC 12V

2.FM ANTENNA

FM antenna input jacks.

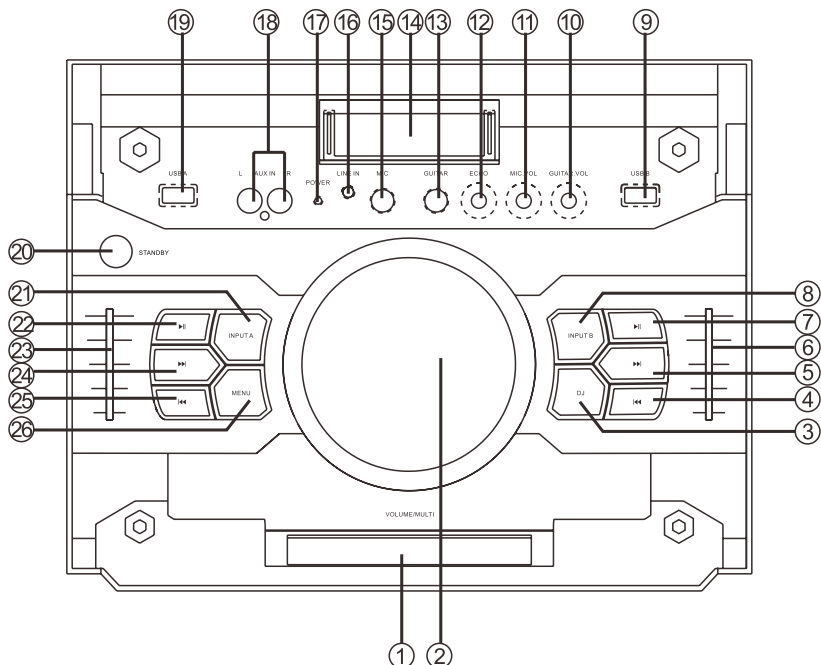
3.AC INPUT

AC 110V~, 60Hz

4.POWER

Switch power DC INPUT, AC INPUT, AC or DC off.

FRONT PANEL



1.LED DISPLAY

2.VOLUME/MULTI

Rotate the knob to adjust the volume and Press this key to choose different music effect.

3.DJ MODE

Press this key to choose different dj mode.

4.USB B NEXT ►►

Press this key to choose next music with USB B

5.USB B PREV ◄◄

Press this key to choose previous music with USB B

6.USB B VOLUME

This is used to adjust the volume with USB B

7.USB B PAUSE ►||

Press this key to choose play/pause music with USB B

8.INPUT USB B

Press this key to choose USB B input mode.

9.USB B input jack

10.GUITAR VOLUME

11.MIC VOLUME

12.ECHO

13.GUITAR jack

14.Wall spotlight

15.MIC jack

16.LINE IN AUDIO INPUT JACK

Connect to LINE IN signal output jack.

17.DC POWER light

18.AUX AUDIO INPUT JACK

Connect to AUX signal output jack.

19.USB A input jack

20.STANDBY

21.INPUT USB A

Press this key to choose USB A input mode.

22.USB A PAUSE ►||

Press this key to choose play/pause music with USB A

23.USB A VOLUME

This is used to adjust the volume with USB A

24.USB A PREV ◄◄

Press this key to choose previous music with USB A

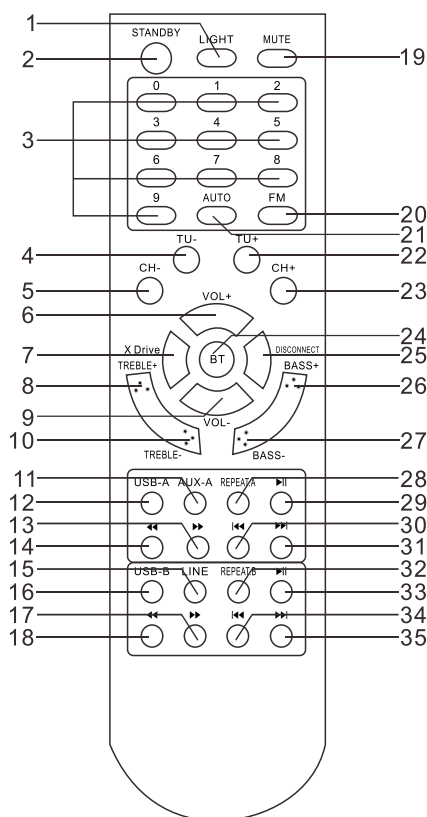
25.USB A NEXT ►►

Press this key to choose next music with USB A

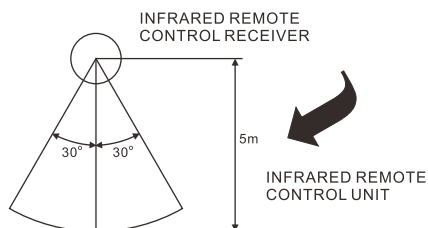
26.MENU

This switch selects the menu.

REMOTE CONTROL



1. LIGHT
2. STANDBY
3. NUMBER BUTTON
4. TUNING-
5. CHANNEL-
6. VOLUME+
7. X DRIVE
8. TREBLE+
9. VOLUME-
10. TREBLE-
11. AUX-A
12. USB-A
13. USB-A F.WARD ►►
14. USB-A B.WARD ◄◄
15. LINE
16. USB-B
17. USB-B F.WARD ►►
18. USB-B B.WARD ◄◄
19. MUTE
20. FM
21. AUTO
22. TUNING+
23. CHANNEL+
24. BT
25. DISCONNECT
26. BASS+
27. BASS-
28. USB-A REPEAT
29. USB-A PAUSE ►►
30. USB-A PREVIOUS ◄◄
31. USB-A NEXT ►►
32. USB-B REPEAT
33. USB-B PAUSE ►►
34. USB-B PREVIOUS ◄◄
35. USB-B NEXT ►►



REMOTE CONTROL OPERATION:

- ☐ If the remote control conflicts with other devices, the operation will be affected.
- ☐ Do not simultaneously press buttons on the unit and the remote control.
- ☐ Avoid using two remote controls at the same time as this will cause a malfunction.
- ☐ Use only UM-4 ``AAA`` size batteries. Do not mix old batteries with new ones.
- ☐ If the batteries leak, clean thoroughly before replacing with new ones.
- ☐ Do not short two terminals of the batteries. Dispose of old batteries in a suitable place.

Normal function

1. Be sure to switch off the power and to connect to corresponding input jacks.
2. Turn on the power and wait 3-4 seconds until the speaker functions are connected.
3. Select an audio source by pressing the INPUT A key on the front panel to display AUX A, BT-A, FM, USB A. Press the INPUT B key on the front panel to display LINE, USB B.
4. Adjust the VOLUME/MULTI knob on the front panel or the VOL +/- key on the remote control to adjust the setting of the main volume. Then turn the left push shot to adjust the volume of USB A, turn the right push shot to change the volume of the USB B.
5. Press the MENU key on the front panel to display BASS, TREBLE, XDRIVE, AUTO, MAIN then adjust the VOLUME knob to change music treble, bass, light mode and sound effect.
6. Press the DJ button on the front panel to display SCRATCH, REVERB, BEAT BOX, YEAH, DJ OFF mode, then adjust the DJ knob to design and change the music effect as you like.
7. Press the LIGHT button on the remote control or press the MENU button on the front panel to display light mode, then press the VOLUME/MULTI knob to change the OFF, R, G, B, RG, RB, GB, RGB, AUTO, DEMO light mode.
8. Press the MUTE key to mute, press it again to reset.
Press X DRIVE on the remote to turn on/off X-Bass effect.

Light color control function

To control the light modes coming from the speaker panels by "Speaker" menu or "light model" button on remote control

- R = red lights flash
- G = green lights flash
- B = blue lights flash
- RG = red and green lights flash
- RB = red and blue lights flash
- GB = green and blue lights flash
- RGB = red, green, and blue lights flash
- Auto = the various color combinations cycle through and flash.
- Demo = lights flash and change color as if they were responding to the beat of the music.

Tuner applications

1. Before using the radio functions, you must attach the supplied antenna. Adjust the antenna to obtain optimum reception.
Press the INPUT A key on the front panel (amplifier) or the FM key on the remote control, to select "FM" function.
2. Press the CH+/CH- key on the remote control to find radio bands that you have previously saved.
3. Press or hold the TU+/TU- key on the remote control to adjust the radio frequency manually.
4. Press the AUTO key on the remote control, the machine will scan radio channels from low-frequency to high-frequency by itself and memorize the channels one by one.

KARAOKE & GUITAR function

1. The machine can auto detect whether MIC 1, MIC2 or GUITAR is inserted.
Please turn off the microphone volume and adjust the volume gradually after inserting the microphone.
 2. Press VOL+/- on the remote or adjust the MIC.VOL knob on the front panel to change the microphone VOLUME.
 3. Adjust the ECHO knob on the front panel to change the microphone ECHO.
 4. Adjust the GUITAR.VOL knob on the front panel to change the guitar VOLUME.
- Note: Do not touch the top of the microphone when singing in order to avoid howling effect.
Adjust the microphone volume gradually to avoid howling effect.

Bluetooth pair and connect

- Turn off any Bluetooth devices previously paired (linked) with this unit.
- Turn on the Bluetooth features on your phone or music player.
- Turn on and set this unit to Bluetooth mode. The flashing blue light BT on LED display indicates it is in pairing mode.
- Set your phone or music player to search for Bluetooth devices.
- Select *LAXMAX100* from search results on your phone or music player.
- Select OK or YES to pair this unit with your phone or music player.
- If protected, enter 0000 for passkey steady blue light indicates successful connection.
- Press the DISCONNECT key on the remote to disconnect the bluetooth.

Function of NFC

For the smartphone with NFC (Near Field Communication) function, you can easily perform the pairing operation just by touching the NFC mark on this unit with your smartphone (you need to turn on the power of this unit and turn on the NFC function of the connecting device beforehand).

1. Press the (power) button to turn on the power of this unit.
 2. Perform the pairing operation on the connecting device (for details, refer to the owner's manual of the connecting device).
- If the connection fails, move the smartphone slowly on the NFC mark. If the smartphone is equipped with a case, remove the case.

What is NFC?

Near Field Communication (NFC) is a standards-based connectivity technology that makes it more convenient to make transactions, exchange digital content and connect devices.

Using NFC you can transfer information between your phone and other NFC devices, such as phones and other mobile devices, payment devices and home audio and video devices. For example, you can share web addresses, contacts, phone numbers, music tracks, videos or photos.

NFC is activated by bringing two NFC devices together. The maximum reading distance is about one centimeter, which helps prevent unauthorized communications.

Function of USB reader

USB A interface

This unit has two USB jacks. Press the INPUT A key to select USB A, then you can insert a USB to play music. Press the INPUT B key to select USB B, then you can insert the another USB to play music.

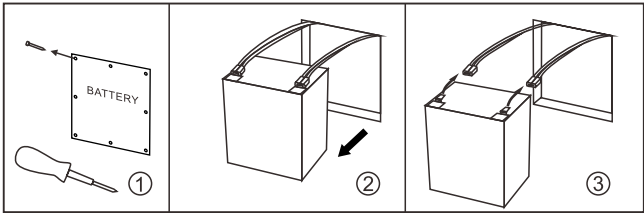
Important: The USB port is intended only for data transfer only, other devices cannot be used with this USB connection. The use of USB extension cords is not recommended.

In order to protect the battery

- 1. When the battery is powered mode, standby operation is invalid.
- 2. When the battery is low, the system prompts "LOW POWER", POWER lamp blinks.
- 3. When the battery is serious shortage, the system prompts "" NO POWER ", POWER lamp blinks. The system to stop

Battery Disassembly

- 1. Remove the screws on the rear panel.
- 2. Take out the battery.
- 3. Disconnect



Accessories

Remote control	-----1 pc
Fm antenna	-----1 set
Instruction Manual	-----1 pc
Wireless microphones	-----1 set

Specification

Frequency Response	-----20Hz-20KHz
Power Source	-----110V~,60Hz
Power Consumption	-----80W

■ The specification presents only as a reference. The value of weight and size are approximation.

■ Our product is improved ceaselessly and the specification and function may be changed without prior notice.

FCC Statement

This equipment has been tested and found to comply with the limits for a Class B digital device, pursuant to Part 15 of the FCC Rules. These limits are designed to provide reasonable protection against harmful interference in a residential installation. This equipment generates uses and can radiate radio frequency energy and, if not installed and used in accordance with the instructions, may cause harmful interference to radio communications. However, there is no guarantee that interference will not occur in a particular installation. If this equipment does cause harmful interference to radio or television reception, which can be determined by turning the equipment off and on, the user is encouraged to try to correct the interference by one or more of the following measures:

- Reorient or relocate the receiving antenna.
- Increase the separation between the equipment and receiver.
- Connect the equipment into an outlet on a circuit different from that to which the receiver is connected.
- Consult the dealer or an experienced radio/TV technician for help.

This device complies with part 15 of the FCC Rules. Operation is subject to the following two conditions: (1) This device may not cause harmful interference, and (2) this device must accept any interference received, including interference that may cause undesired operation.

Changes or modifications not expressly approved by the party responsible for compliance could void the user's authority to operate the equipment.