



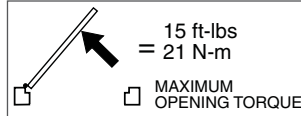
18758

2030 Series

LCN®

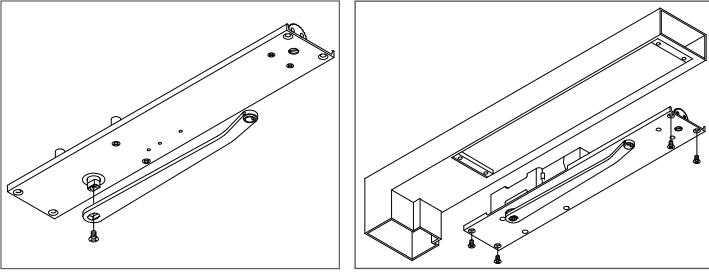
No maintenance required. 2035 EN 4

Installation Instructions



1 Installation

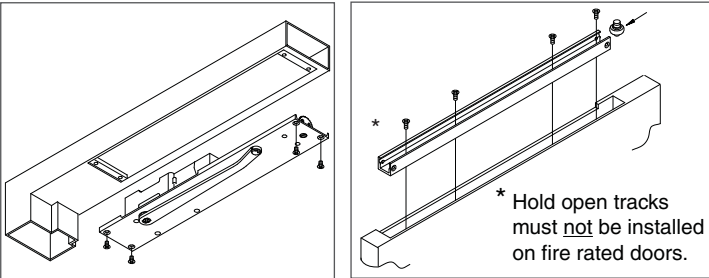
1a The hand of the door and the closer must be the same. RH or LH will be stamped on the mounting plate. See the proper template for your application.



1b Attach the arm to the closer. The bend in the arm will always point towards the door.

1c Install the closer including the arm in the prepped frame with mounting screws provided. Be sure the mounting plate is flush with the soffit.

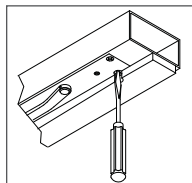
1d After the closer is mounted in the door jamb, attach the applied stop to the head frame, as shown below. The stop section must have an access hole to allow for door closer adjustment.



1e The track mortise in the top of the door must match the proper template. Place the roller in the track. Mount the track in the door with holes for the hold open clip toward the hinge edge. Fasten with the provided screws.

1f Open the door approximately 45°. Pull the arm over the top of the door. Align the hole in the end of the arm with the roller stud. Fit the closer arm completely onto the roller stud and tighten the arm set screw securely.

1g Adjust the closing power only if more power is needed. The closer is shipped with minimum closing power preset. To increase the closing power turn the spring adjusting screw clockwise. Maximum adjustment is 36 turns.



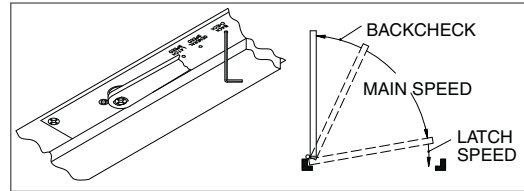
2 Adjustment

The 2030 Series closer has been regulated prior to shipment. If adjustments are necessary, carefully follow instructions **DO NOT REMOVE THE COVER PLATE TO MAKE ADJUSTMENTS.**

2a **Closing Speed:** See Closer Control Diagram below. Regulating screw locations are shown in illustration at left and also on door closer label. To adjust Main Speed, turn regulating screw clockwise to decrease or counter-clockwise to increase. To adjust Latch Speed, turn regulating screw clockwise to decrease or counter-clockwise to increase.

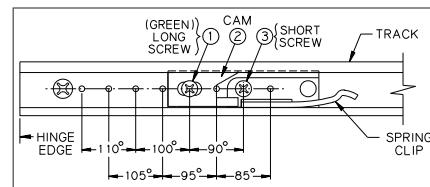
2b **Backcheck:** This control hydraulically dampens the opening speed of doors. Use enough backcheck to sufficiently slow the doors opening speed. To increase resistance, turn regulating screw clockwise.

① **NOTE: DO NOT USE AN ABRUPT BACKCHECK OR EXPECT THE DOOR CLOSER TO ACT AS A DOOR STOP!**



3 Hold Open Information

To install and adjust hold open option, see Fig. 1 and follow these directions: Tip hold open clip into track. Locate desired hold open position and fasten with screw 3. Tip cam into track & locate as shown. Fasten with screw 1. Push door into hold open position and check for proper operation. To increase holding power, loosen screw and slide cam toward latch edge of door. To decrease holding power, slide cam toward hinge edge. Re-tighten screw 1.



Improper installation or regulation may result in personal injury or property damage. Follow all instructions carefully. For questions, call LCN at 877-671-7011.

Customer Service
1-877-671-7011 www.allegion.com

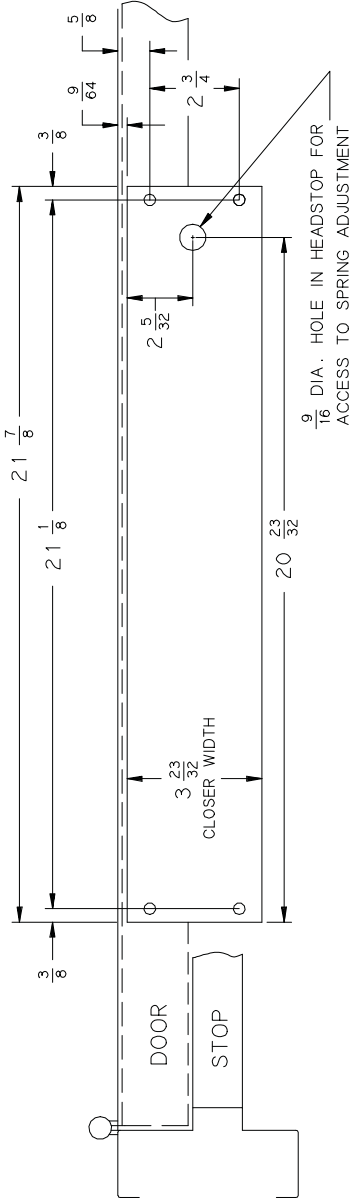


© Allegion 2014
Printed in U.S.A.
18758 Rev. 01/14-k

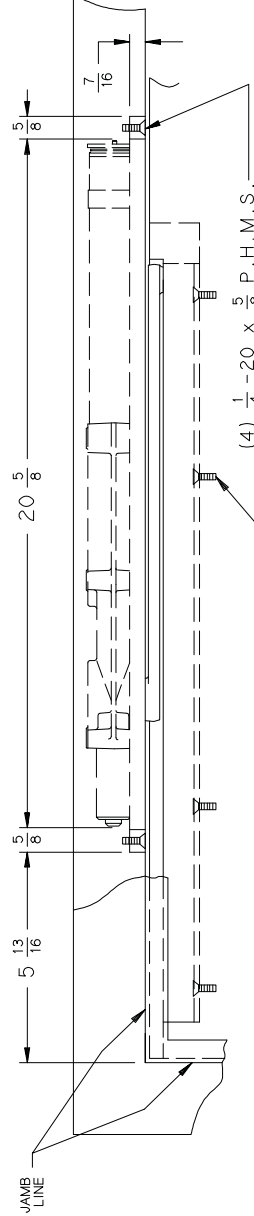
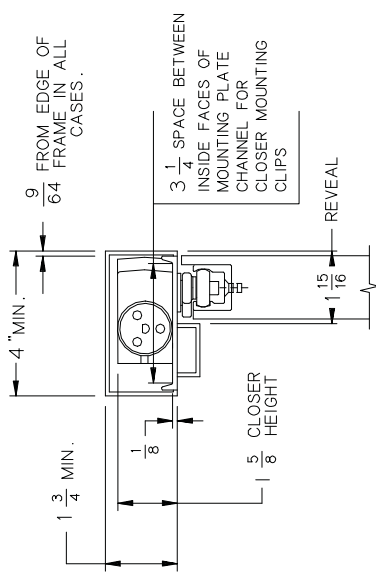
2031 } NON HOLD OPEN (90° - 180°)
 2033 } H 90 (85° - 110°)
 2034 }
 2035 } MAX. OPENING 180°

AUXILIARY STOP RECOMMENDED

AN ALUMINUM COMBINATION MOUNTING AND FINISH PLATE IS INCLUDED AS PART OF THE CLOSER. AN APPLIED REMOVABLE HEADSTOP MUST BE USED AND MOUNTED BETWEEN SIDE STOPS FOR REMOVABILITY. MOUNTING SCREW HOLES FOR REMOVABLE HEADSTOP MUST SPAN CLOSER MOUNTING/FINISH PLATE

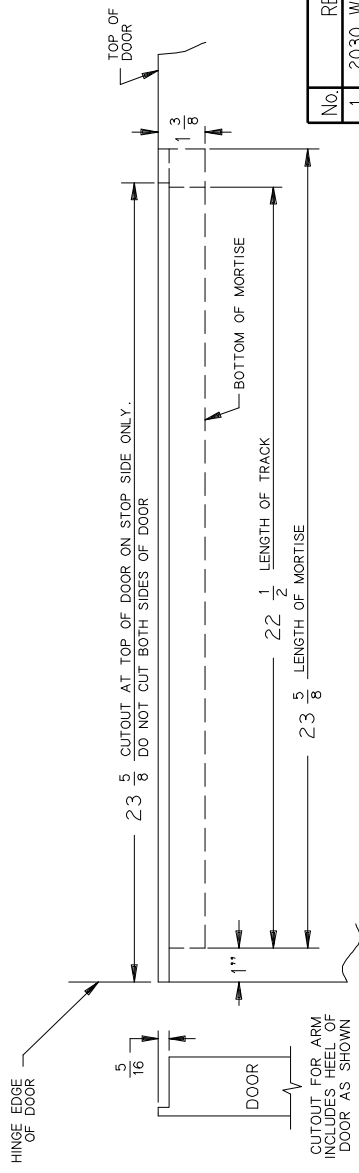


9/16 DIA. HOLE IN HEADSTOP FOR ACCESS TO SPRING ADJUSTMENT



(4) 1/4 - 20 x 5/8 P.H.M.S. OR (4) No. 14 x 1 1/4 P.H.W.S.

(4) 1/4 - 20 x 5/8 P.H.M.S.



inch	1/8	3/16	1/4	5/16	3/8	7/16	1/2	9/16	5/8	11/16	3/4	1	1 1/4	1 1/2	1 5/8	1 3/4
mm	3	4	6	8	10	11	13	14	16	22	25	32	35	41	44	44
inch	1 1/16	2 3/16	2 3/4	3 1/4	3 3/4	4	5 3/8	5 13/16	9 3/4	20 5/8	20 3/4	21 1/8	21 7/8	22 1/2	23 5/8	
mm	49	55	70	79	94	102	137	148	248	524	526	537	556	572	600	

CUTOUT FOR ARM INCLUDES HEEL OF DOOR AS SHOWN

NOTES-

1. FOR 180° OPENINGS. MAX. ALLOWABLE BUTT SIZE IS 5" x 5".
2. MINIMUM STOP THICKNESS 1/2".
3. 1/8" DOOR TO SOFFIT CLEARANCE REQUIRED.
4. REINFORCING PER ANSI/SDI-100 RECOMMENDED FOR HOLLOW METAL DOORS & FRAMES.

LEFT HAND DOOR AND CLOSER SHOWN, RIGHT HAND OPPOSITE

No.	REVISION	BY	DATE	DRW	CTB
1	2030 WAS 2030-101	RJS	3/78	1/94	
2	CHANGED LOGO	RJS	7/80		
3	CHANGE TO UNIV. TRACK	DRM	10/89		
4	TRACK HOLES RELOCATED	DRM	6/90		
5	CAD CONV./ADDED SIZE 1	CTB	1/94		

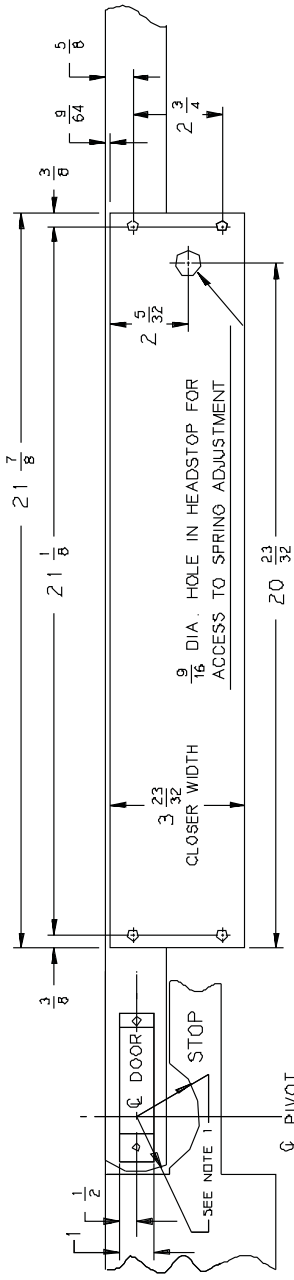
OVERHEAD CONCEALED CLOSER WITH CONCEALED ARM & TRACK

2030 INST.

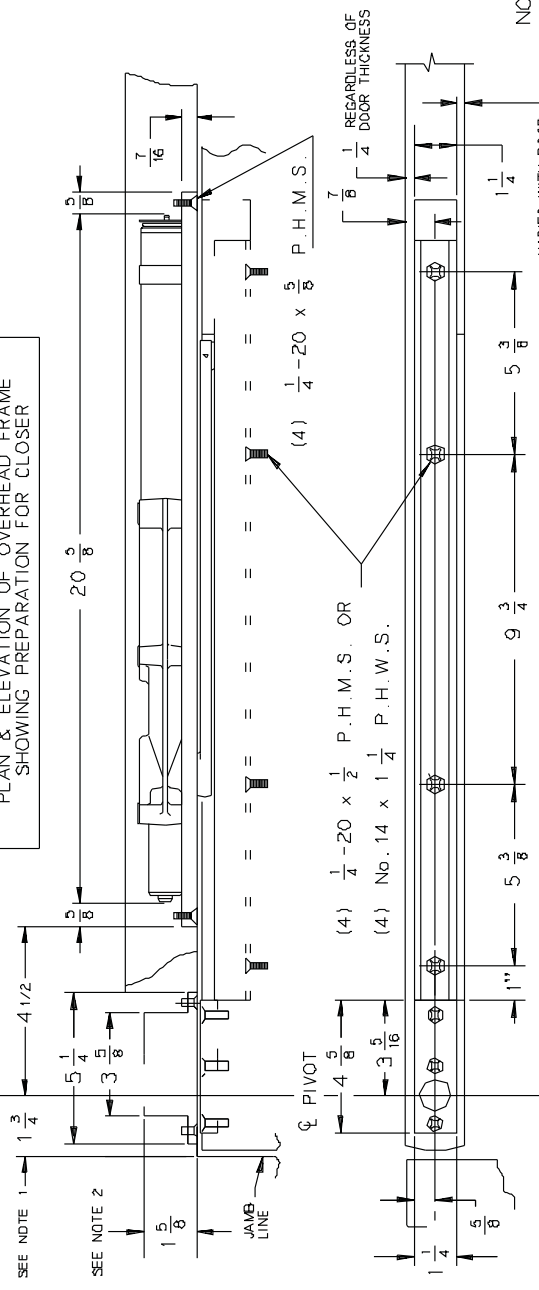
2031 CP) NON HOLD OPEN (UP TO 120°)
 2032 CP) H-90 (80° TO 100°)
 2033 CP) H-90 (80° TO 100°)
 2034 CP) MAX. OPENING 120°
 2035 CP)

AUXILIARY STOP RECOMMENDED
 LEFT HAND DOOR AND CLOSER SHOWN, RIGHT HAND OPPOSITE 6/96

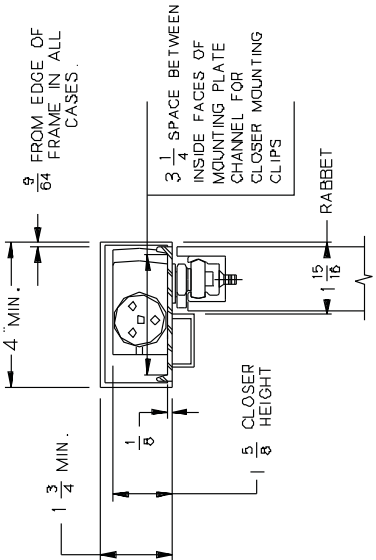
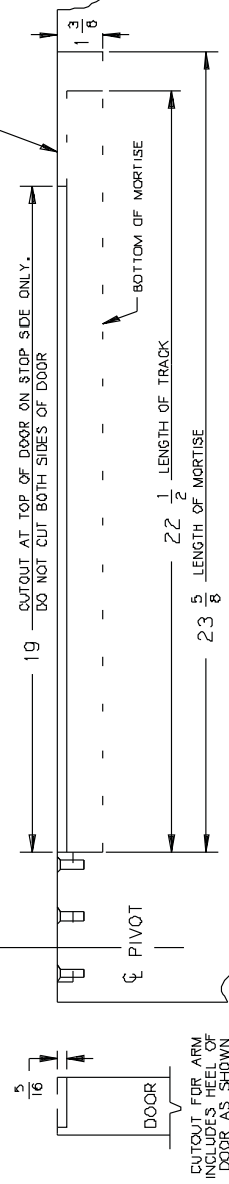
AN ALUMINUM COMBINATION MOUNTING AND FINISH PLATE IS INCLUDED AS PART OF THE CLOSER. AN APPLIED REMOVABLE HEADSTOP MUST BE USED AND MOUNTED BETWEEN SIDE STOPS FOR REMOVABILITY. MOUNTING SCREW HOLES FOR REMOVABLE HEADSTOP MUST SPAN CLOSER MOUNTING/FINISH PLATE



PLAN & ELEVATION OF OVERHEAD FRAME SHOWING PREPARATION FOR CLOSER

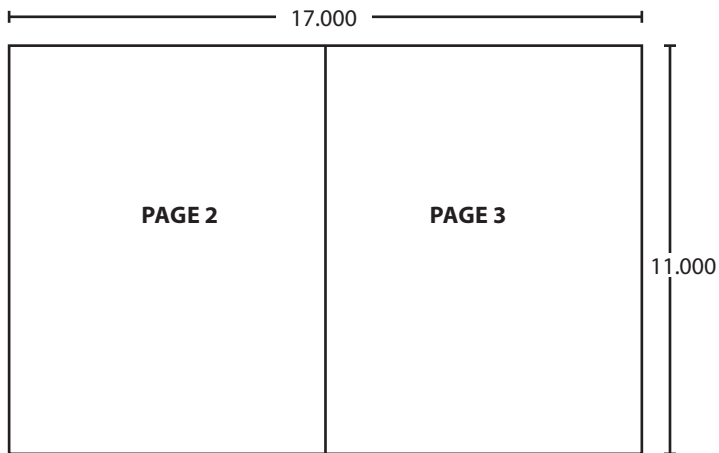
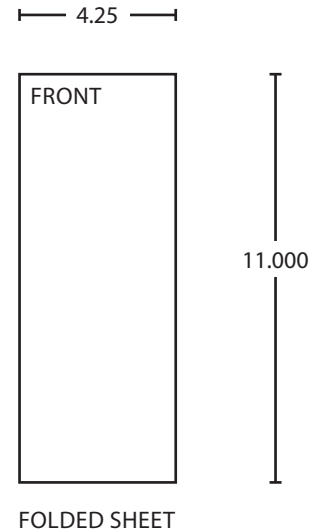
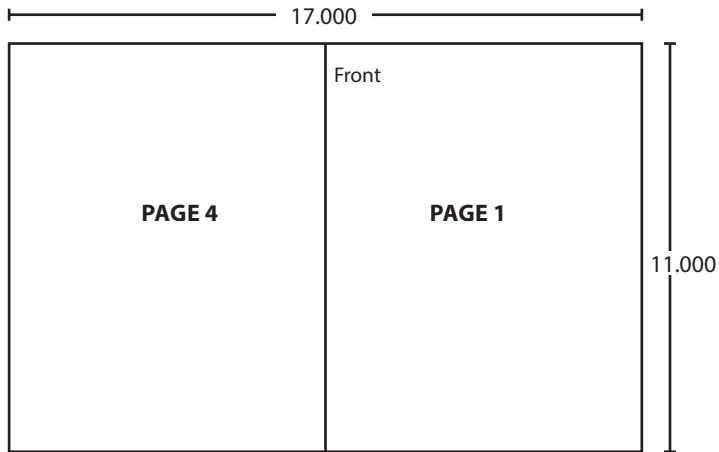


PLAN & ELEVATION OF TOP OF DOOR SHOWING PREPARATION FOR CLOSER TRACK



- NOTES :
- PIVOT CENTER MAY BE VARIED AS DESIRED. MINIMUM ALLOWABLE IS 1 3/4" AS SHOWN. CUTOUT IN HEADSTOP & VERTICAL JAMB TO CLEAR HEEL OF DOOR. HEEL OF DOOR RADIUS MUST NOT EXCEED $\frac{1}{2}$ " OF PIVOT TO JAMB DISTANCE
 - FOR PIVOT INSTALLATION DETAILS. SEE 7250 SERIES PIVOT TEMPLATE.
 - MINIMUM STOP THICKNESS 1/2"
 - 1" DOOR TO SOFFIT CLEARANCE REQUIRED.
 - REINFORCING PER ANSI/SDI-100 RECOMMENDED FOR HOLLOW METAL DOOR AND FRAMES.

inch	mm	inch	mm	inch	mm	inch	mm	inch	mm	inch	mm	inch	mm
1/8	3	1/4	6	3/8	10	1/2	13	5/8	16	3/4	19	7/8	22
3/16	5	1/2	13	5/8	16	3/4	19	7/8	22	1	25	1 1/8	28
1/2	13	5/8	16	3/4	19	7/8	22	1	25	1 1/8	28	1 1/4	32
3/4	19	7/8	22	1	25	1 1/8	28	1 1/4	32	1 3/8	35	1 1/2	38
1	25	1 1/8	28	1 1/4	32	1 3/8	35	1 1/2	38	1 5/8	41	1 3/4	41
1 1/8	28	1 3/8	35	1 1/2	38	1 5/8	41	1 3/4	41	1 7/8	44	1 7/8	49
1 3/8	35	1 7/8	44	1 7/8	44	2	51	2 1/8	53	2 1/4	57	2 1/4	61
1 7/8	44	2	51	2 1/8	53	2 1/4	57	2 1/4	61	2 3/8	60	2 3/8	64
2	51	2 1/8	53	2 1/4	57	2 1/4	61	2 3/8	60	2 3/4	67	2 3/4	71
2 1/8	53	2 3/8	60	2 3/4	67	2 3/4	71	2 7/8	73	2 7/8	73	2 7/8	76
2 3/8	60	2 7/8	73	2 7/8	73	3	76	3 1/8	77	3 1/4	81	3 1/4	86
2 7/8	73	3	76	3 1/8	77	3 1/4	81	3 1/4	86	3 3/8	89	3 3/8	93
3	76	3 1/8	77	3 1/4	81	3 1/4	86	3 3/8	89	3 3/4	91	3 3/4	95
3 1/8	77	3 1/4	81	3 3/8	89	3 3/4	91	3 3/4	95	3 7/8	99	3 7/8	101
3 3/8	89	3 3/4	91	3 7/8	99	3 7/8	101	4	102	4 1/8	104	4 1/8	107
3 7/8	99	3 7/8	101	4	102	4 1/8	104	4 1/8	107	4 3/8	111	4 3/8	113
4	102	4 1/8	104	4 1/8	107	4 3/8	111	4 3/8	113	4 7/8	124	4 7/8	125
4 1/8	104	4 3/8	111	4 3/8	113	4 7/8	124	4 7/8	125	5	127	5	127
4 3/8	111	4 7/8	124	4 7/8	125	5	127	5	127	5 1/8	130	5 1/8	137
4 7/8	124	5	127	5 1/8	130	5 1/8	137	5 1/8	137	5 3/8	140	5 3/8	143
5	127	5 1/8	130	5 1/8	137	5 1/8	137	5 3/8	140	5 3/8	143	5 3/8	148
5 1/8	130	5 3/8	140	5 3/8	143	5 7/8	146	5 7/8	149	6	152	6	152
5 3/8	140	5 7/8	149	5 7/8	149	6	152	6	152	6 1/8	155	6 1/8	159
5 7/8	149	6	152	6 1/8	155	6 1/8	159	6 1/8	161	6 3/8	164	6 3/8	167
6	152	6 1/8	155	6 1/8	161	6 1/8	164	6 3/8	167	6 3/8	170	6 3/8	173
6 1/8	155	6 3/8	164	6 3/8	167	6 3/8	170	6 7/8	175	6 7/8	178	6 7/8	181
6 3/8	164	6 7/8	175	6 7/8	178	7	180	7	183	7 1/8	185	7 1/8	188
6 7/8	175	7	180	7	183	7 1/8	185	7 1/8	188	7 3/8	191	7 3/8	194
7	180	7 1/8	185	7 1/8	188	7 3/8	191	7 3/8	194	7 5/8	197	7 5/8	200
7 1/8	185	7 3/8	194	7 3/8	197	7 5/8	200	7 5/8	203	7 7/8	206	7 7/8	210
7 3/8	191	7 5/8	200	7 5/8	203	7 7/8	206	7 7/8	210	8	203	8	203
7 5/8	197	7 7/8	206	7 7/8	210	8	203	8	203	8 1/8	207	8 1/8	211
7 7/8	200	8	203	8 1/8	207	8 1/8	211	8 1/8	215	8 3/8	219	8 3/8	223
8	203	8 1/8	207	8 1/8	211	8 1/8	215	8 1/8	219	8 3/8	223	8 3/8	227
8 1/8	207	8 3/8	211	8 3/8	215	8 3/8	219	8 3/8	223	8 5/8	227	8 5/8	231
8 3/8	211	8 5/8	223	8 5/8	227	8 5/8	231	8 5/8	235	8 7/8	239	8 7/8	243
8 5/8	223	8 7/8	231	8 7/8	235	9	229	9	233	9 1/8	237	9 1/8	241
8 7/8	231	9	233	9	237	9 1/8	241	9 1/8	245	9 3/8	249	9 3/8	253
9	233	9 1/8	241	9 1/8	245	9 1/8	249	9 1/8	253	9 3/8	257	9 3/8	261
9 1/8	241	9 3/8	253	9 3/8	257	9 3/8	261	9 3/8	265	9 5/8	269	9 5/8	273
9 3/8	253	9 5/8	265	9 5/8	269	9 5/8	273	9 5/8	277	9 7/8	281	9 7/8	285
9 5/8	265	9 7/8	277	9 7/8	281	9 7/8	285	9 7/8	289	10	293	10	297
9 7/8	277	10	293	10	297	10	301	10	305	10 1/8	309	10 1/8	313
10	293	10 1/8	309	10 1/8	313	10 1/8	317	10 1/8	321	10 3/8	325	10 3/8	329
10 1/8	309	10 3/8	325	10 3/8	329	10 3/8	333	10 3/8	337	10 5/8	341	10 5/8	345
10 3/8	325	10 5/8	341	10 5/8	345	10 5/8	349	10 5/8	353	10 7/8	357	10 7/8	361
10 5/8	341	10 7/8	357	10 7/8	361	10 7/8	365	10 7/8	369	11	373	11	377
10 7/8	357	11	377	11	381	11	385	11	389	11 1/8	393	11 1/8	397
11	377	11 1/8	393	11 1/8	397	11 1/8	401	11 1/8	405	11 3/8	409	11 3/8	413
11 1/8	393	11 3/8	409	11 3/8	413	11 3/8	417	11 3/8	421	11 5/8	425	11 5/8	429
11 3/8	409	11 5/8	425	11 5/8	429	11 5/8	433	11 5/8	437	11 7/8	441	11 7/8	445
11 5/8	425	11 7/8	441	11 7/8	445	11 7/8	449	11 7/8	453	12	457	12	461
11 7/8	441	12	461	12	465	12	469	12	473	12 1/8	477	12 1/8	481
12	461	12 1/8	477	12 1/8	481	12 1/8	485	12 1/8	489	12 3/8	493	12 3/8	497
12 1/8	477	12 3/8	493	12 3/8	497	12 3/8	501	12 3/8	505	12 5/8	509	12 5/8	513
12 3/8	493	12 5/8	509	12 5/8	513	12 5/8	517	12 5/8	521	12 7/8	525	12 7/8	529
12 5/8	509	12 7/8	525	12 7/8	529	12 7/8	533	12 7/8	537	13	541	13	545
12 7/8	525	13	545	13	549	13	553	13	557	13 1/8	561	13 1/8	565
13	545	13 1/8	561	13 1/8	565	13 1/8	569	13 1/8	573	13 3/8	577	13 3/8	581
13 1/8	561	13 3/8	577	13 3/8	581	13 3/8	585	13 3/8	589	13 5/8	593	13 5/8	597
13 3/8	577	13 5/8	593	13 5/8	597	13 5/8	601	13 5/8	605	13 7/8	609	13 7/8	613
13 5/8	593	13 7/8	609	13 7/8	613	13 7/8	617	13 7/8	621	14	625	14	629
13 7/8	609	14	629	14	633	14	637	14	641	14 1/8	645	14 1/8	649
14	629	14 1/8	645	14 1/8	649	14 1/8	653	14 1/8	657	14 3/8	661	14 3/8	665
14 1/8	645	14 3/8	661	14 3/8	665	14 3/8	669	14 3/8	673	14 5/8	677	14 5/8	681
14 3/8	661	14 5/8	677	14 5/8	681	14 5/8	685	14 5/8	689	14 7/8	693	14 7/8	697
14 5/8	677	14 7/8	693	14 7/8	697	14 7/8	701	14 7/8	705	15	709	15	713
14 7/8	693	15	713	15	717	15	721	15	725	15 1/8	729	15 1/8	733
15	713	15 1/8	729	15 1/8	733	15 1/8	737	15 1/8	741	15 3/8	745	15 3/8	749
15 1/8	729	15 3/8	745	15 3/8	749	15 3/8	753	15 3/8	757	15 5/8	761	15 5/8	765
15 3/8	745	15 5/8	761	15 5/8	765	15 5/8	769	15 5/8	773	15 7/8	777	15 7/8	781
15 5/8	761	15 7/8	777	15 7/8	781	15 7/8	785	15 7/8	789	16	793	16	797
15 7/8	777	16	797	16	801	16	805	16	809	16 1/8	813	16 1/8	817
16	797	16 1/8	813	16 1/8	817	16 1/8	821	16 1/8	825	16 3/8	829	16 3/8	833
16 1/8	813	16 3/8	829	16 3/8	833	16 3/8	837	16 3/8	841	16 5/8	845	16 5/8	849
16 3/8	829	16 5/8	845	16 5/8	849	16 5/8	853	16 5/8	857	16 7/8	861	16 7/8	865
16 5/8	845	16 7/8	861	16 7/8	865	16 7/8	869	16 7/8	873	17	877	17	881
16 7/8	861	17	881	17	885	17	889	17	893	17 1/8	897	17 1/8	901
17	881	17 1/8	897	17 1/8	901	17 1/8	905	17 1/8					



BEGINNING SHEET

Additional Notes:
1. None

Revision History						Revision Description:				
K	L	M	N	P	R	K > Revised Artwork				
042801										
Material						Edited By	Approved By	EC Number	Release Date	
White Paper						D. Myers	M. Sasso	042801	01-01-14	
Notes						Title				
1. printed two sides						2030 Series Installation Instructions				
2. printed black						Creation Date	Number		Revision	
3. tolerance ± .13						05-10-10	18758		K	
4. printed in country may vary						Created By	Activity			
5. drawings not to scale						N/A	3899 Hancock Expwy			
						Software: InDesign CS6	Security, CO 80911		© Allegion 2014	