

HOW TO USE LEXIN-B4FM

USER GUIDE



Motorcycle Bluetooth Intercom

LEXIN

V 3.0



Table of Contents

P01 [Download User Manual Online](#)

P02 [Watch Instruction Video Online](#)

P03 [Function Introduction](#)

P05 [Package Contents](#)

P06 [Installation Instructions](#)

P09 [General Operation Instructions](#)

P18 [Maintenance & Certification](#)



Download User Manual Online

English

★ - For Online User Manual in English, Spanish, German, Italian, French, Japanese... Visit **www.lexinmotorcycle.com**, Go to Support - User Manual, and select "B4FM".

Français

★ - Pour obtenir un mode d'emploi en Anglais, Espagnol, Allemand, Italien, Français Japonais en ligne... Accédez à **www.lexinmotorcycle.com** et trouvez-les sur Support - User Manual, puis sélectionnez "B4FM".

Italiano

★ - Per il Manuale Utente Online in Inglese, Spagnolo, Tedesco, Italiano, Francese Giapponese ... Visita **www.lexinmotorcycle.com**, vai su Support - User Manual, seleziona "B4FM".

Deutsch

★ - Online Bedienungsanweisung auf Englisch, Spanisch, Deutsch Italienisch Französisch, Japanisch usw., besuchen Sie **www.lexinmotorcycle.com** gehen Sie zur Unterstützung - Bedienungsanweisung, dann wählen Sie "B4FM".

Español

★ - Para el Manual del Usuario en Línea en Inglés, Español, Alemán Italiano, Francés Japonés... Visite **www.lexinmotorcycle.com**, vaya al Soporte - Manual de Usuario, y seleccione "B4FM".



Watch Instruction Video Online

English

★★ - Subscribe to our Youtube channel **@lexinmoto**, and find "B4FM" (with X icon button) Instruction videos.

*For the most updated instruction video, please click on the link that shows the X icon button and USB-C connector.

Français

★★ - Suivez notre chaîne Youtube **@lexinmoto**, Et trouvez les vidéos "B4FM" (Avec le bouton de l'icône X) Instruction.

*Pour la dernière vidéo d'instructions, veuillez cliquer sur le lien qui montre le bouton de l'icône X et le connecteur de USB-C.

Italiano

★★ - Iscriviti al nostro canale Youtube **@lexinmoto**, e trova i video di "B4FM" (con il pulsante con l'icona X) Instruction.

*Per il video di istruzioni più aggiornato, fare clic sul collegamento che mostra il pulsante con l'icona X e il connettore di tipo C.

Deutsch

★★ - Abonnieren Sie unseren YouTube-Kanal **@lexinmoto** und suchen Sie das Video "B4FM" (mit X-Taste) Instruction.

*Um das am neusten aufgenommene Bedienungsvideo zu schauen, klicken Sie bitte den Link. Im Video werden die Bedienungen des Gerätes mit X-Taste und USB-C Anschluss deutlich erklärt.

Español

★★ - Regístrese nuestro Youtube channel **@lexinmoto**, y encuentre videos "B4FM" (Con el botón del icono X) Instruction Finden Sie das Video " B4FM " Instruction.

** Por el video de instrucciones más actualizado, haga clic en el enlace que muestra el botón con el icono X y el conector tipo-c.



Function Introduction

Thank you for choosing the B4FM Motorcycle 10-Way Bluetooth Conference Intercom.

- Bluetooth 5.0
- Hands-free calling
- Built-in CVC/DSP noise reduction
- USB-C quick charge equipped
- Support voice prompts, power voice announcement
- Support Siri and other voice assistants
- Support universal pairing with most Bluetooth Intercom
- Support 1-10 B4FM devices connection, the longest intercom distance is 2Km/1.2miles.
- Connect to GPS Navigation
- Plays music and FM Radio
- Support Music Sharing

The B4FM is compliant with Bluetooth Specification V5.0 supporting the following profiles:

Headset Profile (HSP), Hands-Free Profile (HFP), and Advanced Audio Distribution Profile (A2DP). It supports universal pairing with almost all Bluetooth headsets on the market.

Battery

The B4FM features an 800 mAh battery which can provide the intercom device with 15 hours of music or 15 hours of intercom talk with over one week of standby time.

Function Priority: (The B4FM operates in the following order of priority)

- 1.Mobile phone
- 2.Intercom Talk
- 3.Music/FM Radio/GPS

Note: A lower-priority function is always interrupted by a higher-priority function. For example, stereo music can be interrupted by an intercom call, intercom talk can be interrupted by an incoming phone call.

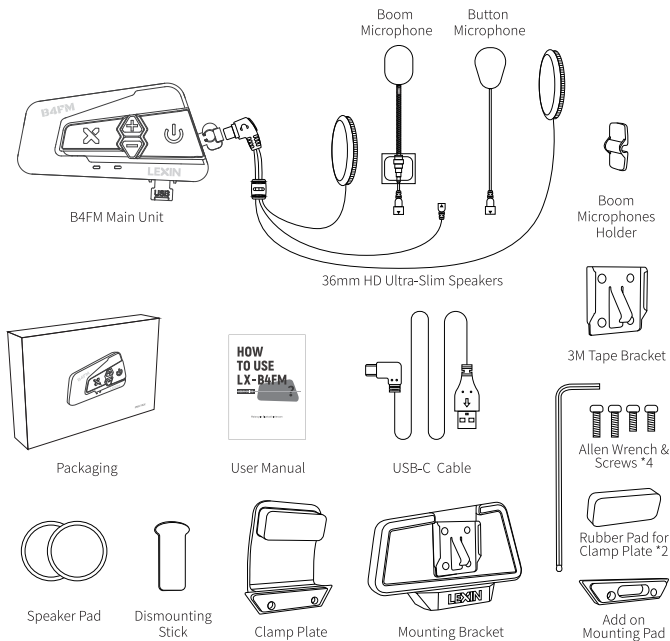
**WARNING**

PLEASE CHECK ALL LOCAL LAWS AND REGULATIONS REGARDING THE USE OF IN-HELMET SPEAKERS WHILE OPERATING MOTORIZED VEHICLES.



Package Contents

- B4FM Main Unit
- 36mm HD Ultra-Slim Speakers
- Boom/Button Microphones
- Boom Microphone Holder
- Mounting Bracket
- Clamp Plate
- Add on Mounting Pad
- 3M Tape Bracket
- User Manual/Quick Start Guide
- USB-C Cable
- Speaker Pad
- Allen Wrench & Screws *4
- Rubber Pad for Clamp Plate *2
- Dismounting Stick





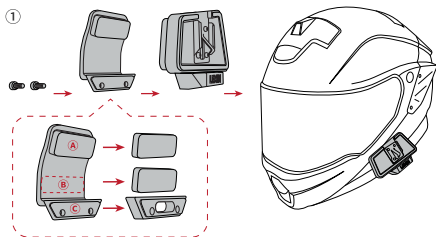
Installation Instructions

Installing Bracket for B4FM to Helmet

① With Screws

Mount the bracket between the internal padding and external shell of the helmet. Tighten the two screws between the bracket and Mounting Pad by using the included Allen wrench.

Note: According to the thickness of your helmet shell to add 0-2pcs rubber pads on the recommended position (A) and (B). If you need to add the plastic mounting pad on position (C) and please use the two longer screws, if not, please use two shorter screws.



②



② With Adhesive Pad

If you don't want to use the clamp plate mounting bracket or you have some problems with using it, you can use the 3M tape bracket to adhere it onto the helmet. Just peel off the protective backing sheet of the 3M tape bracket and adhere the bracket onto the helmet. Press for 15s and to allow the glue 24hours to dry.

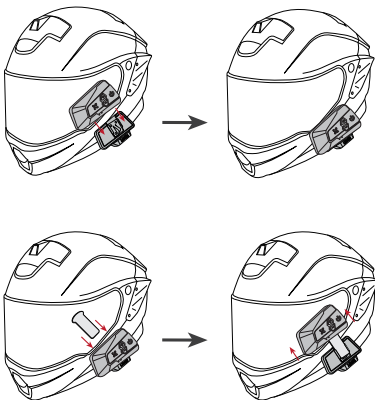
Note: Even though the 3M Tape bracket is provided for convenience, LEXIN recommends using the bracket mounting. The 3M Tape bracket is offered as an option that you may use at your own risk and responsibility, LEXIN does not assume any responsibility for use of it.



Mounting the B4FM Unit to Bracket

Mount the B4FM main unit on the bracket. Slide the main unit down onto the bracket until it clicks firmly into the bottom portion of the bracket.

To remove the main unit from the bracket, use the Dismounting Stick to insert it between B4FM unit and the mounting bracket, then push the B4FM main unit up from the bracket.



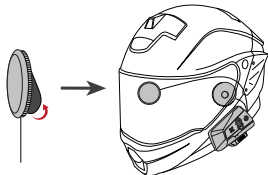
Installing Speakers

Note: The speaker with the shorter wire is for the left ear and the speaker with the longer wire is for the right ear, this will enhance the FM radio reception as well.

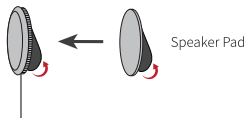
Step 1: Place the one half of the speakers velcro pad into the helmets inner padding.

Step 2: Push the speakers firmly against the velcro pads. If the helmet has deep ear pockets, you can use the provided spacers to place the speakers closer.

Step 3: Hide the wires between the helmet liner and shell.



Note: For helmets with deep ear pockets, you can use the included speaker pads to increase the thickness of speakers.





Installing Microphone

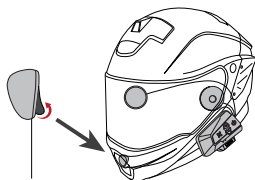
Note: The button microphone and boom microphone can be interchanged between full face or open face helmet. Choosing between the two is based on your preference and what fits best in the helmet(s).

Full Face Helmet/Button Microphone

Step 1: Locate an area in the center of the mouth section of the helmet to install and adhere half of the microphone velcro pad.

Step 2: Attach the button microphone to the attached velcro.

Step 3: Connect it to the headphone connector from the left.

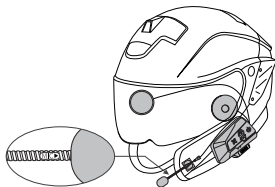


Open Face Helmet/Boom Microphone

Step 1: Adhere one half of the velcro pad to the base of the microphone and the other half to inside of the helmet under padding.

Step 2: Adjust the direction of the microphone so that the triangular mark on the microphone is pointing towards your mouth.

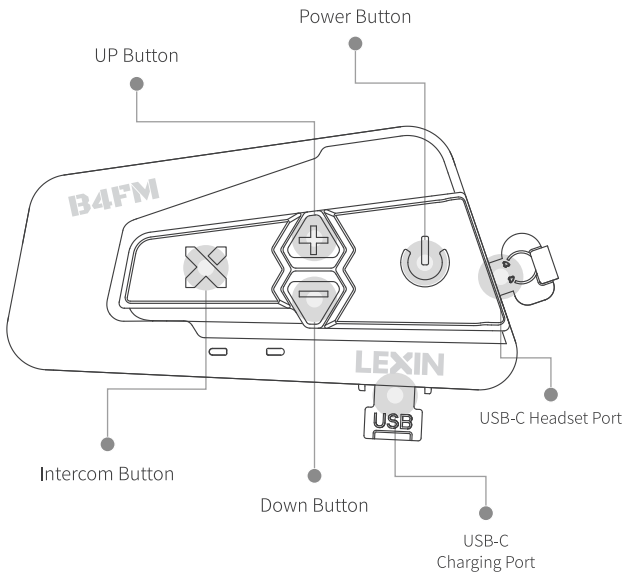
Step 3: Use the boom microphone holder for additional support to the microphone if necessary.





General Operation Instructions

Power on/off = Hold **X** +  for 1 second simultaneously



Powering On/Off

Power On: Long press the Power Button and Intercom Button for about 1 second to power on. The LED will blink blue only. The speaker will report "power on" and the current battery level.

Power Off: Long press the Power Button and Intercom Button for about 1 second to power off. The LED will blink red only. The speaker will report "power off".



Battery

Charging: Plug the USB-C cable into the USB-C port of the main unit and plug USB into the USB port on any DC 5V power supply to charge, such as mobile phone charger, computer, laptop or power bank, Etc. The LED turns **red** while charging and then turns **blue** when the main unit is fully charged. It takes about 3 hours to be completely charged.

Low Battery Alert: The device will notify you when the battery life drops low (below 30%). It will remind you every 5 minutes with a voice alert until the device powers off. This indicates around 1-1.5h of use remains. It will automatically shut down when the battery is below 20%.

Battery Life Prompt: Every time you turn on the unit, it will automatically report the current battery life.


While in standby mode, long press the Down Button for about 1 second, the B4FM device will prompt the current battery life.

Note: It will report one of five levels: 100%, 80%, 50%, 30%, LOW.

Pairing B4FM with Bluetooth Devices

Note: In the group intercom mode, one LX-B4FM device can connect up to two LX-B4FM devices and one mobile phone at the same time. It can automatically connect to your last paired device as long as Bluetooth is enabled or when the device is not connected and is in standby mode, click the Power Button to connect to the Bluetooth device.

Pairing Phone

Step 1: While Powered off, long press the **Power Button** () for about 5 seconds until the LED light flash blue and red alternately to enter pairing mode;

Note: Please do not use the Intercom Button instead of Power Button pairing your phone and GPS devices.

Step 2: Go to Bluetooth settings on your phone. Select "LX-B4FM", Some mobile phone may need PIN. Enter "0000" for the PIN if needed;

Step 3: Please confirm your phone if the pairing is completed;

Note: The LED will blink blue on B4FM device which indicates the connection is completed.

Pairing Bluetooth GPS Navigation

Step 1: While powered off, long press the Power Button for about 5 seconds until the LED light flash blue and red alternately to enter pairing mode;



Step 2: Follow pairing instructions for your specific GPS Navigation to connect to B4FM;

Note: You will be able to listen to Bluetooth voice instructions from Bluetooth GPS navigation once paired.

Phone Calls

Answer Call: Click the Power Button to answer when phone call is coming.

Auto Answer: Incoming calls will automatically be answered after 12 seconds.

Preset On/Off Automatic Answering: With power on state, long press the Up Button for about 5 seconds, the blue light quick flashes 3 times, indicating that automatic answering is on, or long press the Up Button for about 5 seconds the red light quick flashes 3 times, indicating that automatic answering is off.

End Call: Click the Power Button to end the call.

Decline Call: Double click the Power Button to reject the call.

Redial: When in standby mode, double click the Up Button, the last phone call will redial.

Voice Dial: While the device was paired with your phone, double click the Down Button to activate Siri or S-Voice. Simply speak the name from your phone list to dial.

Volume and Music Controls

Volume Up/Down: Long Press the Volume Up or Down Button, and it will prompt both when volume is maximum and minimum.

Note:

1. Only when in the music playing mode/FM Radio Mode/Intercom Mode/Phone Call status that you can adjust the volume.
2. When listen to the audio sources from your phone, you have to adjust the volume on your phone to get louder volumes.
3. Please single click the volume button to adjust the volume gradually, and long press the volume button to adjust the volume continuously.

Pause/Play: Click the Power Button to pause a song, click the Power Button again to resume playing.

Change Song: Double click the Up Button for next song, double click the Volume Down Button for the previous song.



Music Sharing: A B4FM device (A) that is playing music can share music to another B4FM device (B). When device A is playing music, double click Power Button on device A to enter music sharing mode. Then make sure device B is in standby state, double click Power Button on device B to search and connect device A, it will play the same music automatically once connected.

Stop Music Sharing: To quit music sharing mode, double click Power Button on either B4FM device.

Intercom Connection

The B4FM Bluetooth headsets use full-duplex Bluetooth intercom talk, pairing group internal intercom, divided into 4-way intercom mode and multi-way intercom mode, multi-way intercom mode can achieve up to 10 riders to be connected.

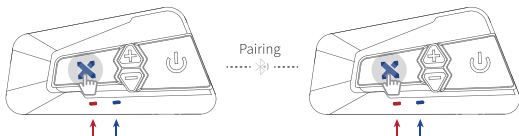
Note: Prior to pairing B4FM units for communications and riding, we strongly suggest that existing connections be cleared from unit. To clear existing connections, long press the Up and Down Button together for about 1 second until the red LED flashes quickly, all previous connections will be cleared from the unit.

Every time you turn on the B4FM device, the default is 4-way intercom mode, to switch into the multi-way intercom mode which is for more than 5 riders (including 5 riders), in the standby state, you need to long-press Power Button for about 8 seconds on all units, there will be a beep sound and the indicator light quick flashes red at the same time.

There is no memory function for this operation, so you have to switch it every time when connects over 5 units.

**Bluetooth Intercom Pairing & Connection**

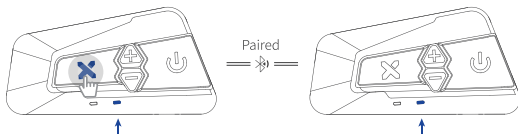
Step ① (2-Way Pairing) : Press the Intercom Button to pair 2 B4FM devices
Power on two B4FM units. Long press the Intercom Button on both two units about 1 second. LED of both two units will flash red and blue alternately which indicate they enter pairing mode.



Long press the Intercom Button about 1 second
until LED flash red and blue
(Unit One)

Long press the Intercom Button about 1 second
until LED flash red and blue
(Unit Two)

Click the Intercom Button on either unit to search and pair the other unit, the LED light flash blue quickly. Once pairing is completed, the LED will blink blue slowly on both two units.



Click the Intercom Button
until LED flash blue quickly
(Unit One)

LED flash blue quickly
(Unit Two)

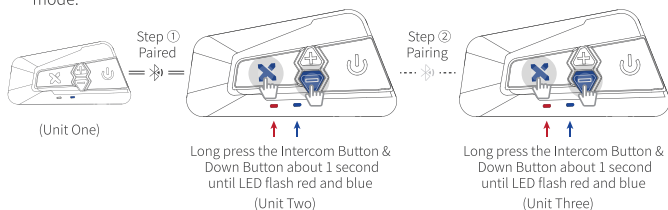
After pairing is completed, LED of both two units will flash blue slowly
and voice prompt pairing successful.

Note: If you only need to pair two B4FM devices, you only need to complete **Step ①**, and then start the intercom talk .

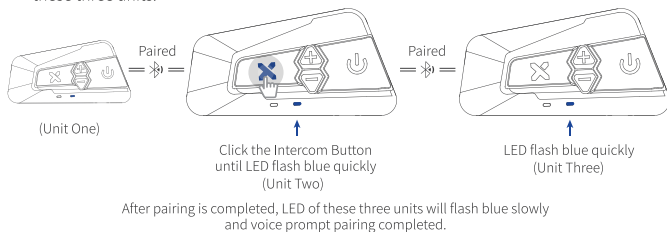
Start the intercom talk: Once the pairing is successful, click the intercom button on any one of these units to start an intercom talk. When in intercom mode, the LED light will blink blue and red simultaneously. Click the Power Button on any one of these units to make the device temporarily disconnect the current intercom; Click the Intercom Button on any one of these units again to resume the intercom talk.



Step ② (3-Way Pairing) : While completed **Step ①**, units 1&2 are paired, press the Intercom Button and down button to pair the second and third B4FM devices. Power on both the second B4FM unit and the third B4FM unit. Long press the Intercom Button and Down Button on both two units about 1 second. The LED of both two units will flash red and blue alternately which indicate they enter pairing mode.



Click the Intercom Button on either unit to search and pair the other unit, the LED light flash blue quickly. Once pairing is completed, the LED will blink blue slowly on these three units.



Note:

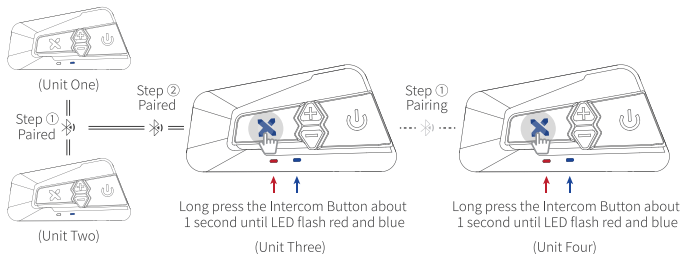
1. If you only need to pair three B4FM devices, you only need to complete **Step ②**, and then start the intercom talk .
2. If the second device is disconnected, other devices will also be disconnected.

Start the intercom talk: Once the pairing is successful, click the intercom button on any one of these units to start an intercom talk. When in intercom mode, the LED light will blink blue and red simultaneously. Click the Power Button on any one of these units to make the device temporarily disconnect the current intercom; Click the Intercom Button on any one of these units again to resume the intercom talk.

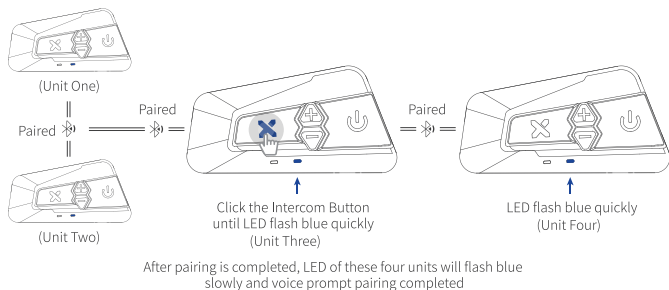


Four-way Pairing: While completed **Step ①** and **Step ②**, units 1&2&3 are paired, press the Intercom Button to pair the third and forth B4FM devices.

On the standby mode, long press the Intercom Button on the third and the fourth units about one second, the voice will prompt "pairing", then the LED light on both two units will flash red and blue alternately which indicate enter pairing mode.



Click the Intercom Button on either unit to search and pair the other unit, the LED light flash blue quickly. Once pairing is completed, the LED will blink blue slowly on these four units.



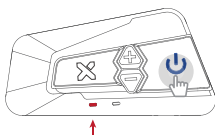
Start the intercom talk: Once the pairing is successful, click the intercom button on any one of these units to start an intercom talk. When in intercom mode, the LED light will blink blue and red simultaneously. Click the Power Button on any one of these units to make the device temporarily disconnect the current intercom; Click the Intercom Button on any one of these units again to resume the intercom talk.

Note: When one of the devices disconnects, the intercom group will be divided into two separate groups from the unit. Click the intercom button again to re-establish the intercom, the two independent intercom groups will be reconnected.



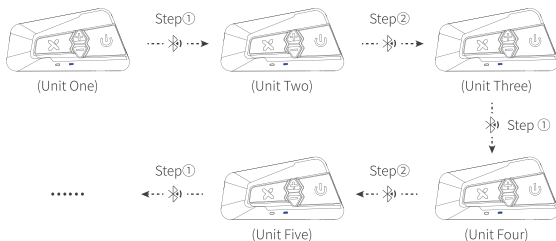
Multi-way group intercom

Every time you turn on the B4FM device, the default is 4-way intercom mode, and to switch into the multi-way intercom mode which is for more than five riders (including five riders), in the standby state, you need to long press Power Button for about 8 seconds on all units, there will be a beep and the indicator light flashes red quickly at the same time. There is no memory function for this operation, the default 4-way intercom mode is used every time you turn on the device, so you need to long press Power Button for about 8 seconds on all units to switch it into multi-way intercom mode every time when you need it.



Long press the power button about 8 seconds on each unit till the red light flash quickly then it will switch to multi-way group intercom mode.

Group Pairing: Please refer to the picture below and repeat the following steps to pair with more than five B4FM devices.



Note: Each B4FM device can only be paired with two other B4FM devices at the same time, that means, we pair the unit one after another in series to realize multiple group connections. For example, if unit three is paired with unit two and unit four, and it will not be able to pair with other devices.

Start the intercom talk: Once the pairing is successful, click the intercom button on any one of these units to start an intercom talk. When in intercom mode, the LED light will blink blue and red simultaneously. Click the Power Button on any one of



these units to make the device temporarily disconnect the current intercom; Click the Intercom Button on any one of these units again to resume the intercom talk.

Note: The intercom talk in the group will be divided into 2 separate intercom groups from the disconnected unit. Click the intercom button again to re-establish the intercom, the two independent intercom groups will be reconnected.

Clear The Pairing: Long press the Up and Down Button at the same time for about 1 second to clear the pairing, the red light will flash quickly.

Universal Pairing

To enter pairing mode

- Step 1: With power on state, long press the Intercom Button for about 1 second until the LED begins flashing blue and red alternately;
- Step 2: Follow your other Bluetooth device pairing instructions to enter pairing mode;
- Step 3: Click the Intercom Button on B4FM to search the other device and the LED light will flash blue and red quickly. After the pairing is completed, the LED light returns to the blue light flashing slowly;
- Step 4: To initiate universal intercom, click the Up Button and Down Button together to initiate intercom talk;
- Step 5: Click the Power Button to end the intercom talk.

FM Radio

On/Off:

Turn On FM Radio: Long press the Power Button for about 1 second to enter radio function.

Turn Off FM Radio: When the radio is on, Long press the Power Button for about 1 second to end radio function.

FM Radio Station Search:

Turn up: Double click the Down Button, the voice will prompt to adjust the radio station upwards.

Turn down: Double click the Up Button, and the voice will prompt to adjust the radio station downward.

Store up to 6 FM Radio Stations: In FM radio mode, when a favorite station is found, double click the Power Button to save it and there will be a tone to prompt. Support storing up to 6 FM radio stations. Once 6 stations have been saved, saving a new station will overwrite the oldest saved station. Click the Power Button to cycle through the saved station.



Maintenance & Certification

NOTE: This equipment has been tested and found to comply with the limits for a Class B digital device, pursuant to part 15 of the FCC Rules. These limits are designed to provide reasonable protection against harmful interference in a residential installation. This equipment generates uses and can radiate radio frequency energy and, if not installed and used in accordance with the instructions, may cause harmful interference to radio communications. However, there is no guarantee that interference will not occur in a particular installation. If this equipment does cause harmful interference to radio or television reception, which can be determined by turning the equipment off and on, the user is encouraged to try to correct the interference by one or more of the following measures:

- Reorient or relocate the receiving antenna.
- Increase the separation between the equipment and receiver.
- Connect the equipment into an outlet on a circuit different from that to which the receiver is connected.
- Consult the dealer or an experienced radio/TV technician for help

Changes or modifications not expressly approved by the party responsible for compliance could void the user's authority to operate the equipment.

This device complies with Part 15 of the FCC Rules. Operation is subject to the following two conditions:

- (1) this device may not cause harmful interference, and
- (2) this device must accept any interference received, including interference that may cause undesired operation.

Lexin Electronics Inc.
1(800) 380 - 8248
www.lexin-moto.com
FCC ID: 2ARGO-B4FM

Backed by 2-Year Warranty
For technical support :
tech@lexinmotorcycle.com

   @lexinmoto