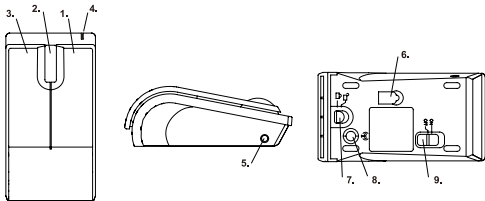


## Appearance



1. Right Button
2. Scrolling Wheel
3. Left Button
4. Low-Power-Alert LED (Orange)
5. Spare USB Power Supply Jack
6. Sensor LED (Red)
7. Upper Cover Lock
8. Receiver Link Button
9. Power Switch

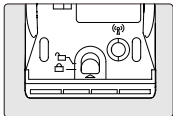
## Before Using

1. Install Batteries.
2. Turn the power on.
3. Pair the BTM-900 Bluetooth Mouse with your computer.

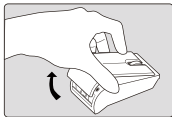
*Note: Please make sure that your Bluetooth software supports HID (Human Interface Device) profile before the pairing process.*

## Install Batteries

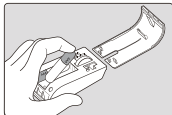
1. Un-lock the Upper Cover Lock.



- Remove the upper cover.



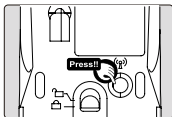
- Install two AAA batteries into the BTM-900 Bluetooth Piano Mouse's battery slot (if you had installed the batteries, please remove the old one before install the new batteries).



## Pairing Process

### - For Windows XP SP2

- Press the Pairing button on the bottom of the mouse for connection link.



- Open the Windows control panel, then select "Bluetooth devices".
- Click "Add..."
- Select "My device is setup and ready to be found", then click "Next".
- In "Peripherals (keyboards, mice, joysticks)", select BTM-900, then click "Next".
- Select "Don't use a passkey", then click "Next".
- The windows will start to connect BTM-900 automatically. Please press Finish button after the connection process completed.

*Once the connection between BTM-900 Bluetooth Mouse and your computer is established, the connection will keep permanently. That means the connection will re-establish automatically when the Windows runs.*

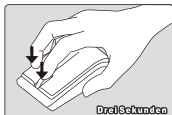
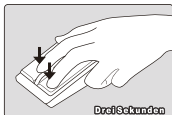
**- For Mac OS X 10.2.6 or later**

1. Press the Pairing button on the bottom of the mouse for connection link.
2. Click the Bluetooth icon in the task bar and select "Setup Bluetooth device".
3. Click "Continue" when the "Bluetooth Setup Assistant" shows up.
4. Choose "Mouse" and then press "Continue" to the next step.
5. The "Piano BTM-900 Mouse" is found by Bluetooth, please press "Continue" to the next step.
6. Click "Continue" when the "Passkey exchange with your mouse" shows up.
7. The process is finished successfully. The BTM-900 Piano Mouse is working now.

*Now you can use the BTM-900 Bluetooth Piano Mouse wirelessly with Bluetooth-enabled Apple computer. Afterward, the connection of the two Bluetooth-enabled devices will re-establish automatically when the Mac OS X runs.*

**Button Switch**

1. Press and hold both buttons for 3 seconds, then release buttons.



2. The left button and right button had been functional reversed.

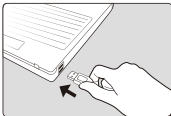


3. If you want to switch buttons back to its original functional definition, please repeat the above step 1 and step 2 for change.

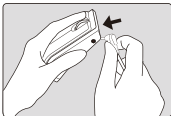


## ■ Spare USB Power Supply

1. Insert USB connector of spare USB power cable into your laptop.



2. Insert DC power connector of spare USB power cable into your BTM-900



## ■ Conserving power

When the mouse batteries are running low on power, the LED light on the Mouse turns orange, and blink.

*To use your mouse's Sleep mode based on the below steps:*

1. Do not use your mouse for five minutes. After five minutes of inactivity, the mouse automatically enters Sleep mode to conserve batteries' power.
2. To wake up the mouse, just move the mouse or click either mouse buttons.

## Table OF Contents

---

English .....	1
Español .....	5
Italiano .....	9
Deutsch .....	13
Françai .....	17
Ruskey.....	21

You are cautioned that changes or modifications not expressly   
approved by the party responsible for compliance could void   
your authority to operate the equipment.

This device complies with part 15 of the FCC rules. Operation is   
subject to the following two conditions

(1)•This device may not cause harmful interference and

(2)•This device must accept any interference received, including [  
interference that may cause undesired operation

1.•This transmitter must not be co-located or operating in   
conjunction with any other antenna or transmitter.

---