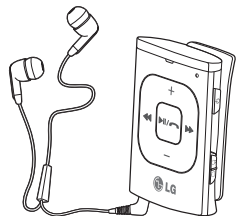




Quick Guide TV & MOBILE STEREO HEADSET

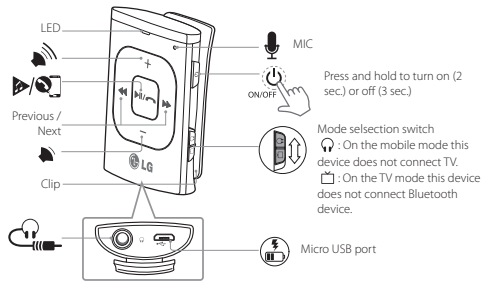
BTS1



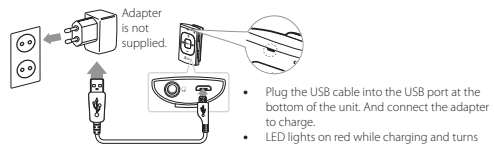
Rev 1.0 US

Please read this manual carefully before operating your set and retain it for future reference.

Product Overview



Charging

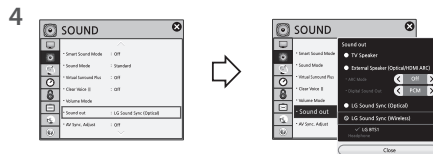


- Plug the USB cable into the USB port at the bottom of the unit. And connect the adapter to charge.
- LED lights on red while charging and turns into blue when charged.

Basic operation

TV Connection

This device can be paired with LG smart TV. You can listen to the TV sound comfortably via Bluetooth using this device. TV connection has available only if your smart TV has LG sound sync function.

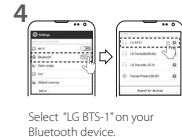


LG smart TV [SETTING] menu → [SOUND] → select [Sound out]

[LG Sound Sync (Wireless)] → select "LG BTS1"

Refer to the LG smart TV manual for more information.

Bluetooth Connection



Additional Information

- Keep the distance less than 10 m between Bluetooth device and the device.
- TV connecting time is approx. 10 ~ 20 seconds.
- Depending on the Bluetooth device, you need to enter the PIN code "0000".

Handsfree

This device supports a handsfree function via Bluetooth. Before using this function, pair the device with your Bluetooth device.

- Receiving/Finishing a call: Press button to accept an incoming call. Press button to hang up the call.
- Rejecting a call: Press and hold button to ignore an incoming call.
- Switching the voice output: Press and hold button for more than 3 seconds during a call.

Additional Information

- This device may not work properly depending on the manufacturer or device.
- Refer to LG Electronics homepage for more information about handsfree function. (www.lge.com)

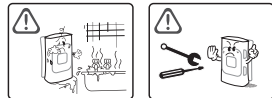
LED Indications and voice information

Power	LED indicator	Voice information
On	Blue / Blinks four times.	Power on
Off	Red / Blinks four times.	Power off

Performance	LED indicator	Voice information
Ready to pair	Blue / Turned on.	Discovering
Connected	Violet / Blinks twice.	Your device is connected

Battery	LED indicator	Voice information
High (more than 60%)	Blue / Blinks.	Battery high
Medium (more than 20%)	Violet / Blinks.	Battery medium
Low (less than 20%)	Red / Blinks.	Battery low
Charging	Red / Turned on.	-
Charged	Blue / Turned on.	-

Precautions



In the Box



Device



Earphone /Two sets of ear tips



USB cable

Troubleshooting

Symptom	Cause & Solution
No power.	<ul style="list-style-type: none"> The battery is discharged. Recharge the battery.
Bluetooth pairing does not work well.	<ul style="list-style-type: none"> Check selection switch. Initialize the pairing list by pressing button and button for more than 3 seconds at the same time, and then reconnect to Bluetooth device. Be sure your Bluetooth device is on. Remove the obstacle in the path of the Bluetooth device and the device. Depending on the type of the Bluetooth device or surrounding environment, your device may not be paired with the device.
No sound or sound distortion.	<ul style="list-style-type: none"> Be sure your Bluetooth device is on. The volume of this device or your Bluetooth device is set to minimum. When you use the other device at high volume, the sound quality may be distorted. Lower the volume of the devices. If you use this device for purposes other than listening to music, the sound quality may be lowered or the unit may not work properly.
Can not connect a call with the device.	<ul style="list-style-type: none"> Make sure your phone supports the Bluetooth® profile. Check the battery status by pressing button twice.
The device does not operate normally.	<ul style="list-style-type: none"> Please contact customer service.

Specifications

General	
Power Supply	5 V 0 2.0 A (USB cable) / Built-in rechargeable battery.
Earphone jack	Ø 3.5 mm
Communication	<ul style="list-style-type: none"> Bluetooth® V 3.0 Range of Frequency: 2.402 GHz — 2.480 GHz
Operating time	<ul style="list-style-type: none"> Stand by: Up to 10 days. Talk and Music play: Up to 8 hrs.
Charging time	Less than 2 hrs.
Dimensions (W x H x D)	Approx. 35.9 mm x 50.2 mm x 19.2 mm
Net Weight (Approx.)	18.4 g
Operating temperature	5 °C — 45 °C
Operating humidity	Less than 65 %

- Design and specifications are subject to change without notice.

Safety Information

Declaration of Confirmation

FCC Notice to Users:

This device complies with part 15 of the FCC rules. Operation is subject to the following two conditions:
 (1) This device may not cause harmful interference and
 (2) This device must accept any interference received, including interference that may cause undesired operation.

Important Note:

To comply with the FCC RF exposure compliance requirements, no change to the antenna or the device is permitted. Any change to the antenna or the device could result in the device exceeding the RF exposure requirements and void user's authority to operate the device.

Federal Communication Commission Interference Statement.

This equipment has been tested and found to comply with the limits for a Class B digital device, pursuant to part 15 of the FCC Rules. These limits are designed to provide reasonable protection against harmful interference in a residential installation. This equipment generates, uses and can radiate radio frequency energy and, if not installed and used in accordance with the instructions, may cause harmful interference to radio communications.

However, there is no guarantee that interference will not occur in a particular installation. If this equipment does cause harmful interference to radio or television reception, which can be determined by turning the equipment off and on, the user is encouraged to try to correct the interference by one or more of the following measures:

- Reorient or relocate the receiving antenna.
- Increase the separation between the equipment and receiver.
- Connect the equipment into an outlet on a circuit different from that to which the receiver is connected.
- Consult the dealer or an experienced radio/TV technician for help.

CE Notice to Users:

Hereby, LG Electronics Inc. declares that this device is in compliance with the essential requirements and other relevant provisions of Directive 1999/5/EC.



FCC ID: SSNBTS1