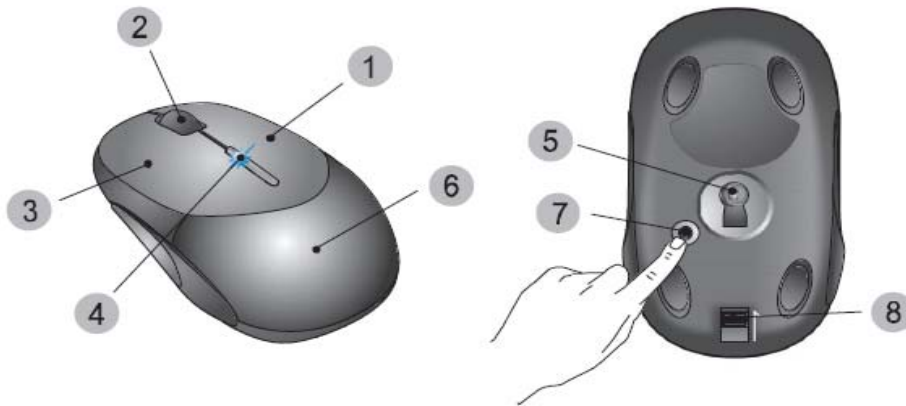


Exterior

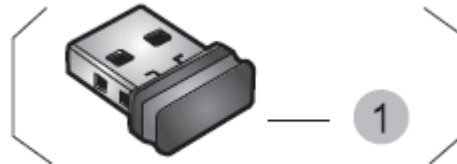
1) Mouse Body

|   |                                 |   |                                       |
|---|---------------------------------|---|---------------------------------------|
| 1 | Right-click Button              | 5 | Sensor                                |
| 2 | Scroll Wheel                    | 6 | Upper Cover (Battery Insertion Cover) |
| 3 | Left-click Button               | 7 | Power button/Bind button              |
| 4 | Lower Power indicator LED(Blue) | 8 | Upper Cover Knob                      |



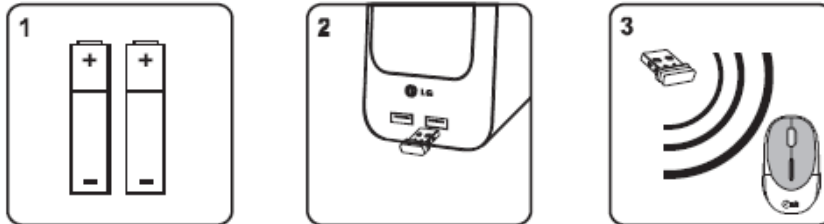
2) Receiver

1. USB Receiver



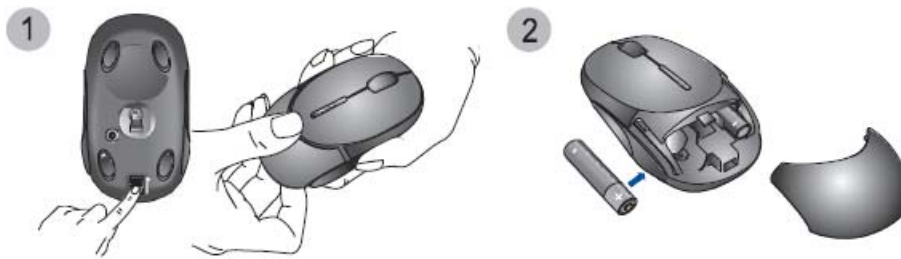
## To use the product

- 1) Insert the batteries.
- 2) Connect the receiver to the PC.
- 3) Establish communication line between the mouse and the receiver.



## Inserting Batteries

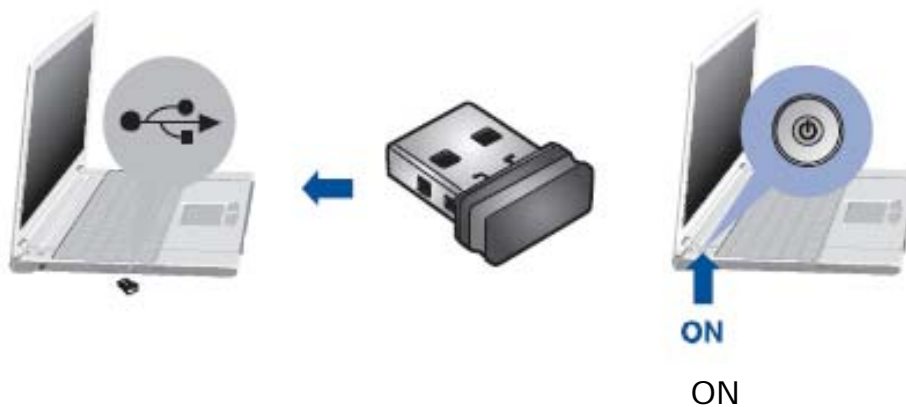
- 1) At the bottom of the mouse, follow the direction of the arrow to push gently, at the same time, to pull out the battery cover in opposite direction, to pull out the battery cover.
  - 2) Follow the arrow where how to put the batteries in the right direction
- ※ Electricity of the enclosed batteries begins to be discharged little by little immediately after production. Therefore, according to when the products are opened, battery life could be shorter than expected. The company requests users' understanding of such electricity discharge.



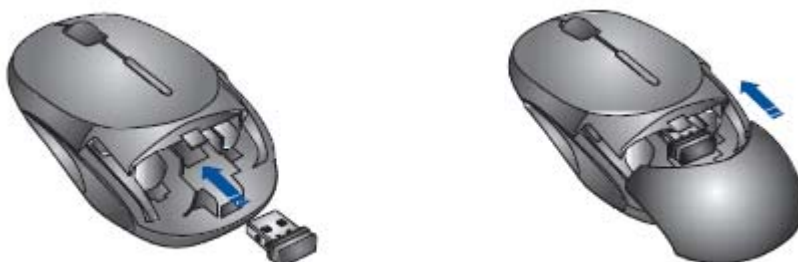
**Connecting the receiver to the PC**

Connect the USB receiver to an unused USB port on your computer

- 1) Turn on the computer power, mouse will working normally.
  - 2) If computer on, your PC will recognize the receiver and automatically install a basic driver.
- ※ Important: Please wait until a message or a window appears and then follow the instructions to the completion of the driver installation.

**To readily carry the mouse**

- 1) Open the battery case.
- 2) Insert nano wireless receiver inside the compartment by the direction of the arrow
- 3) Close the battery case back.



**To establish a wireless connection, please follow the instructions**

If the mouse LED is blinking blue, please replace the batteries.

If the mouse is not working

- 1) Make sure the mouse power is on(turn-on/working)
- 2) Check the battery capacity and installation.
- 3) Click bind button one time shortly.
- 4) Check receiver installation.
- 5) Try another USB port.

### **Battery Power Saving**

When not using the mouse, press the power button on the bottom of mouse for 3~5 seconds to shut down the mouse power for battery power saving. Then, press the power button for 1 to 3 seconds to re-start the mouse power.

### **Battery replacement indicator LED and low power mode of the mouse for prolonged use**

After being used for quite a while, the battery voltage drops. The lower power indicator LED (located on the upper area of the mouse) also turns on blue at about 80% of battery power used. When the LED is turned on, replace the battery as soon as possible. If the batteries are not replaced, the mouse cursor movement slows down.  
(Mouse may not work until batteries are replaced)

## Federal Communication Commission Interference Statement

This equipment has been tested and found to comply with the limits for a Class B digital device, pursuant to Part 15 of the FCC Rules. These limits are designed to provide reasonable protection against harmful interference in a residential installation. This equipment generates, uses and can radiate radio frequency energy and, if not installed and used in accordance with the instructions, may cause harmful interference to radio communications.

However, there is no guarantee that interference will not occur in a particular installation.

If this equipment does cause harmful interference to radio or television reception, which can be determined by turning the equipment off and on, the user is encouraged to try to correct the interference by one of the following measures:

- Reorient or relocate the receiving antenna.
- Increase the separation between the equipment and receiver.
- Connect the equipment into an outlet on a circuit different from that to which the receiver is connected.
- Consult the dealer or an experienced radio/TV technician for help.

FCC Caution: Any changes or modifications not expressly approved by the party responsible for compliance could void the user's authority to operate this equipment.

This device complies with Part 15 of the FCC Rules. Operation is subject to the following two conditions: (1) This device may not cause harmful interference, and (2) this device must accept any interference received, including interference that may cause undesired operation.

### IMPORTANT NOTE:

#### Radiation Exposure Statement:

This equipment complies with FCC radiation exposure limits set forth for an uncontrolled environment.

End users must follow the specific operating instructions for satisfying RF exposure compliance.

To maintain compliance with FCC RF exposure compliance requirements, please follow operation instruction as documented in this manual.