

## 01 User Manual

### Federal Communication Commission Interference Statement

This equipment has been tested and found to comply with the limits for a Class B digital device, pursuant to Part 15 of the FCC Rules. These limits are designed to provide reasonable protection against harmful interference in a residential installation. This equipment generates, uses and can radiate radio frequency energy and, if not installed and used in accordance with the instructions, may cause harmful interference to radio communications.

However, there is no guarantee that interference will not occur in a particular installation.

If this equipment does cause harmful interference to radio or television reception, which can be determined by turning the equipment off and on, the user is encouraged to try to correct the interference by one of the following measures:

- Reorient or relocate the receiving antenna.
- Increase the separation between the equipment and receiver.
- Connect the equipment into an outlet on a circuit different from that to which the receiver is connected.
- Consult the dealer or an experienced radio/TV technician for help.

FCC Caution: Any changes or modifications not expressly approved by the party responsible for compliance could void the user's authority to operate this equipment.

This device complies with Part 15 of the FCC Rules. Operation is subject to the following two conditions:  
(1) This device may not cause harmful interference, and (2) this device must accept any interference received, including interference that may cause undesired operation.

### IMPORTANT NOTE

#### Radiation Exposure Statement

The equipment complies with FCC radiation exposure limits set forth for an uncontrolled environment. End users must follow the specific operating instructions for satisfying RF exposure compliance.

To maintain compliance with FCC RF exposure compliance requirements, please follow operation instruction as documented in this manual.

#### Keyboard Information:

FCC ID: S5MNC9U3202

Rating: 1.5V—10mA

#### Mouse Information:

FCC ID: S5MNC9U3202

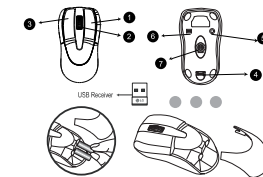
Rating: 3V—20mA

## 02 User English Manual

### Exterior

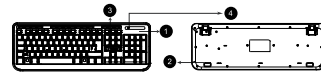
#### 1) Mouse & Receiver

1	Right-Click Button	5	Id Key
2	Scroll Wheel	6	Power on/off
3	Left-Click Button	7	Optical sensor
4	Battery door switch		



#### 2) Keyboard

1	Top cover	3	Batteries insertion Cover (open to upper direction)
2	Bottom cover	4	Lower Power indicator (red)



\*\* There is infrared Non-Light. Close Lock. Do not touch notification LED to extend longer life time without exchanging batteries because the LED consumes the power light.

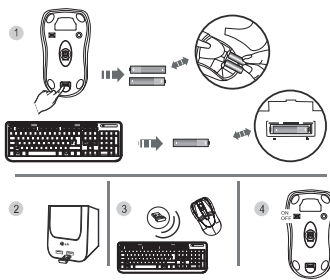
## User English Manual

**03**

### To use the products

- 1) Insert the batteries under the batteries insertion cover following → direction which are marked under the cover.  
After power on the computer completely insert and wait 5~10 sec while the program install.  
If your computer is already on just insert the receiver at the USB port and follow just like upper situation.
- 2) Connect between receiver and products
- 3) Turn on the power switch of the mouse which is located on the bottom cover.

※ Important: Please wait until a message or a window appears and then follow the instruction to the completion of the driver installation batteries insertion cover(push to arrow direction).



## 04 User English Manual

### If the products do not work normally, please follow the below.

If the products batteries warning LED is blinking red, please replace the batteries.  
Even the product does not work normally.

- 1) Make sure the mouse power is on and try to type any key on the keyboard
- 2) Check the batteries capacity and installation
- 3) Check receiver installation  
Control panel→System→Hardware→manage device→Human interface device  
There are USB human interface and LG Electronics Wireless Device or not.
- 4) If not, you should change the port and retry to install the program.

### Batteries Replacement indicator LED and low power mode of the mouse for prolonged use

After being used for quite a while, the batteries voltage drops.  
The lower power indicator LED (located on the upper area of the mouse/keyboard) also turns on red at about 90% of batteries power used every 5~10 seconds.  
When the LED is turned on, replace the batteries as soon as possible.

If the batteries are not replaced, his mouse cursor movement slows down and keyboard is not being typed normally.

※ Electricity of the endorsed batteries begins to be discharged after production.

Therefore, according to when the products are opened, batteries life could be shorter than expected. The company requests users' understanding of such electricity discharge!

\*Based on the environment the batteries life can be shorter such as hard to be connected wireless

### Power saving mode is available.

#### 1) Mouse

- When not in use, the mouse enters standby mode after 5 second and the mouse enters low power mode to save batteries power after 15 second.
- To off low power mode, move the mouse or click the left or right button

#### 2) Keyboard

- When not in use keyboard enters low power mode after 0.1 second.
- To off low power mode, type the any keys.