



# UP3 FLAT

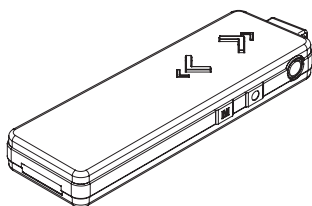
## User's Manual

1. Introduction
2. System requirement
3. Components
4. Buttons & functions
5. PC Connecting
6. Copying files
7. Recharging
8. Unplugging safely
9. Recording
10. Mode Change
11. Troubleshooting
12. Caution
13. Specification
14. Firmware update

## 1 Introduction

---

- Congratulations on purchasing UP3 FLAT.  
IT focused on easy-to-handle & slim size.  
You can use it as a USB Drive, MP3 Player and Voice Recorder.



- To download software or manual, go to <http://www.lge.com>  
Also it provides UP3 FLAT related service on
  - > Download (Software or Manual)
  - > Select Continent / Select Country
  - > Flash memory media > UP3 FLAT

## 2 System requirement

---

- Below version of Operating System with a USB port on the PC.  
Windows 98, 98SE, ME, 2000, XP (Win98/SE needs to install driver before using)  
/ Mac OS 9.0 or later / Linux 2.4.0 or later.



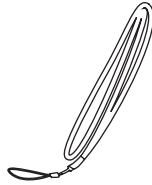
## 3 Components



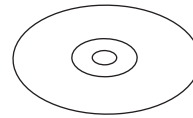
Player



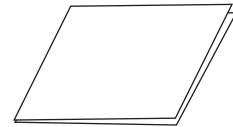
Earphone



Neck Strap



Install CD



Quick Guide

\*Products can be changed without prior notice!

## 4 Buttons & functions

Skip track	
Hold less than 1sec	1 track
Hold 1 sec	5 track
Hold 2 sec	10 track
Hold 3 sec	15 track

\*In Record mode, Seek voices in track

On, Off	
Hold more than 2sec	On
	Off

Play, Pause	
Hold less than 1sec	Play
	Pause

\* No files (For playback), LED colors will change Orange → Sky blue → Pink

Repeat Section ( A ← → B )		LED Color
Hold less than 1sec (in playback)	Start ( A )	● Green
	End ( B )	● Blue

Change the mode		LED Color
Hold more than 2 sec	Music Playback mode	○ by Battery
	Voice recording & Playback mode	○ by Battery

Recording		LED Color
Hold less than 1sec (in RECmode)	Pause	Blink per 5 sec ● Green
	Record	Blink per 2 sec ● Red
	Playback	Blink per 10 sec ● Green

Replay track		LED Color
Hold less than 1sec (in playback)	Replay one track	● Red
	Random	● Green
	Replay whole tracks	● Blue

Equalizer		LED Color
Hold more than 1sec (in playback)	Classic	● Orange
	Jazz	● Sky Blue
	Rock	● Pink
	Basic	● Purple

\* When hold is on, play button will not work, and a LED indicator will blink three times

\* If you escape from repeat mode, press any key but volume button

## 5 PC Connecting

- Use UP3 FLAT as a USB Drive according to your Operating Systems

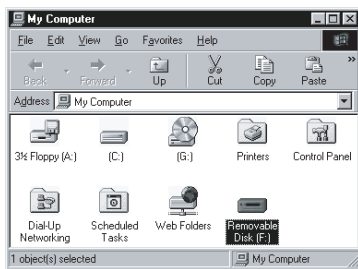
For Windows 98/SE, you should install USB Driver on your system in order for your PC recognize UP3 FLAT . Please set up USB driver with install CD supplied.

- Windows ME/2000/XP

Connect UP3 FLAT to the USB port.

Double click "My Computer" and check if Movable Disk is appeared.

Use "Remove Hardware Safely" in the right lower corner of the task bar to disconnect.



Windows OS



MAC OS

- MAC OS

Connect UP3 FLAT to the USB port . You can see another haddisk on the Desktop screen with the name of "Untitled" .

Simply drag and drop on the "Trash" to disconnect UP3 FLAT from your computer.

- LINUX OS

1. Login to the "root" after boot up your computer.
2. Booting with X-window and open terminal windows (xterm, hanterm).
3. And then Connect UP3 FLAT to the USB port.
4. Create "lgusb" folder with typing of "mkdir /mnt/lgusb".
5. Mount "lgusb" with typing of "mount /dev/sda1 /mnt/lgusb"
6. Check if it mounted like this "/dev/sda1 127684 8 127676 1% /mnt/lgusb" by typing "df".
7. To remove UP3 FLAT , close all files in use and then unmount by type "umount /dev/sda1".
8. If "mnt/lgusb" directory is located, UP3 FLAT can not be unmounted. For the mount managing, use "Disk Management" located in "GNOME" under the Red Hat Linux.

## 6 Copying files

Connect UP3 FLAT to the USB port first. And you can see the Movable Disk on your desktop. You can copy all files on it.

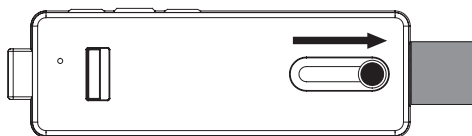
- MP3 files can be played in Jukebox / Record folder.
- UP3 FLAT supports the MS DRM. Please check first if MP3 files you are to purchase through internet is applied by Microsoft (MS DRM).
- This Product does not provide PC contents S/W.

## 7 Recharging

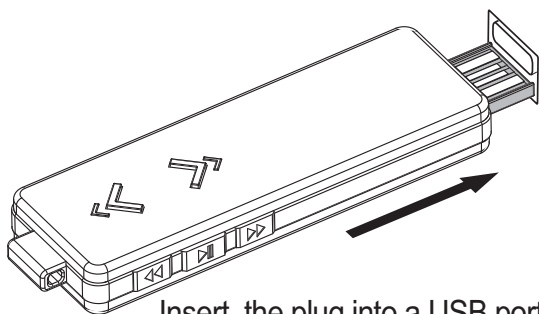
If UP3 FLAT is connected to the USB port for data transferring or downloading During connect UP3 FLAT to PC, it will be charged automatically.

- Charging : 80% ( approx. takes 1hour ~1hour 30min.) / 100% (approx. takes 1hour 30min.~2hours)
- Red color indicates less than 80%, Blue color indicates more than 80% charge.
- UP3 FLAT offers app.10 hours playing time at MP3 128Kbit/s test results.
- UP3 FLAT rechargeable battery offers 6month warranty. If you need service after warranty period, it may be charged.

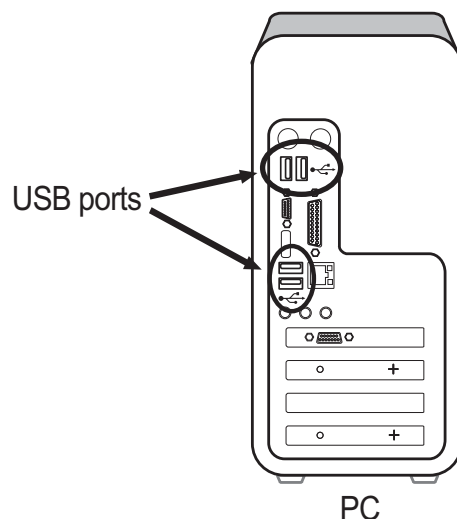
Battery		LED Color
Charge	During Charge	● Red
	Charge completed	● Blue
Condition (During Playback)	Full	● Blue
	Middle	● Green
	Low	● Red



Push the USB plug out of UP3 FLAT

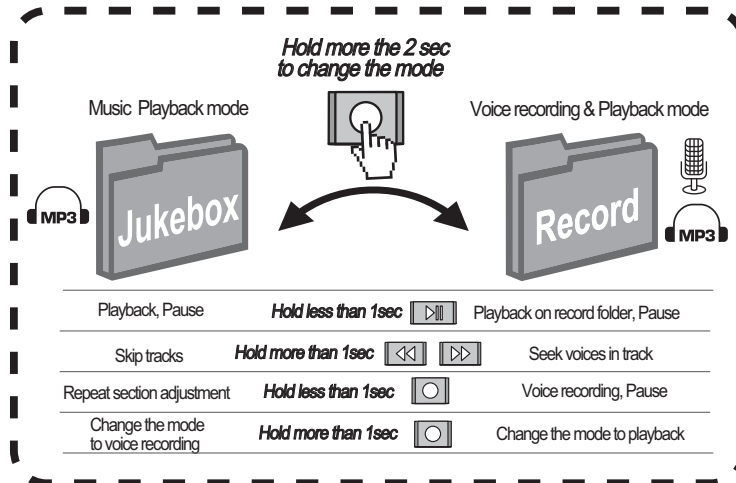


Insert the plug into a USB port



PC

## 10 Mode Change



## 11 Troubleshooting

### 1. My Windows PC doesn't recognize UP3 FLAT.

- Reset your UP3.
  - Retry with a different USB port.
  - Restart your computer.
- \* Sometimes simply restarting your computer can resolve issues.

### 2. Still can't see your UP3 FLAT ?

Several things could keep UP3 FLAT from appearing in Windows or Mac.

- Laptop or portable connecting via USB?  
UP3 FLAT needs a high-power USB port. If you connect more than one device to a USB port, please disconnect all and try again.
- Your computer doesn't meet UP3 system requirements.  
If you use Window 98/SE, please install software before connecting it to an USB port.

### 3. How to charge the battery ?

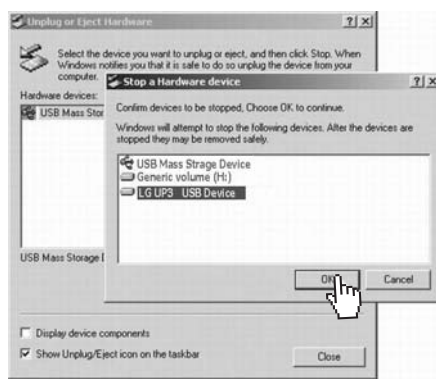
- To charge UP3 FLAT battery, connect the device to a high-power USB port.
- Please be aware that USB keyboards and non-powered USB hubs generally do not have high-power USB ports. If you connect to a low or non-powered port, UP3 will not charge.
- Once it is plugged in, it will take about 1hour 30min to charge the battery to 80% capacity and about 2 hours to charge it to 100%.

## 8 Unplugging Safely

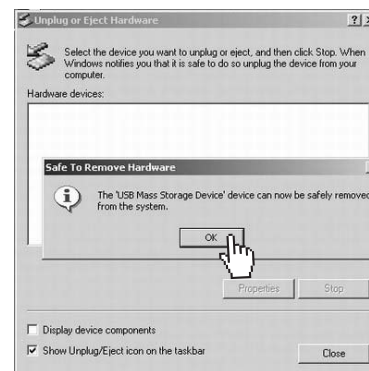
- Prior to disconnect the unit has to be detached at the operating system. Otherwise data losses may occur. Proceed as follows.



Double click the icon



Click "USB Mass Storage Device"



Click "OK"

- Double click on the icon Remove Hardware or Eject in the right lower corner of the task bar. (XP:Remove Hardware Safely")
- Click " USB Mass Storage Device", first. Choose "LG UP3 USB Device" and Click OK.
- UP3 FLAT is removed and disconnected safely after carrying out the above steps.

## 9 Voice recording

- Hold REC button more than 2second. The mode will be changed to voice recording and playback mode.
  - \* The mode LED indicator will blink green.
- When you press REC button shortly, voice recording will start. To stop voice record, you need to press the button again.
  - \* During voice recording , the mode LED indicator will blink red.

#### 4. UP3 FLAT doesn't respond or won't turn on.

If your UP3 FLAT doesn't respond or won't turn on, check for these possible causes

- Check the switch on the back.
  - \* If you can not turn UP3 FLAT on, the switch is in the locked position.
  - \* Move it to the unlocked position, and UP3 FLAT will turn on.
- If the switch is not in the locked position, battery may be low.  
Please charge UP3 FLAT and turn it on again.
- Do not use the USB port on a keyboard or non-powered USB hub with UP3 FLAT, as these low-powered ports will not be able to charge it.

#### 5. How much will my in-warranty service be ?

- Service is performed at no charge for twelve(12) months on repairs that are covered under the LG Electronics one-year limited warranty.

#### 6. Will the data on my UP3 FLAT be preserved ?

- No. Songs and files will not be transferred to your replacement UP3 FLAT.
- Make sure to back up important files, and remove all data from your UP3 FLAT before sending it to LG Electronics.  
LG Electronics is not responsible for any data sent in connection with service.

#### 7. How I can record voice and playback ?

- Hold REC button more than 2seconds. The mode will be changed to Voice recording and playback mode. The mode LED indicator will blink green.
- When you press REC again, you can start recording.
- Press play button if you need to listen to the voice recorded file.

## 12 Caution

---

- Too high volume while walking the street can be caused traffic accident.
- Too high volume in long time can make ear problem.
- Please avoid direct exposure to the magnetic, fire and chemical.
- Make sure of USB port's correct polarity of your PC. Serious damage of USB Device or even fire can be taken place by wrong polarity connection.
- Please remove earphone from UP3 FLAT before connecting to USB port.
- Makers are free from data loss you have created. Please keep your data safely to prevent sudden losses or damage.



## 13 Specification

Item		Specification
H/W	Capacity	512MB/1GB/2GB
	Display	LED Indicator
	Interface	USB 2.0
	Battery indicator	LED (Blue/Green/Red)
	Charge duration	60 min(over 80%) / 120~180min (100%)
	Size(mm)	25 x 75.4 x 9.6 (W x H x D)
	Play Back	Up to 10Hr
S/W	Audio format	MP3, WMA, ASF, OGG
	REC / Play & Pause	Voice Recording / Music Playback
	Forward/Rewind	Skipping tracks (1,5, 10, 15)
	Seek	Yes (in RECORD folder)
	Track repetition	Replay 1 track, Auto reverse, Random
	Repeat section	Yes
	Equalizer	Classic, Jazz, Rock, Basic
DRM	MS DRM (PD DRM 9)	
Other	Accessory	Ear phone, Neck strip, CD, Quick guide
	Package	Gift box, Blister
	System Environment	Win 98/ME/2000/XP, Mac 9.0 or later, Linux kernel 2.4.0 or later
Warranty	Battery	6 month
	Product	1 year

## 14 Firmware Update

- **Step 1** Power off UP3 FLAT and then connect to the USB port.
- **Step 2** Go to website [www.lge.com](http://www.lge.com). and Download the Firmware.
- **Step 3** Copy the firmware onto UP3 FLAT.
- **Step 4** Unplug UP3 FLAT from the USB port.
- **Step 5** Use "Remove Hardware Safely" when you disconnect UP3 FLAT.
- **Step 6** Power on UP3 FLAT, updating will be completed after various color LED blinking.

\* Continuous firmware upgrade supports are available.

\* Prior to updating, please back up your files in safe.





### FCC Information

This device complies with Part 15 of the FCC Rules. Operation is subject to the following two conditions:

- (1) This Device may not cause harmful interface, and
- (2) This device must accept any interference received, including interference that may cause undesired operation.

Note: This equipment has been tested and found to comply with the limits for CLASS B digital device, pursuant to Part 15 of FCC Rules. These limits are designed to provide reasonable protection against harmful interference when the equipment is operated in a commercial environment. This equipment generates, uses and can radiate radio frequency energy and, if not installed and used in accordance with the instructions, may cause harmful interference to radio communications. However, there is no guarantee that interference will not occur in a particular installation. If this equipment does cause harmful interference to radio or television reception, which can be determined by turning the equipment off and on, the user is encouraged to try correct the interference by one or more of the following measures:

- 1.1. Reorient or relocate the receiving antenna.
- 1.2. Increase the separation between the equipment and receiver.
- 1.3. Connect the equipment into an outlet on a circuit different from that to which receiver is connected.
- 1.4. Consult the dealer or experienced radio/TV technician for help.

### WARNING

Changes or modifications not expressly approved by the manufacturer could void the user's authority to operate the equipment.