

# Using Media Browser

## Setting the wireless network

There are **two methods** for setting the wireless network.

**Setting method 1** If you use the wireless LAN card for the first time, take the steps described in the 'Setting method 2'.

**Setting method 1** If you're familiar with wireless LAN card setting, take the steps described in the 'Setting method 2'.

You should configure your computer network and install the Media Library program first to view or play back the picture, music or the movie in your computer using the Media Browser function of the wireless TV.

If your computer is not installed with the wireless LAN card, it is possible to purchase this product.

You should purchase the wireless LAN card (or Access Point(AP)) separately **802.11g** adaptor (or 802.11g Access Point(AP)) that complies with Wi-Fi.

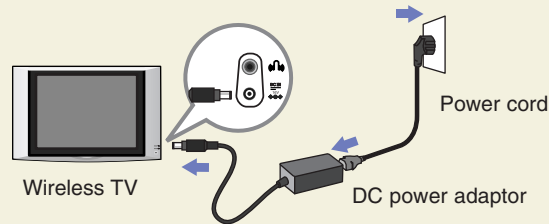
You cannot use the **802.11a** wireless LAN card (or, **802.11a** Access Point(AP)) for this wireless TV.

We recommend that you use the USB type adaptor that is easy to configure, or the wireless LAN card that runs in 802.11g only.

### Setting method 1

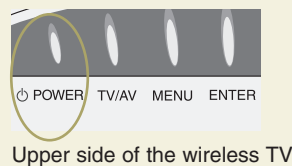
# 1

Connect the power to the wireless TV.



# 2

Turn on the wireless TV.

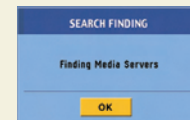


or



Switch to the **'Media Browser'** by pressing **TV/MEDIA** button.

**'SEARCH FINDING'** or **'SEARCH FAILURE'** window will appear on the TV screen as shown in the figure. Do not click the **[OK]** on the screen but take the following steps.



or



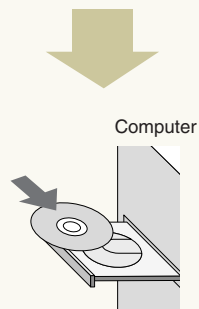
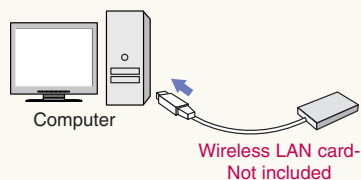
# Using Media Browser

**3** If the computer to install the Media Library is not equipped with the wireless LAN card (or, Access Point(AP)), install it first.

\* Ensure to read the User's Manual provided by the vendor of the wireless LAN card (or, Access Point(AP)) to learn about how to install the wireless LAN card.

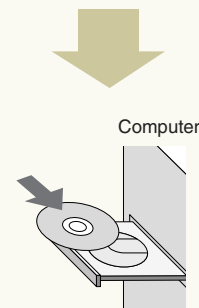
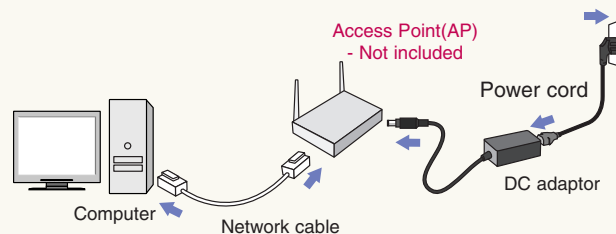
\* For the wireless LAN card (or, Access Point(AP)) that supports both **802.11b** and **802.11g**, set the adaptor to run in **802.11g** only. <See the User's Manual of the wireless LAN card (or, Access Point(AP))> If you mix **11g** and **11b** when using the adaptor, link speed will drop.

## When using the wireless LAN card



- Install the wireless LAN card driver files after installing it. Once the driver is successfully installed, go to step **4**. 'Setting the wireless network in the computer'.

## Access Point(AP) When using the



- Install the Access Point(AP) driver files after installing it. Once the driver is successfully installed, go to step **4**. 'Setting the wireless network in the computer'.

# Using Media Browser

## Setting the wireless network in the computer

4

\* Set the computer SSID (Network name), WEP key, and connection mode as follows by referring to the User's Manual for the wireless LAN card (or, Access Point(AP)) that you purchased.

### When using the wireless LAN card

#### 1 SSID (network name)

\* Set to "LGMB" (Case-sensitive)

#### 2 Set WEP key as 'Not in Use'.

#### 3 Set the Connection Mode as 'Networking between computers (Ad-hoc or peer-to-peer)'

#### 4 Setting Internet protocol TCP/IP

Choose one of the following two setting methods.

##### ■ 'Obtain an IP address automatically'

Performance can drop when connecting the computer to the wireless TV through wireless connection – up to 2 minutes delay.

##### ■ 'Use the following IP address (manual)' (recommended)

**IP address:** 169.254.XXX.XXX (Input any number between 1 and 254 for XXX.) e.g., 169.254.45.200

**Subnet mask:** 255.255.0.0

**Gateway:** Do not input any IP.

When setting is complete, do not turn off the wireless TV but install the Media Library as described in step 5.

### When using the Access Point(AP)

\*Make sure to read the User's Manual of the Access Point(AP) provided by the vendor before setting the Access Point(AP).

#### 1) Setting the Access Point(AP)

##### 1 SSID (Network name)

- Use the existing SSID(network name) without change, or input new SSID(network name) (case-sensitive) to use. e.g., LGMEDIA

##### 2 Set WEP key as 'Not in Use'.

##### 3 Setting Internet protocol TCP/IP

- Set the Access Point(AP) IP address as 192.168.0.1 and subnet mask as 255.255.255.0.
- If Access Point(AP) provides the DHCP Server function, activate it. (recommended)

#### 2) Setting the computer

- Connect the Access Point(AP) to the computer using the Ethernet cable.

##### 1 Setting Internet protocol TCP/IP

Choose one of the following two setting methods.

##### • 'Obtain an IP address automatically'

If you have activated the DHCP Server function when setting the Access Point(AP), select the "Obtain an IP address automatically" option.

##### • 'Use the following IP address (manual)' (recommended)

Set as follows if you have not activated the DHCP Server function when setting the Access Point(AP) or the Access Point(AP) does not provide it.

**IP address:** 192.168.XXX.XXX (Input any number between 2 and 254 for XXX.) e.g., 192.168.0.200

**Subnet mask:** 255.255.255.0

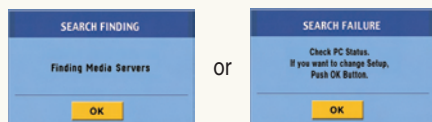
**Gateway:** 192.168.0.1.

To be continued on the next page.

# Using Media Browser

Set only when you use the **Access Point (AP)**.

Take the following setting steps when Access Point(AP) setting is complete.



Press the [OK] in the 'SEARCH FINDING' or 'SEARCH FAILURE' window on the TV screen, using the remote control button.

The setting screen will appear.



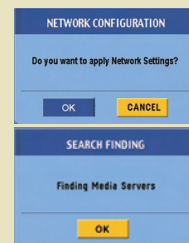
\* Your wireless TV IP Address may be different from the one described in this manual.

Move to 'Select Network' field using the and button on the remote control.

Find the **SSID(network name)** you have set in the computer using the and button on the remote control, and press the button. e.g., LGMEDIA

- If you select the 'Obtain an IP address automatically' option, select 'Automatic'. If you select automatic network setting, the IP Address, Subnet mask and Gateway will not appear in the wireless TV. (No setting is required.)

- If you select the 'Use the following IP address' option, select 'Manual' and set the fourth column of the IP Address different from the Access Point(AP) and the computer. If you set the same address, it will not run.  
e.g., Wireless TV: 192.198.0.110, Access Point: 192.168.0.1, Computer: 192.168.0.200  
Subnet Mask: Set the same value with the Access Point(AP). e.g., 255. 255. 255. 0  
Gateway: Input the IP address set in the Access Point(AP). e.g., 192.168.0.1



Press the button on the remote control.

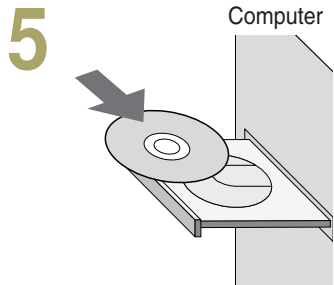
When the Network Setting Confirmation window appears, press the button on the remote control.

When the Find Media Server window appears as shown left, insert the Media Library Installation CD into the computer.

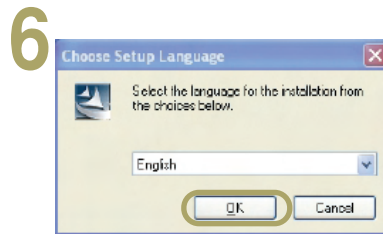
# Using Media Browser

## At your computer : Installing the 'Media Library' Server in you computer

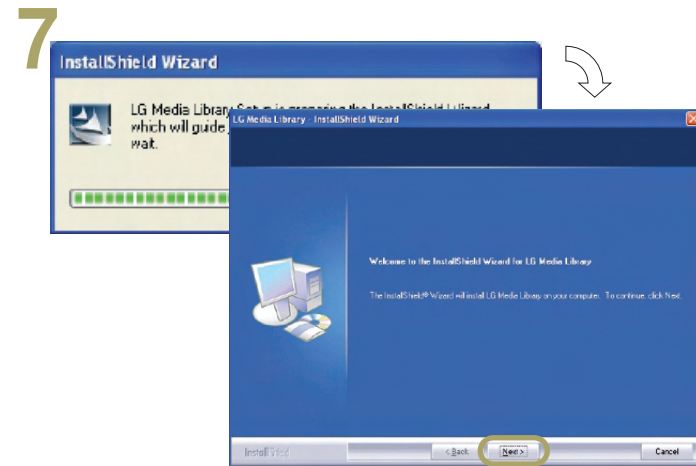
Once the 'Media Library' program is installed in your computer, you can view the picture or play back music or movie by connecting the wireless TV to the Media Browser. You should install the program first to use the Media Browser in the wireless TV.



- Insert the installation CD into the CD-ROM drive. Wait until the installation message appears.



- When the Install Media Library window appears, select the language (English/Korean) and click the **[OK]**.
- If the installation window does not appear automatically, double click the 'setup.exe' file in the CD manually.



- When installation is ready to proceed, click the **[Next]** button.

### Minimum PC requirement for installation

OS	CPU	RAM	Hard Disk	USB
Windows 98 Windows 98SE Windows ME Windows 2000 Windows XP	Pentium III 600MHz or faster	128Mb or more	1Gb or more	USB 2.0 support

\* Wireless LAN card should have the Access Point(AP) or NIC (Network Interface Card) that supports 802.11g.

\* Wireless LAN card should comply with Wi-Fi.

### Recommended PC specification

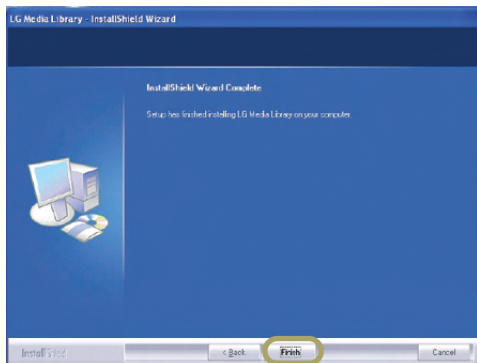
OS	CPU	RAM	Hard Disk	USB
Windows XP	Pentium IV 1.5GHz or faster	128Mb or more	40Gb or more	USB 2.0 support

\* Wireless LAN card should have the Access Point(AP) or NIC (Network Interface Card) that supports 802.11g.

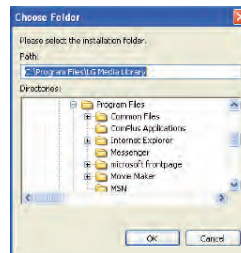
\* Wireless LAN card should comply with Wi-Fi.

# Using Media Browser

8

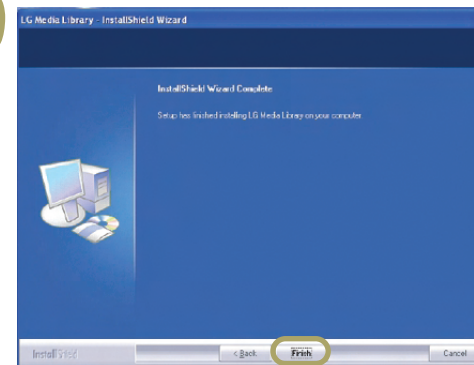


- Create a folder to install the Media Library.
- Click the **[Next]** to create the **'LG Media Library'** folder under the 'C:\Program Files' folder automatically.



- If you want to install the program at other folder, click the **[Browse]** and specify the folder.

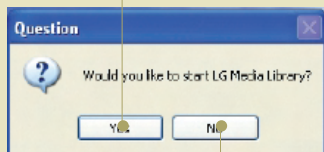
9



- Installation of the Media Library is complete.
- Click the **[Finish]** to complete installation.

10

- When the question window appears, click the **[Yes]** to run the Media Library.

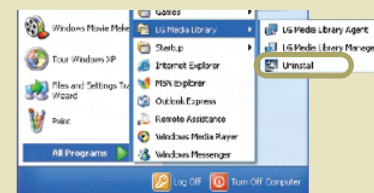


- When you run the Media Library, the Select Network Interface window will appear. Select the wireless network adaptor you have installed and click the **[Select]**.
- When the **'Media Library Manager'** window appears, share the folder you want. (See page 50)
- When the program is successfully installed, the initial screen of **'Home Media'** will appear on the wireless TV.



- The program icon will appear on the Windows Task Bar.

## Deleting the Media Library program



1. Select Start > All Programs > LG Media Library > Uninstall to uninstall the Media Library.

\* When system rebooting selection message appears, select the option you want and click the **[Finish]**.

2. You can also delete the Media Library program by selecting My Computer > Control Panel > All or Remove Programs.

# Using Media Browser

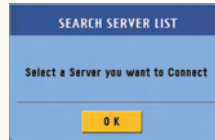
## 11


### When using the **Wireless LAN card**

- When the program is successfully installed, the initial screen of **'Home Media'** will appear on the wireless TV.




### When using the **Access Point (AP)**






Press the  button on the remote control when the **'SEARCH SERVER LIST'** window appears on the TV screen.



The IP address of the computer installed with the Media Browser will be displayed on the Select Media Server window.

If it matches with the computer's IP Address, press the .

If not, find the matching IP Address using the  and  button on the remote control and, press the .



- When the program is successfully installed as described above, the initial screen of **'Home Media'** will appear on the wireless TV.

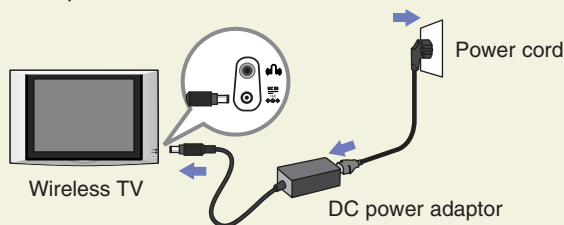
# Using Media Browser

## Setting method 2

If you're familiar with wireless LAN card setting, configure the wireless network of the computer and the wireless TV by referring to the following section.

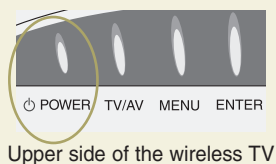
### 1

Connect the power of the wireless TV.



### 2

Turn on the wireless TV.



Upper side of the wireless TV

or




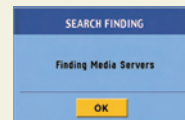
Remote control

Switch to the 'Media Browser' pressing TV/MEDIA button.



Remote control

The 'SEARCH FINDING' or 'SEARCH FAILURE' window will appear on the TV screen as shown in the figure. Press the [OK] using the  remote control button.



or



### 3



The Setting window will appear. The setting details are as follows.

1. SSID (network name): LG MEDIA
2. WEP key: Not In Use
3. Operation mode: ad-hoc
4. Internet Protocol TCP/IP: Obtain an IP address automatically

To change the settings, take the following steps.

(For your reference, the computer should have been turned on, and the wireless LAN card(or, the Access Point(AP)) also should have been configured in advance in the computer.)

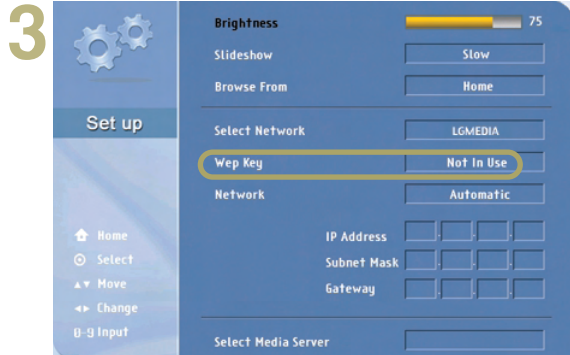
Move to 'Select Network' using the  and  button on the remote control.

Select the SSID (network name) set in the computer or the Access Point(AP) using the  and  button on the remote control.

Press the  button on the remote control when setting is complete.



# Using Media Browser



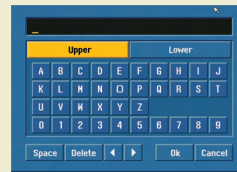
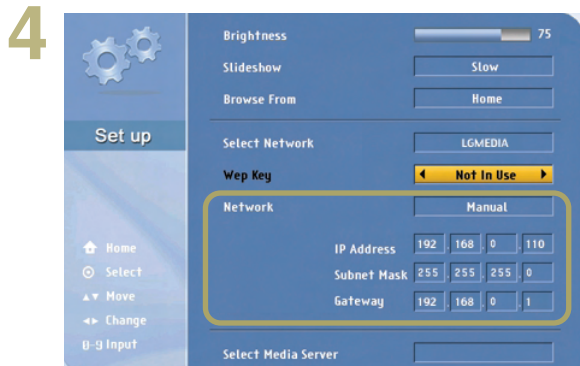
Move to WEP key using the and key on the remote control.

If you have set the WEK key in the computer (or, the Access Point(AP)), you should set the same WEP key in the wireless TV. (If not, you don't have to set the WEP key in the wireless TV.)

Select '64 bits' if the WEP key is 5 or 10 digit long. Or, select '128 bits' if it is 13 or 26 digits. Then, press the button on the remote control.

Input the WEP key when the virtual keyboard appears.

Press the **[OK]** on the virtual keyboard using the remote control button when setting is completed. For your reference, WEP key setting can slow down performance.



Virtual keyboard

Input the number or the character you want by pressing the , , , and buttons on the remote control.

Move to the Network section using the and button on the remote control.

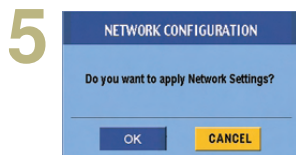
Select whether you want to set the IP Address automatically or manually.

Select '**Automatic**' if you select the '**Obtain an IP address automatically**' option for IP Address setting in the computer.

Otherwise (manual setting), input IP Address, Subnet Mask and Gateway using the number buttons on the remote control.

Set the fourth column of the IP Address different from the computer. If you set the same address, it will not run


e.g., Computer: 192.168.0.200, wireless TV: 192.168.0.110

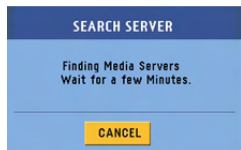


Press the button on the remote control.

Press the button on the remote control when the Network Setting Confirmation Window appears.

# Using Media Browser

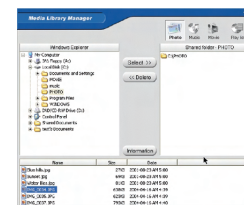
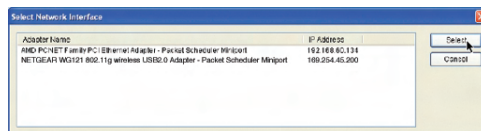
- 6** When network setting is complete, the **'SEARCH SERVER'** window will appear as shown left. Press the  button on the remote control to cancel. Do not then configure other items but install the Media Library in the computer. (See page 44.)



- 7** When Media Library installation is complete, run **'LG Media Library Agent'**. Then, the **'Select Network Interface'** window will appear. Specify the wireless LAN card adaptor you have installed.



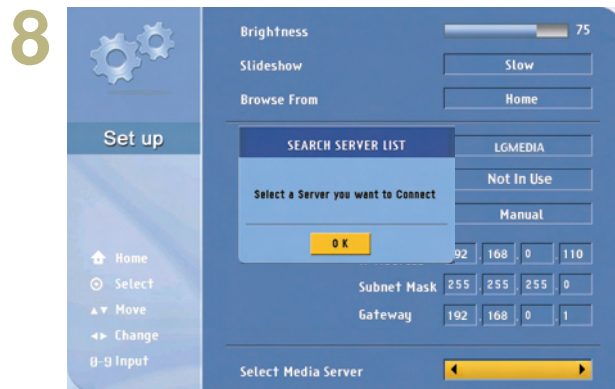
LG Media Library Agent








- Run LG Media Library Agent.

- Specify the wireless LAN card (or, Access Point(AP)).

- Share the folder to share when the **'Media Library Manager'** window appear. (See next page)



The **'SEARCH SERVER LIST'** window will appear if the Media Browser is successfully installed. Press the  button. Then, the IP address of the computer installed with the Media Browser will be displayed. If it matches with the computer's IP address, press the  button. If not, find the matching IP address using the  and  button on the remote control and, press the  button.

The Home screen of the Media Browser will appear and setting will be completed.



## Note

If the IP Address of the computer does not appear in the Select Media Server window, the wireless LAN card (or, Access Point(AP)) setting must be incorrect or the Media Library is not installed properly. In this case, check whether the wireless (or, Access Point(AP)) setting of the computer matches with that of the wireless TV, or the Media Library is properly installed.

# Using Media Browser

## Using Media Library Manager

Once the **Media Library** program is installed in your computer, you can view the picture or play back music or movie by connecting the wireless TV to the Media Browser. Pictures, music files and movie files should have been shared using the Media Library Manager to view the picture or play back music or movie stored in the computer.

### At your computer

1



LG Media Library Agent

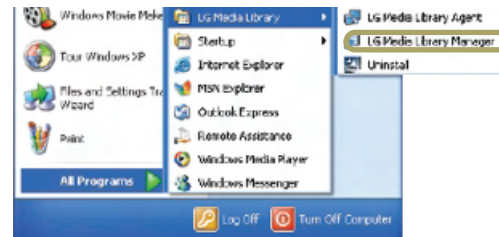
- Double click the Media Library icon on the Desktop window to start the program.

2



- Once the program is started, the Media Library icon will be activated in the Windows Task Bar. Click with the right mouse button to start the Media Library Manager.

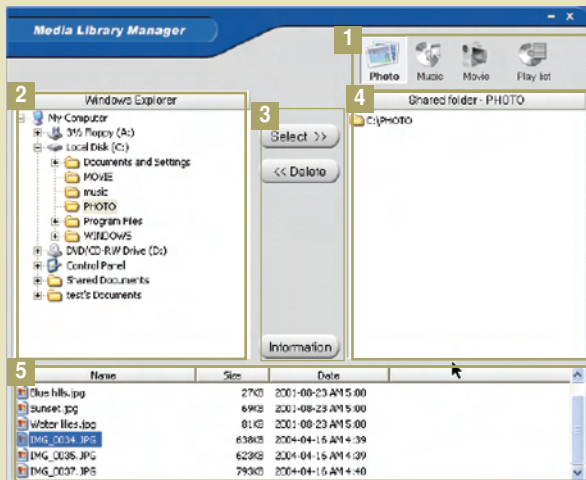
To start with a different method,



1. Select Start > All Programs > LG Media Library > LG Media Library Manager to use the Media Library Manager program.



2. Click the right mouse button to use the Media Library Manager.



### 1 Menu selection button

**Picture:** Manages picture file share folder.

**Music:** Manages music file share folder.

**Movie:** Manages movie file share folder.

**Playlist:** Manages the playlist (See page 54)

### 2 Windows Explorer

You can find the folder to add to the Shared folder (4).

You cannot move the local disc drive to the Shared folder. e.g., C or D drive.

### 3 Select/Delete/Information button

**Select:** Adds the selected folder to the Shared folder.

**Delete:** Deletes the selected folder from the Shared folder.

**Information:** Shows the property information on the selected folder or file.

### 4 Shared folder

You can check and use the folder added in the Shared folder in the wireless TV.

### 5 File view

You can check the file(s) in the selected folder.

# Viewing the Picture

## At the wireless TV : Viewing the Picture

You can view the images or the pictures in the folder shared by the Media Server. (See page 50 – Sharing files in the Media Server)



- 1 **Moving up** Select the icon using the movement buttons on the remote control to move to the upper folder.
- 2 **Preview** You can preview the pictures in the folder. The image will appear if the picture does not contain the preview information.
- 3 **Page Up /Down** You can move up/down the list by page using the **CH/PAGE** button on the remote control.
- 4 **Arrange List** You can arrange the name of the folder or picture files by ascending/descending order using the **EZ VIDEO** button on the remote control.
- 5 **Back to 'Home Media'** You can move to the home screen using the **HOME** button on the remote control.

Viewings the images in the folder  
Supported format



### Viewing the picture

- 1 Select the image to view using the movement buttons on the remote control.  
Selection button:
- 2 Press the **STOP** button or **EXIT** button to move back to the picture list.

Movement buttons

### Viewing the picture while listening to the music

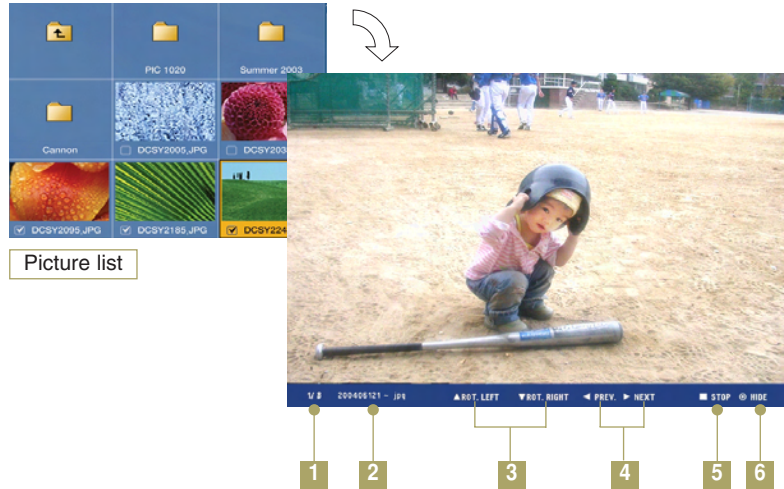
- 1 Play back the music file.  
(See page 53.)
- 2 Move to the **'Picture'** menu and view the picture after returning to the **'Home Media'** screen.  
(You can adjust the sound volume at any menu – **'Music'** menu, **'Home Media'** or **'Picture'** menu, using the **VOL** button.)
- 3 To stop music playback, return to the **'Home Media'** and move to the **'Music'** menu.  
Press the **STOP** button to stop music playback.










### Note


File arrangement will be disabled during music playback.

# Viewing Pictures




- 1 **View page** You can display current page as well as all pages. (Current page/All pages)
- 2 **View file name** You can check the file name of the picture.
- 3 **Rotate** You can rotate the selected picture for viewing.
  -  button on the remote control: Shows the previous picture.
  -  button on the remote control: Shows the next picture.
- 4 **View previous / next picture** You can display the picture previous/next to the current picture.
  -  Remote Control button: Displays the picture previous to the currently selected picture.
  -  Remote Control button: Displays the picture next to the currently selected picture.
- 5 **Stop** Use  **STOP** or  **EXIT** button to return to the View Picture List screen.
- 6 **Hide** Hides the status bar at the bottom. Select the  button repetitively to show the status bar again.


## Viewing the slide show

- 1 Select the image to view using the  **MARK** button.


\* To select consecutive files at a time.



 Click at the beginning of the selected pictures!

 Click at the end of the selected pictures!

Selection button:  Selection cancel button: 

- 2 Press the Start Slide Show  button.

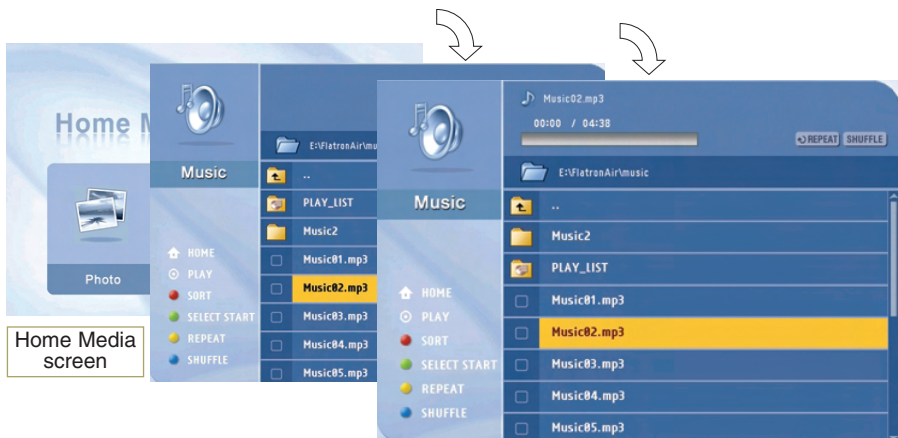
\* If you press this button when no picture is selected, all files will be included in a slide show.

- 3 The selected files will be displayed as a slide show with the preset speed. (Use the Setting menu to change slide show speed! See page 58.)
- 4 Press the  **STOP** or  **EXIT** button to stop playing a slide show.
  - \* If you don't press the **STOP** button, the slide show will continue repeatedly.

# Playing Music

## At the wireless TV : Playing music





You can play back the music files in the folder shared by the Media Server. (See page 50 – Sharing files in the Media Server)



Home Media screen



Playing back the music files in the folder

Supported format : MPEG1 Layer I, II, III (\*.mpa, \*.mp3)

- Moving up** Select the  icon using the movement buttons on the remote control to move to the upper folder.
- Page Up /Down** You can move up/down the list by page using the  CH/PAGE button on the remote control.
- Arrange List** You can arrange the name of the folder or picture files by ascending/descending order using the  EZ VIDEO button on the remote control.
- Back to 'Home Media'** You can move to the home screen using the  HOME button on the remote control.

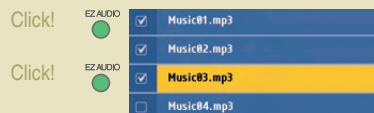




### Playing music

Select the music file to play back and press the  button or  **PLAY** button.


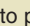
\* Use the  MARK button to select multiple files.

\* Selecting several consecutive files at a time:



Selection button:  Selection cancel button: 

### Playing back previous/next music file


Press the  button to play back the previous music file, or the  button to play back the next one.




\* The title color will be changed to light blue.



### Note

File arrangement and  MARK button will be disabled during music playback.

If you press the  HOME button during playback, the selected music file will be played back instead.

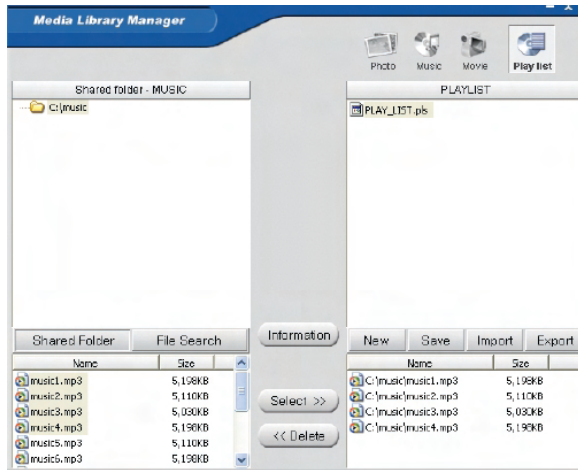
You cannot move from the Home screen to the Setting screen during music playback.

# Playing Music

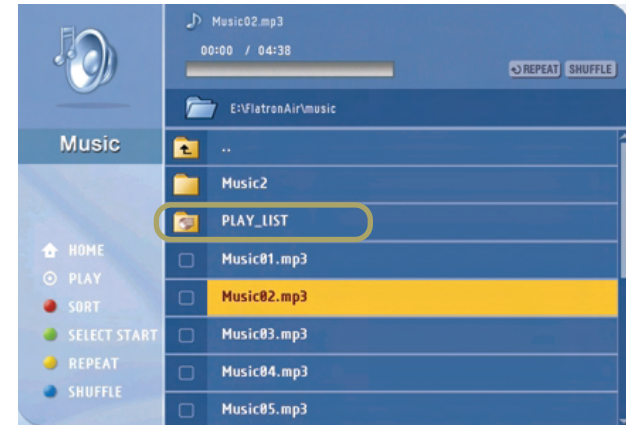
## Playing music using a playlist

You can create a playlist that contains your favorite music and use it on the wireless TV. (See next page)


### At your computer





### At the wireless TV





### Stop/Pause

**STOP:** Press the  **STOP** button to stop playback of the current music file.

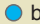
**PAUSE:** Press the  **PAUSE** button to temporarily stop music playback. To resume playback, press the  **PLAY** button.


### Repeat/Clear

Press the  **AUDIO** button to play back several music files in the playlist or selected file repetitively.

 **REPEAT** For repeated playback

### Random/Clear

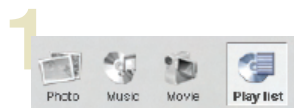
Press the  button to play back the music files randomly.

 **SHUFFLE** For random playback

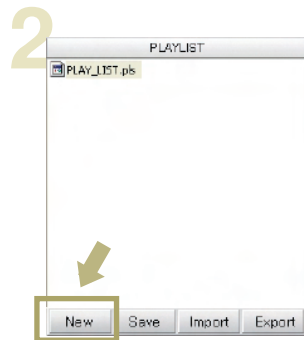
# Playing music

## At computer : Creating a playlist

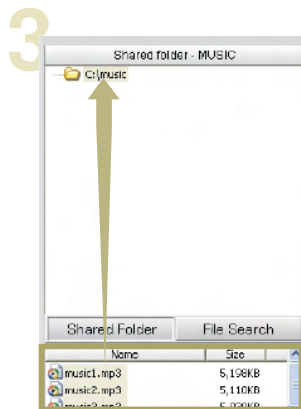
You can create a playlist that contains your favorite music and use it on the wireless TV. (See next page)



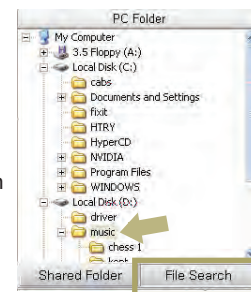
Select the Playlist icon.



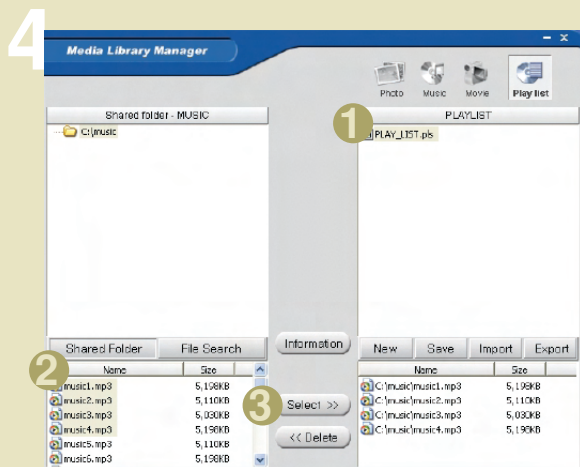
Click the New button in the Playlist window. A new playlist will be created.



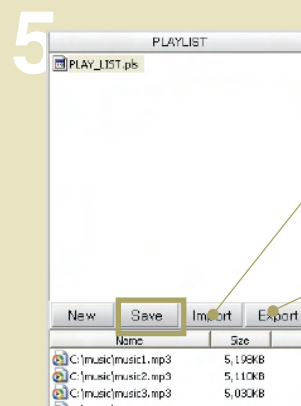
Select a folder in the Shared folder. Then, the music file list will be displayed at the bottom section. (No folder will appear if no folder is shared in the Music menu.)



If the folder is not shared, click the File Search button and select the folder to share.  
\* You can add the music files in the Shared folder only to the playlist.



1. Select a 'PLAYLIST'.
2. Select the music file to play back.
3. Click the 'Select' button.



**Import**  
You can add the contents of the selected playlist to the currently edited playlist.

**Export**  
You can save the selected list in a playlist as a different file name.

The music file is added to the playlist.

Click the 'Save' button to save it.

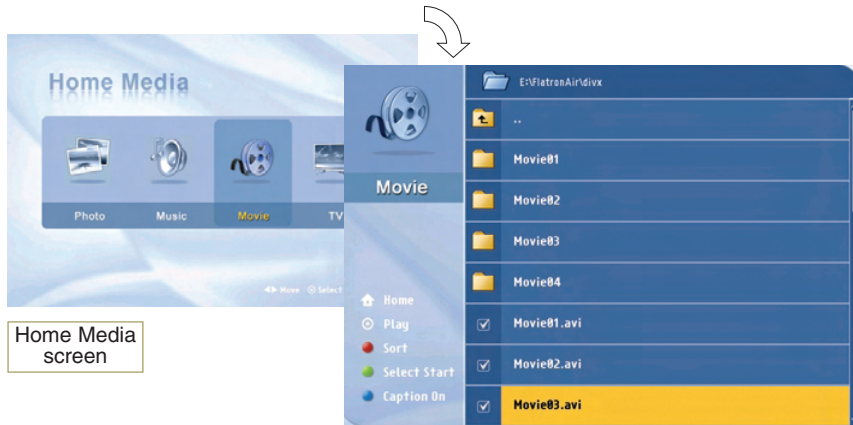
(The file will be saved in My Computer -> C: -> Program Files -> LG Media Library -> Playlist by default.)



# Watching the movie

## At the wireless TV : Watching the movie

You can play back the video files in the folder shared by the Media Server. (See page 50 – Sharing files in the Media Server)




Home Media screen

View movie list


Supported format: MPEG-1 VCD, MPEG-2 (SD class), WMV9 (SD class), AVI.

\* For more details, see the next page.


### 1 Moving up

Select the  icon using the movement buttons on the remote control to move to the upper folder.

### 2 Page Up/Down

You can move up/down the list by page using the  CH/PAGE button on the remote control.

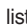

### 3 Arrange List

You can arrange the name of the folder or movie files by ascending/descending order using the  EZ VIDEO button on the remote control.

### 4 Back to 'Home Media'

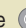

You can move to the home screen using the  HOME button on the remote control.

### 5 Caption setting

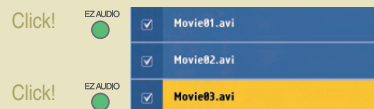
You can change the caption/text setting in the movie list screen using the  button on the remote control. Press the  button on the remote control to hide/show (toggle) the caption/text while playing back the movie file.




### Playing back the movie

- 1 Select the movie file to play back and press the  button or  PLAY button.

\* Use the  MARK button to select multiple files.  
\* Selecting several consecutive files at a time:

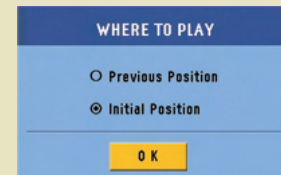


- 2 Press the  STOP button to move to the View Movie List window during playback.

\* When playback is finished, the View Movie List window will be automatically displayed.

\* If you exit to the Home screen and return while playing back the movie file or playback is stopped.

If you select the movie file that was being played, the 'WHERE TO PLAY' window will appear. (Some format does not display this window.)



**Previous Position:** Resumes playback from the interrupted position.

**Initial Position:** Starts from the beginning.




### Note



It can be terminated when playing the movie or executing FF/REW, depending on the network condition.

# Playing back the movie





- 1 **View file name** You can check the name of the movie file.
- 2 **View file property** You can check the movie file format.
- 3 **Sound amplification** You can amplify the sound by properly adjusting the default value.  
(Press the  **AUDIO** button on the remote control.)  
X1: Default volume, X2: 2 times, X3: 3 times
- 4 **View file playback time** You can check the file playback time and all playback time.

## Playing previous/next movie file

Press the  button to play back the previous movie file, or press the  button to play back the next one.


## Stop/Pause


**STOP:** Press the  **STOP** button to stop playback of the current file.

**PAUSE:** Press the  **PAUSE** button to temporarily stop playback. To resume playback, press the **PLAY** button.

## FF/REWIND (Not available for some formats)

Moves the playback position of the current movie file forward or backward by certain interval.

**FF** : Moves forward as much as 2% of the entire file playback length (based on 1 hour).

**REWIND** : Moves backward as much as 2% of the entire file playback length (based on 1 hour).

\* Movement position can differ according to the file size.



## Note

The wireless TV supports the following movie file formats.

- **MPEG-1 VCD** (\*.mpg, \*.mpe, \*.mpeg, \*.dat, \*.m1v)
- **MPEG-2 (SD class)** (\*.mpg, \*.mpe, \*.mpeg, \*.vob, \*.m2v)
- **WMV9 (SD class)** (\*.wmv)
- **AVI** (\*.avi)

Audio codec

- MPEG1 Layer I, II, III
- Dolby Digital (AC3)
- DTS
- Windows Media Audio (WMA9)

Video codec

- MPEG-4 (1/2/3)
- Divx 3.11/4/5
- XVID
- WMV9

Supported sub-title file format

- **Sami (\*.smi)**

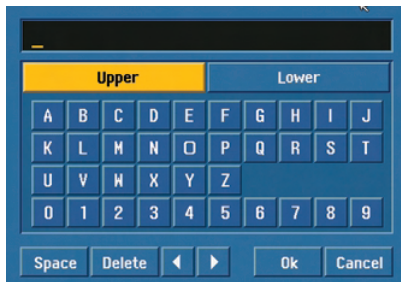
\* The sub-title name must be same as that of the movie file to be displayed the sub-title on the TV.

# Changing the settings

## Changing the settings



5-1



### Virtual keyboard



Input the number or the character you want, using the movement buttons on the remote control.

- 1 **Brightness** Adjusts brightness of the screen. The bigger value makes brighter screen.
- 2 **Slideshow** Adjusts the slide show interval.  
Slow (15 seconds) -> Normal (10 seconds) -> Fast (5 seconds)  
Press the button after setting.
- 3 **Browse From** Selects the screen when the TV/MEDIA button is pressed on the remote control.  
Home Home screen appears when switching from TV to Media Browser  
Last mode: Starts from the initial screen of Home screen, picture, music or movie that you have terminated the Media Browser last, when switching from TV to Media Browser.  
  
Press the button after setting.
- 4 **Select Network** Changes or selects the SSID(network name) of the wireless LAN card (or Access Point(AP)).  
Select the wireless network ID to change using the left/right button on the remote control.
- 5 **WEP key** Encryption for security. Assigns the WEP key (password) for wireless LAN card (or Access Point(AP)) setting.  
Not in Use: WEP key will not be used.  
64bit/128bit: If you apply 64 bits or 128 bits and press the button, the virtual keyboard screen (5-1) will appear and lets you enter the password.
- 6 **Network** Sets the IP Address, Subnet Mask and Gateway so that you can view the picture, or play back music and movie stored in the computer, using the wireless TV.  
**Manual:** You should manually input IP Address, Subnet mask and Gateway value.  
**Automatic:** IP Address, Subnet mask and Gateway value will be automatically filled in by the DHCP server.  
(Nothing will appear on the Setting window.)
- 7 **Select Media Server** Specify the computer that contains the media files to use.  
When the Setting Confirmation window appear after setting, press the button.

\* If you press the HOME button on the remote control when changing the Select Network, WEP key and Network, the 'SEARCH FAILURE' windows appear if you select Exit from the Setting menu. Press the button again to enter into the Setting menu again.

## Check before reporting malfunction

When suspecting a malfunction, check again if the following occur. It may not necessarily be a malfunction.

	Symptoms	Take the following measures
Abnormal Adjustment	Q Screen appears a little late after turning the wireless TV on.	<ul style="list-style-type: none"> <li>A This phenomenon occurs because of image elimination processing to hide the image noise on the screen when the power is turned on. It is not a malfunction.</li> <li>A The screen may appear a little late depending on the network status.</li> </ul>
	Q Screen appears but no sound is heard.	<ul style="list-style-type: none"> <li>A Check the program of other broadcasting service provider.</li> <li>A Press the  Volume Up button among Volume Up/Down button.</li> </ul>
	Q Remote control does not work.	<ul style="list-style-type: none"> <li>A Check whether there is any obstacle between remote control and wireless TV.</li> <li>A Check whether the battery is inserted with correct polarity.</li> <li>A The battery can be used up. Replace two batteries with new one. (Page 18)</li> </ul>
	Q Vertical and horizontal lines as well as net pattern appear on the screen instantly, and the screen shakes.	<ul style="list-style-type: none"> <li>A Stop using the cordless phone, hair dryer or electric drilling machine since it can be caused by strong electromagnetic interference from a high-frequency electric device or other TV.</li> </ul>
	Q Screen of all channels or the specific channel is overlapped or the line	<ul style="list-style-type: none"> <li>A Adjust the direction. i.e., Re-orient the antenna to the broadcasting station.</li> </ul>
	Q Color set all channels or the specific channel is not displayed.	<ul style="list-style-type: none"> <li>A Check the program of other broadcasting service provider.</li> <li>A Select the color and adjust it using the  Volume Up button. (Page 30)</li> </ul>
	Q A strange sound is heard from the wireless TV.	<ul style="list-style-type: none"> <li>A "Snapping sound" before and after watching TV originates from surrounding environment change because of the characteristics of the plastic products. It is not a malfunction.</li> </ul>

# Check before reporting malfunction


When suspecting a malfunction, check again if the following occur. It may not necessarily be a malfunction.

	Symptoms	Take the following measures
<b>Abnormal Adjustment</b>	<p>Q Nothing appears on the screen.</p>	<p>A Check whether the battery or the DC adaptor is connected.</p> <p>A If you find that the battery power LED flashes in yellow color when you press the power button, the remaining battery amount is insufficient. Connect the DC adaptor in this case.</p>
	<p>Q No sound is heard.</p>	<p>A Adjust the volume.</p> <p>A Check whether the 'Mute' function is set in the Volume setting menu.</p> <p>A If no sound is heard from the headset, check whether the headset jack is properly connected to the wireless TV.</p> <p>A If the headset is equipped with the volume control function, sound balance setting in the wireless TV may not work properly.</p> <p>A When listening to the music from the wireless TV through the computer, music playback can be interrupted from time to time depending on the wireless network environment.</p>
	<p>Q The screen becomes darker when I separate a DC adapter while the battery is mounted.</p>	<p>A Screen brightness is automatically adjusted for power saving. If the DC adaptor is connected, the previous setting will be restored.</p>
	<p>Q The screen blinks when setting the screen automatically.</p>	<p>A Screen brightness is adjusted twice at the time of automatic screen adjustment. It is not a malfunction.</p>

# Check before reporting malfunction

When suspecting a malfunction, check again if the following occur. It may not necessarily be a malfunction.

## Symptoms

- Q When I use the Media Browser, the “Check the PC status first. If you want to change the settings, press the  button.” message appears.

## Abnormal Adjustment

## Take the following measures

- A Check whether the network setting (SSID(network name), WEP key and so on) is correct in the wireless TV.

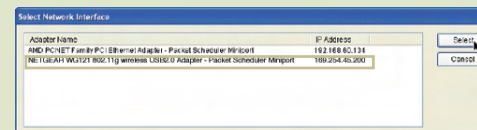
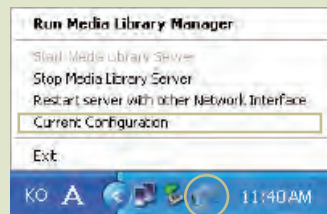


Check whether the SSID(network name) in ‘Select Network’ of the wireless TV setting is identical to that of the computer wireless network. If it is different, set the SSID(network name) of the wireless TV as that of the computer. (See page 43)

The SSID(network name) in ‘Select Network’ of the wireless TV setting is set to LGMEDIA by default. But, it can be changed using the wireless network SSID(network name) set in the computer.

At this time, the wireless LAN card (or, Access Point(AP)) setting in the computer should be ‘Network between Computers’ (Ad-hoc or peer-to-peer). See the wireless LAN card (or, Access Point(AP)) user’s manual.

- A Check whether the computer is turned on.
- A Check whether the program (Media Library) is properly installed in the computer.
- A Check whether the wireless LAN card (or, Access Point (AP)) is installed properly and it can be used.
- A Check whether the distance from wireless TV and computer is too far away.
- A Check whether the Media Library is allocated to the wireless network card (or, Access Point(AP)).



If the wireless LAN card (or, Access Point(AP)) is not allocated, run “Re-start the service with a different IP” and select the network installed with the wireless LAN card (or, Access Point(AP)) and then activate the service.

- A Check whether the ‘Turn off HDD’ option is set on in the power saving mode of the computer.
- A Check the wireless Access Point(AP) setting. If the SSID(network name) is in the hiding mode, it cannot be used.

# Check before reporting malfunction

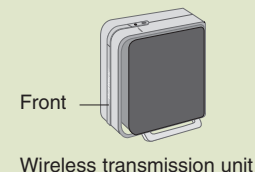
Check again if the following phenomenon occurs, which you presume that it is malfunction. It may not be malfunction indeed.

## Symptoms

- Q TV screen display is interrupted from time to time, or not displayed properly.

## Take the following measures

- A Check whether the power of the transmission unit is turned on.
- A First, check whether the power LED in the transmission unit flashes in red color. Then, move the location of the transmission unit to the center of the house or the position where you watch the TV most frequently.
- A Check whether the distance from wireless TV and computer is too far away.
- A Reception sensitivity differs according to the direction of the wireless TV and wireless transmission unit. Turn the front side of the wireless transmission unit towards the wireless TV.
- A Reception sensitivity of the wireless TV also depends on the direction. Find the optimal direction and location inside the house and install the wireless TV.
- A Do not attach the wireless transmission unit on the bookshelf or the wall to extend the wireless network coverage.
- A If the TV is turned on properly but not the TV broadcasting, check TV antenna connection and set the channel using the **[Ez Scan]** function. (See page 27.)



# Product Specification

The product specification is subject to change without notice for product improvement.

<b>Display Device</b>	15 LCD Panel
<b>Television Standard</b>	NTSC
<b>Receiving Channel</b>	VHF 2~13 channels, UHF 14~69 channels, CATV 01~125 channels
<b>Input Connector</b>	S-Video, Video, TV
<b>Power</b>	Wireless TV: DC 16V 3.0A Wireless Transmission Unit: DC 16V 1.0A
<b>Power Consumption</b>	Wireless TV: 40W Wireless Transmission Unit: 15W
<b>External Antenna Impedance</b>	75Ω
<b>Sound Output</b>	1.5W+1.5W
<b>External Port</b>	See page 23.
<b>Dimension</b>	<p>Size (Width x Length x Height) Weight (excluding package)</p> <ul style="list-style-type: none"> <li>■ Wireless TV (4.0 Kg)           <ul style="list-style-type: none"> <li>454 mm</li> <li>303 mm</li> <li>57 mm</li> </ul> </li> <li>■ Wireless TV (4.0 Kg) + Mounting type stand (1.0 Kg)           <ul style="list-style-type: none"> <li>454 mm</li> <li>380 mm</li> <li>201 mm</li> </ul> </li> <li>■ Wireless Transmission Unit (1.6 Kg)           <ul style="list-style-type: none"> <li>245 mm</li> <li>243 mm</li> <li>56 mm</li> <li>228 mm</li> <li>110 mm</li> </ul> </li> <li>■ Battery: 0.4 Kg</li> </ul>



