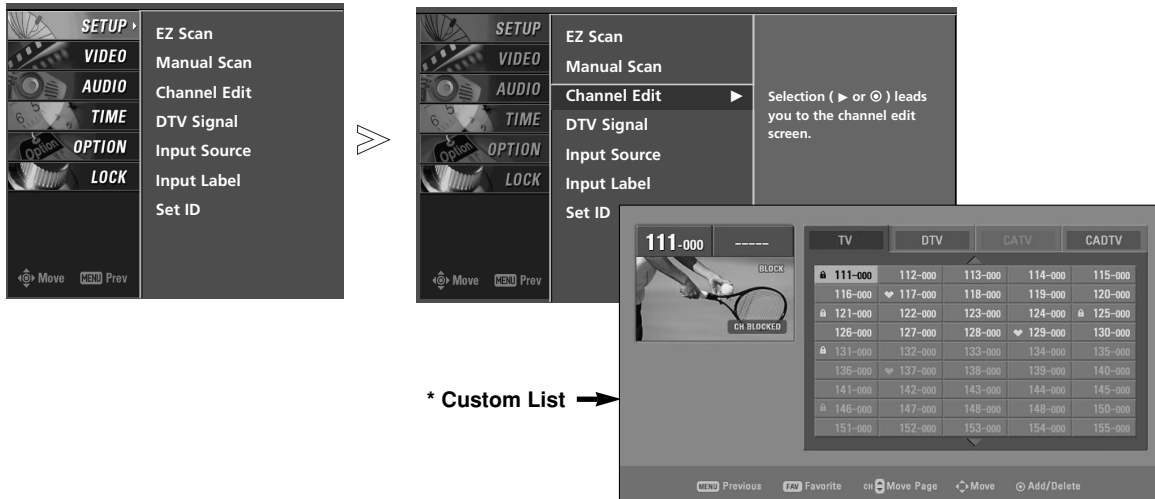


## Channel Edit



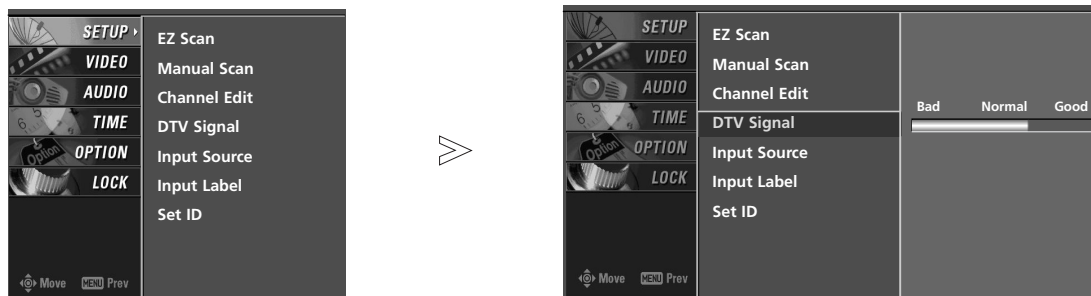
- There are two different ways in order to add or delete scanned channels. One is "Custom List" and the other is "Favorite List" in the channel list. Both of them are available after **EZ Scan** on the **SETUP** menu.

- A Custom List can be created by toggling each channel on or off with **ENTER** button. The channels in the Custom List are displayed in black color, and the channels deleted from the Custom List are displayed in gray color. Once a channel is highlighted you can add or delete the channel by referring to the small window at the top-left corner of the screen. You can create your own Favorite List. Use the **FAV** button on the remote control when a channel is highlighted and then you can add or delete the channel to/from the Favorite List.

- 1** Press the **MENU** button and then use **▲ / ▼** button to select the **SETUP** menu.
- 2** Press the **▶** button and then use **▲ / ▼** button to select **Channel Edit**.
- 3** Press the **▶** button. You will now see a screen filled with channel numbers and a preview picture.
- 4** Use **▲ / ▼ / ◀ / ▶** button to select a channel and then use the **ENTER** button to add or delete it. Press **FAV** button to add the channel to the Favorite List. The heart-mark will appear in front of that channel number.
- 5** Press **EXIT** button to return to TV viewing or press **MENU** button to return to the previous menu.

## Setup Menu Options continued

### DTV Signal Strength



- Shows how strong your DTV signal is and whether you need to adjust your antenna or digital cable input. The higher the signal strength, the less likely you are to experience picture degradation.

- DTV Signals: Only when the input signal is DTV or CADTV, this function is available.

- 1 Press the **MENU** button and then use **▲ / ▼** button to select the **SETUP** menu.
- 2 Press the **▶** button and then use **▲ / ▼** button to select **DTV Signal**.
- 3 View the on-screen signal strength monitor to see the quality of the signal being received.
- 4 Press **EXIT** button to return to TV viewing or press **MENU** button to return to the previous menu.

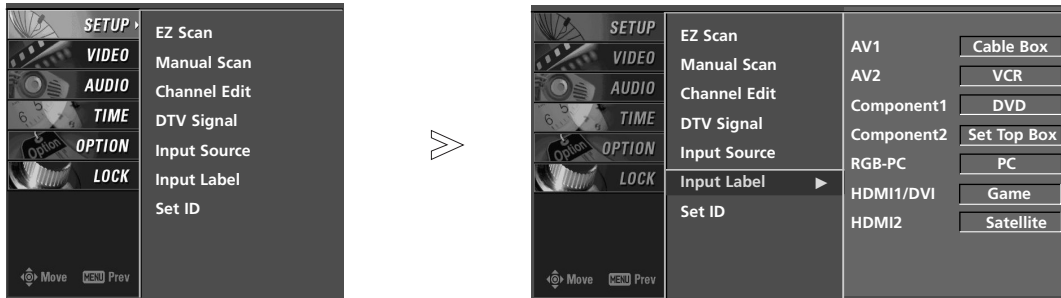
### Input Source



- Changes the picture source so you can watch your TV, cable TV, VCR, DVD, or any other devices that are connected to your TV.

- 1 Press the **MENU** button and then use **▲ / ▼** button to select the **SETUP** menu.
- 2 Press the **▶** button and then use **▲ / ▼** button to select **Input Source**.
- 3 Press the **▶** button and then use **▲ / ▼** button to select the source: TV, AV1, AV2, Component1, Component2, RGB-PC, HDMI1/DVI, or HDMI2.
- 4 Press **EXIT** button to return to TV viewing or press **MENU** button to return to the previous menu.

## Input Label



- Sets a label to each input source or lets you skip the input source which is not in use when you press **INPUT** button.

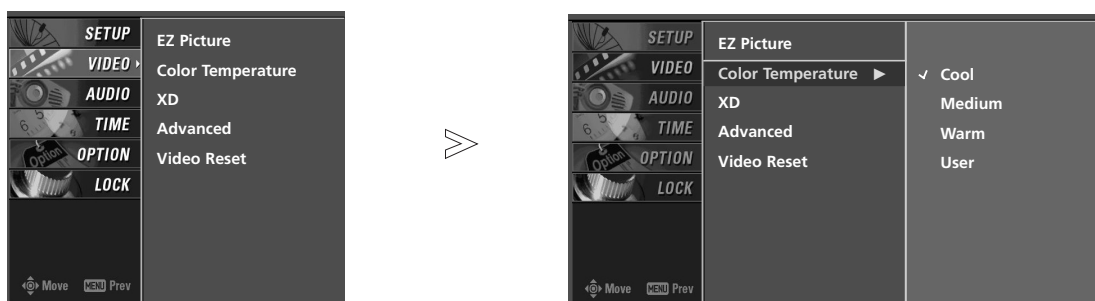
- 1** Press the **MENU** button and then use **▲ / ▼** button to select the **SETUP** menu.
- 2** Press the **▶** button and then use **▲ / ▼** button to select **Input Label**.
- 3** Press the **▶** button and then use **▲ / ▼** button to select the source: AV1-2, Component1-2, RGB-PC, HDMI1/DVI or HDMI2.
- 4** Press the **◀ / ▶** button to select the label.
- 5** Press **EXIT** button to return to TV viewing or press **MENU** button to return to the previous menu.

## Video Menu Options

### Auto Picture Control (EZ Picture)

- EZ Picture adjusts the TV for the best picture appearance. Select the preset value in the EZ Picture menu based on the program category.
  - **Daylight, Normal, Night Time** settings are preset for optimum picture quality at the factory and are not adjustable.
  - In the **User 1**, and **User 2** modes only, user can directly adjust the contrast, brightness, color, sharpness, tint.
- 1** Press the **EZ PIC** button repeatedly to select the picture appearance setup option as shown below:
    - Daylight, Normal, Night Time, User 1** and **User 2**(your own settings).
    - You can also use the **VIDEO** menu to adjust **EZ Picture**.
  - 2** Press the **EXIT** button to save and return to TV viewing .

### Color Temperature Control



- Choose one of three automatic color adjustments. Set to warm to enhance hotter colors such as red, or set to cool to see less intense colors with more blue.
- 1** Press the **MENU** button and then use **▲ / ▼** button to select the **VIDEO** menu.
  - 2** Press the **▶** button and then use **▲ / ▼** button to select **Color Temperature**.
  - 3** Press the **▶** button and then use **▲ / ▼** button to select either **Cool, Medium, Warm, or User**.
  - 4** Press **EXIT** button to return to TV viewing or press **MENU** button to return to the previous menu.

## Manual Color Temperature Control



- You can also adjust the detailed settings (Red, Green, Blue) by selecting the **User** menu.

- 1 Press the **MENU** button and then use **▲** / **▼** button to select the **VIDEO** menu.
- 2 Press the **▶** button and then use **▲** / **▼** button to select **Color Temperature**.
- 3 Press the **▶** button and then use **▲** / **▼** button to select **User**.
- 4 Press the **▶** button and then use **▲** / **▼** button to select **Red**, **Green** or **Blue**.
- 5 Press the **▶** button and then use **◀** / **▶** button to make appropriate adjustments.
  - The adjustment range of **Red**, **Green** or **Blue** is -20~ +20.
- 6 Press **EXIT** button to return to TV viewing or press **MENU** button to return to the previous menu.

## XD



- XD is LG Electronic's unique picture improving technology to display a real HD source through an advanced dig-ital signal processing algorithm.
- When selecting EZ Picture options (Daylight, Normal and Night time), XD is automatically change to Auto.
- When selecting EZ Picture options (User 1 and User 2), you can choose the Auto / Manual and when selecting Manual, you can adjust the XD Contrast, XD color and XD Noise.

- 1 Press the **MENU** button and then use **▲ / ▼** button to select the **VIDEO** menu.
- 2 Press the **▶** button and then use **▲ / ▼** button to select **XD**.
- 3 Press the **▶** button and then use **▲ / ▼** button to select **Auto** or **Manual**.

**\* Selecting the Manual**

1. Press the **▶** button and then use **◀ / ▶** button to select **XD Contrast, XD Color** or **XD Noise**.

**XD Contrast** :Optimizing the contrast automatically according to the brightness of the reflection.

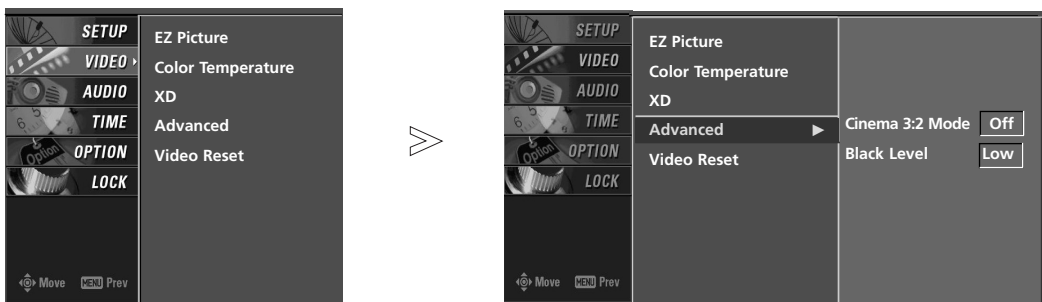
**XD Color** :Adjusting the colors of the reflection automatically to re-pro-duce as closely as possible to the natural colors.

**XD Noise** :Removing the noise up to the point where it does not damage the original picture.

2. Use the **▲ / ▼** button to make appropriate adjustments.

- 4 Press **EXIT** button to return to TV viewing or press **MENU** button to return to the previous menu.

**Advanced-Cinema 3:2 Mode / Black Level**



• **Cinema 3:2 Mode**

- Set up the TV for the best picture appearance for viewing movies. When you operate Cinema (3:2 Pull-Down Mode or Cinema Correction Mode), the TV will adjust 24 fps video from movies to 30 fps video for display (This function is only available in Analog, AV1, AV2, Component 480i mode.)

• **Black level**

- Adjusting the contrast and the brightness of the screen using the black level of the screen. This feature operates only in HDMI1/DVI, HDMI2 or AV1, AV2 mode.

- 1 Press the **MENU** button and then use **▲ / ▼** button to select the **VIDEO** menu.
- 2 Press the **▶** button and then use **▲ / ▼** button to select **Advanced**.
- 3 Press the **▶** button and then use **▲ / ▼** button to select **Cinema 3:2 Mode** or **Black Level**.

<p><b>* Selecting the Cinema 3:2 Mode</b></p> <p>4 Press the <b>▶</b> button and then use <b>▲ / ▼</b> button to select <b>On</b> or <b>Off</b>.</p>	<p><b>* Selecting the Black Level</b></p> <p>Press the <b>▶</b> button and then use <b>▲ / ▼</b> button to select <b>Low</b> or <b>High</b>.</p> <p><b>Low</b> The reflection of the screen gets darker.</p> <p><b>High</b> The reflection of the screen gets brighter.</p>
--	---

- 5 Press **EXIT** button to return to TV viewing or press **MENU** button to return to the previous menu.

## Video Reset



- Use to quickly reset all the Video menu options to their original factory preset values.

- 1** Press the **MENU** button and then use **▲ / ▼** button to select the **VIDEO** menu.
- 2** Press the **▶** button and then use **▲ / ▼** button to select **Video Reset**.
- 3** Press the **▶** button to reset the Video menu options to original values.



# Audio Menu Options

## Audio Language



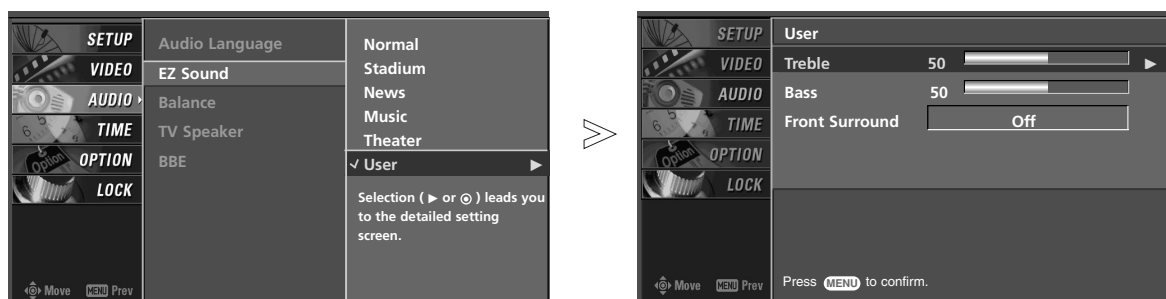
- Other languages may be available if a digital signal is provided by the broadcasting station.

- 1** Press the **MENU** button and then use **▲ / ▼** button to select the **AUDIO** menu.
- 2** Press the **▶** button and then use **▲ / ▼** button to select **Audio Language**.
- 3** Press the **▶** button and then use **▲ / ▼** button to select: English, Spanish, or French.
- 4** Press **EXIT** button to return to TV viewing or press **MENU** button to return to the previous menu.

### Auto Sound Control (EZ Sound)

- EZ Sound lets you enjoy the best sound without any special adjustment because the TV sets the appropriate sound options based on the program content.
  - Normal, Stadium, News, Music and Theater are preset for good sound quality at the factory and are not adjustable.
- 1** Press the **EZ SOUND** button repeatedly to select the appropriate sound setup as shown below :  
**Normal, Stadium, News, Music, Theater** and **User** (your own settings) .
    - You can also adjust **EZ Sound** in the **AUDIO** menu.
  - 2** Press EXIT button to save and return to TV viewing.

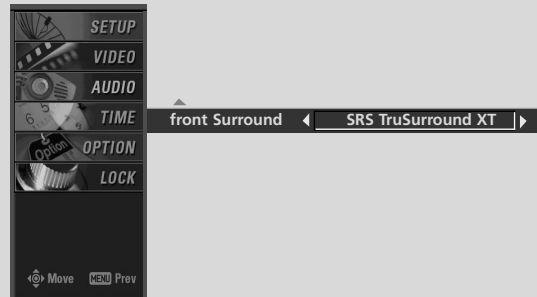
### Manual Sound Control (EZ Sound-User option)



- Adjust the sound in your preference and surrounded environment.
- 1** Press the **MENU** button and then use **▲ / ▼** button to select the **AUDIO** menu.
  - 2** Press the **▶** button and then use **▲ / ▼** button to select **EZ Sound**.
  - 3** Press the **▶** button and then use **▲ / ▼** button to select **User**.
  - 4** Press the **▶** button and then use **▲ / ▼** button to select the desired sound option (**Treble**, **Bass** or **Front Surround**).
  - 5** Press the **▶** button and then use **◀ / ▶** button to make appropriate adjustments.

**\* Selecting the Front Surround**

Press the ► button and then use ◀ / ▶ button to select **Off** or **SRS** (Sound Retrieval System) **TruSurround XT** .



**Note:** When **SRS** (Sound Retrieval System) **TruSurround XT** is selected, Audio Balance function is disable and set to 0 .

When **Off** is selected, Audio Balance function is enable and reset the balance as previous.

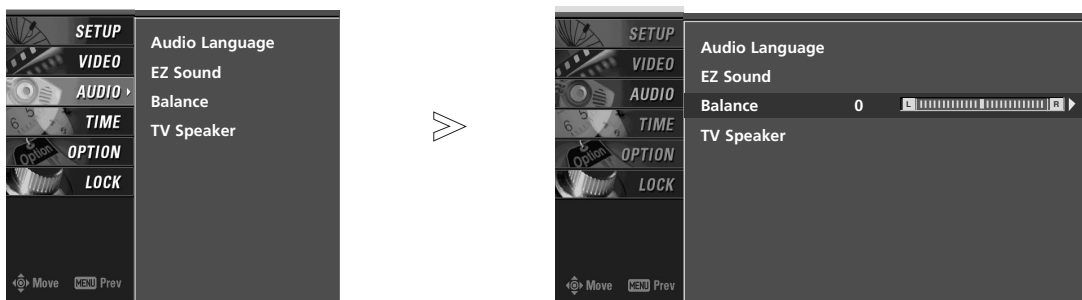
- 6** Press **EXIT** button to return to TV viewing or press **MENU** button to return to the previous menu.

**SRS TruSurround XT**

Takes advantage of any multi-channel format without needing to add extra speakers or equipment. Dialog clarity, bass enrichment, and the addition of stereo audio enhancement produces an immersive sound experience from standard stereo material.

## Balance

- Adjust the sound in your preference and surrounded environment.

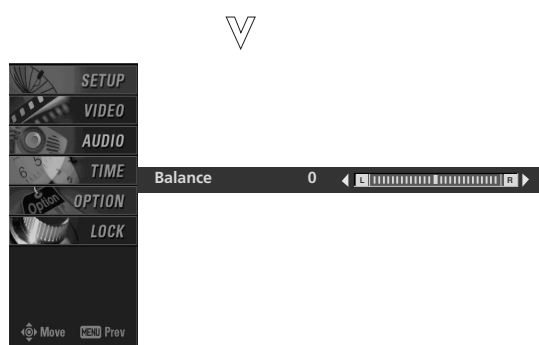


**1** Press the **MENU** button and then use **▲ / ▼** button to select the **AUDIO** menu.

**2** Press the **▶** button and then use **▲ / ▼** button to select **Balance**.

**3** Press the **▶** button and then use **◀ / ▶** button to make appropriate adjustments.

**4** Press **EXIT** button to return to TV viewing or press **MENU** button to return to the previous menu.



## TV Speakers On/Off Setup



- Turn TV speakers off if using external audio equipment. Feature turns the TV Speakers option On or Off.

**1** Press the **MENU** button and then use **▲ / ▼** button to select the **AUDIO** menu.

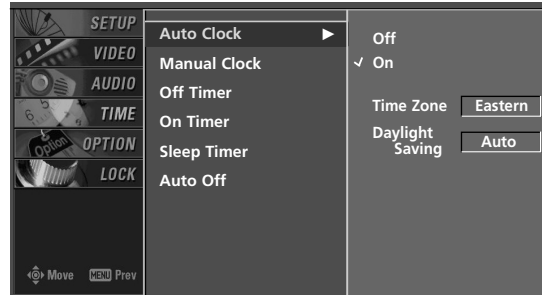
**2** Press the **▶** button and then use **▲ / ▼** button to select **TV Speaker**.

**3** Press the **▶** button and then use **▲ / ▼** button to select **Off** or **On**.

**4** Press **EXIT** button to return to TV viewing or press **MENU** button to return to the previous menu.

# Time Menu Options

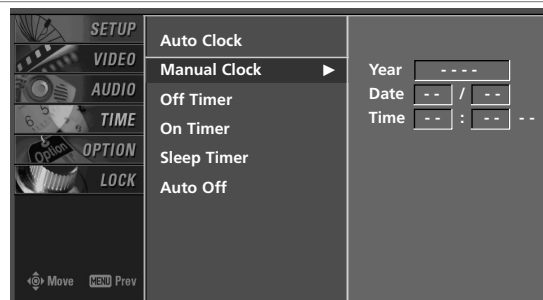
## Auto Clock Setup



- The current time will be set automatically from a digital channel signal provided by the broadcasting station.
- Set the clock manually, if the current time is set incorrectly by the auto clock function.

- 1 Press the **MENU** button and then use **▲** / **▼** button to select the **TIME** menu.
- 2 Press the **▶** button and then use **▲** / **▼** button to select **Auto Clock**.
- 3 Press the **▶** button and then use **▲** / **▼** button to select **On**.
- 4 Press the **▶** button and then use **▲** / **▼** button to select your viewing area time zone.
  - U.S.A: **Eastern, Central, Mountain, Pacific, Alaska, or Hawaii.**
  - Canada: **Eastern, Central, Mountain, Pacific, New Fland, or Atlantic.**
- 5 Press the **▶** button and then use **▲** / **▼** button to select **Auto, Off, On**, depending on whether or not your viewing area observes Daylight Saving time.
- 6 Press **EXIT** button to return to TV viewing or press **MENU** button to return to the previous menu.

## Manual Clock Setup



- If current time setting is wrong, reset the clock manually.

- 1 Press the **MENU** button and then use **▲** / **▼** button to select the **TIME** menu.
- 2 Press the **▶** button and then use **▲** / **▼** button to select **Manual Clock**.
- 3 Press the **▶** button and then use **◀** / **▶** button to select either the year, date, or time option. Once selected, use the **▲** / **▼** button to set the year, date, and time options.
- 4 Press **EXIT** button to return to TV viewing or press **MENU** button to return to the previous menu.

## On/Off Timer Setup



- Timer function operates only if current time has been set.
- Off-Timer function overrides On-Timer function if they are set both set to the same time.
- The TV must be in standby mode for the On-Timer to work.
- If you do not press any button within 2 hours after the TV turns on with the On Timer function, the TV will automatically revert to standby mode.

- 1 Press the **MENU** button and then use **▲** / **▼** button to select the **TIME** menu.
- 2 Press the **▶** button and then use **▲** / **▼** button to select **Off Timer** or **On Timer**.
- 3 Press the **▶** button and then use **▲** / **▼** button to select **On**.
  - To cancel **On/Off TIMER** function, select **Off**.
- 4 Press the **▶** button and then use **▲** / **▼** button to set the hour.
- 5 Press the **▶** button and then use **▲** / **▼** button to set the minutes.
- 6 **For only On Timer function**  
 Press the **▶** button and then use **▲** / **▼** button to select the channel at turn-on.  
 Press the **▶** button and then use **▲** / **▼** button to set the sound level at turn-on.
- 7 Press **EXIT** button to return to TV viewing or press **MENU** button to return to the previous menu.

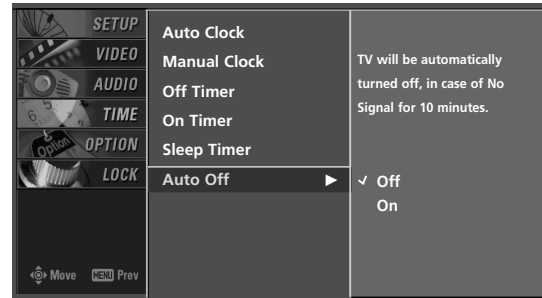
## Sleep Timer

- The Sleep Timer turns the TV off at the preset time. Note that this setting is cleared when the TV is turned off.
- You can also set up the **Sleep Timer** in the **TIME** menu.

- 1 Press the **TIMER** button repeatedly to select the number of minutes. First the **Off** option appears on the screen, followed by the following sleep timer options: 10, 20, 30, 60, 90, 120, 180, and 240 minutes.
- 2 When the number of minutes you want is displayed on the screen, press the **TIMER** button. The timer begins to count down from the number of minutes selected.
- 3 To check the remaining minutes before the TV turns off, press the **TIMER** button once.
- 4 To cancel the Sleep Timer, press the **TIMER** button repeatedly to select **Off**.

## Time Menu Options continued

### Auto Off



- If the TV is on and there is no input signal, the TV turns off automatically after 10 minutes.

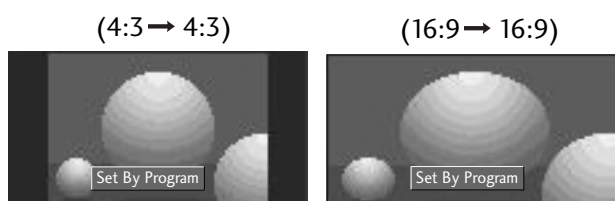
- 1** Press the **MENU** button and then use **▲ / ▼** button to select the **TIME** menu.
- 2** Press the **▶** button and then use **▲ / ▼** button to select **Auto Off**.
- 3** Press the **▶** button and then use **▲ / ▼** button to select **Off** or **On**.
- 4** Press **EXIT** button to return to TV viewing or press **MENU** button to return to the previous menu.

# Option Menu Features

## Aspect Ratio Control

### Set by program

Selects the proper picture proportion to match the source's image.



### 4:3

Choose 4:3 when you want to view a picture with an original 4:3 aspect ratio.



### 16:9

Adjust the picture horizontally, in a linear proportion to fill the entire screen.



- This feature allow an analog picture with 4:3 aspect ratio to be displayed in a different proportion. When 4:3 analog signal is received on the 16:9 TV, personally preferred aspect ratio needs to be specified.
- RGB-PC/DVI-PC input source use 4:3 or 16:9 aspect ratio.

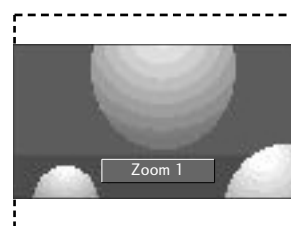
### Horizon

The screen size is, more enlarged at both sides, to create a spectacular view.



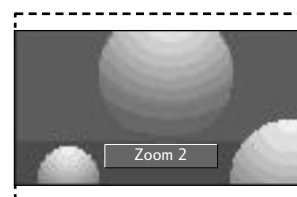
### Zoom 1

Choose Zoom 1 when you want to view the picture without any alteration. However, the top and bottom portions of the picture will be cropped.



### Zoom 2

Choose Zoom 2 when you want the picture to be altered, both vertically extended and cropped. The picture taking a halfway trade off between alteration and screen coverage.



**1** Press the **RATIO** button repeatedly to select the desired picture format.

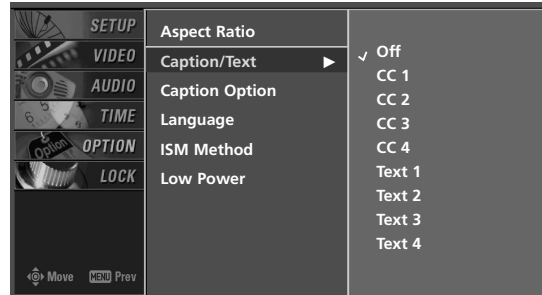
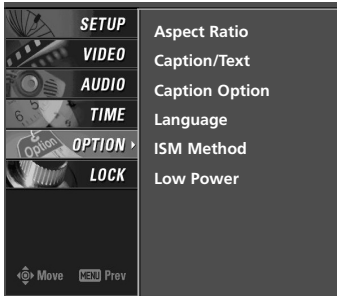
- You can also adjust the **Aspect Ratio** in the **OPTION** menu.



## Option Menu Features continued

### Caption/Text

#### \* Analog Broadcasting System Captions

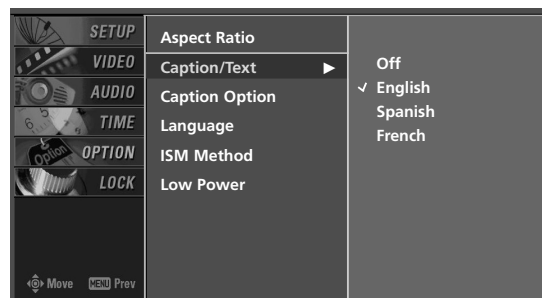
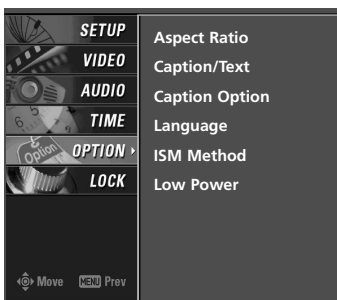


- Select a caption mode for displaying captioning information if provided on a program.
- Analog caption displays information at any position on the screen.
- Text displays information, usually at the bottom position and is used for a data service.
- Caption/Text, if provided by the broadcaster, would be available for both digital and analog channels on the Antenna/Cable.
- This TV is programmed to remember the caption/text mode it was last set to, when you turn the power off.
- When you select the **CC1-Text4**, Caption Option must be disabled.

- 1 Use the **CC** button repeatedly to select Caption **Off**, **CC1**, **CC2**, **CC3**, **CC4**, **Text1**, **Text2**, **Text3**, or **Text4**.
- 2 Press **EXIT** button to save and return to TV viewing.

- 1 Press the **MENU** button and then use **▲ / ▼** button to select the **OPTION** menu.
- 2 Press the **▶** button and then use **▲ / ▼** button to select **Caption/Text**.
- 3 Press the **▶** button and then use **▲ / ▼** button to select caption: **CC1**, **CC2**, **CC3**, **CC4**, **Text1**, **Text2**, **Text3**, or **Text4**.
  - **CAPTION**  
The term for the words that scroll across the bottom of the TV screen.
  - **TEXT**  
The term for the words that appear in a large black frame and almost cover the entire screen; usually messages provided by the broadcaster.
- 4 Press **EXIT** button to return to TV viewing or press **MENU** button to return to the previous menu.

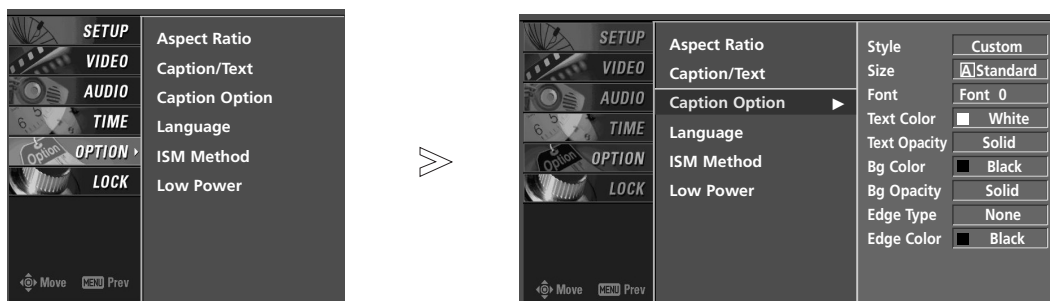
#### \* Digital Broadcasting System Captions



- Choose the language you want the DTV/CADTV Captions to appear in.
- Other languages can be chosen for digital sources only if they are included on the program.
- Caption may not be available depends if the service is not provided by the digital broadcaster.

- 1 Press the **MENU** button and then use **▲ / ▼** button to select the **OPTION** menu.
- 2 Press the **▶** button and then use **▲ / ▼** button to select **Caption/Text**.
- 3 Press the **▶** button and then use **▲ / ▼** button to select available caption languages: **English**, **Spanish**, or **French**.
- 4 Press **EXIT** button to return to TV viewing or press **MENU** button to return to the previous menu.

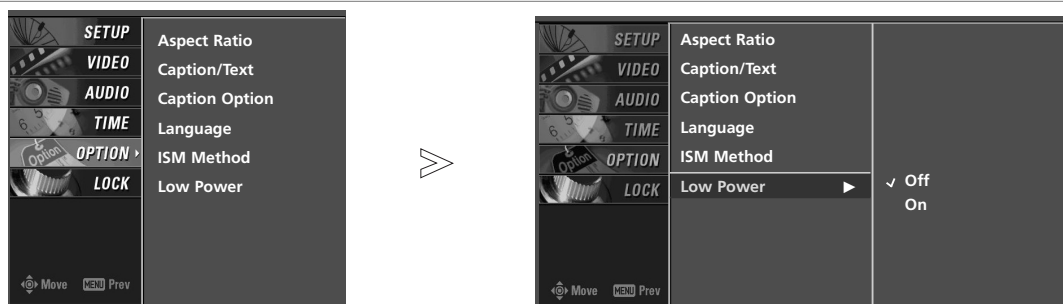
## Caption Option



- Customize the DTV/CADTV captions that appear on your screen.

- 1 Press the **MENU** button and then use **▲** / **▼** button to select the **OPTION** menu.
- 2 Press the **▶** button and then use **▲** / **▼** button to select **Caption Option**.
- 3 Press the **▶** button and then use **◀** / **▶** button to select **Custom**.
- 4 Use **▲** / **▼** button to customize the Style, Font, etc., to your preference. A preview icon is provided at the bottom of the screen, use it to see the caption language.
  - **Size**: Set the size the words will appear in.
  - **Font**: Select a typeface for the words.
  - **Text Color**: Choose a color for the text.
  - **Text Opacity**: Specify the opacity for the text color.
  - **Bg (Background) Color**: Select a background color.
  - **Bg (Background) Opacity**: Select the opacity for the background color.
  - **Edge Type**: Select an edge type.
  - **Edge Color**: Select a color for the edges.
- 5 Press **EXIT** button to return to TV viewing or press **MENU** button to return to the previous menu.

## Low Power (50PC3DU / 60PC1D only)

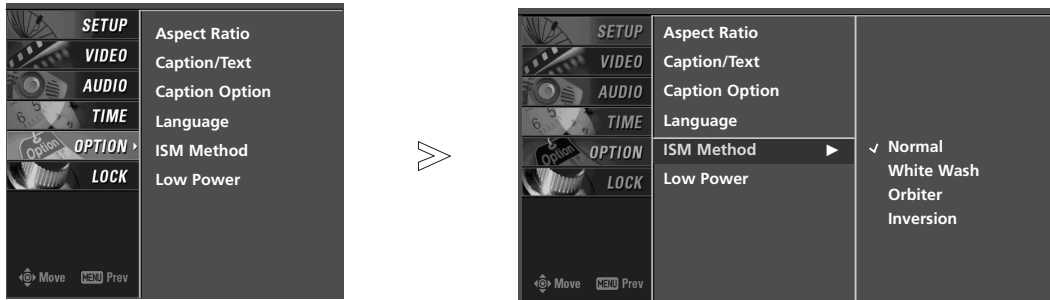


- Low power reduces the power consumption of plasma display.

- 1 Press the **MENU** button and then use **▲** / **▼** button to select the **OPTION** menu.
- 2 Press the **▶** button and then use **▲** / **▼** button to select **Low Power**.
- 3 Press the **▶** button and then use **▲** / **▼** button **On** or **Off**.
- 4 Press **EXIT** button to return to TV viewing or press **MENU** button to return to the previous menu.

## Option Menu Features continued

### ISM (Image Sticking Minimization) Method (50PC3DU / 60PC1D only)



- A frozen still picture from a PC/video game displayed on the screen for prolonged periods will result in a ghost image ; even though the image is changed. Use our unique method to minimize any fixed image on the screen.

- 1 Press the **MENU** button and then use ▲ / ▼ button to select the **OPTION** menu.
- 2 Press the ► button and then use ▲ / ▼ button to select **ISM Method**.
- 3 Press the ► button and then use ▲ / ▼ button to select **Normal**, **White Wash**, **Orbiter** or **Inversion**.
  - **Normal**  
If image sticking is never a problem, ISM is not necessary - set to Normal.
  - **White Wash**  
White Wash removes permanent images from the screen.  
*Note: An excessive permanent image may be impossible to clear entirely with White Wash. To return to normal viewing, press the any button.*
  - **Orbiter**  
Orbiter may help prevent ghost images. However, it is best not to allow any fixed image to remain on the screen. To avoid a permanent image on the screen, the image will move once per 2 minutes: Left → Right → Upside → Downside → Right → Left → Downside → Upside.
  - **Inversion**  
Inversion will automatically invert the plasma display panel color every 30 minutes.
- 4 Press **EXIT** button to return to TV viewing or press **MENU** button to return to the previous menu.

## Lock Menu Options

Parental Control can be used to block specific channels, ratings and other viewing sources.

The Parental Control Function (V-Chip) is used to block program viewing based on the ratings sent by the broadcasting station. The default setting is to allow all programs to be viewed. Viewing can be blocked by the type of program and by the categories chosen to be blocked. It is also possible to block all program viewing for a time period. To use this function, the following must be done :

1. Set ratings and categories to be blocked.
2. Specify a password
3. Enable the lock

### V-Chip rating and categories

Rating guidelines are provided by broadcasting stations. Most television programs and television movies can be blocked by TV Rating and/or Individual Categories. Movies that have been shown at the theaters or direct-to-video movies use the Movie Rating System (MPAA) only.

#### For USA

##### Ratings for Movies previously shown in theaters:

###### Movie Ratings :

- Blocking Off (Permits all programs)
- G (General audience)
- PG (Parental guidance suggested)
- PG-13 (Parents strongly cautioned)
- R (Restricted)
- NC-17 (No one 17 and under admitted)
- X (Adult only)

If you set PG-13 : G and PG movies will be available, PG-13, R, NC-17 and X will be blocked.

##### Ratings for Television programs including made-for-TV movies :

- TV-G (General audience)
- TV-PG (Parental guidance suggested)
- TV-14 (Parents strongly cautioned)
- TV-MA (Mature audience only)
- TV-Y (All children)
- TV-Y7 (Children 7 years and older)

##### TV Rating-Children:

- Age (applies to TV-Y, TV-Y7)
- Fantasy Violence (applies to TV-Y7)

##### TV Rating-General:

- Age (applies to TV-G, TV-PG, TV-14, TV-MA)
- Dialogue- sexual dialogue (applies to TV-PG, TV-14)
- Language- adult language (applies to TV-PG, TV-14, TV-MA)
- Sex- sexual situations (applies to TV-PG, TV-14, TV-MA)
- Violence (applies to TV-PG, TV-14, TV-MA)

##### Input Block

- AV1, 2 (On, Off)
- Component 1, 2 (On, Off)
- RGB-PC, HDMI1/DVI and HDMI2 (On, Off)

#### For Canada

##### TV Rating-English:

- E (Exempt)
- C (Children)
- C8+ (8 years and up)
- G (General programming. Suitable for all audiences)
- PG (Parental guidance suggested)
- 14+ (Viewers 14 years and up)
- 18+ (Adult programming)
- Blocking off (Permits all programming)

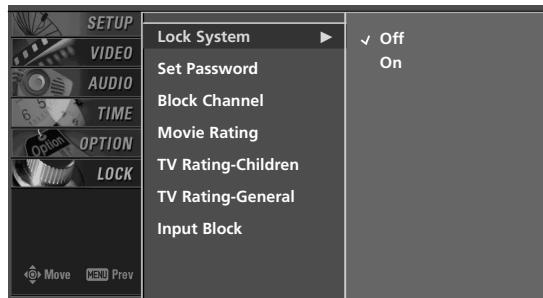
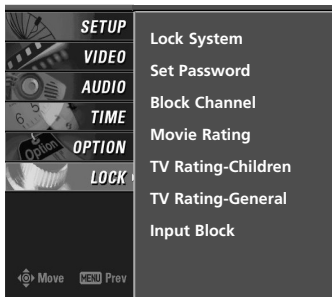
##### TV Rating-French:

- E (Exempt)
- G (General)
- 8 ans+ (8 years and up)
- 13 ans+ (13 years and up)
- 16 ans+ (16 years and up)
- 18 ans+ (Adults only)
- Blocking off (Permits all programming)

##### Input Block

- AV 1, 2 (On, Off)
- Component 1, 2 (On, Off)
- RGB-PC, HDMI1/DVI and HDMI2 (On, Off)

## Parental Lock Setup



- Set up blocking schemes to block specific channels, ratings, and external viewing sources.
- A password is required to gain access to this menu if the Lock System is turned on.

- 1 Press the **MENU** button and then use **▲ / ▼** button to select the **LOCK** menu. Then, press the **▶** button
  - If **Lock** is already set, enter the password as requested.
  - The TV is set up with the initial password "0-0-0-0".
- 2 Use the **▲ / ▼** button to choose from the following Lock Menu options. Once the option is selected, change the settings to your preference.
  - **Lock System:** Activates or disables the blocking scheme you set up previously.
  - **Set Password:** Change the password by inputting a new password twice.
  - **Block Channel:** Select a channel number that you wish to block.
  - **Input block:** Enables you to select a source to block from the external source devices you have hooked up.

### ◆ For USA

- **Movie Rating (MPPA):** Blocks movies according to the movie ratings limits specified, so children cannot view certain movies. You can set the ratings limit by blocking out all the movies with the ratings above a specified level. Keep in mind that the movie ratings limit only applies to movies shown on TV, not TV programs, such as soap operas.
- **TV Rating-Children:** Prevents children from watching certain children's TV programs, according to the ratings limit set. The children rating does not apply to other TV programs. Unless you block certain TV programs intended for mature audiences in the TV Rating - sub menu, your children can view those programs.
- **TV Rating-General:** Based on the ratings, blocks certain TV programs that you and your family do not want to view.

### ◆ For Canada

- **TV Rating-English / TV Rating-French:** Selecting canadian English /French language rating system.

- 3 Press **EXIT** button to return to TV viewing or press **MENU** button to return to the previous menu.

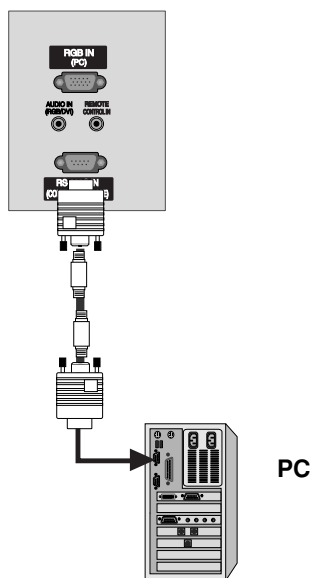


- If you ever forget your password, key in '7', '7', '7', '7' on the remote control. Then, the password reset to '7', '7', '7', '7'.

# External Control Device Setup

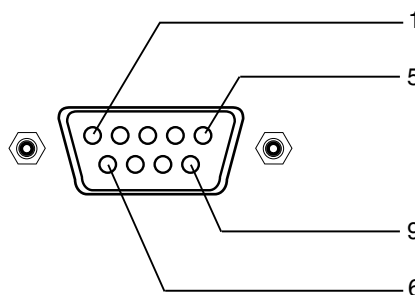
- Connect the RS-232C input jack to an external control device (such as a computer or an A/V control system) and control the Monitor's functions externally.
- Connect the serial port of the control device to the RS-232C jack on the TV back panel.
- RS-232C connection cables are not supplied with the TV.

## RS-232C Setup



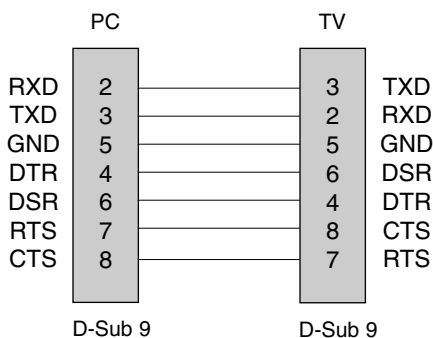
## Type of Connector; D-Sub 9-Pin Male

No.	Pin Name
1	No connection
2	RXD (Receive data)
3	TXD (Transmit data)
4	DTR (DTE side ready)
5	GND
6	DSR (DCE side ready)
7	RTS (Ready to send)
8	CTS (Clear to send)
9	No Connection

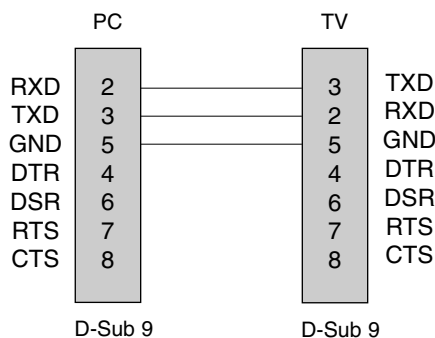


## RS-232C Configurations

### 7-Wire Configurations (Serial female-female NULL modem cable)

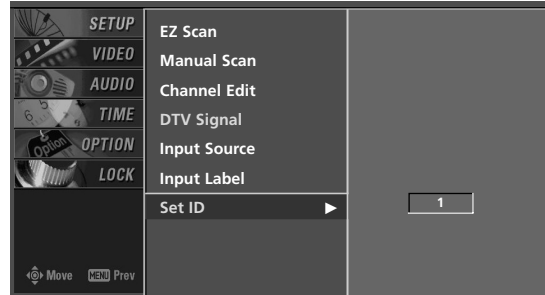


### 3-Wire Configurations (Not standard)



**Set ID**

- Use this function to specify a TV ID number.
  - Refer to 'Real Data Mapping'. See page 55.
1. Press the **MENU** button and then use ▲ / ▼ button to select the **SETUP** menu.
  2. Press the ► button and then use ▲ / ▼ button to select **Set ID**.
  3. Press the ► button and then use ▲ / ▼ button to adjust **Set ID** to choose the desired TV ID number. The adjustment range of **Set ID** is 1 ~ 99.
  4. Press **EXIT** button to return to TV viewing or press **MENU** button to return to the previous menu.



**Communication Parameters**

- Baud rate : 9600 bps (UART)
- Data length : 8 bits
- Parity : None
- Stop bit : 1 bit
- Communication code : ASCII code

\* Use a crossed (reverse) cable.

**Command Reference List**

	COMMAND 1	COMMAND 2	DATA (Hexadecimal)
01. Power	k	a	0 ~ 1
02. Input Select	k	b	* (Refer to p.55)
03. Aspect Ratio	k	c	* (Refer to p.55)
04. Screen Mute	k	d	0 ~ 1
05. Volume Mute	k	e	0 ~ 1
06. Volume Control	k	f	0 ~ 64
07. Contrast	k	g	0 ~ 64
08. Brightness	k	h	0 ~ 64
09. Color	k	i	0 ~ 64
10. Tint	k	j	0 ~ 64
11. Sharpness	k	k	0 ~ 64
12. OSD Select	k	l	0 ~ 1
13. Remote Control Lock Mode	k	m	0 ~ 1
14. Treble	k	r	0 ~ 64
15. Bass	k	s	0 ~ 64
16. Balance	k	t	0 ~ 64
17. Color Temperature	k	u	0 ~ 3
18. ISM Method	j	p	* (Refer to p.57)
19. Low Power	j	q	0 ~ 1

**Transmission / Receiving Protocol**

Transmission

[Command1][Command2][ ][Set ID][ ][Data][Cr]

- \* [Command 1]: First command to control the set. (j,k,m or x)
- \* [Command 2]: Second command to control the set.
- \* [Set ID]: You can adjust the set ID to choose desired monitor ID number in Setup menu. Adjustment range is 1 ~ 99. When selecting Set ID '0', every connected the TV is controlled. Set ID is indicated as decimal (1~99) on menu and as Hexa decimal (0x0~0x63) on transmission/receiving protocol.
- \* [DATA]: To transmit command data.  
Transmit 'FF' data to read status of command.
- \* [Cr]: Carriage Return  
ASCII code '0x0D'
- \* [ ]: ASCII code 'space (0x20)'

OK Acknowledgement

[Command2][ ][Set ID][ ][OK][Data][x]

- \* The Monitor transmits ACK (acknowledgement) based on this format when receiving normal data. At this time, if the data is data read mode, it indicates present status data. If the data is data write mode, it returns the data of the PC computer.

Error Acknowledgement

[Command2][ ][Set ID][ ][NG][Data][x]

- \* The Monitor transmits ACK (acknowledgement) based on this format when receiving abnormal data from non-viable functions or communication errors.

- Data 1: Illegal Code  
 2: Not supported function  
 3: Wait more time

	COM- MAND 1	COM- MAND 2	DATA 0 (Hexadecimal)	DATA 1 (Hexadecimal)	DATA 2 (Hexadecimal)	DATA 3 (Hexadecimal)	DATA 4 (Hexadecimal)	DATA 5 (Hexadecimal)
20. Channel Tuning	m	a	physical/program high	major/program low	major low	minor high	minor low	attribute
21. Channel Add/Del	m	b	00 ~ 01					
22. Key	m	c	key code					
23. Input Select	x	b	* (Refer to p.58)					

**01. Power (Command2:a)**

- ▶ To control Power On/Off of the TV.

Transmission

```
[k][a][ ][Set ID][ ][Data][Cr]
```

Data 0 : Power Off                      1 : Power On

Acknowledgement

```
[a][ ][Set ID][ ][OK][Data][x]
```

\* In a like manner, if other functions transmit 'FF' data based on this format, Acknowledgement data feedback presents status about each function.

**02. Input Select (Command2:b) (Main Picture Input)**

- ▶ To select input source for the TV.

Transmission

```
[k][b][ ][Set ID][ ][Data][Cr]
```

Data 0: DTV	5: Component 2
1: Analog	7: RGB-PC
2: AV1	8: HDMI1/DVI
3: AV2	9: HDMI2
4: Component 1	

```
[b][ ][Set ID][ ][OK][Data][x]
```

Acknowledgement**03. Aspect Ratio (Command2:c) (Main picture format)**

- ▶ To adjust the screen format.  
You can also adjust the screen format using the RATIO button on remote control or in the Option menu.

Transmission

```
[k][c][ ][Set ID][ ][Data][Cr]
```

Date 1: 4:3	4: Zoom 1
2: 16:9	5: Zoom 2
3: Horizon	6: Set by program

Acknowledgement

```
[c][ ][Set ID][ ][OK][Data][x]
```

**04. Screen Mute (Command2:d)**

- ▶ To select screen mute on/off.

Transmission

```
[k][d][ ][Set ID][ ][Data][Cr]
```

Data 0 : Screen mute off (Picture on)  
1 : Screen mute on (Picture off)

Acknowledgement

```
[d][ ][Set ID][ ][OK][Data][x]
```

**05. Volume Mute (Command2:e)**

- ▶ To control volume mute on/off.  
You can also adjust mute using the MUTE button on remote control.

Transmission

```
[k][e][ ][Set ID][ ][Data][Cr]
```

Data 0 : Volume mute off (Volume on)  
1 : Volume mute on (Volume off)

Acknowledgement

```
[e][ ][Set ID][ ][OK][Data][x]
```

**06. Volume Control (Command2:f)**

- ▶ To adjust volume.  
You can also adjust volume with the volume buttons on remote control.

Transmission

```
[k][f][ ][Set ID][ ][Data][Cr]
```

Data Min : 0 ~ Max : 64

- Refer to 'Real data mapping' as shown below.

Acknowledgement

```
[f][ ][Set ID][ ][OK][Data][x]
```

**07. Contrast (Command2:g)**

- ▶ To adjust screen contrast.  
You can also adjust contrast in the Video menu.

Transmission

```
[k][g][ ][Set ID][ ][Data][Cr]
```

Data Min : 0 ~ Max : 64

- Refer to 'Real data mapping' as shown below.

Acknowledgement

```
[g][ ][Set ID][ ][OK][Data][x]
```

**08. Brightness (Command2:h)**

- ▶ To adjust screen brightness.  
You can also adjust brightness in the Video menu.

Transmission

```
[k][h][ ][Set ID][ ][Data][Cr]
```

Data Min : 0 ~ Max : 64

- Refer to 'Real data mapping' as shown below.

Acknowledgement

```
[h][ ][Set ID][ ][OK][Data][x]
```

## \* Real data mapping

```
0 : Step 0
...
A : Step 10 (SET ID 10)
...
F : Step 15 (SET ID 15)
10 : Step 16 (SET ID 16)
...
63 : Step 99 (SET ID 99)
64 : Step 100
```

\* Tint : R50 ~ G50

\* Balance : L50 ~ R50



**09. Color (Command2:i)**

- ▶ To adjust the screen color.  
You can also adjust color in the Video menu.

*Transmission*

[k][i][ ][Set ID][ ][Data][Cr]

Data Min : 0 ~ Max : 64

- Refer to 'Real data mapping'. See page 55.

*Acknowledgement*

[i][ ][Set ID][ ][OK][Data][x]

**10. Tint (Command2:j)**

- ▶ To adjust the screen tint.  
You can also adjust tint in the Video menu.

*Transmission*

[k][j][ ][Set ID][ ][Data][Cr]

Data Red : 0 ~ Green : 64

- Refer to 'Real data mapping'. See page 55.

*Acknowledgement*

[j][ ][Set ID][ ][OK][Data][x]

**11. Sharpness (Command2:k)**

- ▶ To adjust the screen sharpness.  
You can also adjust sharpness in the Video menu.

*Transmission*

[k][k][ ][Set ID][ ][Data][Cr]

Data Min: 0 ~ Max: 64

- Refer to 'Real data mapping'. See page 55.

*Acknowledgement*

[k][ ][Set ID][ ][OK][Data][x]

**12. OSD Select (Command2:l)**

- ▶ To select OSD (On Screen Display) on/off.

*Transmission*

[k][l][ ][Set ID][ ][Data][Cr]

Data 0: OSD off 1: OSD on

*Acknowledgement*

[l][ ][Set ID][ ][OK][Data][x]

**13. Remote Control Lock Mode (Command2:m)**

- ▶ To lock the remote control and the front panel controls on the set.

*Transmission*

[k][m][ ][Set ID][ ][Data][Cr]

Data 0: Lock off 1: Lock on

*Acknowledgement*

[m][ ][Set ID][ ][OK][Data][x]

**14. Treble (Command2:r)**

- ▶ To adjust treble.  
You can also adjust treble in the Audio menu.

*Transmission*

[k][r][ ][Set ID][ ][Data][Cr]

Data Min: 0 ~ Max: 64

- Refer to 'Real data mapping'. See page 55.

*Acknowledgement*

[r][ ][Set ID][ ][OK][Data][x]

**15. Bass (Command2:s)**

- ▶ To adjust bass.  
You can also adjust bass in the Audio menu.

*Transmission*

[k][s][ ][Set ID][ ][Data][Cr]

Data Min: 0 ~ Max: 64

- Refer to 'Real data mapping'. See page 55.

*Acknowledgement*

[s][ ][Set ID][ ][OK][Data][x]

**16. Balance (Command2:t)**

- ▶ To adjust balance.  
You can also adjust balance in the Audio menu.

*Transmission*

[k][t][ ][Set ID][ ][Data][Cr]

Data Min: 0 ~ Max: 64

- Refer to 'Real data mapping'. See page 55.

*Acknowledgement*

[t][ ][Set ID][ ][OK][Data][x]

**17. Color Temperature (Command2:u)**

- ▶ To adjust color temperature.  
You can also adjust color temperature in the Video menu.

*Transmission*

[k][u][ ][Set ID][ ][Data][Cr]

Data 0: Medium 1: Cool 2: Warm 3: User

*Acknowledgement*

[u][ ][Set ID][ ][OK][Data][x]

These functions are available in 42PC3DU/42PC3DVU/50PC3DU/ 60PC1D model only.

### 18. ISM Method (Command2:p)

- To avoid having a fixed image remain on screen.

#### Transmission

```
[j][p][ ][Set ID][ ][Data][Cr]
```

Data 1: Inversion  
2: Orbiter  
4: White Wash  
8: Normal

#### Acknowledgement

```
[p][ ][Set ID][ ][OK][Data][x]
```

### 19. Low Power (Command2:q)

- To control the Low Power function on/off.  
You can also adjust Low Power in Option menu.

#### Transmission

```
[j][q][ ][Set ID][ ][Data][Cr]
```

Data 0: Low Power off  
1: Low Power on

#### Acknowledgement

```
[q][ ][Set ID][ ][OK][Data][x]
```

### 20. Tune Command (Command: m a)

- To tune channel to following physical/major/minor number

#### Transmission

```
[m][a][ ][Set ID][ ][Data0][ ][Data1][ ][Data2][ ][Data3][ ][Data4][ ][Data5][Cr]
```

Data 0: Physical Channel Number(Transmit by Hexadecimal code)  
NTSC air:02~45  
NTSC cable: 01~87  
ATSC air:02~45  
ATSC cable:01~87

Data 1,Data 2: Major Channel Number(two part) or Channel Number(One part)  
Data1: High byte  
Data2: Low byte

Two part channel number: Major number-Minor number  
One part channel number: If the channel band is ATSC digital cable, it can be used. In case of using one part channel number, minor channel does not need.

Data 3, Data 4: Minor Channel Number Data3: High byte Data4: Low byte  
Data 5:

7	Main Picture	6	Two/One Part Channel	5	Using Physical Channel	4 Reserved	3	2	1	0	Step
0	Main	0	Two	0	Use	x	0	0	0	0	NTSC Air
1		1	One	1	No Use	x	0	0	0	1	NTSC Cable
						x	0	0	1	0	ATSC Air
						x	0	0	1	1	ATSC Cable_std
						x	0	1	0	0	ATSC Cable_irc
						x	0	1	0	1	ATSC Cable_irc
						x	0	1	1	0	ATSC cable_auto
						x	0	1	1	1	Reserved
						x	x	x	x	x	...
						x	1	1	1	1	Reserved

\* All data are transmitted by Hexadecimal code

#### \*Two/One part Channel: 6th bit

This bit is used in a cable-ready system.

#### \*Using physical channel: 5th bit

If the channel band is NTSC air or NTSC cable, channel tuning can be done by only physical channel. In this case, using physical channel bit must be low(0).

But if the channel band is ATSC air or ATSC cable, there are two cases that physical channel enable or disable.

If the physical channel sending is meaningful, you should set this bit low(0). If the physical channel sending is meaningless, you should set this bit high(1).

Example)

1. Analog channel: NTSC cable, channel number(35), main picture  
Command: ma 00 23 xx xx xx 01 attribute(0x01): main picture, two part(it's not mandatory), using physical channel, NTSC cable 'xx' data: don't care major and minor channel number in case analog channel tuning.
2. Digital channel: ATSC air, channel number(don't know physical channel, major(30), minor(3)), main picture  
Command: ma 00 xx 00 1E 00 03 22 attribute(0x22): main picture, two part, not using physical channel, ATSC air 'xx' data: don't care analog channel number in case digital channel tuning.
3. Digital channel: ATSC air, channel number (physical(20), major (30), minor (5)), main picture  
Command: ma 00 14 00 1E 00 05 02 attribute(0x02): main picture, two part, using physical channel, ATSC air.

#### Acknowledgement

```
[a][ ][Set ID][ ][OK][Data0][Data1][Data2][Data3][Data4][Data5][x]  
[a][ ][Set ID][ ][NG][Data0][x]
```

### 21. Channel Add/Del (Command: m b)

► To add and delete the channels

Transmission

```
[m][b][ ][Set ID][ ][Data][Cr]
```

Data 0: Channel Delete  
1: Channel Add

Acknowledgement

```
[b][ ][Set ID][ ][OK][Data][x]
[b][ ][Set ID][ ][NG][Data][x]
```

### 22. Key (Command: m c)

► To send IR remote key code

Transmission

```
[m][c][ ][Set ID][ ][Data][Cr]
```

Data Key code: Refer to page 60.

Acknowledgement

```
[c][ ][Set ID][ ][OK][Data][x]
```

### 23. Input select(Command: x b) (Main Picture Input)

► To select input source for TV.

Transmission

```
[x][b][ ][Set ID][ ][Data][Cr]
```

Data Structure

DATA(Hex)	INPUT
00	DTV (Antenna)
01	DTV (Cable)
10	Analog (Antenna)
11	Analog (Cable)
20	AV1
21	AV2
40	Component 1
41	Component 2
60	RGB PC
90	HDMI1/DVI
91	HDMI2

Acknowledgement

```
[b][ ][Set ID][ ][OK/NG][Data][x]
```

# IR Codes

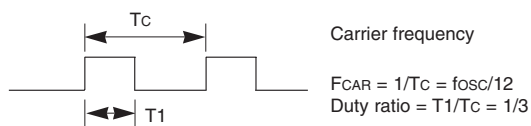
## How to Connect

- ▶ Connect your wired remote control to the Remote Control port on the TV.

## Remote Control IR Codes

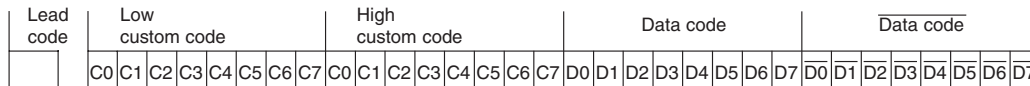
### ▶ Output waveform

Single pulse, modulated with 37.917KHz signal at 455KHz

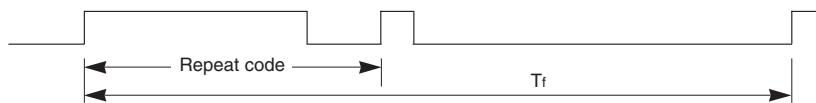


### ▶ Configuration of frame

- 1st frame



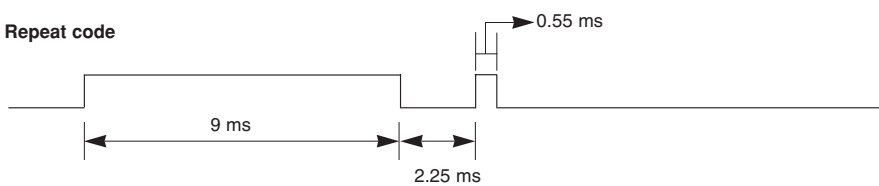
- Repeat frame



### ▶ Lead code

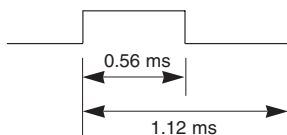


### ▶ Repeat code

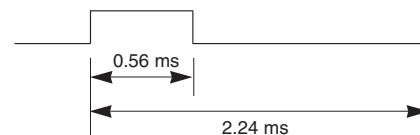


### ▶ Bit description

- Bit "0"

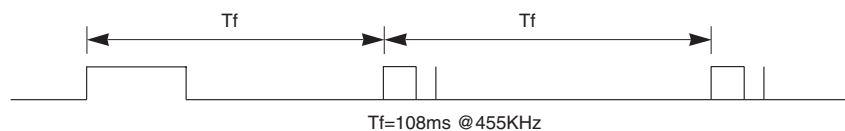


- Bit "1"



### ▶ Frame interval : Tf

The waveform is transmitted as long as a key is depressed.



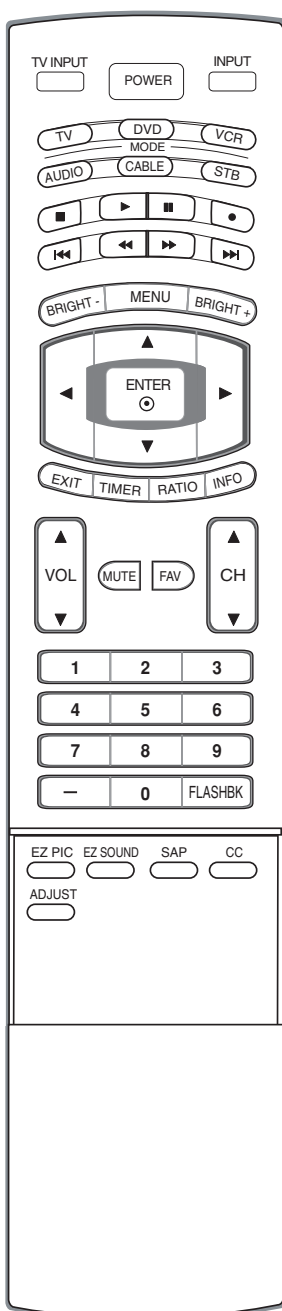
Code (Hexa)	Function	Note
0B	INPUT	R/C Button
0F	TV INPUT	R/C Button
98	MULTIMEDIA	R/C Button
08	POWER	R/C Button (Power On/Off)
C4	POWER ON	Discrete IR Code (Only Power On)
C5	POWER OFF	Discrete IR Code (Only Power Off)
79	RATIO	R/C Button
0E	TIMER	R/C Button
10 ~ 19	Number Key 0~ 9	R/C Button
4C	- (Dash)	R/C Button
1A	FLASHBK	R/C Button
09	MUTE	R/C Button
02	VOL ▲	R/C Button
03	VOL ▼	R/C Button
00	CH ▲	R/C Button
01	CH ▼	R/C Button
1E	FAV	R/C Button
AA	INFO	R/C Button
39	CC	R/C Button
40	▲	R/C Button
41	▼	R/C Button
07	◀	R/C Button
06	▶	R/C Button
44	ENTER	R/C Button
43	MENU	R/C Button
52	EZ SOUND	R/C Button
4D	EZ PIC	R/C Button
5B	EXIT	R/C Button
0A	SAP	R/C Button
CB	ADJUST	R/C Button
D6	TV	Discrete IR Code (TV Input Selection)
5A	AV1	Discrete IR Code (AV1 Input Selection)
D0	AV2	Discrete IR Code (AV2 Input Selection)
BF	COMPONENT 1	Discrete IR Code (Component1 Input Selection)
D4	COMPONENT 2	Discrete IR Code (Component2 Input Selection)
D5	RGB-PC	Discrete IR Code (RGB-PC Input Selection)
CE	HDMI1/DVI	Discrete IR Code (HDMI-DVI Input Selection)
CC	HDMI2	Discrete IR Code (HDMI2 Input Selection)
76	Ratio 4:3	Discrete IR Code (Only 4:3 Mode)
77	Ratio 16:9	Discrete IR Code (Only 16:9 Mode)
AF	Ratio Zoom	Discrete IR Code (Only Zoom1 Mode)

## Programming the Remote

- ▶ The remote control is a multi-brand or universal remote control. It can be programmed to operate most remote-controllable devices of other manufacturers.

Note that the remote control may not control all models of other brands.

### Programming a code into a remote mode



- 1** Test your remote control.  
To find out whether your remote control can operate the component without programming, turn on the component such as a VCR and press the corresponding **MODE** button (VCR) on the remote control, while illuminating on the selected component. Test the **POWER** button to see if the component responds properly. If not, the remote requires programming to operate the device.
- 2** Turn on the component to be programmed, then press the corresponding **MODE** button on the remote control.
- 3** Press the **MENU** and **MUTE** buttons simultaneously for 2 seconds, the button selected component lights on the remote control. If you don't press any button for 20 seconds, the button selected component will turn off on the remote control. At a moment, you have to repeat from step 2.
- 4** Enter a code number using the number buttons on the remote. When pressing the button, the light is blinked at a time. Programming code numbers for the corresponding component can be found on the following pages. Again, if the code is correct, the device will turn off.
- 5** Press the **MENU** button to store the code. After blinking twice, this code is stored.
- 6** Test the remote control functions to see if the component responds properly. If not, repeat from step 2.

# Programming Codes

## VCRs

Brand	Codes	Brand	Codes	Brand	Codes	Brand	Codes
AIWA	034	KENWOOD	014 034 039 043	PORTLAND	108	TATUNG	039 043
AKAI	016 043 046 124		047 048	PULSAR	072	TEAC	034 039 043
	125 146	LG (GOLDSTAR)	001 012 013 020	QUARTZ	011 014	TECHNICS	031 033 070
AMPRO	072		101 106 114 123	QUASAR	033 066 075 145	TEKNIKA	019 031 033 034
ANAM	031 033 103	LLOYD	034	RCA	013 020 033 034		101
AUDIO DYNAMICS	012 023 039 043	LXI	003 009 013 014		040 041 062 063	THOMAS	034
BROKSONIC	035 037 129		017 034 101 106		107 109 140 144	TMK	006
CANON	028 031 033	MAGIN	040	REALISTIC	145 147	TOSHIBA	008 013 042 047
CAPEHART	108	MAGNAVOX	031 033 034 041		003 008 010 014		059 082 112 131
CRAIG	003 040 135		067 068		031 033 034 040	TOTEVISION	040 101
CURTIS MATHES	031 033 041	MARANTZ	012 031 033 067		053 054 101	UNITECH	040
DAEWOO	005 007 010 064		069	RICO	058	VECTOR RESEARCH	012
	065 108 110 111	MARTA	101	RUNCO	148	VICTOR	048
	112 116 117 119	MATSUI	027 030	SALORA	014	VIDEO CONCEPTS	012 034 046
DAYTRON	108	MEI	031 033	SAMSUNG	032 040 102 104	VIDEOSONIC	040
DBX	012 023 039 043	MEMOREX	003 010 014 031		105 107 109 112	WARDS	003 013 017 024
DYNATECH	034 053		033 034 053 072		113 115 120 122		031 033 034 040
ELECTROHOME	059		101 102 134 139		125		053 054 131
EMERSON	006 017 025 027	MGA	045 046 059	SANSUI	022 043 048 135	YAMAHA	012 034 039 043
	029 031 034 035	MINOLTA	013 020	SANYO	003 007 010 014	ZENITH	034 048 056
	036 037 046 101	MITSUBISHI	013 020 045 046		102 134		058 072 080 101
	129 131 138 153		049 051 059 061	SCOTT	017 037 112 129		
FISHER	003 008 009 010		151		131		
FUNAI	034	MTC	034 040	SEARS	003 008 009 010		
GE	031 033 063 072	MULTITECH	024 034		013 014 017 020		
	107 109 144 147	NEC	012 023 039 043		031 042 073 081		
GO VIDEO	132 136		048		101		
HARMAN KARDON	012 045	NORDMENDE	043	SHARP	031 054 149		
HITACHI	004 018 026 034	OPTONICA	053 054	SHINTOM	024		
	043 063 137 150	PANASONIC	066 070 074 083	SONY	003 009 031 052		
INSTANTREPLAY	031 033		133 140 145		056 057 058 076		
JCL	031 033	PENTAX	013 020 031 033		077 078 149		
JCPENNY	012 013 015 033		063	SOUNDESIGN	034		
	040 066 101	PHILCO	031 034 067	STS	013		
JENSEN	043	PHILIPS	031 033 034 054	SYLVANIA	031 033 034 059		
JVC	012 031 033 043		067 071 101		067		
	048 050 055 060	PILOT	101	SYMPHONIC	034		
	130 150 152	PIONEER	013 021 048	TANDY	010 034		

## Cable Box

Brand	Codes	Brand	Codes	Brand	Codes	Brand	Codes
ABC	003 004 039 042	GOLDEN CHANNEL	030	PIONEER	065 085 090	SPRUCER	047 078
	046 052 053	HAMLIN	049 050 055		034 051 052 063	STARCOM	002 004 008 009
AJIN	112	HITACHI	052 055		076	STARGATE	008 030
ANTRONIK	014	HOSPITALITY	070 077	POST NEWS WEEK	016	TADIRAN	030
ARCHER	005 007 014 024	JERROLD	002 003 004 008	PRUCER	059	TAEKWANG	110
CABLE STAR	026		009 010 052 069	PTS	011 048 071 072	TAIHAN	105
CENTURION	092		074		073 074	TANDY	017
CENTURY	007	LG (GOLDSTAR)	001 106 101 005	PULSAR	100	TEXSCAN	029
CITIZEN	007	M-NET	037	RCA	047	TOCOM	039 040 056
COLOUR VOICE	065 090	MACOM	033	REGAL	049 050	TOSHIBA	100
COMBANO	080 081	MAGNAVOX	010 012 064 079	REGENCY	057	UNIKA	007 014 024
COMTRONICS	019 030	MEMOREX	100	REMBRANT	025	UNITED CABLE	004 053
DIAMOND	023	MOVIE TIME	028 032	SAMSUNG	102 107 030 068	UNIVERSAL	005 007 014 024
EAGLE	020 030 040	NSC	015 028 038 071	SCIENTIFIC ATLANTA	003 011 041 042		026 027 032 035
EASTERN	057 062 066		073		043 045 046	VIEWSTAR	012 015 018 086
ELECTRICORD	032	OAK	016 031 037 053	SHERITECH	022		087 088 089
GE	072	PANASONIC	044 047	SIGNAL	030	ZENITH	100 114 060 093
GEMINI	008 022 025 054	PARAGON	100	SIGNATURE	052		
GI	052 074	PHILIPS	006 012 013 020	SL MARX	030		

## Digital Cable/Satellite Box

Brand	Codes	Brand	Codes	Brand	Codes	Brand	Codes
ALPHASTAR DSR	123	GENERAL INSTRUMENT	133 134	PACE SKY SATELLITE	143		088 090 107 130
AMPLICA	050		003 004 016 029	PANASONIC	060 142		137
BIRDVIEW	051 126 129		031 059 101	PANSAT	121	TOSHIBA	002 127
CHANNEL MASTER	013 014 015 018	HITACHI	139 140	PERSONAL CABLE	117	UNIDEN	016 025 042 043
	036 055	HOUSTON TRACKER	033 037 039 051	PHILIPS	071		044 045 048 049
CHAPARRAL	008 009 012 077		057 104	PICO	105		078 079 080 086
CITOH	054	HUGHES	068	PRESIDENT	019 102		101
CURTIS MATHES	050 145	JANIEL	060 147	PRIMESTAR	030 110 111	UNIDEN	135 136
DRAKE	005 006 007 010	JERROLD	061	PROSAT	072	VIEWSTAR	115
	011 052 112 116	KATHREIN	108	RCA	066 106	WINEGARD	128 146
	141	LEGEND	057	REALISTIC	043 074	ZENITH	081 082 083 084
DX ANTENNA	024 046 056 076	LG	001	SAMSUNG	123		091 120
ECHOSTAR	038 040 057 058	LUTRON	132	SATELLITE SERVICE CO	028 035 047 057		
	093 094 095 096	LUXOR	062 144		085		
	097 098 099 100	MACOM	010 059 063 064	SCIENTIFIC ATLANTA	032 138		
	122		065	SONY	103		
ELECTRO HOME	089	MEMOREX	057	STARCAST	041		
EUROPLUS	114	NEXTWAVE	028 124 125	SUPER GUIDE	020 124 125		
FUJITSU	017 021 022 027	NORSAT	069 070	TEECOM	023 026 075 087		

## Audio

Brand	Codes	Brand	Codes	Brand	Codes	Brand	Codes
AIWA	014 028 070 096	JVC	004 013 141	PHILIPS	026 112 143	TOSHIBA	137
	125 129 139 229	KEC	185 186 187	PIONEER	039 042 043 063	THE	061
	230	KENWOOD	038 050 067 089		065 091 093 094	VICTOR	088 131
AKAI	163		170 171 197 206	QUASAR	113	WARDS	089
ANAM	003 014 017 023		215 222	RCA	080	YAMAHA	054 055 066 092
	059 106 189 216	KOHEL	030	RCX	092		199
	217 235 236	NAD	045 046	REALISTIC	103 106		
BURMECTER	252	LOTTE	014 016 036 098	SAMSUNG	124 145 146 182		
CARVER	086		100 172 173 174		193 194 195 203		
CLARION	199		175 176 177 178		204 244 245 246		
DAEWOO	027 053 060 084		179 180 181 183	SANSUI	011 135 138 144		
	102 148 198 221		201 202 208 213	SANYO	019 083 234		
DENON	015 075 130 143		214 219 223 232	SCOTT	106 186		
FANTASIA	071		238 240	SHARP	031 032 051 052		
FINEARTS	022	LXI	103		072 082 117 119		
FISHER	089 099	MAGNAVOX	111		156 184 199 200		
LG(GOLDSTAR)	001 021 024 029	MARANTZ	002 018 020 025		206 209		
	087 107 108 110		034 041 081 090	SHERWOOD	005 006 158		
	190 191 192 210		097 112	SONY	044 045 109 114		
	211 212 239	MCINTOSH	049		118 126 248 249		
HAITAI	034 035 188 222	MCS	104	TAEKWANG	012 020 073 074		
HARMAN/KARDON	068	MEMOREX	107		076 077 105 161		
INKEL	037 058 062 069	NAD	046		162 163 164 165		
	078 079 095 121	ONKYO	013 040 041 047		166 167 168 169		
	122 149 150 151		048 056 057 132		205 231 233 242		
	152 153 154 155		133 140	TEAC	010 085 106 136		
	157 158 159 160	OPTIMUS	158		185 187 237		
	189 207 222 224	PANASONIC	007 033 064 113	TECHNICS	101 113 128 134		
	225 226 227 243		142 220 241 251		147 218		
	247	PENNEY	104				

## DVD

Brand	Codes	Brand	Codes	Brand	Codes	Brand	Codes
APEX DIGITAL	022	MAGNAVOX	013	PHILIPS	013	SONY	007
DENON	020 014	MARANTZ	024	PIONEER	004 026	THOMPSON	005 006
GE	005 006	MITSUBISHI	002	PROCEED	021	TOSHIBA	019 008
HARMAN KARDON	027	NAD	023	PROSCAN	005 006	YAMAHA	009 018
JVC	012	ONKYO	008 017	RCA	005 006	ZENITH	010 016 025
LG	001 010 016 025	PANASONIC	003 009	SAMSUNG	011 015		



## Troubleshooting Checklist

<b>The operation does not work normally.</b>	
<b>The remote control doesn't work</b>	<ul style="list-style-type: none"> <li>• Check to see if there is any object between the product and the remote control causing obstruction.</li> <li>• Are batteries installed with correct polarity (+ to +, - to -)?</li> <li>• Correct remote operating mode set: TV, VCR etc.?</li> <li>• Install new batteries.</li> </ul>
<b>Power is suddenly turned off</b>	<ul style="list-style-type: none"> <li>• Is the sleep timer set?</li> <li>• Check the power control settings. Power interrupted</li> <li>• No broadcast on station tuned with Auto off activated.</li> </ul>

<b>The video function does not work.</b>	
<b>No picture &amp; No sound</b>	<ul style="list-style-type: none"> <li>• Check whether the product is turned on.</li> <li>• Try another channel. The problem may be with the broadcast.</li> <li>• Is the power cord inserted into wall power outlet?</li> <li>• Check your antenna direction and/or location.</li> <li>• Test the wall power outlet, plug another product's power cord into the outlet where the product's power cord was plugged in.</li> </ul>
<b>Picture appears slowly after switching on</b>	<ul style="list-style-type: none"> <li>• This is normal, the image is muted during the product startup process. Please contact your service center, if the picture has not appeared after five minutes.</li> </ul>
<b>No or poor color or poor picture</b>	<ul style="list-style-type: none"> <li>• Adjust Color in menu option.</li> <li>• Keep a sufficient distance between the product and the VCR.</li> <li>• Try another channel. The problem may be with the broadcast.</li> <li>• Are the video cables installed properly?</li> <li>• Activate any function to restore the brightness of the picture.</li> </ul>
<b>Horizontal/vertical bars or picture shaking</b>	<ul style="list-style-type: none"> <li>• Check for local interference such as an electrical appliance or power tool.</li> </ul>
<b>Poor reception on some channels</b>	<ul style="list-style-type: none"> <li>• Station or cable product experiencing problems, tune to another station.</li> <li>• Station signal is weak, reorient antenna to receive weaker station.</li> <li>• Check for sources of possible interference.</li> </ul>
<b>Lines or streaks in pictures</b>	<ul style="list-style-type: none"> <li>• Check antenna (Change the direction of the antenna).</li> </ul>

The audio function does not work.	
<b>Picture OK &amp; No sound</b>	<ul style="list-style-type: none"> <li>• Press the <b>VOL</b> or <b>VOLUME</b> button.</li> <li>• Sound muted? Press <b>MUTE</b> button.</li> <li>• Try another channel. The problem may be with the broadcast.</li> <li>• Are the audio cables installed properly?</li> </ul>
<b>No output from one of the speakers</b>	<ul style="list-style-type: none"> <li>• Adjust Balance in menu option.</li> </ul>
<b>Unusual sound from inside the product</b>	<ul style="list-style-type: none"> <li>• A change in ambient humidity or temperature may result in an unusual noise when the product is turned on or off and does not indicate a fault with the product.</li> </ul>

There is a problem in PC mode. (Only PC mode applied)	
<b>The signal is out of range.</b>	<ul style="list-style-type: none"> <li>• Adjust resolution, horizontal frequency, or vertical frequency.</li> <li>• Check it whether the signal cable is connected or loose.</li> <li>• Check the input source.</li> </ul>
<b>Vertical bar or stripe on background &amp; Horizontal Noise &amp; Incorrect position</b>	<ul style="list-style-type: none"> <li>• Work the Auto configure or adjust clock, phase, or H/V position. (Option)</li> </ul>
<b>Screen color is unstable or single color</b>	<ul style="list-style-type: none"> <li>• Check the signal cable.</li> <li>• Reinstall the PC video card.</li> </ul>

## Maintenance

- Early malfunctions can be prevented. Careful and regular cleaning can extend the amount of time you will have your new TV. Be sure to turn the power off and unplug the power cord before you begin any cleaning.

### Cleaning the Screen

1. Here's a great way to keep the dust off your screen for a while. Wet a soft cloth in a mixture of lukewarm water and a little fabric softener or dish washing detergent. Wring the cloth until it's almost dry, and then use it to wipe the screen.
2. Make sure the excess water is off the screen, and then let it air-dry before you turn on your TV.

### Cleaning the Cabinet

To remove dirt or dust, wipe the cabinet with a soft, dry, lint-free cloth. Please do not use a wet cloth.

### Extended Absence



If you expect to leave your TV dormant for a long time (such as a vacation), it's a good idea to unplug the power cord to protect against possible damage from lightning or power surges.

# Product Specifications

<b>60PC1D</b> (60PC1D-UE)	Dimensions (Width x Height x Depth)	with stand	60.8 x 40.8 x 16.0 inches 1544.0 x 1035.5 x 408.2 mm
		without stand	60.8 x 38.4 x 4.7 inches 1544.0 x 977.0 x 119.2 mm
	Weight	with stand	163 pounds / 74.0 kg
		without stand	137.3 pounds / 62.26 kg
<b>42PC3DU</b> (42PC3DU-UE)	Dimensions (Width x Height x Depth)	with stand	44.4 x 29.5x 15.0 inches 1129.0 x 748.5 x 380.0 mm
		without stand	44.4 x 27.4 x 4.1 inches 1129.0 x 695 x 103.7 mm
	Weight	with stand	64.4 pounds / 29.2 kg
		without stand	55.8 pounds / 25.3 kg
<b>42PC3DVU</b> (42PC3DVU-UE)	Dimensions (Width x Height x Depth)	with stand	44.4 x 29.5x 15.0 inches 1129.0 x 748.5 x 380.0 mm
		without stand	44.4 x 27.4 x 4.1 inches 1129.0 x 695 x 103.7 mm
	Weight	with stand	62.6 pounds / 28.4 kg
		without stand	54.0 pounds / 24.5 kg
<b>50PC3DU</b> (50PC3DU-UE)	Dimensions (Width x Height x Depth)	with stand	51.3 x 34.3 x 14.0 inches 1302.6 x 872.0 x 355.8 mm
		without stand	51.3 x 31.9 x 4.2 inches 1302.6 x 810.0 x 107.7 mm
	Weight	with stand	114.4 pounds / 51.9 kg
		without stand	95.0 pounds / 43.1 kg
Power requirement		AC100-240V ~ 50/60Hz	
Television System		NTSC-M, ATSC, 64 & 256 QAM	
Program Coverage		VHF 2 ~ 13, UHF 14 ~ 69, CATV 1 ~ 135, CADTV 1 ~ 135, DTV 2 ~ 69	
External Antenna Impedance		75 Ω	
Environmental condition	Operating Temperature		32 ~ 104°F (0 ~ 40°C)
	Operating Humidity		Less than 80%
	Storage Temperature		-4 ~ 140°F (-20 ~ 60°C)
	Storage Humidity		Less than 85%

• The specifications shown above may be changed without prior notice for quality improvement.

<b>32LC2DU</b> (32LC2DU-UE)	Dimensions (Width x Height x Depth)	with stand	31.9 x 24.8 x 9.3 inches 811 x 630 x 235 mm
		without stand	31.9 x 22.3 x 4.9 inches 811.0 x 566.8 x 123.5 mm
	Weight	with stand	48.3 pounds / 21.9 kg
		without stand	40.8 pounds / 18.5 kg
<b>37LC2DU</b> (37LC2DU-UE)	Dimensions (Width x Height x Depth)	with stand	37.2 x 28.7 x 11.3 inches 944 x 729 x 286 mm
		without stand	37.2 x 26.0 x 5.1 inches 944.0 x 659.3 x 129.7 mm
	Weight	with stand	65.0 pounds / 29.5 kg
		without stand	54.9 pounds / 24.9 kg
<b>42LC2DU</b> (42LC2DU-UE)	Dimensions (Width x Height x Depth)	with stand	41.5 x 32.0 x 11.9 inches 1054 x 813 x 302 mm
		without stand	41.5 x 29.4 x 5.4 inches 1054.0 x 746.0 x 136.8 mm
	Weight	with stand	81.6 pounds / 37.0 kg
		without stand	67.0 pounds / 30.4 kg
Power requirement		AC100-240V ~ 50/60Hz	
Television System		NTSC-M, ATSC, 64 & 256 QAM	
Program Coverage		VHF 2 ~ 13, UHF 14 ~ 69, CATV 1 ~ 135, CADTV 1 ~ 135, DTV 2 ~ 69	
External Antenna Impedance		75 Ω	
Environmental condition	Operating Temperature		32 ~ 104°F (0 ~ 40°C)
	Operating Humidity		Less than 80%
	Storage Temperature		-4 ~ 140°F (-20 ~ 60°C)
	Storage Humidity		Less than 85%

- The specifications shown above may be changed without prior notice for quality improvement.

