

## Connecting to a HD receiver, DVD Player, or VCR

Connect a HD receiver, DVD Player, or VCR to the TV and select an appropriate input mode.

### HDMI Connection

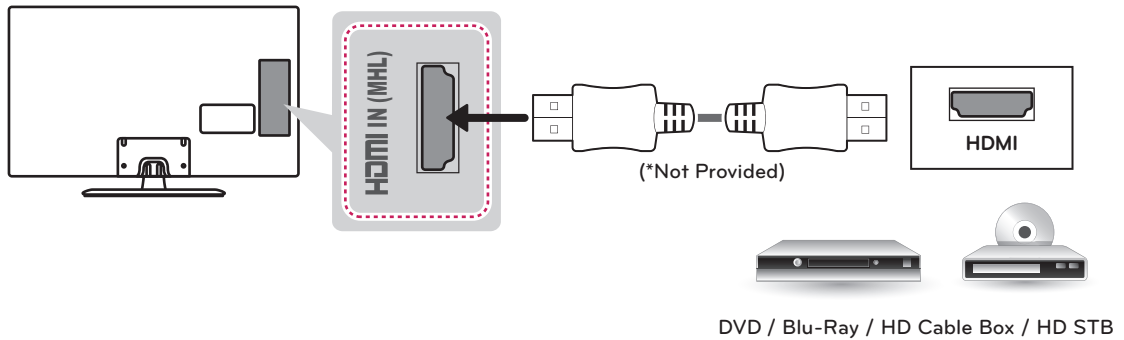
**HDMI is the best way to connect a device.**

Transmits digital video and audio signals from an external device to the TV. Connect the external device and the TV with the HDMI cable as shown in the following illustration.

#### ! NOTE

- Use the latest High Speed HDMI™ Cable that supports CEC (Customer Electronics Control) function.
- High Speed HDMI™ Cables are tested to carry an HD signal up to 1080p and higher.
- HDMI Audio Supported Format: Dolby Digital, PCM (Up to 192 kHz, 32 kHz / 44.1 kHz / 48 kHz / 96 kHz / 192 kHz)  
-> DTS is not supported.

Choose any HDMI input port to connect.  
It does not matter which port you use.



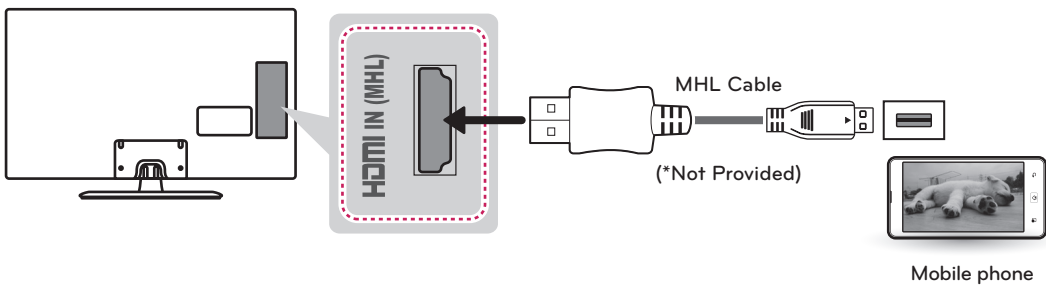
## Connecting to a mobile phone

(For LN530B, LN5300, LN5310, LN5400 series)

Mobile High-definition Link (MHL) is an interface for transmitting digital audio/visual signals from mobile phones to television sets.

### ! NOTE

- Connect the mobile phone to the HDMI IN 2 (MHL) port to view the phone screen on the TV.
- This only works with an MHL-enabled phones.
- With some MHL supporting mobile phones, you can use the TV remote to control the phone.
- An MHL supported cable is needed to connect the TV and a mobile phone.
- Remove the MHL cable from the TV when:
  - the MHL function is disabled.
  - your mobile device is fully charged in standby mode.

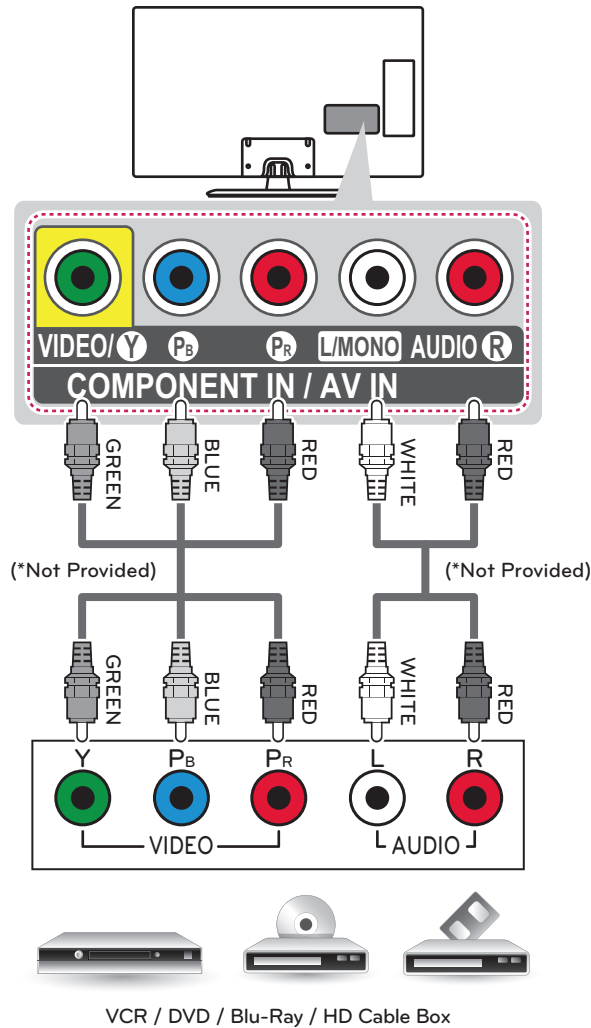


## Component Connection

Transmits analog video and audio signals from an external device to the TV. Connect the external device and the TV with a component cable as shown in the following illustration.

### ! NOTE

- If cables are installed incorrectly, it could cause the image to display in black and white or with distorted color.
- Check to ensure the cables are matched with the corresponding color connection.

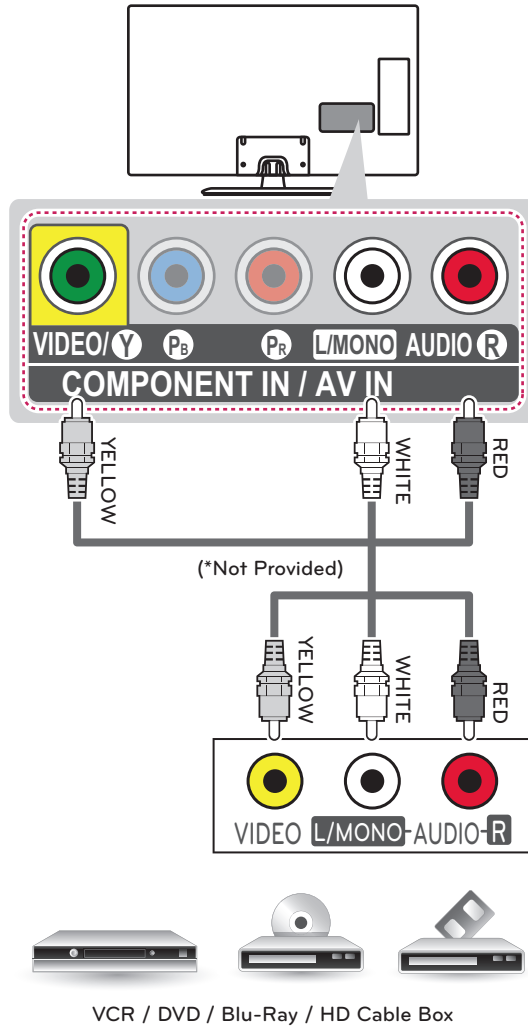


## Composite Connection

Transmits analog video and audio signals from an external device to the TV. Connect the external device and the TV with the composite cable as shown in the following illustration.

**NOTE**

- If you have a mono VCR, connect the audio cable from the VCR to the AUDIO L/MONO jack of the TV.

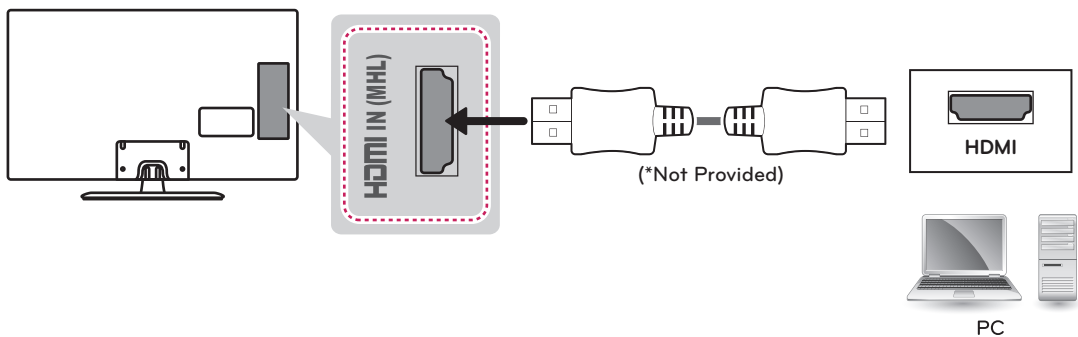


## Connecting a PC

### ! NOTE

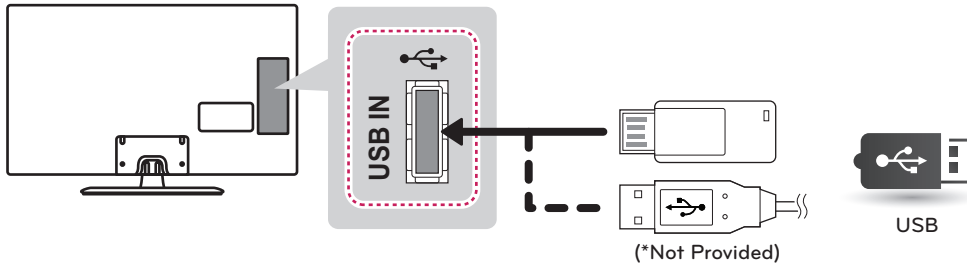
- Use an HDMI connection for the best image quality.
- Depending upon the graphics card, DOS mode video may not work if a HDMI to DVI Cable is in use.
- In PC mode, there may be noise associated with the resolution, vertical pattern, contrast, or brightness. If noise is present, change the PC output to another resolution, change the refresh rate to another rate or adjust the brightness and contrast on the PICTURE menu until the picture is clear.
- The synchronization input form for Horizontal and Vertical frequencies is separate.
- Depending on the graphics card, some resolution settings may not allow the image to be positioned on the screen properly.
- If you use DVI to HDMI cable for PC, you have to use external speaker for PC audio sound.

### HDMI Connection



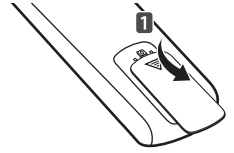
## Connecting a USB Device

Connect a USB storage device such as a USB flash memory, external hard drive, or a USB memory card reader to the TV.



# REMOTE CONTROL

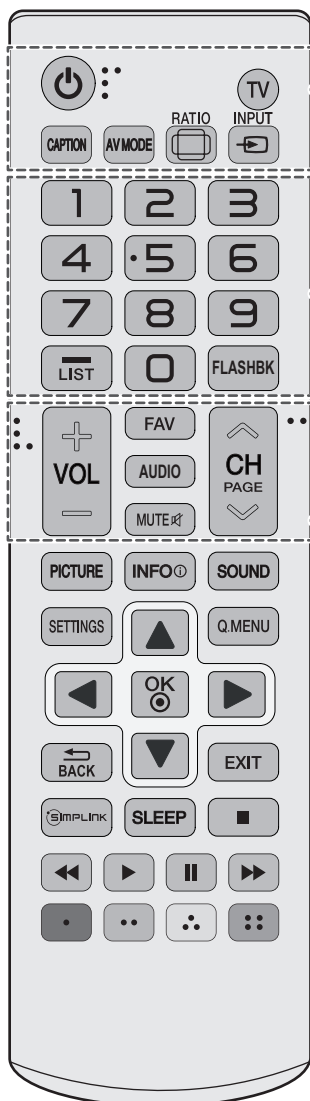
The descriptions in this manual are based on the buttons on the remote control. Please read this manual carefully and use the TV correctly. To install batteries, open the battery cover, replace batteries (1.5 V AAA) matching the ⊕ and ⊖ ends to the label inside the compartment, and close the battery cover. To remove the batteries, perform the installation actions in reverse.



## ⚠ CAUTION

- Do not mix old and new batteries, as this may damage the remote control.

This remote uses infrared light. When in use, it should be pointed in the direction of the TV's remote sensor.



### ⏻ (POWER)

Turns the TV on or off.

### TV

Returns to the last TV channel.

### CAPTION

Activates or deactivate the subtitles.

### AV MODE

Selects an AV mode.

### ☐ RATIO

Resizes an image.

### ➡ INPUT

Changes the input source. Turns the TV on if it is off.

### Number button

Enters numbers.

### - (Dash)

Inserts a dash between numbers such as 2-1 and 2-2.

### LIST

Accesses the saved channel list.

### FLASHBK

Alternates between the two last channels selected (pressing repeatedly).

### + VOL -

Adjusts the volume level.

### FAV

Accesses your favorite channel list.

### AUDIO

Digital signal: Changes the audio language.  
Analog signal: Changes the MTS sound.

### MUTE 🚫

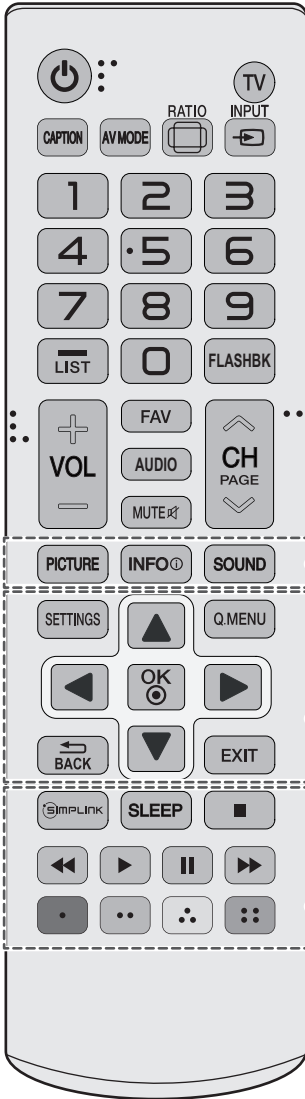
Mutes all sounds.

### ⏪ CH ⏩

Scrolls through the saved channels.

### ⏪ PAGE ⏩

Moves to the previous or next screen.



**PICTURE**

Changes the image mode.

**INFO**

Shows information on the current program.

**SOUND**

Changes the sound mode.

**SETTINGS**

Accesses the main menu.

**Q.MENU**

Accesses the quick menu.

**Navigation buttons** (up/down/left/right)

Scrolls through menus or options.

**OK**

Selects menus or options and confirms your input.

**BACK**

Returns to the previous screen.

**EXIT**

Clears all on-screen displays and returns to TV viewing.

**SIMPLINK**

Accesses the AV devices connected to the TV.  
Opens the SIMPLINK menu.

**SLEEP**

Sets the length of time until the TV to turns off.

**Control buttons** ( )

Controls SIMPLINK compatible devices (USB, SIMPLINK).

**Color buttons**

These access special functions in some menus.  
( : Red, : Green, : Yellow, : Blue)



## WATCHING TV

### Turning the TV on for the first time

When you turn the TV on for the first time, the Initial setting screen appears. Select a language and customize the basic settings.

- 1 Connect the power cord to a power outlet.
- 2 In standby mode, press the power button on the remote control to turn the TV on. The Initial setting screen appears when you turn the TV on for the first time.

#### ! NOTE

- You can also access **Initial Setting** by accessing **OPTION** in the main menu.

- 3 Follow the on-screen instructions to customize your TV settings according to your preferences.

|              |   |
|--------------|---|
| Language     | Selects a language to display.                    |
| ↓            |   |
| Mode Setting | Selects <b>Home Use</b> for the home environment. |
| ↓            |   |
| Time Setting | Selects the time zone and daylight saving.        |
| ↓            |   |
| Auto Tuning  | Scans and saves available channels automatically. |

#### ! NOTE

- To display images in the best quality for your home environment, select **Home Use**.
- **Store Demo** is suitable for the retail environment.
- If you select **Store Demo**, any customized settings will switch back to the default settings of **Store Demo** in 5 minutes.

- 4 When the basic settings are complete, press the **OK**.

#### ! NOTE

- If you do not complete the initial setting, it will appear whenever the TV turns on.
- Disconnect the power cord from the power outlet when you do not use the TV for a long period of time.

- 5 To turn the TV off, press the power button on the remote control.

# SPECIFICATIONS

Product specifications may be changed without prior notice due to upgrade of product functions.

|                                   |  |                                 |
|-----------------------------------|--|---------------------------------|
| <b>Power requirement</b>          | AC 100 - 240 V ~ 50 / 60 Hz                            |                                 |
| <b>Television System</b>          | NTSC-M, ATSC, 64 & 256 QAM                             |                                 |
| <b>Program Coverage</b>           | VHF 2-13, UHF 14-69, CATV 1-135, DTV 2-69, CADTV 1-135 |                                 |
| <b>External Antenna Impedance</b> | 75 Ω   |                                 |
| <b>Environment condition</b>      | Operating Temperature                                  | 0 °C ~ 40 °C (32 °F ~ 104 °F)   |
|                                   | Operating Humidity                                     | Less than 80 %                  |
|                                   | Storage Temperature                                    | -20 °C ~ 60 °C (-4 °F ~ 140 °F) |
|                                   | Storage Humidity                                       | Less than 85 %                  |

| MODELS                            |               | 42LN5390<br>(42LN5390-UN)  | 47LN5390<br>(47LN5390-UN)  |
|-----------------------------------|---------------|----------------------------|----------------------------|
| Dimensions<br>(W x H x D)         | With stand    | 968 x 670.5 x 251.8 (mm)   | 1080 x TBD x TBD (mm)      |
|                                   |               | 38.1 x 26.3 x 9.9 (inches) | 42.5 x TBD x TBD (inches)  |
|                                   | Without stand | 968 x 579 x 79 (mm)        | 1080 x 642 x 80.5 (mm)     |
|                                   |               | 38.1 x 22.7 x 3.1 (inches) | 42.5 x 25.2 x 3.1 (inches) |
| Weight                            | With stand    | 12.6 kg (15.4 lbs)         | TBD kg (TBD lbs)           |
|                                   | Without stand | 9.3 kg (14.1 lbs)          | TBD kg (TBD lbs)           |
| Current Value / Power consumption |               | TBD A / TBD W              | TBD A / TBD W              |

**HDMI (PC) supported mode**

| Resolution  | Horizontal Frequency (kHz) | Vertical Frequency (Hz) |
|-------------|----------------------------|-------------------------|
| 640 x 350   | 31.468                     | 70.09                   |
| 720 x 400   | 31.469                     | 70.08                   |
| 640 x 480   | 31.469                     | 59.94                   |
| 800 x 600   | 37.879                     | 60.31                   |
| 1024 x 768  | 48.363                     | 60.00                   |
| 1360 x 768  | 47.712                     | 60.015                  |
| 1152 x 864  | 54.348                     | 60.053                  |
| 1280 x 1024 | 63.981                     | 60.02                   |
| 1920 x 1080 | 67.50                      | 60.00                   |

**HDMI (DTV) supported mode**

| Resolution   | Horizontal Frequency (kHz) | Vertical Frequency (Hz) |
|--------------|----------------------------|-------------------------|
| 720 x 480p   | 31.47                      | 59.94                   |
|              | 31.50                      | 60.00                   |
| 1280 x 720p  | 44.96                      | 59.94                   |
|              | 45.00                      | 60.00                   |
| 1920 x 1080i | 33.72                      | 59.94                   |
|              | 33.75                      | 60.00                   |
| 1920 x 1080p | 26.97                      | 23.976                  |
|              | 27.00                      | 24.00                   |
|              | 33.71                      | 29.97                   |
|              | 33.75                      | 30.00                   |
|              | 67.432                     | 59.94                   |
|              | 67.50                      | 60.00                   |

**Component port connecting information**

|                           |   |                |                |
|---------------------------|---|----------------|----------------|
| Component ports on the TV | Y | P <sub>B</sub> | P <sub>R</sub> |
|---------------------------|---|----------------|----------------|

|                                  |   |                |                |
|----------------------------------|---|----------------|----------------|
| Video output ports on DVD player | Y | P <sub>B</sub> | P <sub>R</sub> |
|                                  | Y | B-Y            | R-Y            |
|                                  | Y | Cb             | Cr             |
|                                  | Y | Pb             | Pr             |

**Component supported mode**

| Resolution   | Horizontal Frequency (kHz) | Vertical Frequency (Hz) |
|--------------|----------------------------|-------------------------|
| 720 x 480i   | 15.73                      | 59.94                   |
|              | 15.73                      | 60.00                   |
| 720 x 480p   | 31.47                      | 59.94                   |
|              | 31.50                      | 60.00                   |
| 1280 x 720p  | 44.96                      | 59.94                   |
|              | 45.00                      | 60.00                   |
| 1920 x 1080i | 33.72                      | 59.94                   |
|              | 33.75                      | 60.00                   |
| 1920 x 1080p | 26.97                      | 23.94                   |
|              | 27.00                      | 24.00                   |
|              | 33.71                      | 29.97                   |
|              | 33.75                      | 30.00                   |
|              | 67.432                     | 59.94                   |
|              | 67.50                      | 60.00                   |

# TROUBLESHOOTING

## General

| Problem  | Solution   |
|--|--|
| Cannot control the TV with the remote control. | <ul style="list-style-type: none"> <li>• Check the remote control sensor on the product and try again.</li> <li>• Check if there is any obstacle between the product and the remote control.</li> <li>• Check if the batteries are still working and properly installed (⊕ to ⊕, ⊖ to ⊖).</li> </ul>   |
| No image display and no sound is produced.     | <ul style="list-style-type: none"> <li>• Check if the product is turned on.</li> <li>• Check if the power cord is connected to a wall outlet.</li> <li>• Check if there is a problem in the wall outlet by connecting other products.</li> </ul>   |
| Image appears slowly when the TV turns on.     | <ul style="list-style-type: none"> <li>• The image is muted during the product startup process. This is normal. If the image does not appear in a few minutes, unplug the TV for 30 seconds and try again. If the image still does not appear, contact the authorized service center in your local area.</li> </ul>  |
| Cannot connect external devices.               | <ul style="list-style-type: none"> <li>• Refer to the <b>Connection Overview</b> and connect an external device.</li> </ul>  |
| The TV turns off suddenly.                     | <ul style="list-style-type: none"> <li>• Check the power control settings. The power supply may be interrupted.</li> <li>• Check if the Auto sleep feature is activated in the Time settings. Refer to the <b>Sleep Timer</b>.</li> <li>• If there is no signal while the TV is on, the TV will turn off automatically after 15 minutes of inactivity. (Depending on model)</li> </ul> |

## Audio

| Problem   | Solution   |
|---|--|
| No sound is produced while images are displaying. | <ul style="list-style-type: none"> <li>• Press <b>VOL +</b> or <b>-</b> button.</li> <li>• Check if the sound is muted by pressing <b>MUTE</b>.</li> <li>• Scroll to other channels. There may be a problem with the broadcast.</li> <li>• Check if the TV Speaker feature is activated in the menu option.</li> </ul> |
| No output from one of the speakers                | <ul style="list-style-type: none"> <li>• Adjust Balance in the menu option.</li> </ul>   |
| Unusual sound from inside the TV is produced.     | <ul style="list-style-type: none"> <li>• A change in ambient humidity or temperature may result in an unusual noise when the product turns on or off. There is no problem with your product.</li> </ul>  |

## Video

| Problem  | Solution  |
|--|---|
| An image displays in black and white or the color quality is poor. | <ul style="list-style-type: none"> <li>Adjust the color setting in the menu option.</li> <li>Keep a sufficient distance between this product and other electronic products.</li> <li>Scroll to other channels. There may a problem with the broadcast.</li> </ul>   |
| Horizontal or vertical bars appears or images blur                 | <ul style="list-style-type: none"> <li>Check if there are local interferences such as an electrical appliance or power tool.</li> </ul>   |
| Lines or streaks appear on images                                  | <ul style="list-style-type: none"> <li>Check the antenna or aim the antenna to the proper direction.</li> </ul>   |
| Afterimages (ghosts) appear when the product turns off             | <ul style="list-style-type: none"> <li>Pixels may have been damaged from a fixed image displayed for a long time (image burn). Use a screen saver to prevent the pixel damage on the screen.</li> </ul>   |
| The power is on but the screen appears extremely dark.             | <ul style="list-style-type: none"> <li>Adjust the brightness and contrast in the menu option.</li> </ul>  |
| "No Signal" appears on the screen.                                 | <ul style="list-style-type: none"> <li>Check if the signal cable is connected between the TV and products properly.</li> <li>Check the selected input source by pressing <b>INPUT</b>.</li> </ul>   |
| Black spots appear on the screen.                                  | <ul style="list-style-type: none"> <li>Several pixels in red, green, white, or black may appear on the screen that can attribute to the characteristics of the panel.</li> <li>This is normal.</li> </ul>   |
| The display offset is wrong.                                       | <ul style="list-style-type: none"> <li>Adjust the position setting in the Picture menu.</li> <li>Check if the video card resolution and frequency are supported by the product. If the frequency is out of range, set to the recommended resolution using the display settings on the external device.</li> </ul> |
| Thin lines appear in the background of the screen.                 | <ul style="list-style-type: none"> <li>Check the video cable connections.</li> </ul>  |
| The reception on some channels is poor                             | <ul style="list-style-type: none"> <li>Scroll to other channels. There may a problem with the broadcast.</li> <li>The station signal may be weak. Aim the antenna to the proper direction.</li> <li>Check if there is local interferences such as an electrical appliance or power tool.</li> </ul>               |

## EXTERNAL CONTROL DEVICE SETUP

To obtain the external control device setup information, please visit [www.lg.com](http://www.lg.com).

# CHILD SAFETY:

It Makes A Difference How and Where You Use Your Flat Panel Display

**Congratulations on your purchase! As you enjoy your new product, please keep these safety tips in mind:**



## THE ISSUE

- The home theater entertainment experience is a growing trend and larger flat panel displays are popular purchases. However, flat panel displays are not always supported on the proper stands or installed according to the manufacturer's recommendations.
- Flat panel displays that are inappropriately situated on dressers, bookcases, shelves, desks, speakers, chests or carts may fall over and cause injury.

## THIS MANUFACTURER CARES!

- The consumer electronics industry is committed to making home entertainment enjoyable and safe.

## TUNE INTO SAFETY

- One size does NOT fit all. Follow the manufacturer's recommendations for the safe installation and use of your flat panel display.
- Carefully read and understand all enclosed instructions for proper use of this product.
- Don't allow children to climb on or play with furniture and television sets.
- Don't allow place flat panel displays on furniture that can easily be used as steps, such as a chest of drawers.
- Remember that children can become excited while watching a program, especially on a "larger than life" flat panel display. Care should be taken to place or install the display where it cannot be pushed, pulled over, or knocked down.
- Care should be taken to route all cords and cables connected to the flat panel display so that they cannot be pulled or grabbed by curious children.

## WALL MOUNTING: IF YOU DECIDE TO WALL MOUNT YOUR FLAT PANEL DISPLAY, ALWAYS:

- Use a mount that has been recommended by the display manufacturer and/or listed by an independent laboratory (such as UL, CSA, ETL).
- Follow all instructions supplied by the display and wall mount manufacturers.
- If you have any doubts about your ability to safely install your flat panel display, contact your retailer about professional installation.
- Make sure that the wall where you are mounting the display is appropriate. Some wall mounts are not designed to be mounted to walls with steel studs or old cinder block construction. If you are unsure, contact a professional installer.
- A minimum of two people are required for installation. Flat panel displays can be heavy.





The extended owner's manuals that contain information on the advanced features of this LG TV are located on the CD-ROM provided in an electronic version.

To read these files, you will need to use a personal computer (PC) equipped with a CD-ROM drive.

The model and serial numbers of the TV are located on the back and one side of the TV. Record them below should you ever need service.

MODEL \_\_\_\_\_

SERIAL \_\_\_\_\_

### LG Customer Information Center

For inquires or comments, visit [www.lg.com](http://www.lg.com) or call;

|                |                      |
|----------------|----------------------|
| 1-800-243-0000 | USA, Consumer User   |
| 1-888-865-3026 | USA, Commercial User |
| 1-888-542-2623 | CANADA               |

**Register your product Online!**

[www.lg.com](http://www.lg.com)



This product qualifies for ENERGY STAR in the factory default (Home Use) setting. Changing the factory default settings or enabling other features may increase power consumption that could exceed the limits necessary to qualify for ENERGY STAR.