



LCD TV

MODELS: 32LC2DU
37LC2DU
42LC2DU

PLASMA TV

MODELS: 42PC3DU
42PC3DVU
50PC3DU
60PC1D

OWNER'S MANUAL



Internet Home Page : <http://www.lge.com>
<http://www.lg.ca>

ENERGYSTAR is a set of power-saving guidelines issued by the U.S. Environmental Protection Agency(EPA).



As an ENERGY STAR Partner LGE U. S. A.,Inc. has determined that this product meets the ENERGY STAR guidelines for energy efficiency.

Please read this manual carefully before operating your set. Retain it for future reference. Record model number and serial number of the set. See the label attached on the back cover and quote this information to your dealer when you require service.

P/N O : 38289U0527F @
Printed in Korea

Warning



CAUTION
RISK OF ELECTRIC SHOCK
DO NOT OPEN



WARNING:

TO REDUCE THE RISK OF ELECTRIC SHOCK DO NOT REMOVE COVER (OR BACK). NO USER SERVICEABLE PARTS INSIDE. REFER TO QUALIFIED SERVICE PERSONNEL.



The lightning flash with arrowhead symbol, within an equilateral triangle, is intended to alert the user to the presence of uninsulated "dangerous voltage" within the product's enclosure that may be of sufficient magnitude to constitute a risk of electric shock to persons.



The exclamation point within an equilateral triangle is intended to alert the user to the presence of important operating and maintenance (servicing) instructions in the literature accompanying the appliance.

NOTE TO CABLE/TV INSTALLER:

This reminder is provided to call the CATV system installer's attention to Article 820-40 of the National Electric Code (U.S.A.). The code provides guidelines for proper grounding and, in particular, specifies that the cable ground shall be connected to the grounding system of the building, as close to the point of the cable entry as practical.

REGULATORY INFORMATION

This equipment has been tested and found to comply with the limits for a Class B digital device, pursuant to Part 15 of the FCC Rules. These limits are designed to provide reasonable protection against harmful interference in a residential installation. This equipment generates, uses and can radiate radio frequency energy and, if not installed and used in accordance with the instructions, may cause harmful interference to radio communications. However, there is no guarantee that interference will not occur in a particular installation. If this equipment does cause harmful interference to radio or television reception, which can be determined by turning the equipment off and on, the user is encouraged to try to correct the interference by one or more of the following measures:

- Reorient or relocate the receiving antenna.
- Increase the separation between the equipment and receiver.
- Connect the equipment into an outlet on a circuit different from that to which the receiver is connected.
- Consult the dealer or an experienced radio/TV technician for help.

Any changes or modifications not expressly approved by the party responsible for compliance could void the user's authority to operate the equipment.

CAUTION:

Do not attempt to modify this product in any way without written authorization from LG Electronics Corporation. Unauthorized modification could void the user's authority to operate this product.

COMPLIANCE:

The responsible party for this product's compliance is:
LG Electronics U.S.A., Inc.
1000 Sylvan Avenue, Englewood Cliffs, NJ 07632
Phone: 1-800-243-0000
<http://www.lgusa.com>

Safety Instructions

WARNING :

To reduce the risk of fire or electric shock, do not expose this apparatus to rain or moisture.

Apparatus shall not be exposed to dripping or splashing and no objects filled with liquids, such as vases, shall be placed on the apparatus.

IMPORTANT SAFETY INSTRUCTIONS

1. Read these instructions.

2. Keep these instructions.

3. Heed all warnings.

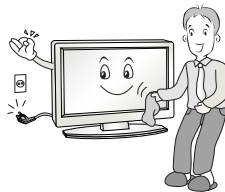
4. Follow all instructions.



5. Do not use this apparatus near water.



6. Clean only with a dry cloth.



7. Do not block any of the ventilation openings. Install in accordance with the manufacturer's instructions.

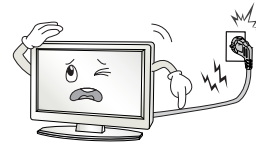


8. Do not install near any heat sources such as radiators, heat registers, stoves, or other apparatus (including amplifiers) that produce heat.



9. Do not defeat the safety purpose of the polarized or grounding type plug. A polarized plug has two blades with one wider than the other. A grounding type plug has two blades and a third grounding prong. The wide blade or the third prong is provided for your safety. When the provided plug does not fit into your outlet, consult an electrician for replacement of the obsolete outlet.

10. Protect the power cord from being walked on or pinched particularly at plugs, convenience receptacles, and the point where they exit from the apparatus.

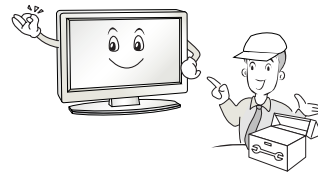


11. Only use the attachments / accessories specified by the manufacturer.

12. Use only with a cart, stand, tripod, bracket, or table specified by the manufacturer, or sold with the apparatus. When a cart is used, use caution when moving the cart / apparatus combination to avoid injury from tip-over.



14. Refer all servicing to qualified service personnel. Servicing is required when the apparatus has been damaged in any way, such as power supply cord or plug is damaged, liquid has been spilled or objects have fallen into the apparatus, the apparatus has been exposed to rain or moisture, does not operate normally, or has been dropped.



13. Unplug this apparatus during lightning storms or when unused for long periods of time.



15. DISCONNECTING DEVICE FROM MAINS

Main plug is the disconnecting device. The plug must remain readily operable.

Note

- If the TV feels cold to the touch, there may be a small “flicker” when when it is turned on. This is normal, there is nothing wrong with TV.
- Some minute dot defects may be visible on the screen, appearing as tiny red, green, or blue spots. However, they have no adverse effect on the monitor's performance.
- Avoid touching the LCD screen or holding your finger(s) against it for long periods of time. Doing so may produce some temporary distortion effects on the screen.

CAUTION concerning the Power Cord

Most appliances recommend they be placed upon a dedicated circuit; that is, a single outlet circuit which powers only that appliance and has no additional outlets or branch circuits. Check the specification page of this owner's manual to be certain.

Do not overload wall outlets. Overloaded wall outlets, loose or damaged wall outlets, extension cords, frayed power cords, or damaged or cracked wire insulation are dangerous. Any of these conditions could result in electric shock or fire. Periodically examine the cord of your appliance, and if its appearance indicates damage or deterioration, unplug it, discontinue use of the appliance, and have the cord replaced with an exact replacement part by an authorized servicer.

Protect the power cord from physical or mechanical abuse, such as being twisted, kinked, pinched, closed in a door, or walked upon. Pay particular attention to plugs, wall outlets, and the point where the cord exits the appliance.

On Disposal

- a. The fluorescent lamp used in this product contains a small amount of mercury.
- b. Do not dispose of this product with general household waste.
Disposal of this product must be carried out in accordance to the regulations of your local authority.

Contents

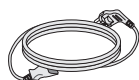
Introduction		2	Warnings
		3~4	Safety Instructions
		7	Accessories
		8	Controls (Model Name: 50PC3DU / 60PC1D)
		9	Connection Options (Model Name: 50PC3DU / 60PC1D)
		10	Controls (Model Name: 32/37/42LC2DU)
		11	Connection Options (Model Name: 32/37/42LC2DU)
		12~13	Remote Control Key Functions
		<hr/>	
		Installation	External Equipment Connections
15	Desktop Pedestal Installation		
16~17	Basic Connection		
18	Antenna or Cable Connection		
19~20	VCR Setup		
20	External AV Source Setup		
21~22	DVD Setup		
23~24	HDSTB Setup		
25	AV Out Setup		
25	Digital Audio Output		
26~28	PC Setup		
<hr/>			
Operation	Basic operation	29	Turning on the TV
		29	Volume Adjustment
		29	Channel Selection
		29	On Screen Menus Language Selection
		30	On Screen Menus Selection and Adjustment
	Setup Menu Options	31	EZ Scan (Channel Search)
		31	Manual Scan
		32	Channel Edit
		33	DTV Signal Strength
		33	Input Source
	Video Menu Options	34	Input Label
		35	Auto Picture Control(EZ Picture)
		35~36	Color Temperature Control
		37	XD
		38	Advanced-Cinema 3:2 Mode / Black Level
	Audio Menu Options	39	Video Reset
		40	Audio Language
		41	Auto Sound Control(EZ Sound)
41~42		Manual Sound Control (EZ Sound-User option)	
43		Balance	
43	TV Speakers On/Off Setup		

Operation	Time Menu Options	44	Auto Clock Setup
	Option Menu Features	44	Manual Clock Setup
		45	On/Off Timer Setup
45		Sleep Timer	
46		Auto Off	
47		Aspect Ratio Control	
Lock Menu Options	48	Caption/Text	
	49	Caption Option	
	49	Low Power (50PC3DU / 60PC1D only)	
	50	ISM (Image Sticking Minimization) Method (50PC3DU / 60PC1D only)	
		51~52	Parental Lock Setup
<hr/>			
Reference	53~58 External Control Device Setup		
	59~60 IR Codes		
	61 Programming the Remote		
	62~63 Programming Codes		
	64~65 Troubleshooting Checklist		
	65 Maintenance		
	66~67 Product Specifications		

Introduction

Accessories

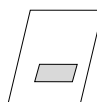
Ensure that the following accessories are included with your TV. If any accessory is missing, please contact the dealer from where you purchased the product. User must use shielded signal interface cables(D-sub 15 pin cable) with ferrite cores to maintain standard compliance for the product.



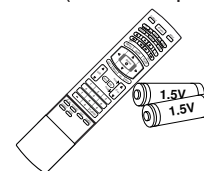
Power Cord



75Ω Round Cable



Owner's Manual

Remote Control /
Batteries

For 42PC3DU/3DVU/ 50PC3DU



2-Wall brackets

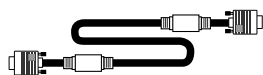


2-eye-bolts

42PC3DU/3DVU only

2-bolts
(Refer p.14)

Option Extras



D-sub 15 pin cable

For 32/37/42LC2DU

2-TV brackets
2-Wall brackets

2-TV Bracket Bolts

Twister Holder
Arrange the wires
with the twister holder.Cable
Management
(Refer p.16)

42LC2DU only

Polishing Cloth
Polish the TV with
the cloth.

32LC2DU only

4-bolts for stand
assembly
See below for detail
information.

[Polishing Cloth]

Slightly wipe stained spot on the exterior only with the cleansing cloths for the product exterior if there is stain or fingerprint on surface of the exterior.
Do not wipe roughly when removing stain. Please be cautious of that excessive power may cause scratch or discoloration.

For 60PC1D

2-TV brackets
2-Wall brackets

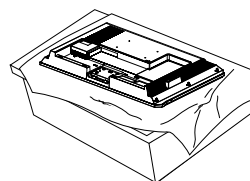
4- Bolts



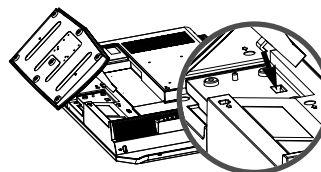
4-RING SPACER

Stand Installation for 32LC2DU

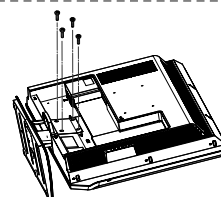
- Carefully place the product screen side down on a cushioned surface that will protect product and screen from damage.



- Place the hook of the stand in the back of the product as shown.

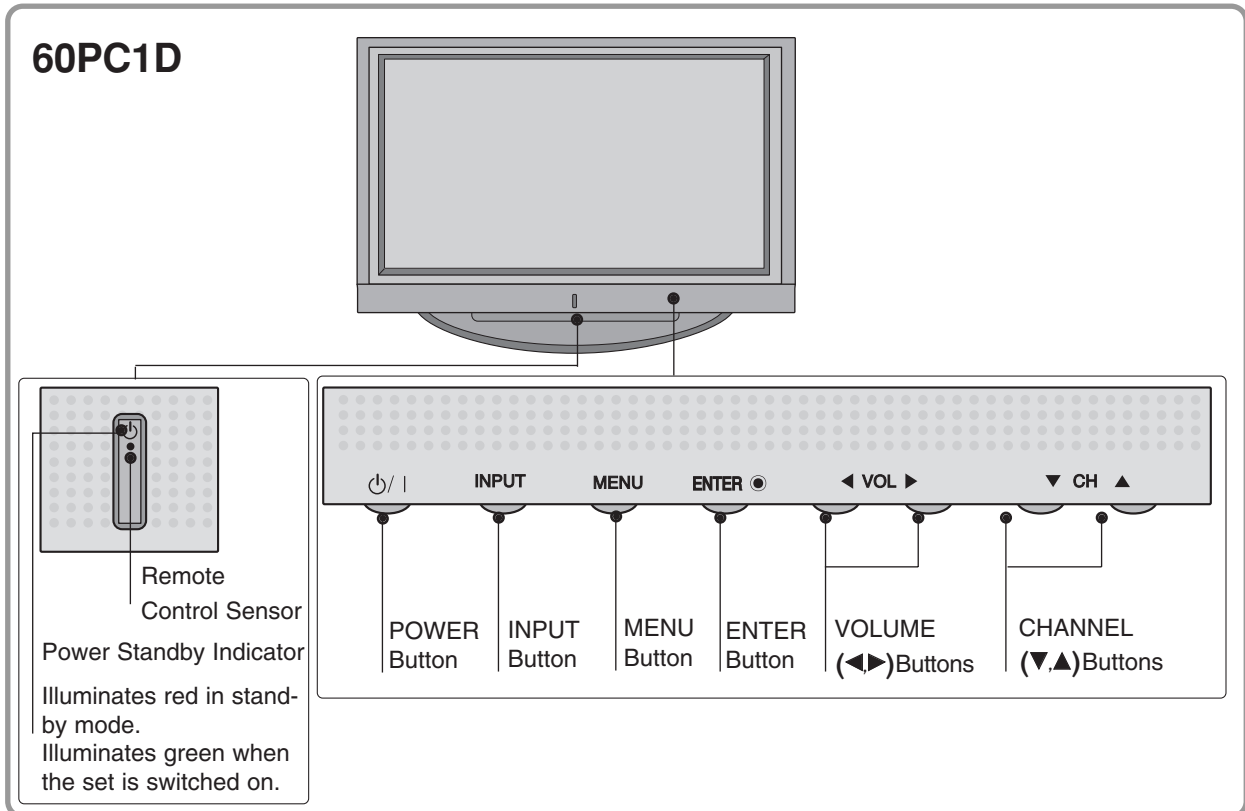
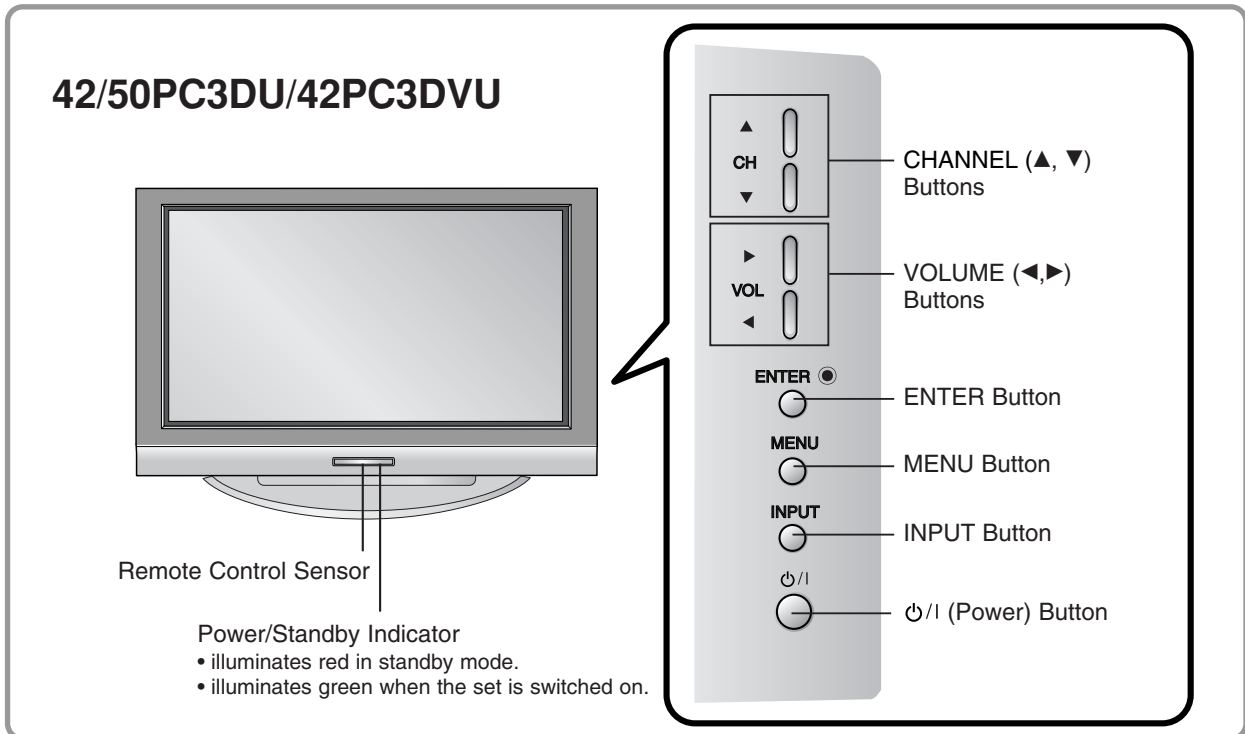


- Install the 4 bolts provided securely, in the back of the product.



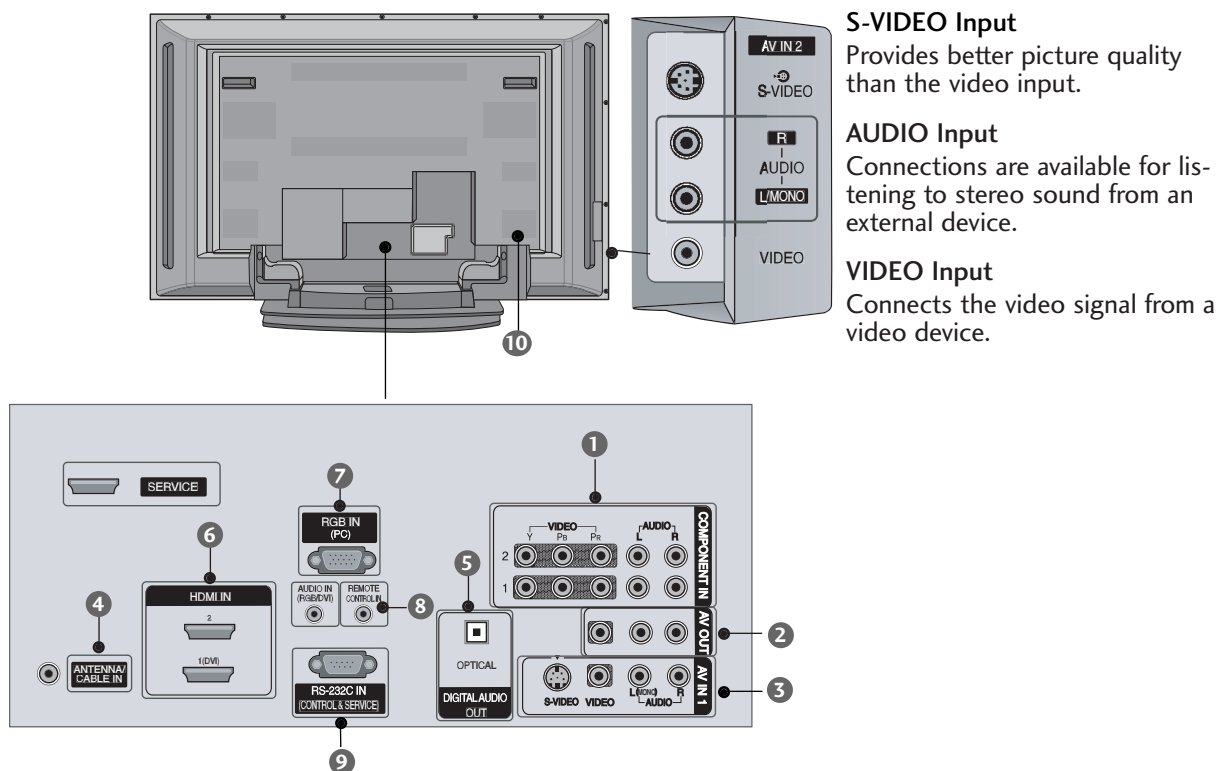
Controls (Model Name: 42PC3DU/3DVU/50PC3DU/60PC1D)

- This is a simplified representation of front panel.
- This picture shown below may be somewhat different from your TV.



Connection Options (Model Name: 42PC3DU/3DVU/50PC3DU/60PC1D)

- This picture shown below may be somewhat different from your TV.



S-VIDEO Input

Provides better picture quality than the video input.

AUDIO Input

Connections are available for listening to stereo sound from an external device.

VIDEO Input

Connects the video signal from a video device.

1 COMPONENT IN

Connect a component video/audio device to these jacks.

2 AV OUT

Connect a second TV or monitor.

3 AV (Audio/Video) IN 1

Connect audio/video output from an external device to these jacks.

S-VIDEO

Connect S-Video out from an S-VIDEO device.

4 ANTENNA/CABLE IN

Connect over-the air signals to this jack.

5 DIGITAL AUDIO OUT

Connect digital audio from various types of equipment.

Note: In standby mode, these ports do not work.

6 HDMI IN

Connect a HDMI signal to 1 (DVI) or 2.

Or DVI (VIDEO) signal to the 1 (DVI) port with a DVI to HDMI cable.

7 RGB IN (PC)

Connect the monitor output from a PC to the appropriate input port.

8 Remote Control Port

Connect your wired remote control.

AUDIO IN (RGB/DVI)

Connect the monitor output from a PC to the appropriate input port.

9 RS-232C IN (CONTROL & SERVICE) PORT

Connect to the RS-232C port on a PC.

10 Power Cord Socket

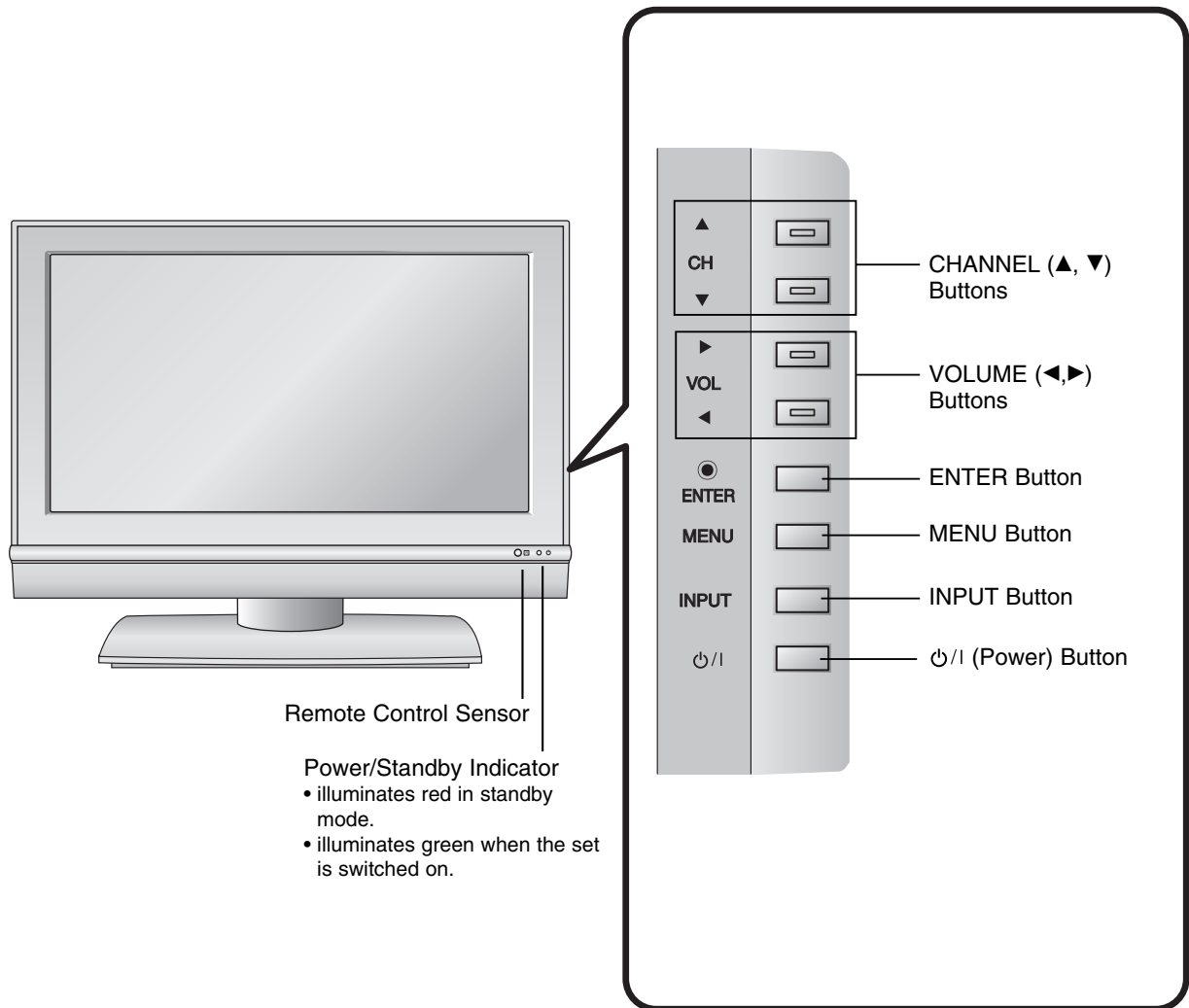
For operation with AC power.

Caution:

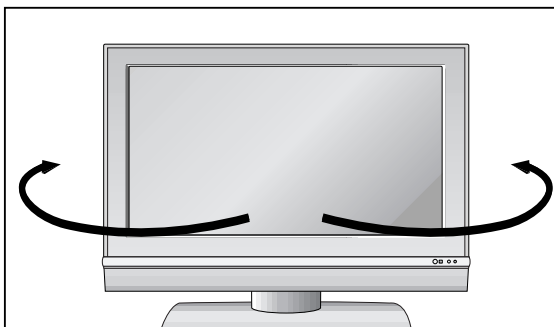
Never attempt to operate the TV on DC power.

Controls (Model Name: 32/37/42LC2DU)

- This is a simplified representation of front panel.
- This picture shown below may be somewhat different from your TV.



Swivel Stand (42LC2DU Only)



- The TV can be conveniently swivelled on its stand 30° to the left or right to provide the optimum viewing angle.