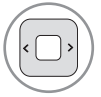


Using Yahoo! TV Widgets



Activate Yahoo! TV Widgets.

- The horizontal list at the bottom of your TV screen is called "**the dock**".
- The items in this list are called "**snippets**".
- A snippet is a shortcut which opens a TV Widget.



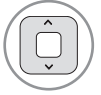
Move between snippets.

- Focus is located in the leftmost region (highlighted in dark red).
- The dock scrolls snippets under this focal point.



Open the **Sidebar** when the TV Widget snippet is in focus.

- The Home button including the main logo is at the top of the sidebar.



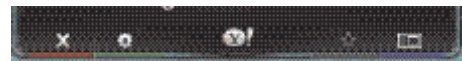
Navigate a menu item.

- The currently focused button is the one highlighted in dark red.



Select the focused button.

The sidebar's bottom toolbar includes four color-coded buttons.



RED	Close the sidebar and return to watching TV.	YELLOW	Add or delete a snippet.
GREEN	Change the widget's settings.	BLUE	Resize video to fit onscreen, or to make it fullscreen.

Using the Profile Widget

- The **Profile Widget** configures your user profile.
- You can set up multiple profiles for multiple users.
- Each profile maintains its own list of TV Widgets.
- The **Switch Profile** menu allows you to switch to a different user profile.
- The **Profile Settings** menu allows you to customize your profile, create a profile PIN, or limit the installation of widgets.
- The **System Settings** menu allows you to change your **Location**, **Repeat the Tutorial**, and **Restore Factory Settings**.
- **Restore Factory Settings** will erase all profiles and widgets installed by users, and restore the original configuration. (See also **NetCast** ➔ **Options** ➔ **Reset Yahoo! Factory Settings**)
- The **Administrative Controls** menu allows you to set the **Screen Saver** timeout, create the **Owner PIN**, and to **Create a Profile**.
- The **Sign in to Yahoo!** menu allows you to personalize your experience using your Yahoo! ID.
- If you don't have a Yahoo! ID yet, please visit <http://www.yahoo.com> to create one.



Using the Widget Gallery

- The **Widget Gallery** allows you to browse and discover new TV Widgets.
- The featured TV Widgets are highlighted in the display case at the top of the sidebar.
- You can also browse available TV Widgets by category.
- To install a widget, select **Add Widget to My Profile** and press the ENTER button.
- The **Owner PIN** is needed to install widgets for profiles that have been protected through the **Limit Profile** indicator under **Profile Widget** ➔ **Profile Settings**.
- Go to the **Profile Widget** ➔ **Administrative Controls** menu to set or change the **Owner PIN**.



Using the Yahoo! News Widget

- The **Yahoo! News Widget** provides the latest headline news for business, entertainment, politics, sports, top stories, and many other categories.
- Select a category, press **ENTER**.
- Select a headline within the category, press **ENTER**.
- View the dynamically updated news summary for the selected headline.



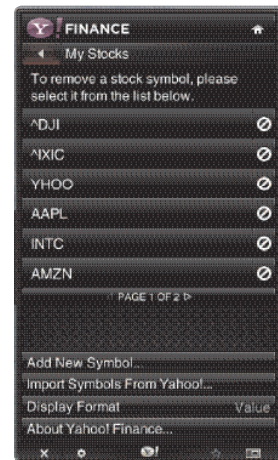
Using the Yahoo! Weather Widget

- The **Yahoo! Weather Widget** provides updates on your local and favorite weather locations with content that dynamically changes with weather conditions.
- Press the **GREEN** button to display the **Settings** menu.
- From the **Settings** menu you can add or remove a city for which you want to view weather information.
 - **Add a New City** by entering the name of the city. Once the search results are displayed, select the city you want and press **ENTER** button.
 - **Delete a City** by selecting the city you want to delete from the city list. Press **ENTER** button and confirm the deletion.
 - Select the Display Units As button to change the temperature indication mode to **Imperial** or **Metric**. **Imperial** will show temperatures in Fahrenheit and **Metric** will use Celsius.
- To create a snippet for a favorite city:
 - Select the city from the home page and view the detailed weather information.
 - Press the **YELLOW** button.
 - Select the **Add Snippet** button and press **ENTER** to add the city as a snippet.
- To delete a snippet for a city:
 - Navigate to the snippet and press **ENTER** button to start the widget. The detailed page for the snippet's city will be displayed.
 - Press the **YELLOW** button.
 - Select the Delete Snippet button and press **ENTER** button to remove the snippet.



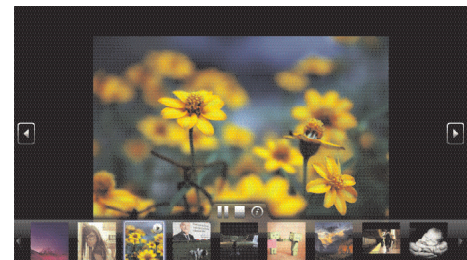
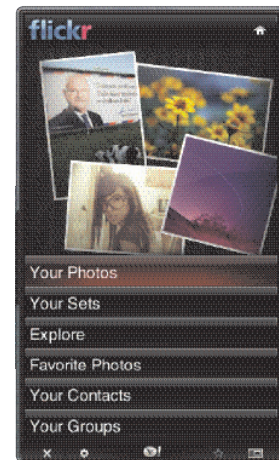
Using the Yahoo! Finance Widget

- View stock information and the latest stock news with the Yahoo! Finance Widget.
- Press the **GREEN** button to set up your stocks.
 - Use the **Add New Symbol** menu to enter the name of a new stock.
 - Select the stock you want to add from the search results and select the **Add Symbol** button and press **ENTER** button.
 - The selected stock is added to the **My Stocks** list.
 - The **Import Symbols From Yahoo!** menu retrieves the stocks from your Yahoo! Finance portfolio.
 - The **Merge Symbols** button merges the symbols in the Yahoo! Finance Widget with the symbols from your portfolio.
 - The **Replace Symbols** button deletes the symbols in the Yahoo! Finance Widget and replaces them with the symbols from your portfolio.
 - The **Display Format** button changes the stock-price fluctuation transition to **Value** or **Percentage**.
- To create a snippet for a favorite stock:
 - Select the stock symbol from the home page and view the detailed finance information.
 - Press the **YELLOW** button.
 - Select the **Add Snippet** button and press **ENTER** button to add the stock as a snippet.
- To delete a snippet:
 - Navigate to the snippet and press **ENTER** button to start widget. The detailed page for the snippet's stock will be displayed.
 - Press the **YELLOW** button.
 - Select the **Delete Snippet** button and press **ENTER** button to remove the snippet.



Using the flickr Widget

- The **flickr Widget** provides a television-viewing experience while watching slideshows of family and friends' photos.
- Personalize the **flickr Widget** by logging in with your Yahoo! ID. Refer to **Using the Profile Widget** for instructions.
- The **Your Photos** menu shows photos you have registered with the flickr website.
- The **Your Sets** menu allows you to view photos you have classified in flickr.
- The **Explore** menu allows you to explore photos featured by the flickr website.
- The **Mark as Favorite** moves photos to your **Favorite Photos** set.
- The **Favorite Photos** menu allows you to see the photos you have classified as favorites.
- The **Your Contacts** menu allows you to see updates from family and friends.
- The **Your Groups** menu allows you to select your favorite groups from the flickr website <http://www.flickr.com> to share and enjoy photos with the flickr community of users.
- To view photos in a slideshow:
 - Select a thumbnail of a photo and press **ENTER** button to view the photo's details.
 - Select **Start Slideshow** and press **ENTER** button.
- To control the slideshow display:
 - Press **ENTER** button during a slideshow.
 - The thumbnails of photos are displayed on the bottom of the screen.
 - When the slideshow control is displayed, you can **Pause**, **Play**, and **Stop** the slideshow.
 - If you select the **INFO** button and press **ENTER** button, you can view details for the selected photo.
- To configure the **Settings**, press the **GREEN** button.
 - The **Time Per Slide** button controls the speed of the slideshow.
 - The **Repeat** button will restart the slideshow at the beginning after the last photo is shown.



NOTE

- ▶ To get the the best picture quality, adjust the PC graphics card to **1920x1080**.
- ▶ Depending on the graphics card, DOS mode may not work if a HDMI to DVI Cable is in use.
- ▶ In PC mode, there may be noise associated with the resolution, vertical pattern, contrast or brightness. If noise is present, change the PC output to another resolution, change the refresh rate to another rate or adjust the brightness and contrast on the PICTURE menu until the picture is clear.
- ▶ Avoid keeping a fixed image on the screen for a long period of time. The fixed image may become permanently imprinted on the screen.
- ▶ The synchronization input form for Horizontal and Vertical frequencies is separate.
- ▶ Depending on the graphics card, some resolution settings may not allow the image to be positioned on the screen properly.
- ▶ If there are overscan in HDMI-PC 1920x1080, change aspect ratio to **Just scan**.
- ▶ When selecting HDMI-PC, set the "Input Label - PC" in the OPTION menu.

Supported Display Specifications (RGB-PC, HDMI-PC)

Resolution	Horizontal Frequency(KHz)	Vertical Frequency(KHz)
640x350	31.468	70.09
720x400	31.469	70.08
640x480	31.469	59.94
800x600	37.879	60.31
1024x768	48.363	60.00
1280x768	47.776	59.87
1360x768	47.712	60.015
1280x1024	63.981	60.02
1600x1200	75.00	60.00
1920x1080 RGB-PC	66.587	59.934
1920x1080 HDMI-PC	67.50	60.00

MODELS		50PK750 (50PK750-UA)	60PK750 (60PK750-UA)
Dimensions (Width x Height x Depth)	With stand		55.2 x 36.8 x 15.1 inches 1402.8 X 935.3 X 383.9mm
	Without stand		55.2 x 34.1 x 2.0 inches 1402.8 X 866.8 X 52.4mm
Weight	With stand		104.0 lbs / 47.2 kg
	Without stand		94.1 lbs / 42.7 kg

Power requirement	AC100-240V ~ 50/60Hz	
Television System	NTSC-M, ATSC, 64 & 256 QAM	
Program Coverage	VHF 2-13, UHF 14-69, CATV 1-135, DTV 2-69, CADTV 1-135	
External Antenna Impedance	75 ohm	
Environment condition	Operating Temperature	32 ~ 104°F (0 ~ 40°C)
	Operating Humidity	Less than 80%
	Storage Temperature	-4 ~ 140°F (-20 ~ 60°C)
	Storage Humidity	Less than 85%

- The specifications shown above may be changed without prior notice for quality improvement.