



WIRELESS GATEWAY

USER'S MANUAL

Please read this manual carefully before using the product.



⚠ WARNING / ADVERTENCIA / ACHTUNG / UYARI / AVERTISSEMENT / ОСТОРОЖНО!

- Violation of warnings may lead to serious injury or death.
- Use the rated power. • Turn power off before installing the product. • Do not install the product near a fire.
- Do not expose the product to water.
- Hacer caso omiso de las advertencias puede provocar lesiones graves o incluso la muerte.
- Utilice la potencia nominal. • Apague el suministro eléctrico antes de instalar el producto.
- No instale el producto cerca de un fuego. • No someta el producto al agua.
- Bei Missachtung der Warnhinweise besteht die Gefahr von schwerwiegenden Verletzungen oder Lebensgefahr.
- Nutzen Sie die Nennleistung. • Vor der Installation des Produkts Strom abschalten.
- Installieren Sie das Produkt nicht in der Nähe von Feuer. • Setzen Sie das Produkt nicht Wasser aus.
- Hazer caso omiso de las advertencias puede provocar lesiones graves o incluso la muerte.
- Utilice la potencia nominal. • Apague el suministro eléctrico antes de instalar el producto.
- No instale el producto cerca de un fuego. • No someta el producto al agua.
- Bei Missachtung der Warnhinweise besteht die Gefahr von schwerwiegenden Verletzungen oder Lebensgefahr.
- Nutzen Sie die Nennleistung. • Vor der Installation des Produkts Strom abschalten.
- Installieren Sie das Produkt nicht in der Nähe von Feuer. • Setzen Sie das Produkt nicht Wasser aus.
- Hazer caso omiso de las advertencias puede provocar lesiones graves o incluso la muerte.
- Utilice la potencia nominal. • Apague el suministro eléctrico antes de instalar el producto.
- No instale el producto cerca de un fuego. • No someta el producto al agua.
- Le non-respect des avertissements peut entraîner des blessures graves ou la mort.
- Utilisez la puissance nominale. • Débranchez l'alimentation avant d'installer le produit.
- Ne pas installer le produit près d'une source de chaleur. • N'exposez pas le produit à l'eau.
- Несоблюдение данных указаний может привести к тяжелой телесной повредению или летальному исходу.
- Используйте номинальную мощность. • Перед установкой выключите питание устройств.
- Не устанавливайте изделие вблизи источника огня. • Не подвергайте изделие воздействию воды.

⚠ CAUTION / PRECAUCIÓN / VORSICHT / DIKKAT / ATTENTION / ВНИМАНИЕ!

- Violation of precautions may lead to light injury or product damage.
- Do not install on an uneven surface. • Do not disassemble or deform. • Do not install nearby inflammable materials.
- Do not expose to direct sunlight or moisture.
- Hacer caso omiso de las advertencias puede provocar lesiones graves o incluso la muerte.
- No instale el producto en una superficie desigual. • No lo desmonte ni lo deforme.
- No lo instale cerca de materiales inflamables. • No lo exponga a la luz solar directa o a la humedad.
- Bei Missachtung der Vorsichtshinweise besteht die Gefahr von leichten Verletzungen oder Schäden am Gerät.
- Installieren Sie das nicht ebenen Oberfläche. • Nicht zerlegen oder verbiegen.
- Nicht in der Nähe brennbarer Stoffe installieren. • Vor direktem Sonnenlicht und Feuchtigkeit schützen.
- Önlemliğin ihlal edilmesi hafif yaralanmalara veya ürün hasarına neden olabilir.
- Dengesiz bir yüzeye kurmayın. • Demonte etmeyin veya deforme etmeyin. • Yanıcı maddelerin yanına monte etmeyin.
- Doğru yan güven yüzüne veya nemli yüzeye kurmayın.
- Le non-respect des consignes de sécurité peut entraîner de blessures légères ou endommager le produit.
- Utilisez la puissance nominale. • Arrêtez le produit avant de l'installer.
- No installe el producto cerca de fuego. • No someta el producto al agua.
- Le non-respect des avertissements peut entraîner des blessures graves ou la mort.
- Installez le produit sur une surface plane. • Ne pas démonter ou déformer le produit.
- Ne pas installer le produit à proximité de matériaux inflammables.
- Ne pas exposer le produit directement à la lumière du soleil ni à la moisissure.
- Несоблюдение данных указаний может привести к легкому телесному повреждению или поломке изделия.
- Не устанавливайте изделие на неровной поверхности. • Не разбирайте устройство и не изменяйте его форму.
- Не устанавливайте устройство вблизи легковоспламеняющихся объектов.
- Не подвергайте устройство прямому попаданию солнечного света или влаги.

● Troubleshooting / Solución de problemas / Störungsbehebung / Sorun giderme / Dépannage / Устранение неполадок

- The Power LED do not turn on :
Check whether the DC cable is properly connected to both the gateway and the adapter.
• Das Netz-LED ist nicht eingeschaltet :
Überprüfen Sie, ob das DC-Kabel ordnungsgemäß mit sowohl dem Gateway als auch dem Adapter verbunden ist.
• Le voyant DEL d'alimentation ne s'allume pas :
Vérifiez que le câble CC est correctement connecté à la passerelle et à l'adaptateur.
- The LAN LED do not turn on : Check whether the LAN cable is properly connected.
• Das LAN-LED ist nicht eingeschaltet : Überprüfen Sie, ob das LAN-Kabel ordnungsgemäß verbunden ist.
• Le voyant DEL réseau ne s'allume pas : Vérifiez que le câble réseau est correctement connecté.
- The Wireless communication LED blinks too fast :
Contact the service center or dealer that you purchased this product.
• Das LED für die drahtlose Kommunikation blinkt zu schnell :
Kontaktieren Sie das Service Center oder den Händler, von dem Sie dieses Produkt gekauft haben.
• Le voyant DEL de communication sans fil clignote trop rapidement :
Contactez le centre de service ou le revendeur auprès duquel vous avez acheté ce produit.

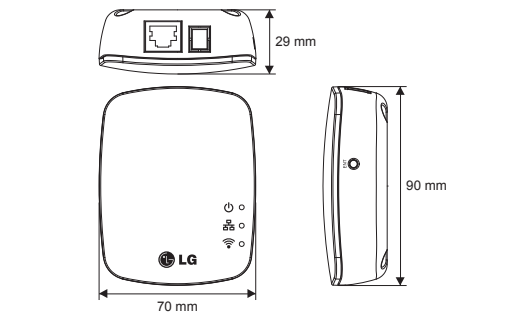
● Specifications / Especificaciones / Technische Daten / Speşifikasyonlar / Caractéristiques / Технические характеристики

EN	Frequency	2405.0 ~ 2480.0 MHz
	Wireless range	line of sight 98 ft (30 m)
	Operating voltage	5 V DC (from the adapter)
	Current consumption	Max. 400 mA
	Operating temperature	-20 ~ +50°C
	Operating condition	For Indoor use only
	Weight	75 g
	Dimensions (WHD)	2.8"×3.5"×1.1" (70 mm × 90 mm × 29 mm)

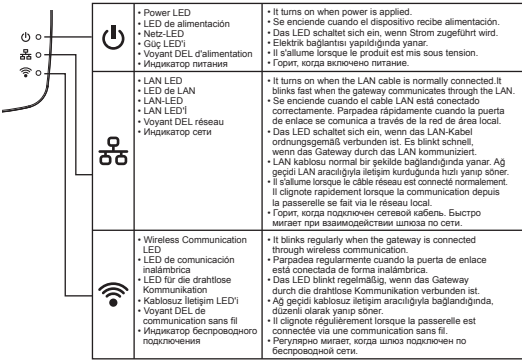
ES	Frecuencia	2405.0~2480.0 MHz
	Rango inalámbrico	Campo visual 30 m
	Tensión de alimentación	5 V DC (Desde un adaptador.)
	Consumo energético	Máx. 400 mA
	Temperatura de funcionamiento	de -20 a 50°C
	Condiciones de uso	Uso exclusivo en interior
	Peso	75 g
	Dimensiones (Alt-An-Pr)	70 mm x 90 mm x 29 mm

DE	Frequenz	2.405,0-2.480,0 MHz
	Funkreichweite	30 m bei Sichtverbindung
	Betriebsspannung	5 V DC (Von einem Adapter.)
	Stromaufnahme	max. 400 mA
	Betriebstemperatur	-20 bis 50°C
	Einsatzbereich	Nur für den Einsatz in Innenräumen
	Gewicht	75 g
	Abmessungen (BHT)	70 mm x 90 mm x 29 mm

● Dimensions / Dimensiones / Abmessungen / Boyutlar / Димензио / Размеры



● LED Operations / Funcionamiento del LED / LED-Anzeige / LED İşlemli / Fonctionnement des LED / Состояния индикатора



● Troubleshooting / Solución de problemas / Störungsbehebung / Sorun giderme / Dépannage / Устранение неполадок

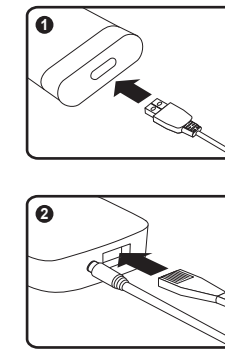
- El LED de alimentación no se enciende :
Compruebe que el cable de CC está correctamente conectado a la puerta de enlace y al adaptador.
• Güç LED'i yanmıyor : DC kablosunun hem ağ geçidine hem de adaptöre düzgün bağlandığından emin olun.
• Не горит индикатор питания. : Проверьте, правильно ли подключен кабель постоянного тока к шлюзу и адаптеру.
- El LED de LAN no se enciende : Compruebe que el cable LAN está correctamente conectado.
• Güç LED'i yanmıyor : LAN kablosunun düzgün bağlandığından emin olun.
• Не горит сетевой индикатор. : Проверьте, правильно ли подключен сетевой кабель.
- El LED de comunicación inalámbrica parpadea demasiado rápido :
Póngase en contacto con el centro de atención al cliente o con la tienda donde adquirió el producto.
• Kablosuz iletişim LED'i çok hızlı yanıp söner : Servis merkezine ya da ürünü satın aldığınız bayi ile iletişime kurun.
• Индикатор беспроводного подключения мигает слишком быстро :
Обратитесь в сервисный центр или к продавцу, у которого приобрели изделие.

TR	Frekans	2405.0-2480.0 MHz
	Kablosuz aralığı	Görüş hattı 98 ft (30 m)
	Çalışma gerilimi	5 V DC (Bir adaptörden.)
	Akım tüketimi	Maks. 400 mA
	Çalışma sıcaklığı	-4 ila 122°F (-20 ila 50°C)
	Çalışma koşulları	Sadece Kapalı alanda kullanıma uygeldir
	Ağırlık	3.4 oz (75 g)
	Boyutlar (GYD)	2.8"×3.5"×1.1" (70 mm x 90 mm x 29 mm)

FR	Fréquence	2405.0-2480.0 MHz
	Portée optique : 30 m (98 ft)	
	Tension de fonctionnement	5 V CC (À partir d'un adaptateur.)
	Consommation électrique	Max. 400 mA
	Température de fonctionnement	de -20 à 50°C (-4 à 122°F)
	Conditions de fonctionnement	Pour utilisation en intérieur uniquement
	Poids	75 g (3,4 oz)
	Dimensions (LxHxP)	70 mm x 90 mm x 29 mm (2,8" x 3,5" x 1,1")

RU	Частота	2405,0-2480,0 МГц
	Диапазон действия	30 м в пределах прямой видимости
	Рабочее напряжение	5 В постоянного тока (От адаптера.)
	Потребление тока	Макс. 400 мА
	Рабочая температура	-20 — 50°C
	Условия эксплуатации	Только в помещении
	Вес	75 г
	Размеры (ширина, высота, длина)	70 x 90 x 29 мм

● Installation / Instalación / Montage / Kurulum / Installatıo / Устаноика



- EN Connect the DC cable to the adapter.
ES Conecte el cable de CC al adaptador.
DE Verbinden Sie das DC-Kabel mit dem Adapter.
TR DC kablosunu adaptöre bağlayın.
FR Branchez le câble CC à l'adaptateur.
RU Подключите кабель постоянного тока к адаптеру.
- EN Connect the DC adapter to gateway.
As needed, connect LAN cable to gateway.
ES Conecte el adaptador de CC a la puerta de enlace. Si lo necesita, conecte el cable LAN a la puerta de enlace.
DE Verbinden Sie das DC-Kabel mit dem Gateway.
Wenn erforderlich, verbinden Sie das LAN-Kabel mit dem Gateway.
TR DC adaptörünü ağ geçidine bağlayın. Gerekiirse, ağ geçidine LAN kablosu bağlayın.
FR Branchez l'adaptateur CC à la passerelle. Branchez le câble réseau à la passerelle, si nécessaire.
RU Подключите адаптер постоянного тока к шлюзу. При необходимости подключите сетевой кабель к шлюзу.
- EN Place the gateway on the proper place and make connect power. Ensure the Power LED is on.
ES Sitúe la puerta de enlace en un lugar adecuado y conecte la alimentación. Asegúrese de que el LED de alimentación está encendido.
DE Platzieren Sie das Gateway auf einer angemessenen Oberfläche und verbinden Sie es mit dem Stromnetz. Versichern Sie sich, dass die Netz-LED eingeschaltet ist.
TR Ağ geçidini uygun bir yere koyun ve elektrik bağlantısını yapın. Güç LED'inin açık olduğundan emin olun.
FR Placez la passerelle à un endroit adéquat et branchez l'alimentation. Vérifiez que le voyant d'alimentation est allumé.
RU Установите шлюз в подходящем месте и включите питание. Убедитесь, что горит индикатор питания.

※ FCC is applied only for some models. Please check the model name on the table and product label.

Model name	9GW97185D3
FCC ID	BEJ9GW97185D3

● Federal Communications Commission (FCC) Statement

You are cautioned that changes or modifications not expressly approved by the part responsible for compliance could void the user's authority to operate the equipment. This equipment has been tested and found to comply with the limits for a Class B digital device, pursuant to part 15 of the FCC rules. These limits are designed to provide reasonable protection against harmful interference in a residential installation. This equipment generates, uses and can radiate radio frequency energy and, if not installed and used in accordance with the instructions, may cause harmful interference to radio communications. However, there is no guarantee that interference will not occur in a particular installation. If this equipment does cause harmful interference to radio or television reception, which can be determined by turning the equipment off and on, the user is encouraged to try to correct the interference by one or more of the following measures:

- Reorient or relocate the receiving antenna.
- Increase the separation between the equipment and receiver.
- Connect the equipment into an outlet on a circuit different from that to which the receiver is connected.
- Consult the dealer or an experienced radio/TV technician for help.

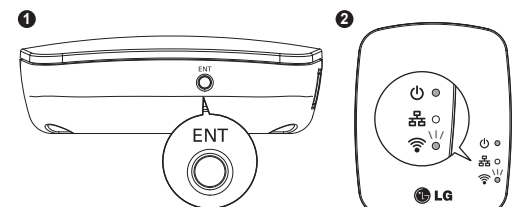
This device complies with Part 15 of the FCC Rules. Operation is subject to the following two conditions:
1) this device may not cause harmful interference, and
2) this device must accept any interference received, including interference that may cause undesired operation of the device of the device.

FCC Caution
Any changes or modifications not expressly approved by the party responsible for compliance could void the user's authority to operate this equipment and For indoor use only, use outdoors or in other modes not covered by this manual may violate the FCC regulation and violate the user authority to use the product.

FCC RF Radiation Exposure Statement
This equipment complies with FCC radiation exposure limits set forth for an uncontrolled environment. End users must follow the specific operating instructions for satisfying RF exposure compliance.

Equipment used at position in which the spaces between human body and antenna exceeded 20 cm

※ Note : Initialization / Nota : Inicialización / Hinweis: Initialisierung / Not : Başlatma / Remarque : Initialisation / Примечание: инициализация



- EN 1. Press and hold the reset button for over 5 seconds to reset the product.
2. Release the button when the wireless communication LED blinks faster.
- ES 1. Presiones y mantenga el botón de reinicio durante más de 5 segundos para reiniciar el producto.
2. Suelte el botón cuando el LED de comunicación inalámbrica parpadee más rápidamente.
- DE 1. Drücken und halten Sie den Reset-Knopf mindestens 5 Sekunden, um das Produkt zurückzusetzen.
2. Lassen Sie den Knopf los, wenn das LED für die drahtlose Kommunikation schneller blinkt.
- TR 1. Ürünü sıfırlamak için, sıfırlama düğmesine 5 saniye boyunca basılı tutun.
2. Kablosuz iletişim LED'i hızlı yanıp sönmeye başladığından düğmeyi bırakın.
- FR 1. Maintenez le bouton de réinitialisation enfoncé pendant plus de 5 secondes pour réinitialiser le produit.
2. Relâchez le bouton lorsque le voyant de communication sans fil se met à clignoter plus rapidement.
- RU 1. Нажмите и удерживайте кнопку сброса в течение более 5 секунд, чтобы сбросить настройки изделия.
2. Отпустите кнопку, когда индикатор беспроводного подключения начнет мигать быстрее.

● WEEE Disposal of your old appliance

1. All electrical and electronic products shall be disposed of separately from the municipal waste stream via designated collection facilities appointed by the government or the local authorities.
2. The correct disposal of your old appliance will help prevent potential negative consequences for the environment and human health.
3. For more detailed information about disposal of your old appliance, please contact your city office, waste disposal service or the shop where you purchased the product.

EEE Yönetmelğine Uygundan

※ For more information on safe recycling of this product, please visit <http://www.lg.com/global/sustainability/environment/take-back-recycling>

Символ «не для пищевой продукции» применяется в соответствии с техническим регламентом Таможенного союза «О безопасности упаковки» 005/2011 и указывает на то, что упаковка данного продукта не предназначена для повторного использования и подлежит утилизации. Упаковку данного продукта запрещается использовать для хранения пищевой продукции.

Символ «пелла Мебиуса» указывает на возможность утилизации упаковки. Символ может быть дополнен обозначением материала упаковки в виде цифрового и/или буквенного обозначения.



CE Conformity Notice :

CE 1588

ENGLISH Declaration of Conformity

Hereby, LG Electronics European Shared Service Center B.V., declares that this Wireless gateway is compliant with the essential requirements and other relevant provisions of Directive 1999/5/EC. The complete Declaration of Conformity may be requested through the following postal address :
LG Electronics European Shared Service Center B.V. European Standard Team Krijgsman 1, 1186 DM Amstelveen The Netherlands
or can be requested at our dedicated DoC website :
http://www.lg.com/global/support/cedoc/cedoc#
This device is a 2.4 GHz wideband transmission system, intended for use in all EU member states and EFTA countries.

DEUTSCH Konformitätserklärung

Hiermit erklärt das LG Electronics European Shared Service Center B.V., dass dieses Wireless gateway den grundlegenden Anforderungen und anderen relevanten Bestimmungen der Richtlinie 1999/5/EG entspricht. Die vollständige Konformitätserklärung kann über folgende Postadresse angefordert werden:
LG Electronics European Shared Service Center B.V. European Standard Team Krijgsman 1, 1186 DM Amstelveen The Netherlands
Sie kann auch über unsere entsprechende Website angefordert werden :
http://www.lg.com/global/support/cedoc/cedoc#
Dieses Gerät ist ein 2,4 GHz Breitband-Übermittlungssystem, das für den Gebrauch in allen EU-Mitgliedsstaaten und EFTA-Ländern bestimmt ist.

FRANÇAIS Déclaration de conformité

Par la présente, LG Electronics European Shared Service Center B.V. déclare que ce Wireless gateway est conforme aux exigences essentielles et autres dispositions pertinentes de la directive 1999/5/CE. La déclaration de conformité complète peut être demandée via l'adresse postale suivante :
LG Electronics European Shared Service Center B.V. European Standard Team Krijgsman 1, 1186 DM Amstelveen The Netherlands
Vous pouvez également en faire la demande sur notre site web dédié à la documentation :
http://www.lg.com/global/support/cedoc/cedoc#
Ce périphérique est un système de transmission large bande 2,4 GHz, conçu pour une utilisation dans tous les états membres de l'Union européenne et e l'Association européenne de libre-échange.

DANSK Overensstemmelseserklæring

Center B.V. erklærer hermed, at denne Wireless gateway overholder de vigtigste krav og andre relevante bestemmelser i direktiv 1999/5/EC. Du kan anmode om den fulde overensstemmelse-serklæring via følgende postadresse :
LG Electronics European Shared Service Center B.V. European Standard Team Krijgsman 1, 1186 DM Amstelveen The Netherlands
eller via vores dedikere websted :
http://www.lg.com/global/support/cedoc/cedoc#
Denne enhed er et 2,4 GHz bredbåndstransmissionssystem beregnet til brug i alle EU-medlemslande og EFTA-lande.

SUOMI Vaatimustenmukaisuusvakuutus

LG Electronics European Shared Service Center B.V. vakuuttaa, että tämä Wireless gateway on direktiivin 1999/5/EY keskeisten vaatimusten ja muiden olennaisten säännösten mukainen. Vaatimustenmukai-suusvakuutuksen koko tekstiä voi pyytää seuraavasta postiosoitteesta :
LG Electronics European Shared Service Center B.V. European Standard Team Krijgsman 1, 1186 DM Amstelveen The Netherlands
Valitsoehtoisesti sen voi pyytää vaatimustenmukaisuustietojen sivuston kautta :
http://www.lg.com/global/support/cedoc/cedoc#
Tämä laite on 2,4 GHz laajakaistaninen lähetysjärjestelmä, joka on tarkoitettu käytettäväksi kaikissa EU:n jäsenvaltioissa ja EFTA-maissa.

EESTI Vastavusdeklaratsioon

Ettevõtte LG Electronics European Shared Service Center B.V. tunnistab siinkohal käesoleva Wireless gateway vastavust direktiivi 1999/5/EÜ põhinõuetele ja teistele asjaomastele sätetele. Tervikliku vastavusdeklaratsiooni saamiseks võtke ühendust järgmisel postiaadressil.
LG Electronics European Shared Service Center B.V. European Standard Team Krijgsman 1, 1186 DM Amstelveen The Netherlands
või siis küsige seda meie vastavusdeklaratsiooni veebilehelt :
http://www.lg.com/global/support/cedoc/cedoc#
See seade on 2,4 GHz lairiba-edastussüsteem, mis on mõeldud kasutamiseks kõigis EL-i liikmesriikides ja EFTA riikides.

LIETUVIŲ K. Atitikties deklaracija

Šiuo dokumentu, LG Electronics European Shared Service Center B.V. pareškia, kad šis Wireless gateway atitinka esminius reikalavimus ir kitas atitinkamas nuostatas, pateiktas 1999/5/EB direktyvoje. Visos atitikties deklaracijos galima pagaiduoti šiuo pašto adresu :
LG Electronics European Shared Service Center B.V. European Standard Team Krijgsman 1, 1186 DM Amstelveen The Netherlands
taip pat j galite rasti mūsų paskirtoje DoC internetinėje svetainėje :
http://www.lg.com/global/support/cedoc/cedoc#
Šis įrenginys – tai 2,4 GHz plačiajuoste duomenų perdavimo sistema, skirta naudoti visose ES ir ELPA šalyse.

ESPAÑOL Declaración de conformidad

Por la presente, LG Electronics European Shared Service Center B.V., declara que este Wireless gateway cumple los requisitos imprescindibles y cualquier otra disposición relevante de la directiva 1999/5/CE. La Declaración de conformidad completa se puede solicitar a la siguiente dirección postal :
LG Electronics European Shared Service Center B.V. European Standard Team Krijgsman 1, 1186 DM Amstelveen The Netherlands
o se puede consultar en nuestro sitio web específico :
http://www.lg.com/global/support/cedoc/cedoc#
Este dispositivo es un sistema de transmisión de banda ancha de 2,4 GHz previsto para su uso en todos los estados miembros de la UE y en los países de la AELC.

PORTUGUÊS Declaração de conformidade

Pelo presente documento, a LG Electronics European Shared Service Center B.V. declara que este Wireless gateway se encontra em conformidade com os requisitos essenciais e outras disposições relevantes da diretiva 1999/5/CE. É possível solicitar a Declaração de conformidade completa através do endereço postal que se segue :
LG Electronics European Shared Service Center B.V. European Standard Team Krijgsman 1, 1186 DM Amstelveen The Netherlands
Em alternativa, é possível solicitá-la no nosso website específico para Declarações de conformidade :
http://www.lg.com/global/support/cedoc/cedoc#
Este dispositivo é um sistema de transmissão de banda larga de 2,4 GHz e destina-se ao uso em todos os estados-membros da UE e países da EFTA.

NEDERLANDS Conformiteitsverklaring

Hierbij verklaart LG Electronics European Shared Service Center B.V. dat deze Wireless gateway aan de essentiële vereisten en andere relevante bepalingen van Richtlijn 1999/5/EG voldoet. U kunt de volledige conformiteitsverklaring via het volgende postadres opvragen :
LG Electronics European Shared Service Center B.V. European Standard Team Krijgsman 1, 1186 DM Amstelveen The Netherlands
of u kunt deze via onze speciale DoC-website opvragen op :
http://www.lg.com/global/support/cedoc/cedoc#
Dit apparaat is een breedband overdrachtsysteem van 2,4 GHz, bedoeld voor gebruik in alle lidstaten van de EU en alle EVA-landen.

ΕΛΛΗΝΙΚΑ Δήλωση συμμόρφωσης

Με το παρόν η LG Electronics European Shared Service Center B.V. δηλώνει ότι αυτό το Wireless gateway συμμόρφωκετα με τις ουσιώδεις απαιτήσεις και άλλες σχετικές διατάξεις της Οδηγίας 1999/5/ΕΚ. Μπορείτε να ζητήσετε την πλήρη Δήλωση συμμόρφωσης μέσω της παρακάτω ταχυδρομικής διεύθυνσης :
LG Electronics European Shared Service Center B.V. European Standard Team Krijgsman 1, 1186 DM Amstelveen The Netherlands
ή μπορείτε να την ζητήσετε από την αποκλειστική τοποθεσία web Δήλωσης συμμόρφωσης :
http://www.lg.com/global/support/cedoc/cedoc#
Αυτή η συσκευή είναι ένα σύστημα διάδοσης ευρείας κλίμακας 2,4 GHz που προορίζεται για χρήση σε όλα τα κράτη μέλη της Ευρωπαϊκής Ένωσης και τις χώρες της Ευρωπαϊκής Ζώνης Ελευθέρων Συναλλαγών.

LATVIEŠU Atbilstības deklarācija

Ar šo LG Electronics European Shared Service Center B.V. paziņo, ka šis Wireless gateway atbilst Direktīvas 1999/5/EK būtiskajām prasībām un citiem saistītiem noteikumiem. Pilnu Atbilstības deklarāciju varat pieprasīt, izmantojot šādu pasta adresi :
LG Electronics European Shared Service Center B.V. European Standard Team Krijgsman 1, 1186 DM Amstelveen The Netherlands
vai mūsu speciāli izveidotajā Atbilstības deklarācijas tīmekļa vietnē :
http://www.lg.com/global/support/cedoc/cedoc#
Šīierīce ir 2,4 GHz plaīzjasla pārraīžu sistēma, kas paredzēta izmantošanai visās ES dalībvalstīs un EBTA valstīs.

SLOVENŠČINA Izjava o skladnosti

Izjava o skladnosti LG Electronics European Shared Service Center B.V. izjavlja, da je ta Wireless gateway v skladu z bistvenimi zahtevami in drugim isteznimi določili direktive 1999/5/ES. Če želite celotno izjavo o skladnosti, pišite na poštni naslov :
LG Electronics European Shared Service Center B.V. European Standard Team Krijgsman 1, 1186 DM Amstelveen The Netherlands
ali jo zahtevajte na našem spletnem mestu, namenjenem izjavi o skladnosti :
http://www.lg.com/global/support/cedoc/cedoc#
Ta naprava je 2,4 GHz sistem za širokopasovni prenos, namenjena za uporabo v vseh državah članicah EU in EFTA.

BOSANSKI Izjava o usklađenosti

Kompanija LG Electronics European Shared Service Center B.V. ovim izjavljuje da je Wireless gateway usklađen sa suštinskim zahtevima i ostalim relevantnim propisima Direktive 1999/5/EZ. Celu Izjavu o usklađenosti možete zatražiti na sledećoj poštanskoj adresi :
LG Electronics European Shared Service Center B.V. European Standard Team Krijgsman 1, 1186 DM Amstelveen The Netherlands
ili je možete zatražiti na našoj namenskoj web-lokaciji :
http://www.lg.com/global/support/cedoc/cedoc#
Ovaj uređaj je širokopojasni sistem za prenos na frekvenciji od 2,4 GHz, namenjen za korišćenje u svim državama članicama EU i EFTA.

HRVATSKI Deklaracija o sukladnosti

Tvrtka LG Electronics European Shared Service Center B.V. ovim putem izjavljuje da je ovaj Wireless gateway sukladan svim osnovnim preduvetjima i drugim važnim odredbama direktive 1999/5/EZ. Potpunu Izjavu o sukladnosti možete zatražiti na sledećoj poštanskoj adresi :
LG Electronics European Shared Service Center B.V. European Standard Team Krijgsman 1, 1186 DM Amstelveen The Netherlands
ili je možete potražiti na našem posebnom webmjestu za Izjavu o sukladnosti (DoC) :
http://www.lg.com/global/support/cedoc/cedoc#
Ovaj uređaj ima širokopojasni prijenosni sustav od 2,4 GHz, koji je namijenjen za upotrebu u svim državama članicama EU-a i svim državama EFTA-e.

MAGYARI Megfelelőségi nyilatkozás

Az LG Electronics European Shared Service Center B.V. ezennel kijelenti, hogy a jelen Wireless gateway megfelel az 1999/5/EK irányelv alapvető követelményeinek és más vonatkozó előírásainak. A teljes Megfelelőségi Nyilatkozatot kérje a következő levelezési címre eljuttatott levélben :
LG Electronics European Shared Service Center B.V. European Standard Team Krijgsman 1, 1186 DM Amstelveen The Netherlands
Vagy kérje DoC weboldalunkon keresztül :
http://www.lg.com/global/support/cedoc/cedoc#
Az eszköz 2,4 GHz szélessávú átviteli rendszerrel működik, amelyet minden EU-tagállamban és EFTA-országban lehet használni.

POLSKI Deklaracja zgodności

Firma LG Electronics European Shared Service Center B.V. niniejszym zaświadcza, że ten Wireless gateway spełnia wymagania i odpowiednie przepisy dyrektywy 1999/5/WE. Pełny tekst Deklaracji zgodności można uzyskać po wysłaniu wniosku na niniejszy adres :
LG Electronics European Shared Service Center B.V. European Standard Team Krijgsman 1, 1186 DM Amstelveen The Netherlands
lub za pośrednictwem strony firmy LG poświęconej Deklaracji zgodności :
http://www.lg.com/global/support/cedoc/cedoc#
Urządzenie stanowi szerokopasmowy system transmisyjny o częstotliwości 2,4 GHz, przeznaczony do użytku w krajach członkowskich UE oraz krajach zrzeszonych w EFTA.

ČESKY Prohlášení o shodě

Sředitisko LG Electronics European Shared Service Center B.V. tímto prohlašuje, že tento Wireless gateway odpovídá základním požadavkům a dalším relevantním ustanovením směrnice 1999/5/EC. Prohlášení o shodě v úplném znění si můžete vyžádat na následující adrese
LG Electronics European Shared Service Center B.V. European Standard Team Krijgsman 1, 1186 DM Amstelveen The Netherlands
Případně si jej můžete vyžádat na naší stránce věnované prohlášení o shodě :
http://www.lg.com/global/support/cedoc/cedoc#
Toto zařízení využívá širokopásmový přenosový systém 2,4 GHz a je určeno pro použití ve všech členských zemích EU a zemích EFTA.

SLOVENČINA Vyhlásenie o zhode

Spoločnosť LG Electronics European Shared Service Center B.V. týmto vyhlasuje, že tento Wireless gateway spĺňa základné požiadavky a iné relevantné ustanovenia smernice 1999/5/ES. O kompletné Vyhlásenie o zhode môžete požiadať na nasledujúcej poštovej adrese :
LG Electronics European Shared Service Center B.V. European Standard Team Krijgsman 1, 1186 DM Amstelveen The Netherlands
alebo na našej webovej stránke vonovanej Vyhlásenie o zhode :
http://www.lg.com/global/support/cedoc/cedoc#
Toto zariadenie je širokopásmový prenosový systém pracujúci v pásme 2,4 GHzurčený na používanie vo všetkých členských štátoch EÚ a krajinách EZVO.

TÜRKÇE Uygunluk Bildirimi

İşbu belirleme LG Electronics European Shared Service Center B.V. bu Wireless gateway 1999/5/AT direktifinin temel gerekliliklerine ve diğer ilgili hükümlerine uygun olduğunu beyan eder. Uygunluk Beyanının tamamı aşağıdaki posta adresinden talep edilebilir :
LG Electronics European Shared Service Center B.V. European Standard Team Krijgsman 1, 1186 DM Amstelveen The Netherlands
Talebinizi aşağıdaki Uygunluk Beyanı web sitemizden de iletebilirsiniz :
http://www.lg.com/global/support/cedoc/cedoc#
Bu aygıt 2,4 GHz genis bant iletim sisteminde sahiptir ve tüm AB üyesi devletler ve EFTA ülkelerinde kullanılması için tasarlanmıştır.

SHQIP Deklarata e konformitetit

Me anë të këtyj dokumenti, LG Electronics European Shared Service Center B.V. deklarën se kjo Wireless gateway është në përputhje me kërkesat lidhësores dhe dispozita të tjera përkëtasë të Direktivës 1999/5/KE. Deklarata e plotë e konformitetit mund të kërkohet nëpërmjet adresës së mëposhtme postale :
LG Electronics European Shared Service Center B.V. European Standard Team Krijgsman 1, 1186 DM Amstelveen The Netherlands
ose mund të kërkohet në faqen tonë të dedikuar DoC :
http://www.lg.com/global/support/cedoc/cedoc#
Kjo pajisje është sistem transmetimi brezit të gjerë 2,4 GHz, i destinuar për përdorim në të gjitha shtetet anëtare të BE-së dhe shtetet e EFTA-s.

BOSANSK Izjava o usklađenosti

Kompanija LG Electronics European Shared Service Center B.V. ovim putem potvrđuje da je ovaj Wireless gateway usklađen s temeljnim zahtjevima i drugim relevantnim odredbama Direktive 1999/5/EC. Potpuni tekst izjave o usklađenosti možete zatražiti na sljedećoj poštanskoj adresi :
LG Electronics European Shared Service Center B.V. European Standard Team Krijgsman 1, 1186 DM Amstelveen The Netherlands
ili ga možete potražiti na našoj posebnoj DoC web stranici :
http://www.lg.com/global/support/cedoc/cedoc#
Ovaj uređaj je širokopojasni prenosni sistem od 2,4 GHz, namijenjen za upotrebu u svim zemljama članicama EU i zemaljama EFTA.

МАКЕДОНС КИ Декларација за усогласеност

Со ова, LG Electronics European Shared Service Center B.V., изјавува дека овој Wireless gateway е во согласност со неопходните барања и други поважни одредби од Директивата 1999/5/EC. Целосната Декларација за усогласеност може да се побара на следната поштенска адреса :
LG Electronics European Shared Service Center B.V. European Standard Team Krijgsman 1, 1186 DM Amstelveen The Netherlands
или пак на нашиот посебно наменет веб-сајт за декларација за усогласеност :
http://www.lg.com/global/support/cedoc/cedoc#
Овој уред претставува широкопојасен преносен систем од 2,4 GHz наменет за употреба во сите земји членки на ЕУ и државите на ЕФТА.

ROMÂNĂ Declarație de conformitate

Prin prezenta, LG Electronics European Shared Service Center B.V., declară că Wireless gateway este în conformitate cu cerințele esențiale și alte prevederi relevante ale Directivei 1999/5/CE. Declarația completă de conformitate poate fi solicitată de la următoarea adresă poștală :
LG Electronics European Shared Service Center B.V. European Standard Team Krijgsman 1, 1186 DM Amstelveen The Netherlands
sau poate fi solicitată pe site-ul nostru DoC :
http://www.lg.com/global/support/cedoc/cedoc#
Acest dispozitiv este un sistem de transmisie de bandă largă 2,4 GHz, destinat utilizării în toate statele membre UE și stele EFTA

БЪЛГАРС КИ Декларация за съответствие

LG Electronics European Shared Service Center B.V. декларира с настоящото, че този Wireless gateway е в съответствие със съществените изисквания и други съответни разпоредби на Директива 1999/5/ЕО. Пълната декларация за съответствие може да бъде поискана посредством следния пощенски адрес :
LG Electronics European Shared Service Center B.V. European Standard Team Krijgsman 1, 1186 DM Amstelveen The Netherlands
или може да бъде поискана от нашия специализиран уеб сайт за DoC (декларация за съответствие) :
http://www.lg.com/global/support/cedoc/cedoc#
Това устройство е 2,4 GHz широколентово система за пренос, предназначена за използване във всички държави, членки на ЕС и ЕАСТ.

SVENSKA Försäkran om överensstämmelse

Härmed intygar LG Electronics European Shared Service Center B.V. att den här Wireless gateway uppfyller gällande regler och andra relevanta delar av direktiv 1999/5/EC. Du kan beställa en fullständig Försäkran om överensstämmelse från följande adress :
LG Electronics European Shared Service Center B.V. European Standard Team Krijgsman 1, 1186 DM Amstelveen The Netherlands
Du kan också beställa den på vår särskilda DoC webbplats :
http://www.lg.com/global/support/cedoc/cedoc#
Denna enhet är ett 2,4 GHz bredbandsöverföringsssystem avsett att användas i alla EUs medlemsstater och EFTA-länder.

NORSK Samsvarserklæring

LG Electronics European Shared Service B.V. erklærer herved at denne Wireless gateway oppfyller hovedkravene og andre relevante bestemmelser i direktiv 1999/5/EF. Du kan be om den fullstendige samsvarserklæringen på følgende postadresse :
LG Electronics European Shared Service Center B.V. European Standard Team Krijgsman 1, 1186 DM Amstelveen The Netherlands
Du kan også be om samsvarserklæringen på vårt DoC-nettsted :
http://www.lg.com/global/support/cedoc/cedoc#
Denne enheten er et 2,4 GHz wideband overføringsssystem, som er tiltenkt for bruk i alle EU medlemsstater og EFTA-land.

ITALIANO Dichiarazione di conformità

Con la presente, LG Electronics European Shared Service Center B.V. dichiara che questo Wireless gateway è conforme ai requisiti essenziali e alle altre disposizioni della Direttiva 1999/5/CE. La versione completa della Dichiarazione di conformità può essere richiesta tramite il seguente indirizzo postale :
LG Electronics European Shared Service Center B.V. European Standard Team Krijgsman 1, 1186 DM Amstelveen The Netherlands
oppure visitando il nostro sito Web dedicato relativo alla Dichiarazione di conformità :
http://www.lg.com/global/support/cedoc/cedoc#
Il dispositivo è un sistema di trasmissione a banda larga da 2,4 GHz, da utilizzare esclusivamente in tutti gli stati membri dell'Unione Europea e nei paesi dell'area EFTA.

ҚАЗАҚША Сәйкестік мәлімдемесі

Осы арқылы LG Electronics European Shared Service Center B.V. бұл Wireless gateway 1999/5/EC директивасының негізгі талаптары мен басқа тиісті ережелеріне сәй екенін мәлімдейді. Толық Сәйкестік туралы мәлімдемелі келесі пошталық мекенжай арқылы сұрауға болады :
LG Electronics European Shared Service Center B.V. European Standard Team Krijgsman 1, 1186 DM Amstelveen The Netherlands
немесе біздің арнаулы СТМ веб-сайтынан сұрауға болады :
http://www.lg.com/global/support/cedoc/cedoc#
Осы құрылғы барлық Еуропалық Одаққа мүше мемлекеттер мен Еуропалық еркін сауда қауымдастығы елдерінде пайдалануға арналған 2,4 ГГц кең жолақты беру жүйесі болып табылады.

РУССКИЙ Заявление о соответствии

Настоящим LG Electronics European Shared Service Center B.V., заявляет, что данный Wireless gateway соответствует основным требованиям и иным соответствующим пунктам Директивы 1999/5/ЕС. Полный текст Заявления о соответствии можно запросить по следующему почтовому адресу :
LG Electronics European Shared Service Center B.V. European Standard Team Krijgsman 1, 1186 DM Amstelveen The Netherlands
или запросить на нашем специальном веб-сайте DoC :
http://www.lg.com/global/support/cedoc/cedoc#
Это устройство является широкополосной системой передачи в диапазоне 2,4 ГГц и предназначено для использования во всех государствах-членах ЕС и странах ЕФТА.

Українська Декларация про відповідність

Цим LG Electronics European Shared Service Center B.V. стверджує, що цей Wireless gateway відповідає основним вимогам та іншим відповідним умовам Директиви 1999/5/EC. Повну декларацію сумісності можна отримати за адресою :
LG Electronics European Shared Service Center B.V. European Standard Team Krijgsman 1, 1186 DM Amstelveen The Netherlands
або на нашій спеціальній веб-сторінці :
http://www.lg.com/global/support/cedoc/cedoc#
Цей пристрій є широкополосною системою передавання в діапазоні 2,4 ГГц і призначений для використання в усіх державах-членах ЄС та країнах ЕФТА.

1. Installation to Product

1. Lighting product

This product is only used inside LED lighting luminaire of LG Electronics

This device is for LG Electronics lighting products only.

FCC ID : BEJ9GW97185D3

IC : 2703H-9GW97185D3

Federal Communications Commission (FCC) Statement

You are cautioned that changes or modifications not expressly approved by the part responsible for compliance could void the user's authority to operate the equipment. This equipment has been tested and found to comply with the limits for a Class B digital device, pursuant to part 15 of the FCC rules. These limits are designed to provide reasonable protection against harmful interference in a residential installation. This equipment generates, uses and can radiate radio frequency energy and, if not installed and used in accordance with the instructions, may cause harmful interference to radio communications. However, there is no guarantee that interference will not occur in a particular installation. If this equipment does cause harmful interference to radio or television reception, which can be determined by turning the equipment off and on, the user is encouraged to try to correct the interference by one or more of the following measures:

- Reorient or relocate the receiving antenna.
- Increase the separation between the equipment and receiver.
- Connect the equipment into an outlet on a circuit different from that to which the receiver is connected.
- Consult the dealer or an experienced radio/TV technician for help.

This device complies with Part 15 of the FCC Rules. Operation is subject to the following two conditions:

- 1) this device may not cause harmful interference, and
- 2) this device must accept any interference received, including interference that may cause undesired operation of the device of the device.

Equipment used at position in which the spaces between human body and antenna exceeded 20cm

FCC Caution

Any changes or modifications not expressly approved by the party responsible for compliance could void the user's authority to operate this equipment and For indoor use only, use outdoors or in other modes not covered by this manual may violate the FCC regulation and violate the user authority to use the product.

FCC RF Radiation Exposure Statement:

This equipment complies with FCC radiation exposure limits set forth for an uncontrolled environment. End users must follow the specific operating instructions for satisfying RF exposure compliance.

Industry Canada Statement:

This device complies with RSS-210 of the Industry Canada Rules. Operation is subject to the following two conditions:

- 1) this device may not cause interference and
- 2) this device must accept any interference, including interference that may cause undesired operation of the device.

Avis d'Industrie Canada :

Cet appareil est conforme à la norme CNR-210 des règlements d'Industrie Canada. Son fonctionnement est sujet aux deux conditions suivantes :

- 1) Cet appareil ne doit pas provoquer d'interférences et
- 2) Cet appareil doit accepter toutes les interférences, y compris celles pouvant entraîner son dysfonctionnement.

IC Radiation Exposure Statement:

This equipment complies with IC radiation exposure limits set forth for an uncontrolled environment.

NOTE: THE MANUFACTURER IS NOT RESPONSIBLE FOR ANY RADIO OR TV INTERFERENCE CAUSED BY UNAUTHORIZED MODIFICATIONS TO THIS EQUIPMENT. SUCH MODIFICATIONS COULD VOID THE USER'S AUTHORITY TO OPERATE THE EQUIPMENT.

Avis d'Industrie Canada sur l'exposition aux rayonnements

Cet appareil est conforme aux limites d'exposition aux rayonnements d'Industrie Canada pour un environnement non contrôlé.

REMARQUE : LE FABRICANT N'EST PAS RESPONSABLE DES INTERFÉRENCES RADIOÉLECTRIQUES CAUSÉES PAR DES MODIFICATIONS NON AUTORISÉES APPORTÉES À CET APPAREIL. DE TELLES MODIFICATIONS POURRAIT ANNULER L'AUTORISATION ACCORDÉE À L'UTILISATEUR DE FAIRE FONCTIONNER L'APPAREIL.