



Take a photo with the smartphone and print it right away with
LG Pocket Photo
Android Only



The actual product may differ from the image.

Owner's manual

Please read this manual carefully before operating your device.

MODEL : PD221



Scan the QR code.



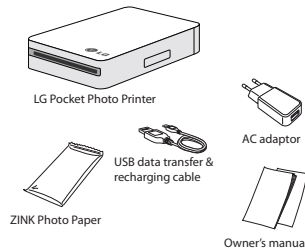
Safety information

- Do not put the container containing liquid on.
- Avoid direct sunlight or heat.
- Do not disassemble, repair, or converse.
- Do not place in too low temperature.
- Do not place an heavy object.
- Do not spray water on directly.
- Do not drop or give shock.
- Observe the rated voltage and current (5 V 1 A).
- Do not place near a magnet or within the magnetic field.
- Clean with a dry cloth.
- Do not place in dirty or sooty place.
- Keep out of reach of children.
- Do not place in hot or humid place.

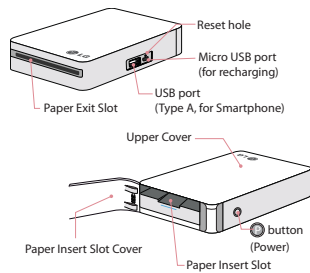


STEP 1 Getting started

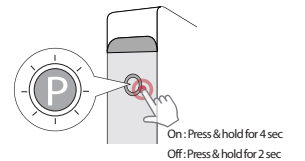
Components



Product Overview



Power On / Off

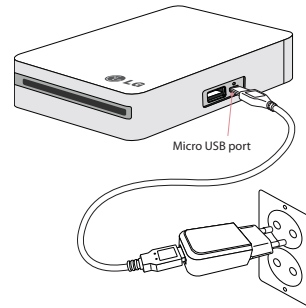


Note

- When turning the device on, the Power button flashes for 5 sec. After that, printing is available.
- The LED indicator (Power button) uses color display to give a visual indication of the device condition. For more information, see "About LED indicator" on the back page.

STEP 2 Charging battery

This device uses built-in battery. Before using it, charge the battery in full. (Refer to below)



- Battery Charging Time : 1.5 hour
Battery Indications of LED indicator (Power button)
- Charging : Red / 100% : Green (When turned off)
 - 10% : flashes for about 3 sec.
 - 0% : flashes for about 30 sec and turned off.

Caution

- Using unauthorized device may cause malfunction. In this case, free product service is not provided.
- Handle with care while charging the device to prevent electric shock.

Note

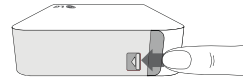
- Notes on charging battery**
- You can connect the device to PC using the USB data transfer & recharging cable provided, but charging time can be longer.
 - Battery lasting time can differ depending on the temperature, period you have used for, and personal mobility.
 - Once fully charged, you can print up to 15 papers in a row.
 - When the battery is dead, printing is available after charging it for minimum 10 mins. (Charge in full when you want to print in a row.)

Notes on handling device (battery)

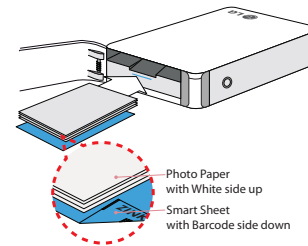
- Do not place near heating appliance.
- Do not disassemble or deform.
- Do not give shock on.
- Avoid too high or low temperature or humidity.

STEP 3 Inserting Photo Paper

1. Open the Paper Insert Slot Cover.



2. Unwrap the pack of the photo papers.
3. Slide Smart Sheet (Blue one) and photo papers together into as shown below. Smart Sheet will be out automatically before first printing.
- Do not insert more than 1 pack (10 Photo papers and 1 Smart Sheet). 2 papers may be out at the same time or paper jam may occur.
 - Insert a new pack after using up the remains.



Cleaning Printer head using Smart Sheet

Smart Sheet cleans printer head and corrects the color of photo. Keep the best print quality by using it repeatedly.

Paper Jam Solution

Do not pull the paper out. Turn the device off and on again, the paper will be out automatically.
If this problem is not solved, please refer to "Things to check before reporting problem".

Caution

Pulling out jammed paper by force may result in malfunction.

Note

- Notes on Photo Paper**
- Do not damage or bend the papers.
 - Be careful when you touch the paper not to get dirt on.
 - Using soiled paper may result in malfunction.
 - Using photo papers from other company may result in malfunction or paper jam.
 - Check the expiration date on the wrapping before using.
 - Do not place inside a car or, expose to direct sunlight or moisture.
 - Do not leave in a place where the temperature or humidity is too high or low. It may cause low quality images.
 - Papers can begin to veer off after unwrapping for a long time. Quickly using them is recommended.

STEP 4 Installing App

From Play store (Android market)

Search for "LG Pocket Photo".



Using QR code

Scan the QR code on the product box or cover of the manual.



Using NFC

Refer to "Printing by using NFC" in the back page.

App Setting

Set the options in [Setting].



- NFC** : Prints by using NFC (NFC mounted phone only)
- Bluetooth** : Prints by using Bluetooth
- USB debugging** : Prints by connecting to smartphone with a USB cable
- GPS** : Saves the location where you took a photo

* NFC : Near Field Communication
** GPS : Global Positioning System using a satellite

See "Help" for details

For more information about the App, touch "Help".



STEP 5 Printing Image

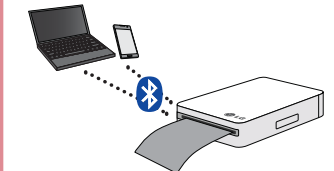
Printing by using Bluetooth

Preparation : Turn the device on, and start printing with the white LED (Power button) turning on.

- Launch LG Pocket Photo App on smartphone.
- Select photo to print, and touch [Print].
- Touch [Select], then searching Bluetooth device is processed.
- When Bluetooth connecting for the first time, [Bluetooth pairing request] appears. To start printing, touch [Pairing].
 - If Smart Sheet is in the paper tray, it will be out before starting printing.
 - The color of impression can be different between printed photo and image on smartphone's display.



- If there are more than a LG Pocket Photo device, check MAC address on the label to choose appropriate one. (Refer to "Checking Label" on the back page.)
- You can print photos without App, but using Bluetooth on Smartphone. Choose a photo to print in [Gallery] and select Bluetooth in [Share] or [Menu].



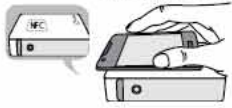
Caution

- Do not pull paper out by force while printing.
- Do not open the Paper Insert Slot Cover while printing.
- Do not place an object in front of the Paper Exit Slot.
- If the device is vibrated or given shock, the print quality may be lower.
- Once the battery is fully charged, you can print up to 15 papers in a row. It depends on using time or way it may differ.
- The Bluetooth searching and transferring may fail depending on its environment. Check the Bluetooth condition on your phone and try again.

Printing by Using NFC (※)

Check whether your smartphone supports NFC first.

- How to read NFC tag : Make smartphone get near to NFC tag on the device.



1. Tagging for the first time, it links to Play store where you can download LG Pocket Photo App.
2. Check [NFC] in [Setting] on App installed.



3. Choose photo to print and tag, then printing is started immediately. From this time, you can launch the App and print a photo by just tagging.

Note

- If NFC tag is not read, check the position of it on LG Pocket Photo, and try again.
- If your smartphone case is plated with chrome, NFC is unavailable. Depending on your cases material or thickness, NFC may not be recognized well.

Printing by using USB (㉑)

1. Connect LG Pocket Photo to smartphone by using USB data transfer & recharging cable.



2. Launch LG Pocket Photo App on smartphone.
3. Choose photo to print, and touch [Print].

Note

- If the device is not connected, check USB options in Settings on smartphone.
- Because smartphone recognizes LG Pocket Photo as an energy resource while connected, disconnect the device when not in use.
- Connecting the device to PC, Tablet PC, Digital camera and iPhone by using USB is not available.

Checking Device Information

You can check remaining battery time, the number of the photos you have printed, version of the App, MAC address, and change the setting of print mode.

1. Connect LG Pocket Photo to smartphone using USB cable. (Unavailable via Bluetooth)
2. Launch LG Pocket Photo App on smartphone.
3. Go to [Setting].
4. Touch [Device Information].



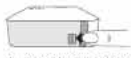
- Auto exposure : Corrects color of a image
- Paper full : Prints without white space. (the edge of the image can be cut.)
- Image full : Prints an image as a whole. (white space can occur at the edge of paper.)
- Auto off : Set time for Auto-off after Standby (Default is 5 mins, but you can set to up to 2.5 hours when fully charged.)

Note

The Longer time you set Auto-off to, the more the battery consumption is. The number of maximum printable pages may be changed.

Checking Label

In case there are more than a LG Pocket Photo, check MAC address here to choose appropriate one.



1. Open the Paper Insert Slot Cover.



2. Open the Upper Cover.



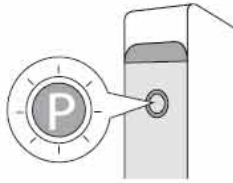
3. You can find the product label.

Caution

- Be sure the device is off before opening.
- Be sure the Paper Insert Slot Cover is opened when you close the Upper Cover.
- Recommend not to open the Upper Cover as possible except for checking the label.
- Do not detach the black rubber pad. Doing this may cause malfunction.

About LED indicator

The LED indicator (㉑ button) uses color display to give a visual indication of the device condition.



LED color	Condition	Description
	Standby/ On	Waits for printing. Device is turned off automatically if there is no work for certain amount of time.
	Charged/ Off	To print, turn on the device.
	Charging/ Off	To print, turn on the device.
	Error/ On	No paper, paper jam, cancelled, Opened, Low temperature, Unsupported file format
	Need to charge/ On	To print, charge the device.
	Printing/ On	Transferring data via USB or Bluetooth, Printing, Connecting via USB
	Cooling mode/ On	Printer is overheated when printing many in a row, printing time becomes longer. In this case, wait for a while.

Specifications

Photo size	50 mm x 76 mm (Dot size : 640 x 1224)
Image file type/size	JPEG (Baseline) / less than 10 MB (Progressive JPEG is not supported.)
Media paper used	ZINK™ Photo Paper (Ver.: 2.0)
Media paper storage environment	Temperature : 20 - 25 °C Humidity : 40 - 55 % RH
Device operation environment	Temperature : 5 - 40 °C Humidity : less than 70 % (35 °C) (Pops up the limitation message.)
Print environment	Temperature : 15 - 32 °C Humidity : less than 70 % (32 °C)
Display	Power / Standby / Bluetooth transmitting / Charged / Discharged / Error / Condition of printer
Communications	Bluetooth 2.1 + EDR (Supported profile : OPP) Operation distance : about 10 m USB (Android only)
External connector	USB (Type A) for Android phone Micro USB port for charging battery
Bus Power Supply (USB)	DC 5 V $\overline{\text{m}}\text{A}$ 1.0 A
Battery life	500 mAh Li-Polymer rechargeable battery (Can be charged up to 300 times) Maximum 15 prints when fully charged
Power supply	500 mAh Li-Polymer rechargeable battery 5 V 1 A AC adaptor
Image resolution	More than 1280 x 2448 px
Dimensions (W x D x H)	72.4 mm x 120.9 mm x 24 mm
Weight	212 g

- Some items may not be supported depending on your phone environment or Android operating system provided by each manufacturing.

Troubleshooting

Problem	Things to be confirmed
Power is not on.	Be sure the device is charged. Be sure the device is connected to power cord or PC properly when charging.
Bluetooth pairing does not work well.	Switch Bluetooth off and on again or manually pair with the device in Settings on your smartphone. Turn on the device and try printing (pairing) again in 5 sec. Be sure that LG Pocket Photo is on.
Paper jam occurs.	1. Do not pull the paper in force. Turn the device off and on again then paper is out automatically. 2. If above solution does not work, open the Upper Cover and arrange the papers and insert them with Smart Sheet (Blue).
Lines appear on the photo.	Open the Upper Cover, arrange the papers and insert them with Smart Sheet locating at the bottom and try again. (To open the Upper Cover, refer to "Checking Label")
Partially or nothing is printed.	
Image printed is cut.	Set print mode to [Image full] in [Setting] on LG Pocket Photo App then the image is printed as a whole.
White space appears at the edge of the paper.	When Print mode is set to [Image full], white space may appear if the aspect ratio of the paper and your image is not the same. When [Paper full], the edge of the image can be cut or little white space at the edge of the paper may appear.
Printed image quality is too low.	In case you magnify an image using Edit menu in the App, Printed image quality may be low. Turn off the device, insert Smart Sheet locating at the bottom of the papers. And try again. Be sure the image is more than proper resolution (1280 x 2448 px)
Device does not print.	Needs to preheat. Wait for about 2 mins. Be sure there are papers in tray. It may take time to print after Smart Sheet is out. Be sure image is less than 10 MB. Progressive JPEG format is not supported.
Device is turned off automatically.	Check Auto-off time in [Setting] on LG Pocket Photo App. (via USB)
Above solution does not work.	Press Reset hole with a pointed thing like sharp pencil to initialize.

FCC Warning:

Changes or modifications not expressly approved by the party responsible for compliance could void user's authority to operate the equipment.

This device complies with Part 15 of the FCC Rules.

Operation is subject to the following two conditions: (1) this device may not cause harmful interference, and (2) this device must accept any interference received, including interference that may cause undesired operation.

Note

THE FOLLOWING APPLIES ONLY IN CANADA. CE QUI S'APPLIQUE QU'AU CANADA.

This device complies with RSS-210 of the IC Rules. Operation is subject to the following two conditions: (1) this device may not cause interference, and (2) this device must accept any interference, including interference that may cause undesired operation of the device. Cet appareil radio est conforme au CNR-210 d'Industrie Canada. L'utilisation de ce dispositif est autorisée seulement aux deux conditions suivantes : (1) il ne doit pas produire de brouillage, et (2) l'utilisateur du dispositif doit être prêt à accepter tout brouillage radioélectrique reçu, même si ce brouillage est susceptible de compromettre le fonctionnement du dispositif.

FCC/IC Radio Frequency Exposure

The available scientific evidence does not show that any health problems are associated with using low power wireless devices. There is no proof, however, that these low power wireless devices are absolutely safe. Low power Wireless devices emit low levels of radio frequency energy (RF) in the microwave range while being used. Whereas high levels of RF can produce health effects (by heating tissue), exposure to low level RF that does not produce heating effects causes no known adverse health effects. Many studies of low level RF exposures have not found any biological effects. Some studies have suggested that some biological effects might occur, but such findings have not been confirmed by additional research. This device has been tested and found to comply with FCC/IC radiation exposure limits set forth for an uncontrolled environment and meets the FCC radiation frequency (RF) Exposure Guidelines in Supplement C to OET-65 and RSS-102 of the IC radio frequency (RF) Exposure rules.

Exposition aux radiofréquences FCC/IC

Selon les preuves scientifiques disponibles, aucun problème de santé n'est associé à l'utilisation d'appareils sans fil de faible puissance. Rien ne prouve cependant que ces appareils sont absolument sans danger. Lorsqu'ils sont utilisés, les appareils sans fil de faible puissance émettent de faibles niveaux d'énergie radiofréquence (RF) dans la gamme des hyperfréquences. Bien que les niveaux élevés de radiofréquence puissent avoir un effet sur la santé (réchauffement des tissus), l'exposition à de faibles niveaux n'ayant pas d'effet thermique n'a aucun impact négatif connu sur la santé. De nombreuses études sur l'exposition aux radiofréquences de faible niveau n'ont révélé aucun effet biologique. Certaines d'entre elles ont sous-entendu qu'il pourrait y avoir de tels effets, mais leurs résultats n'ont pas été confirmés par des recherches supplémentaires. Les modèles suivants ont été testés et se sont avérés conformes aux limites d'exposition aux rayonnements définies par la FCC et IC pour l'environnement non contrôlé ; ils répondent aux règles sur l'exposition aux rayonnements RF (radiofréquence) de la FCC et à celles de la norme RSS-102 d'IC.



Hereby declares that this pocket photo is in compliance with essential requirements and other relevant provision of R&TTE Directive 1999/5/EC. The standard for complying are as following:
ETSI EN 301 489-1 V1.9.2:2011-09
ETSI EN 301 489-17 V2.1.1:2009-05
ETSI EN 300 328 V1.7.1:2006
EN 60950-1:2005+A11:2009

