

Chapter 1.Tips



1-1. Read this carefully before using the Notebook PC.

▶ Regulatory Notices

1-1 USA Notice

Federal Communications Commission

Notice

This equipment has been tested and found to comply with the limits for a Class B digital device, pursuant to Part 15 of the FCC Rules. These limits are designed to provide reasonable protection against harmful interference in a residential installation. This equipment generates, uses, and can radiate radio frequency energy and, if not installed and used in accordance with the instructions, may cause harmful interference to radio communications. However, there is no guarantee that interference will not occur in a particular commercial installation, or if operated in a residential area.

If harmful interference with radio or television reception occurs when the device is turned on, the user must correct the situation at the user's own expense. The user is encouraged to try one or more of the following corrective measures:

- Re-orient or relocate the receiving antenna.
- Increase the separation between the equipment and receiver.
- Connect the equipment into an outlet on a circuit different from that on which the receiver is connected.
- Consult the dealer or an experienced radio/TV technician for help.

Modifications : The FCC requires the user to be notified that any changes or modifications made to this device that are not expressly approved by LG Company may void the authority to operate the equipment.

Cables : Connections to this device must be made with shielded cables with metallic RF/EMI connector hoods in order to maintain compliance with FCC Rules and Regulations.

RF Radiation Exposure Statement : This equipment complies with FCC RF radiation exposure limits set forth for an uncontrolled environment. This device and its antenna must not be co-located or operation in conjunction with any other antenna or transmitter.

Caution: Regulations of the FCC and FAA prohibit airborne operation of radio-frequency wireless devices because their signals could interfere with critical aircraft instruments.

Declaration of Conformity for products marked with the FCC logo

This device uses, generates and radiates radio frequency energy. The radio frequency energy produced by this device is well below the maximum exposure allowed by the Federal Communications Commission (FCC).

This device complies with Part of FCC Rules and Regulations. Operation is subject to the following two conditions. (1) This device may not cause harmful interference, and (2) This device must accept any interference received, including interference that may cause undesired operation.

Responsible Party :

LG ELECTRONICS U.S.A., INC.
1000 SYLVAN AVENUE
ENGLEWOOD CLIFFS, NJ
Telephone : 1-800-243-0000

**1-2.Canada Notice**

This Class B digital apparatus complies with Canadian ICES-003, Issue 4, and RSS-210, No. 4 (Dec. 2000) and No. 5(Nov. 2001).

"To prevent radio interference to the licensed service, this device is intended to be operated indoors and away from windows to provide maximum shielding. Equipment (or its transmit antenna) that is installed outdoors is subject to licensing."

Cet appareil numérique de la classe B est conforme à la norme NMB-003, No. 4, et CNR-210, No. 4 (Dec. 2000) et No. 5(Nov. 2001).

« Pour empêcher que cet appareil cause du brouillage au service faisant l'objet d'une licence, il doit être utilisé à l'intérieur et devrait être placé loin des fenêtres afin de fournir un écran de blindage maximal. Si le matériel (ou son antenne d'émission) est installé à l'extérieur, il doit faire l'objet d'une licence. »

"Operation is subject to the following two conditions: (1) this device may not cause interference, and (2) this device must accept any interference, including interference that may cause undesired operation of the device."

1) Bluetooth Module (QBT400UB)




This device has been designed to operate with an antenna having a maximum gain of [0.69] dBi.
Antenna having a higher gain is strictly prohibited per regulations of Industry Canada.
The required antenna impedance is 50 ohms.

2) WLAN (RTL8187SE)

This device has been designed to operate with an antenna having a maximum gain of [2.05] dBi.
Antenna having a higher gain is strictly prohibited per regulations of Industry Canada.
The required antenna impedance is 50 ohms.

1-3. European Union

This notebook PC contains two or three of the following RF modules.

 for ERICSSON F3507g
 for RTL8187SE(AW-GE703H)
 for QBT400UB

Translated Statements of Compliance

[English]

This product follows the provisions of the European Directive 1999/5/EC.

[Danish]

Dette produkt er i overensstemmelse med det europæiske direktiv 1999/5/EC

[Dutch]

Dit product is in navolging van de bepalingen van Europees Directief 1999/5/EC.

[Finnish] Tämä tuote noudattaa EU-direktiivin 1999/5/EC määräyksiä.

[French]

Ce produit est conforme aux exigences de la Directive Européenne 1999/5/EC

[German]

Dieses Produkt entspricht den Bestimmungen der Europäischen Richtlinie 1999/5/EC

[Greek]

Το προϊόν αυτό πληροί τις προβλέψεις της Ευρωπαϊκής Οδηγίας 1999/5/EC.

[Icelandic]

Þessi vara stenst reglugerð Evrópska Efnahags Bandalagsins númer 1999/5/EC

[Italian]

Questo prodotto è conforme alla Direttiva Europea 1999/5/EC.

[Norwegian]

Dette produktet er i henhold til bestemmelsene i det europeiske direktivet 1999/5/EC.

[Portuguese]

Este produto cumpre com as normas da Diretiva Europeia 1999/5/EC.

[Spanish]

Este producto cumple con las normas del Directivo Europeo 1999/5/EC.

[Swedish]

Denna produkt har tillverkats i enlighet med EG-direktiv 1999/5/EC.

1-4. Brazil Notice

Este equipamento opera em caráter secundário, isto é, não tem direito a proteção contra interferência prejudicial, mesmo de estações do mesmo tipo, e não pode causar interferência a sistemas operando em caráter primário.

1-5. France Notice

Pour la France métropolitaine

2.400 - 2.4835 GHz (Canaux 1 à 13) autorisé en usage intérieur
2.400 - 2.454 GHz (canaux 1 à 7) autorisé en usage extérieur

Pour la Guyane et la Réunion

2.400 - 2.4835 GHz (Canaux 1 à 13) autorisé en usage intérieur
2.420 - 2.4835 GHz (canaux 5 à 13) autorisé en usage extérieur

1-6. Italy Notice

A general authorization is requested for outdoor use in Italy.

The use of these equipments is regulated by:

1. D.L.gs 1.8.2003, n. 259, article 104 (activity subject to general authorization) for outdoor use and article 105 (free use) for indoor use, in both cases for private use.
2. D.M. 28.5.03, for supply to public of RLAN access to networks and telecom services.
L'uso degli apparati è regolamentato da:
 1. D.L.gs 1.8.2003, n. 259, articoli 104 (attività soggette ad autorizzazione generale) se utilizzati al di fuori del proprio fondo e 105 (libero uso) se utilizzati entro il proprio fondo, in entrambi i casi per uso private.
 2. D.M. 28.5.03, per la fornitura al pubblico dell'accesso R-LAN alle reti e ai servizi di telecomunicazioni.

1-7. Latvia Notice

A license is required for outdoor use for operation in 2.4 GHz band.

1-9. Contact Information

Country	Telephone	Email or website
Poland	801-545454	http://pl.lgservice.com
Hungary	06-40-54-5454	http://hu.lgservice.com
Spain	902-500-234	http://es.lgservice.com
Netherlands	31-24-3731375	LG@ICT-FIX.COM
France		
Germany		
Italy		
Sweden		
UK		
Portugal	808-78-54-54	http://pt.lgservice.com
Canada	888-542-2623	nbwarranty@lge.com
Australia	1300-788-184	http://au.lgservice.com
China	400-819-9999	http://cn.lge.com
India	1800-1809999	http://in.lgservice.com
Korea	82-2-219-7777 (Korean)	globalsvc@lge.com
	82-31-610-9657 (English)	
Singapore	65-6512-0550	lgesg@lge.com
USA	1-800-243-0000	usapcsvc@lge.com

*The contact numbers listed above are subject to change without prior notice

SAFETY REGULATION NOTICE

Battery

If the backup battery is incorrectly replaced, there is danger of explosion. The lithium battery contains lithium and can explode if it is not properly handled or disposed of. Replace only with a battery of the type recommended by LG.

Australia Notice

- The appliance is not intended for use by young children or infirm persons without supervision
- Young Children should be supervised to ensure that do not play with appliance
- If the appliance is supplied from a cord extension set or an electrical portable outlet device.
- The cord extension set on electrical portable outlet device must be positioned so that it is not subject to splashing or ingress of moisture

Do not Connect safety extra-low voltage (SELV) circuits to telephone-network voltage (TNV) circuits.
LAN ports contain SELV circuits and WAN ports contain TNV circuits. Some LAN and WAN ports both use RJ-45 connectors.
Use caution when connecting cables.

European _ WEEE

Disposal of your old appliance



1. When this crossed-out wheeled bin symbol is attached to a product it means the product is covered by the European Directive 2002/96/EC.
2. All electrical and electronic products should be disposed of separately from the municipal waste stream via designated collection facilities appointed by the government or the local authorities.
3. The correct disposal of your old appliance will help prevent potential negative consequences for the environment and human health.
4. For more detailed information about disposal of your old appliance, please contact your city office, waste disposal service or the shop where you purchased the product.

Disconnect Device

- Plug and connector of the power supply cord
- Output jack of Power supply
- Main Battery Pack

"The apparatus power supply cord plug and appliance coupler are relied upon as the disconnect devices and shall remain readily accessible."

Declaration of Conformity



Suppliers Details

Name

LG Electronics Inc.

Address

**LG Electronics Inc.
19-1, Cheongho-ri, Jinwi-myeon, Pyeongtaek-si, Gyeonggi-do, 451-713, Korea**

Product Details

Product Name

Notebook PC

Model Name

LGX12

Trade Name

LG

Applicable Standards Details

1. Low Voltage Directives : 2006/95/EC

EN 60950-1:2001 +A11:2004

2. EMC Directives : 2004/108/EC

EN 55022:2006

EN 61000-3-2:2006

EN 55024:1998 +A1:2001 +A2:2003

EN 61000-3-3:1995 +A1:2001 +A2:2005

3. R&TTE Directives : 1999/5/EC

ETSI EN 300 328 V1.7.1

ETSI EN 301 489-1 V1.6.1

ETSI EN 301 511 V9.0.2

EN 50360:2001

ETSI EN 301 489-17 V1.2.1

ETSI EN 301 908-1 V3.2.1

EN 50361:2001

Supplementary Information

The conformity to above standards is verified by :

Low Voltage : KETI with Report No, W09-950-006,

EMC : Audix Corporation with Test Report No, EM-E980031,

R&TTE : Audix Corporation with Test Report No, EM-E980032, EM-E980033, EM-R980008, EM-R990009,

Quietek Corporation with Test Report No, 091321R-HPCEP08V01, 091321R-HPCEP09V01,

System with WLAN and/or Bluetooth and/or HSDPA function contains Realtek WLAN RTL8187SE

and/or Qcom Bluetooth QBT400UB and/or Ericsson HSDPA F3507g.

Year to begin affixing CE Marking 2009.

Declaration

I hereby declare under our sole responsibility that the product mentioned above to which this declaration relates complies with the above mentioned standards and Directives

Name

Issued Date

S. H. Ji / Director

FEB. 06, 2009

Position in Organization

**LG Electronics Service Europe B.V.
Veluwezoom 15, 1327 AE Almere, The Netherlands
(Tel : +31-036-547-8940, e-mail : jacob@lge.com)**

Signature of authorized person

DECLARATION OF CONFORMITY

This device complies with Part 15 of the FCC Rules. Operation is subject to the following two conditions : (1) this device may not cause harmful interference, and (2) this device must accept any interference received, including interference that may cause undesired operation.

Trade Name / Model : LG / LGX12
Responsible Party : LG Electronics Inc. / Product Safety & Compliance
Address : 1000 Sylvan Avenue Englewood Cliffs, NJ 07632. U.S.A.
Contact Person : Daniel Kim, General Manager
Tel. No. 1-800-243-0000 For Technical Support
Tel. No. 1-201-266-2420 For FCC Inquiry

Equipment Classification : FCC Class B Peripheral Device (JBP)
Type of Product(EUT) : Notebook PC
Manufacturer : LG Electronics.
Address : 19-1, Cheongho-Ri, Jinwuy-Myon
Pyungtaek-Shi, Kyunggi-Do, 451-713 Korea
Attention : Mr. H.S. Lee - General Manager
Digital Media Standards Group

We hereby declare that the equipment bearing the trade and model number specified above was tested conforming to the applicable FCC Rules under the most accurate measurement standards possible, and that all the necessary steps have been taken and are in force to assure that production units of the same equipment will continue to comply with the Commission's requirements.

LG Electronics Inc.



Daniel Kim
Signature

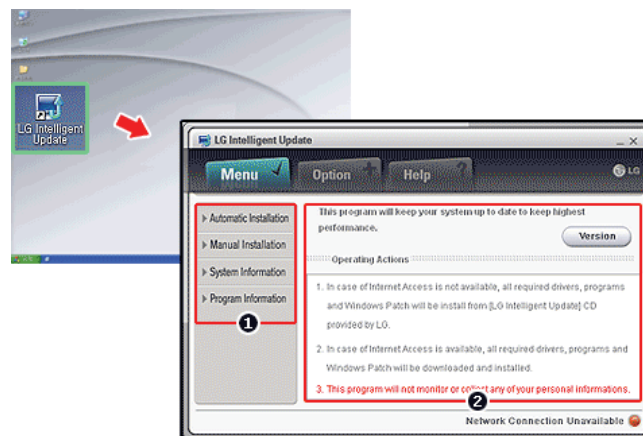
FEB/06/2009
Date

▶ ENERGY STAR

	<p>ENERGY STAR Compliance (Korea)</p> <p>As an ENERGY STAR partner, LG has determined that standard configurations of this product meet the ENERGY STAR guidelines for energy efficiency.</p> <p>The ENERGY STAR program is a partnership with electronic equipment manufacturers to promote energy-efficient products.</p> <p>Reducing energy consumption of products saves money and helps conserve valuable resources.</p> <p>This computer is shipped with power management enabled with the computer set to sleep after 20 minutes of user inactivity.</p> <p>To wake your computer, click the mouse or touchpad button or press any key on the keyboard.</p>
--	---

▶ LG Intelligent Update CD

To install a driver or application, use **LG Intelligent Update** CD provided by **LG Electronics**.



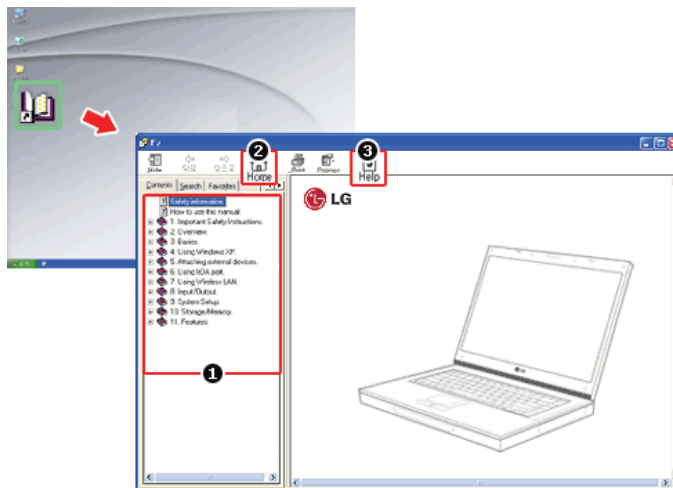
1. Guides you to configure the optimal environment for the system.
2. Provides you with an overview before use.

► Using Ez User Guide/Ez Troubleshooting

For more convenient use of the machine, we provide you with **Ez User Guide/Ez Troubleshooting**.

Install them by selecting **LG Intelligent Update CD > Manual Installation > Application**.

Click **Help** button and refer to Tour to learn how to use **Ez User Guide/Ez Troubleshooting**.



1. **Table of Contents**
2. **Start**
3. **Help:** Helps you to find the answers to your questions and solve problems.

► Ez User's Guide

Thank you for purchasing the **LG Electronics** product.

This machine is built on cutting-edge technology and has been tested reliably.

For the sake of convenient use, please read this manual in advance.

The below symbols are to inform you of dangers and safety concerns that you must be aware of. Read the symbol-indicated instructions with caution to avoid any possible mishap.

**Warning**

Appears in the case of noncompliance with the instruction that may cause serious physical damage or fatal injuries.

**Caution**

Appears in the case of noncompliance with the instruction that may cause minor damage to the body or the machine.

Microsoft, MS, Win PE, and WINDOWS are the registered trademarks of **Microsoft Corporation**.

IBM, IBM Personal Computer, PS/2, and PC AT are the registered trademarks of **International Business Machine Corporation**.



LG logo is a registered trademark of LG Corporation.



SONY logo and **Memory Stick** are the registered trademarks of SONY Corporation.



Transcend logo is a registered trademark of Transcend Corporation.



SD logo is a registered trademark of Secure Digital Corporation.

Copyright (C) 2009, **LG Electronics Inc., DigitalMate Co., Ltd.**

Please be understanding that this manual may contain incorrect parts despite our dedicated efforts to perfect it.

The exemplified figures in this manual may not exactly the same as the real products.

LG Electronics Inc. has rights to modify any part of this manual for the better without prior notice.

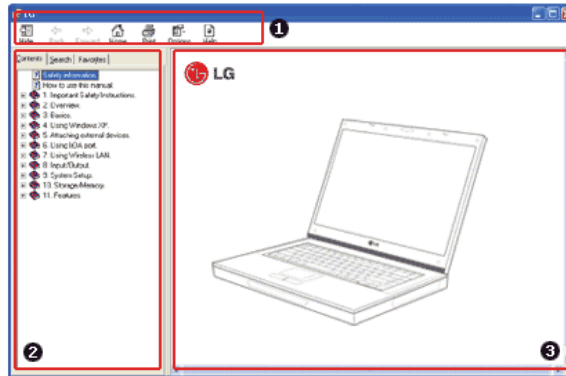
Unauthorized reproduction or duplication of any part of this manual is strictly prohibited.

This product has been designed for household use and passed the Electromagnetic Interference Test. Thus, this product may be used not only in residential areas but also in any other places.

Country of Origin: China

Manufacturer: LG Electronics (Kunshan) Computer Co.,Ltd.

► Ez User Guide Tour



1. Toolbar

- **Hide/Show:** Hide or show the navigation window.
- **Back:** Displays the previous page in the navigation history.
- **Forward:** Displays the next page in the navigation history.
- **Home:** Displays the Home page.
- **Print:** Prints the current page.
- **Option:** Displays options.
- **Help:** Mostly used for touring this guide.

2. Navigation Bar

- **Index:** Displays a categorized list of subjects.
- **Search:** Allows users to type key words and search manually.
- **Favorites:** Registers frequently searched items for more convenient future reference.

3. Description Pane

- Displays the explanation of the selected item.

1-2. Important safety information

Please avoid any undesirable environmental factor that shortens the machine's life span. Use the machine in a safe and stable place.

※ The warranty does not cover any damage resulting from reckless use or use in undesirable environments.

► Installation

Warning



Do not use the machine in damp places like a laundry room or bathroom.

Moisture may cause a glitch or an electric shock.

The desirable temperature and humidity ranges are from 10 to 35°C and from 80% to 20%, respectively.



Dispose of the desiccating agent and wrapping plastic properly.

The desiccating agent and wrapping plastic may cause suffocation.



Use the product in a dust-free environment.

Otherwise, the system may not function properly.



Do not leave any object nearer than 15 cm from the computer.

Otherwise, lack of ventilation could overheat the machine from inside and you could get a bum from the heat.

Caution



Place the machine in a safe place so that it does not fall.

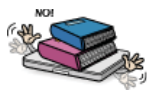
If dropped, the machine could be damaged and even cause an injury.



Do not leave or use the computer near a magnetic object.
 Otherwise, the H/D and the system may be damaged and fail to operate properly.
 Never place the computer on a bag with magnetic objects including magnetic buttons.
 Otherwise, the H/D and the system may be damaged and fail to operate properly.

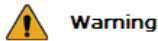


Operate the product in a place without electromagnetic interference.
 Keep a proper distance between the computer and such electronic appliances as speakers that generate strong magnetic fields.
 Otherwise, data may be lost from the hard disk or the LCD may show impaired coloration.



Do not put any heavy object on the machine.
 If falling, the object could damage the machine and cause an injury.

► Using Battery



Warning



Charge the battery only with the provided instrument.
 Otherwise, the battery may be damaged presenting a risk of fire.



Do not throw or disassemble the battery.
 The resulting impairment may cause an injury, explosion, or fire.



Use batteries certified and acknowledged by **LG Electronic Inc.**
 Otherwise, an explosion or fire may occur.



Prevent the battery from being contact with any metallic object like a car ignition key or a paper clip.
 Otherwise, the battery may be overheated to be damaged resulting in a fire or an injury.



Keep the battery away from heat.
 Otherwise, an explosion or fire may occur.



Do not short-circuit the battery.
Otherwise, it may explode.



Do not dispose of a spent (backup) battery arbitrarily.
It may explode or cause a fire.
Disposal methods may differ by country and region. Dispose of the spent battery in accordance with the laws and safety rules of the country and region.



If you find leakage or smell bad odor from the battery, remove the battery and contact the local service center.
It may explode or cause a fire.



Avoid humidity and heat above 60 °C as do in cars or saunas.
It may explode or cause a fire.



Keep the battery out of reach of children or pets.
If damaged, it could cause an injury.



Keep the battery from being pierced by a sharp object or a chew of your pet.
It may explode or cause a fire.



Do not sink the battery in water.
Otherwise, the battery may be damaged presenting a risk of explosion.



Ensure that the battery pack is locked to the machine after installation.
Otherwise, the battery pack may be damaged.

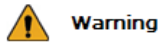


Do not use the laptop on top of carpet, blanket or bed.
The product may malfunction, cause a fire or burn the user due to temperature rise.



Read the directions printed on the battery pack carefully before use.
Keep the battery at room temperature. Refer to other Tips and directions in this guide to store the battery properly.

► Using AC Adapter



Warning



Do not use loose plugs or damaged power cords.
An electric shock or fire may occur.



Do not touch the power cord with your hands wet.
Otherwise, an electric shock may occur.



Pull the plug, not the cord, to disconnect the power.
Otherwise, a fire may occur or the product may get damaged.



Operate the product at the proper voltage.
Excessive voltage may result in damage on the product, electric shock or fire.



Use power outlets with an earth pin installed and proper supply of rated electricity.
An electric leakage may cause an electric shock or fire.



Plug the power cord tightly into the outlet.
Loose connection of the power cord could cause a fire.



In the case that a strange noise is heard from the cord or plug, disconnect the power cord from the outlet immediately and contact the service center.
A fire or electric shock may occur.



Never disassemble the power supply and adapter.
A damaged power cord may cause an electric shock or fire.



Use a socket with an earth pin equipped.
If not earthed, the product may cause an electric shock and get damaged.



Ensure that the power outlet is earthed before plugging in.
Otherwise, an electric shock from power leakage may occur.



Always keep the power cord and the outlet clean.
A fire may occur.



Do not impair the cord by bending or pressing it too hard. Keep children and pets from damaging the power cord.
An impaired cord could damage computer parts causing a fire or electric shock.



Disconnect the machine completely from others before cleaning it.
Otherwise, an electric shock or impairment may occur.



If the power circuit and machine are soaked, disconnect the battery, AC adapter, and all others before contacting the local service center.
Otherwise, an electric shock may occur.

► Using Notebook PC

Warning



Clean the computer with a proper agent and dry it completely before using it again.
If the computer is wet while used, an electric shock or fire may occur.



When lightning flashes in your area, disconnect the power, modem, LAN and other connections.
An electric shock or fire may occur.



Do not leave a cup or other containers filled with watery substance near the computer.
If the machine is soaked, a fire or electric shock may occur.



Do not connect the modem to a key telephone system.
A fire may occur or the product may get damaged.



If you have dropped or damaged the computer, disconnect the power and contact the local service center for a safety check.
If a damaged computer is used continuously, an electric shock or fire may occur.



Do not put a lit candle or live cigarette on the computer.
A fire may occur.



The fluorescent lamps on the LCD panel contains mercury.
If you have contacted the liquid from the LCD panel, immediately wash the substance away with water. If you feel any slightest trouble, visit your doctor immediately.



If you smell or see smoke from the computer, stop using the computer and disconnect the power before contacting the local service center.
A fire may occur.

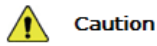


Do not play computer games too much.

Playing a computer game for an extensive time may cause a mental disorder. It could even inflict physical impairments on feeble people including children and the elderly.



You may hear noise while on 3D mode.



Do not leave any object such as a pen on the keypad.

You might break the LCD panel by unwittingly shutting it down with the object remaining on the pad.



Do not press or scratch the LCD panel with a sharp object.

It may cause an impairment.



Ensure the power is off before shutting the panel.

The machine may be deformed due to temperature rise.



The bottom of the computer gets hot when the system is working. Please avoid touching it and do not put it on your laps.



Do not impose excessive force on the LCD panel or drop it.

You could break the LCD glass panel.



Do not forcibly open the LCD panel with one hand.

The machine may be twisted.



To clean the LCD panel, use designated agents and soft cloth and rub the panel in one direction.
Too much force may damage the panel.



When handling computer parts, follow the instructions in the manual.
Otherwise, damage may be inflicted.



Do not put your finger or an object in the PC card slots.
An injury or electric shock may occur.



Install a vaccine program on your computer and do not download illegal programs nor access any corruptive web site such as those pushing pornographic contents.
The system may be infected and impaired.



Ask one of our engineers to run a safety check after your computer has been repaired.
Otherwise, an electric shock or fire may occur.



For minors, we recommend a program that blocks access to illegal or pornographic web sites.
Minors' exposure to adult-only contents may inflict psychological instability or even trauma on them. Take an extra precaution for your children if the whole family is using this machine.



Do not press Eject button while the CD-ROM drive is running.
The data may be lost or the disk may spin out unexpectedly to cause an injury.



Keep the machine away from heat-emitting devices such as a heater.
The product may get deformed or catch on fire.



Do not insert other devices than designated ones in the ports.
Otherwise, the product may get damaged.



Do not use a damaged CD-ROM disk or floppy disk.
It may cause product damage or physical injury.



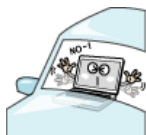
Prevent children from thrusting their finger in the CD drive tray.
The finger may be stuck in the tray and injured.



To remove a CD, turn off the CD program and when the drive lamp is off press Eject button.
Otherwise, the fast spinning CD may spring out of the tray and hurt you.



Do not block the ventilation hole on the sides with any object.
Otherwise, an electric shock may occur.



Do not leave the machine in a car.
The battery may cause an explosion or fire.



Avoid using a wireless LAN connection within the 5m radius of a microwave or plasma lamp. If you have to use wireless LAN and a plasma bulb within the range, however, do it through a channel between 11 and 13.
The transmission rate may drop even if the connection is made.



Turn off the computer if you are not going to use it for an extended time period.
It may overheat the battery.

► Upgrading Notebook PC

Warning



To upgrade the machine, turn off the system and disconnect the power cord and the battery. Disconnect the telephone line linked to the modem, if any.
An electric shock or fire may occur.



When you disassemble and upgrade the machine, prevent children from swallowing any parts including bolts.
If a child swallowed a nut, they may get suffocated.
In that case, see the doctor immediately.

Caution



Please use parts certified by **LG Electronics Inc.**
Otherwise, a fire or product damage may occur.



Consult our service engineer before you use a peripheral device not manufactured by **LG Electronics Inc.**
The product may get damaged.



Do not disassemble or moderate the machine arbitrarily.
You could get an electric shock and would not be able to receive the warranty service for that.



Handle devices and parts of the machine with care.
The product may get damaged.

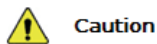


Ensure that everything including the case is reassembled completely before connecting the machine to the power.
Any exposed part may give you an electric shock.



Do not drop any part or device of the machine while disassembling it. If dropped, it may be damaged and cause an injury.

► Carrying Notebook PC



Caution



To carry the machine, turn off the power and disconnect all the cables. Otherwise, you may trip over the wire, damaging the computer and getting an injury.



During air traveling, follow the directions of flight attendants. Using a laptop during flight may cause an aircraft accident.



Do not carry the machine with the LCD panel open. Otherwise, the product may get damaged.



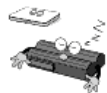
When leaving the machine in a car, keep it in shadow. The product may be deformed or caught on fire due to temperature rise.



Protect the machine from any shock while carrying it. System damage or an injury may result.



Carry the machine in a bag designed for it. Carrying it in an other type of bag may result in product damage.



If the machine is not used for a long time, remove the battery pack and discharge electricity to store them. That way, the battery can maintain the optimal state.



Do not leave the powered-on computer in a space without enough ventilation (i.e. bags) for an extended or repeated time.
The battery may overheat and cause a fire.

▶ Safety Notes to Prevent Data Loss (HDD Management)



Caution



Handle the computer with care to prevent a data loss.
Since the hard disk is sensitive to shocks, please make a back-up file of important data all the time.
The manufacturer will not be responsible for any hard-disk data loss caused by your mistake.

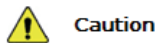


Hard disk damage and data loss may occur when:
External shocks are inflicted on the machine while disassembling or installing it.
When the computer is abruptly reset (rebooted) due to power failure, the hard disk may get damaged.
The computer is infected with a virus, tainting the data irrecoverably.
Abrupt turning-off of the computer can damage the computer.
Moving, shaking or pounding the computer while the hard disk is running, and thus causing file damage or bad sectors.



It is recommended to back up the data to minimize damage caused by hard disk damage.
The manufacturer is not responsible for any data loss.

▶ Safety Precaution for **Windows Vista** Capable PC Use



Caution



Windows Vista Capable PC provides an environment where users can enjoy remarkable advancements in information structuring and searching, security, and stability. However, not all computers with the **Windows Vista** Capable PC logo can support the full range of **Windows Vista** features. More powerful hardware combination is required for some premium features of **Windows Vista** as in the case of **Windows Aero**.

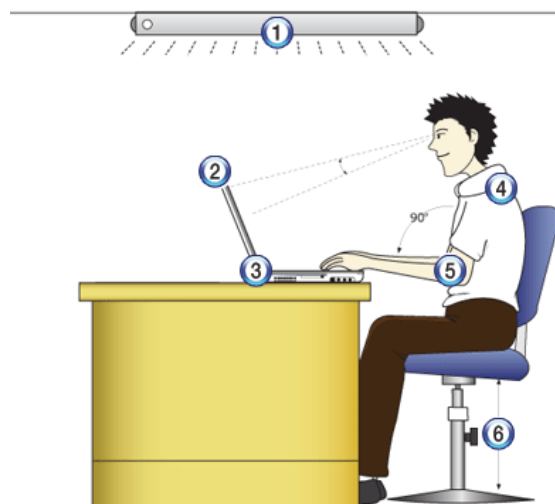
Windows Vista Capable PC has to be equipped with the required or more powerful parts to work flawlessly.

Although the machine bears the **Vista Capable** logo, the cost of upgrading **Windows Vista** OS is charged to the owner.

Those other computers without the **Windows Vista** Capable logo

For more information, refer to <http://www.windowsvista.com/getready>.

- ▶ When using the computer, sit in the good posture as shown below.



1. Do not have light directly reflected on the monitor.
2. Set the upper part of the screen to be on the even level with or slightly lower level than your eyes.
3. Adjust the screen while avoiding illuminated reflection.
4. Stretch the neck and back straight.
5. Keep the hands, wrists, and arms horizontally.
6. Adjust the chair to set the hands and arms properly for the keyboard.

**Warning**

- Long time use of computer may cause physical fatigue.
- A 10 minutes break after 50 minute use is desirable. Avoid using the computer more than 2 hours a day.
- Take a rest regularly and stretch your body.

▶ Adjusting volume (headset and speakers)

Check the volume before listening to music



- Before using the headset, check if the volume is too high.
- Do not use the headset too long.

▶ System Protection Feature

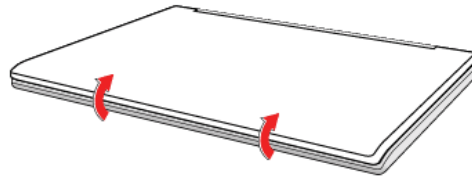
When the internal temperature rises, the System Protection feature automatically hibernates or turns off the computer. The computer may not be turned on until its temperature falls to the normal degree.

Chapter 2. Notebook PC Tour

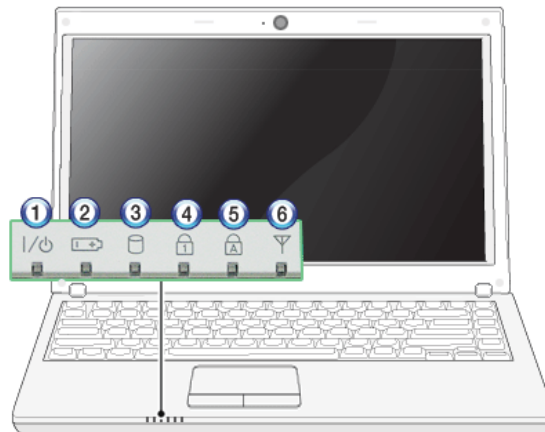


2-1. Opening/Closing Notebook PC

1. Raise the Notebook PC cover upward.
 - ※ Adjust the angle for the best convenient position.
2. Be sure to close the computer after use.



2-2. Operation Status Lamps



1. Power Lamp:

- Blinking: System Standby
- On: The system is running on the AC power or battery.
- Off: The system is turned off or in Hibernates.

2. AC Power and Battery Status Lamp

- Orange: The battery is being charged.
- Orange/Green Blinking: Charged more than 90%
- Off: The AC adapter is not connected and the battery is being discharged.
- Green: The AC adapter is connected and the battery is not in charging stage, or the battery is fully charged.
- Green Blinking: The battery is charged less than 10%
- Red Blinking: In faulty state
- If you try to turn on the system that has entered the Hibernates mode or been turned off after a low-battery alarm, the system will not be turned on but the lamp will blink three times.

3. Hard Disk Drive Lamp

- The lamp is turned on when the HDD is running.
- ※ Do not turn off the power forcibly while the hard disk drive lamp is on. Otherwise, the data may get impaired.

4. Num Lock lamp

- When the **Num Lock** lamp is turned on, you can enter numbers (0~9) using the embedded numeric keys. If you press **[Fn] + [Num Lk]** again, the **Num Lock** lamp is turned off and you can enter text characters.

5. Caps Lock lamp

– **Caps Lock** lamp is on when the it is active. When this lamp is on, you can type uppercase letters without holding **Shift** key.

6. Wireless LAN lamp

– Off: Wireless LAN is not in use.


– Blinking (short interval): Wireless LAN/Bluetooth is connected and data are being transmitted.

– Blinking (every 2 ~ 3 seconds): Wireless LAN/Bluetooth is not connected but Wireless Radio is on.

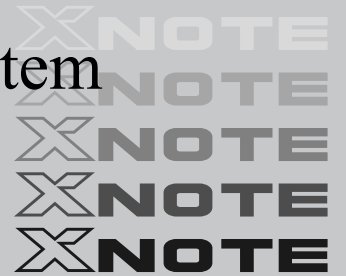
– Blinking (every 3 ~ 4 seconds): An access Point is being searched for to connect Wireless LAN/Bluetooth.

– On: An access point is being searched for or Wireless LAN is connected.

※ The Wireless LAN/Bluetooth lamp may operate differently depending on model type.

※  The Wireless LAN card and the Bluetooth device are optional, and so it may not be supported in some models.

Chapter 3. Using the system



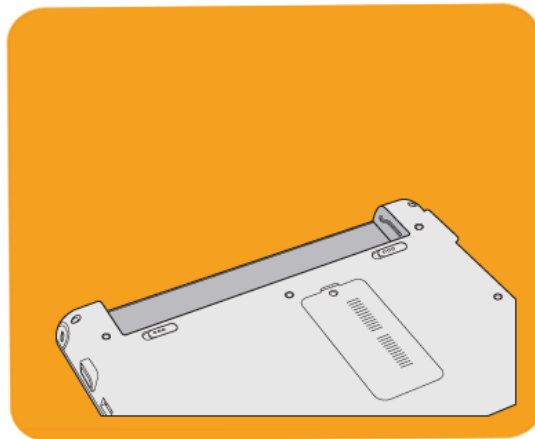
3-1. Running on Battery

Notebook PC runs on AC power or battery. This section describes the procedure that the user should take initially for a new system. The provided AC adapter can be used on both 100V and 240V.

Charge the new battery with the AC adapter before use.

※ Refer to [Charging Battery with AC Adapter] in User's Guide.

1. Turn the machine over to see the battery pack chamber and equip the pack.
 - Insert the battery pack into the chamber as shown in the following figure and push it in the direction of the arrow until you hear a clicking sound.

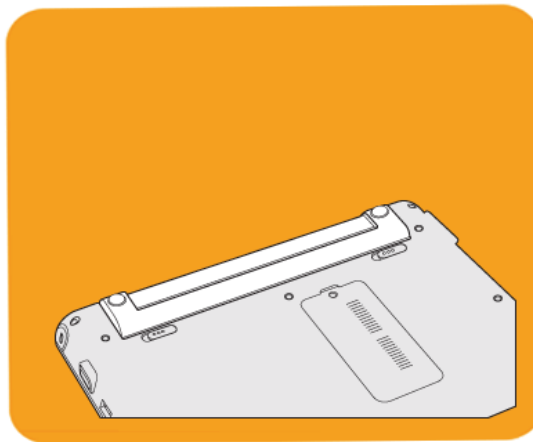


2. Open the machine and turn the power on.
3. Check the battery state.

- When the battery status lamp is blinking, charge it fully with the AC adapter before using it.



4. Remove the battery pack as shown in the diagram below.



Caution

Use batteries certified and acknowledged by LG Electronic Inc.

- Uncertified batteries may explode.
- Ensure the power is off before changing the battery pack.

Keep the battery pack removed when the machine is not in use.

- Otherwise, a fire and product damage may result.

**Warning****For a safe and efficient use of battery, follow the below directions.**

- Do not short-circuit the battery.
- Keep the room temperature between 0°C and 60°C. Do not expose the machine to the heat hotter than 60°C.
- Keep the battery out of reach of children.
- A visible swelling of the battery pack indicates a possible danger. When this occurs, contact your local vendor or service center immediately.
- Use only a certified and designated recharger.
- Keep the battery pack away from heat. (Never put it in a microwave.)
- Do not leave inside a car under the summer heat.
- Do not leave or use at a hot and humid place like a sauna.
- Do not use the machine placed on a heating blanket or other heat reserving materials.
- Do not leave the machine turned on inside a closed space.
- Make sure that the power ports are not touched by any metallic objects like a key, coin, necklace, and watch.
- Use only a lithium secondary battery certified and guaranteed by mobile device manufactures.
- Keep the machine dry.
- Do not disassemble or alter the battery pack.
- Before using this machine, read this guide carefully.

**For more efficient use of the battery, read the following carefully.**

- Natural discharge: The battery runs low naturally even if it is kept unused.
- Periodical full (dis)charge: Repeated recharge in midway shortens the running time gradually. To lengthen the span, charge and discharge the battery to the fullest once or twice. For optimal use, execute the full charge/discharge every 30 to 60 days. Still better, recharge the battery after it has run out.

The battery capacity may change due to chemical reactions during charge and discharge.

- The system checks the charge status of LG batteries frequently, and then calculates and indicates the actual battery duration on the current system setup.
- The battery is wearable goods and thus the life span may be getting shorter as used. The battery running time may also become shorter accordingly.
- When the battery is fully charged the machine stops recharging, and it resumes recharging when the battery charge rate drops below 95%.
- The Battery Charging lamp may be turned off even when the battery is not fully charged, and it may blink in orange even when the battery is fully charged. This happens because of measures designed to prolong the battery life and the time gap between charge state recognition and charge state update. You don't need to worry about this because it returns to normal in a while.
- When the temperature of the battery drops below 9.6, it is charged in a low current. In this case, charging time may stretched to 32 hours or longer.

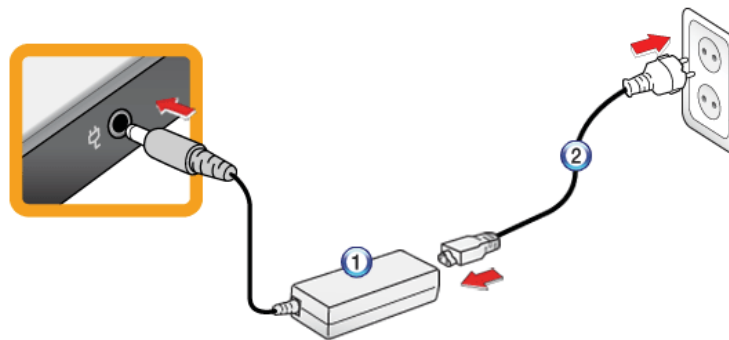
3-2. Charging Battery with AC Adapter

Notebook PC runs on AC power or battery.

This section describes the procedure that the user should take initially for a new system.

※ The provided AC adapter can be used on both 100V and 240V.

1. Connect the AC adapter to a power outlet with the power cable.
2. Connect the AC adapter to the power port of the notebook PC.



1. AC Adapter
2. Power cable
3. Adjust the LCD panel to the most comfortable angle.
4. Press the power button to turn on the machine.



■ You need a different plug to use the AC adapter on 110V. (The extra plug for 110V is sold separately.)



Caution

Do not leave a liquid container on the computer.

- The system may be short-circuited and damaged.



Warning

Please use an AC adapter certified by LG Electronics.

- Otherwise, an explosion or fire may occur.
- It may cause a problem in battery charging or system operation.

3-3. Registering Windows

Ensure that the AC adapter is connected or the battery is charged before turning on the machine.
Refer to the below directions to turn on/off the machine.

▶ Turning On

1. Open the machine and adjust the panel.
2. Press Power button and self-diagnosis begins. After self-diagnosis, **Windows XP** home screen appears.
3. Registering the User with **Windows XP Home Edition/Professional**
 - In the initial use, after turning on the system the user is required to register himself with **Windows XP**. For user registration process, refer to the following. (The process may differ by system model type, but that difference does not affect the system use.)

▶ Registering the User with **Windows XP Home Edition/Professional**

In the initial use, after turning on the system the user is required to register himself with **Windows XP**.

For user registration process, refer to the following. (The process may differ by system model type, but that difference does not affect the system use.)

1. When the [Welcome to Microsoft Windows] screen appears, click **Next**.



2. When **[End User License Agreement]** appears, read it carefully, select **Yes, I accept. (Y)** and click **Next**.

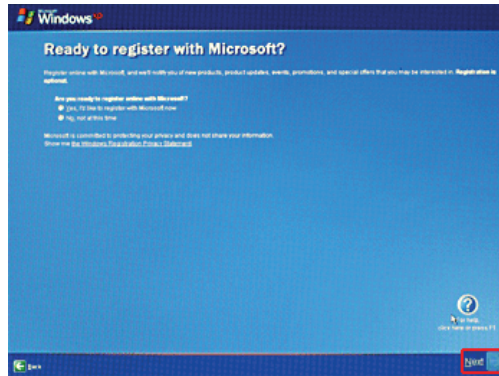


3. The **[Please specify a computer name.]** screen appears. Fill in **Computer Name (C)** and **Computer Description (O)** fields and click **Skip** button to continue.

※ To set up the Internet, click **Next** and continue.



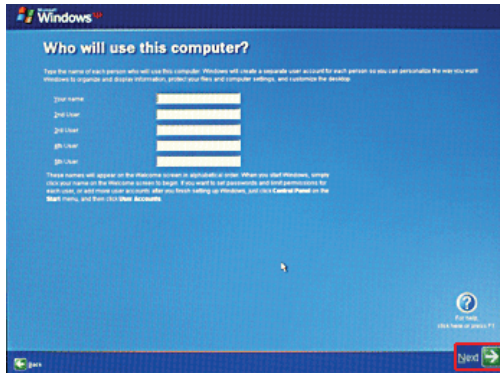
4. When the [Register with Microsoft?] screen appears, select **No, not at this time. (N)** and click **Next**.



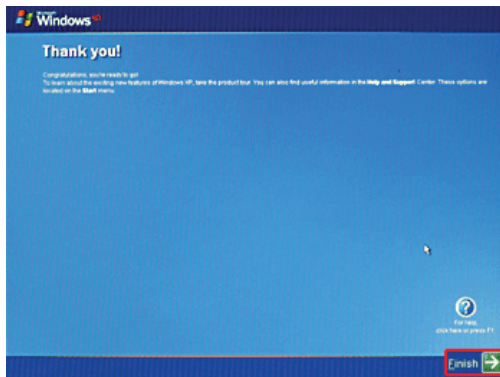
5. When the [Help protect your PC.] screen appears, select "Help protect my PC by turning on Automatic Update now" and click **Next**.



6. When the [Type the user name] screen appears, enter your **User Name (Y)** and click **Next**.

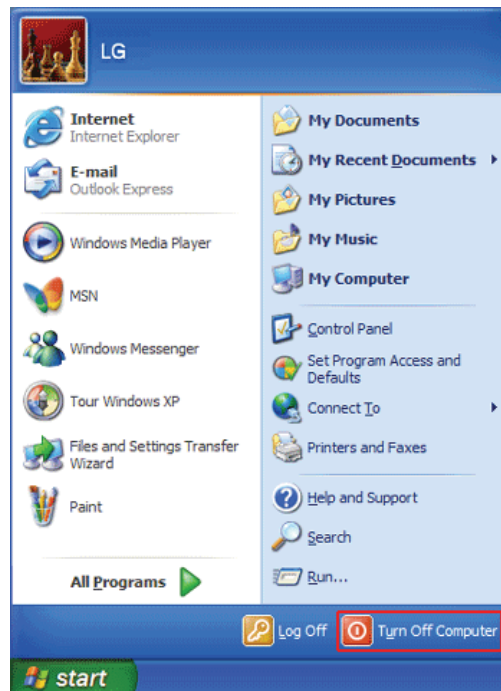


7. When the [Thank you] screen appears, click **Finish (F)**. Now, you have completed the installation process.

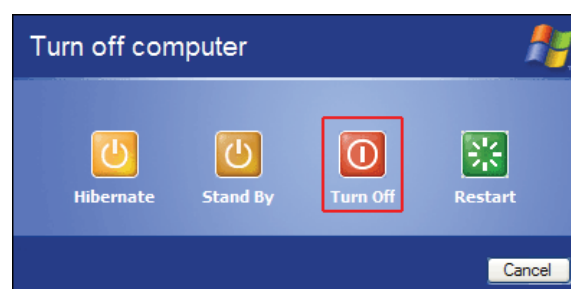


► System Termination



1. To turn off the computer, close all applications and on the **Windows XP** home screen click **Start** and **Turning Off Computer**.



2. When the [Shutdown Computer] screen appears, click **Shutdown**.



3. The computer turns off automatically
4. Close the computer.

	Caution	<p>Do not turn off the power forcibly while the hard disk drive lamp is on.</p> <ul style="list-style-type: none"> ■ The data may get damaged.
	Warning	<ul style="list-style-type: none"> ■ Occasionally the system on Windows may not be shut down automatically. When this happens, press Power button for five seconds or longer to forcibly shut down. However, this is an emergency measure and it may cause system errors. It is recommended to click the Start button and select [Turn off Computer] menu to shut down the computer. ■ Abnormal turning-off of the computer may damage data stored in the hard disk. When the program suddenly stops, press the Ctrl + Alt + Delete keys to terminate the program through Windows Task Manager or restart the system. If the some Windows program files have been damaged due to an abnormal shutdown, reinstall damaged programs. LG Electronics is not responsible for data loss caused by your mistakes and negligence.

3-4. Windows XP Overview

Windows XP is stylish, novel, and easy to use. The desktop and task bar images are simplified, and you can easily access applications through the Start menu.

There are more Desktop options for you to customize the environment.

► Windows XP Tour

Windows is an operation system based on which a computer runs. It is recommended to learn the basic functionality of **Windows** for better use of a computer.

1. Click **Start** button and click **Windows XP Tour**.
2. When the window appears, select a **Windows XP** feature item to view detailed description.



3. **Minimize** button
4. **Maximize** button
5. **Close** button

► Windows XP Desktop



1. **Start button**
 - Unfolds Start menu when clicked.
2. **Start menu**
 - Includes programs needed to start Windows.
 - Clicking All Programs displays the list of all programs installed on the system.
3. **Taskbar**
 - Shows all currently running programs.
4. **Toolbar**
 - Clicking the icon switches the language to another such as **Korean/English**.
 - The user can add or delete various toolbars.
5. **Taskbar icons and clock**
 - Allows you to set up resolution, **Power Management** and other basic configurations.
6. **Recycle Bin**
 - Keeps dropped files and folders. Empty **Recycle Bin** deletes files and folders in **Recycle Bin** from the computer.
 - ※ Deleted files and folders can not be restored.

► Start menu

Includes all programs needed to start **Windows**.

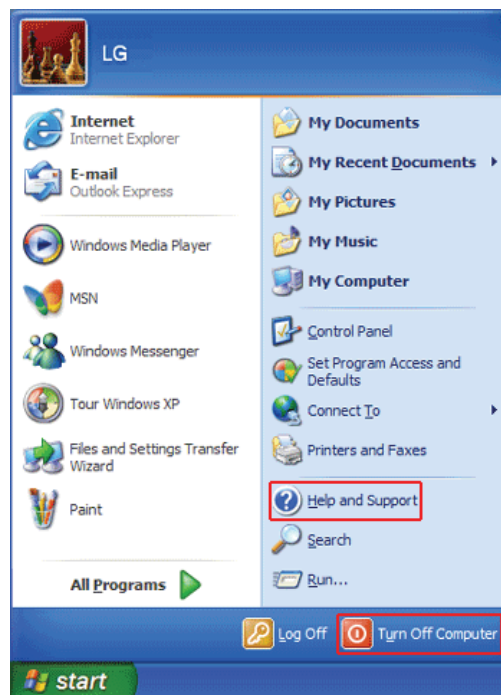


1. Fixed Items
2. Recently Used Programs
 - The order of the programs is subject to change.
3. All Programs
4. **Start**
 - Allows you to easily access most commonly used programs.
5. **My Documents**
 - Keeps your documents.
6. **My computer**
 - Displays information on drives and networks and allows you to retrieve or execute files and folders.
7. **Control Panel**
 - Allows you to customize computer settings.

► Help and Support

Allows you to learn about **Windows** use and get troubleshooting information and technical supports. Please read the menu before using the computer.

1. Click **Start** button and **Help and Support** on **Start** menu.



2. Then, the following screen will appear.



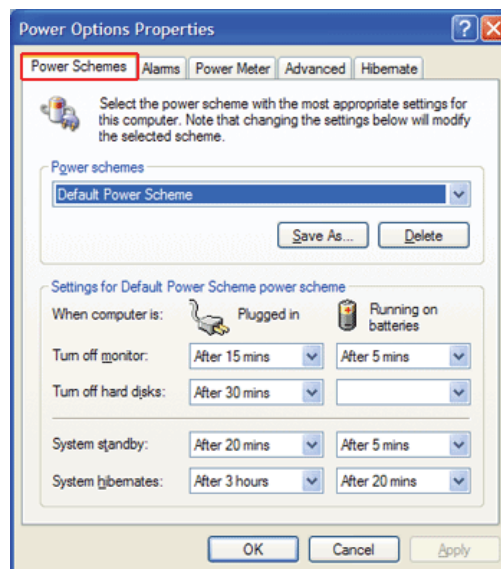
1. Allows you to search for wanted items through such methods as **Suggested Topics**, **Full-text Search Matches**, and **Microsoft Knowledge Base**. **Microsoft Knowledge Base** is supported only when the Internet is connected.
2. Helps you with many such troubles as learning about the features of **Windows XP** and getting troubleshooting information through appropriate items.
3. Through the Internet connection, you can ask others for a help and receive the telephone number of the technical support center.
4. You can configure the optimal environment for computers.

3–5. Windows XP Power Management

Windows XP has a self-power management feature. With that, you can lower the power consumption of Notebook PC.

► Power Option Registration Information

1. On the home screen, click **Start** button and **Control Panel**.
2. Double-click **Control panels | Switch to Classic View | Power Options** icons.
3. When **Power Option Registration Information** window appears, on **Power Schemes** tab, customize the power management settings for the user environments.



- To find appropriate power management settings for Notebook PC, just select **Mobile Phone/Laptop** in **Power Schemes** dropdown menu. Then decide detailed time frames for **Turn off monitor**, **Turn off hard disks**, **System standby**, and **System hibernates** in **Power Schemes** settings of **Minimal Power Management**.
- In **System Standby**, the monitor and hard disks are turned off to save power.
- In **System standby**, currently worked-on data is not stored on the hard disk and so save it before entering into the standby mode.
- In **System hibernates**, the computer is turned off after all the data on the memory has been saved on the hard disk.

**Caution**

- If you execute **System standby** or **System hibernates** while playing a computer game, a serious error may occur. Be sure to end the game before entering into **System standby** or **System hibernates**.

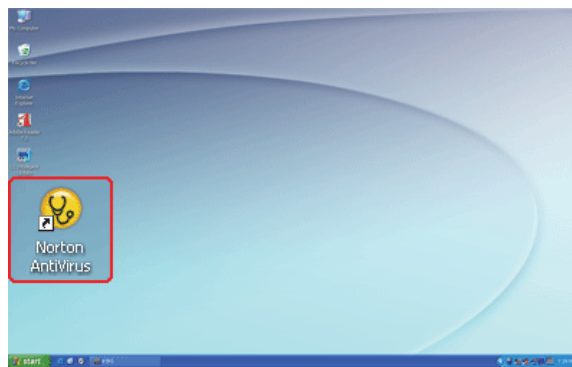
3-6. Scanning Computer Viruses

Computer viruses are programs that penetrate other programs and files. Computer viruses infect other files through replication, leaving the infected files and programs damaged and unusable. The Notebook PC comes with a vaccine program called **Norton AntiVirus**. You can use **Norton AntiVirus** and **LiveUpdate** free of charge for 90 days.

- ※ The displayed image can be modified without prior notice.
- ※ **Norton AntiVirus** can also be installed using **LG Intelligent Update CD**.

▶ Installing and Registering Norton AntiVirus

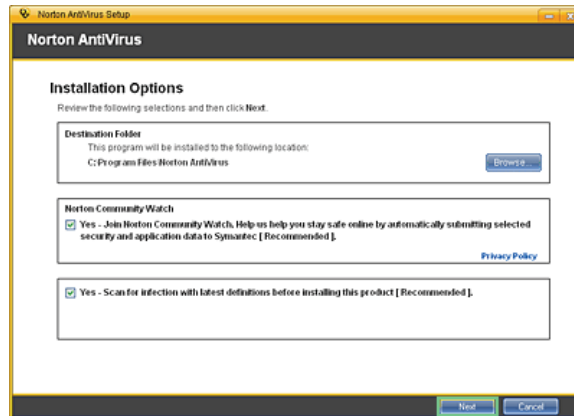
1. Complete **Windows XP User Registration** and turn on the machine.
2. Double-click the **[Install Norton AntiVirus]** icon on the desktop.
 - ※ **Norton AntiVirus** can also be installed using **LG Intelligent Update CD**.



3. When the **Norton AntiVirus** license agreement screen appears, read the agreement and click **[I Agree]**.



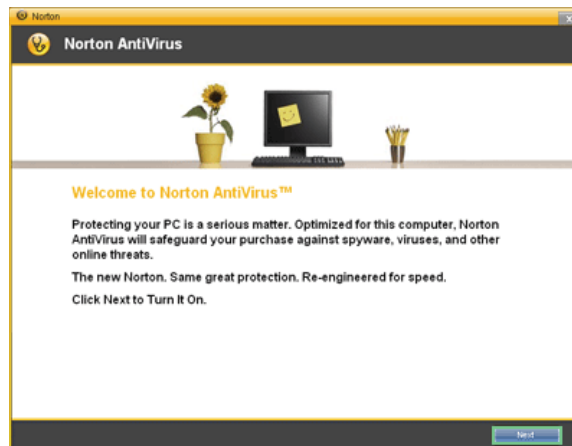
- When the **Norton AntiVirus** installation screen appears, select the destination folder to install the program and click **[Next]**.
- ※ When the **Microsoft Windows installer** update window appears, install the update. (You need to be connected to the Internet to install **Microsoft Windows installer**.)



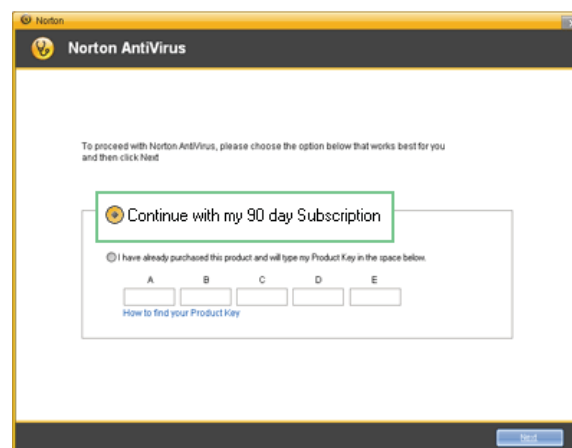
- The installation program starts to install **Norton Antivirus**.



6. When the installation of **Norton AntiVirus** is finished as below, click **[Next]**.



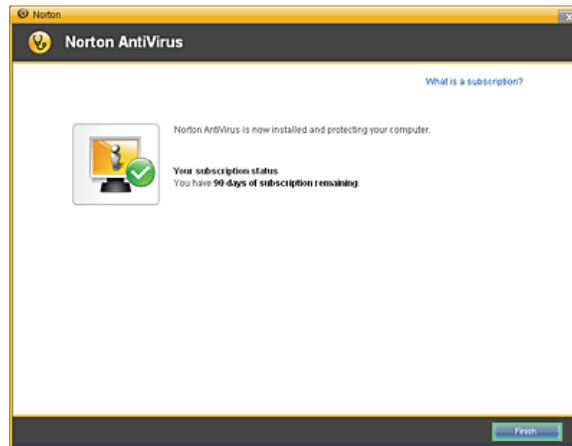
7. When the following screen appears, select **[Continue with my 90 day Subscription]** and click **[Next]**.



8. When the following screen appears, click **[Finish]** to complete the installation.

※ If the system is connected to the Internet, the user registration screen may appear. If you want to register the program, fill in the form as

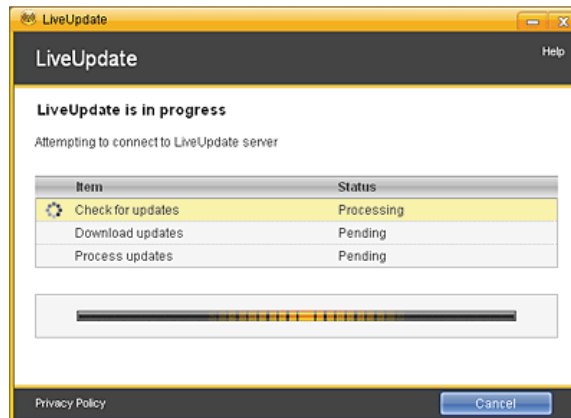
instructed on the screen and click **[Next]**. If you don't want to register, click **[Skip]**.



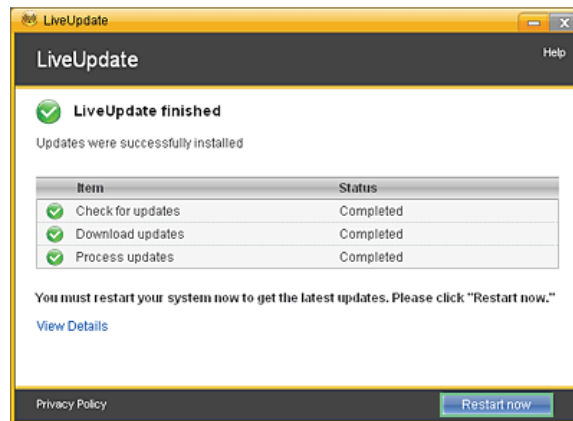
► Updating Norton AntiVirus

A modem or LAN card must be installed in the computer to update **Norton Antivirus**. Update is available only through the Internet.

1. Click **Start** on the taskbar and select **All Programs** > **Norton AntiVirus** > **LiveUpdate**.
2. **LiveUpdate** downloads and installs the update automatically.

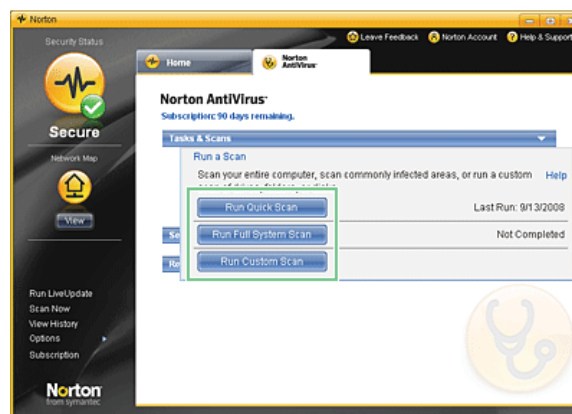


- When the update is complete, click **[Restart]** to reboot the system.



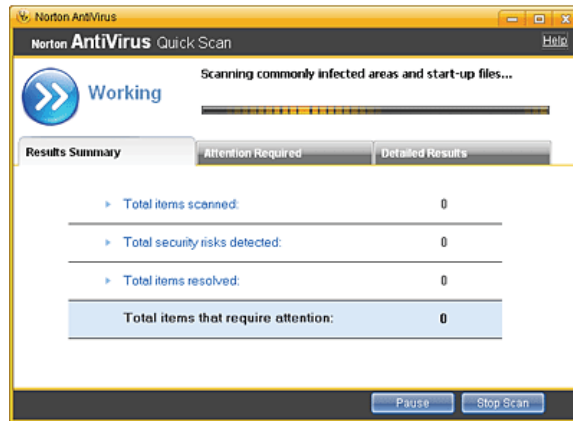
► Scanning Viruses with Norton AntiVirus

- Double-click the **Norton AntiVirus** icon on the desktop, or click [Start] > **All Programs** > **Norton AntiVirus** > **Norton AntiVirus**.
- In the **Norton AntiVirus** tab, click **[Task & Scans]** > **[Run a Scan]**, select the scan method, and start the scan.

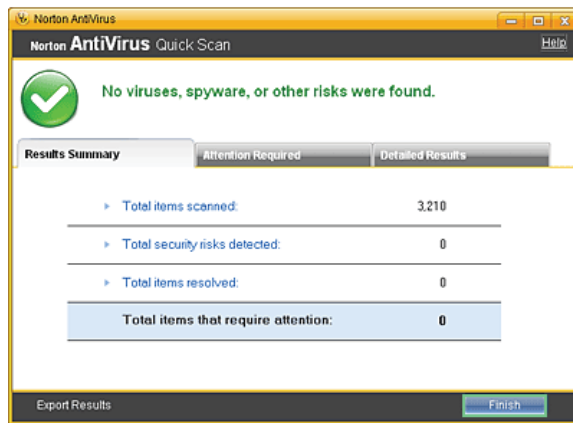


- Scan is performed and the result is displayed.

※ If the system is infected with a virus, the Repair window is displayed. Follow the instructions on the screen to repair the infected files.



4. When the scan is complete, click **[Finish]** to exit the program.




3-7. CyberLink YouCam

CyberLink YouCam is the program that can take picture or moving images through the **Web Camera**.

- ※ The figures herein are subject to change without prior notice.
- ※ **Optional Web Camera** is optional, and so it may not be installed in some models.
- ※ For more information about its operations, refer to the Help of **CyberLink Youcam**.



► Using Cyberlink YouCam

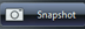
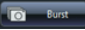
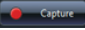




1. Double-click the **CyberLink YouCam** Icon  on the Desktop to run the program.
2. The main windows of **CyberLink YouCam** appears as follows..



3. **Viewer**: Displays the **Webcam** screen.
4. **Image Gallery**: Use to record pictures and moving images, play back or delete those images.
5. **Animation Effect menu** Can add a frame and animation effect on the screen.
6. **Frame / Animation Effect menu** Can add a frame and animation effect on the screen.

► Major Buttons

1.  **Open Emotion Pictures** Opens various emotion picture files.
2.  **YouCam Environment configuration** Configures the environment for **YouCam**.

3.  **Snapshot** : Takes pictures.
4.  **Burst** : Takes pictures continuously.
5.  **Capture** : Takes moving images.
6.  **YouTube** : Uploads the taken moving images to **YouTube**.
7.  **E-Mail** : Sends the taken pictures or moving images through E-mail.
8.  **Recycle Bin** : Deletes the taken pictures or moving images.
9.  **Help**: Displays the help windows for **YouCam**.

3-8. Using Battery Miser

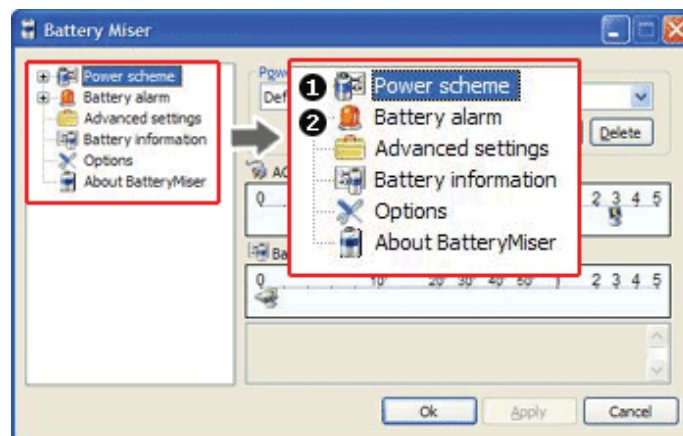
Battery Miser is a program that manages the power saving features to use the battery for the longest possible hours. When used with **Windows** Default Power Management Features, **Battery Miser** provides its unique power management features in addition.

※ For more detailed information, see the **Help** menu of **About Battery Miser**.


1. Double-click the **Battery Miser** icon on the taskbar.



2. **Battery Miser** Home Page like follows appears.



1. **Power Schemes** : A list of settings for power use management to reduce power consumptions on every part of the system.
2. **Battery Alert** : A power option where the user can set the system to sound the alarm when the battery is running low or worse.

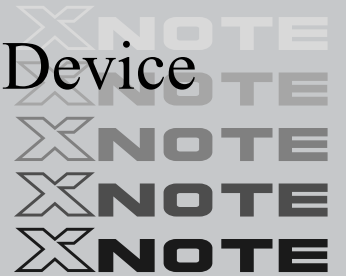


- Click the Battery Miser icon on the taskbar to open the power configuration select menu. Use this menu to change the power configuration.
- Click **[Fn] + [F10]** to display **Battery Information**.

This device supports 2 types of charging method. Execute **Advanced Settings** of **Battery Miser** to select the charging method.

- **Quick Charging**: Can be charged much faster than Ordinary Charging.
- **Ordinary Charging**: Can be charged rather slow than Quick Charging.

Chapter 4. Input/Output Device

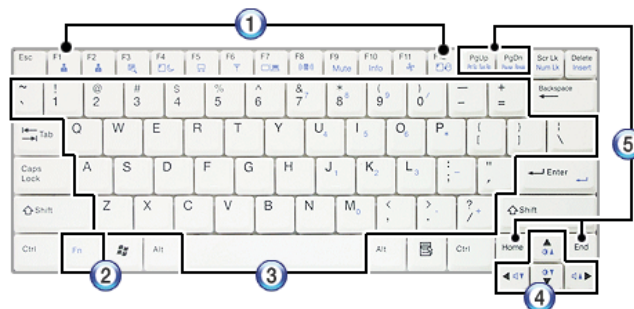


4-1. Using the Keyboard

The keyboard allows the user to input data or give commands.

► Keyboard Overview

The keyboard consists of character and numeric keys as well as function keys.



1. Function keys (F1 ~ F12)
 - The usage may differ by OS or applications types.
2. Fn key:
 - Works as part of hot keys if used with function keys.
3. Character and Numeric Keys:
 - Consists of keys, spacebar, numeric keys (0 ~ 9), and special symbol keys.
 - **Spacebar**: Inserts a white space per hit while you type.
4. Arrow keys:
 - Moves the cursor and others in their respective directions.
5. Pg Up and Pg Dn keys:
 - Moves a screened page up or down.

► Using Special Keys



1. **Esc** key

- Terminates or stops a program.

2. **Caps Lock** key

- Used to turn on **Caps Lock** lamp. When this lamp is on, you can type uppercase letters without holding Shift key. To type lowercase letters, press this key again. This does not apply to Korean characters.

3. **Shift** key

- used to type uppercase letters or as part of hot keys.

4. **Windows** key

- Allows you to select **Windows** Start button and open Start menu .

5. **Shortcut Menu Key:**

- Allows you to open the **Windows** shortcut menus. (The shortcut menus are the same as those you can see when right-clicking a file or folder.)

6. **Enter** key

- Used to inform the computer of the completion of one command or to change the line.

7. **Prt Sc** key (**Print Screen**)

- Prints or temporarily saves the current screen display.



Caution

- Spilling a watery substance like coffee or juice on the keyboard may cause a fault, malfunction, or electric shock.
- The keys may not work properly when you use several keys at the same time while playing a PC game. (Please change the key combination settings according to the combinations necessary for the game play.)



- Toggle **Caps Lock** key to turn the **Caps Lock** lamp ON or OFF and to maintain the **uppercase/lowercase** mode. The on/off status is displayed through the lamp on the notebook PC body.
- By holding **Shift** key, you can type uppercase letters when **Caps Lock** is off or lowercase letters when **Caps Lock** is on.

For more convenient use of Windows XP, remember the following Windows key combinations:

- Displays **Windows XP** Help.



- Displays "Search Result - Computer" window.



- Displays "Search Result" window.



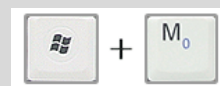
- Displays the execution screen.



- Selects the next window in order displayed on the taskbar.



- Minimizes the current window.



► Hot Keys:

By pressing the following key combinations at the same time, you can immediately start the designated features (such as adjusting the screen brightness).

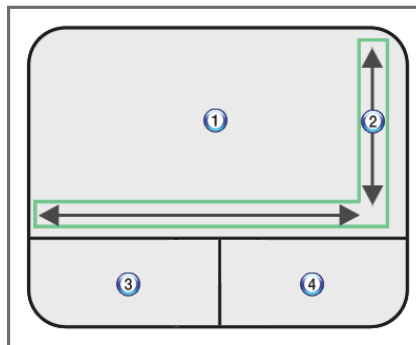
Fn + F1	Customizable hot keys. (Configurable through OSD settings)
Fn + F2	Customizable hot keys. (Configurable through OSD settings)
Fn + F3	Magnifying hot keys
Fn + F4	Executes the mode defined in the Windows Power Save Mode . (Example: Standby , Hibernate)
Fn + F5	When the user presses Fn + F5 keys, the touchpad mode alternates between Touchpad Disable , Touchpad Auto-Disable (upon connection of external USB/PS2 mouse), and Touchpad Enable in order. (Initialization takes 1 ~ 2 seconds. It is recommended to use after the initialization.)
Fn + F6	Turns the wireless devices (incl. Wireless LAN and Bluetooth) on and off (Bluetooth is optional, and so it may not be installed in some models.)
Fn + F7	Monitor toggle. If you have an external monitor connected to the computer, press Fn + F7 keys to rotate the display mode between LCD only , Monitor only , and LCD + Monitor both in order.
Fn + F8	Switches from SRS WOW HD to SRS TruSurround XT , to SRS Off for each pressing.
Fn + F9	Mute (Sound ON / Sound OFF)
Fn + F10	System Information . Displays summarized system information.
Fn + F11	Fan Control feature. Switches the cooling fan mode between Normal and Silent for each pressing.
Fn + F12	Hibernates (When OSD is installed)
Fn + ▲	Increases LCD brightness within a nine-grade range.
Fn + ▼	Decreases LCD brightness within a nine-grade range.
Fn + ◀	Turns down the volume.
Fn + ▶	Turns up the volume.
Fn + Num Lk	When the Num Lock lamp is turned on, you can enter numbers (0~9) using the embedded numeric keys. If you press [Fn] + [Scr Lk] again, the Num Lock lamp is turned off and you can enter text characters.

Fn + PgUp	You can enter [Prt Sc Sys Rq] button.
Fn + PgDn	You can enter [Pause Break] button.
Fn + Delete	You can enter [Insert] button.

4-2. Using the Touchpad (and Mouse)

The touch pad is equipped with the scroll feature and can function as a wheel mouse. The touchpad is compatible with the USB-type mouse in software. The touchpad functions same as the USB-type mouse and is very useful for a program supporting mouse use like the **Windows**.

※ The touchpad and a USB-type mouse can be used together on the same system.



1. Touchpad
 - Moves the cursor.
2. Scrolling area
3. Left button
 - Used to select or execute programs.
4. Right button
 - Functions as the right button of a mouse in most cases. However, the usage may differ depending on programs.

► Moving the Cursor (Pointer) on the Screen

Place a finger on the touchpad and glide the finger.



► Click (Select)

Press and release the left button swiftly. (Or tap the touchpad once.)

Do this, for example, to select a menu or icon and to place the cursor to type on a word processor file.

► Double-click (Execute)

Press and release the left button twice swiftly in a series. (Or tap the touchpad twice swiftly in a series.)

Do this, for example, to run a program after selecting its execution file (or icon).



Caution

Notes on Using the Touchpad

- Do not use a sharp object such as a pen on the pad nor peel the cover. It may cause an impairment.
- Do not place more than one finger on the pad nor use it with your hands wet or covered with gloves. The touchpad may not function normally. Oil or dirt at the finger tip can also cause an impairment.
- The touchpad is sensitive. Do not impose an excessive pressure on it. Use the touchpad in a comfortable posture not to do any harm to your finger or wrist.

► Drag/Drop

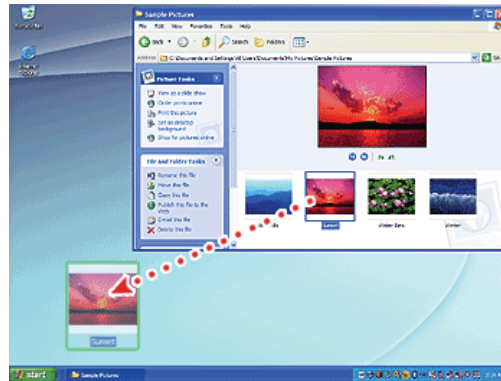
To drag, click and hold an icon, for example, and move it to another location.

To drop, leave a dragged icon to another location.

To move a file icon, for example, to another folder or to **Recycle Bin**, place the cursor (or the pointer) on the icon, press and hold the left button, and glide another finger on the touchpad until the icon reaches the aimed location. After reaching the destination, release the left button.

1. Drag

- Glide one finger on the pad with another finger pressing and holding the left button.
2. Drop
- Release the left button to drop. (By doing this, you could drop a file into **Recycle Bin**, if you want to.)



► Click-free Dragging

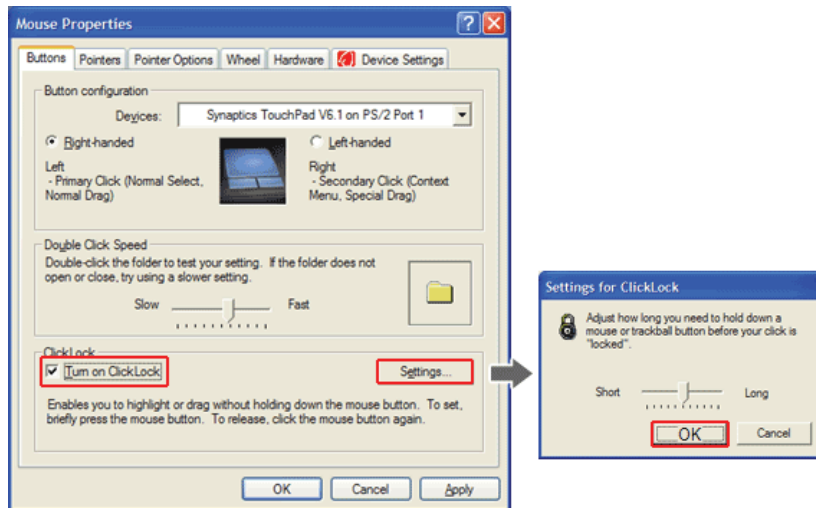
When activated, this feature allows you to drag an icon without pressing and holding the left button.

Do the following to activate the click-free dragging feature. If it has been done, pressing the left button for an extensive time replaces pressing and constant holding so that you can drag without holding the left button.

1. Click [Mouse Properties] icon in Notification Area.



2. Select Activate click-free dragging (T) and click [Setup] button to adjust the time span for which you should press the left button to execute the feature.

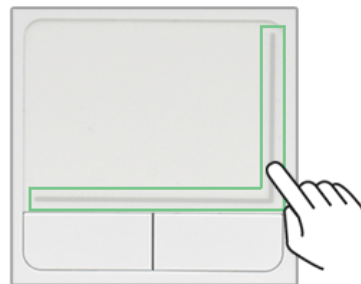
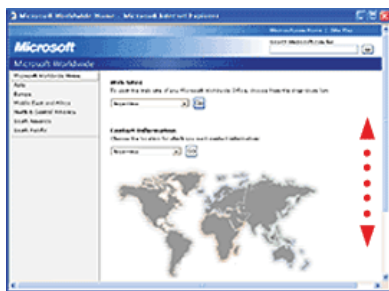


► Scrolling

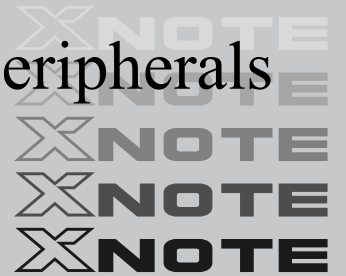
The touch pad supports the scrolling feature.

To scroll vertically or horizontally, glide your finger along the right or bottom edge. Now the screen follows your finger movements if there is a scroll bar on either edge.

※ The width of scroll bar may differ by computer model type.



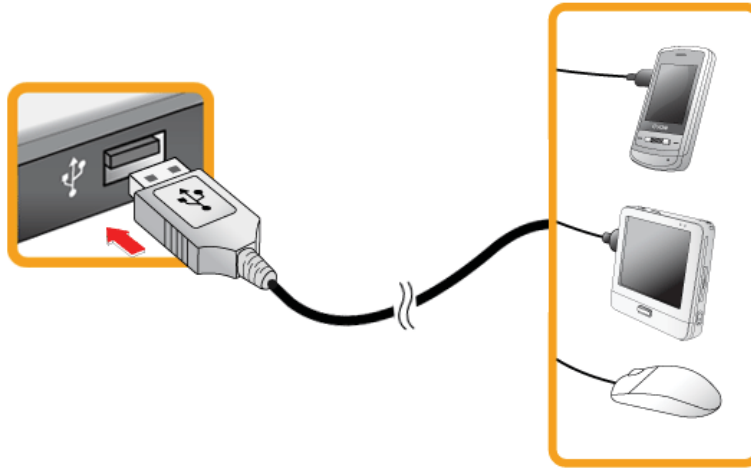
Chapter 5. Connecting Peripherals



5-1. Connecting USB 2.0

Following peripherals can be connected to the Notebook PC.

※ Those peripherals need to be purchased separately.



The notebook PC can be connected with other USB supporting devices such as USB keyboard, Hub, digital camera, etc.

5-2. Connecting Monitor



Monitor Toggle Features (Converting the Screen Using the Shortcut Key)

※ If you have an external monitor connected to the computer, press Fn + F7 keys to rotate the display mode between LCD only, Monitor only, and LCD + Monitor both in order.




- Ensure the monitor power is off before connect external monitor to the notebook pc.

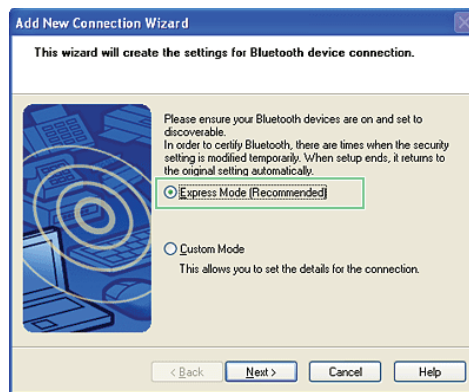
5-3. Using Bluetooth

Bluetooth establishes wireless connection between the **MS Windows** user and the various **Bluetooth**-enabled digital devices such as camera, cell phone, headset, printer, GPS receiver, etc.

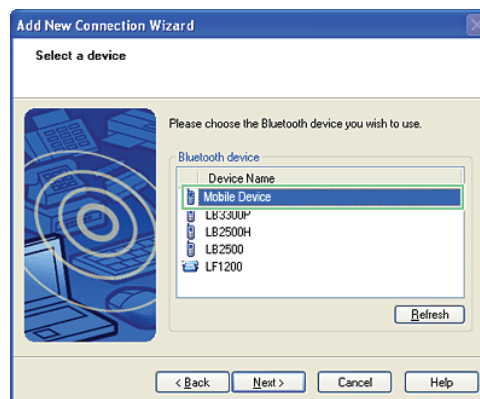
- ※ **Optional** **Bluetooth** is optional, and so it may not be installed in some models.
- ※ The images and contents of Using **Bluetooth** may differ depending on the **MS-Windows** version.
- ※ For more information, refer to the Help of the **Bluetooth** setup program.

► Searching for and Using **Bluetooth** Device

1. Double-click the "My **Bluetooth** neighborhood" icon in the desktop or the  icon on the right side of the task bar to run the Bluetooth Setup program.
2. When the following [Add New Connection wizard] appears, select [Fast Mode] and click [Next].

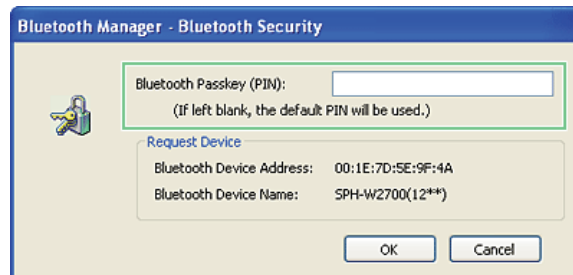


3. The following screen appears after searching for all **Bluetooth** devices. Select the device you want to use and click [Next].

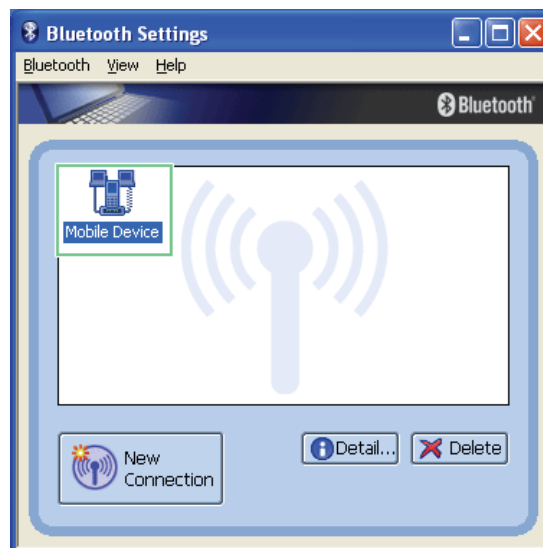


- When the following **[Bluetooth Manager-Bluetooth Security]** window appears, enter the password for the **Bluetooth** device.

※ For a password, you can use the password provided by the **Bluetooth** device manufacturer or you can set it yourself.



- When you added and connected the **Bluetooth** device, the corresponding icon and device name is displayed in the **Bluetooth Setup** program as follows:



5-4. Using Smart Link

Smart Link connects two PCs using a **Smart Link** cable. You can use **Smart Link** even if the PCs are not connected to the network, and you don't need any special configuration on the PCs to use it.

After connecting your notebook PC to a remote PC with a **Smart Link** cable, you can share the data in one PC with another. Also, if your notebook PC doesn't have an ODD, you can use the ODD in the remote PC.

- ※ Smart Link is optional, and so it may not be installed in some models.
- ※ Other USB devices such as HDD, ODD, MP3 Player, etc are not supported.

► System Requirements for Smart Link

System	Requirements
CPU	Intel Pentium III 1GHz or above
MEMORY	512MB or more
HDD	500MB or more
OS	Windows XP SP2, Windows Vista Family, Internet Explorer 5.5 or above (6.0 recommended)
USB	USB 2.0 or above ※ Smart Link operates in the USB network mode. Therefore, its speed is lower than that of USB 2.0.



Caution

Connect the Smart Link cable directly to the USB port.

- If you connect it to a port replicator or a USB extension cable, Smart Link may not work properly.

If the names of the two PCs are the same, Smart Link does not work properly.

- **Smart Link** requires unique names for the PCs to identify each PC. If the names are the same, the Smart Link program does not work properly.

Before you can upgrade the Smart Link ROM data, the notebook PC and the remote PC must be connected with a Smart Link cable.

- You can upgrade the **Smart Link** ROM data using **LG Intelligent CD** or **LG Intelligent Update**.

When two notebook PCs that support Smart Link are connected to a remote PC.

- The first notebook PC connected with **Smart Link** operates properly, but the second notebook PC connected with **Smart Link** does not work properly. However, the Smart Link program may not work properly in some situations.

When Smart Link does not work properly

- Remove the Smart Link program after disconnecting the Smart Link cable. Then reconnect the cable to use the program.

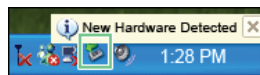
▶ Connecting Smart Link

It takes about 1 minute to 5 minutes depending on the notebook PC and the remote PC used before the **Smart Link** program starts to operate after connecting the cable.

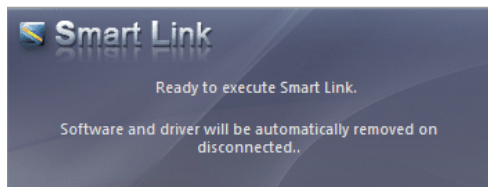
1. Connect the **Smart Link** cable to the **Smart Link** port of the notebook PC and the USB port of the remote PC.



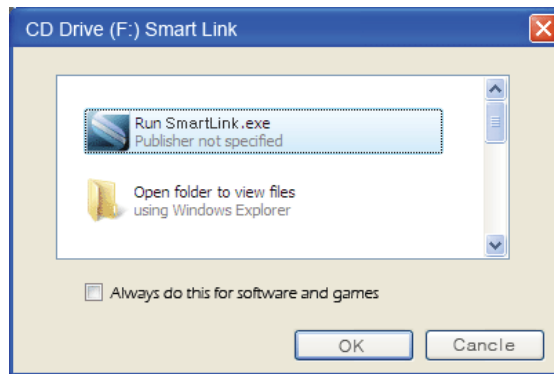
※ The USB device driver is installed automatically.



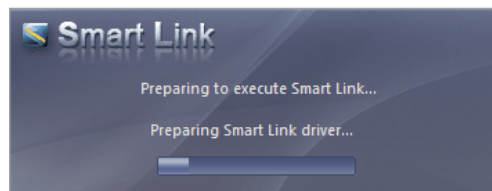
※ If the operating system in the remote PC is **Windows XP**, you have to disconnect the **Smart Link** cable, remove the Smart Link program, and reconnect the cable according to the messages displayed on the screen.



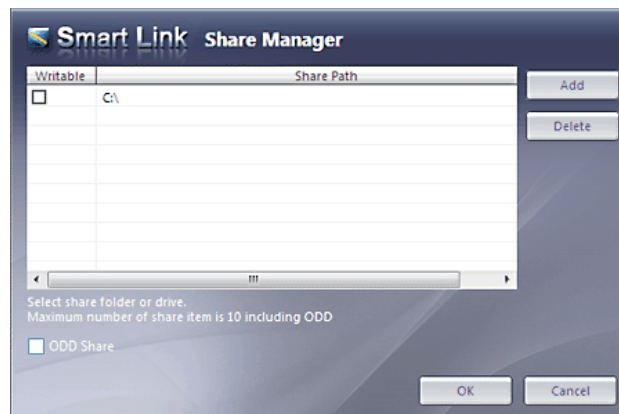
2. Start the SmartLink.exe file, which will guide you through the installation of the **Smart Link** program. Select [Allow] when the User Account Control window appears.



- ※ Once the **Smart Link** device driver is installed, the installation program starts the preparatory process for running the **Smart Link** program.



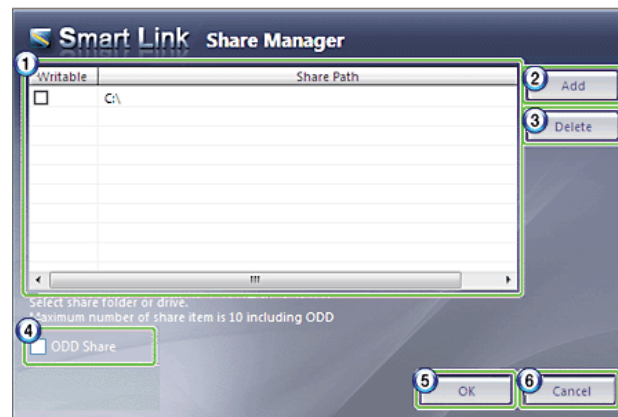
- ※ After the two PCs exchange information with each other, the connection process is completed and the Folder Sharing window appears automatically.



▶ Smart Link Folder Sharing Window

When the two PCs are properly connected with **Smart Link**, the following **Smart Link** Folder Sharing window appears.

※ The **Smart Link** Folder Sharing window appears automatically. If there is no input for approximately 5 seconds after the **Smart Link** Folder Sharing window appears, it closes automatically. If you want to reopen the **Smart Link** Folder Sharing window, double-click



1. List: You can set the read/write rights in the left panel. The right panel displays the path of the shared folder.
 - ※ When the checkbox is deselected, only the read right is granted. When selected, both the read/write rights are granted.
2. The Add button: You can add a folder to share.
3. The Delete button: You can delete a shared folder from the list.
4. Share ODD: This option is available when an ODD is installed. You can share the ODD by selecting the option.
5. The OK button: Saves the settings and closes the **Smart Link** Folder Sharing window.
6. The Cancel button: Discards the settings and closes the **Smart Link** Folder Sharing window.

▶ Sharing a Folder Using Smart Link

1. Click Add.
 - ※ The available local folders are displayed in a window.
2. Select the local folder to share and click OK.
3. Specify the read or read/write right for the selected folder and click OK.
 - ※ If you want to share an ODD, select the Share ODD checkbox.
4. Open the window for the remote computer. Shared local folders and ODD are displayed in the window.

Tip

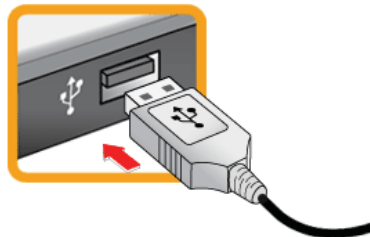
- To share a folder, you can also drag-and-drop the folder to the **Smart Link** Folder Sharing window instead of using the Add button.
- The Share ODD checkbox is not available if there is no ODD installed in the PC.
- You can only grant the read right for ODD.
- When you share the ODD, only its data can be shared. The media files in the disk cannot be played.
- You can share up to 10 folders including ODD using **Smart Link**.

5-5. Using External Drive (LGPC-ODD)

※ External Drive is optional, and so it may not be installed in some models.

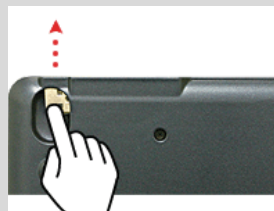
▶ Connecting External Drive

Connect the USB cable of the external drive to the USB port of the notebook PC.

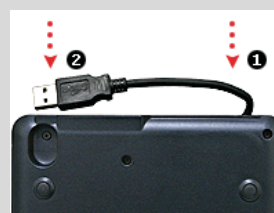


Tip

- The USB cable is on the bottom side of the external drive. Insert your finger as shown in the following figure and pull out the USB cable.



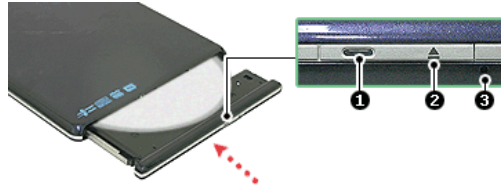
- If you want to insert the USB cable back to the external drive, first insert the cable and then insert the USB connector as shown in the following figure.



▶ Inserting/Ejecting CD

1. Boot the system and press the **Open Disk Tray** button in front of the external drive.
2. When the tray is ejected, place the CD at the center of the tray.

※ (With brand name facing upward.)



1. Operation lamp
2. Open Disk Tray button
3. Emergency Ejector

3. Push the tray in.

4. If you want to take out the CD, press the Open Disk Tray button and take out the CD when the tray is ejected.



Caution

■ LGPC-ODD works only in LG S210 Series.

Tip

- Use the external drive on a leveled place, if possible. On a tilted place, the CD-ROM, CD-RW, or DVD-ROM may not function normally.
- The external drive installed in the notebook PC is X24 speed. When a CD is inserted, the motor will rotate at a high speed resulting in slight vibration.
- When you hold an optical disk such as CD/DVD, be careful not to smear the surface.
- Do not use benzene or thinner to clean a CD.
- Do not write anything on the readable surface of a CD.
- Do not bent a CD.
- Be sure not to drop or smash a CD.
- Do not expose a CD to the sun.
- To clean a CD or DVD, rub with smooth cloth from the center to the outer edge.
- Do not remove the CD when the CD Operation lamp is on.

Chapter 6. System Setup



6-1. Starting System Setup

System setup means storing the hardware configuration information of the computer in the CMOS RAM. Through system setup, the computer retrieves various information including current date and time, memory capacity, and H/D capacity and type.

You setup the system when you set passwords, change the booting order, and add new peripheral devices to the machine.

※ Items displayed on the Setup screen may differ by model type and spec.

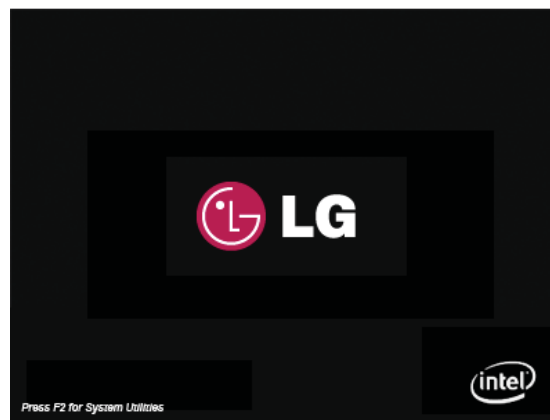
- Refer to [Setting the Password].
- Refer to [Changing or Deleting the Password].
- Refer to [Restore the Default Settings].



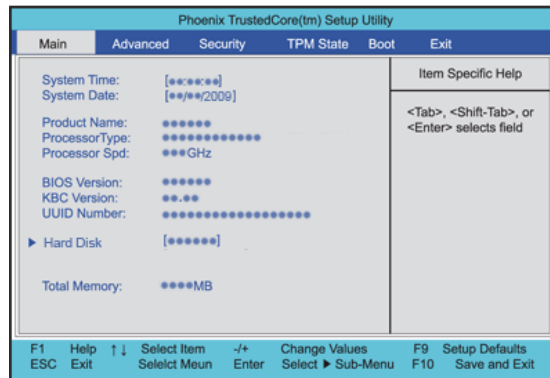
Caution

- A faulty system setup may cause an error during system operation. Therefore, be careful when changing the System Setup. Do not change the setup unless it is necessary.
- For performance improvement, the CMOS setup menu configuration and default settings may be changed and become different from the images in User Manual.

1. Turn on the notebook PC.
2. Press **F2** key while the "Press F2 for System Utilities" appears on the bottom of the LG logo screen.




3. A while later, the system setup home screen appears.



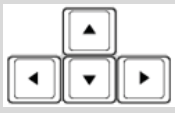
► Keys Used in System Setup

Keys	Descriptions
Enter	Selects the current item.
Esc	To deselect the current item or to move to the previous screen.
▲, ▼, ◀, ▶ (Arrow keys)	Moves the cursor up, down, left, and right.
+, -	Increases or decreases the item value.
Page Up	Moves the cursor up to the beginning.
Page Down	Moves the cursor down to the end.
F10	Stores new contents or ends the system setup.




Cursor Keypad

- These keys are used to move the cursors up, down, right, and left.



6-2. Setting the Password

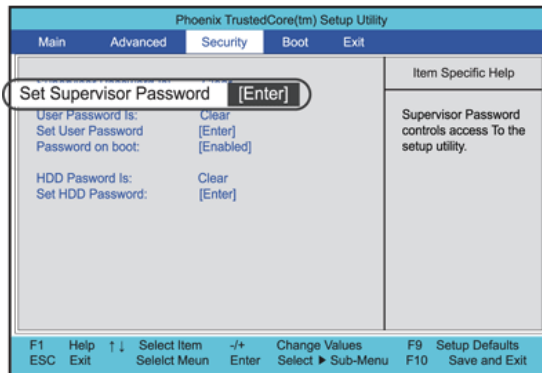
This process is to set a password so that other people cannot use the notebook PC or change the settings. The user can set a password while booting the system or setting up the system.

 **Caution** ■ Without the registered password, if any, access to the system will be denied. Write down and keep the password in a safe place.

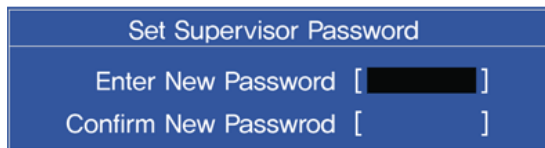
► Set Supervisor Password

The password prevents unauthorized people from accessing the notebook PC. By default, no password is set for the machine. In case an unauthorized person changes the CMOS setup while the notebook PC is on, a password will be set and the user will be denied from the access to the system.

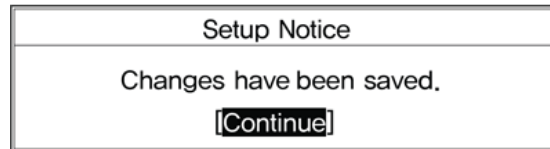
1. After opening the system setup screen, use the arrow keys to move to Security.
2. When the following screen appears, select Set Supervisor Password with the arrow keys and press [Enter].



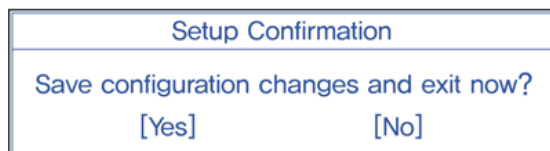
3. When the following message appears, input the password and press [Enter]. Password would be maximum 8 characters combined with characters (A~Z) and numbers (0~9).



- When the following message appears, press the [Enter] key.



- To save changes in System Setup, press the [F10] key.
- When the following message appears, select [Yes] and press the [Enter] key. The notebook PC will restart.



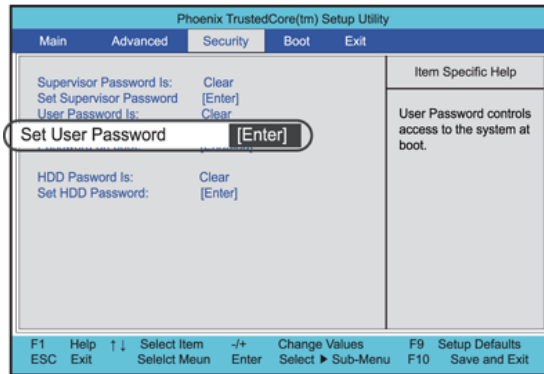
- With the Supervisor Password, the user will be authorized to set all items in the CMOS setup menu and to do the Power on Boot. In case other people also use the notebook PC, it is recommended to set the User Password.

► Set User Password

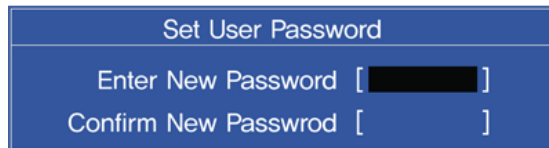
The Set User Password is lower in priority than the Set Supervisor Password, and so the user can use the Set User Password only after setting the Set Supervisor Password.

- After opening the system setup screen, use the arrow keys to move to Security.

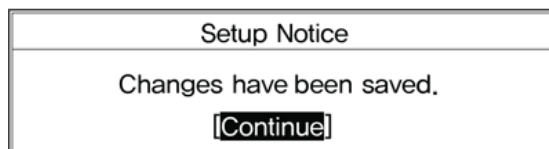
2. When the following screen appears, select Set User Password with the arrow keys and press [Enter].



3. When the following message appears, input the password and press [Enter]. Password would be maximum 8 characters combined with characters (A~Z) and numbers (0~9).



4. When the following message appears, press the [Enter] key.



5. To save changes in System Setup, press the [F10] key.

- When the following message appears, select [Yes] and press the [Enter] key. The notebook PC will restart.

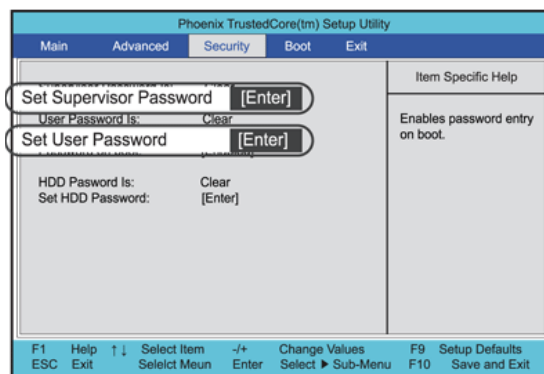


- The User Password allows limited access to the items in CMOS setup compared to the Supervisor Password Item.

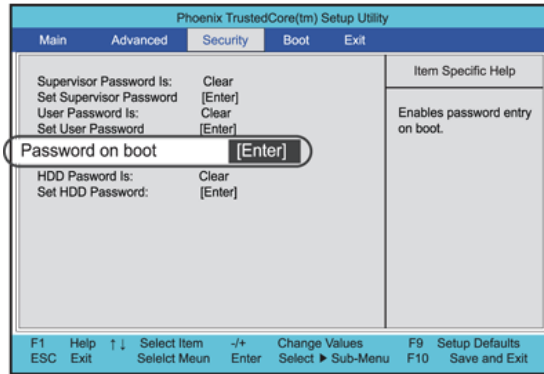
► Password on boot


Password on boot feature protects the system by requesting the Set Supervisor Password or Set User Password during boot up.

- After opening the system setup screen, use the arrow keys to move to Security.
- When the following screen appears, set the password for Set Supervisor Password only or both the Set Supervisor Password and the Set User Password.



3. Select Password on Boot, and change Disable into Enable using + and - keys.

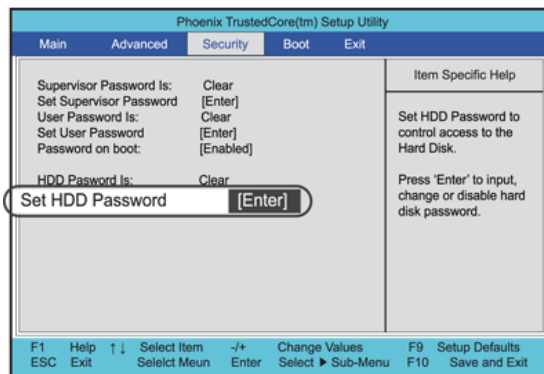


 ■ You may also press the [Shift] + [+] keys to toggle between [Enabled] and [Disabled].

► Set HDD Password

The HDD Password is to set a password in the HDD separately from the Supervisor Password.

1. After opening the system setup screen, use the arrow keys to move to Security.
2. When the following screen appears, select Set HDD Password with the arrow keys and press [Enter].



3. When the following message appears, input the password and press [Enter]. Password would be maximum 8 characters combined with characters (A~Z) and numbers (0~9).

Set HDD Password	
Enter New Password []
Confirm New Passwrod []

4. When the following message appears, press the [Enter] key.

Setup Notice
Changes have been saved. [Continue]

5. To save changes in System Setup, press the [F10] key.
6. When the following message appears, select [Yes] and press the [Enter] key. The notebook PC will restart.

Setup Confirmation
Save configuration changes and exit now?
[Yes] [No]



Caution

Without the HDD password, it is impossible to recover the HDD.

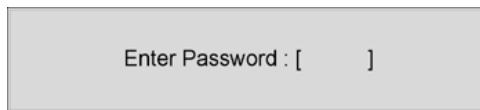
- The replacement of the HDD due to missing of the HDD Password is not covered by the warranty.

6-3. Changing or Deleting the Password

You can delete or change the password only after inputting the current password.

► Changing the Password

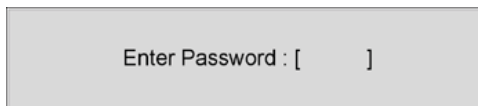
1. Execute the System Setup, enter the password, and press [Enter].



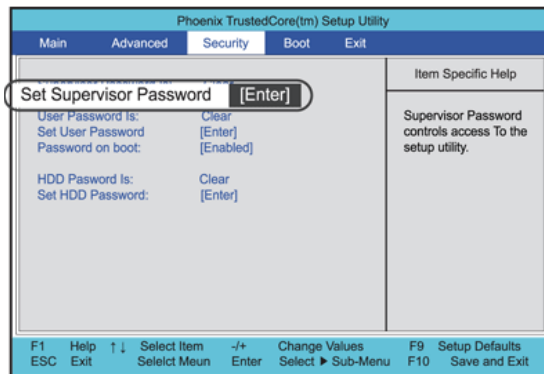
2. Change the password in the same way as setting one.

► Deleting the Password

1. Execute the System Setup, enter the password, and press [Enter].



2. After opening the system setup screen, use the arrow keys to move to Security.



3. When the following message appears, input the current password in the Enter Current Password field.

Set Supervisor Password	
Enter Current Password	[<input type="password"/>]
Enter New Password	[<input type="password"/>]
Confirm New Password	[<input type="password"/>]

4. Press the [Enter] key in the Enter New Password and the Confirm New Password.

Set Supervisor Password	
Enter Current Password	[<input type="password"/>]
Enter New Password	[<input type="password"/>]
Confirm New Password	[<input type="password"/>]

5. When the following message appears, select [Continue] and press the [Enter] key.

Setup Notice
Changes have been saved. [Continue]

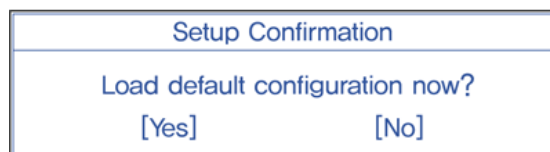
6. To save changes in System Setup, press the [F10] key.
7. When the following message appears, select [Yes] and press the [Enter] key. The notebook PC will restart.

Setup Confirmation
Save configuration changes and exit now? [Yes] [No]

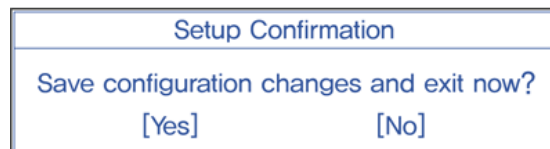
6-4. Restore the Default Settings

If you have changed the system setup by mistake, you can restore the default settings.

1. After opening the system setup screen, use the arrow keys to move to Exit.
2. Use the arrow keys to select Load Setup Defaults, and press [Enter].
3. When the following message appears, select [Yes] and press the [Enter] key. The settings will be reset to their original defaults.



4. To save the changes in system setup, press **F10**.
5. When the following message appears, select [Yes] and press the [Enter] key. The notebook PC will restart.



- You may also use [F9] to make Load Optimal Defaults available at once.

Chapter 7. Using LG Smart Recov-



ery

7-1. LG Smart Recovery System Backup

LG Smart Recovery helps you safely install and recover **Windows XP**.

※ The figures herein may differ by language selection and be subject to change without prior notice.

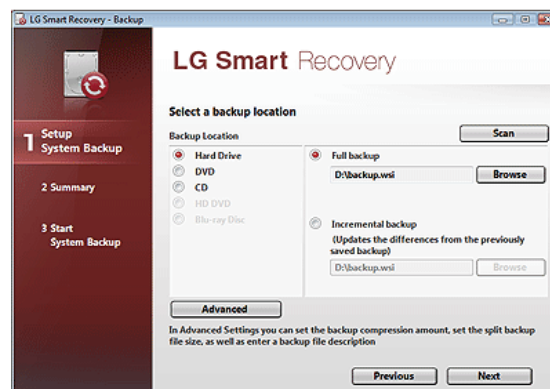
1. Double click the **LG Smart Recovery** icon on desktop to run the **LG Smart Recovery**.
2. Click the System Backup icon.



3. When the following screen appears, select the location to back up.

※ If you choose one among **DVD, CD, HD DVD, and Blu-ray Disc**, a Media Disc for the restoration purpose will be generated, and you can restore system only by rebooting it with the Media Disc.

※ The backup locations may vary depending on product specifications.



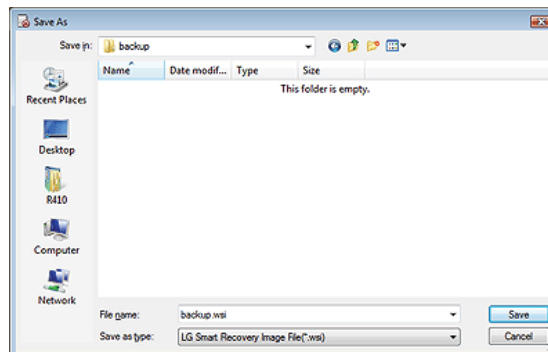
4. Choose Complete Backup or Partial Backup and click Browse button.

※ You can select Partial Backup only when you have previously run Complete Backup and the system has complete backup data.

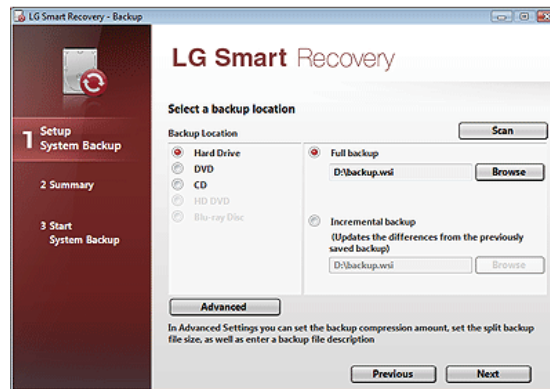


5. Specify the location to save the backup file, type file name and click Save button.

※ If you have selected Partial Backup, choose the existing complete backup data and click Open.

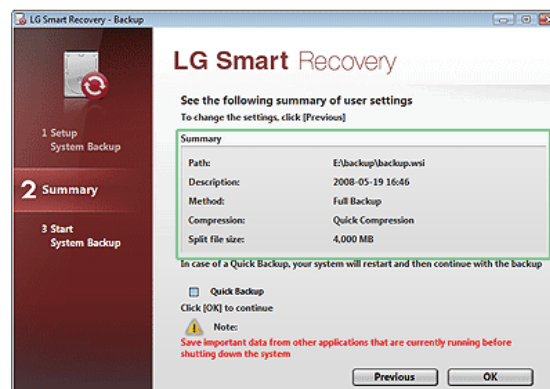


6. Once you complete the process to set the Complete Backup location, click Next.



7. Check the system backup preferences you have selected and click OK button.

※ Quick Backup reduces the time required to backup the system, and the backup is performed after rebooting the system.



8. After the system is rebooted automatically, the screen showing the progress of system backup appears.

※ Depending on product specifications and backup file size, the system may need longer time to load the file. Do not turn off the power

forcibly or reboots the system while it is loading the file.



9. Once the system backup process completes, click OK and the system will automatically restart in 10 seconds.



7-2. LG Smart Recovery System Restoration

You can restore the system by using the **LG Smart Recovery** backup data.

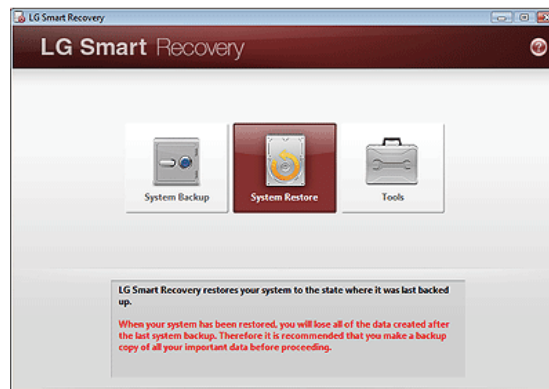
※ The figures and instructions herein are subject to change without prior notice.

1. Double click the **LG Smart Recovery** icon on desktop to run the **LG Smart Recovery**.

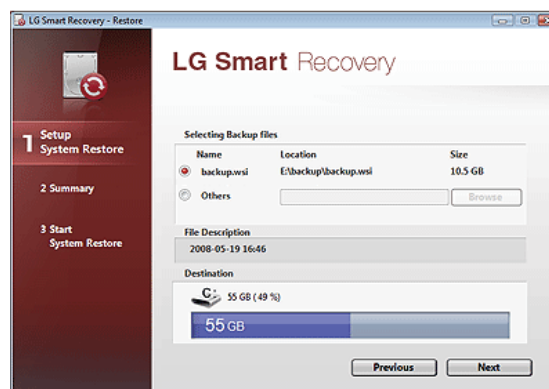
※ If **Windows XP** does not operate normally, restart the computer and when "PRESS F11 TO RUN LG RECOVERY.." message is displayed on the screen during the booting process, then press **F11** button to run **LG Smart Recovery**.

※ Backup important data by using Tools menu before starting the System Restoration process.

2. Click the System Restoration button.



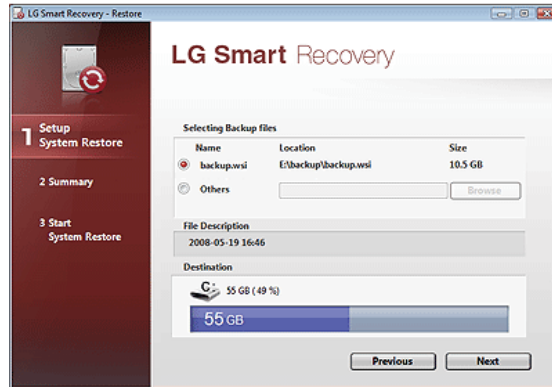
3. The System Restoration Settings screen will appear.



4. Click the Protected Hard Disk Area or Browse to select a file you want to back up and click Next.

※ The Protected Hard Disk Area option will be presented only if you have selected the Safe Backup when you run the **LG Smart Recovery** for the first time.

※ If you select the Protected Hard Disk Area, the system will be restored to the initial status when you have bought it.



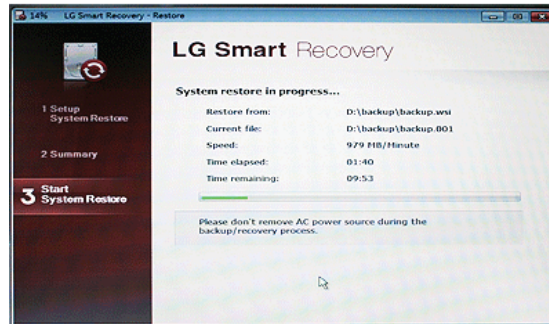
5. Confirm the restoration settings and click OK. The Restoration In Process message will appear.



6. Click Ok. The system will automatically restart in 1 minute and show the System Backup In Process screen.

※ Depending on product specifications and backup file size, the system may need longer time to load the file. Do not turn off the power

forcibly or reboots the system while it is loading the file.



7. Once the system restoration process completes, click OK and the system will automatically restart in 10 seconds.



7-3. LG Smart Recovery Tools Menu

LG Smart Recovery Tools menu provide useful tools to back up and restore the system efficiently.

※ The figures and instructions herein are subject to change without prior notice.



1. Disk Management: By using the Disk Management tool, you can perform disk-related tasks including creating partition and volume, formatting, and assigning drive letter.
2. Explorer: This tool shows drive disks and other hardware connected to the computer.
 - ※ By using the Explorer, you can back up user data before proceeding the system restoration.
3. Delete Disk: You can delete rewritable disks.

Chapter 8. Using LG Smart Recov-



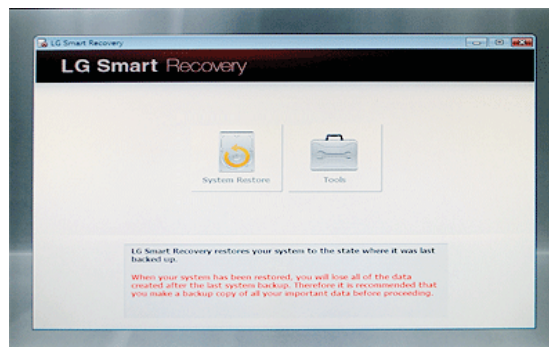
ery Center

8-1. LG Smart Recovery Center

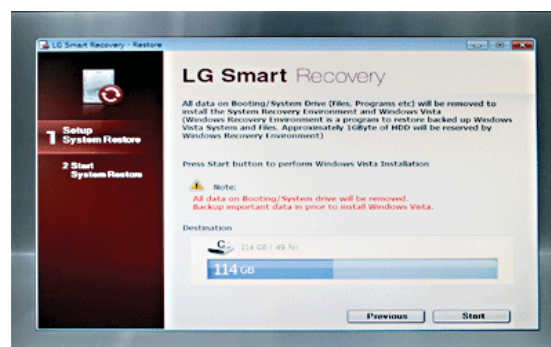
※ LG Smart Recovery Center DVD may not be supported in some models.

When LG Smart Recovery fails to restore the system, you can reinstall **Windows XP** by using the **LG Smart Recovery Center**.

1. Insert the **LG Smart Recovery Center DVD** into the **DVD-ROM** and restart the system.
 - ※ If the **LG Smart Recovery Center DVD** fails to boot the system, restart the computer and press **F2** to start the BIOS SETUP and change the Booting Order option.
2. When the booting completes, the System Restoration screen will appear.
3. Click the System Restoration button.
 - ※ Backup important data by using Tools menu before starting the System Restoration process.



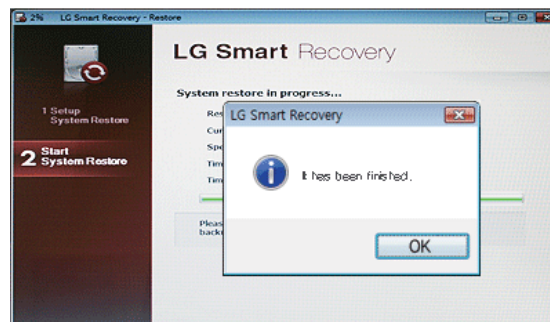
4. Click Start button.



5. When prompted to confirm to start the System Restoration, click OK.



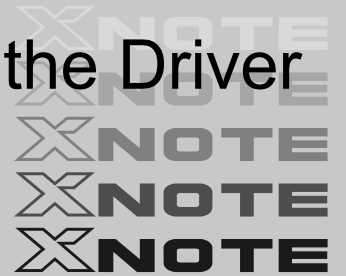
6. When it completes the restoration process, the system will present the Completed the Restoration message.



7. Click OK to restart the system automatically after 10 seconds.

※ Remove the **LG Smart Recovery Center DVD** from the **DVD-ROM** once the System Restoration process completes.

Chapter 9. Reinstalling the Driver



9-1. Reinstalling the Driver

- ※ The user can download drivers at www.lgepc.co.kr.
- ※ **Windows XP SP3** or higher version is recommended for driver installation.
- ※ The screen layout may differ by model type.

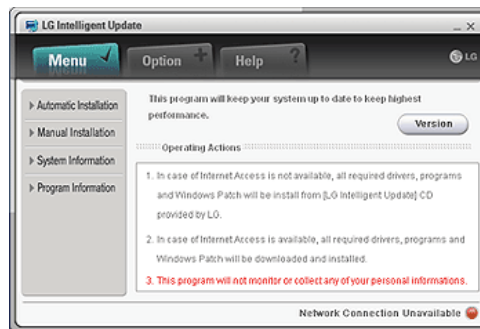
▶ Installation

1. Insert **LG Intelligent Update** CD in the optical disk drive.
2. When the installation screen appears, click **Next > Next > Next > Finish** buttons or press **Enter** to install.



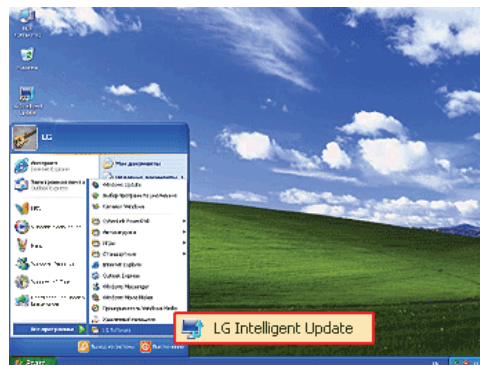
1. **Standard Installation:** Copy the files which will be needed only for execution to the hard disk.
2. **Full Installation:** Copy the entire CD to the hard disk. Drivers can be installed out of the copy without the CD.

3. **LG Intelligent Update** screen appears.



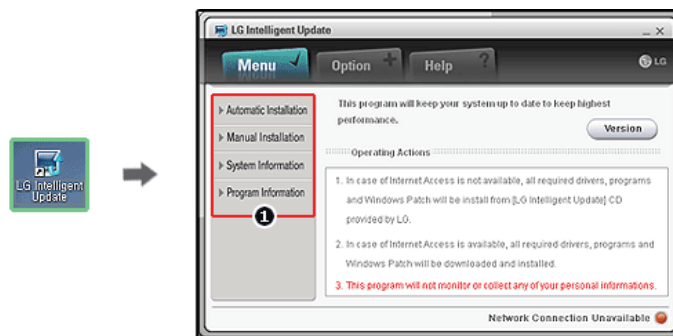
▶ Execution

1. Insert **LG Intelligent Update** CD in the optical disk drive. Then, the program will automatically start.
 - ※ If the **LG Intelligent Update** program is not installed, **LG Intelligent Update** installation screen will appear.
2. Select **Start > All Programs > LG Software > LG Intelligent Update** to continue.




3. Double-click **LG Intelligent Update** icon on desktop to run the program.

※ For more details, refer to Help.

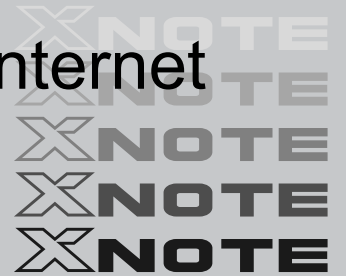


1. Now, you can install drivers and applications needed for the system.



■ The items that the user must install are automatically displayed on the Software Installation Wizard screen. Read the screen carefully before installation.

Chapter 10. Using the Internet



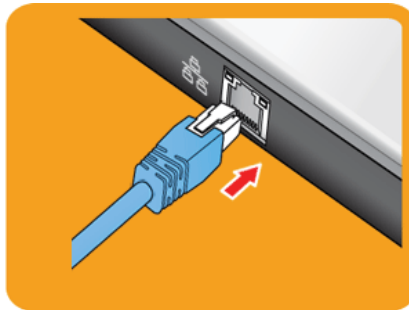
10-1. Using the Internet

There are various methods to access the Internet. Choose the most desirable method for user environments and system specifications.

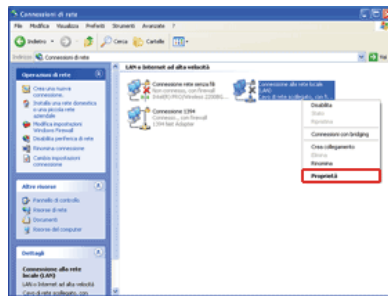
► Using LAN

LAN refers to high speed network environments linking companies and households.

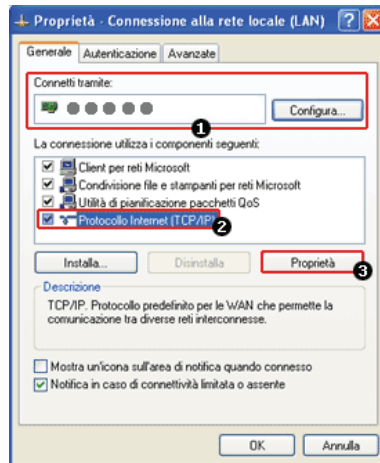
1. Connect LAN cable to the LAN port. On the taskbar, click **Start** | **Control Panel** | **Switch to Classic View** | **Network Connection**.



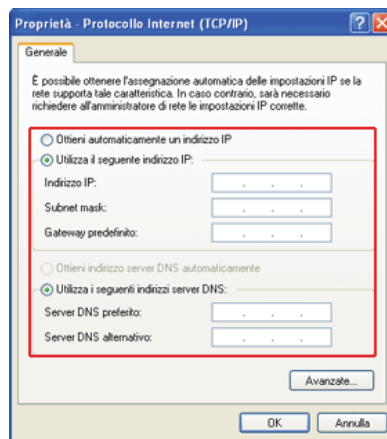
2. When the following screen appears, right-click Local Area Connection and click **Properties** in the list.



3. When the following screen appears, on **General** tab, check ① Device List for Connection to see if **Realtek RTL8102E/RTL8103E Family PCI-E Fast Ethernet NIC** driver was installed, and select ② Internet Protocol (TCP/IP), and then click ③ **Properties**.



4. On **Properties** | **General** tab, click Obtain an IP address automatically.



5. Click the **OK** button to complete the registration of Internet Protocol (**TCP/IP**) Properties.



- For IP address registration, contact the network administrator or local network service engineer.
- IP Operator provides a user-friendly environment to manage wired/wireless network setup. The provided **IP Operator** makes networking easy and convenient.

► Using Wireless LAN

※ **Optional** The **Wireless LAN** card is optional.

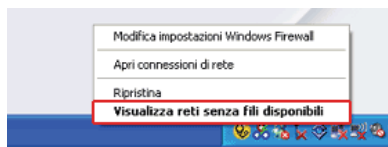
Wireless LAN supports multi-terminal networking at home and office.

Wireless network offers general network features (e.g. sharing files, folders, and a printer) and allows a computer without the Internet connection in a small network to access the Internet through another terminal.

※ By default, this computer is set for wireless network on the **Windows**.

► Connecting Wireless Network By Using the Icon

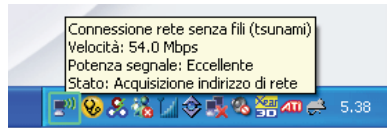
1. On the taskbar, right-click the connection icon and click **View available wireless networks**.





2. Select an **AP(Access point)** and click **Connect**.



3. To see the connection status, place the cursor over Wireless Network Connection icon on the taskbar.



	<ul style="list-style-type: none"> ■ If no network key is set for the selected AP, click "Allow me to connect to the selected wireless network, even though it is not secure." ■ Click Advanced button to check Connection Properties, if needed.
---	--

	<p>Caution</p> <ul style="list-style-type: none"> ■ Ensure the network is secured to share the computer and be careful not to share confidential data.
---	--

10-2. Using IP Operator







The **IP Operator** manages the setting of the wired/wireless network in the system and helps the user easily operate the system. IP Operator stores customized network settings to apply and analyzes the network to automatically set up **TCP/IP** for convenient use. The IP Operator also supports all types of **IEEE 802.11a, b, g** wireless networks, sets the optimal wireless network environment and automatically switches the network environments.

※ LG X120 Series supports **IEEE 802.11b/g** wireless networks.

※ For more information, refer to **IP Operator Help**.

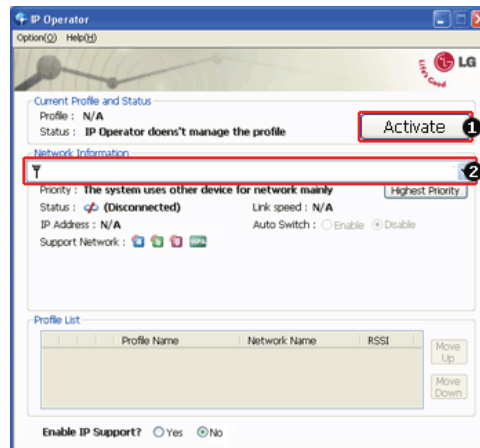
► Using IP Operator

IP Operator displays the following icons describing the network status.

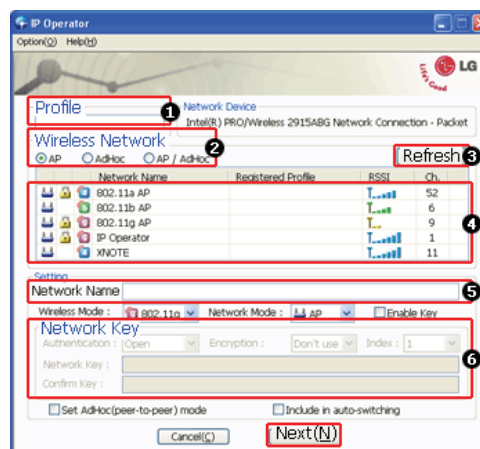
Icons	Descriptions
	IP Operator is starting. (Blue)
	IP Operator is not available. (Grey)
	The network cable is connected.
	The network cable is not connected.
	The wireless network is not connected.
	The signal strength of the current wireless network.

1. Right-click **IP Operator** icon on the taskbar and select Open **IP Operator**.

- When the following screen appears, click No. ① **Activate administration feature** button to make the wireless network available. When a different screen appears, select the right wireless network device from No. ② **Device Name** drop-down list.

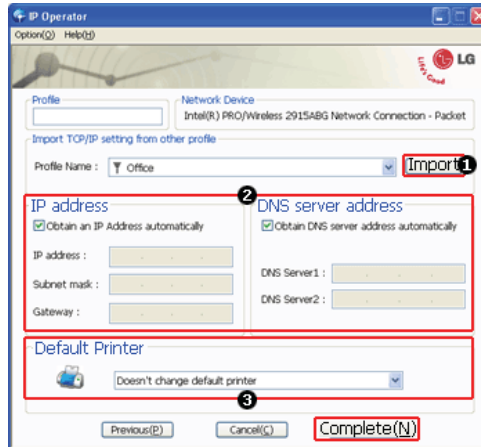


- Click **Add** button and click **Next** when the settings have completed as shown below.

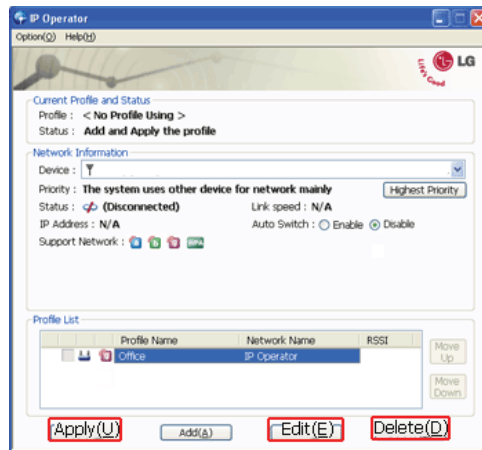


- Type the profile name.
- Select the wireless network type to search.
- Click to search the wireless network again.
- Select one of the searched wireless networks.
- Type the name of the wireless network.
- Type the wireless network key, if necessary.

4. Set **TCP/IP** address and the printer for the profile and click **Finish**.



1. To refer to the existing settings for **TCP/IP** and the printer, select the profile and click Get button.
2. Set IP and DNS addresses.
3. Select a default printer to apply the profile.
5. Select a profile to use. The user can edit or delete the selected profile, or can apply the selected profile to the system by clicking Apply button.

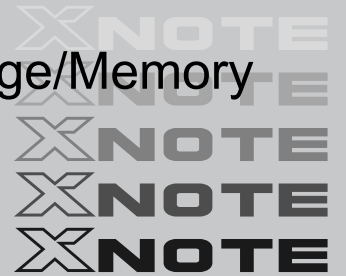




New features provided by IP Operator are as follows:

- 802.3 Automatic Switching: Analyzes the network when the network cable is connected and automatically searches the optimal profile for the system. (Must be set in the Option menu.)
- Automatic Wireless Network Switching: Searches the most suitable network for the use of a wireless network in various locations without manual settings.
- IP Supporting: Helps TCP/IP setup when another program, other than **IP Operator**, tries to set the wireless network, or when the selected wireless network already exists in the profile.
- Device Prioritizing: Prioritizes devices for more convenient use of multiple devices in the system.

Chapter 11. Auxiliary Storage/Memory



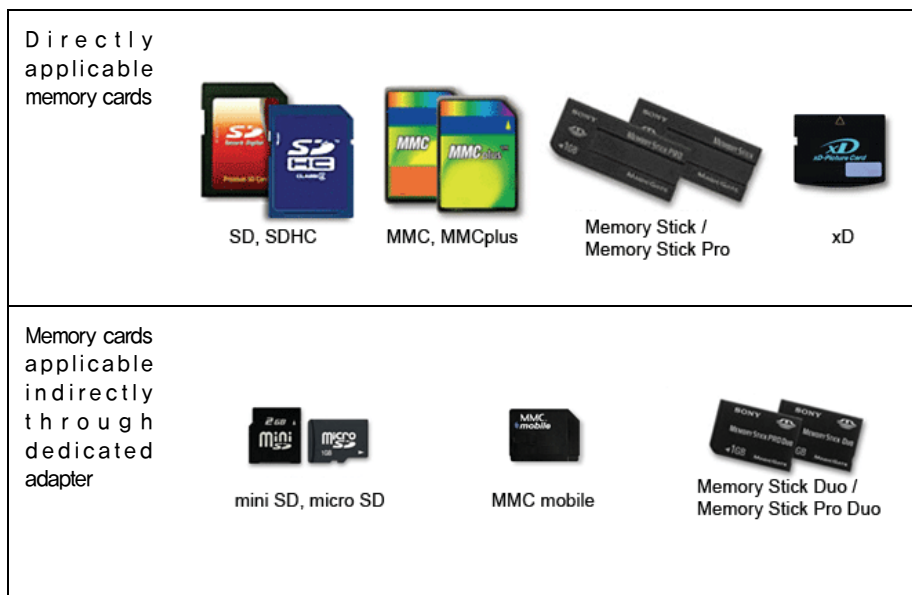
11-1. Using Memory Card

▶ Checking Available Memory Card

※ This model supports SD, MMC, Memory STick, and Memory Stick Pro.

SD, **MMC**, **Memory Stick** and **Memory Stick Pro** cards are mobile storage devices like a floppy disk, widely used in many digital products these days.

To use a **Memory Stick Duo** card, **Memory Stick Pro Duo** card, **mini SD** card, **micro SD** card, or an **MMC mobile** card, mount it on the dedicated adapter and insert the adapter into the multi-card slot.

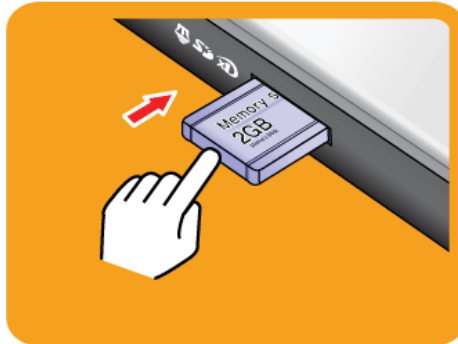


(The available memory type and capacity may differ by the computer model type.)

※ Check availability before buying a memory card.

► Mounting and Using Memory Card

Insert the card into the multi-card slot to the fullest in the right direction.




- When the memory card is formatted, the data stored in the memory card will be deleted. Check whether there are important data before formatting the memory stick.
- To format a **memory stick**, right-click **Memory Stick** drive and select Format. When Format window appears, click Start to continue.
- The format feature may not be available on those **Windows** whose version is lower than **Windows XP**. Format the card on other digital devices or format it after installing Memory Stick Formatter.
- If the writing prevention tab of **Memory Stick** is locked, the user cannot format the memory stick nor write or delete the data.
- **SD, MMC, Memory Stick and Memory Stick Pro** cards can be used only as storage devices, and don't support a copyright protection feature.

Caution

When using an MMC card:

- Place the MMC card with the arrow facing upward (▲), and insert it into the slot. Forcing the MMC card into the slot may cause an impairment.



■ Some memory products manufactured by **Transcend** are made of metal and may cause a short circuit when contacting with the connection port in the multi-card slot. Avoid using metallic-surfaced memory products. They could offset the system performance.


When using a memory card through dedicated adapter:

- Use the dedicated adapter. Otherwise a short-circuit may occur, causing damage to the computer and the memory card.

► Removing Memory Card

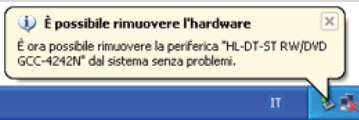
Push the card as depicted in the following picture to make the card spring out of the slot. Pull the card out in the direction of the arrow.





To safely removing a memory card:

6. Click **Safely Remove Hardware** icon on the taskbar.



7. Click **Safely Remove Hardware (S)**.
8. When **Safely Remove Hardware** window appears, click **Stop**.
9. When **Stop Hardware** window appears, click **OK**.

11-2. Expanding Memory Capacity


You may need to expand the notebook memory for better performance.

※ For memory expansion, we recommend that you receive a paid service from a service center certified by LG. LG disclaims any responsibility for damage resulting from uncertified service or arbitrary disassembly.

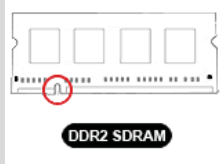
▶ About Memory

This system uses a 200-pin, **SO-DIMM**-type (**Small Outline Dual In-Line Memory Module**) **DDR2 SDRAM**.


LG X120 Series provides 1 memory slot, and the maximum capacity of the main board is **1GB**.



- When expanding the memory, add a memory with the same specification (**DDR2 SDRAM** for 1.8V). (Subject to change depending on model type)
- The **DDR2 Memory** provides greatly improved transmission rate than existing memories, and is differently shaped.



DDR2 SDRAM



Caution

To upgrade the machine, turn off the system and disconnect the power cord and the battery.

- Disconnect the telephone line linked to the modem, if any. An electric shock or fire may occur.

Supported Memory

- **PC2-6400S/DDR2 SDRAM SO-DIMM 800MHz**

※ When you expand your memory capacity, make sure to use the memory from the same company.

▶ Preparing Memory

Before purchasing memory, study the specifications and features of the current memory.

1. Rated Capacity: **PC2-6400S/DDR2 SDRAM SO-DIMM 800MHZ**
2. Speed: **800MHz (400MHz x 2)**
3. Type: **1,024MB**

▶ Adding Memory

※ Main board configuration, memory socket and memory type may differ by model.

1. Loosen the screw on the rear side of the notebook PC to remove the cover.



2. Insert the memory into the memory socket as shown in the figure.



3. Insert the memory until you hear a "click."



4. After inserting the memory, fasten the cover with the screws.



5. If an error message related to the main memory capacity is displayed during booting after the memory is expanded, press **F2** key and save the settings.



- Before remove the PC cover, turn off the AC power, and remove the battery and all peripherals. Then, disconnect the cable.
- Push till the memory is completely fixed in the lock.
- Check the memory capacity during the second booting. If the memory capacity is not correct, install the main memory again.

**Caution**

- Use only the expandable main memory module manufactured by LG. Using a main memory module other than recommended products may cause malfunctioning of the notebook PC.

Chapter 12.Appendix



12-1. Specifications

▶ Available Processors

Intel Atom Processor (L2 Cache Size: 512KB) is supported.

※ The user must not replace or expand the CPU capacity arbitrarily. The CPU capacity differs depends on model type.

▶ Main Memory

Main memory supports both 512 MB and 1024 MB, and provides 1 memory slot.

※ Memory types and specifications may differ depending on the model.

▶ Secondary Storage Devices

2.5" Hard Disk Drive (SATA)

※ The hard disk capacity and the type depend on the notebook PC model.

External Optical Disk Drive

※ **Optional** It may not be provided depending on the model. Its specifications also differ depending on the model.

▶ LCD

10.1" WSVGA LED (1024 x 576) TFT Color LCD

※ Some models are equipped with Glare Type LCD. This model is enhanced the sharpness compare to the other types of LCD. So, it may appears glaring a lot but this is the normal status.

※ The size and the resolution rate of the LCD depend on the notebook PC model.

※ When you use software (e.g. games) that does not support 1024 x 576 resolution, the screen may not work properly.

▶ Authentication for **Anticopy Technology**

U.S Patent Nos.4,631,603;4,577,216;4,819,908;4,907,093;5,315,448;and 6,516,132. Patent number of **Macrovision**.

This product includes the technologies that are possessed by **Macrovision** and corresponding companies and protected by the US Patent Law and other related laws. Use of all technologies subject to the copyrights must be approved by **Macrovision** in advance. Otherwise, the technologies may only be used for internal display. Do not disassemble or remodel the product.

▶ Bluetooth

Bluetooth 2.0+EDR

※ **Optional** Bluetooth is optional, and so it may not be installed in some models.

▶ Web Camera

1.3 Web Camera module

UVC (USB Video Class) driver supported

▶ External I/O Interface

External VGA Monitor Port: 1

Microphone: 2

Microphone Input Port (Mic in): 1


Headphone Port: 1

USB 2.0 Ports: 3

Multi-card Slot: 1

RJ 45 (LAN) Port: 1

USIM Card Slot: 1

※  USIM card slot may not be provided depending on the model.

▶ Video

Mobile Intel Graphic Media Accelerator 950 (Dynamic Video Memory Technology)

※ The DVMT actively utilizes part of the system memory when processing large graphic data like 3D graphics. Therefore, the size of the graphic memory is displayed as the sum of the actual graphic memory size and the utilized amount of memory, which is decided by the size of system memory.

※ Applications (graphics program, game, etc.) requiring strong graphic processing power may not work properly.

※ Specifications may differ by model type.

▶ Sound

Realtek High Definition Audio Codec (ALC269)

Built-in Stereo Speakers

▶ Modem

Ericsson F3507g (HSPA Modem)

※  The support availability may differ by model type.

▶ LAN

Realtek RTL8102E/RTL8103E Family PCI-E Fast Ethernet NIC (10/100mbps)

RJ 45 Jack

※ **Optional** The LAN specifications may differ depending on the model.

▶ **Wireless LAN**

Azurewave GE-703H (802.11bg, 1x2)

※ Wireless LAN specifications may differ by model type and cannot be arbitrarily changed by the user.

▶ **Weight**

Full Installation: About 1.14kg (including 3 cell battery) / 1.27kg (including 6 cell battery)

Battery: Less than 180g (3 cells) / 310g (6 cells)

※ Weight descriptions may differ by model type.

12-2. Power Supply and Environments

▶ AC Adapter (Free Voltage)

Power Capacity: 40W

- ※ Input: AC 100V ~ 240V, 1.7A, 50Hz ~ 60Hz
- ※ Output: 20V DC 2.0A
- ※ Caution: Use a rated and legitimate AC adapter, suitable for the model.

▶ Battery (Li-Ion)

Rated Capacity: 10.8V/11.1V

Battery Make-up: 3-cell or 6-cell battery (the battery make-up may differ depending on the model.)

- ※ Charging Hours: At room temperature (0°C ~ 40°C) and power turned off - Less than 3 hours (Time may differ by model type.)
- ※ Not charged under 0°C.
- ※ The above temperatures are internal temperatures of the battery pack, and may be different from the actual room temperature.

▶ Operation and Storage Environments

Operating Temperature: 10°C~35°C

Operating Humidity: 20% RH ~ 80% RH

Storage Temperature: -10°C~60°C

Storage Humidity: 10% RH ~ 80% RH

▶ Power Consumption

Operating Conditions	Approximately 20W	When running moving image media
Standby mode (Idle state)	Approximately 10W	In Display Off mode
Power Saving mode (Sleep Mode)	1.1W or lower	When entering S3(Suspend)
Off Mode (Standby(off) Mode)	0.8W or lower	When terminating the system

- ※ The above power consumption is calculated on the assumption that the battery is fully charged.
- ※ Power consumption during operation or standby may differ depending on the programs the system is running and product specifications.
- ※ Even when the system is turned off, it consumes a minute amount of power, if supplied. To cut off power supply completely, disconnect the power cord from the power outlet.