

## Finding a location with navigation

### What is the Traffic Message Channel

The Traffic Message Channel (TMC) is a specific application of the FM Radio Data System (RDS) used for broadcasting real-time traffic and weather information. Data messages are received silently, decoded, and delivered to a TMC enabled navigation system that can offer dynamic route guidance alerting the driver of a problem on the planned route and calculating an alternative route to avoid the incident.

### Connect your TMC antenna (Optional)

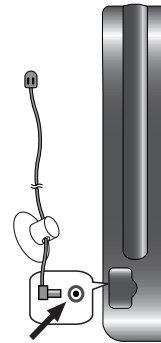
1. Open the cover from your Navigator.
2. Connect the antenna cable on the Navigator.
3. Use the suction cups to route the antenna horizontally or vertically on the windscreen. For best signal reception, route it vertically.



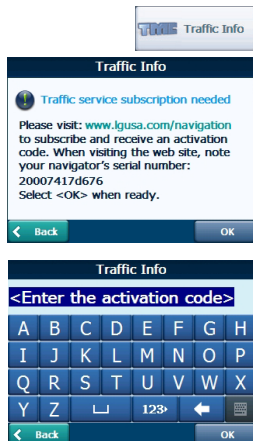
Drivers in California and Minnesota prohibit from placing anything on the [windshield](#) of a vehicle.

### Disclaimer

Developer is not responsible for any damage caused by an accident due to unreliable TMC radio transmissions by national, regional, or local broadcasters caused by TMC service restrictions, or by natural and man-made conditions that prevent real-time traffic and weather information from being delivered to the TMC-enabled navigation system. Developer is not responsible for the quality or accuracy of the events broadcasted and the method they are displayed.



## Finding a location with navigation

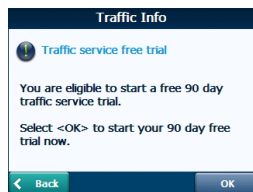


### Service Information

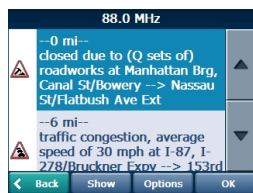
When you are in an FM TMC service area, your Navigator receives traffic signals as soon as you connect TMC module to your Navigator. You need to be in range of an FM station transmitting TMC (Traffic Message Channel) data to receive traffic information.

You do need to subscribe to traffic service.

1. Visit [www.lgusa.com/navigation](http://www.lgusa.com/navigation) to subscribe and receive an activation code.
2. When visiting the website, note your navigator's serial number.
3. Touch "OK" button when ready.



You can use a free 90 days traffic trial service. Select "OK" to start your 90 days free trial now



### Traffic Message Alerts

Traffic (TMC) messages are national and regional public radio FM transmissions that are used to inform drivers of traffic, weather, and other driving conditions, as shown below.

The traffic messages are displayed in the TMC Inbox screen, which can be opened by tapping on the TMC icon.

## Finding a location with navigation

1. From the Navigation menu, select the “Traffic Info” button, which opens the TMC inbox, and displays traffic reports.
2. You can select a traffic report and tap “OK” to show a map of the affected road. If you click the “Avoid” button, the Navigation recalculates your route.



- If the event was avoided, the Show Map screen displays the “Allow” button to recalculate to that previously avoided route section.
- All TMC messages are delivered to the TMC Inbox, but only messages relating the direct route and 200 meter radius are displayed. The radius is set to 160 kilometers when no route has been selected.

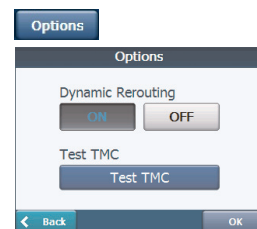
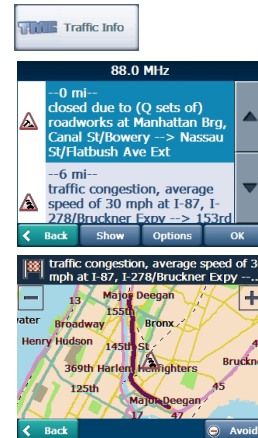
### Traffic Info Options

You can tap the “Options” button, the “Traffic Info options” dialog box is displayed, as shown below. These options have already been preconfigured for the best performance. It’s not advisable to change them. However, you can change the Traffic Info. Option configurations by selecting the following settings:

#### Dynamic Rerouting :

ON - The Navigation automatically recalculates the route to avoid a road with adverse traffic conditions – traffic jam or accident only.

OFF - You can manually select the TMC event from the inbox and tap the “Avoid” button from the Show Map screen.



## Finding a location with navigation

### **Test TMC :**

When you tap this button, The Navigation expands the search radius for to the "Whole Map" for one minute and switches automatically to the TMC Inbox screen and Displays one test message called "Testing TMC Service". After one minute, Navigator reverts to the route and the 200 meter radius."

If you do not receive any message after tapping this button, please check in the following order:

1. If you see the turner scanning but not locking on a TMC station, try to change your position and check that you have put your antenna vertically upright.
2. Depending on your location, you may not have TMC coverage.
3. Check that you are using the map of the country that you are currently traveling in.



Please make sure your navigation unit acquires the GPS signal before starting Traffic service free trial or subscription.

(Current position icon will turn green when GPS signal is acquired)

If you complete traffic service free trial without acquiring GPS signal, the unit may not display the accurate expiration date.

However, if the unit acquires GPS signal after completing traffic service free trial or subscription, the expiration date will be automatically adjusted and displayed correctly on the screen.

## Finding a location with navigation

### Route Manager

From the Navigation menu, tap the “Route Manager” button to display Navigator’s route navigation features, as described in the sections below.



### Turn-by-Turn List

After you have entered a destination and calculated a route, the Directions bar appears at the top of the Map screen, displaying the following information:

- The next turn direction
- The distance to the next turn
- The street name of the next turn

Tap the “Turn-by-Turn” button on the Route Manager menu. The Navigator displays a complete set of turn-by-turn directions from your current point to your selected destination. Use the Scroll buttons to move up or down the directions list.



The following options are available:

The “Route” button displays your entire route on the Map screen, plus the travel distance and the Estimated Travel Time Remaining (ETR).



The “Turn” button displays the next turn on the Map screen, including the street name, the distance to it, and the direction of the turn.

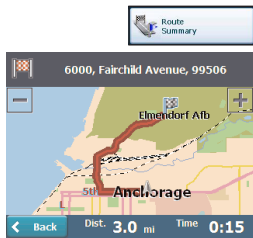


The “Avoid” button lets you avoid the selected turn in the directions list. The Navigator recalculates the route automatically.

Note that when you exclude a turn, the recalculated route may take longer.



## Finding a location with navigation



### Route Summary

The “Route Summary” button lets you display an overview of your complete route on the Map screen, the total driving distance to your destination, the estimated travel time, and the complete destination address.



### Detour

You can specify that certain roads be permanently excluded from your route calculations. Use this feature when you want to avoid congested roads, toll roads, or unsafe streets.

1. From the “Route Manager” menu, tap the “Detour” button.
2. The Detour screen appears, displaying the detour distance options to avoid a road event, such as an accident.
3. Select the Detour option that you want and tap the “OK” button to generate a detour for the distance specified.

For example, if you are traveling on Highway A4 and you are alerted by the news that there is a terrible traffic for the next 2 Km, you can have calculate a detour that takes you off the highway and then returns you back to the highway after a distance of 2 Km.



### Cancel Route

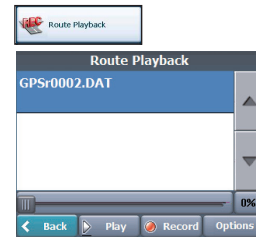
If you no longer need to travel to your destination or if you want to change your destination.

## Finding a location with navigation

### Route Playback

This feature lets you record your route as you're driving and then to play it back on the Main Map screen.

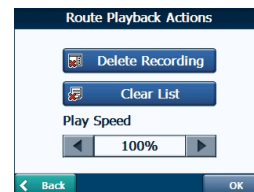
1. To record a route, tap the "Record" button in the Route Playback screen. The navigator shows the Main Map screen and navigates you to the selected destination.
2. To stop recording, return to the Route Playback screen and tap the "Stop" button.
3. To playback your recording, select the data file, and tap the "Play" button.  
The navigator plays the recorded route on the Main Map screen.
4. To stop the playback, return to the Route Playback screen and tap the "Stop" button.



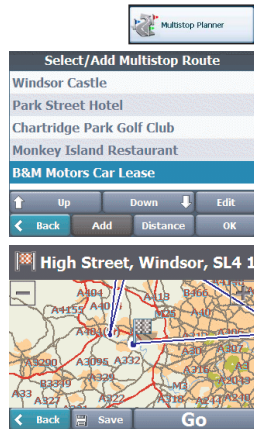
### Route Playback Options

You can tap the "Options" button to display the following commands:

- Delete Recording  
This button lets you remove a selected recording.
- Clear List  
This button removes all recordings.
- Playback Speed  
Use the arrow keys to adjust the playback speed. The range is from 100% to 300%.



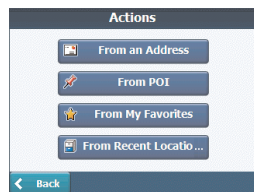
## Finding a location with navigation



### Multistop planner

Edit Way Points lets you plan a route with up to 5 stops.

When you tap the “Go” button, the route is calculated in stages, from the departure point to the first stop. When you reach the first stop, the route recalculates to the second stop, and so on.



### Setting Stops Along the Route

1. From the “Select/Add Multistop Route” screen, tap the “Add” button to add a stop by Address, POI, My Favorites, or Recent Locations.
2. Select one of these options, specify a location, and tap the “OK” button.
3. The “Select/Add Multistop Route” screen appears with the selected location.



Use the “Up” or “Down” buttons to change the order of your itinerary.



Use the “Edit” button to show or delete a highlighted entry.



Use the “Distance” button to organize your entries from closest to farthest distance from your current location.



## Finding a location with navigation

### Route Options

You can use Route options to determine what road categories to avoid or allow and to set the default route type when Navigator calculates your selected destination.

#### Avoid Roads

Toll, Highway, and Ferry route sections are avoided or allowed as determined by whether they are selected, when Navigator calculates a route. You cannot allow or avoid specific toll roads or ferry routes.

#### Route Condition

**Fastest:**

This option selects the route that takes the least amount of time.

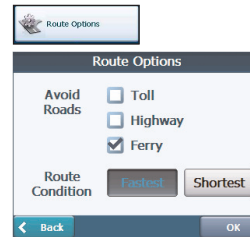
Fastest is the default value.

**Shortest:**

This option selects the route that is the shorter distance. Remember, the shorter route may not always be the quickest, as you are able to travel faster on some roads than on others.



Route generation excludes any detours, stops or delays along the route.



## Setup



### Display

Tap the “Display” button to determine how Navigator’s map view is displayed, as shown below.

#### Dimension

The 2D and 3D Mode buttons lets you display the map view in 2-dimensional or 3-dimensional views for either day or night driving.

#### Day&Night

The Day and Night Mode buttons lets you display the map view for either day or night driving.

The Auto button automatically adjusts the map view for day or night driving.

The optimum level in accordance with the ambient light based on the light sensor.

#### Map Display

The Pedestrian Mode button lets you toggle between traveling as a pedestrian or in a vehicle.

When in Pedestrian Mode, you can generate a route up to ten kilometers and you are not limited by vehicle constraints, such as one way streets.

When creating a pedestrian route, the Navigator avoids motorways or other roads where pedestrians would not travel.

Voice prompts are deactivated in this mode.

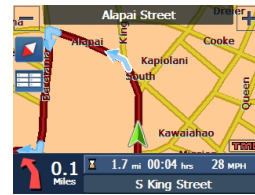
#### Brightness

You can use the Brightness slide bar to adjust the backlight level.

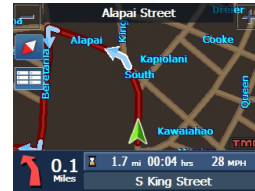
## Map Views

The map views below let you see the differences between 2d/3d day/night conditions.

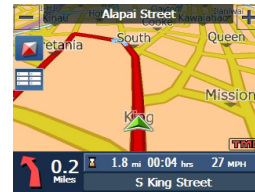
### 2D Day Mode Map View



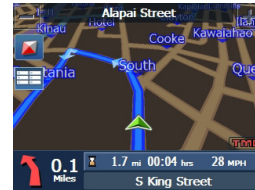
### 2D Night Mode Map View



### 3D Day Mode Map View



### 3D Night Mode Map View



# Setup



## Units & Time

You can tap the “Units & Time” button to specify units of measure system and adjust the time as displayed on your Navigator.

### Distance Unit

Miles : Display and announce in miles

Kilometers : Display and announce in kilometers.

### Adjust Hour

You will see the current values of GMT, and use one time zone, Greenwich Mean TIME (GMT).



## Language

Lets you select the language for text and voice travel messages and driving directions.



## Guidance

You can select the types of voice and visual notifications that you would like to use while navigating.

### Speed Warning

Warns you when your car exceeds the speed limit. This prompt is not active by default.

### Route Recalculation

Activated when the Navigator recalculates a new route.

This prompt is not active by default.

**Unreliable GPS Signal**

Warns that the GPS signal is too low and unreliable for navigation.

This prompt is automatically active by default.

**Traveling to...**

Reminder at the start of each journey.

This prompt is automatically active by default.

**Say Rd**

You can set the type of the guidance name that you will use to navigate the route.

**GPS Status**

The Navigator uses the GPS receiver to pinpoint your location. GPS signals are automatically acquired and your vehicle's location and position are constantly updated.

The GPS receiver may take a few minutes to find its initial location.

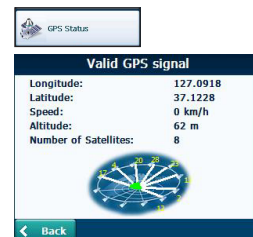
For best results, ensure that the GPS receiver has a clear view of the sky.

The following GPS information is displayed:

- **Longitude:** The angular distance east or west on the earth's surface.
- **Latitude:** The location of a place north or south of the earth's surface.
- **Speed:** The rate of movement, as expressed by kilometers or miles per hour.
- **Altitude:** The height above sea level.
- **Number of Satellites:** You can check reception signals from the GPS satellite.



If GPS signal can not be acquired for long, please restart whole navigation system by pressing Reset.



# Setup

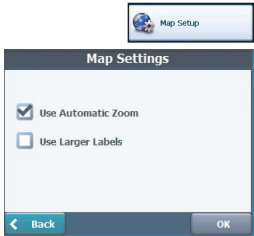
## GPS Not Found

When you first start the Navigator you will hear the message “Signal too low”. This message means that your navigation device hasn’t yet located a reliable GPS signal. Check that your device is connected to the cigarette lighter and has a clear view of the sky.

The “GPS not found” message means that there is not GPS antenna or the antenna is not properly installed.

Please check that:

- The GPS antenna has a clear view of the sky for uninterrupted GPS reception. The Navigator cannot calculate the route if there is no GPS reception (for example, in a tunnel).
- The navigation device is charged or connected to the cigarette lighter.



## Map Setup

You can tap the “Map Setup” button to customize your map display.

### Use Automatic Zoom

When this option is selected, the zoom is speed dependent. The map zooms out at higher speeds, displaying a larger map area, and zooms in at slower speeds, displaying a smaller map area.

If you manually change the zoom, the Automatic Zoom returns to a system defined zoom level after several seconds of inactivity.

### Use Larger Labels

This option increases the size of street names to make the map easier to read.

## Setup

From the Setup menu, tap the “More” button, to display the Navigator add-ons as described in the section below.

### Tutorial

When you first start the Navigator, a message box appears prompting you to open the Navigator Guided Tour program.

The Guided Tour is an excellent way of becoming familiar with the different navigation features available. You can also start the Navigator Guided Tour any time, by tapping the “Tutorial” button from the “Extras” menu.

### Help

The “Help” button lets you display Navigator technical support information.

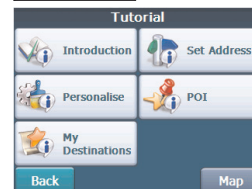
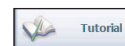
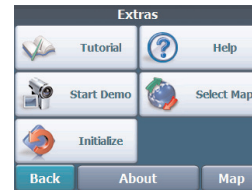
### Start Demo

The “Start Demo” button lets the Navigator display a simulated route. Many of the navigation features are disabled when the Demo is running.

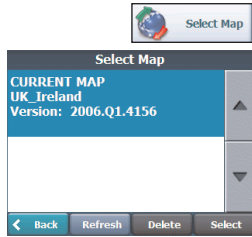
You can end the Demo by tapping the “Stop Demo” button.



The demo route is seted, and depending on the current map data, the demo function may differ somewhat from the map data.



# Setup



## Select Map

This feature lets you change the currently selected map to another map saved on your SD memory card. If you want to store additional maps on your memory card.

You can tap the “Select Map” button to display the maps saved on your built-in memory.

The Select Map screen displays map details and version numbers. The map currently used appears at the top of the list.



Lets you refresh the screen when a new memory card is inserted into the device.



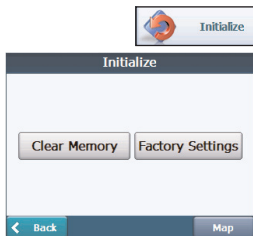
Lets you permanently remove a selected map.



You cannot delete the current map.



Select Lets you designate a selected map as the current map.



## Initialize

**Clear Memory:**

You can delete all listing from the memory.

**Factory Settings:**

You can set all the function to their factory settings.



### Installing the Navigator “PC Portal”

It should be install the Microsoft .Net Framework 2.0 for the operating system from the install screen.

1. Insert the Navigator CD into the PC's CD-ROM drive. The “PC Portal” Installation wizard prompts you to select the language used for the installation process. When you have selected a language, click “OK”.
2. Read the Welcome message and click “Next”.
3. From the Select Directory screen, either accept the recommended default directory or browse to a different directory to install the “PC Portal”. Click “Next”.
4. If you want to change the language selection or the directory location before installing, click “Back” and change the language selection. When you are ready to install the “PC Portal”, click “Next”. The Installation Status box displays the progress of the installation process.
5. When the installation is complete, click the “Finish” button.
6. After finish installing PC Portal, install the “Maps installer’ program. This procedures are similar to PC Portal install.
7. When the installation is complete, click the “Finish”button, The Select Language box appears.



## Installation

8. From the Select Language dialog box, you can select the display language for the “PC Portal”. Select the Launch “PC Portal” checkbox for “PC Portal” to immediately start and click “OK”. Alternatively, you can start the “PC Portal” from the Microsoft® Windows® Programs menu.
9. Select from up to two connected devices.  
(LN735/LN740)

### Recommended PC System Requirements

Please review the following system requirements before installing “PC Portal”:



- CPU: AMD/Intel® Processor 300 MHz or faster
- Operating System: Windows® 2000/XP/Vista
- Memory: 128 MB RAM (minimum)
- Hard drive free space: 500 MB (minimum)
- CD-ROM: 4x drive or higher
- ActiveSync Version 3.8 to 4.2 supported under Windows 2000 and XP
- USB Version 1.1 or 2.0 connection
- Microsoft .Net Framework 2.0



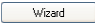


### Starting the “PC Portal” Wizard

The first time you start the “PC Portal”, the “PC Portal” Wizard automatically starts, letting you install Navigator software, supported languages and voice prompts, and maps.

For a complete description of the “PC Portal”, see Using the “PC Portal” on page 64.

1. Click the Microsoft® Windows® Start button.
2. Click the Programs > LGE > “PC Portal”.  
The “PC Portal” appears.
3. If this is your first time using “PC Portal”, the “PC Portal” wizard automatically starts and displays the Welcome screen.
4. Make sure that your device is connected by USB cable to a port on your PC. You will see Connected on the “PC Portal” screen.
5. Click the   buttons to move to the previous or next screen.
6. Select software components to install to your device.



- If you want to start the wizard, click  from the “PC Portal” Main screen.
- If you want to stop the wizard, click  .  
The “PC Portal” Main screen is displayed.
- If after selecting component, software, and voice options, you want to return to the original selections, click  .

## Using software



### Using the “PC Portal”



Click “Install Software” and select from the following components to install to your device:

- LGE: GPS navigation software
- Tutorial: Tutorial guide

To install Navigator components:

1. From the Install Software screen, select from the list of components, as described above.
2. Click the Install button.
3. Navigator “PC Portal” installs the selected components to the device’s main memory.



Click “Manage Maps” to install or remove a map. For more information, see “Installing Maps” on page 67.

## Using software

Click the “Backup/Restore” button to backup the following Navigator items:

- Favorites: All locations that are displayed in Navigator’s Favorites screens.
- Trips: All locations that appear in Navigator’s Multistops screens.
- LGE Settings: Setting configurations, such as map views (2D/3D and Day/Night), prompts, units of measurement, and map and route setting preferences.

When you select Backup, “PC Portal” makes a copy and stores the information to your computer.

To backup Navigator data to your PC:

1. From the Backup/Restore screen, select Backup.
2. Select the items that you want to make a copy of and save to your computer.
3. Click the “Backup” button.
4. “PC Portal” saves the selected items to your computer.

Click the Backup/Restore button to restore Favorites, Multistops, and My Navigator data to a navigation device. When you select Restore, “PC Portal” recovers the information stored on your computer.

To restore stored Navigator data to a navigation device:

1. From the Backup/Restore screen, select Restore.
2. Select the items that you want to restore.
3. Click the “Restore” button.
4. “PC Portal” restores the selected items.



## Using software



Click to import favorite locations from your PC to the selected My Favorites group on your device. For more information, see “Importing Favorite Locations” on page 68.



Click the “Select Language” button to show a list of languages that you can choose from to display the “PC Portal”.



Click the “Select Device” button to select from up to two connected devices. The Select Device screen lets you quickly install, import or export, backup or restore Navigator components and data for multiple devices.



Click the “About” button to check software version.



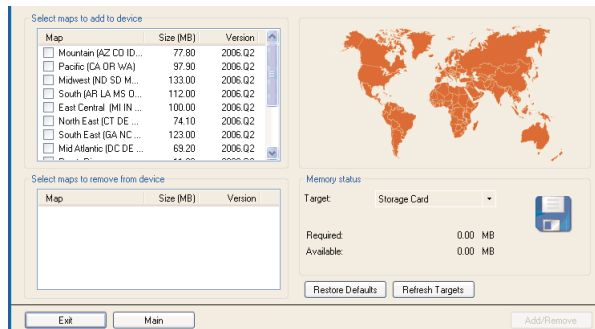
Click the “User Manual” button to see a user manual.



Click Install Languages to install a language to your device.

To install languages:

1. From the Install Languages screen, select the languages to be installed to the device.
2. Click the Install button.
3. Navigator PC Portal installs the selected languages to the device’s main memory.
4. You can display the Navigator interface in the language of your choice by opening tapping the Language Settings button on the Setup menu and selecting the language in Navigator.



### Installing Maps

1. From the Desktop Maps pane, select a map.
2. From the “Target” context box, select a target option, such as Storage Card or Main Memory.
3. When you select a Target option (Storage Card, Main Memory) the “PC Portal” displays the following information:
  - Required: The amount of free space necessary to install the map on the selected Target option.
  - Available: The amount of free space available for the selected Target option.

Note: If the free space required is equal or greater than the free space available, “PC Portal” will not install the selected map.
4. Click the “Add/Remove” button.
5. The selected map is installed and displayed in the Device Maps pane.
  - Click the “Refresh Targets” button to update the target options.
  - Click the “Restore Default” button to display the original options.

## Using software

### Removing Maps

You can remove a map by selecting a map in the Device Maps pane and clicking the “Add/Remove” button.



Before removing maps, you must set in Media Player (Music, Photo) mode. And then, you can remove a map.

### Importing Favorite Locations

Import Favorites lets you import content created externally as a new Favorites category.

You can download a category of favorite destinations from your PC to your device. Destination data must be contained in a comma-separated values (.csv) file. You can import favorites to your device by following the procedure as displayed on the Import Favorites screen.

This feature lets you import your favorite destinations into LGE.

1. Please select the file in CSV format:
2. Change the group name (optional):
3. Click OK to import the selected destinations to LGE. A new group will be added to My Favorites.



## Using software

The .csv file contains the following fields:

Fav. Name	Notes	Longitude	Latitude	Altitude	City	Street	Address
Fav.place 1	Comm. 1	39.21370	38.78903	8033	Munich	Adaloweg	173

- The longitude, latitude, and altitude are numerical values. All other fields contain string values.
- Even if the .csv file does not contain longitude, latitude, and altitude values, the separating commas must still be included.
- The .csv file contains the values in a table as a series of ASCII text lines, organized so that each column value is separated by a comma from the next column's value and each row starts a new line.



## Using software

### General Warning Messages

The following warning messages can appear when you're working with Navigator "PC Portal".

#### Lost connection transfer

If at any point during the installation or data transfer, the connection to the device is lost, the following message is displayed:

"Connection to the device has been lost. Please check your connection."

#### Uninstalling Navigator Console

When a version of Navigator programme (versions prior to the "PC Portal") is located on your computer, the following message is displayed:

"A previous version of "PC Portal" was found. Do you wish to uninstall?"

It is recommended to uninstall the previous programme before installing "PC Portal".

#### Uninstalling "PC Portal"

When an earlier version of Navigator "PC Portal" is located on your computer, the following message is displayed:

"A previous version of "PC Portal" was found. Do you wish to uninstall? "

It is recommended to uninstall a previous version of "PC Portal" before installing the current version.

#### Updates to "PC Portal"

If there are updates in Navigator, you are prompted to download them in the following message:

"There are updates to "PC Portal", do you wish to download and install them?"

## Using software



If maps from a previous version is located on your computer, the following message is displayed:  
"Existing maps data found. Do you want to keep it?"  
Clicking "Yes" lets you install maps from previous versions.

### **Previous maps**

The following message appears when you have selected an installed map and clicked the Actions button:  
"Selected maps shall be removed from your device. Are you sure you wish to continue?"

### **Remove maps**

If you close the PC Portal while install Navigator software, a map, importing or exporting a Favorite location, or backing up data. the following message appears. : "if you will close the PC Portal now, the [process] shall not be completed. Are you sure you wish to close?".

### **Data Transfer**

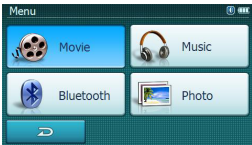
If stored data is located on your computer, the following message appears:  
"Navigator Backup data found. Do you want to keep it?" It is recommended to keep backup data.

### **Backup Data**

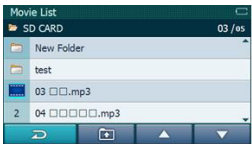
# Movie Player

## Getting Started/ Playing movie

Make sure that the SD memory card saved playable movie file is inserted on your device.



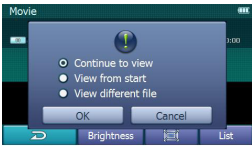
- 1. Press "MENU" button.  
The menu is displayed.



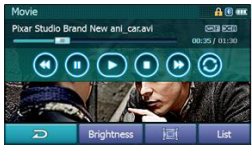
- 2. Tap the "Movie" button.  
The movie list appears.



- Playable movie file : ".wmv", ".avi", ".mpg"
- If there is previously playing movie, the popup menu is displayed. Select a item you want and then tap "OK". If you don't need to select a item, tap "Cancel".



- 3. Tap a movie file you want to play.  
Playback starts.



## Playing feature

### Pause/Play/Stop



The **||** button lets you pause the movie.  
To play again, touch the **▶** button.



The **■** button lets you stop the movie and move to the menu screen.

## Movie Player

### Skip the next movie

Tap briefly the ►► button to select the next movie during playback or stop.



### Skip the previous movie

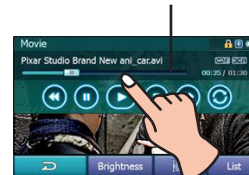
Tap briefly the ◄◄ button to select the previous movie during playback or stop.

### Search

Tap and hold the ◄◄ or ►► button during playback or stop and then release at the point you want.

You can tap progress bar to search the track.

### Progress bar



### Repeat

This function lets you set the repeat playback mode.

- 1 : Plays repeatedly the current selected movie.
- F : Plays repeatedly all movies within folder.
- Off (No display) : Plays repeatedly all movies within SD memory card.



### Return

You can tap the "Return" button to close the Movie Player and return to the menu screen.



### List

The "List" button lets you return to the movie list screen.



### Brightness

The "Brightness" button lets you adjust the brightness of LCD.



# Movie Player



**Full screen/ Basic screen**  
This function lets you view the full screen or basic screen.



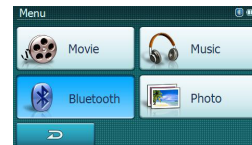
**Subtitle**  
This function lets you adjust the settings about subtitle.

- **On** : Shows the subtitle.
- **Off** : Does not show the subtitle.
- : Delays the subtitle by the 0.5 second.
- : Increase the subtitle by the 0.5 second.

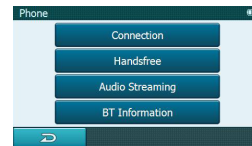
# Bluetooth

## Getting Started

1. Press "MENU" button.  
The menu is displayed.



2. Tap the "Bluetooth" button. Or Press the B/T button.  
The bluetooth mode appears.



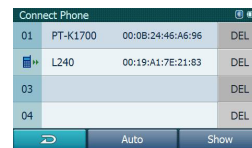
## Connection

Tap the "Connection" button to enter the connection mode.  
The information of connected phone appears.



## Manual mode

When "Auto" is displayed, the current status is the manual mode.  
Try the connection with your device to connect a bluetooth phone.



## Auto mode

When "Manual" is displayed, the current status is the auto mode.  
bluetooth phone that it has lastly connected will automatically start the connection process.

## Hide mode

When "Show" is displayed, the current status is the Hide mode.  
any other bluetooth phone cannot search the unit.

## Show mode

When "Hide" is displayed, the current status is the Show mode.  
any other bluetooth phone can search the unit.

# Bluetooth

## Handsfree

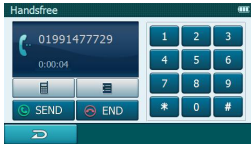
1. Tap the “Handsfree” button to enter the handsfree mode.

The handsfree screen appears.

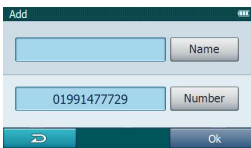


2. Tap the number button to call up.

3. Tap the “SEND” button to speak by telephone.



Stores the phone number.



Adds to the phone number.



Moves to the Phone Book screen.



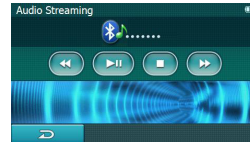
Deletes to the phone number.



## Bluetooth

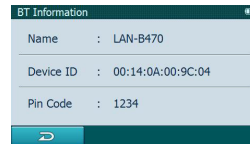
### Audio Streaming

You can control and hear the saved MP3 file on the Bluetooth phone via the unit.



### BT Information

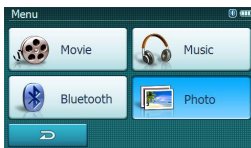
Shows the information of model name, Device ID and Pin Code about the Bluetooth.



# Photo Viewer

## Getting Started

1. Press "MENU" button.  
The menu is displayed.
2. You can open the Photo Viewer by clicking the "Photo" button.

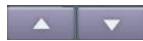
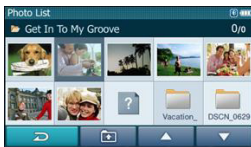


The Photo Viewer lets you view pictures from your unit. This application recognizes JPG and BMP files.

## Browse to an Image

When you open the Photo Viewer, the Photo list screen is displayed, showing the top level folders on your device.

Click the folder icon to display its sub-folders and JPG and BMP image files.



You can tap the "Page Up" and "Page Down" arrow buttons to display the sub-folders and image files in the current folder.



You can tap the "Directory Up" button to display the folder immediately above in the folder hierarchy.



You can tap the "Return" button to close the Photo Viewer and return to the Source menu.

## Photo Viewer

### Viewing Image

Tap an image file icon in the Photo list screen to view. The image appears in the View Image screen, as shown below.

The following buttons are provided to let you display images from the View Image screen:

The ◀◀ or ▶▶ button lets you display the previous or next image in the sequence of image files located in the selected folder.

The || button lets you pause the slide show. To play again, touch the ▶ button.

The ▶ button lets you view all JPG and BMP images in the current folder in Slide Show mode. Photo Viewer shows all pictures in full-screen mode automatically at a certain rate.

The “Rotate” button lets you move the image clockwise. Each tap rotates the image 90 degrees.

The “Repeat” button lets you set the repeat playback mode.

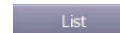
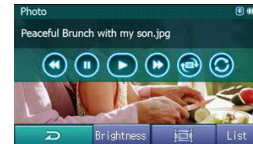
🔄 : Plays repeatedly in within folder.

The “Return” button lets you return to the previous screen.

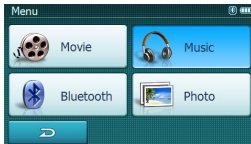
The “Brightness” button lets you set the LCD brightness. (Dark : 0~100 : Light)

The “List” button lets you return to the Photo list screen.

The “Size” button lets you enlarge the small size of image file.



## Music Player



### Getting Started

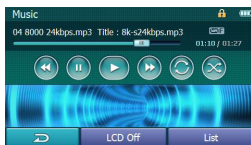
1. Press "MENU" button.  
The menu is displayed.
2. You can open the Music Player by clicking the "Music" button.



- Sampling Frequency: 8 - 48kHz (MP3)
- Bit rate: within 8 - 320 kbps (MP3) (include VBR)

### Playing Music

Tap a music file in the Music list screen to listen.



The ◀◀ or ▶▶ button lets you select the skip or search in the music files located in the selected folder.



#### Skip the next track

Tap briefly the ▶▶ button to select the next track.

#### Skip the previous track

Tap briefly the ◀◀ button within 5 seconds of playing time.

#### Return the beginning of the current track

Tap briefly the ◀◀ button after 5 seconds of playing time.

#### Search

Tap and hold the ◀◀ or ▶▶ button during playback and then release at the point you want.

You can use Slide bar to search the track.




The || button lets you pause the music.  
To play again, touch the ▶ button.



The ▶ button lets you play all mp3 files in the current folder in Music mode.

## Music Player

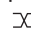
The “Repeat” button lets you set the repeat playback mode.

 1 : Plays repeatedly the current selected file.

 F : Plays repeatedly in within folder.



The “Shuffle” button lets you set the random playback mode.

 F : Plays randomly in within folder.

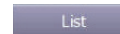
 A : Plays randomly all files.



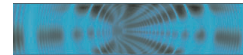
You can tap the “Return” button to close the Music Player and return to the Source menu.



The “List” button lets you return to the Music list screen.



You can select one of 2 modes. It is displayed the change of sound output during playback. tap the image.



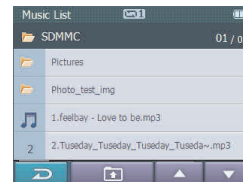
The “LCD On/Off” button lets you save the battery.



### Browse to a file

The Music list screen is displayed, showing the top level folders on your device.

Click the folder icon to display its sub-folders and music files.



You can tap the “Page Up” and “Page Down” arrow buttons to display the sub-folders and music files in the current folder.



You can tap the “Directory Up” button to display the folder immediately above in the folder hierarchy.



The “Return” button lets you return to the previous screen.



## Troubleshooting

### Navigation program and map data protection

- If you want to operate this product properly, there should be the same programs (Contained in LGE folder) and maps (Contained in LGE folder) in Built-in memory which are provided by LGE.
- Don't erase or modify the contents in the LGE folder!  
(It contains important data for Navigation. It may be out of order in case of misuse.)
- Don't delete inner data of the product by using ActiveSync.  
(It contains important data for navigation. It means it will be out of order in case of misuse.)

### Picture format

- JPG: Image file size should be less than 1600 MP (megapixels).
- BMP: Image file size should be less than 500 MP (megapixels).

### Cannot identify the current location. (GPS not receiving)

GPS cannot be used indoors and must be connected to the power with ACC to a vehicle in a location where the sky can be seen well.

When initially connecting the GPS, it usually takes about 10 minutes to operate normally, but the connection speed can differ depending on the weather condition, and surrounding obstacles.

If the GPS connection is unstable for a long period of time, try the following.

- Check if the power is connected to the product.
- Check if the back of the GPS product is in a location where the sky can be seen well.
- If there are high buildings or if you are under a tree, move to a location where there aren't any obstacles.
- Check the GPS receiving condition from the GPS menu.



### **Cannot hear the voice guide.**

You can hear the voice guide when you select "Guidance" in "Setup". But during actual driving, the voice guide is provided.

If the volume is too low, adjust the volume on the right unit.

### **Cannot see the map.**

This is when you cannot see the map even when you have executed the navigation menu.

This happens when the data within the memory is damaged. Delete all the data within the memory and reinstall the data.

If the problem persists after the installation, contact the Customer Service Center.

### **Map data and dangerous area information are not updated.**

You must periodically update the map data.

Refer to the home page for details on how to update the data.

### **The path guide can be different from the actual path. (Path guide error)**

- When the road is closely parallel.
- When the splitting road angle is very small.
- When there is an adjacent road when turning.
- When driving on a road that is narrowing fast.
- When driving through the mountain or where the road is too curvy.
- When the starting, passing and arriving locations are too close within 10 km.
- When you have set the starting, passing or arriving location more than 1 km away from the road.
- When driving through the tunnel.
- When driving through high buildings.

### **There is a difference between the driving road and the road on the map in the product.**

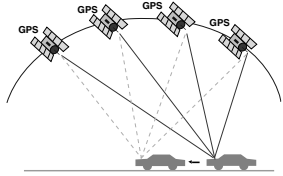
Even though GPS is usually very accurate, it has an error range.

When GPS receiver is installed, there can be an error of about 5 to 15m. But for newly constructed roads, the problem could be from the data update to the map.

# Troubleshooting

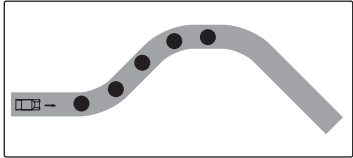
## What is GPS?

The Global Positioning System (GPS) is a satellite-based navigation system made up of a network of 24 satellites placed into orbit by the U.S. Department of Defense. GPS was originally intended for military applications, but in the 1980s, the government made the system available for civilian use. GPS works in any weather conditions, anywhere in the world, 24 hours a day. There are no subscription fees or setup charges to use GPS.

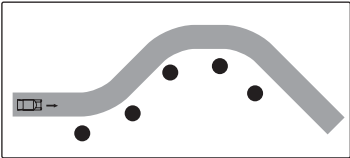


## Map matching

The GPS used by this Mobile Navigation System is susceptible to certain errors. Their calculations may on occasion place you in a location on the map where no road exists. In this situation, the processing system understands that vehicles travel only on roads, and is able to correct your position by adjusting it to a near road. This is called map matching.



With map matching.



With no map matching.



## Troubleshooting

### NAVTEQ Traffic RDS Flow Markets (as of April 2007)

NAVTEQ Traffic RDS is a traffic service distributed to navigation devices via FM-RDS (Radio Data System) technology. Navigation devices receive the information and display it to consumers to enable smarter route guidance.

Via RDS, NAVTEQ reports on traffic conditions in 50 markets. The data stream includes traffic incident and construction data. In addition, traffic flow messages sent in increments of 5 mph are also broadcasted.

The chart below lists the metropolitan areas in which flow is available and not available. In addition, ten markets are listed as "Flow Data Probable."

Flow data will very likely be available in these markets, pending contractual agreements between NAVTEQ and third-party flow data providers.

We list these markets as "probable" so that LG is fully aware that these markets will likely be available with flow data pending the successful inclusion of this data into the NAVTEQ Traffic RDS feed. However, it is not guaranteed that the "Flow Data Probable" markets will be available in April 2007.

City	Traffic Incident Data	Construction Data	Flow Data
Atlanta	Available	Available	Flow Data Available
Chicago	Available	Available	Flow Data Available
Detroit	Available	Available	Flow Data Available
Houston	Available	Available	Flow Data Available
Los Angeles	Available	Available	Flow Data Available
Middlesex-Somerset-Union	Available	Available	Flow Data Available
Milwaukee	Available	Available	Flow Data Available
Minneapolis	Available	Available	Flow Data Available
Nassau-Suffolk	Available	Available	Flow Data Available
New York	Available	Available	Flow Data Available
Phoenix	Available	Available	Flow Data Available
Riverside-San Bernardino	Available	Available	Flow Data Available
Sacramento	Available	Available	Flow Data Available
San Diego	Available	Available	Flow Data Available
San Francisco	Available	Available	Flow Data Available
San Jose	Available	Available	Flow Data Available
Seattle	Available	Available	Flow Data Available



# Troubleshooting

City	Traffic Incident Data	Construction Data	Flow Data
Boston	Available	Available	Flow Data Probable
Washington DC	Available	Available	Flow Data Probable
Denver	Available	Available	Flow Data Probable
Philadelphia	Available	Available	Flow Data Probable
Pittsburgh	Available	Available	Flow Data Probable
Portland	Available	Available	Flow Data Probable
Providence	Available	Available	Flow Data Probable
Salt Lake City	Available	Available	Flow Data Probable
St. Louis	Available	Available	Flow Data Probable
Tampa	Available	Available	Flow Data Probable
Annapolis	Available	Available	No Flow Available
Austin	Available	Available	No Flow Available
Baltimore	Available	Available	No Flow Available
Buffalo-Niagara Falls	Available	Available	No Flow Available
Charlotte-Gastonia-Rock Hill	Available	Available	No Flow Available
Cincinnati	Available	Available	No Flow Available
Cleveland	Available	Available	No Flow Available
Columbus	Available	Available	No Flow Available
Dallas	Available	Available	No Flow Available
Fresno	Available	Available	No Flow Available
Hartford-New Britain-Middletown	Available	Available	No Flow Available
Indianapolis	Available	Available	No Flow Available
Kansas City	Available	Available	No Flow Available
Las Vegas	Available	Available	No Flow Available
Memphis	Available	Available	No Flow Available
Miami	Available	Available	No Flow Available
Nashville	Available	Available	No Flow Available
Norfolk-Virginia Beach-Newport News	Available	Available	No Flow Available
Orlando	Available	Available	No Flow Available
San Antonio	Available	Available	No Flow Available
Sarasota-Bradenton	Available	Available	No Flow Available
Toronto	Available	Available	No Flow Available
West Palm Beach-Boca Raton	Available	Available	No Flow Available

## Specifications

ITEM	SPECIFICATION	REMARK
<b>OS CPU MEMORY</b>	Win CE 5.0 Centrality Atlas-II ARM9 LN790 : 2GB	Built-in Memory
<b>DISPLAY</b>	4.3 inch TFT LCD Resolution 320 X 240 LED type Backlight Touch Screen	LG Philips LCD  Analog resistive type
<b>AUDIO</b>	Mono, Internal Speaker	Typical 1.0W (1EA)
<b>GPS</b>	SiRF star III, Internal Antenna	
<b>NAVI</b>	Full Map (TMC : FM Traffic Receiver)	Voice Guidance
<b>MAP</b>	Navteq	
<b>POWER</b>	DC 5.0 +/- 0.2V	Vehicle Power Cigar-jack Input (12-24V)
<b>TEMPERATURE</b>	Operating : -10~60 °C Storing : -30~80 °C	
<b>Built-in BATTERY</b>	3.7 V (Li-Ion), 1700mA	Up to 6 hours
<b>INTERFACE</b>	Mini-USB Port External GPS Jack	USB 1.1
<b>Multimedia</b>	Image Audio	BMP, JPG MP3, WMA



## LG Electronics, Inc. Limited Warranty - USA

This LG Electronics product, will be repaired or replaced, at LG's option, if it proves to be defective in material or workmanship, under normal use, during the warranty period ("Warranty Period") listed below, effective from the date ("Date of Purchase") of original consumer purchase of the product. This warranty is good only to the original purchaser of the product and effective only when used in the United States, excluding U.S. Territories.

**WARRANTY PERIOD:**

**LABOR:** 90 days from the Date of Purchase.

**PARTS:** One Year from the Date of Purchase.

\* Parts replaced are warranted for the remaining portion of the original warranty period.

**HOW SERVICE IS HANDLED:**

Call 1-800-243-0000 for instructions on getting the defective unit repaired or replaced.

Please retain dated sales receipt and your box to return the unit to LG for repair or replacement.

Shipping both ways will be paid by LG during the first 90 days of the Warranty Period. During the remainder of the Warranty Period (91~365 days), you pay inbound shipping charges and LG pays return shipping charges.

Visit our website at: <http://www.lgservice.com>

**THIS WARRANTY IS IN LIEU OF ANY OTHER WARRANTIES, EXPRESS OR IMPLIED, INCLUDING WITHOUT LIMITATION, ANY WARRANTY OF MERCHANTABILITY OR FITNESS FOR A PARTICULAR PURPOSE. TO THE EXTENT ANY IMPLIED WARRANTY IS REQUIRED BY LAW, IT IS LIMITED IN DURATION TO THE EXPRESS WARRANTY PERIOD ABOVE. LG ELECTRONICS WILL NOT BE LIABLE FOR ANY INCIDENTAL, CONSEQUENTIAL, INDIRECT, SPECIAL OR PUNITIVE DAMAGES OF ANY NATURE, EVEN IF ADVISED OF THE POSSIBILITY OF SUCH DAMAGES, INCLUDING WITHOUT LIMITATION, LOST REVENUES OR PROFITS, LOST OR CORRUPTED PROGRAMMING OR DATA, OR ANY OTHER DAMAGE WHETHER BASED IN CONTRACT, TORT OR OTHERWISE.** Some states do not allow the exclusion or limitation of incidental or consequential damages or limitation on how long an implied warranty lasts, so the above exclusion or limitation may not apply to you. This warranty gives you specific legal rights and you may also have other rights that may vary from state to state.

**THIS LIMITED WARRANTY DOES NOT APPLY TO:**

- Damages or operating problems that result from shipping, installation, adjustment of user controls, calibration, maintenance or failure to maintain, or separate system components; and
- Damages or operating problems that result from normal wear and tear, misuse, abuse, operation outside environmental specifications or contrary to the requirements or precautions in the Operating Guide, accident, lightning strikes or other natural causes, unauthorized modification or alteration, incorrect electrical current or voltage, signal reception or input, software not licensed directly by LG, software errors that do not disable functionality, operating and software protocols adopted after the date of manufacture or for outside the US, institutional or commercial use, or other causes not arising out of defect in material or workmanship.

The cost of repair or replacement under these excluded circumstances shall be borne by the consumer.

**CUSTOMER INTER-ACTIVE CENTER NUMBERS:**

For Warranty Service, Where to buy, Product Assistance, or Customer Assistance

Call 1-800-243-0000 (24 hours a day, 365 days per year) and select appropriate options from the menu.

Or visit our website at <http://www.lgservice.com>

LG ELECTRONICS U.S.A., INC.  
1000 SYLVAN AVENUE  
ENGLEWOOD CLIFFS, NJ

Issue O  
Printed in Korea