


Bluetooth

To connect using the phone settings

Your phone's Bluetooth feature may be set to off by default. To use the Bluetooth feature, Bluetooth must be turned on in your phone. Refer to your phone's user guide.

1. Enable the phone's Bluetooth component. This might be in a menu called Settings, Bluetooth, Connections, or Hands-free.
2. Initiate a search for Bluetooth devices. These settings might be located in a menu called Bluetooth, Connections, or Hands-free.
3. Select the your device from the list of phone.
4. Input the PIN code (0000) in your phone. When it is successfully connected, the  mark is displayed in the "Handsfree - available devices" screen.

Setting the Bluetooth

You must select **Enable** to connect successfully your unit and bluetooth phone.

1. Touch **Options** in the "Handsfree - available devices" screen. And then touch **Enable**.



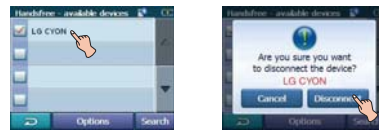
2. Check the PIN code. Change the PIN code using the number buttons if you want to change the PIN code. And then touch **OK**.




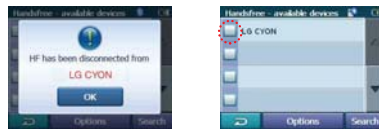
3. If the visibility option has set as **Hidden**. Other Bluetooth devices can't find your device.

Disconnecting/Deleting/Connect-ing again the bluetooth phone

1. Touch the connected phone. And then touch **Disconnect**.




Touch **OK**. Your phone is disconnected and the  mark disappears.



2. Touch the disconnected phone again to connect again or delete your phone.



When you touch **Connect**, the disconnected phone is connected again to the unit. The  mark appears again.



When you touch **Delete**, the disconnected phone is deleted.



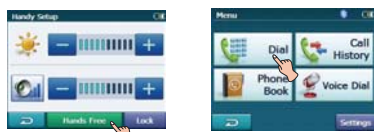
Bluetooth

Making a call with phone number

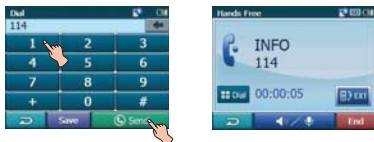
Connect your unit and bluetooth phone before you make a call.

1. Press POWER (⏻) briefly. And then touch

Hands Free > **Dial**.



2. Input the phone number you want to call, by touching the number buttons. And then touch **Send**.



Note

- If you make a mistake while dialling, touch **←** to erase one digit at a time.
- Touch **Save** if you want to store the phone number. It is stored in the phone book.

3. Touch **End** to finish the telephone conversations.



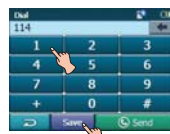
If you want to store the phone number, touch **Save**, then input the name using key board. And then touch **OK** and it is stored in the phone book.

Touch **Redial** if you want to make a call again.

If there is not any touch for about 10 seconds, the screen moves to the "MENU" screen.

Storing the phone number

1. Input the phone number in the "Dial" screen. And then touch **Save**.



2. Input the name. And then touch **OK**. It is stored in the phone book.



Adjusting the Volume/Microphone level

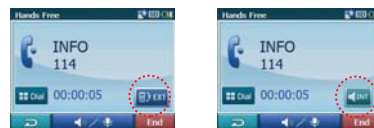
1. Touch **Volume** during a call. The "Volume & Microphone" screen appears.
2. Set the volume (🔊) and microphone level (🔊) by touching **-** / **+** and then touch **OK**.

Note

- Touch **Microphone** to cut the microphone sound. To cancel it, touch **Microphone** again.
- If there is not any touch for about 5 seconds, the screen moves to the previous screen.

Switching the sound path during a call

You can hear sound through the speaker of unit or phone by touching **Unit** / **Phone**.



Note

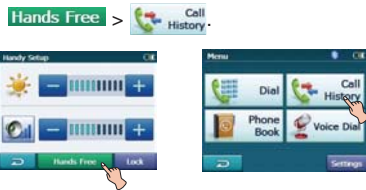
If you want to send the DTMF (Dual Tone Multi-Frequency), touch **DTMF**.

Bluetooth

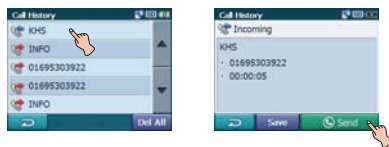
Call History

Your unit keeps a record of your recently received and dialling calls.

1. Press POWER (⏻) briefly. And then touch

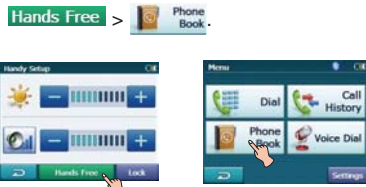


2. Touch the list you want to call. And then touch **Send**.

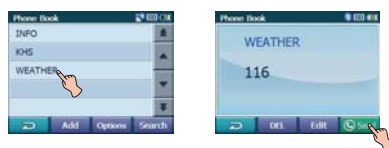


Using your phone book

1. Press POWER (⏻) briefly. And then touch

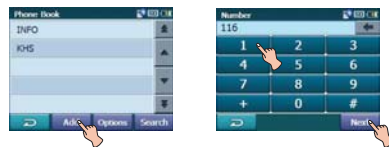


2. Touch the list you want to call. And then touch **Send**.



Adding the phone number

1. Touch **Add** in the "Phone Book" screen. And then Touch **Next** after inputting the number buttons.



2. Touch **OK** after changing the name.



Receiving all list in your phone

Touch **Options** in the "Phone Book" screen. And then touch **Receive**.



- Your device will receive the contact(s) via Bluetooth in your phone. If your phone is not connected, it needs to enter the PIN code in the phone.
- With receiving phone book from your phone, and the data will be stored in the resident memory of your device.



Bluetooth

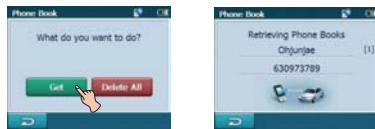
Getting all list from you phone

If your phone supports the synchronization of phone book, you can get all list from the phone.

- * If the phone hasn't been registered to available list on your device, you will meet the below pop-up, "Do you want to get the phonebook from your phone?", after connecting your phone with the your device.



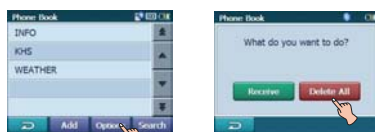
Touch **Options** in the "Phone Book" screen. And then touch **Get**.



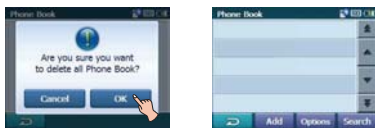
The synchronisation with your phone book will begin automatically, the data will be stored in the resident memory of your device. (It will takes a few minutes according to the number of phone book in your phone.)

Deleting all list in the phone book

1. Touch **Options** in the "Phone Book" screen. And then touch **Delete All**.



2. Touch **OK**.



Deleting the phone number

Touch the list to delete in the "Phone Book" screen. And then touch **DEL**.



Editing the phone number

1. Touch the list to edit in the "Phone Book" screen. And then touch **Edit**.



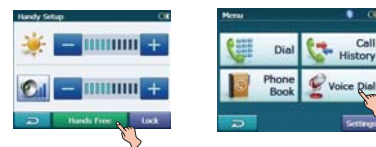
2. Touch **Next** after changing the number. And then touch **OK** after changing the name.



Using voice Dial

You can make a call by speaking the contact's name.

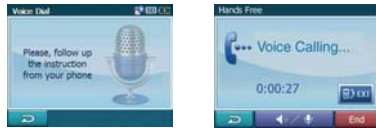
1. Press **POWER** (⏻) briefly. And then touch **Hands Free** > **Voice Dial**.





Bluetooth

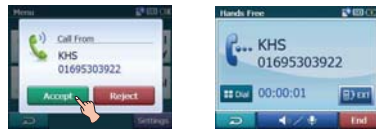
2. Speak the contact name from your phone. And then follow up the instruction from your phone.



3. Touch **End** to finish the telephone conversations.

Incoming calls

1. If there is an incoming call, your phone rings and the "Call from" pop-up screen is displayed on the screen.
2. Touch **Accept** to answer the call.



If you want to reject a call, touch **Reject**.

Ending calls

When you are calling on the map, music, or photo mode, **End** appears in the screen.

Touch **End** to finish the telephone conversations.



Music mode



Map mode

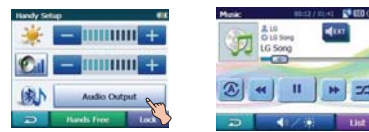


Photo mode

Listening to music files

You can control and hear the music (especially, mp3) files saved on your device via the your stereo headset with *Bluetooth* wireless technology.

Touch **Audio Output** in the "Handy Setup" screen.



Notes

- You can hear the sound through the speaker of unit or Bluetooth stereo headsets by touching **Speaker** / **Headset**.
- The sound quality depends on Radio Frequency (RF) conditions and the sampling rate of audio.
- Sampling rate of MP3 file that can hear the music using Bluetooth stereo headset
 - 16 KHz , 32 KHz , 44.1 KHz , and 48 KHz
 - The sound quality may be poor on the sampling rate of 16 KHz , 32 KHz.



Installation

Installing the Navigator “PC Portal”

Installation the Microsoft .Net Framework 2.0 for computer can be done by following the instructions.

1. Insert the Navigator CD into the PC's CD-ROM drive. The “PC Portal” Installation wizard prompts you to select the language used for the installation process. When you have selected a language, click “OK”.
2. Read the Welcome message and click “Next”.
3. From the Select Directory screen, either accept the recommended default directory or browse to a different directory to install the “PC Portal”. Click “Next”.
4. If you want to change the directory location before installing, click “Back”. When you are ready to install the “PC Portal”, click “Next”.
The installation status box displays the progress of the installation process.
5. When the installation is complete, click the “Finish” button.
6. After finishing installing PC Portal, install the “Maps installer” program. This procedure is similar to PC Portal install.
7. When the installation is complete, click the “Finish” button, The Select Language box appears.
8. From the Select Language dialog box, you can select the display language for the “PC Portal”. Select the Launch “PC Portal” checkbox for “PC Portal” to immediately start and click “OK”. Alternatively, you can start the “PC Portal” from the Microsoft® Windows® Programs menu.

9. Select from up to two connected devices. (N10)

Note

Please pay close attention to all the programs before installing the CD to your personal computer.

Please pay close attention especially for anti-virus programs like spyware.

Recommended PC System Requirements

Please review the following system requirements before installing “PC Portal”:


- CPU: AMD/Intel® Processor 300 MHz or faster
- Operating System: Windows® 2000/XP/Vista
- Memory: 128 MB RAM (minimum)
- Hard drive free space: 500 MB (minimum)
- CD-ROM: 4x drive or higher
- ActiveSync Version 3.8 to 4.2 supported under Windows 2000 and XP
- USB Version 1.1 or 2.0 connection (compatible 2.0)
- Microsoft .Net Framework 2.0

Installation/Using software



Starting the “PC Portal” Wizard

The first time you start the “PC Portal”, the “PC Portal” Wizard automatically starts, letting you install navigator software, supported languages and voice prompts, and maps.


For a complete description of the “PC Portal”, see Using the “PC Portal” on the page 42-43.

1. Click the Microsoft® Windows® Start button.
2. Click the Programs > LGE > “PC Portal”. The “LGE PC Portal for N10” appears.
3. If this is your first time using “PC Portal”, the “PC Portal” wizard automatically starts and displays the Welcome screen.
4. Make sure that your device is connected by USB cable to a port on your PC. You will see Connected on the “PC Portal” screen.
5. Click the   buttons to move to the previous or next screen.
6. Select software components to install to your device.

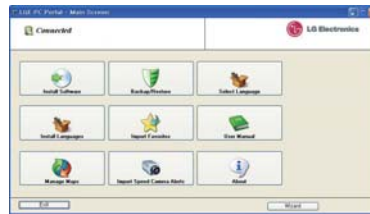
Note

- If you want to start the wizard, click  from the “PC Portal” Main screen.
- If you want to stop the wizard, click .

The “PC Portal” Main screen is displayed.

- If after selecting component, software, and voice options, you want to return to the original selections, click .

Using the “PC Portal”



Click “Install Software” and select from the following components to install to your device:

- LGE: GPS navigation software
- Tutorial: Tutorial guide

To install navigator components:

1. From the Install Software screen, select from the list of components, as described above.
2. Click the Install button.
3. Navigator “PC Portal” installs the selected components to the device’s main memory.



Click “Manage Maps” to install or remove a map.

For more information, see “Installing Maps” on the page 44.



Click the “User Manual” button to see a user manual.



Click the “Select Language” button to show a list of languages that you can choose from to display the “PC Portal”.



Click the “About” button to check software version.



Using software



Click "Import Speed Camera Alerts" to update the Speed Cam. You can visit the Speed Cam Update site.



Click the "Backup/Restore" button to backup the following Navigator items:

- Favorites: All locations that are displayed in Navigator's Favorites screens.
- Trips: All locations that appear in Navigator's Multistops screens.
- LGE Settings: Setting configurations, such as map views (2D/3D and Day/Night), prompts, units of measurement, and map and route setting preferences.

When you select Backup, "PC Portal" makes a copy and stores the information to your computer.

To backup Navigator data to your PC:

1. From the Backup/Restore screen, select Backup.
2. Select the items that you want to make a copy of and save to your computer.
3. Click the "Backup" button.
4. "PC Portal" saves the selected items to your computer.

Click the Backup/Restore button to restore Favorites, Multistops, and My Navigator data to a navigation device. When you select Restore, "PC Portal" recovers the information stored on your computer.

To restore stored Navigator data to a navigation device:

1. From the Backup/Restore screen, select Restore.
2. Select the items that you want to restore.
3. Click the "Restore" button.
4. "PC Portal" restores the selected items.



Click to import favorite locations from your PC to the selected My Favorites group on your device.

For more information, see "Importing Favorite Locations" on page 44.



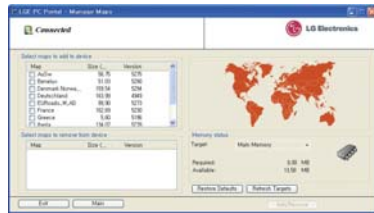
Click Install Languages to install a language to your device.

To install languages:

1. From the Install Languages screen, select the languages to be installed to the device.
2. Click the Install button.
3. Navigator PC Portal installs the selected languages to the device's main memory.
4. You can display the Navigator interface in the language of your choice by tapping the Language Settings button on the Setup menu and selecting the language in Navigator.

Using software

Installing Maps



1. From the Desktop Maps pane, select a map.
2. From the "Target" context box, select the main memory.
3. When you select a Target option (Storage Card, Main Memory) the "PC Portal" displays the following information:
 - Required: The amount of free space necessary to install the map on the selected Target option.
 - Available: The amount of free space available for the selected Target option.

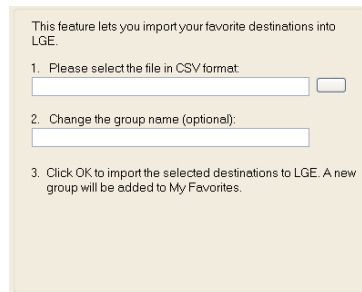
Note: If the free space required is equal or greater than the free space available, "PC Portal" will not install the selected map.
4. Select a map to add or remove.
5. Click the "Add/Remove" button.
6. The selected map is installed and displayed in the Device Maps panel.

Removing Maps

You can remove a map by selecting a map in the Device Maps pane and clicking the "Add/Remove" button.

Importing Favorite Locations

Import Favorites lets you import content created externally as a new Favorites category. You can download a category of favorite destinations from your PC to your device. Destination data must be contained in a comma-separated values (.csv) file. You can import favorites to your device by following the procedure as displayed on the Import Favorites screen.



The .csv file contains the following fields:

Fav. Name	Notes	Longitude	Latitude
Fav.place 1	Comm. 1	39.21370	38.78903
Altitude	City	Street	Address
8033	Munich	Adaloweg	173

- The longitude, latitude, and altitude are numerical values. All other fields contain string values.
- Even if the .csv file does not contain longitude, latitude, and altitude values, the separating commas must still be included.
- The .csv file contains the values in a table as a series of ASCII text lines, organized so that each column value is separated by a comma from the next column's value and each row starts a new line.



Using software

General Warning Messages

The following warning messages can appear when you're working with navigator "PC Portal".

Lost connection transfer

If at any point during the installation or data transfer, the connection to the device is lost, the following message is displayed:
"Connection to the device has been lost. Please check your connection."

Uninstalling Navigator Console

When a version of navigator programme (versions prior to the "PC Portal") is located on your computer, the following message is displayed:

"A previous version of "PC Portal" was found. Do you wish to uninstall?"

It is recommended to uninstall the previous program before installing "PC Portal".

Uninstalling "PC Portal"

When an earlier version of navigator "PC Portal" is located on your computer, the following message is displayed:

"A previous version of "PC Portal" was found. Do you wish to uninstall? "

It is recommended to uninstall a previous version of "PC Portal" before installing the current version.

Updates to "PC Portal"

If there are updates in navigator, you are prompted to download them in the following message:

"There are updates to "PC Portal", do you wish to download and install them?"

Previous maps

If maps from a previous version are located on your computer, the following message is displayed:

"Existing maps data found. Do you want to keep it?"

Clicking "Yes" lets you install maps from previous versions.

Remove maps

The following message appears when you have selected an installed map and clicked the Actions button:

"Selected maps shall be removed from your device. Are you sure you wish to continue?"

Data Transfer

If you close the PC Portal while install navigator software, a map, importing or exporting a Favorite location, or backing up data. the following message appears. : "if you will close the PC Portal now, the [process] shall not be completed. Are you sure you wish to close?".

Backup Data

If stored data is located on your computer, the following message appears:

"Navigator Backup data found. Do you want to keep it?" It is recommended to keep backup data.



Troubleshooting

Navigation program and map data protection

- If you want to operate this product properly, navigation program and map data provided by LGE should be in LGE folder on your navigation device.
- Don't erase or modify any contents in the LGE folder using USB mass storage connection. (All contents are important to operate navigation. Deleting this data may cause navigation to lead to malfunction.)

Audio streaming

To enjoy high quality music using Bluetooth stereo headsets, we recommend over 16-bit audio with sampling rates of 48 KHz and 44.1 KHz. (The sound quality depends on sampling rates of audio and your headset.)

Picture format

JPG: Image file size should be less than 1600 MP (megapixels).

Cannot identify the current location. (GPS not receiving)

GPS cannot be used indoors and must be connected to the power with ACC to a vehicle in a location where the sky can be seen well. When initially connecting the GPS, it usually takes about 10 minutes to operate normally, but the connection speed can differ depending on the weather condition, and surrounding obstacles.

If the GPS connection is unstable for a long period of time, try the following.

- Check if the power is connected to the product.
- Check if the back of the GPS product is in a location where the sky can be seen well.
- If there are high buildings or if you are under a tree, move to a location where there aren't any obstacles.
- Check the GPS receiving condition from the GPS menu.

Cannot hear the voice guide.

You can hear the voice guide when you select

"Guidance" in "Setup".

But during actual driving, the voice guide is provided.

If the volume is too low, adjust the volume on the right unit.

Cannot see the map.

This is when you cannot see the map even when you have executed the navigation menu.

This happens when the data within the memory is damaged. Delete all the data within the memory and reinstall the data. If the problem persists after the installation, contact the Customer Service Center.

Map data and dangerous area information are not updated.

You must periodically update the map data. Refer to the homepage for details on how to update the data.

The path guide can be different from the actual path. (Path guide error)

- When the road is closely parallel.
- When the splitting road angle is very small.
- When there is an adjacent road when turning.
- When driving on a road that is narrowing fast.
- When driving through the mountain or where the road is too curvy.
- When the starting, passing and arriving locations are too close within 10 km.
- When you have set the starting, passing or arriving location more than 1 km away from the road.
- When driving through the tunnel.
- When driving through high buildings.



Troubleshooting

There is a difference between the driving road and the road on the map in the product.

Even though GPS is usually very accurate, it has an error range.

When GPS receiver is installed, there can be an error of about 5 to 15m. But for newly constructed roads, the problem could be from the data update to the map.

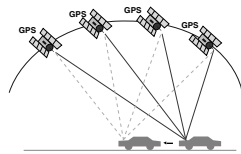
What is GPS?

The Global Positioning System (GPS) is a satellite-based navigation system made up of a network of 24 satellites placed into orbit by the U.S.

Department of Defence. GPS was originally intended for military applications, but in the 1980s, the government made the system available for civilian use.

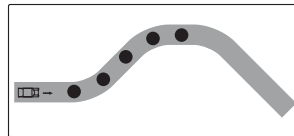
GPS works in any weather conditions, anywhere in the world, 24 hours a day.

There are no subscription fees or setup charges to use GPS.

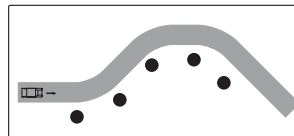


Map matching

The GPS used by this Mobile Navigation System is susceptible to certain errors. Their calculations may on occasion place you in a location on the map where no road exists. In this situation, the processing system understands that vehicles travel only on roads, and is able to correct your position by adjusting it to a near road. This is called map matching.



With map matching.



With no map matching.

Basic operation tips

1. After charging or connecting to a power source, turn the unit on.
2. Make sure you are stopped (not moving) in a location with a clear view of the sky.
3. You will see your current location within a few minutes and then you can start navigating.
4. If the correct location is not found within 6 minutes, restart the unit using the ON/OFF button on the side of the unit.



Bluetooth phone compatibility list

- If even a phone as described in this list meets requirements of Bluetooth Hand-free Profile 1.5 and Object Push Profile 1.1, it can operate. However, it is noted that we cannot assure for operation by function.
- As difference in functional operation by model is mainly resulted from feature of a hand-free phone, consult manufacturer of a phone if you have any question.
- There may be restrictions on using Bluetooth technology depending on some locations or wireless environment. Due to the variety of Bluetooth phones and their firmware version, your device may respond differently when performing over Bluetooth.

Manufacturer	Model	Year	Hansfree Calling	Display Caller ID	Voice Dial	Phone Book Sync	Object Push (vCard)
BLACK BERRY	8100	2007	YES	YES	YES	NO	NO
BLACK BERRY	8800	2007	YES	YES	YES	NO	NO
HP	H6315	2005	YES	YES	NO	NO	YES
HP	HW6915	2007	YES	YES	NO	YES	YES
LG	CU500	2007	YES	YES	NO	NO	YES
LG	CU575	2007	YES	YES	YES	NO	YES
LG	KE500	2007	YES	YES	NO	NO	YES
LG	KE850	2007	YES	NO	NO	YES	NO
LG	KE970	2007	YES	YES	NO	NO	YES
LG	KG245	2006	YES	YES	NO	NO	YES
LG	KG290	2007	YES	YES	NO	NO	YES
LG	KG800	2006	YES	YES	NO	NO	YES
LG	KU380	2007	YES	YES	NO	NO	YES
LG	KU580	2007	YES	YES	NO	NO	YES
LG	KU970	2007	YES	YES	NO	NO	NO
LG	M4410	2006	YES	YES	NO	NO	YES
LG	ME970	2007	YES	YES	NO	YES	NO
LG	MG280	2007	YES	NO	NO	NO	YES
LG	MG320	2007	YES	YES	NO	NO	YES
LG	U890	2006	YES	YES	NO	NO	NO
MOTOROLA	A1000	2004	YES	YES	YES	NO	YES
MOTOROLA	E1000	2005	YES	YES	YES	YES	YES
MOTOROLA	E550	2004	YES	YES	YES	YES	YES
MOTOROLA	KRZR K1	2006	YES	YES	YES	YES	YES
MOTOROLA	RAZR V3i	2006	YES	YES	YES	YES	YES
MOTOROLA	RIZR Z80	2007	YES	YES	NO	NO	YES
MOTOROLA	ROKR E2	2006	YES	YES	YES	NO	YES
MOTOROLA	ROKR E6	2007	YES	YES	NO	NO	YES
MOTOROLA	SLVR L7	2006	YES	YES	YES	YES	YES
MOTOROLA	U6	2006	YES	YES	YES	YES	NO
MOTOROLA	V195	2006	YES	YES	YES	YES	YES
MOTOROLA	V360	2006	YES	YES	YES	YES	YES
MOTOROLA	V525	2004	YES	YES	YES	YES	YES
MOTOROLA	V600	2006	YES	YES	YES	YES	YES
MOTOROLA	V600	2004	YES	YES	YES	YES	YES
NOKIA	3230	2005	YES	YES	YES	NO	YES
NOKIA	3650	2004	YES	NO	YES	NO	YES
NOKIA	5300	2006	YES	YES	YES	YES	YES
NOKIA	5500	2006	YES	YES	YES	NO	YES



Bluetooth phone compatibility list

Manufacturer	Model	Year	Hansfree Calling	Display Caller ID	Voice Dial	Phone Book Sync	Object Push (vCard)
NOKIA	6103	2006	YES	YES	YES	YES	YES
NOKIA	6131	2006	YES	YES	YES	YES	YES
NOKIA	6230	2004	YES	YES	YES	NO	YES
NOKIA	6280	2006	YES	YES	YES	YES	YES
NOKIA	6600	2004	YES	YES	YES	NO	YES
NOKIA	6670	2006	YES	YES	YES	NO	YES
NOKIA	6670	2005	YES	YES	YES	NO	YES
NOKIA	6680	2005	YES	YES	YES	NO	YES
NOKIA	7370	2006	YES	YES	YES	YES	YES
NOKIA	7380	2006	YES	YES	YES	YES	YES
NOKIA	7610	2004	YES	YES	YES	NO	YES
NOKIA	8600	2007	YES	YES	YES	YES	YES
NOKIA	9500	2004	YES	YES	NO	NO	NO
NOKIA	6230i	2005	YES	YES	YES	YES	YES
NOKIA	6820a	2004	YES	YES	YES	NO	YES
NOKIA	8910i	2004	YES	YES	NO	YES	YES
NOKIA	E50	2006	YES	YES	YES	NO	YES
NOKIA	E60	2006	YES	YES	YES	NO	YES
NOKIA	E61	2006	YES	YES	YES	NO	YES
NOKIA	E62	2006	YES	YES	YES	NO	YES
NOKIA	E70	2006	YES	YES	YES	NO	YES
NOKIA	N70	2006	YES	YES	YES	NO	YES
NOKIA	N73	2006	YES	YES	YES	NO	YES
NOKIA	N77	2007	YES	YES	YES	NO	YES
NOKIA	N80	2006	YES	YES	YES	NO	YES
NOKIA	N91	2007	YES	YES	YES	NO	YES
NOKIA	N91	2007	YES	YES	YES	NO	YES
NOKIA	N92	2006	YES	YES	YES	NO	YES
NOKIA	N95	2007	YES	YES	YES	NO	YES
NOKIA	N-GAGE	2004	YES	YES	YES	NO	YES
PALM	TREO750V	2007	YES	YES	NO	NO	YES
SAMSUNG	A707	2007	YES	YES	NO	NO	NO
SAMSUNG	D600	2006	YES	YES	NO	NO	YES
SAMSUNG	D820	2006	YES	YES	NO	NO	YES
SAMSUNG	D900	2007	YES	YES	NO	YES	YES
SAMSUNG	i600	2007	YES	YES	YES	NO	NO
SAMSUNG	T509	2006	YES	YES	NO	NO	YES
SAMSUNG	Z540V	2006	YES	YES	NO	NO	NO
SHARP	GX15	2004	YES	NO	NO	NO	YES
SIEMENS	S65	2004	YES	YES	NO	YES	YES
SIEMENS	SK65	2004	YES	YES	NO	YES	YES
SIEMENS	SX1	2004	YES	YES	YES	NO	YES
SONY	K700i	2005	YES	YES	YES	YES	YES
SONY	K750i	2006	YES	YES	YES	YES	YES
SONY	S700i	2005	YES	YES	YES	YES	YES
SONY	T610	2004	YES	YES	YES	YES	YES
SONY	V800	2005	YES	YES	YES	YES	YES
SONY	W710i	2006	YES	YES	YES	YES	YES
SONY	Z600	2004	YES	YES	YES	YES	YES



Specifications

ITEM	SPECIFICATION	REMARK
OS CPU MEMORY	Win CE 5.0 ARM9 400 MHz 512MB/1GB/2GB (It depends on models.)	Built-in Memory
DISPLAY	3.5 inch TFT LCD Resolution 320 X 240 LED type Backlight Touch Screen	Analog resistive type
AUDIO	Mono, Internal Speaker	Typical 1.0W (1EA)
GPS	SiRF star III, Internal Antenna	
NAVI	EU (It depends on models.) (TMC : FM Traffic Receiver)	Voice Guidance
MAP	Navteq	
POWER	DC 5V/1A	Vehicle Power Cigar-jack Input (12-24V)
TEMPERATURE	Operating : -10 °C to 60 °C Storing : -30 °C to 80 °C	
Built-in BATTERY	DC 3.7 V (Li-Ion), 1100mAh - MP3: 5 hours [Brightness: Minimum, Volume: 5 (Center)] - Navigation: 4.5 hours [Brightness: 5 (Center) , Volume: 5 (Center)] - Photo: 5 hours [Brightness: 5 (Center) , Volume: 5 (Center)]	
INTERFACE	Mini-USB Port External GPS Jack	USB 2.0
Multimedia	Image Audio	JPG MP3



"The Bluetooth word mark and logos are owned by the Bluetooth SIG, Inc. and any use of such marks by LG Electronics is under license. Other trademarks and trade names are those of their respective owners."

P/N: AFN32793967-1