

● Applications

High ceiling spaces Like Warehouse, Storage areas, etc.

● Features

Simple installation just by plugging a sensor Easy adjustment using a rotary dial and a switch Wireless communication at 2.4 GHz Possible to be used for LG Lighting control system.

- Wireless Highbay sensor detects motion and control LG LED Highbay efficiently.

● Dimensions

● Safety Precautions

▲ WARNING
Violation of warnings may lead to serious injury or death.

▲ CAUTION
Violation of precautions may lead to light injury or product damage.

- Do not install the product in areas that have risks of flooding Do not store in a humid area.
- Do not install nearby air conditioners and heaters.
- Do not wipe the surface with inflammables such as alcohol, benzene and acetone.
- Turn power off before install the product.
- Do not disassemble the product.
- Turn power off before install the product.
- Do not install nearby inflammable material.

● Specifications

Model	9SD751TVDA
Sensor	Passive Infrared(PIR) Sensor
Frequency	2405~2480 MHz, 16 ch
Wireless range	Line of sight 98 ft (30 m)
Operating conditions	For Indoor use only
Temperature	Operating : -4 to 122°F (-20 to 50°C) Storage : -22 to 185°F (-30 to 80°C)
Humidity	0 to 85 % Rh
Weight	1.1 oz (30 g)
Dimensions (WHD)	2.6" x 2.1" x 1.0" (75 mm x 54 mm x 25 mm)
Installation height	Typical 20 ft (6 m), up to 40 ft (13 m)
Operating voltage	3.3 V DC (from LG LED lighting)
Current consumption	Max.80 mA
FCC ID	BEJ9SD751TVDA

● Disposal of your old appliance

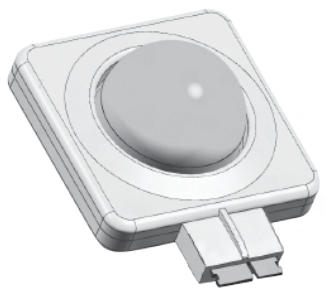
- When this crossed-out wheeled bin symbol is attached to a product it means the product is covered by the European Directive 2002/96/EC.
 - All electrical and electronic products shall be disposed of separately from the municipal waste stream via designated collection facilities appointed by the government or the local authorities.
 - The correct disposal of your old appliance will help prevent potential negative consequences for the environment and human health.
 - For more detailed information about disposal of your old appliance, please contact your city office, waste disposal service or the shop where you purchased the product.
- ※ Check out below address for more information.



LG
Life's Good

MFL68488801

WIRELESS Highbay SENSOR
9SD751TVDA

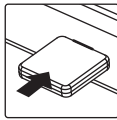


Please read this manual carefully before using the product.

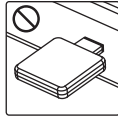
● Installation

Plug the sensor to interface port on compatible LG LED lighting.

▲ WARNING



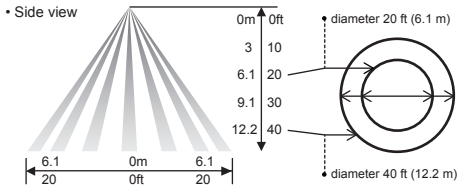
Avoid metal and reinforced concrete walls etc, among sensors if you want to use it for LG Lighting control system.



You have to plug the sensor completely.

● Detection Area

installation height : typical 20 ft (6 m), up to 40 ft (13 m)



If you want to use it for larger areas than one detect area, install multiple sensors and set wireless connection. For further details, see xx page and contact the dealer that you purchased this product.

● Adjustment

- Delay time : occupancy

It is possible to change a delay time from 30 sec to 20 min with the rotary dial. (default : 10 min)

- Dimming level : non-occupancy

It is possible to choose non-occupancy dimming level, OFF or DIM (default : OFF state) If you choose DIM, LG LED Lighting is dim when there is nobody.

- initialized button

Press the button over 5 seconds. If RED LED flashes rapidly for 3 seconds, it is initialized

- 3 -

● LED operation

Flashes once : occupancy detection
Flashes twice : occupancy detection while Lighting System interworking Mode
Flashes four times : setting completion by wireless setting tool
On for 30 seconds after power-up : stability time
Rapid flashes for 3 seconds : initialized
Rapid flashes continuously : It is connected to non-compatible LG LED Lighting so it cannot work normally
Very rapid flashed for 2 seconds : it is hold state about manual setting and network connection state.

● Troubleshooting

It is probably not detect motion. It is not flashes RED LED.

- Check the settings by wireless setting tool. It is possible to select RED LED OFF.
- Check the detection area.
- Make sure installation state. you have to plug the sensor completely.
- On specific operating temperature from 90°F (32°C) to 104°F (40°C), It may not detect motion.

Lighting is not OFF although nobody is occupancy.

- Make sure installation state. you have to plug the sensor completely.
- Check the delay time and dimming level non-occupancy. If delay times is too long or dimming level is DIM state, lighting may be not OFF.

Motion detection is strange. It detects motion abnormally.

- Check the installation environment. If there are air conditioner or heater, it should works abnormally.
- Check the installation state. LED lighting plugged with sensor have to fix on ceiling and not shake.

- 4 -

• Federal Communications Commission (FCC) Statement

You are cautioned that changes or modifications not expressly approved by the part responsible for compliance could void the user's authority to operate the equipment. This equipment has been tested and found to comply with the limits for a Class B digital device, pursuant to part 15 of the FCC rules. These limits are designed to provide reasonable protection against harmful interference in a residential installation. This equipment generates, uses and can radiate radio frequency energy and, if not installed and used in accordance with the instructions, may cause harmful interference to radio communications. However, there is no guarantee that interference will not occur in a particular installation. If this equipment does cause harmful interference to radio or television reception, which can be determined by turning the equipment off and on, the user is encouraged to try to correct the interference by one or more of the following measures:

- Reorient or relocate the receiving antenna.
- Increase the separation between the equipment and receiver.
- Connect the equipment into an outlet on a circuit different from that to which the receiver is connected.
- Consult the dealer or an experienced radio/TV technician for help.

This device complies with Part 15 of the FCC Rules.

Operation is subject to the following two conditions:

- 1) this device may not cause harmful interference, and
- 2) this device must accept any interference received, including interference that may cause undesired operation of the device of the device.

• FCC Caution

Any changes or modifications not expressly approved by the party responsible for compliance could void the user's authority to operate this equipment and For indoor use only, use outdoors or in other modes not covered by this manual may violate the FCC regulation and violate the user authority to use the product.

• FCC RF Radiation Exposure Statement

This equipment complies with FCC radiation exposure limits set forth for an uncontrolled environment. End users must follow the specific operating instructions for satisfying RF exposure compliance.

- 5 -

• FCC WARNING

This equipment may generate or use radio frequency energy. Changes or modifications to this equipment may cause harmful interference unless the modifications are expressly approved in the instruction manual. The user could lose the authority to operate this equipment if an authorized change or modification is made

R&TTE Directive 1999/5/EC
EMC Directive 2004/108/EC
LOW VOLTAGE Directive 2006/95/EC

The products described above comply with the essential requirements of the directives specified. This device is a 2.4GHz wideband transmission system, intended for use in all EU member states and EFTA countries.

Contact office for compliance of this product:
LG Electronics Inc
EU Representative, Krijgsman 1,
1186 DM Amstelveen, The Netherlands

Please note that this is NOT a Customer Service contact point. For Customer Service Information, see Warranty Card or contact the dealer that you purchased this product.

Indoor use only.

CE Notified Body statement.

This is a class B product. In a domestic environment, this product may cause radio interference, in which case the user may be required to take adequate measures.

CE1588

LG Electronics hereby declares declares that this product is in compliance with the following Directives.

- 6 -