



Life's Good

# Scheduling Switch

## USER'S MANUAL

ML67100803 (Rev.14)

ENGLISH

• Please read this manual carefully before installing.

### Safety Precautions

- WARNING**
- Violation of warnings may lead to serious injury or death.
- Before replacing or installing, always turn the POWER OFF.
  - Do not touch product with wet hands.
  - Not suitable for areas where moisture may penetrate the product.
  - Do not install the product near a heat source.
  - Do not dismantle, repair, or modify the product.
  - This product contains chemicals known to the State of California to cause cancer and birth defects or other reproductive harm. **Wash hands after handling.**
- CAUTION**
- Violation of precautions may lead to light injury or product damage.
- Do not install the product near a heat source.
  - Do not give an excessive shock to the product.
  - Install or use in accordance with applicable electrical codes and regulations.
  - Use with correct rated voltage.
  - Do not exceed the allowable capability (up to 400 W). See "Load Requirement".
  - Do not connect a neutral wire to the product.
  - Do not connect the product to a circuit different from that to which the receiver is connected.
  - Use this device only with copper or copper-clad cables.
  - Always check the compatible lights and wire gauge.
  - Protect this from dust and dirt.
  - The controls must be mounted vertically. Refer to the stamped arrow on product.
  - If you are not sure about these instructions, contact an electrician.

Model name	9SMB2B1B5C2	9SMB2B2B5C2
FCC ID	BEJ9SMB2B2B5C2	
IC	2703H-9SMB2B2B5C2	

**Federal Communications Commission (FCC) Statement**

You are cautioned that changes or modifications not expressly approved by the party responsible for compliance could void the user's authority to operate the equipment.

This equipment has been tested and found to comply with the limits for a Class B digital device, pursuant to part 15 of the FCC rules. These limits are designed to provide reasonable protection against harmful interference in a residential installation. This equipment generates, uses and can radiate radio frequency energy and, if not installed and used in accordance with the instructions, may cause harmful interference to radio communications. However, there is no guarantee that interference will not occur in a particular installation. If this equipment does cause harmful interference to radio or television reception, which can be determined by turning the equipment off and on, the user is encouraged to try to correct the interference by one or more of the following measures:

- Reorient or relocate the receiving antenna.
- Increase the separation between the equipment and receiver.
- Connect the equipment into an outlet on a circuit different from that to which the receiver is connected.
- Consult the dealer or an experienced radio / TV technician for help.

**FCC RF Radiation Exposure Statement:**

This equipment complies with FCC radiation exposure limits set forth for an uncontrolled environment. This equipment should be installed and used with minimum distance 20 cm between the radiator & your body. End users must follow the specific exposure compliance. This transmitter must not be co-located or operating in conjunction with any other antenna or transmitter.

This device complies with Part 15 of the FCC Rules. Operation is subject to the following two conditions:

- 1) This device may not cause harmful interference, and
- 2) This device must accept any interference received, including interference that may cause undesired operation.

CAN ICES-3(B)/NMB-3(B)

**Industry Canada (IC) Statement**

This device complies with Industry Canada's applicable licence-exempt RSSs. Operation is subject to the following two conditions:

- 1) This device may not cause harmful interference, and
- 2) This device must accept any interference, including interference that may cause undesired operation of the device.

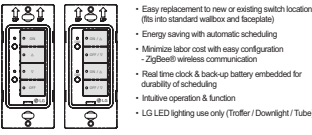
**IC Radiation Exposure Statement:**

This equipment complies with IC radiation exposure limits set forth for an uncontrolled environment. This equipment should be installed and operated with minimum distance 20cm between the radiator and your body.

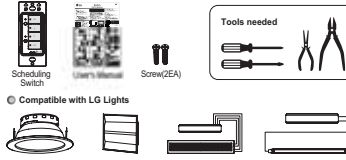
**NOTE: THE MANUFACTURER IS NOT RESPONSIBLE FOR ANY RADIO OR TV INTERFERENCE CAUSED BY UNAUTHORIZED MODIFICATIONS TO THIS EQUIPMENT. SUCH MODIFICATIONS COULD VOID THE USER'S AUTHORITY TO OPERATE THE EQUIPMENT.**

### Product Introduction

#### Wireless remote control & Scheduling & In-wall dimmer

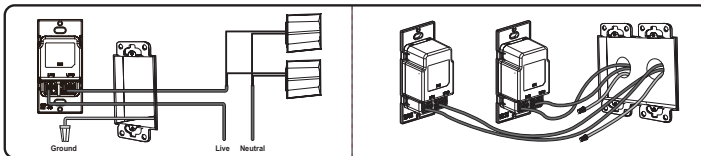
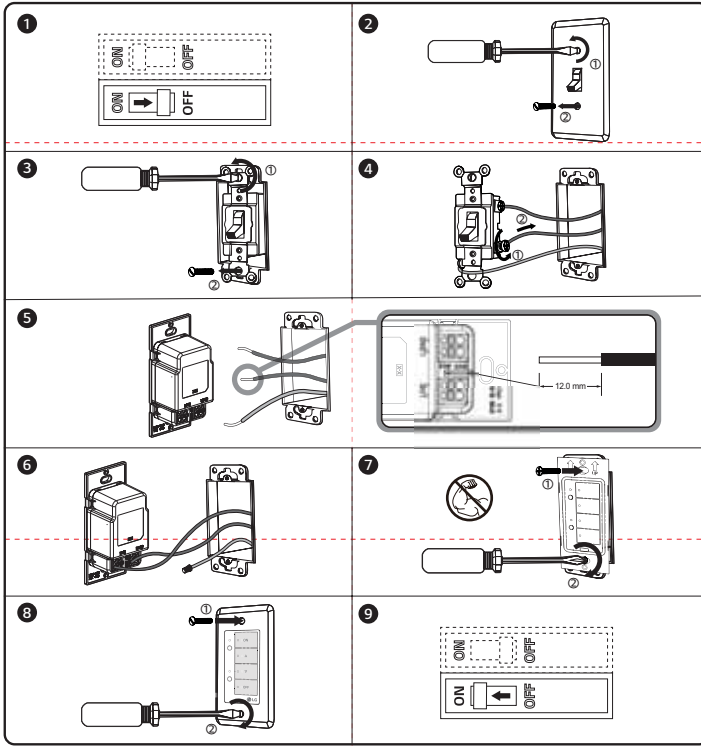


#### Contents Supplied



※ Note: You can mix and match LG light with in switch's allowable current.

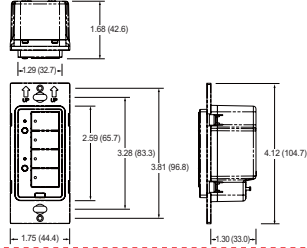
### Installation Guide



### Faceplate Information

Leviton	80401(1Gang)
	80409(2Gang)
Ameralle	8345RA(1Gang)
	8345RAA(2Gang)

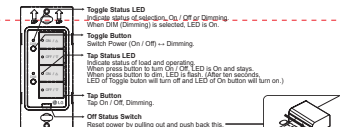
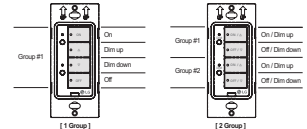
### Product Dimension [Unit: Inch (mm)]



### Specification

Category	Control	Specification
Function	Control	On / Off, Dim, Scheduling (RTC embedded)
	Switching	Auto On / Auto Off Manual On / Manual Off
Wireless	Indicator	LED Hole, Green LED (On / Off)
	Protocol	ZHA & LG Sensor connect
Power	Frequency	2.4 GHz, 30 m
	Input Voltage	120 - 277 V (non-neutral), 50/60 Hz
	Consumption	Max. 0.5 W
Wire Gauge	Min. / Max. Load	Min. 2 W / Max. 400 W
	Stranded Wire	AWG 24-14, 0.2 mm <sup>2</sup> - 2.1 mm <sup>2</sup>
Operation Temperature	Solid Conductor	AWG 28-12, 0.08 mm <sup>2</sup> - 4.0 mm <sup>2</sup>
		-4 ~ +104 °F (-20 ~ +40 °C)
Operation Humidity		below 85%
Certification		Preparing cULus, FCC/IC

### Operation



### Factory Reset



### Load Requirement (@120VAC)

LG Lighting	needed Qty	
	Min.	Max.
Trough	100LPW	2 x 4, 40 W
		2 x 3, 30 W
		1x4, 40W
Down	130LPW	2x4, 31W
		2x3, 29W
		2x2, 25W
B&D Kit	8" LED	4
	2x4x3, 31W	2
	2x4x3, 25W	2
Tube Kit	36W	2
		11



Life's Good

# Commutateur d'ordonnancement

## MANUEL D'UTILISATION

ML67100803 (Rev.14)

FRANÇAIS

• Veuillez lire attentivement ce manuel avant l'installation.

### Précautions de sécurité

- ATTENTION**
- Respect de ces avertissements peut entraîner des blessures graves ou la mort.
- Avant de remplacer ou d'installer, toujours tourner le POWER OFF.
  - Ne pas toucher le produit avec les mains humides.
  - Non adapté pour les zones où l'humidité peut pénétrer le produit.
  - Ne pas installer le produit près d'une source de chaleur.
  - Ne pas démonter, réparer, ou modifier le produit.
  - Ce produit contient des produits chimiques connus par le State of California pour causer le cancer et des défauts de naissance ou d'autres effets néfastes. **Lavez vos mains après la manipulation.**
- PRUDENCE**
- Violation de précautions peut entraîner des blessures ou la lumière d'endommager le produit.
- Ne pas installer le produit près d'une source de chaleur.
  - Ne pas donner un choc excessif au produit.
  - Installer ou utiliser en conformité avec les codes électriques et réglementaires.
  - Utilisez la tension nominale autorisée (jusqu'à 400 W). Voir "Charge requise".
  - Ne connectez pas un fil neutre au produit.
  - Ne connectez pas le produit à un circuit différent de celui auquel le récepteur est connecté.
  - Utilisez uniquement des câbles en cuivre ou en cuivre plaqué.
  - Vérifiez toujours la compatibilité des lumières et du fil.
  - Protégez ce produit de la poussière et de la saleté.
  - Les commandes doivent être montées verticalement. Reportez-vous à la flèche estampée sur le produit.
  - Si vous n'êtes pas sûr de ces instructions, contactez un électricien.

Model name	9SMB2B1B5C2	9SMB2B2B5C2
FCC ID	BEJ9SMB2B2B5C2	
IC	2703H-9SMB2B2B5C2	

**Avis de la Federal Communications Commission (FCC)**

Vous êtes avertis(e) que les changements ou les modifications apportés à cette unité, non expressément approuvés par la partie responsable de la conformité, pourraient annuler le droit accordé à l'utilisateur d'exploiter cet équipement. Cet appareil ne convient qu'à une utilisation intérieure. Une utilisation extérieure ou d'autres façons non couvertes par ce manuel peut constituer un non-respect de la réglementation FCC et porter atteinte aux droits de l'utilisateur à utiliser ce produit.

**CAN ICES-3(B)/NMB-3(B)**

Cet appareil est conforme aux normes CNR d'Industrie Canada applicables aux dispositifs exempts de licence. Son fonctionnement est sujet aux deux conditions suivantes :

- 1) Cet appareil ne doit pas provoquer d'interférences et
- 2) Cet appareil doit accepter toutes les interférences, y compris celles pouvant entraîner son dysfonctionnement.

**Notice d'Industrie Canada (IC)**

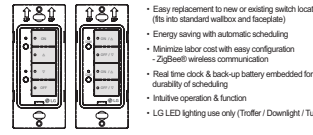
Cet appareil est conforme aux normes CNR d'Industrie Canada applicables aux dispositifs exempts de licence. Son fonctionnement est sujet aux deux conditions suivantes :

- 1) Cet appareil ne doit pas provoquer d'interférences et
- 2) Cet appareil doit accepter toutes les interférences, y compris celles pouvant entraîner son dysfonctionnement.

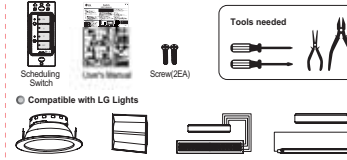
**REMARQUE: LE FABRICANT N'EST PAS RESPONSABLE DES INTERFÉRENCES RADIOÉLECTRIQUES CAUSÉES PAR DES MODIFICATIONS NON AUTORISÉES APPORTÉES À CET APPAREIL DE TELLES MODIFICATIONS POURRAIT ANNULER L'AUTORISATION ACCORDÉE À L'UTILISATEUR DE FAIRE FONCTIONNER L'APPAREIL.**

### Product Introduction

#### Wireless remote control & Scheduling & In-wall dimmer

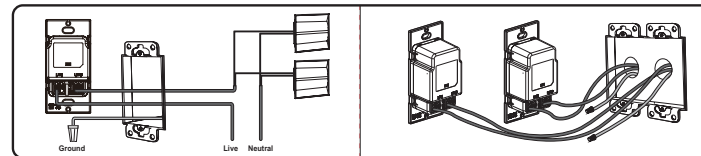
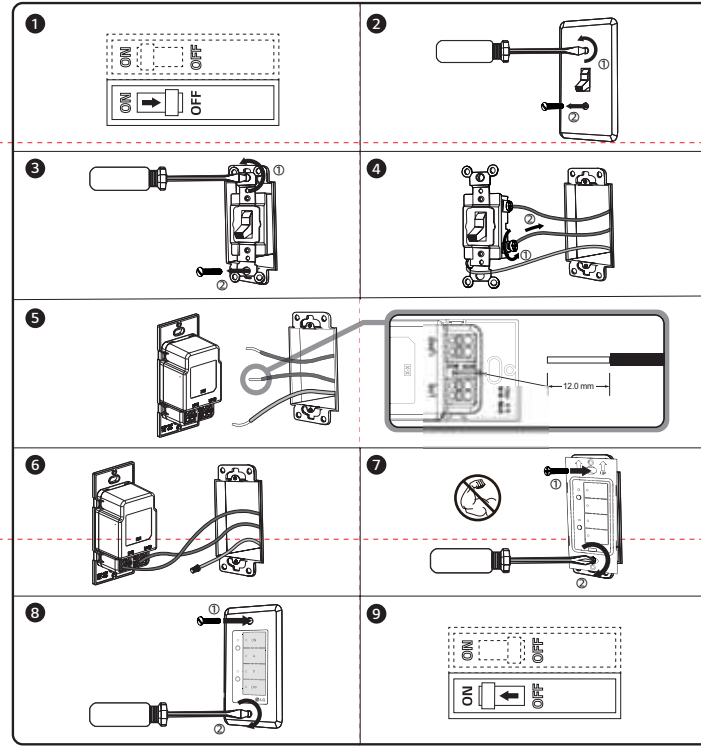


#### Contents Supplied



※ Note: You can mix and match LG light with in switch's allowable current.

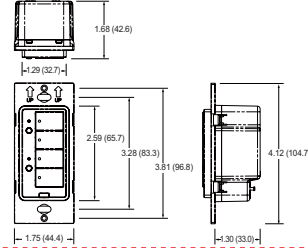
### Installation Guide



### Faceplate Information

Leviton	80401(1Gang)
	80409(2Gang)
Ameralle	8345RA(1Gang)
	8345RAA(2Gang)

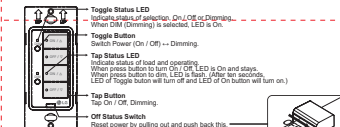
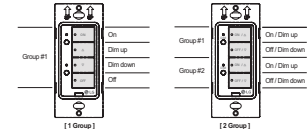
### Product Dimension [Unit: Inch (mm)]



### Specification

Category	Control	Specification
Function	Control	On / Off, Dim, Scheduling (RTC embedded)
	Switching	Auto On / Auto Off Manual On / Manual Off
Wireless	Indicator	LED Hole, Green LED (On / Off)
	Protocol	ZHA & LG Sensor connect
Power	Frequency	2.4 GHz, 30 m
	Input Voltage	120 - 277 V (non-neutral), 50/60 Hz
	Consumption	Max. 0.5 W
Wire Gauge	Min. / Max. Load	Min. 2 W / Max. 400 W
	Stranded Wire	AWG 24-14, 0.2 mm <sup>2</sup> - 2.1 mm <sup>2</sup>
Operation Temperature	Solid Conductor	AWG 28-12, 0.08 mm <sup>2</sup> - 4.0 mm <sup>2</sup>
		-4 ~ +104 °F (-20 ~ +40 °C)
Operation Humidity		below 85%
Certification		Preparing cULus, FCC/IC

### Operation



### Factory Reset



### Load Requirement (@120VAC)

LG Lighting	needed Qty	
	Min.	Max.
Trough	100LPW	2 x 4, 40 W
		2 x 3, 30 W
		1x4, 40W
Down	130LPW	2x4, 31W
		2x3, 29W
		2x2, 25W
B&D Kit	8" LED	4
	2x4x3, 31W	2
	2x4x3, 25W	2
Tube Kit	36W	2
		11