

This device is not intended for sale in the USA.

Part 15.21 statement

" Change or Modifications that are not expressly approved by the manufacturer could void the user's authority to operate the equipment. "

Part 15.105 statement

This equipment has been tested and found to comply with the limits for a class B digital device, pursuant to Part 15 of the FCC Rules.

These limits are designed to provide reasonable protection against harmful interference in a residential installation. This equipment generates uses and can radiate radio frequency energy and, if not installed and used in accordance with the instructions, may cause harmful interference to radio communications. However, there is no guarantee that interference will not occur in a particular installation. If this equipment does cause harmful interference or television reception, which can be determined by turning the equipment off and on, the user is encouraged to try to correct the interference by one or more of the following measures:

- Reorient or relocate the receiving antenna.
- Increase the separation between the equipment and receiver.
- Connect the equipment into an outlet on a circuit different from that to which the receiver is connected.
- Consult the dealer or an experienced radio/TV technician for help.

FCC Part 15 Class B Compliance

This device and its accessories comply with part 15 of FCC rules and ICES-003 Class B digital apparatus requirements for Industry Canada. Operation is subject to the following two conditions:(1) This device and its accessories may not cause harmful interference, and (2) this device and its accessories must accept any interference received, including interference that may cause undesired operation.

Body-worn Operation

This device was tested for typical body-worn operations with the back of the phone kept 2cm (0.79 inches) between the user's body and the back of the phone. To comply with FCC RF exposure requirements, a minimum separation distance of 2cm (0.79 inches) must be maintained between the user's body and the back of the phone. Third-party belt-clips, holsters, and similar accessories containing metallic components should not be used. Body-worn accessories that cannot maintain 2cm (0.79 inches) separation distance between the user's body and the back of the phone, and have not been tested for typical body-worn operations may not comply with FCC RF exposure limits and should be avoided.

Conformité aux normes FCC Part 15 Class B

Cet appareil et ses accessoires sont conformes aux normes FCC Part 15 Class B de la Federal Communications Commission et aux exigences pour appareils numériques ICES-003 Class B d'Industrie Canada. Son fonctionnement est sujet aux deux conditions suivantes : (1) Cet appareil et ses accessoires ne doivent pas provoquer de brouillage préjudiciable, et (2) cet appareil et ses accessoires doivent accepter toutes les interférences reçues, y compris celles pouvant causer un fonctionnement indésirable.

Utilisation comme appareil portatif

Ce téléphone a été testé en vue d'une utilisation type comme appareil portatif, avec une distance de 2 cm (0,79 pouces) entre l'arrière de l'appareil et le corps de l'utilisateur. Pour satisfaire aux exigences de la FCC en matière d'exposition aux radiofréquences, une distance d'au moins 2 cm (0,79 pouces) doit être maintenue entre le corps de l'utilisateur et l'arrière du téléphone. Les pinces de ceinture, les étuis et autres accessoires semblables d'autres marques et contenant des composants métalliques ne doivent pas être utilisés. Les accessoires portatifs empêchant le maintien d'une distance de 2 cm (0,79 pouces) entre le corps de l'utilisateur et l'arrière du téléphone et qui n'ont pas été testés en vue d'une utilisation type comme accessoires portatifs peuvent ne pas satisfaire aux limites d'exposition aux radiofréquences stipulées par la FCC et, par conséquent, ne doivent pas être utilisés.

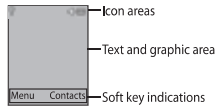


LG-A210a User Guide -English

This guide will help you to understand your new mobile phone. It will provide you with useful explanations of the features on your phone. Some of the contents of this manual may differ from your phone depending on the phone software or your service provider.

P/N: (1.0)

Display Information



On-Screen Icons

	Tells you the strength of the network signal.
	Indicates the battery charge level.
	Indicates new text message(s).
	Indicates new voice message(s).
	Indicates that the alarm clock is set.
	Indicates that your phone is using the general settings.
	Indicates that your phone is using the silent settings.
	Indicates that your phone is using the outdoor settings.
	Indicates that your phone is using the headset setting.
	Indicates that all calls are being diverted to another number.
	Indicates that your phone is in Flight mode.
	Indicates new schedule(s).

Making a call from your contacts

- 1 Press **[Up]** to open the address book.
- 2 On the keypad, enter the first letter of the contact you want to call.
- 3 To scroll through your contacts, use the up and down navigation keys. And to scroll through their different numbers, use the left and right navigation keys.
- 4 Press **[Call]** to initiate the call.

Answering and rejecting a call

When your phone rings, press **Accept** or press **[End Call]** to answer the call. While your phone is ringing, select **Silent** to mute the ringing. This is great if you have forgotten to change your profile to **Silent** for a meeting.

Press **[Call]** or **Reject** to reject the incoming call. **TIP!** You can change the settings on your phone to answer your calls in different ways. Press **Menu**, select **Settings** and choose **Call**. Select **Answer mode** and choose **Any key** or **Send key** only.

123 mode

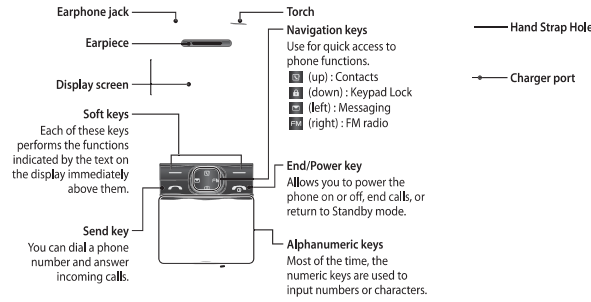
Type numbers using one keystroke per number. You can also add numbers while remaining in letter modes by pressing and holding the desired key.

Contacts

You can search for a contact in your Contacts.

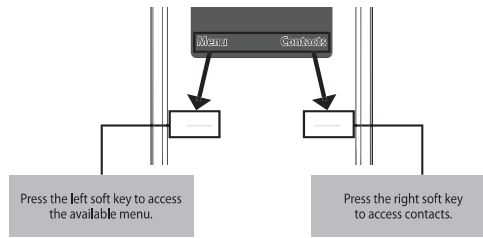
- 1 Press **Contacts** and choose **Search**, select **Contacts** from the **Menu** screen or press **[Right Soft Key]** (right soft key) from the standby screen.
 - 2 On the keypad enter the first letter of the contact you want to call.
 - 3 To scroll through the contacts, use the up and down navigation keys. To scroll through their different numbers use the left and right navigation keys.
- **New contact** – You can add phonebook entries by using this menu.
 - **Speed dials** – Assign contacts to any keys between 2 and 9.
 - **Copy all** – You can copy all entries from the SIM card memory to the Phone memory or from the Phone memory to the SIM card memory.

Getting to know your phone



Menu and Options

Your phone offers a set of functions that allow you to customise it. These functions are arranged in menus and sub-menus, which are accessed via the left and right soft keys. The label at the bottom of the display screen immediately above the soft keys indicates their current function.



Quick feature reference

Messaging

Sending a message

- 1 Press **Menu**, select **Messaging** and choose **New message**.
 - 2 A new message editor will open. The default setting of the message editor is SMS mode.
 - 3 Enter your message using either the T9 predictive mode or ABC manual mode or 123 mode. You can switch text input modes by pressing **[Mode]**.
 - 4 Press **Options** and choose **Insert** to add a **Symbol**, **Template**, **Contact**, **Business card**.
 - 5 Press **Send to**.
 - 6 Enter the phone number or press **Options** and select **Contacts** or **Recent list** to open your contacts list.
 - 7 Press **Options** and choose **Send**.
- **Inbox** – You will be alerted when you have received a message. It will also be saved here.
 - **Drafts** – This menu shows the message you have saved.
 - **Outbox** – This menu allows you to view the message which is about to be sent or could not be sent.

- **Delete all** – You can delete all entries from the SIM card memory or Phone memory.
- **Memory status** – You can check the memory status for your SIM and phone.
- **Information**
 - › **Service dial number** – Access the list of service numbers assigned by your service provider securely.
 - › **Own number** – You can save and check your own numbers on the SIM card.
 - › **Business card** – You can save and check your business card containing information including your name, mobile phone, home, office and email, and send it in a message.

Call history

- You can check the record of all, missed, dialled, received calls and call durations. The number and name (if available) are displayed together with the date and time at which the call was made. You can also view the number of times you have called.
- **All calls** – Displays the lists of all three types (Received/Dialled/Missed calls) by time.
 - **Missed calls** – This option lets you view the last 20 unanswered calls.
 - **Dialled calls** – This option lets you view the last 20 outgoing calls (called or attempted).
 - **Received calls** – This option lets you view the last 20 incoming calls.
 - **Call duration** – Allows you to view the duration of your incoming and outgoing calls.

Installing the SIM Card and Charging the Battery

Installing the SIM Card

When you subscribe to a mobile phone network, you are provided with a plug-in SIM card which is loaded with your subscription details, such as your PIN, any optional services available and many others.

Important! › The plug-in SIM card and its contacts can easily be damaged by scratches or bending, so be careful when handling, inserting or removing the card. Keep all SIM cards out of the reach of small children.
› only 2G/2.5G SIM supported

Illustrations

- 1 Open battery cover
 - 2 Remove the battery
 - 3 Insert your SIM
 - 4 Insert the battery
 - 5 Close the battery cover
 - 6 Charge your battery
- WARNING:** Do not remove the battery while the phone is switched on, as this may damage the phone.

Entering Text

You can enter alphanumeric characters via the phone's keypad. To change modes, press the **[Mode]** key.

T9 Mode

This mode allows you to enter words with only one keystroke per letter. Each key on the keypad is associated with more than one letter. T9 mode automatically compares your keystrokes with an internal linguistic dictionary to determine the correct word, thus requiring far fewer keystrokes than the traditional ABC mode. The input method is displayed in the upper right corner of your phone.

Indicator	Function (English Smart mode)
123	Numeric
abc	Multitap Abc
abc	Multitap abc
abc	Multitap ABC

Turning Your Phone On and Off

You can power the phone on and off by pressing or holding the power key.

Making a Call

- 1 Key in the number on the keypad.
 - 2 Press **[Call]** to initiate the call.
 - 3 To end the call, press **[End Call]**.
- TIP!** To enter + when making an international call, press and hold **0**.

- **Sent** – This menu allows you to view the messages which have already been sent, including time and content.
- **Listen voice mail** – This menu provides you with a quick way to access your voice mailbox.
- **Info messages** – Info service messages are text messages that are delivered by the network to your handset.
- **Templates** – There are pre-defined messages in the list. You can view and edit the template messages or create new messages.
- **Settings** – This menu allows you to set the features of your network service provider.

Entering text

You can enter alphanumeric characters via the phone's keypad. For example, storing names in Contacts, writing a message and scheduling events in the calendar all require entering text. The following text input methods are available in the phone: T9 predictive mode, ABC manual mode and 123 mode.

Note: Some fields may allow only one text input mode (e.g. telephone number in address book fields).

T9 predictive mode

T9 predictive mode uses a built-in dictionary to recognise words you're writing based on the key sequences you press. Simply press the number key associated with the letter you want to enter, and the dictionary will recognise the word once all the letters are entered.

ABC manual mode

This mode allows you to enter letters by pressing the key labelled with the required letter once, twice, three or four times until the letter is displayed.

Games

Your LG-A210a comes with preloaded games to keep you amused when you have time to spare. Press **Menu** and select **Games**.

FM radio (Wireless FM)

With embedded FM antenna, you can receive FM radio without an external earphone. You can listen to your favourite radio station anytime.

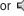
Note: In weak FM radio signal area the sensitivity can degrade with wireless and antenna mode. So it is advisable to insert the ear-mic for better and enhanced FM quality.


Listening to the radio


- 1 Press **Menu** and select **FM radio**.
 - 2 Select the channel number of the station you would like to listen to.
- Note:** You can listen to the radio via built-in speaker. Press **Options**, select **Listen via** and choose **Speaker** when ear-mic is inserted.

Profiles


You change your profile, then choose from General, Silent, Outdoor, Flight mode and Headset.

- **General** – After setting up this profile, the indicator  will be displayed on the standby screen.

- **Silent** – Ring tone is disabled and Vibrate is activated. When you set up this profile, the indicator  will be displayed on the standby screen.

- **Outdoor** – This is the default profile. Ring tone and key tone volume are set to maximum. When you set up this profile, the indicator  will be displayed on the standby screen.

- **Flight Mode** – Use this function to switch the Flight mode On or Off. You will not be able to make calls or send messages when **Flight mode** is switched On.

- **Headset** – When the headset is connected to the phone, the indicator  will be displayed on the standby screen. You can personalise your call alert type, ring tones, ring volume, message alert type, message tones, message volume, keypad tones, keypad volume, effect sound volume and power on/off volume.

Tools

- **Torch** – This allows you to light the place with a lamp. Set it to On and you can find the light on top of the phone. (Press and hold up key so that you can use the Torch on or off.)

- **Calculator** – This contains the standard functions such as Addition, Subtraction, Multiplication and Division.

- **Stopwatch** – This option allows you to use the function of a stopwatch.

- **Unit converter** – This converts any measurement into a unit you want.

- **World clock** – Allows you to determine the current time in another time zone or country.

- **Sim Services** – This feature depends on SIM and the network services. In case the SIM card supports SAT (i.e.SIM Application Toolkit) services, this menu will be the operator specific service name stored on the SIM card.

Organiser

- **Alarms** – You can set up to 3 alarm clocks to go off at a specified time.

- **Calendar** – When you enter this menu, a calendar appears. A square cursor is placed on the current date. You can move the cursor to another date using the navigation keys.

- **Memo** – You can register your own memos here.

Settings

- **Date & Time** – You can set functions relating to the date and time.

- **Language** – You can change the language for the display texts in your phone. This change will also affect the Language Input mode.

- **Display** – You can adjust settings for the phone display.

- **Call** – You can set the menu depending on the call.

- **Auto key lock** – Lock the keypad automatically in standby screen.

- **Security** – This menu allows you to set the phone securely.

- › **PIN code request** – Choose a PIN code to be requested when you turn your phone on.

- › **Phone lock** – Choose a security code to lock your phone. When power on, When SIM changed or Immediately, when roaming, all incoming calls, outgoing international, outgoing international when roaming, all incoming calls, or incoming when roaming.

- › **Fixed dial number** – Choosing a PIN2 code to enable fixed dial number lets you restrict calls to only those in Contacts.

- › **Change codes** – To change your security code or PIN1 or PIN2 code, enter the old code followed by the new one.

- **Power save** – If you set Always on, you can save the battery power when you are not using the phone. Choose to switch between power save settings **Always on**, **Night only** or **Off**.

- **Network selection** – You can select a network that will be registered either automatically or manually.

- **Reset settings** – Use **Reset** to restore the factory settings. You need the security code to activate this function. The default number is '0000'.

- **Memory status** – You can check the free space and memory usage of each repository.