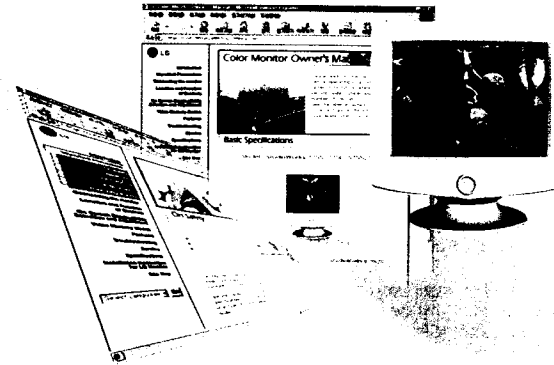


High Resolution Performance &
Convenient Reliable Operation

StudioWorks Monitor 비Sync 모니터

User's Guide
Benutzerhandbuch
Manuel d'utilisation
Guia del Usuario
Guida Utente
사용설명서



 Driver
 Manual



● **FCC**

This equipment has been tested and found to comply with the limits for a Class B digital device pursuant to Part 15 of the FCC Rules. These limits are designed to provide reasonable protection against harmful interference in a residential installation.

This equipment generates, uses, and can radiate radio frequency energy and if not installed and used in accordance with the instructions, may cause harmful interference to radio communications. However, there is no guarantee that interference will not occur in a particular installation.

If this equipment does cause harmful interference to radio or television reception (which can be determined by turning the equipment off and on), the user is encouraged to try to correct the interference by using one or more of the following measures:

- Reorient or relocate the receiving antenna.
- Increase the separation between the equipment and the receiver.
- Connect the equipment into an outlet on a circuit different from that to which the receiver is connected.
- Consult the dealer or an experienced radio/TV technician for help.

Caution: Changes or modifications not expressly approved by the party responsible for compliance could void the user's (or your) authority to operate the equipment. Only peripherals (digital input/output devices, terminals, printers, etc.) certified to comply with the Class B limits may be attached to this monitor. Operation with non-certified peripherals is likely to result in interference to radio and TV reception.

Only shielded Signal Cables may be used with this System.

● **"CE" Conformity Notice**

Products with the "CE" Marking comply with the EMC Directive(89/336/EEC) and LOW VOLTAGE Directive(73/23/EEC) issued by the Commission of the European Community. Compliance with these directives implies conformity to the following European Norms:

- EN 55022 ; Radio Frequency Interference
- EN 50082-1 : 1992 ; Electromagnetic Immunity
- EN 60555-2 ; Power Line Harmonics
- EN 60555-3 ; Voltage Fluctuations
- EN 60950 ; Product safety

● **Canadian D. O. C. Notice**

This Class B digital apparatus meets all requirements of the Canadian Interference-Causing Equipment Regulations. Cet appareil numérique de la classe B respecte toutes les exigences du Règlement sur le matériel brouilleur du Canada.

● **Monitor Registration**

The model and serial numbers are found on the rear of this unit. These numbers are unique to this unit and not available to others. You should record requested information here and retain this guide as a permanent record of your purchase. Staple your receipt here.

Date of Purchase, Dealer Purchased From, Dealer Address, Dealer Phone No., Model No. and Serial No.

Notice

All rights reserved. Reproduction in any manner, in whole or in part, is strictly prohibited without the written permission of Manufacturer.



Important Precautions

On Safety..... A1
 On Installation..... A1

Installation

Connecting the monitor A2

Control Panel Function

Front Panel Controls A3
 On Screen Display (OSD) Control Adjustment A3

On Screen Display (OSD) Selection and Adjustment

Brightness/Contrast/Color/ Position/ Size/ Shape/ Setup A4
 Special A5

CD-ROM Usage

..... A5

Instructions on how to use the CD and its contents

..... A6

Troubleshooting

..... A8

Specifications

..... A9

Important Precautions

This unit has been engineered and manufactured to assure your personal safety, but improper use can result in potential electrical shock or fire hazard. In order not to defeat the safeguards incorporated in this monitor, observe the following basic rules for its installation, use, and servicing. Also follow all warnings and instructions marked directly on your monitor.

On Safety

1. Use only the power cord supplied with the unit. In case you use another power cord, make sure that it is certified by the applicable national standards if not being provided by the supplier.
2. If the power cable is faulty in any way, please contact the manufacturer or the nearest authorized repair service provider for a replacement.
3. Operate the monitor only from a power source indicated in the specifications of this manual or listed on the monitor. If you are not sure what type of power supply you have in your home, consult with your dealer.
4. Overloaded AC outlets and extension cords are dangerous. So are frayed power cords and broken plugs. They may result in a shock or fire hazard. Call your service technician for replacement.
5. **DO NOT OPEN THE MONITOR.** There are no user serviceable components inside. There are Dangerous High Voltages inside, even when the power is OFF. Contact your dealer if the monitor is not operating properly.
6. To avoid personal injury:
 - Do not place the monitor on a sloping shelf unless properly secured.
 - Use only a stand recommended by the manufacturer.
 - Do not try to roll a stand with small casters across thresholds or deep pile carpets.

7. To prevent Fire or Hazards:

- Always turn the monitor OFF if you leave the room for more than a short period of time. Never leave the monitor ON when leaving the house.
- Keep children from dropping or pushing objects into the monitor's cabinet openings. Some internal parts carry hazardous voltages.
- Do not add accessories that have not been designed for this monitor.
- During a lightning storm or when the monitor is to be left unattended for an extended period of time, unplug it from the wall outlet.
- Do not bring magnetic devices such as magnets or motors near the picture tube.

On Installation

1. Do not allow anything to rest upon or roll over the power cord, and do not place the monitor where the power cord is subject to damage.
2. Do not use this monitor near water such as near a bathtub, washbowl, kitchen sink, laundry tub, in a wet basement, or near a swimming pool.
3. Monitors are provided with ventilation openings in the cabinet to allow the release of heat generated during operation. If these openings are blocked, built-up heat can cause failures which may result in a fire hazard. Therefore, NEVER:
 - Block the bottom ventilation slots by placing the monitor on a bed, sofa, rug, etc.
 - Place the monitor in a built-in enclosure unless proper ventilation is provided.
 - Cover the openings with cloth or other material.
 - Place the monitor near or over a radiator or heat source.

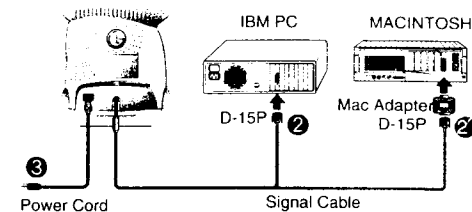
A1

Installation

● Connecting the monitor

On the back of the monitor are two plug-in connections: one for the AC power cord, and the other for the signal cable from the video card.

- 1 Power off both the monitor and PC.
- 2 Connect the 15 pin VGA connector of the supplied signal cable to the output VGA video connector on the PC and the matching input connector on the rear of the monitor. The connectors will mate only one way. If you cannot attach the cable easily, turn the connector upside down and try again. When mated, tighten the thumbscrews to secure the connection.
- 2 Locate the appropriate MAC to VGA adapter block at your local computer store. This adapter changes the high density 3 row 15 pin VGA connector to the correct 15 pin 2 row connection to mate with your MAC. Attach the other end of the signal cable to the side of the adapter block with 3 rows. Connect the attached adapter block/signal cable to the video output on your MAC.
- 3 One end of the AC power cord is connected into the AC power connector on the back of the monitor. The other end is plugged into a properly grounded three-prong AC outlet.
- 4 Power ON the PC, then the monitor.
- 5 If you see the **SELF DIAGNOSTICS** message, check the signal cable and connectors.
- 6 After using the system, power OFF the monitor, then the PC.

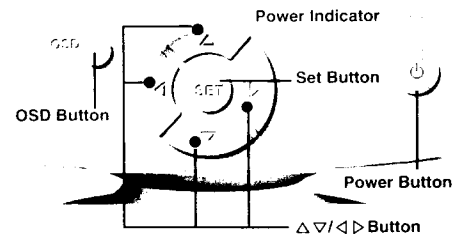


NOTE : For Apple Macintosh use, a separate plug adapter is needed to change the 15 pin high density (3 row) D-sub VGA connector on the supplied cable to a 15 pin 2 row connector.

A2

Control Panel Function

● Front Panel Controls

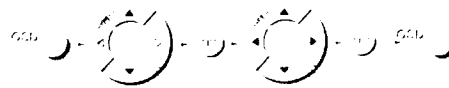


- **OSD Button**
Use this button to enter or exit the on screen display.
- **Δ▽/◀▶ Buttons**
Use these buttons to choose or adjust items in the on screen display.
- **Set Button**
Use this button to enter a selection in the on screen display.
- **Power Button**
Use this button to turn the monitor on or off.
- **Power Indicator**
The power Indicator light is shown in the Power Button. this indicator lights up green when the monitor operates normally. If the monitor is in DPM (Energy Saving) mode (Stand-by/Suspend/Power off), this indicator color change to amber.

A3

● On Screen Display (OSD) Control Adjustment

To make adjustments in the On Screen Display



1. Press the **OSD Button**, then the main menu of the OSD appears.
2. To access a control, use the **Δ** or **▽**Buttons. When the icon you want becomes highlighted. Press the **SET Button**.
3. Use the **Δ▽/◀▶ Buttons** to adjust the item to the desired level.
4. Accept the changes by pressing the **SET Button**.
5. Exit the OSD by pressing the **OSD Button**.

On Screen Display(OSD) Selection and Adjustment

○ Brightness/Contrast

- Brightness**
Used to adjust the brightness of the screen.
- Contrast**
Adjust the display to the contrast desired.

○ Color

- PRESET** **6550K/9300K**
To appear the display's color temperature.
6550K : Slightly reddish white.
9300K : Slightly bluish white
- TEMP** User easily color set without adjustment
Red, Green and Blue(R/G/B).
- RED** To set your own color levels.
- GREEN** To set your own color levels.
- BLUE** To set your own color levels.

○ Position

- Vertical Position**
To move picture image up and down.
- Horizontal Position**
To move picture image left and right.

○ Size

- Vertical Size**
To adjust image height.
- Horizontal Size**
To adjust image width.

○ Shape

- Side Pincushion**
To correct the bowing in and out of the image.
- Side Pincushion balance**
To correct the balance of both sides bowing.
- Trapezoid**
To correct geometric distortion.
- Parallelogram**
This control adjusts for a skewing of the screen image.
- Tilt**
To correct image rotation.

○ Setup

- VIDEO LEVEL** To Select input signal Level(0.7V / 1.0V)
- DDC** To select DDC function (ON/OFF)
- LANGUAGE** To choose the language in which the control names are displayed.
- OSD POSITION** To adjust position of the OSD windows on the screen

A4

Special

- DEGAUSS** To manually demagnetize the screen which may show some image or color incorrectly
- RECALL** If the monitor is operating in a factory preset mode, this control will reset the image to the factory preset mode. If the monitor is operating in a user mode, this control has no effect.
- MOIRE** This item allow you to reduce the moire (Moire is caused by interference Horizontal Scan Line with the periodical dot screen). It is normally OFF(H:0V:0). The moire adjustments may affect the focus of the screen.

CD-ROM Usage

If you have access to a CD-ROM driver, you may find the following information included in our CD-ROM useful; User's Manual, Internet Explorer/*Netscape** Installation and Drive Setup (Monitor Driver installation in Windows 95 and 98), etc.

- The User's Manual may be read in Explorer/*Netscape**(Html document) and Adobe Acrobat (PDF file) format. The Html document can be viewed only in Explorer or Netscape versions 4.0 or higher. If you do not have the appropriate versions of Explorer or Netscape, you may download Explorer 4.0 for PC users and Netscape 4.0 for Macintosh users, from the CD-ROM
- If you do not wish to upgrade or run into problems in the upgrading process, you may read the User's Manual in PDF file format.

<Note>

If you are a Macintosh user, you will have to install Adobe Acrobat Reader, provided in the CD-ROM, in order to read the User's Manual in PDF format.

- Installing the monitor driver in Windows 95 or 98
Installation of the monitor driver allows the monitor to operate with the best possible resolution and frequency providing the user with superior display quality. please refer to the "Appendix" for detailed instructions on the monitor driver installation.

* indicates items which apply to Macintosh users only

A5

Instructions on how to use the CD and its contents.

Please follow the instructions below to view CD contents as well as the User's Manual

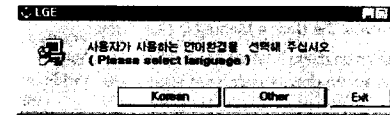
(1) For PC Users

1. Insert the CD-ROM disc that came with your monitor into the computer's CD-ROM drive.
2. You will see the LGE.EXE icon and other folders once the CD-ROM is executed.
3. Double-click LGE.EXE icon.

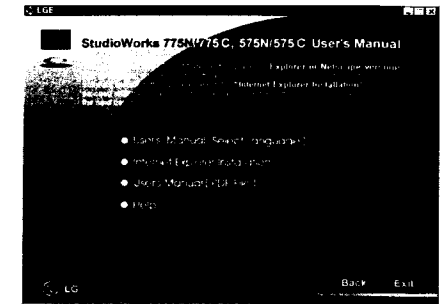
(2) For Macintosh Users

- 1-1 Insert the CD-ROM disc that came with your monitor into the computer's CD-ROM drive.
- 2-1 The CD-ROM disc icon appears on the desktop.
- 3-1 Double-click on the CD-ROM disc icon and then proceed to double-click on the LGE.EXE icon.

4. Please select language.



5. The contents of this CD-ROM are best displayed in Explorer or Netscape versions 4.0 or higher. If your current software version is lower or you do not have the above software installed, then please select the "Internet Explorer/*Netscape** Installation" menu and proceed with the installation. If you already have the software installed, please proceed to the next category.



If you run into problems reading the User's Manual because you are unable to install the software, you may also view the contents by selecting "User's Manual(PDF file)" from the menu.

note : the computer will automatically restart when installation is complete.

6. Double-click on the LGE.EXE icon once the computer is restarted.

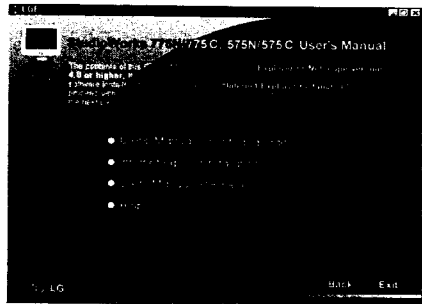
* indicates items which apply to Macintosh users only

A6

7. Please select language.



8. The main menu displays its contents : the User's Manual (Select Language), Internet Explorer /Netscape* Installation, Users Manual(PDF file), Help.



- The **User's Manual** can be viewed in 6 different languages (English, German, French, Spanish, Italian, Korean)
- This section allows you to install Internet Explorer/Netscape* 4.0. Follow the instructions on the screen until the installation is complete.
- You can view the **User's Manual** in PDF format.
- Help topics on using Internet Explorer/Netscape* 4.0.

A7

* indicates items which apply to Macintosh users only

Self diagnostics message.

- The signal cable is not connected.

OUT OF FREQUENCY message appears.

- The frequency of the sync input is outside the operating range of the monitor.
Horizontal Frequency: 30-70kHz
Vertical Frequency: 50-160Hz

Use the graphics board's utility software to change the frequency setting (Refer to the manual for graphics board).

The power LED is illuminated amber.

- Display power management mode.
- There is no sync signal.
- The signal cable is not fastened securely.
- Check the computer power and graphics adapter configuration.

The image on the SCREEN is not centered, or too small, or not a rectangle shape.

- Image adjustment not been done yet in the current operating mode. Use the **OSD, SET and** Δ ∇ / \leftarrow \rightarrow buttons to set the image to your liking.

The monitor doesn't enter the power saving off mode (Amber).

- Computer video signal is not VESA DPMS standard. Either the PC or the video controller card is not using the VESA DPMS power management function.

Note : If the power indicator(LED) light is blinking amber, may result in abnormal condition of the monitor. Then press a power button on the front panel control and call your service technician for more information

How to view the contents of the manual if you do not have Explorer/Netscape versions 4.0 or higher and have problems installing the proper software?

- Select **User's Manual (PDF file)** from the main menu of the CD.

Note : Macintosh users must check to see if Adobe Acrobat Reader is installed in their computers. If not, you must install the software by selecting **D:\Adobe AcrobatReader Installer** from the menu.

The directory in this CD-ROM is organized in the following manner. If the user wishes to custom install items from the directory, the user may go to the following directory and select directory preferred components.

- Html (User's Manual) - D:\Manual\
- Explorer - D:\Explorer\English\ie4setup.exe
- Netscape - D:\Communicator\Netscape\Installer
(Applies to macintosh users only)
- Acrobat - D:\Acrobat\ar302.exe(PC)
D:\Adobe Acrobat\Reader Installer(Mac)

(*D: indicates the CD Drive)

A8

* indicates items which apply to Macintosh users only

Specifications

Model	StudioWorks 775M/775C	StudioWorks 575ME/75C
Picture tube	<ul style="list-style-type: none">● 17 inch (15.9 inches viewable)● 0.27 dot pitch	<ul style="list-style-type: none">● 15 inch (13.8 inches viewable)● 0.28 dot pitch
Power Input	● 100-240 VAC 50/60Hz 2.0A	● 100-240 VAC 50/60Hz 1.5A
Dimensions(W × H × D)	<ul style="list-style-type: none">● 410 × 432 × 440mm● 16.1 × 17.0 × 17.3 inches	<ul style="list-style-type: none">● 360 × 389.5 × 391.5mm● 14.2 × 15.3 × 15.4 inches
Weight(net)	● 15.9kg / 35.05lbs	● 12.6kg / 27.78lbs
Horizontal Frequency	● 30-70kHz (Automatic)	
Vertical Frequency	50-160Hz (Automatic)	
Resolution(maximum)	● 1280 × 1024 @ 60Hz	
Display modes (Resolution)	VGA 640x400 @70Hz VESA 640x480 @60Hz VESA 640x480 @75Hz VESA 640x480 @85Hz MAC 832x624 @75Hz VESA 800x600 @60Hz VESA 800x600 @75Hz VESA 800x600 @85Hz VESA 1024x768 @75Hz VESA 1024x768 @85Hz VESA 1280x1024 @60Hz	VESA 640x480 @75Hz VGA 720x400 @70Hz VESA 800x600 @75Hz VESA 800x600 @85Hz VESA 1024x768 @85Hz VESA 1280x1024 @60Hz

NOTE : Information is subject to change without notice.