



P/N:3828BPH016A



Rev.00

User's Guide



# User's Guide

CK/DK series



DESKTOP PC



NOTEBOOK PC

TOWER PC



# X250



MOUSE



KEY BOARD

X250

CG/CM series

P/N: 3828BPH016A(Rev.00)

## Thank you for using the LG product.

LG has manufactured and tested this product to provide you with a reliable computing environment.

Please read this manual carefully before using the computer.



This sign calls attention to features and operations that may be dangerous to the user. Follow the instruction closely to reduce the risk of bodily harm or damage to the equipment


**1.Warning:** Not following the instruction could result in death or serious injury.

**2.Caution:** Not following the instruction could result in minor or moderate injury and/or damage to the product.

---

**This User's guide is for CG/CM model.  
Instructions may be different depending on models.  
Check your model before reading User's guide.**

**Keep User's guide at a place where other users always can reach**

- 
- Microsoft, MS, MS-DOS, and Windows are trademarks of Microsoft Corporation.
  - IBM, IBM Personal Computer, PS/2 and PC AT are trademarks of International Business Machine Corporation.
  -  **LG** is a trademark of LG.
  - Copyright 2004 LG Electronics, Inc., DigitalMate Co., Ltd.

- Information in this manual may include technical inaccuracies or typographical errors. Images in this manual are for illustrative purposes only and may be different from the actual product.
- LG reserves the rights to make improvements and/or changes to the product without notice.
- Reproducing any or all of the information contained in this publication without written permission is prohibited.
- This computer complies with the radio frequency and safety standards of any country or region in which it has been approved for wireless use.

<b>Contents</b> .....	1
<b>Important Safety Instructions</b> .....	2
<b>1. Installing the system</b>	
1-1 Package contents .....	9
1-2 Components .....	10
1-3 Installing the computer .....	14
1-4 Attaching external devices (customer purchased devices) .....	16
<b>2. Using the system</b>	
2-1 Turning on the computer .....	18
2-2 Using Windows XP .....	21
2-3 Turning off the computer .....	28
2-4 Restarting the computer .....	29
2-5 Using Mouse .....	30
2-6 Cleaning the mouse .....	32
2-7 Using keyboard .....	33
2-8 Using the optical disk drive .....	35
2-9 Using disk drive .....	39
2-10 Computer virus .....	42
<b>3. System Setup</b>	
3-1 Starting the system setup .....	48
3-2 Booting the system floppy disk .....	50
3-3 Booting with a bootable USB device disk .....	51
3-4 Setting a password .....	52
3-5 Changing or removing the password .....	54
3-6 Recovering the factory default settings .....	55
3-7 Using power saving function .....	56
<b>4. System Recovery</b> .....	58
<b>5.Reinstallation of Drivers</b>	
5-1 Reinstalling Printer driver .....	60
5-2 Reinstalling Sound driver .....	64
5-3 Reinstalling Video driver .....	65
<b>6. System Expansion</b>	
6-1 Opening the computer case .....	66
6-2 Main board .....	67
6-3 Connectors .....	68
6-4 Replacing the CPU .....	70
6-5 Increasing memory .....	75
6-6 Adding a hard disk drive .....	79
6-7 Installing expansion cards .....	87
<b>Specifications</b> .....	89

## Important Safety Instructions

These safety instructions will ensure many years of safe enjoyment from the product. Read this safety instructions carefully before installing the computer.

### Installing the computer

#### Warning

##### **Do not operate your computer near water; for example, in a bathroom.**

The computer may not function correctly, and there is the risk of electric shock.

Operate the computer within a temperature range of 41 to 95°F (5°C~35°C) and 30 to 80% of relative humidity.

##### **Safely dispose of the packing materials, such as desiccant and plastic bags.**

Children may swallow desiccant or suffocate from plastic bags.

#### Caution

##### **Keep your computing environment clean and free of dust.**

There is a risk of dysfunction to the computer.

##### **Keep away from the moisture condensation.**

It may damage on the computer. If this happens, turn off the computer and make it dry before power is on.

##### **Do not place any object within 15cm of the computer.**

The computer may overheat and result in fire or injuries.

##### **Keep your computer away from electromagnetic fields.**

Exposure to the electromagnetic field may result in loss of data in the hard disk drive and/or damage to the monitor.

## Connecting to the power



### Warning

**Do not use loose or damaged power plugs.**

There is a risk of electric shock or fire.

**Use a correct voltage outlet.**

There is a risk of fire or electric shock.

**Use properly grounded outlet.**

Connecting the computer to an outlet without proper grounding may result in electric shock and damages to your computer.

**Use your computer at the proper voltage/current level indicated.**

There is a risk of fire or electric shock.

**Do not touch or grab the power plug with wet hands.**

There is a risk of fire or electric shock.

**If you hear a noise from the power cord or outlet, unplug the power cord immediately, and contact the customer service for help.**

There is a risk of fire or electric shock.

**Hold the plug body when removing the power cord from an outlet.**

There is a risk of fire and damages to the computer.

**Make sure the power plug fits snugly into the electrical outlet.**

Loose fit may result in fire.

**Keep near the power cable and power cord clean.**

There is a risk of fire.

**If an object or liquid enters the computer or an adaptor, remove power cord, battery, and any other cables from the computer, and contact the customer service for help.**

There is a risk of an electric shock, fire, or damage to the computer.

**Use properly grounded outlet.**

Connecting the computer to an outlet without proper grounding may result in electric shock and damages to your computer.

**Use your computer at the proper voltage/current level indicated outlet.**

There is a risk of fire or electric shock.

**Do not bend or place a heavy object on top of the power cord. Keep the children and pets from damaging the power cord.**

Damaged power cord may result in electric shock or fire.

## Using the computer



### Warning

**For cleaning your computer, use mild detergent or computer cleaning products. Be sure to dry completely before using the computer.**

Using the computer without completely drying it may result in electric shock or fire.

**During a lightning storm, disconnect the power cord, telephone line, and LAN cable from the computer.**

There is a risk of electric shock or fire.

**Do not place water, chemicals, or liquid of any kind on the computer.**

Liquid of any kind entering inside the computer may result in an electric shock, fire, or damage to the computer.

**Do not connect the modem directly to a multi-line telephone.**

There is a risk of fire or damage to the computer.

**If you drop your computer, remove the power cord and battery pack, and then contact the customer service for check.**

There is a risk of electric shock or fire.

**Do not expose your computer to the direct sunlight.**

The computer may overheat and result in fire or injuries.

**Do not place a burning candle or cigarette on the computer.**

There is a risk of fire or damage to the computer.

**If you see or smell smoke from the computer or adaptor, turn off the computer, remove the power cord, and then contact the customer service for help.**

There is a risk of fire.

**Upon completion of any service or repairs, ask service technician to perform safety checks.**

Ignoring safety checks may result in electric shock or fire.

**Keep the computer away from heat.**

The computer may deform and there is a risk of fire.

**Turn on the external devices first and the system.**

There is a risk of damage to the computer.

**Turn off the external devices first and the system.**

There is a risk of damage to the computer.

**Use only the proper devices to the connector.**

There is a risk of damage to the computer.

**Do not use any damaged CD or floppy disk.**

There is a risk of damage to the computer or injuries.

**Use the Wireless LAN at least 5m away from a microwave oven or plasma lamp. When using the Wireless LAN near a plasma lamp, use the channel 11, 12, or 13.**

The connection can be unavailable or slow.

**Do not press eject button while the CD-ROM or floppy drive is in use.**

Data can be lost and there is a risk of injuries.

**Place the memory card in a correct position when inserting it.**

There is a risk of damage to the memory.

**Do not drop the parts of computer.**

There is a risk of injuries or damage to the computer.

## Carrying and storing the computer



**Before moving the computer, turn the power off and remove all the cables.**

You may trip over the loose cables and fall.

## Upgrading the computer



**Keep screws and other small parts away from children.**

Children may choke on a screw or other small part. If a child swallows a small part, receive a medical care.

**Do not disassemble the power supply devices.**

There is a risk of an electrical shock.

**Before disassembling the computer for upgrading purposes, turn off the power and remove the power cord, phone line, and battery pack.**

There is a risk of electric shock or fire. If you need to open the computer cover, contact the Technical support for help.

**Do not attempt to disassemble or modify the computer without consulting Technical support. If you need to open the computer cover, contact the Technical support for help.**

There is a risk of an electrical shock.

**Always refer to the User's guide**

There is a risk of injury.

**Replace only with the parts approved by LG.**

There is a risk of fire or damage to the computer.

**Consult with the customer service before connecting and using the computer with any non-LG product.**

There is a risk of damage to the computer.



## Preventing data loss (handling hard disk drives)



### Caution

#### **Be cautious when handling the hard disk drive.**

- The hard disk drive is very delicate to any physical impact. Always make backups for your data
- LG is not responsible for the data loss caused by users.

#### **The data on the hard disk or the drive itself may be damaged in the following situations.**

- Exposure to a physical shock during the disassembling or installing process
- The computer is reset (rebooted), for example by power outage, while the hard disk drive is operating
- Exposure to virus
- The computer is turned off during operation

#### **To prevent data loss due to hard disk drive damages, always backup your data.**

LG is not responsible for the loss of data.

## ● Help and Support

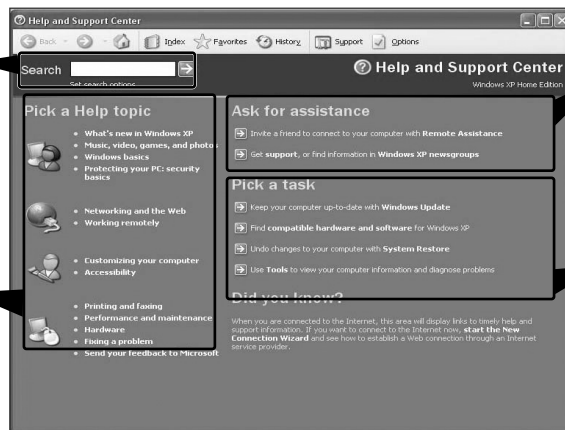
1. Click **[Help and Support]** to learn how to solve problems you may encounter while using the computer. Click **[Start] - [Help and Support]**.



2. Then, the following screen will appear.

Suggested items, text search result, Microsoft Knowledge Base and other contents are investigated. Microsoft Knowledge Base is supported only when the Internet is connected.

By selecting proper items, the user can check functions of Windows XP and troubleshooting.



Through the Internet connection, the user can ask others for a help and receive the telephone number of the technical support center.

The user can configure the optimal environment for computers.

# 1. Installing the system



## 1-1. Contents of the Product

The following items are included in this package. Match the items below with the items in your package. Some items may look different from the pictures.



### Caution

Be sure to use designated cleaning chemicals to clean your computer. Use of other chemicals such as thinner, benzene or alcohol may cause damage or deformation of the product.



CK



DK

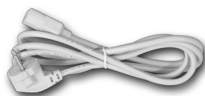
Computer



Keyboard



Mouse



Power cable



User's guide



c

Troubleshooting guide



Modem cable



LG Giljabi CD  
( Software Installations CD)



Recovery CD

## 1-2. Composition

### Front view



**① Power button**

Turns the power on/off the computer.

**② Power/ Hard disk drive status indicator**

Indicates whether the computer is on and the hard disk drive is in use (blinking indicates the hard disk drive is in use).

## Note

- Depending on the hard disk drive, the indicator may not blink and simply goes off during multiple operations.

**③ Floppy Disk Drive**

Enables reading from and writing to a 3.5 inch floppy disk.

**④ Floppy Disk Drive Button**

Floppy disk drive button is used when insert/eject floppy into floppy disk drive

**⑤ CD-ROM Drive Button**

Inserts or ejects a CD in/from the CD-ROM drive.

**⑥ CD-ROM Drive**

Operates a large-capacity data CD or video/audio CD as one of auxiliary memory devices. (Depending on product model, CD-RW and DVD-ROM drives may be equipped.)

**⑦ Sound Connector**

**Earphone Connector**

A port for external earphones.

**Microphone Connector**

A port for external microphone.

**⑧ USB Connector**

Connects to a USB device or HUB. For example, you can connect to a USB mouse, digital camera, or external hard disk drive.

## Note

- Your computer supports USB 2.0.
- Your computer may have different features and configuration from the computers shown above.

## Rear view



## Note

- Your computer may have different features and configuration from the computers shown above.
- Power specifications may be different depending on the country or region, check the power specifications before use.

**① Power Connector**

Connects the power cord to provide power to the computer.

**② Key board Connector**

Connects to a PS/2 keyboard.

**③ Mouse Connector**

Connects to a PS/2 mouse.

**④ Serial Connector**

A serial communication connector to exchange data between the computer and external devices.

**⑤ Video Connector**

Connects the monitor cable to use a built-in video. Does not function when a video card is installed.

**⑥ Parallel Connector**

Parallel communication connector to transmit data from the computer to external devices, mostly to the printer.

**⑦ USB Connector**

Connects USB devices or hubs such as USB mouse or digital cameras.

**⑧ Sound Connector**

**External Speaker Connector**

Hosts an external speaker Connector.

**Line Input Connector**

Hosts an external audio Connector.

**Microphone Connector**

Hosts an external microphone Connector.

**⑨ LAN Connector**

Connects other systems and hubs through the UTP at 10/100/1000 Mps.

## Note

- Modem cable is offered for models that support modem card.

## 1-3. Installation

Installation is not difficult, and we recommend users to install by themselves. Before installation, turn off the computer and all peripheral devices. As the keyboard and the mouse use same-shaped connectors, please check the symbols next to the mouse connector hole and the keyboard connector hole. Card composition is different from product to product.



### Note

- For USB mouse users, USB connectors are located both the front and rear of the computer.



### Warning

- Do not place a glass or container with water, chemicals, or liquid of any kind in it on the computer.

There is a risk of electric shock and/or damage to the computer.



## 1 Connecting the Keyboard

The keyboard cable has a round connector with 6 pins.



Insert the keyboard connector pin correctly in the keyboard connector hole on the rear panel of the computer. Insert the keyboard cable connector as shown in the figure.

## 2 Connecting a Mouse

The mouse cable has a round connector with 6 pins.



The round connector on the mouse cable fits into the PS/2 connector on the rear of the computer. Be sure to align the 6 pins on the cable with the corresponding holes on the connector.

## 3 Using the Keyboard Support

The keyboard stand is located at the bottom of the keyboard.



Raise the keyboard supports to relieve fatigue on the wrists.

## 4 Connecting Power

Power supply is 110V/220V (selection) or 220V only.



Connect the power cord to the computer and the outlet on the wall.



### Warning

- Power supply is 110V/220V (selection) or 220V only.
- Check the location of the switching button when 110V/220V (selection) is used.



- Operate the product at the proper voltage when selecting 110V or 220V power supply. Incorrect use of power supply may damage on the product or fire.

## 1-4. Connecting Peripheral Devices (To Be Separately Purchased)



### Note

- Your computer may have different features and configuration from the pictures shown above.



### Warning

- Do not connect too many cables to one extension cord. An electric shock may occur.
- Do not leave the power cord below the body.
- Do not touch the outlet when connecting or disconnecting the power cord. An electric shock may occur.

## Connecting a monitor(customer purchased device)

The monitor cable and power cord are included with the monitor. For using the monitor, refer to the user manual that comes with the monitor.



When using a built-in video



When the video card is installed

- ❶ Connect the monitor signal cable to the Video port to transmit computer signals to the monitor.
- ❷ Connect the monitor power cable both to the monitor and the power outlet to supply power to the monitor. When turning on/off the computer, turn on/off the monitor. When using the same power supply unit for the computer and the monitor, check the voltage of the monitor before turning on.

## Connecting a printer(customer purchased device)

The printer cable and power cord are included with the printer. For using the printer, refer to the user manual that comes with the printer.



- ❸ Connect the printer cable to the parallel connector on the computer.
- ❹ Connect the printer cable to the parallel connector on the printer.
- ❺, ❻ Connect the power cord to the printer and plug it into an electrical outlet.

## Connecting the Speakers (To BE Separately Purchased)

Your computer does not have built-in speakers. You must attach an external speaker to output sound.



- ❿ Connect a speaker cable to the speaker connector on the rear of the computer.

### Note

- In the case where sound is too low or mute, adjust the volume by clicking on the [Volume] icon on the right end of the Windows task bar.



# 2. Using the System



## 2-1. Turning on the computer

Check if the floppy disk drive on the front part of the computer is empty and the power cord and the peripheral devices are connected to the computer on the rear panel. After installing the system, register user information. Turn on the power of the main body, and register user information by following the Windows screen instructions.

### ● Registration process

- 1 Pressing the power switch starts the self-diagnostic procedures; then Windows(R) XP startup screen is displayed. In a moment, a dialogue box, saying **"Welcome to Microsoft Windows"** appears on the screen. Then Click **[Next]**.



- 2 After **"Help protect your PC"** message appears on the screen, select **"Help protect my PC by turning on Automatic Updates now"** and then press **[Next]**.

