

● Norton Antivirus update

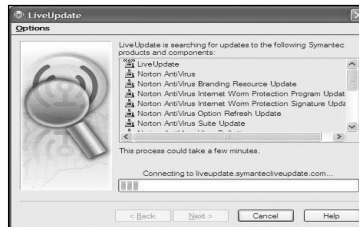
You should have an internet access to process Norton Antivirus update.

1 Click **[Start]** and **[All programs]**→**[Norton Antivirus]**→**[Live Update]**-**[Norton AntiVirus]**.

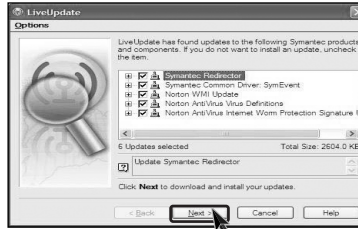
2 Click **[Next]**.



3 Following window appears.



4 Click **[Next]**.



5 Downloading update-items online.



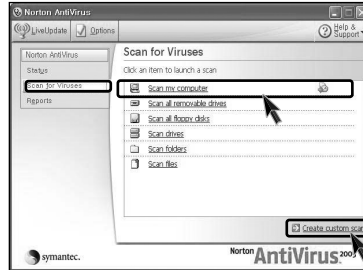
6 Click **[Finish]** . Norton Antivirus Update is complete.



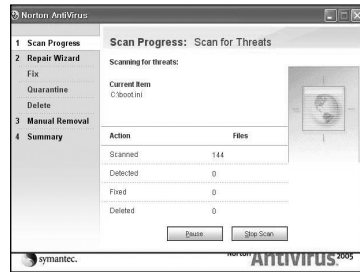
● Running Norton Antivirus

1 Click **[Start]**→**[All programs]**→**[Norton Antivirus]**→**[Norton AntiVirus2004]**.

2 Click **[Scan for virus]** and select an item to scan.



3 Norton AntiVirus is scanning virus.

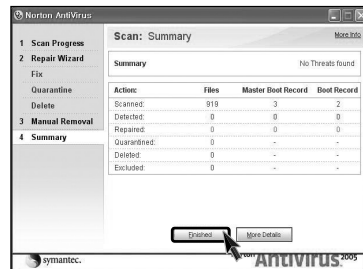


Note

- If any virus is detected, click **[Fix]** to repair.



4 Click **[Finish]**. Virus scanning is complete.



memo

3. System setup



The system setup saves your computer's hardware configurations in CMOS RAM. The system setup provides you with information, such as the size and type of your hard disk, size of the installed memory, date, and time.

3-1. Starting the system setup

You may want to use the CMOS Setup Utility in the following situations:

- Booting the system using a startup FDD. (Page 50)
- Setting a password. (Page 52)
- Changing or removing the password. (Page 53)
- Recovering the factory default settings. (Page 55)



Caution

Do not change the system setup arbitrarily. Incorrect system setup may result in errors while using the computer.

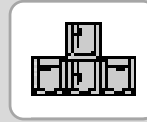
The menu and default factory settings of the CMOS Setup Utility may look different from this manual. They may have been changed to improve the performance of the system.

● Keys used in the CMOS Setup Utility

Keys	Function
[Enter]	Select the current item.
[Esc]	Close the current window or move to the previous window.
[↑],[↓],[←],[→]	Move up, down, left, and right.
+/-	Increase or decrease the value
[Page Up]	Increase or decrease the value.
[Page Down]	Increase or decrease the value.
[F10]	Save or exit the system setup.

Note

- Cursor control keys (arrow keys) move the cursor up, down, to the left and right. If Num Lock button is off, the arrow keys in the numeric keypad can be used just like the cursor control keys.



⟨Cursor keypad⟩



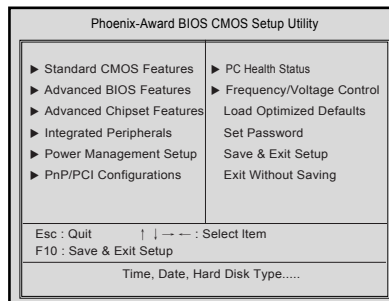
⟨Numeric keypad⟩

1 Turn on the computer and monitor.

2 When LG logo appears on the screen, press **[Delete]**.



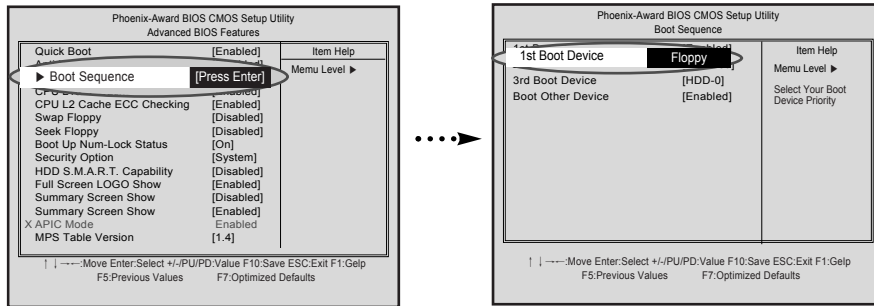
2 The CMOS Setup Utility window appears.



3-2. Booting with a bootable FDD

Follow the instruction below to set the floppy disk as start up disk.

- 1 Open the CMOS Setup Utility. Use the arrow keys to select **Advanced BIOS Features** and press **[Enter]**.
- 2 Use the arrow keys to select **Boot Sequence**, and then select **1st Boot Device** to select **Floppy**. Use page up/down key to select **Floppy**.



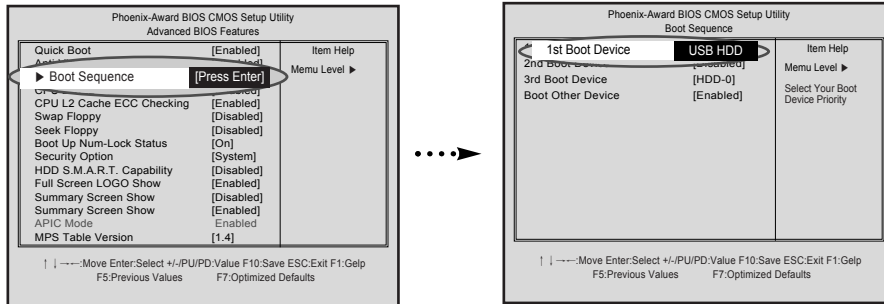
- 3 Press **[F10]** to save the new setting.
- 4 When the following message appears, press **[Enter]**. The computer restarts.

SAVE to CMOS and EXIT(Y/N)? Y

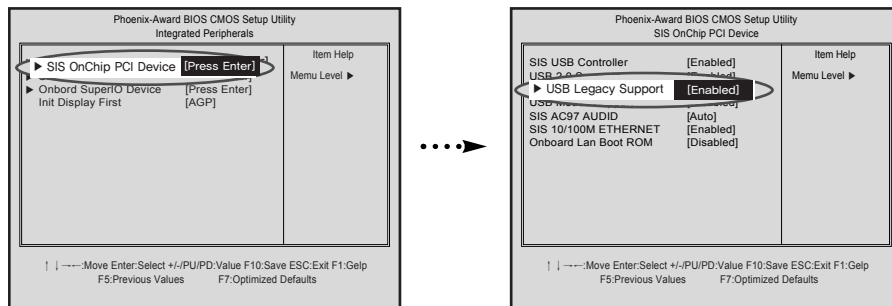
3-3. Booting with a bootable USB Device disk

Follow the instruction below to set the USB disk as start up disk.

- ❶ Open the CMOS Setup Utility. Use the arrow keys to select **Advanced BIOS Features** and press **[Enter]**.
- ❷ Use the arrow keys to select **Boot Sequence**, and then select **1st Boot Device** to select **USB HDD**. Use page up/down key to select **USB HDD**.



- ❸ Open the CMOS Setup Utility. Select **Integrated Peripherals**, and then press **[Enter]**.
- ❹ If following dialogue box appears, select **SIS On PCI Device** and press **[Enter]**. **USB Legacy Support** and choose **Enabled** using page up/down keys.



- ❺ Press **[F10]** to save the new setting.
- ❻ When the following message appears, press **[Enter]**. The computer restarts.

SAVE to CMOS and EXIT(Y/N)? Y

3-4. Setting a password

If you want to protect the system setup from unauthorized users, follow the instruction below to set a password.

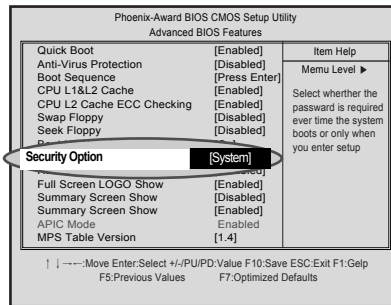
You can set a password in the CMOS Setup Utility program.



Caution

If you forget the password, you cannot gain access to your system. Be sure to write down the password in a safe place only you can refer to in case you forget the password.

- 1 Start the CMOS Setup Utility. Use the arrow keys to select **Advanced BIOS Features**, and then press **[Enter]**.
- 2 Use the arrow keys to select **Security Option**. Use the Page Up and Page Down keys to select **Setup** or **System**, and then press **[Esc]**.



Note

- If you select Setup in the Security Option, the computer asks for a password next time you try to enter the CMOS Setup Utility. If you select System, the computer asks for a password next time you start the computer and also when you try to enter the CMOS Setup Utility. Setting the System password prevents unauthorized users from using the computer or changing the system setup.

- 3 Use the arrow keys to select **Set Password**, and then press **[Enter]**.

- 4 If the following message appears, enter the new password and then press **[Enter]**.
A password must consist of characters A~Z and numbers 0~9, and has the maximum length of 8.

Enter Password :

- 5 If the following message appears, enter the password again, and then press **[Enter]**.

Confirm Password :

- 6 Press **[F10]** to save the new settings.

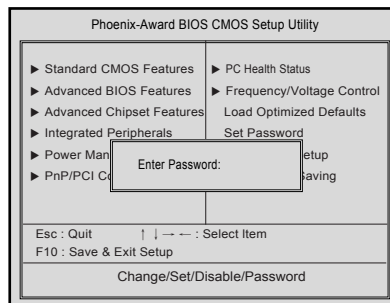
- 7 If the following message appears, press **[Enter]**. The computer restarts.

SAVE to CMOS and EXIT(Y/N)? Y

3-5. Changing or removing the password

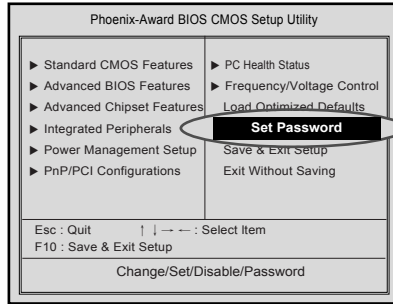
You must know the password to change or remove it.

- 1 Start the CMOS Setup Utility, enter your password, and then press **[Enter]**.

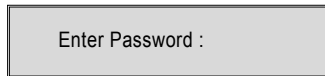


- To change the password, follow the instructions on Setting a password.
- To remove the password, follow the instructions below.

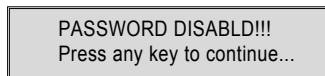
2 Use arrow keys to select **Set Password**, and then press **[Enter]**.



3 If the following message appears, press **[Enter]**.

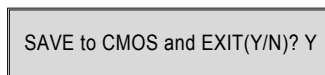


4 If the following message appears, press **[Enter]**.



5 Press **[F10]** to save the new setting.

6 If the following message appears, press **[Y]** key and **[Enter]**. The computer restarts.



3-6. Recovering the factory default settings

You can follow the instructions below to recover the factory default settings.

- 1 Start the CMOS Setup Utility. Use the arrow keys to select **Load Optimized Defaults** and press **[Enter]**.
- 2 If the following message appears, press **[Y]** key and then **[Enter]**. The factory default settings have been recovered.

Load Optimized Defaults (Y/N) ? Y

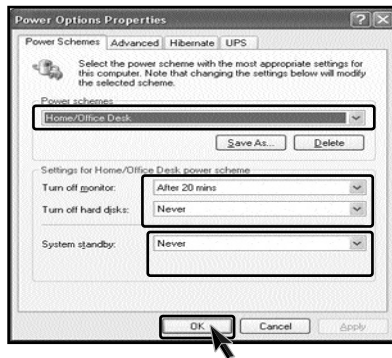
- 3 Press **[F10]** to save the new setting.
- 4 If the following message appears, press **[Enter]**. The computer restarts.

SAVE to CMOS and EXIT(Y/N)? Y

3-7. Using Power saving function

You can use power saving function in Windows OS no matter how you set the BIOS setup.

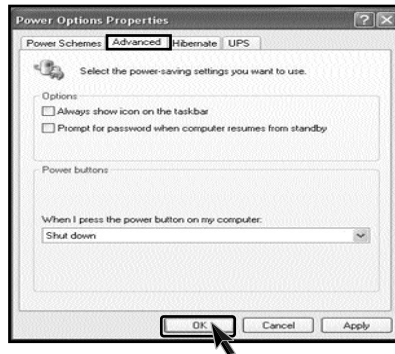
- 1 Click **[Start]**→**[Control panel]**→**[Switch to classic view]**.
- 2 Double click Power option icon from the control panel.
- 3 Set the Power option properties and click **[OK]**.



Warning

There are some devices which do not support the power saving function properly. If you have installed such devices, you should disable power saving function.

- 4 Click **[Advanced]** for setup if necessary and then click **[OK]**.



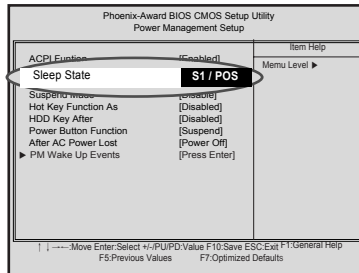
Note

- **Hibernation mode:** It saves data and turns off the power and then restores data when the system starts again.

Your computer has ACPI Standby State in the system setup set to S3(STR) to manage power more effectively in standby mode. Use the power button to exit standby mode. If you want to use a keyboard stroke or mouse movement to exit standby mode, change S3(STR) to S1(POS).

Note: S1(Power On Suspend), S3(Save to Ram)

- 1 Start the CMOS Setup Utility. Use the arrow keys to select **Power Management Setup** and then press **[Enter]**.
- 2 Use the arrow keys to select **Sleep State**, and PageUp and PageDown keys to set **S1(POS)**.



- 3 Press **[F10]** to save the new setting.
- 4 If the following message appears, press **[Enter]**. The computer restarts.

SAVE to CMOS and EXIT(Y/N)? Y

4. System Recovery



The system setup saves your computer's hardware configurations in CMOS RAM. The system setup provides you with information, such as the size and type of your hard disk, size of the installed memory, date, and time.

● Restoring the system by using Recovery CD

You can restore your computer system by using Recovery CD, shipped with your Computer.

You can select two options (Full Recovery without Format / Full Recovery after Format.)

For Windows users

- 1 Please make backup files from your Computer.
- 2 Insert the Recovery CD into the CD-ROM drive, and then turn off your computer. Turn on your Notebook PC, and then press **[Enter]** when "Press any key to boot from CD" message appears on the screen.
- 3 Follow the instructions to install the Widows operating system.
- 4 After the installation is complete, remove the Recovery CD from your computer and then restart the computer. Start the registration procedure by following instructions on the screen.



5. After the Windows operating system installation is complete, install the LG GILJABI CD (software installation CD) on your computer, and then you can use all application programs and device drivers.

● To install Windows XP upgrade

1. If Windows XP is already installed on your computer, simply install Windows XP for upgrade purpose without formatting hard disk.
2. If you have Windows Operating system running on your computer, follow the instructions to install Windows XP upgrade.

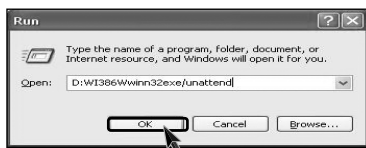
1 Turn on the computer that has Windows XP installed.



2 Click **[Start]** and then select **[Run]**.



3 Insert Recovery CD on your computer, and then type `D:\wi386\winnt32.exe/unattend` on the **[Run]** dialogue box and press **[OK]**.
(In case CD-ROM drive is located at (D:))



Note

- If `winnt32.exe` is applied without "unattend" option, Input Product key number, written on the computer. You should register Windows XP OS in 30days.

5.Reinstalling the driver



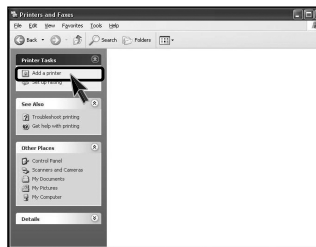
5-1.Reinstalling the print driver

After connecting a printer, you should install the printer driver. Windows XP automatically recognize the printer driver. If the printer driver does not function correctly, re install the printer driver by following instructions.

❶ [Start] - [Control panels] - [Switch to classic view].

❷ Double-click [Printer&Fax] () icon.

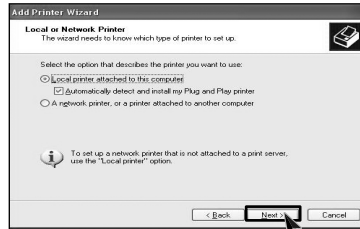
❸ If the following dialogue box appears, select [Add a printer].



❹ After "Welcome to the add printer Wizard" dialogue box appears,click [Next].



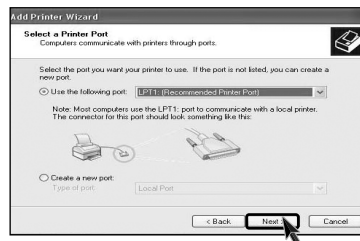
5 Select **[Local or Network Printer]** and then click **[Next]**.



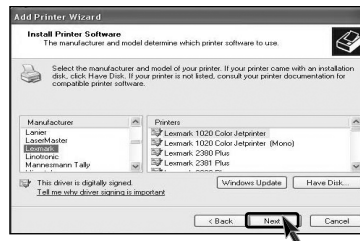
6 **[New Printer Detection]** dialogue box appears, click **[Next]**.



7 Select LPT1 and then click **[Next]**.

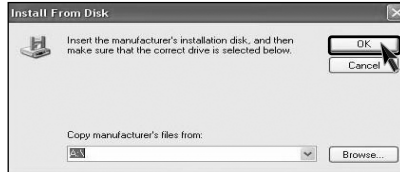


8 Select Manufacturer and printer, and then click **[Next]**. If your computer came with an installation disk, click **[Have Disk]**.



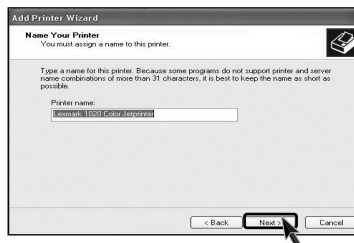
[Have disk] button was selected

- 9 Insert the manufacturer's installation disk, and then make sure that the correct drive is selected below.

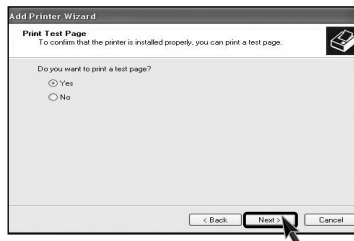


[Next] button was selected

- 9 You must assign a Printer name, and then click **[Next]**.



- 10 Print Test Page appears, click **[Yes]** and then press **[Next]**.



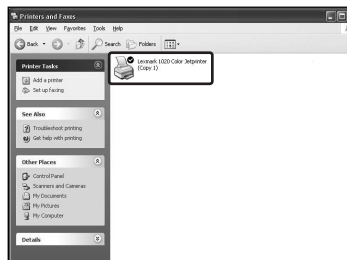
11 Test page is now printing, click **[OK]**.



12 If followig dialogue box appears, click **[Finish]**.



13 Adding the new printer process is now completed.



5-2.Reinstalling the sound device driver.

Sound driver enables you to listen music files and CD from your computer. Sound driver is came with your computer. But if the computer does not recognize the sound driver, you should re-install the sound driver.

- 1 Turn on the computer and the moitor.



- 2 Insert LG Giljabi CD into the CD-ROM drive, and then select the sound driver.
- 3 Sound driver installation starts. complete the processs by the instructions on the screen.

5-3.Reinstalling the video driver

Video driver is came with your computer. But if the computer does not recognize the sound driver, you should re-install the sound driver.

- 1 Turn on the computer and the monitor.



- 2 Insert LG Giljabi CD into the CD-ROM drive, and then select the video driver.
- 3 Video driver installation starts. complete the process by the instructions on the screen.

6. System Expansion



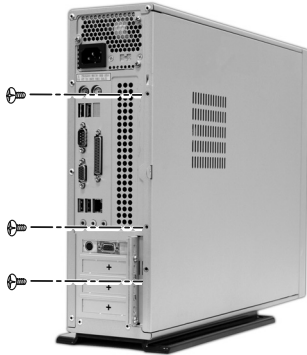
6-1. Opening the computer case

Always consult with your service representatives before opening the computer case.

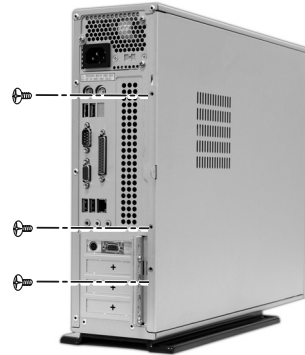
Follow the guidelines below when opening the case.

- Quit all running programs.
- Turn off the computer and monitor, and unplug and remove the power cords.
- Keep magnetic objects such as screw driver away from the parts inside the computer.
- Open the computer case in a safe, clean area.
- The static electricity can damage the parts inside the computer. Touch a bare, unpainted metal part of the computer for 2~3 seconds to remove the static electricity before opening the computer case.

Opening and closing the computer case



Remove 3 screws from the cover and then push the cover as the direction of the arrow.



Push the cover in the direction of arrow as it aligns the groove of computer cover with body shown on the picture and fasten 3 screws.



Warning

- Make sure that there is no metallic object left inside the computer before closing the case. There is a risk of electric shock or fire.