



P/N:3828BPH011A



Rev.00

User's Guide



User's Guide

FGseries



DESKTOP PC



NOTEBOOK PC



TOWER PC

X900



MOUSE



KEY BOARD

X900

FG series

P/N: 3828BPH011A(Rev.00)

Thank you for using the LG product.

LG has manufactured and tested this product to provide you with a reliable computing environment.

Please read this manual carefully before using the computer.




This sign calls attention to features and operations that may be dangerous to the user. Follow the instruction closely to reduce the risk of bodily harm or damage to the equipment

1.Warning: Not following the instruction could result in death or serious injury.

2.Caution: Not following the instruction could result in minor or moderate injury and/or damage to the product.

**This User's guide is for FG model.
Instructions may be different depending on models.
Check your model before reading User's guide.**

Keep User's guide at a place where other users always can reach

- Microsoft, MS, MS-DOS, and Windows are trademarks of Microsoft Corporation.
- IBM, IBM Personal Computer, PS/2 and PC AT are trademarks of International Business Machine Corporation.
-  **LG** is a trademark of LG.
- Copyright 2004 LG Electronics, Inc., DigitalMate Co., Ltd.

- Information in this manual may include technical inaccuracies or typographical errors. Images in this manual are for illustrative purposes only and may be different from the actual product.
- LG reserves the rights to make improvements and/or changes to the product without notice.
- Reproducing any or all of the information contained in this publication without written permission is prohibited.
- This computer complies with the radio frequency and safety standards of any country or region in which it has been approved for wireless use.

Contents



Package Contents	1
Important Safety Instructions	2
1. Installing the system	
1-1 Package contents.....	9
1-2 Components.....	10
1-3 Installing the computer.....	15
1-4 Attaching external devices (customer purchased devices).....	17
2. Using the system	
2-1 Turning on the computer.....	18
2-2 Using Windows XP.....	21
2-3 Turning off the computer.....	28
2-4 Restarting the computer.....	29
2-5 Using Mouse.....	30
2-6 Cleaning the mouse.....	32
2-7 Using keyboard.....	33
2-8 Using the optical disk driver.....	35
2-9 Using hard the disk driver.....	36
2-10 Computer virus.....	39
3. System Setup	
3-1 Starting the system setup.....	44
3-2 Booting with a USB device drive.....	46
3-3 Setting a password.....	47
3-4 Changing or removing the password.....	48
3-5 Recovering the factory default settings.....	50
3-6 Setting up for boot method.....	51
3-7 Using power saving function.....	52
3-8 Using Hyper-Threading function.....	53
4. System Recovery	54
5. Reinstallation of Drivers	
5-1 Reinstalling the printer driver.....	56
5-2 Reinstalling the sound driver.....	60
5-3 Reinstalling the video driver.....	61
6. System Expansion	
6-1 Opening the computer case.....	62
6-2 Main board.....	63
6-3 Connectors.....	64
6-4 Replacing the CPU.....	66
6-5 Increasing memory.....	68
6-6 Adding a hard disk driver.....	72
6-7 Installing expansion cards.....	80
Specifications	82

Important Safety Instructions

These safety instructions will ensure many years of safe enjoyment from the product. Read this safety instructions carefully before installing the computer.

Installing the computer

Warning

Do not operate your computer near water for example, in a bathroom.

The computer may not function correctly, and there is the risk of electric shock. Operate the computer within a temperature range of 41 to 95°F (5°C~35°C) and 30 to 80% of relative humidity.

Safely dispose of the packing materials, such as desiccant and plastic bags.

Children may swallow desiccant or suffocate from plastic bags.

Caution

Keep your computing environment clean and free of dust.

There is a risk of dysfunction to the computer.

Keep away from the moisture condensation.

It may damage on the computer. If this happens, turn off the computer and make it dry before power is on.

Do not place any object within 15cm of the computer.

The computer may overheat and result in fire or injuries.

Keep your computer away from electromagnetic fields.

Exposure to the electromagnetic field may result in loss of data in the hard disk drive and/or damage to the monitor.

Connecting to the power



Warning

Do not use loose or damaged power plugs.

There is a risk of electric shock or fire.

Use a correct voltage outlet.

There is a risk of fire or electric shock.

Use properly grounded outlet.

Connecting the computer to an outlet without proper grounding may result in electric shock and damages to your computer.

Use your computer at the proper voltage/current level indicated.

There is a risk of fire or electric shock.

Do not touch or grab the power plug with wet hands.

There is a risk of fire or electric shock.

If you hear a noise from the power cord or outlet, unplug the power cord immediately, and contact the customer service for help.

There is a risk of fire or electric shock.

Hold the plug body when removing the power cord from an outlet.

There is a risk of fire and damages to the computer.

Make sure the power plug fits snugly into the electrical outlet.

Loose fit may result in fire.

Keep near the power cable and power cord clean.

There is a risk of fire.

If an object or liquid enters the computer or an adaptor, remove power cord, battery, and any other cables from the computer, and contact the customer service for help.

There is a risk of an electric shock, fire, or damage to the computer.

Use properly grounded outlet.

Connecting the computer to an outlet without proper grounding may result in electric shock and damages to your computer.

Use your computer at the proper voltage/current level indicated outlet.

There is a risk of fire or electric shock.

Do not bend or place a heavy object on top of the power cord. Keep the children and pets from damaging the power cord.

Damaged power cord may result in electric shock or fire.

Using the computer



Warning

For cleaning your computer, use mild detergent or computer cleaning products.

Be sure to dry completely before using the computer.

Using the computer without completely drying it may result in electric shock or fire.

During a lightning storm, disconnect the power cord, telephone line, and LAN cable from the computer.

There is a risk of electric shock or fire.

Do not place water, chemicals, or liquid of any kind on the computer.

Liquid of any kind entering inside the computer may result in an electric shock, fire, or damage to the computer.

Do not connect the modem directly to a multi-line telephone.

There is a risk of fire or damage to the computer.

If you drop your computer, remove the power cord and battery pack, and then contact the customer service for check.

There is a risk of electric shock or fire.

Do not expose your computer to the direct sunlight.

The computer may overheat and result in fire or injuries.

Do not place a burning candle or cigarette on the computer.

There is a risk of fire or damage to the computer.

If you see or smell smoke from the computer or adaptor, turn off the computer, remove the power cord, and then contact the customer service for help.

There is a risk of fire.

Upon completion of any service or repairs, ask service technician to perform safety checks.

Ignoring safety checks may result in electric shock or fire.

Keep the computer away from heat.

The computer may deform and there is a risk of fire.

Turn on the external devices first and the system.

There is a risk of damage to the computer.

Turn off the external devices first and the system.

There is a risk of damage to the computer.

Use only the proper devices to the connector.

There is a risk of damage to the computer.

Do not use any damaged CD or floppy disk.

There is a risk of damage to the computer or injuries.

Use the Wireless LAN at least 5 meters away from a microwave oven or plasma lamp. When using the Wireless LAN near a plasma lamp, use the channel 11, 12, or 13.

The connection can be unavailable or slow.

Do not press eject button while the CD-ROM or floppy drive is in use.

Data can be lost and there is a risk of injuries.

Place the memory card in a correct position when inserting it.

There is a risk of damage to the memory.

Do not drop the parts of computer.

There is a risk of injuries or damage to the computer.

Carrying and storing the computer



Before moving the computer, turn the power off and remove all the cables.

You may trip over the loose cables and fall.

Upgrading the computer



Keep screws and other small parts away from children.

Children may choke on a screw or other small part. If a child swallows a small part, receive a medical care.

Do not disassemble the power supply devices.

There is a risk of an electrical shock.

Before disassembling the computer for upgrading purposes, turn off the power and remove the power cord, phone line and battery pack.

There is a risk of electric shock or fire. If you need to open the computer cover, contact the Technical support for help.

Do not attempt to disassemble or modify the computer without consulting Technical support. If you need to open the computer cover, contact the Technical support for help.

There is a risk of an electrical shock.

Always refer to the User's guide.

There is a risk of injury.

Replace only with the parts approved by LG.

There is a risk of fire or damage to the computer.

Consult with the customer service before connecting and using the computer with any non-LG product.

There is a risk of damage to the computer.

Preventing data loss (handling hard disk drives)



Be cautious when handling the hard disk drive.

- The hard disk drive is very delicate to any physical impact. Always make backups for your data.
- LG is not responsible for the data loss caused by users.

The data on the hard disk or the drive itself may be damaged in the following situations.

- Exposure to a physical shock during the disassembling or installing process.
- The computer is reset (rebooted), for example by power outage, while the hard disk drive is operating.
- Exposure to computer virus
- The computer is turned off during operation.

To prevent data loss due to hard disk drive damages, always backup your data.

LG is not responsible for the loss of data.

● Help and Support

- 1 Click [Help and Support] to learn how to solve problems you may encounter while using the computer. Click **[Start]**→**[Help and Support]**.



- 2 The following window appears

You can search for useful Help and Support information.

Click to learn the features and troubleshooting information

You can connect to the Internet and ask for assistance online.

You can setup and configure your computer to personalize your computing environment

1. Installing the system



1-1. Package contents

The following items are included in this package. Match the items below with the items in your package. Some items may look different from the pictures.



Warning

When cleaning your computer, use cleaning products manufactured specifically for computing equipment. Using abrasive chemicals, such as paint thinner, benzene, or alcohol, may damage your computer.



Computer



Keyboard



Mouse



Power cable



User's guide



Trouble-shooting guide



Modem cable



LG Giljabi CD
(Software installation CD)



Recovery CD

1-2. Components

Front view



❶ Power Button

Turns on/off the computer.

❷ Power Lamp and H/D Indication Lamp

Indicates the power and the hard disk state when the computer is turned on. (When the hard disk is running, the lamp will blink. - However, this feature may not function in some systems.)

❸ CD-ROM Drive Button

Inserts or ejects a CD in/from the CD-ROM drive.

(The cover is opened and closed automatically if the user presses this button.)

❹ CD-ROM Drive

Operates a large-capacity data CD or video/audio CD as one of auxiliary memory devices. (Depending on product model, CD-RW and DVD-ROM drives may be equipped.)

❺ Input/Output Port Cover

The user can open the cover by pulling the cover as shown in the figure.

⑥ USB (USB 20 Port) Connector

Connects USB devices or hubs (including a USB mouse or digital camera).

⑦ IEEE1394 Connector

Connects IEEE 1394-4 4-pin devices (including a camcorder).

⑧ Audio connector

Headphone connector

A port for external earphones.

Microphone Connector

A port for external microphone.

⑨ Multimedia Card Slot

Hosts various portable memory cards - CF, MD, MS, MS-PRO, SD, MMC, SMC and others.

⑩ Support


The support of for stable installation of the main body of the computer.



Caution



Each slot is marked with a symbol indicating proper card types that can be accommodated. Check the symbol and insert a right type of memory card in the direction as shown in the figure.

Do not delete **[Safely Remove Hardware]** () icon. Otherwise, the computer needs rebooting to use the memory card slot.

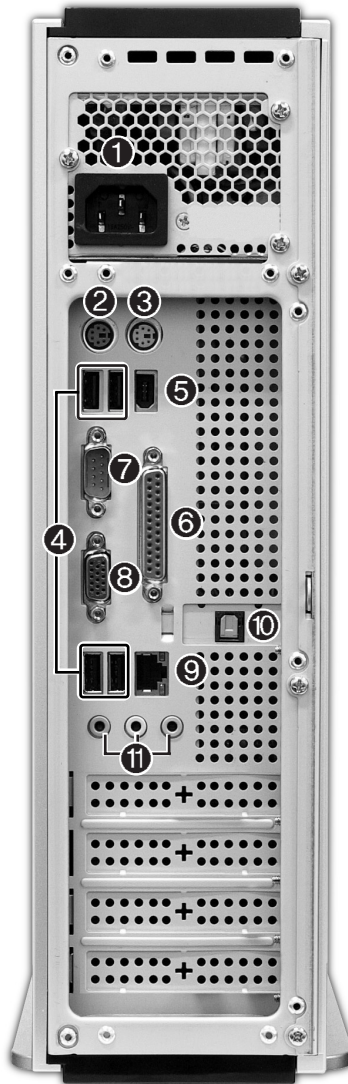
- Remove the support to use your computer laid down.
- To use the computer with the body standing, install the support. Otherwise, the system may function unstably.

Note

- 6~9 are the options parts differ by product model. For more information about optional parts, see **Option Guide of Giljabi CD**.



Rear view



Note

- Your computer may have different features and configuration from the computers shown above.
- Power specifications may be different depending on the country or region, check the power specifications before use.

① Power connector

Connects electrical power to the computer.

② Keyboard connector

Connects PS/2 connector.

③ Mouse connector

Connects PS/2 mouse.

④ USB(USB 2.0 port) connector

Connects to USB devices or HUB(USB mouse or digital camera can be connected).

⑤ IEEE1394 connector

Connects to IEEE1394 6pin connector.

⑥ Parallel connector

Connects to parallel devices such as printer or scanner.

⑦ Serial connector

Connects to serial devices.

⑧ Video connector

Connects to a monitor.

⑨ LAN

Enables 10/100Mps network connection when connected as UTP with HUB.

⑩ Digital audio output connector(S/PDIF)

Connects to digital audio devices.

⑪ Audio connector

External speaker connector

Connects to external speaker connector.

Line connector

Connects to external audio connector.

Micro phone connector

Connects to external micro phone connector.



Warning

Do not disassemble power supplies.
There is a risk of electrical shock.

Note

- Modem cable is offered for models that support modem card.

1-3. Installing the computer

Installing your computer may be easier than you think. Before the installation, be sure to turn off the computer and other peripheral devices. The mouse and keyboard connectors look identical therefore, check the icons above the connectors before attaching the mouse and keyboard. Your computer may be installed with different expansion cards from the picture below. Some items may look different from the picture.



Warning

- Do not place a glass or container with water, chemicals, or liquid of any kind in it on the computer.
- There is the risk of electric shock and/or damage to the computer.

1 Connecting a keyboard

The keyboard cable has a round connector with 6 pins.



Align the pins and holes, and attach the keyboard cable to the computer as shown in the picture.

2 Connecting a mouse

The mouse cable has a round connector with 6 pins.



The round connector on the mouse cable fits into the PS/2 connector on the rear of the computer. Be sure to align the 6 pins on the cable with the corresponding holes on the connector.

Note

- For USB mouse users, USB connectors are located both the front and rear of the computer.

4 Keyboard stand

The keyboard stand is located at the bottom of the keyboard.



Lift the stand to use the keyboard more comfortably.

3 Connecting to power

Power supply is 110V/220V (selection) or 220V only.



Attach the power cord to the computer and then plug the power cord into a wall socket.



Warning

- Power supply is 110V/220V (selection) or 220V only.
- Check the location of the switching button when 110V/220V (selection) is used.



- Operate the product at the proper voltage when selecting 110V or 220V power supply. Incorrect use of power supply may damage on the product or fire.

1-4. Attaching external devices(customer purchased devices)



Warning

- Do not connect too many cables to one extension cord. An electric shock may occur.
- Do not leave the power cord below the body.
- Do not touch the outlet when connecting or disconnecting the power cord. An electric shock may occur.

Connecting a monitor (customer purchased devices)

The monitor cable and power cord are included with the monitor.

For more details, refer to the User's manual that comes with the monitor.



Using a built-in video card



Using a video card you have installed

- ❶ Connect the monitor cable to the video card. The monitor cable sends signals from the computer to the monitor.
- ❷ Connect the power cord to the monitor and plug it into power outlet. The power cord supplies power from the electrical outlet to the monitor. You must turn on and off the monitor with the power button on the monitor. Check the power specification of the monitor before connecting the power cord to the computer.

Connecting a printer (Customer purchased devices)

The printer cable and power cord are included with the printer.

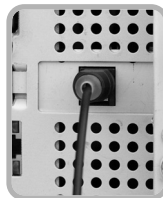
For using the printer, refer to the user manual that comes with the printer.



- ❸ Connect the printer cable to the parallel connector on the computer.
- ❹ Connect the other side of the cable to the printer.
- ❺ Connect the power cable to the printer
- ❻ Plug the power cord into an electrical outlet

Optical line-out: S/PDIF (Customer purchased devices)

You can listen to the digital sound from an optical speakers by using S/PDIF function.



- ❼ Connect an optical cable to the speakers to use S/PDIF function.

Connecting a speaker (Customer purchased devices)

Speakers are not included in this package.

You must connect an external speaker to output sound.



- ❽ Connect a speaker cable to the speaker connector on the rear of the computer.

2. Using the system



2-1. Turning on the computer

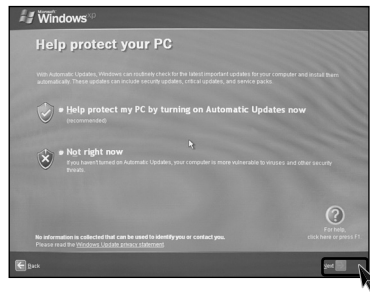
Make sure if there is nothing in Floppy disk and see if the computer is well connected to the power cable and other external device drivers. You should complete registration process. Start registration process following the instruction after turning on the computer.

● Registration process

- 1 Pressing the power switch starts the self-diagnostic procedures; then Windows(R) XP startup screen is displayed .In a moment, a dialogue box, saying **"Welcome to Microsoft Windows"** appears on the screen. Then Click **[Next]**.



- 2 After **"Help protect your PC"** message appears on the screen, select **"Help protect my PC by turning on Automatic Updates now"** and then press **[Next]**.



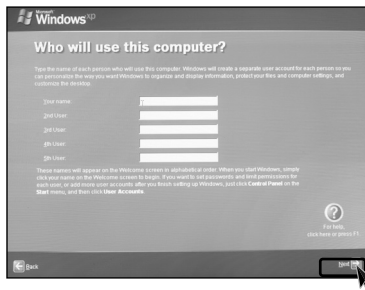
3 Internet connection option screen appears, follow the instruction.



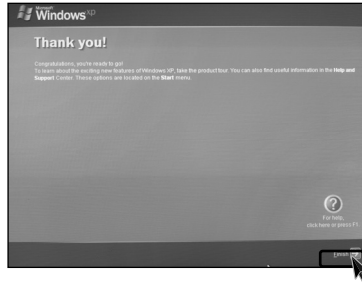
4 If you turn the power on the computer for the first time, you have to register your copy of Windows XP. The registration process may differ depending on the model, but the difference does not affect the use of your computer.



5 "Who will use this computer?" message appears on the screen. Type the names of the users and click **[Next]**.



- 6 "Thank you!" message appears on the screen.
Click **[Finish]** to complete the registration process.



Caution

Windows Certificate

Windows Certificate includes the product number which proves your Windows Operating System is original product.

Please always keep this certificate with you.

The Windows Certificate you have may look different from the picture.

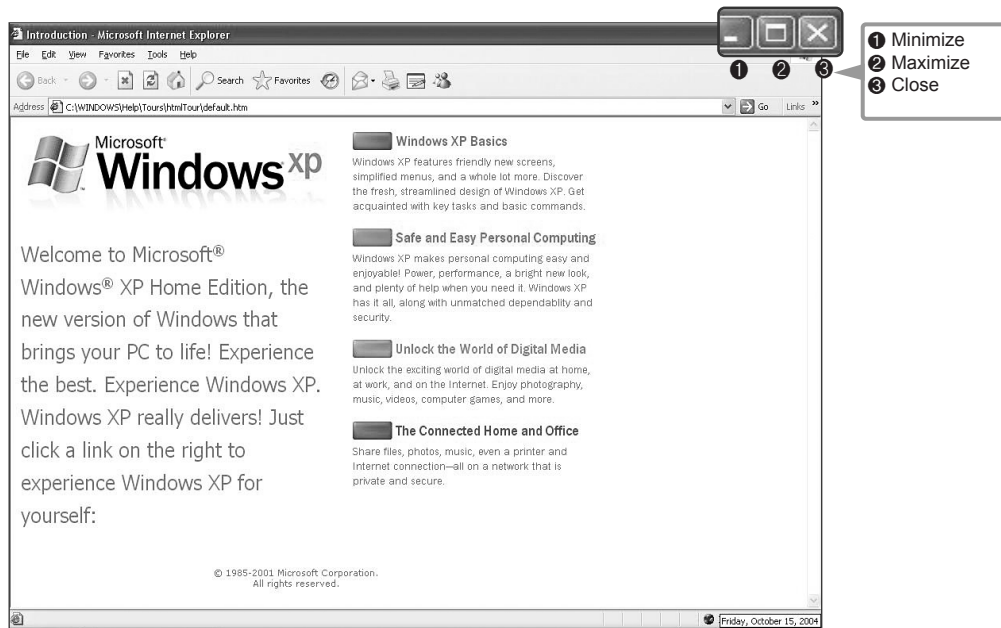


2-2. Using Windows XP

Windows XP is new, brilliant and easy-to-use. Background and title bar have been rearranged concisely, and it became easier to access the application programs from the start menu. Also, it allows users with more diverse options to choose from when decorating desktop's appearance.

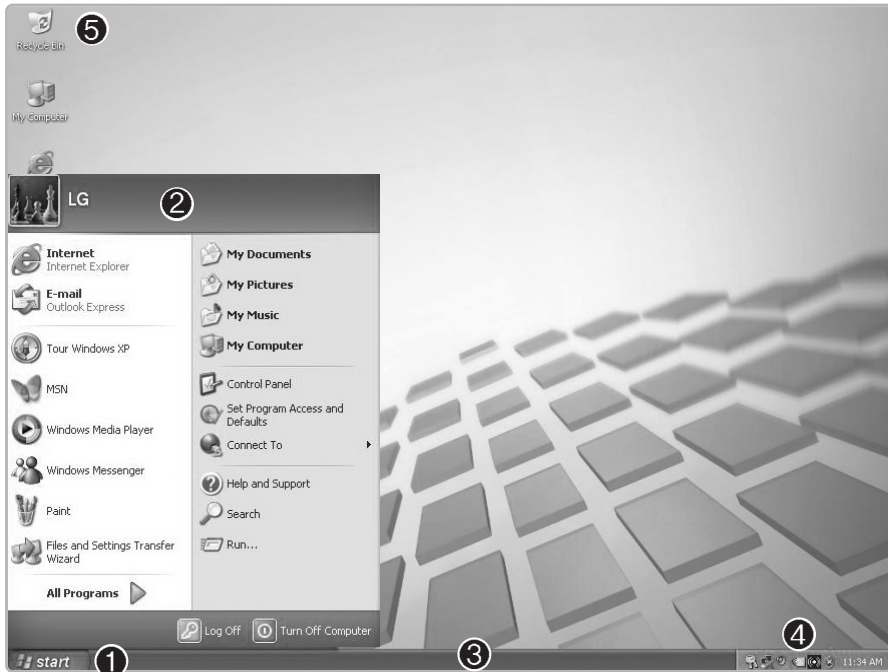
Overview

Windows XP is an operating system that runs a computer. Learning the basics features in Windows is recommended to utilize a computer effectively.



Click **[Start]**—**[Tour Windows XP]** to explore the features and tools available in Windows XP.

● Windows XP desktop



<p>1 [Start] button</p>	<p>Click [Start] button to open the [Start] menu. Click [All Programs] to open the list of programs installed in the computer.</p>
<p>2 [Start] menu</p>	<p>[Start menu] shows everything you need to start working in the Windows XP environment.</p>
<p>3 Taskbar</p>	<p>Taskbar shows programs that are currently open and running.</p>
<p>4 Taskbar icons and clock</p>	<p>Taskbar icons show and let you configure ongoing activities such as battery power status, display properties, LAN settings, etc</p>
<p>5 Recycle Bin</p>	<p>Put your unused items and files in the Recycle Bin. Right-click the Recycle Bin and select [Empty Recycle Bin] to permanently delete the items inside the Recycle Bin</p>

Start menu



Clicking **[Start]** button enables you to easily access computer programs.

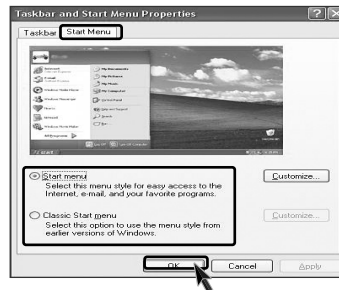
- ① Pinned items
- ② Recently used items
- ③ All Programs
- ④ Control Panel lets you change the settings in your compute
- ⑤ My computer shows the drive and network information for your computer

Changing the look of the Start menu

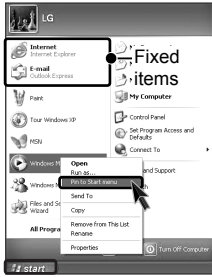
- 1 Right click **[Start]** button and select **[Properties]**. Choose from either Start menu or Classic Start menu.



- 2 If you want default start menu, click **[Start menu]** from Taskbar **[Start Menu Properties]**.
- 3 Click **[Classic Start menu]** if you want to use the menu style from earlier versions of Window.
- 4 Click **[OK]**. New start menu style appears on the desktop.

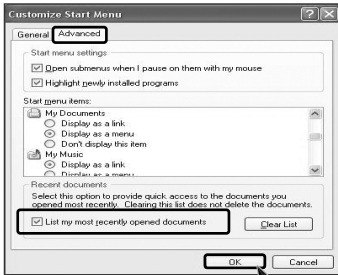


Changing the pinned items in the Start menu



- 1 Right-click the item you want to pin it to the Start menu.
- 2 Select **[Pin To Start Menu]**.
- 3 The item is pinned at the top of the Start menu.

Showing the recently used items on the Start menu



- 1 Right-click on **[Start]** button and click **[Properties]**.
- 2 In **[Start Menu]** tab, select **[Start menu]** and click **[Customize]**.
In **[Advanced]** tab, check **[List my most recently opened documents]** and click **[OK]**.
- 3 In Taskbar and Start Menu Properties window, click **[Apply]**-**[OK]**.

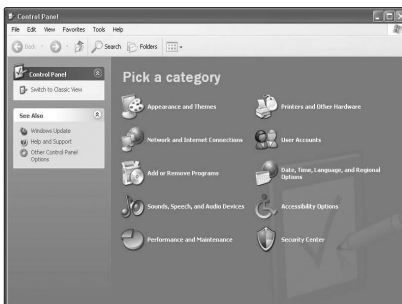
If you click **[Start]** button the next time, recently used items appear on the Start Menu.

Note

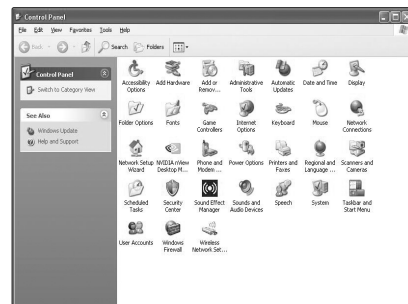
- To delete recently opened documents, select **[Clear list]** from **[Advanced]** tab. The files are not deleted in the system even if the lists are cleared.

Control Panel

[Switch to Category View] is added to the Control panel to gather similar items in group. Classic view shows each item in window. You can choose either Classic or Category view.



Category View



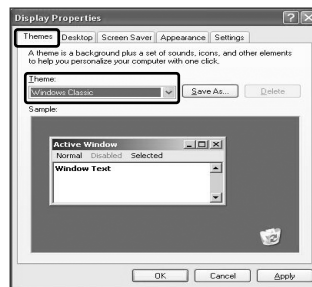
Classic View

● Changing the Themes and Desktop background

You can customize the appearance of desktop by using Theme option such as desktop background, screen saver, icon, window, mouse pointer or sound. For more than one user, each user can use different theme.

Using the Windows Classic Theme

- 1 Click **[Start]**→**[Control Panel]**→**[Switch to Classic View]**→**[Display]**.
- 2 Click **[Themes]** tab.
- 3 Select **[Windows Classic]** from the **[Theme]** drop down menu.



Using a different theme

- 1 Click **[Start]**→**[Control Panel]**→**[Switch to Classic View]**→**[Display]**.
- 2 Click **[Themes]** tab.
- 3 Select another theme from the **[Theme]** drop down menu.



Note

- To view display properties, click **[Start]** → **[Control Panel]** → **[Switch to Classic View]** and double-click Display.
After selecting Windows Classic, you can customize Windows elements such as window borders, icons, and menus.
Select Appearance tab, and click Advanced.

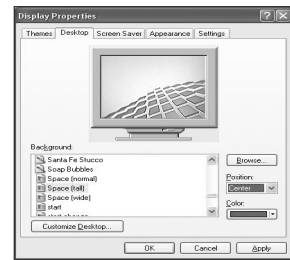
Changing the desktop background

- 1 Click **[Start]**→**[Control Panel]**→**[Switch to Classic View]**→**[Display]**.

Click **[Desktop]** tab. (Or you can right click on the mouse while in desktop background. When a short cut menu pops up, choose **[Properties]**).



- 2 Scroll down the **[Background]** drop down menu and select an image for the background. You can also click **[Browse]** button and select an image you have saved.



Setting the Screen Saver

- 1 Click **[Start]**→**[Control Panel]**→**[Switch to Classic View]**→**[Display]**. Click **[Screen Saver]** tab.



- 2 Select your choice from **[Screen savers]**.
Choose stand by time by using scroll bar. To protect important data from other users, select **[On resume, pass word protect]**, it will ask users a password from the screen save mode.

