

To personalize your desktop themes.

- 1 Click **[Control panel]**→**[Switch to classic view]**→**[Display]**
- 2 Select theme from the theme drop down menu.
- 3 Theme changes.
- 4 After making a selection, click **[Apply]** and then click **[Save as]**.
- 5 Enter a theme name and press **[OK]**.

Note

- To open Display Properties, click **[Start]** →**[Control panels]**→**[Switch to classic view]** and then double-click **[Display]**.

If you do not save the theme, the name of the theme does not change.

The new theme is saved in My documents folder. To open My document folder, click **[Start]** and select **[My documents]**.

Taskbar

Taskbar displays programs and files that are currently open. If there are many programs running on the computer, the Taskbar group together files from the same program to prevent taskbar icons from cluttering up the Taskbar.



Desktop cleanup

With Desktop Cleanup Wizard, you can delete hot icon paths that are not used on the desktop. Desktop Cleanup Wizard will be automatically executed every 60 days, or you can run this program when necessary.

To delete unused icons on the desktop, do the following

- 1 Open **[Control Panel]** → **[Switch to Classic View]** → **[Display]**.
- 2 Click **[Customize Desktop]** under Background tab.
- 3 Click **[Clean Desktop Now]** under Desktop Cleanup tab.
- 4 Follow instructions of **[Desktop Cleanup Wizard]**.

2-3. Turning off the computer

If the Drive in use indicator is on, do not turn off the computer, as doing so may damage the data being read from or written to the drive.

- 1 Quit all running applications; click **[Start]** and choose **[Turn off computer]** from the start up menu.



- 2 In the Turn off computer window, choose Turn off.



- 3 The computer is turned off automatically.



Warning

- You may not be able to normally turn off the computer in Windows. When this happens, press the Power button for five seconds.

However, this is an emergency measure and taking this measure may result in errors in the system. It is recommended to click the **[Start]** button and select Turn off Computer menu on Windows desktop to shut down the computer.

Abnormal turning-off of the computer may damage data stored in the hard disk.

- When the program suddenly stops, click **[Ctrl] + [Alt] + [Delete]** keys and terminate the program through Windows Task Manager or restart the system. If the some program files of Windows has been damaged due to abnormal turning-off of the computer, reinstall damaged programs. LG Electronics is not responsible for data loss caused by your mistakes and negligence.

2-4. Restarting the computer

You can restart the computer as the instructions below, when the computer does not function correctly or freeze out.



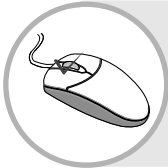
- ❶ Quit the program or restart by pressing combination of **[Ctrl]+[Alt]+[Delete]** key.
- ❷ In case the measure described above does not work, press the Power button for 5 seconds to turn off the computer. Then, restart the computer after 10 seconds.

Note

- Keyboard and mouse may look different from the picture.

2-5. Using Mouse

This chapter explains how to use mouse pointing device. You may have a different features on your model. FG model supports an optical mouse with USB connection.



What is click?

To press down and release a left button on a mouse pointing device in order to select an item on a display screen or activate a command or function.



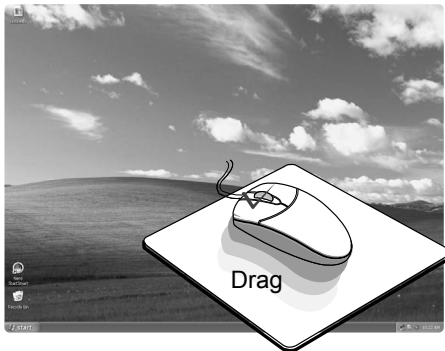
What is double click?

Pressing the left button twice in rapid succession in order to activate a command or function represented graphically on a display screen.



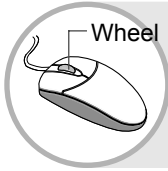
What is Pop-up menu?

When using Windows, clicking the right button on the mouse opens the pop-up menu. (Pop-up menu is to command a copy, send or open/close functions to support an application program.)



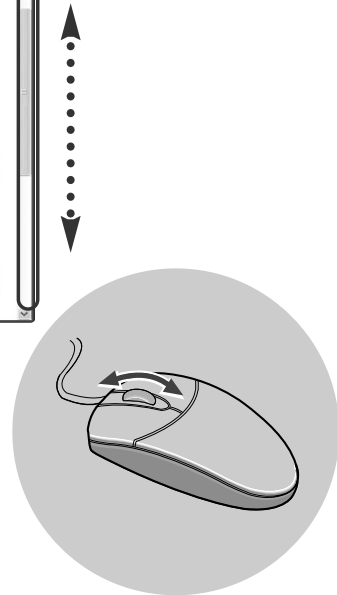
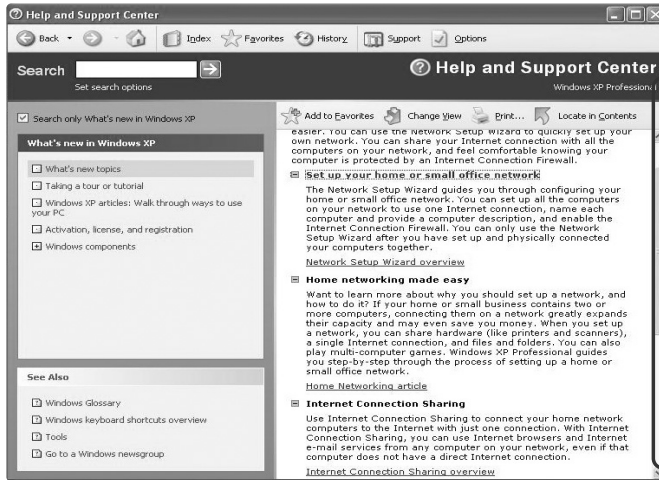
What is drag?

To move a pointing device while pressing down on one of its buttons.



Using wheel?

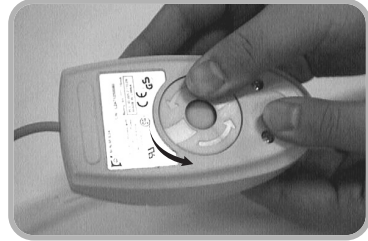
To cause (displayed text or graphics) to move up, down, or across the screen so that a line of text or graphics appears at one edge of the screen for each line that moves off the opposite edge.



2-6.Cleaning the mouse

If the mouse pointer does not move well, you need to clean up the ball inside the mouse. (The appearance of mouse may be different depending on models). Clean up the mouse with cotton swab and alcohol as follows.

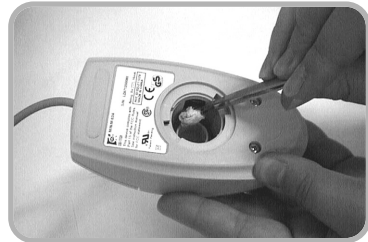
- 1 Open up the cover in the direction of the arrow as shown on the picture and take out the ball.



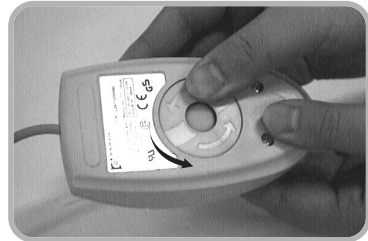
- 2 See if inside of the mouse is filled with dust.



- 3 Clean with cotton swab and alcohol.



- 4 Close the cover in the direction of the arrow and use the mouse.



2-7. Using Keyboard

Keyboard is used for entering text and commands in the computer.



1 ESC key

Used to command quit or cancel while application program is running.

2 Function keys

Enable you to perform different operations depending on the operating system and application program you use.



F1

In many cases, it starts help menu from most application programs.

3 Typewriter key pad

(refer to the User's guide p34)

4 Modifier and special function keys



Print Screen

Press PrtSc key to take the snapshot image on the screen.



Scroll Lock

To move an entire image on the screen without moving a cursor.



Pause/Break

To stop movements for a specified time.

5 Direction keypad / Numeric keypad

Direction keys mark the position at which a cursor can be moved. Numeric keys can be used as direction keys when NumLock indicator is on.



Home

Home moves the cursor at the beginning of the sentence.



End

End moves the cursor at the end of the sentence.



Page Up

Page Up moves the cursor to the previous page.



Page Down

Page Down moves the cursor to the next page.

6 Multimedia/Internet function keys



Home

Launches the Internet Explorer on your system.



Search

Internet Explorer or Windows Explorer must be launched to use this key to access to the search engine in the Internet Explorer or search files in the Windows Explorer.



E-mail

Launches the Outlook Express on your system.

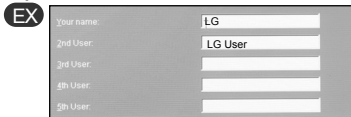
● Typewriter Keypad

The keyboard is used for entering text and command.



1 Tab key

Used to input data in the data input window and to move to the next data input window.



Inputting a name

Inputting initials of the name

2 Caps Lock key

Lock the keyboard in the upper case position.

3 Shift key

Hold Shift key down and press another key to enter the upper case letter.

4,8 Crlt key or Alt key

Keys (shortcuts) are used in conjunction with Arlt key or Ctrl key to provide shortcuts for some of the predefined operations.



Caution

Spilling the water on the keyboard causes disfunction to the computer.

5 Backspace key

Moves a cursor to backward when deleting letters.

6 Enter key

Used at the end of each command to move on to the next line.

7 Space key

Make a blank or empty area: the spaces between words.

9 Windows key

Opnes up the start menu when using Windows operating system.

10 This key is used to view shortcuts for the current program (Shortcut menu key works the same as the right-clicking the mouse button)

11, 12 This key is used in conjunction with [Fn] key to move on to the next or previous page.

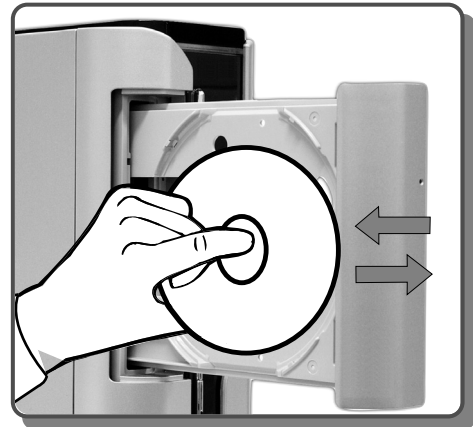
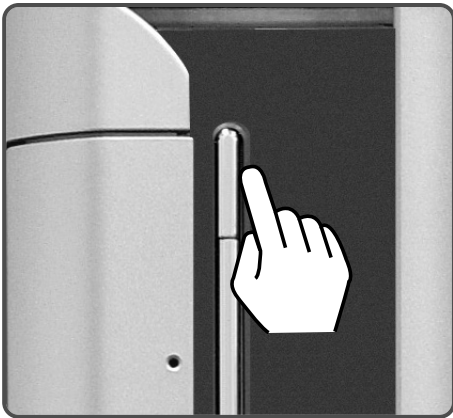
2-8. Using the optical disk drive

Different model types provide different optical disk drives. (Some models have DVD-ROM drives and others have DVD/CD-RW COMBO/DVD±ROM COMBO drives)

● Inserting a CD

Turn on the computer, and press the eject button on the CD-ROM drive.

Put the CD with its labeled side up, and insert the CD in CD-ROM tray without touching the playing part.
(※The trademark must face upward.)

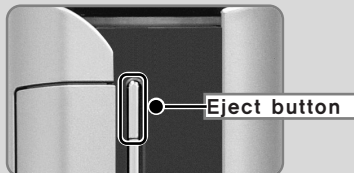


Note

Eject button : eject CD out of the computer.
Gently push the button only once.

■ After install CD on the tray, push the CD tray in the direction shown on the picture, or press the Eject button once.

※ This model adopted slim design for efficient use of space and the CD-ROM (RW/DVD/COMBO) drive is vertically installed. Therefore, a small-sized CD titles (80mm) may not be properly inserted. If necessary, lay down the product to insert such small-sized CD titles.

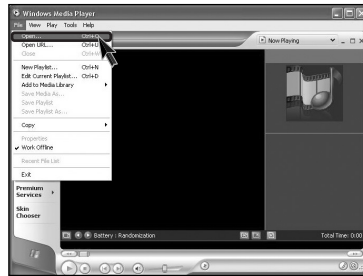


● Using Windows Media Player

You can use Windows(R) Media Player to play various types of audio and video files. You can play and make a copy of an audio CD, listen to the Internet radio broadcast, play movie clips, and listen to music or watch a video on a web site. If you have a DVD drive, you can play a DVD. If you have a CD-RW drive, you can use Windows Media Player to make your own music CD.

1 [Press Start] → [All Programs] → [Accessories] → [Entertainment] → [Windows Media Player].

2 When Windows Media Player opens, press Open under File menu, and then select an audio or video file you want to play.

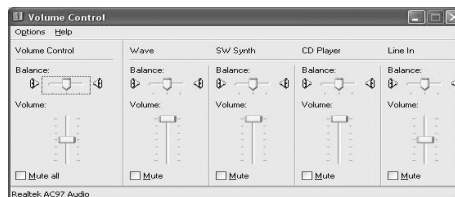


Adjusting volume

1 Click [Volume Control] icon from the taskbar.



2 Drag the mouse to move the slide bar to adjust the volume.



2-9.Using disk drive

● Using hard disk drive

Hard disk drive is a storage device in the computer. Refer to the System setup for setting up the computer system.

Damages to the computer data

Always make backup files for your important information. LG is not responsible for data loss caused by users.

Installing the computer

- Turn off the computer when disassembling the computer and see if the computer and the power cable is correctly connected. Incorrect connection to the power cause the damages to the computer.
- Do not use any other screws that are not approved.
- Set the computer on a flat surface.

Computing environment

- Do not give excessive pressure on the computer.
- Do not place your computer to temperatures above (140 degrees F) (60 degrees C).
- Keep your computer away from electronic equipments that create strong radio waves.
- During a lightning storm, remove the power cord, telephone line, and LAN cable from the computer.

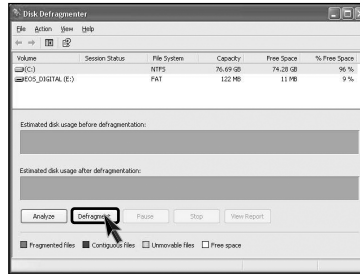
The data on your hard disk itself may be damaged in the following situations

- Do not give excessive pressure on the computer.
- When the computer is reset (rebooted), for example by power outage, while the hard disk drive is operating.
- A computer virus is detected on your computer.
- Incorrect input of (BIOS) setup.
- When the necessary files are deleted or damaged.
- Turning off the computer when the system is operating.

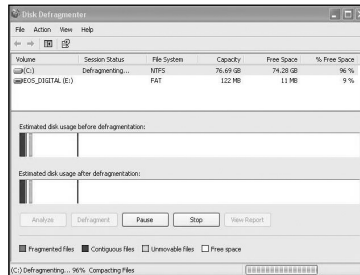
● Disk cleanup

Gathers all the bad sectors on the disk. Quit all application programs before running Disk cleanup.

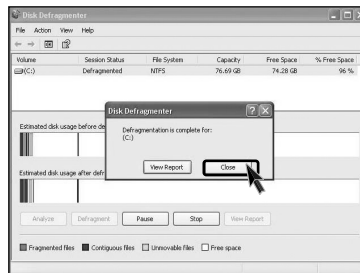
- 1 From the [Start] button, [Accessories]→[System tools]→[Disk cleanup].
- 2 If the following dialogue box appears, select a drive you want to cleanup and then click [Cleanup].



- 3 Following images appears.



- 4 Click [Press] after the Disk cleanup process is complete.

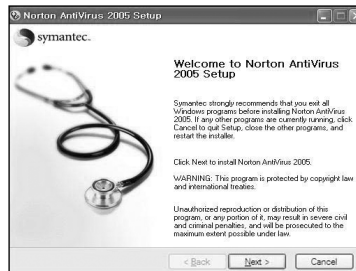


2-10.Computer virus

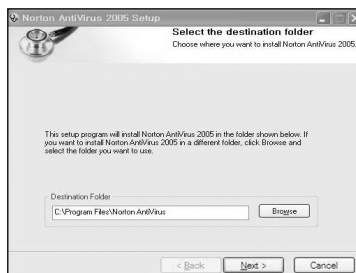
A small program that alters or destroys information stored in the computer.Norton AntiVirus is offered to detect computer virus. For one year after installing windows OS Norton AntiVirus is available to use.

● Installing Norton Antivirus

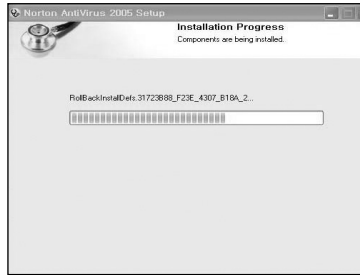
- 1 Click the Norton Antivirus icon on the desktop.
- 2 Following windows appears. Click **[Next]**.



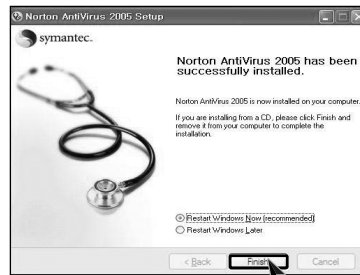
- 3 Click **[Next]** to install Norton Antivirus.



4 Following window appears.



5 "Norton Antivirus installation is complete" message appears. Click **[Finish]**.



● Norton Antivirus update

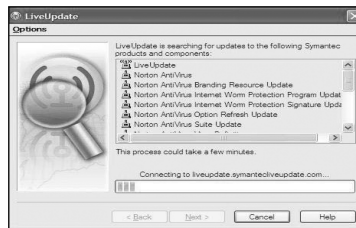
You should have an internet access to process Norton Antivirus update.

1 Click **[Start]** and **[All programs]→[Norton Antivirus]→[LiveUpdate]→[Norton AntiVirus]**.

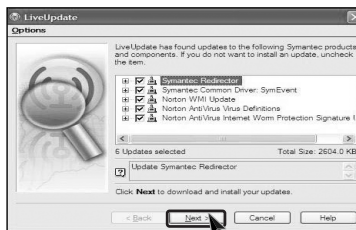
2 Click **[Next]**.



3 Following window appears.



4 Click **[Next]**.



5 Downloading update-items online.



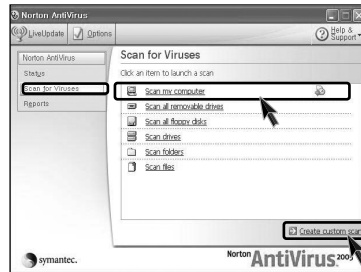
6 Click [Finish] . Norton Antivirus Update is complete.



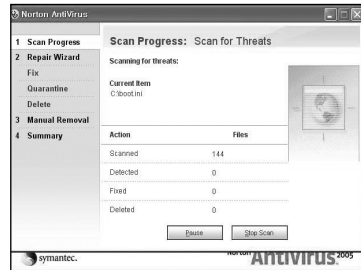
● Running Norton Antivirus

1 Click **[Start]**→**[All programs]**→**[Norton Antivirus]**→**[Norton AntiVirus2004]**.

2 Click **[Scan for virus]** and select an item to scan.



3 Norton AntiVirus is scanning virus.

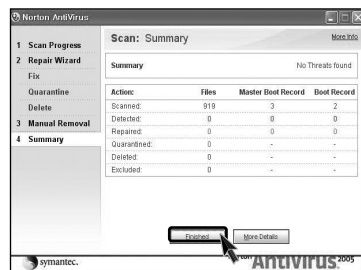


Note

- If any virus is detected, click **[Fix]** to repair.



4 Click **[Finish]**. Virus scanning is complete.



3. System setup



The system setup saves your computer's hardware configurations in CMOS RAM. The system setup provides you with information, such as the size and type of your hard disk, size of the installed memory, date, and time.

3-1. Starting the system setup

You may want to use the CMOS Setup Utility in the following situations:

- Booting with a USB device drive(Page 46).
- Setting a password(Page 47).
- Changing or removing the password(Page 48).
- Recovering the factory default settings(Page 50).
- Setting up for boot method(Page 51).



Caution

Do not change the system setup arbitrarily. Incorrect system setup may result in errors while using the computer.

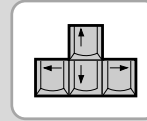
The menu and default factory settings of the CMOS Setup Utility may look different from this manual. They may have been changed to improve the performance of the system.

● Keys used in the CMOS Setup Utility

Keys	Funtion
[Enter]	Select the current item.
[Esc]	Close the current window or move to the previous window.
[↑],[↓],[←],[→]	Move up, down, left, and right.
+/-	Increase or decrease the value
[Page Up]	Increase or decrease the value.
[Page Down]	Increase or decrease the value.
[F10]	Save or exit the system setup.

Note

- Direction keys (arrow keys) move the cursor up, down, to the left and right. If Num Lock button is off, the arrow keys in the numeric keypad can be used just like the cursor control keys.



<Cursor keypad>

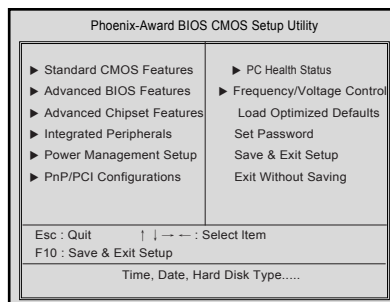


<Numeric keypad>

- 1 Turn on the computer and monitor.
- 2 When LG logo appears on the screen, press **[Delete]**.



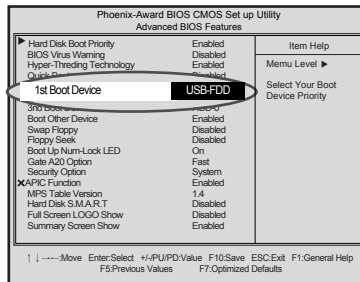
- 3 The CMOS Setup Utility window appears.



3-2. Booting with a USB device drive

Follow the instruction below to set the USB disk as start up disk.

- 1 Open the **CMOS Setup Utility**. Use the arrow keys to select **Advanced BIOS Features** and press **[Enter]**.
- 2 Use the arrow keys to select **1st Boot Device**, and Use **Page Up** and **Page Down** key to **USB-FDD**.



- 3 To save changes in System Setup, press the **[F10]** key.

- 4 When the following message appears, press **[Enter]**. The computer restarts.

SAVE to CMOS and EXIT(Y/N)? Y

3-3. Setting a password

If you want to protect the system setup from unauthorized users, follow the instruction below to set a password.

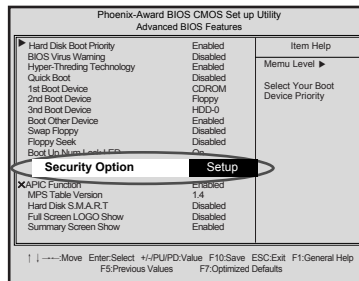
You can set a password in the CMOS Setup Utility program.



Caution

If you forget the password, you cannot gain access to your system. Be sure to write down the password in a safe place only you can refer to in case you forget the password.

- 1 Start the CMOS Setup Utility. Use the arrow keys to select **Advanced BIOS Features**, and then press **[Enter]**.
- 2 Use the arrow keys to select **Security Option**. Use the **Page Up** and **Page Down** keys to select **Setup** or **System**, and then press **[Esc]**.



Note

- If you select Setup in the Security Option, the computer asks for a password next time you try to enter the CMOS Setup Utility. If you select System, the computer asks for a password next time you start the computer and also when you try to enter the CMOS Setup Utility. Setting the System password prevents unauthorized users from using the computer or changing the system setup.

- 3 Use the arrow keys to select **Set Password**, and then press **[Enter]**.

- 4 If the following message appears, enter the new password and then press **[Enter]**. A password must consist of characters A~Z and numbers 0~9, and has the maximum length of 8.

Enter Password :

- 5 If the following message appears, enter the password again, and then press **[Enter]**.

Confirm Password :

- 6 To save changes in System Setup, press the **[F10]** key.

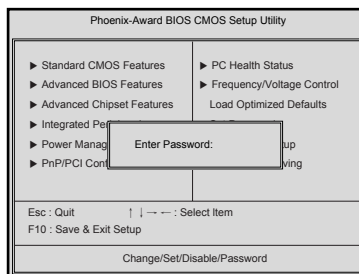
- 7 If the following message appears, press Enter. The computer restarts.

SAVE to CMOS and EXIT(Y/N)? Y

3-4. Changing or removing the password

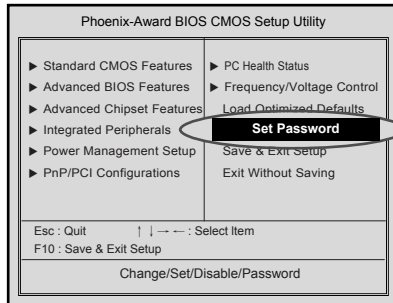
You must know the password to change or remove it.

- 1 Start the CMOS Setup Utility, enter your password, and then press **[Enter]**.

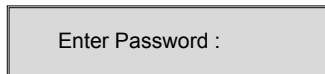


- To change the password, follow the instructions on Setting a password.
- To remove the password, follow the instructions below.

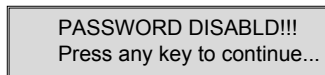
2 Use arrow keys to select **Set Password**, and then press **[Enter]**.



3 If the following message appears, press **[Enter]**.

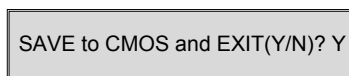


4 If the following message appears, press **[Enter]**.



5 To save changes in System Setup, press the **[F10]** key.

6 If the following message appears, press **[Y]** key and **[Enter]**. The computer restarts.



3-5. Recovering the factory default settings

You can follow the instructions below to recover the factory default settings.

1 Start the CMOS Setup Utility. Use the arrow keys to select **Load Optimized Defaults** and press **[Enter]**.

2 If the following message appears, press Y key and then Enter. The factory default settings have been recovered.

Load Optimized Defaults (Y/N) ? Y

3 To save changes in System Setup, press the **[F10]** key.

4 If the following message appears, press **[Enter]**. The computer restarts.

SAVE to CMOS and EXIT(Y/N)? Y

3-6. Setting up for boot method

This boot method does not effect the CMOS setup when start the system.

- 1 Turn on the computer and the monitor.
- 2 Press **[F8]** key while the LG logo appears.



- 3 Select **USB-FDD** from the **Boot menu**, the computer restarts.

Note

- USB-ZIP, USB-HDD, or USB CD-ROM may appears on the Boot menu depending on the specifications.

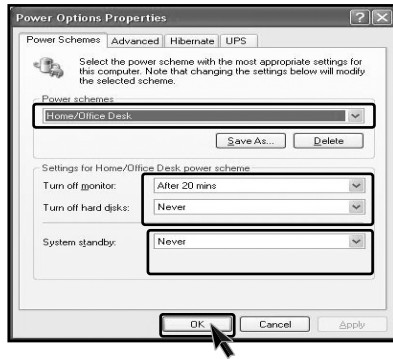
3-7. Using Power saving function

You can use power saving function in Windows OS no matter how you set the BIOS setup.

1 Click [Start]→[Control panel]→[Switch to classic view].

2 Double click Power option icon from the control panel.

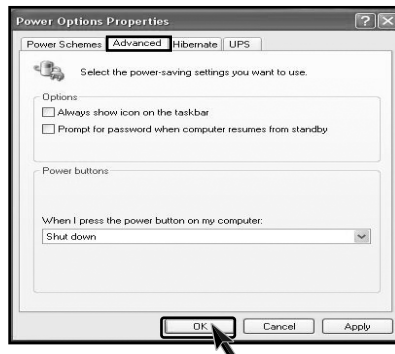
3 Set the Power option properties and click [OK].



Warning

There are some devices which do not support the power saving function properly. If you have installed such devices, you should disable power saving function.

4 Click [Advanced] for setup if necessary and then click [OK].



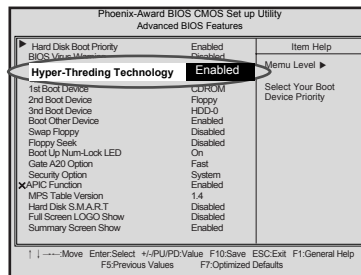
Note

■ **Hibernation mode:** It saves data and turns off the power and then restores data until the system starts again.

3-8. Using Hyper-Threading function

It improves the efficiency of the CPU as if one more CPU is working for the system. It is more effective when playing games or multi-media work such as graphic works. This function can be run by the CPU which supports HT (Hyper-Threading). Check the Intel label with HT on it.

- 1 Turn on the computer and monitor.
- 2 Press **[F8]** key while the LG logo appears on the screen.
- 3 If the following screen appears, select **[Hyper-Threading Technology]** and then select **[Enabled]**.



Note

- Hyper-Threading is only available for Windows XP. If an error occurs in other softwares or games, set it Disable.

- 4 To save changes in System Setup, press the **[F10]** key.
- 5 Press **[Enter]** if the following message appears on the screen. The computer restarts.

SAVE to CMOS and EXIT(Y/N)? Y

4. System Recovery



The system setup saves your computer's hardware configurations in CMOS RAM. The system setup provides you with information, such as the size and type of your hard disk, size of the installed memory, date, and time.

● Restoring the system by using Recovery CD

You can restore your computer system by using Recovery CD, shipped with your Computer

You can select two options (Full Recovery without Format / Full Recovery after Format)

For Windows users

- 1 Please make backup files from your Computer.
- 2 Insert the Restore CD in the CD-ROM drive. When "**Press any key to boot from CD...**" message appears on the screen, press the **[Enter]** key.
- 3 Follow the instructions to install the Widows operating system.
- 4 After the installation is complete, remove the Recovery CD from your computer and then restart the computer. Start the registration procedure by following instructions on the screen.



- 5 After the Windows operating system installation is complete, install the LG GILJABI CD (software installation CD) on your computer, and then you can use all application programs and device drivers.