



P/N:3828BPH016A



Rev.00

User's Guide



User's Guide

NK series



DESKTOP PC



NOTEBOOK PC



TOWER PC

X270



MOUSE



KEY BOARD

X270

NK series

P/N: 3828BPH016A(Rev.00)

Thank you for using the LG product.

LG has manufactured and tested this product to provide you with a reliable computing environment.

Please read this manual carefully before using the computer.




This sign calls attention to features and operations that may be dangerous to the user. Follow the instruction closely to reduce the risk of bodily harm or damage to the equipment

1.Warning: Not following the instruction could result in death or serious injury.

2.Caution: Not following the instruction could result in minor or moderate injury and/or damage to the product.

**This User's guide is for CK model.
Instructions may be different depending on models.
Check your model before reading User's guide.**

Keep User's guide at a place where other users always can reach

-
- Microsoft, MS, MS-DOS, and Windows are trademarks of Microsoft Corporation.
 - IBM, IBM Personal Computer, PS/2 and PC AT are trademarks of International Business Machine Corporation.
 -  **LG** is a trademark of LG.
 - Copyright 2005 LG Electronics, Inc., DigitalMate Co., Ltd.

- Information in this manual may include technical inaccuracies or typographical errors. Images in this manual are for illustrative purposes only and may be different from the actual product.
- LG reserves the rights to make improvements and/or changes to the product without notice.
- Reproducing any or all of the information contained in this publication without written permission is prohibited.
- This computer complies with the radio frequency and safety standards of any country or region in which it has been approved for wireless use.

Important Safety Instructions	2
1. Installing the system	
1-1 Contents of the Product	9
1-2 Composition	10
1-3 Installation	14
1-4 Connecting Peripheral Devices (To Be Separately Purchased)	16
2. Using the system	
2-1 Turning on the Computer	18
2-2 Using Windows XP	21
2-3 Turning off the Computer	28
2-4 Rebooting the Computer	29
2-5 Using the Mouse	30
2-6 Cleaning the Mouse	32
2-7 Using the Keyboard	33
2-8 Using the CD-ROM Drive	35
2-9 Using the Disk Drive	39
2-10 Computer Virus	42
3. System Setup	
3-1 Entering System Setup	48
3-2 Booting with a USB drive	50
3-3 Setting a Password	52
3-4 Deleting or Changing a Password	53
3-5 Initializing System Setup	55
3-6 Deciding the Temporary Booting Orders	56
3-7 Setting the Power Saver Mode	57
3-8 Using Hyper-Threading Feature	58
4. System Recovery	60
5. Reinstallation of Drivers	
5-1 Reinstalling Printer driver	62
5-2 Reinstalling Sound driver	66
5-3 Reinstalling Video driver	67
6. System Expansion	
6-1 Opening the Computer Case	68
6-2 Main Board	69
6-3 Internal Connectors	70
6-4 Replacing the CPU	72
6-5 Expanding the Computer Memory	74
6-6 Adding a Hard Disk	78
6-7 Installing an Expansion Card	86
Product Specifications	91



Important Safety Instructions

Following instructions are to help users to use the product safely and properly and to prevent any potential risk or damage. Please read the following instructions carefully before using the product.

Installation



Warning

Do not use the product in damp places including a laundry room and bathroom.

The computer may not function correctly, and there is the risk of electric shock.

Operate the computer within a temperature range of 41 to 95°F (5°C~35°C) and 30 to 80% of relative humidity.

Dispose of its desiccating agent and vinyl packages properly.

A child may get suffocated by swallowing the desiccating agent or wearing the packages on head.



Caution

Use the product in a dust-free environment.

Otherwise, the product may malfunction.

Do not place any mechanical interference within a 15cm radius of the computer.

The computer may be heated from inside and result in a burn.

Keep away from the moisture condensation.

It may damage on the computer. If this happens, turn off the computer and make it dry before power is on

Operate the product in a place without electromagnetic interference.

Keep a proper distance between the computer and such electronic appliances as speakers that generate strong magnetic fields. Otherwise, data stored on the hard disk may be lost or the display color on the monitor may be impaired.

Power Connection

Warning

Do not use loose plugs or damaged power cords.

An electric shock or fire may occur.

Operate the product at the proper voltage.

Excessive voltage may result in damage on the product, electric shock or fire.

Use a socket with an earth pin equipped.

If not earthed, the product may cause an electric shock and get damaged.

Use power outlets with an earth pin installed and proper supply of rated electricity.

An electric leakage may cause an electric shock or fire.

Do not touch the power cord with your hands wet.

There is a possibility of an electric shock.

In the case that a strange noise is heard from the cord or plug, disconnect the power cord from the outlet immediately and contact the service center.

A fire or electric shock may occur.

Tightly connect the power cord to the outlet.

Loose connection of the power cord could cause a fire.

Pull the plug, not the cord, to disconnect the power.

Otherwise, a fire may occur or the product may get damaged.

Always keep the power cord and the outlet clean.

A fire may occur.

In the case that a watery or other alien substance enters inside the computer, disconnect the power and contact the service center.

Damaged parts may cause a fire or electric shock.

Use a socket with an earth pin equipped.

If not earthed, the product may cause an electric shock and get damaged.

Use power outlets with an earth pin installed and proper supply of rated electricity.

An electric leakage may cause an electric shock or fire.

Do not impair the cord by excessive bending or hard pressing. Keep the power cord out of reach of children and pets.

A damaged power cord may cause an electric shock or fire.

Using the Computer



Warning

Clean the computer with proper detergent and dry it completely before using it again.

Otherwise, a fire or electric shock may occur.

Disconnect the power and the Internet line from the modem, the LAN card and others in case of a lightning strike.

An electric shock or fire may occur.

Do not leave a cup or other containers filled with chemical or water near the computer.

In the case that liquid is spilt inside the computer, a fire or electric shock may occur.

Do not connect a key-phone line to the modem.

A fire may occur or the product may get damaged.

In the case that the computer is dropped or get damaged, disconnect the power and contact the service center.

If a damaged computer is used continuously, an electric shock or fire may occur.

Do not expose the computer to direct sunlight.

The product may be deformed or caught on fire due to a temperature rise.

Do not put a lit candle or burning cigarette on the computer.

A fire may occur or the product may get damaged.

If you smell or see smoke from the computer, stop using the computer and disconnect the power before contacting the service center.

A fire may occur.

Please ask one of our engineers to check the operational state after your computer has been repaired.

Otherwise, there exists a possibility of an electric shock or fire.

Leave the product away from heat-generating devices such as a heater.

The product may get deformed or catch on fire.

Before turning on the system, switch on peripheral devices.

Otherwise, the product may get damaged.

Turn off the system before switching off peripheral devices.

Otherwise, the product may get damaged.

Connect allowed devices only.

Otherwise, the product may get damaged.

Do not use a damaged CD-ROM disk or floppy disk.

Otherwise, the product may get damaged or an injury may occur.

It is recommended not to use a wireless LAN connection within a 5m radius of a microwave or plasma light. If you have to use wireless LAN and a plasma bulb within the range, however, do it through a channel between 11 and 13.

Still, the connection may not be made, or the transmission rate may drop.

Do not press "Eject" button while the Floppy/CD-ROM drive is running.

The data may be lost or the disk may spin out unexpectedly to cause an injury.

Insert a memory card in the correct direction.

A forceful insertion of the memory card may damage the product and the memory.

Do not drop a part or device of a computer when ejecting it.

If dropped, they may get damaged and cause an injury.

Storing and Moving the Computer

Caution

Before moving the computer, turn off the power and disconnect all cables.

If not, one may trip over the wire, damaging the computer and getting an injury.

Upgrading the Computer

Warning

When disassembling the computer, do not take out the power supply unit and prevent children from swallowing nuts unscrewed.

If a child swallowed a nut, they may get suffocated. In that case, see the doctor immediately.

Do not disassemble the power supply unit.

You may get an electric shock.

Before disassembling the product, turn off the system and disconnect the power cable. In case the telephone line is connected to the modem, disconnect the telephone line also.

An electric shock or fire may occur.

Do not disassemble or moderate the computer arbitrarily.

An electric shock may occur.

When handling computer parts, follow the instructions included in the manual.

Soldered prickles on the board may cause an injury.

Please use parts certified by LG Electronics.

A fire may occur or the product may get damaged.

Please contact our service center before you connect an peripheral device not manufactured by LG Electronics to your computer.

The product may get damaged.

Safety Notes to Prevent Data Loss (HDD Management)

Caution

Handle the computer with care to prevent a data loss.

- Since the hard disk is sensitive to shocks, please make a back-up file of important data all the time.
- The manufacturer will not be responsible for any hard-disk data loss caused by a user's mistake.

Hard disk damage and data loss may occur when.

- External shocks are given on the computer while the computer is separated or installed.
- The computer is reset (rebooted) due to a power failure while the hard disk is running.
- The computer is infected with a virus, tainting the data recoverably.
- The power is abruptly disconnected.
- Moving, shaking or pounding the computer while the hard disk is running, and thus causing file damage or bad sectors.

It is recommended to back up the data to minimize damage caused by hard disk damage.

The manufacturer is not responsible for any data loss.

● Help and Support

Click the "Help and Support" menu to learn Windows operation and troubleshooting, and receive technical supports. Please read the menu before using the computer.

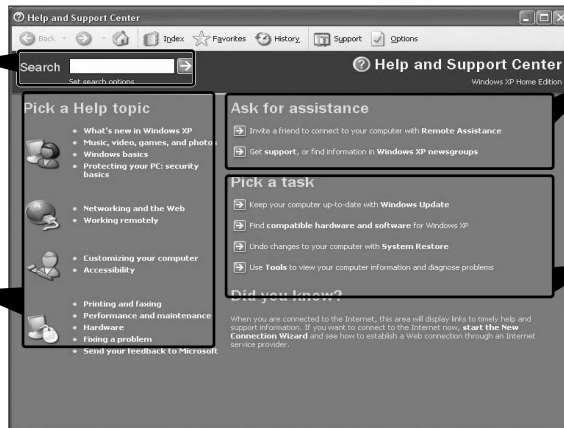
1 Click [Start] button, and then **Help and Support**.



2 Then, the following screen will appear.

Suggested items, text search result, Microsoft Knowledge Base and other contents are investigated. Microsoft Knowledge Base is supported only when the Internet is connected.

By selecting proper items, the user can check functions of Windows XP and troubleshooting.



Through the Internet connection, the user can ask others for a help and receive the telephone number of the technical support center.

The user can configure the optimal environment for computers.

1. Installing the system



1-1. Contents of the Product

Contents and the front design of the product may differ by model.



Caution

Be sure to use designated cleaning chemicals to clean your computer. Use of other chemicals such as thinner, benzene or alcohol may cause damage or deformation of the product.



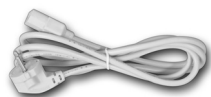
Computer



Keyboard



Mouse



Power Cord



User's guide



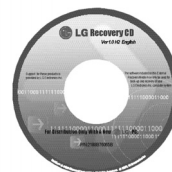
Troubleshooting guide



Modem cable



LG GILJABI CD
(Software installation CD)



Recovery CD

1-2. Composition

Front Part



❶ Power Button/Power Lamp and H/D Indication Lamp

Turns on/off the computer. Indicates the power and the hard disk state when the computer is turned on(When the hard disk is running, the lamp will blink. However, this feature may not function in some systems.).

❷ Floppy disk drive

Enables reading from and writing to a 3.5 inch floppy disk.

❸ Floppy disk drive button

Floppy disk drive button is used when insert/eject floppy into floppy disk drive.

❹ CD-ROM Drive Button

Inserts or ejects a CD in/from the CD-ROM drive.

(The cover is opened and closed automatically if the user presses this button.)

❺ CD-ROM Drive

Operates a large-capacity data CD or video/audio CD as one of auxiliary memory devices. (Depending on product model, CD-RW and DVD-ROM drives may be equipped.)

❻ Sound Connector



Earphone Connector

A port for external earphones.



Microphone Connector

A port for external microphone.

❼ USB Connector

Connects USB devices or hubs (including a USB mouse or digital camera).

❽ S/PDIF Connector

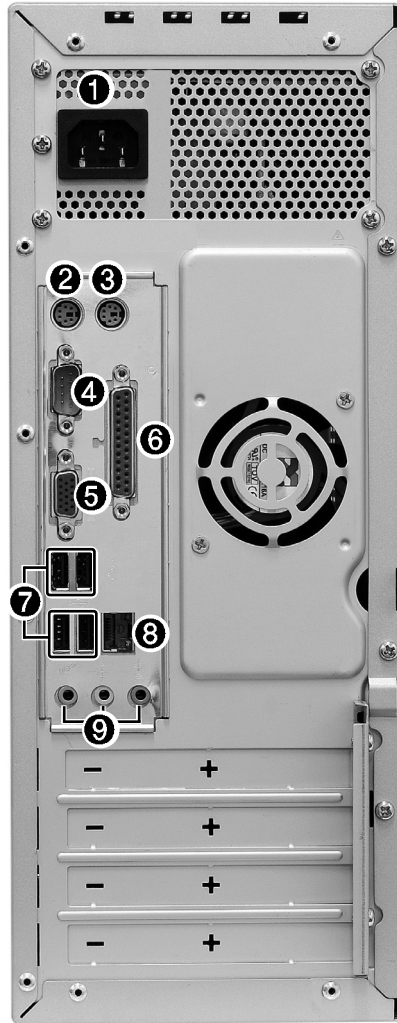
You can enjoy the digital sound by connecting S/PDIF supporting amplifiers to the S/PDIF output connector.

❾ IEEE 1394 Connector

IEEE 1394 devices, such as external hard disk drive or CD-RW drive, MP3 player, digital camera, and video camcorder can be connected to your PC.

※ Specifications may be different depending on the product model.

Rear Part



Note

■ The rear configuration may differ from the image depending on product model.

❶ Computer Power Connector

Connects the power cord to provide power to the computer.

❷ Keyboard Connector

Connects a PS/2 keyboard.

❸ Mouse Connector

Connects a PS/2-type mouse.

❹ Serial Connector

A serial communication connector to exchange data between the computer and external devices.

❺ Video Connector

Connects the monitor cable to use a built-in video. Does not function when a video card is installed.

❻ Parallel Connector

Parallel communication connector to transmit data from the computer to external devices, mostly to the printer.

❼ USB (USB 2.0 Port) Connector

Connects USB devices or hubs such as USB mouse or digital cameras.

❽ LAN

Connects other systems and hubs through the UTP at 10/100/1000 Mps.

❾ Sound Connector

 **External Speaker Connector**

Hosts an external speaker Connector.

 **Line Input Connector**

Hosts an external audio Connector.

 **Microphone Connector**

Hosts an external microphone Connector.



Warning

Do not disassemble power supplies.
There is a risk of electrical shock.

1-3. Installation

Installation is not difficult, and we recommend users to install by themselves. Before installation, turn off the computer and all peripheral devices. As the keyboard and the mouse use same-shaped connectors, please check the symbols next to the mouse connector hole and the keyboard connector hole. Card composition is different from product to product.



Warning

- Do not leave a liquid container on the computer. An electric shock may occur and the system could break down.
- Keep the ventilation hole of the power supply unit free of alien substances. Internal parts of the computer may get damaged and an electric shock may occur.

1 Connecting the Keyboard

The connector of the keyboard cable is round in shape and consists of 6 pins.



Insert the keyboard connector pin correctly in the keyboard connector hole on the rear panel of the computer. Insert the keyboard cable connector as shown in the figure.

2 Connecting a Mouse

The mouse cable has a round connector with 6 pins.



The round connector on the mouse cable fits into the PS/2 connector on the rear of the computer. Be sure to align the 6 pins on the cable with the corresponding holes on the connector.

3 Using the Keyboard Support

Installed at the bottom of the keyboard.



Raise the keyboard supports to relieve fatigue on the wrists.

4 Connecting Power

Power supply is 110V/220V (selection) or 220V only.



Connect the power cord to the computer and the outlet on the wall.



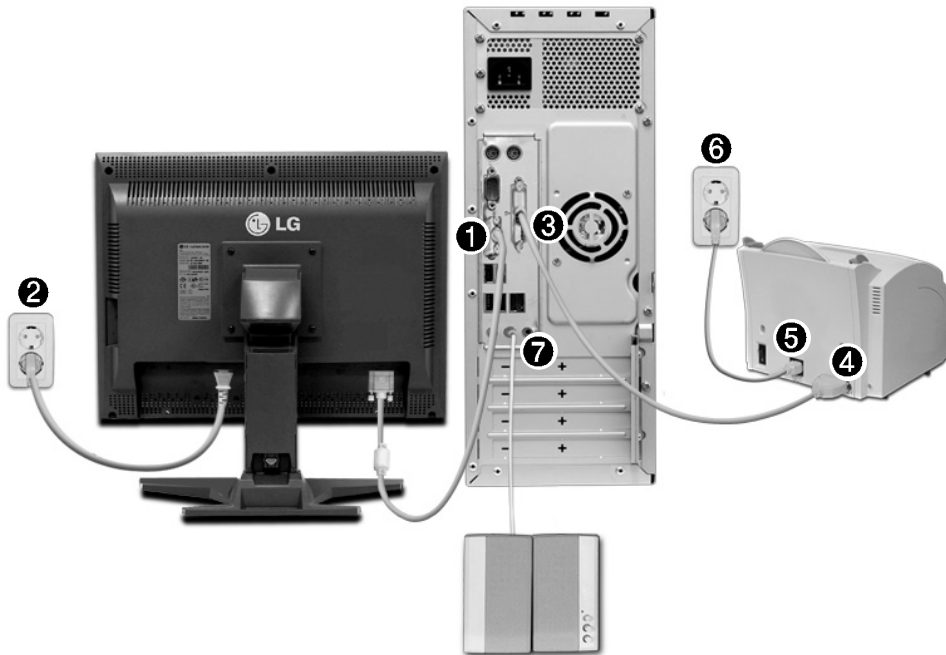
Warning

- Power supply is 110V/220V (selection) or 220V only.
- Check the location of the switching button when 110V/220V (selection) is used.



- Operate the product at the proper voltage when selecting 110V or 220V power supply. Incorrect use of power supply may damage on the product or fire.

1-4. Connecting Peripheral Devices (To Be Separately Purchased)



Warning

- Do not connect too many cables to one extension cord. An electric shock may occur.
- Do not leave the power cord below the body.
- Do not touch the outlet when connecting or disconnecting the power cord. An electric shock may occur.

Connecting Monitor (To Be Separately Purchase)

The monitor signal cable and the power cords are included in the package box.

For more information about using the monitor, see the monitor manual.



When using a built-in video



When the video card is installed

- ❶ Connect the monitor signal cable to the Video port to transmit computer signals to the monitor.
- ❷ Connect the monitor power cable both to the monitor and the power outlet to supply power to the monitor. When turning on/off the computer, turn on/off the monitor. When using the same power supply unit for the computer and the monitor, check the voltage of the monitor before turning on.

Connecting the Printer (To Be Separately Purchased)

The printer cable and the power cords are included in the package box.

For more information about using the printer, see the printer manual.




- ❸ Connect the printer cable to a parallel connector of the computer. (However if the printer supports USB ports, connect it to the USB connector.)
- ❹ Connect the other end of the printer cable to the printer parallel connector.
- ❺ Connect the power cord of the printer to the printer power connector.
- ❻ Connect the power plug of the printer to the power outlet.

Connecting the Speakers (To BE Separately Purchased)

This product is not equipped with speakers.

To output sound, connect external speakers.



- ❺ Connect the speaker connector to External Speaker (() connector on the rear panel of the computer.

Note

- In the case where sound is too low or mute, adjust the volume by clicking on the [Volume] icon on the right end of the Windows task bar.



2.Using the System



2-1.Turning on the Computer

Check if the floppy disk drive on the front part of the computer is empty and the power cord and the peripheral devices are connected to the computer on the rear panel. After installing the system, register user information. Turn on the power of the main body, and register user information by following the Windows screen instructions.

● Registration process

- 1 Pressing the power switch starts the self-diagnostic procedures; then Windows(R) XP startup screen is displayed .In a moment, a dialogue box, saying **Welcome to Microsoft Windows** appears on the screen. Then Click **[Next]**.



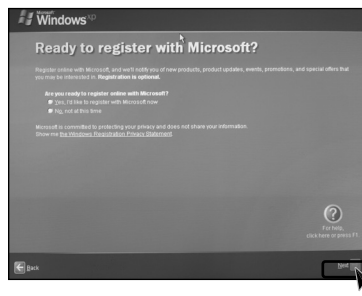
- 2 After **Help protect your PC** message appears on the screen, select **Help protect my PC by turning on Automatic Updates now** and then press **[Next]**.



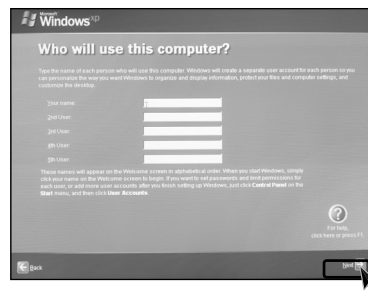
3 Internet connection option screen appears, follow the instruction.



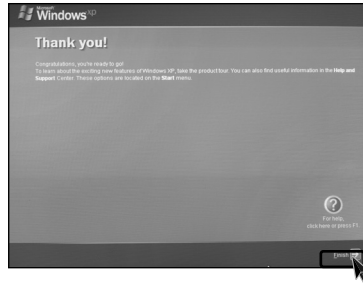
4 If you turn the power on the computer for the first time, you have to register your copy of Windows XP. The registration process may differ depending on the model, but the difference does not affect the use of your computer.



5 **Who will use this computer?** message appears on the screen. Type the names of the users and click **[Next]**.



- 6 "Thank you!" message appears on the screen.
Click **[Finish]** to complete the registration process.



Caution

Certificate of Authenticity

The certificate of authenticity includes the Windows product key. This certificate is the unique indication that proves your Windows is authentic. Do not damage or remove this sticker (attached on the side of the product.).

※The certificate provided may be different from this image.

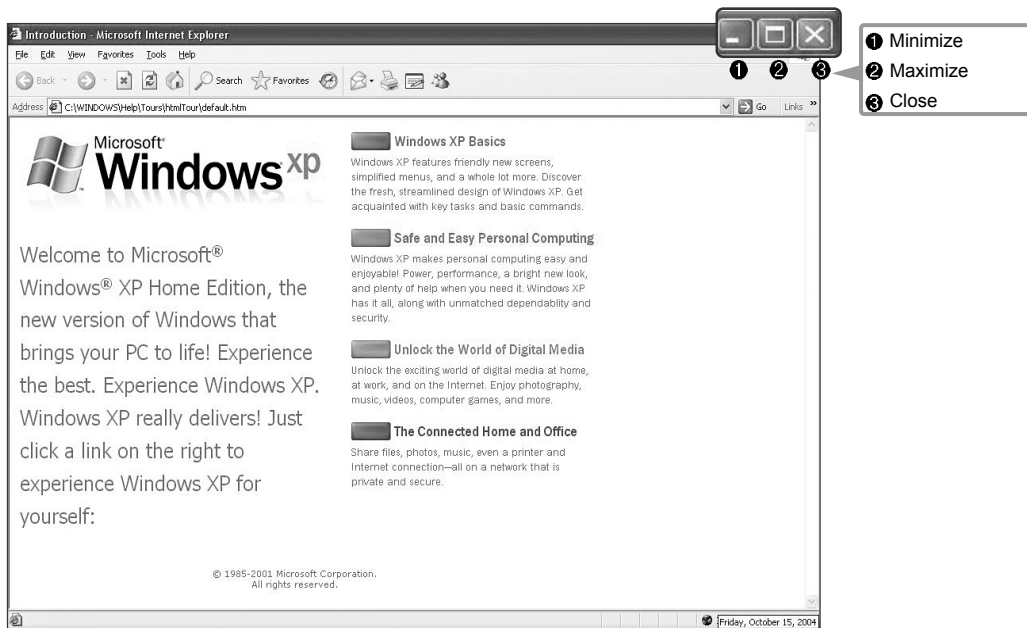


2-2.Using Windows XP

Windows XP is brilliant, fresh, and easy to use. The desktop and task bar images are simplified, and you can easily access applications through the Start menu. There are more "Desktop" options for you to customize the environment.

● Windows XP Tour

Windows is an operation system of the computer. It is recommended to know basic functionality of Windows for better use of a computer.



Click the **[Start]** button and click **Windows XP Tour**.

Then, the window will appear. Select a feature of Windows XP to view detailed description.