

User's Guide

E1950S

E2050S

E2250S

E2350S

Make sure to read the **Important Precautions** before using the product. Keep the User's Guide(CD) in an accessible place for future reference.

See the label attached on the product and give the information to your dealer when you ask for service.

This unit has been engineered and manufactured to ensure your personal safety, however improper use may result in potential electrical shock or fire hazards. In order to allow the proper operation of all safeguards incorporated in this display, observe the following basic rules for its installation, use, and servicing.

On Safety

Use only the power cord supplied with the unit. In case you use another power cord, make sure that it is certified by the applicable national standards if not being provided by the supplier. If the power cable is faulty in any way, please contact the manufacturer or the nearest authorized repair service provider for a replacement.

The power supply cord is used as the main disconnection device. Ensure that the socket-outlet is easily accessible after installation.

Operate the display only from a power source indicated in the specifications of this manual or listed on the display. If you are not sure what type of power supply you have in your home, consult with your dealer.

Overloaded AC outlets and extension cords are dangerous. So are frayed power cords and broken plugs. They may result in a shock or fire hazard. Call your service technician for replacement.

As long as this unit is connected to the AC wall outlet, it is not disconnected from the AC power source even if the unit is turned off.

Do not Open the Display:

- There are no user serviceable components inside.
- There are Dangerous High Voltages inside, even when the power is OFF.
- Contact your dealer if the display is not operating properly.

To Avoid Personal Injury :

- Do not place the display on a sloping shelf unless properly secured.
- Use only a stand recommended by the manufacturer.
- Do not drop an object on or apply impact to the product. Do not throw any toys or objects on the product screen.
It can cause injury to human, problem to product and damage the display.

To Prevent Fire or Hazards:

- Always turn the display OFF if you leave the room for more than a short period of time. Never leave the display ON when leaving the house.
- Keep children from dropping or pushing objects into the display's cabinet openings. Some internal parts carry hazardous voltages.
- Do not add accessories that have not been designed for this display.
- When the display is to be left unattended for an extended period of time, unplug it from the wall outlet.
- In the presence of thunder and lightning, never touch the power cord and signal cable because it can be very dangerous. It can cause electric shock.

On Installation

Do not allow anything to rest upon or roll over the power cord, and do not place the display where the power cord is subject to damage.

Do not use this display near water such as near a bathtub, washbowl, kitchen sink, laundry tub, in a wet basement, or near a swimming pool.

Displays are provided with ventilation openings in the cabinet to allow the release of heat generated during operation. If these openings are blocked, built-up heat can cause failures which may result in a fire hazard. Therefore, NEVER:

- Block the bottom ventilation slots by placing the display on a bed, sofa, rug, etc.
- Place the display in a built-in enclosure unless proper ventilation is provided.
- Cover the openings with cloth or other material.
- Place the display near or over a radiator or heat source.

Do not rub or strike the Active Matrix LCD with anything hard as this may scratch, mar, or damage the Active Matrix LCD permanently.

Do not press the LCD screen with your finger for a long time as this may cause some afterimages.

Some dot defects may appear as Red, Green or Blue spots on the screen. However, this will have no impact or effect on the display performance.

If possible, use the recommended resolution to obtain the best image quality for your LCD display. If used under any mode except the recommended resolution, some scaled or processed images may appear on the screen. However, this is characteristic of the fixed-resolution LCD panel.

Leaving a fixed image on the screen for a long time may cause damage to the screen and cause image burn-in. Make sure to use a screen saver on the product. Burn-in and related problems are not covered by the warranty on this product.

Do not shock or scratch the front and sides of the screen with metallic objects. Otherwise, it may cause damage to the screen.

Make sure the panel faces forward and hold it with both hands to move. If you drop the product, the damaged product can cause electric shock or fire. Contact an authorized the service center for repair.

Avoid high temperatures and humidity.

NOTE

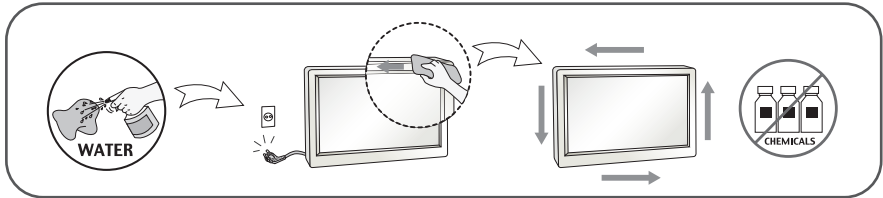
- THE MANUFACTURER IS NOT RESPONSIBLE FOR ANY RADIO OR TV INTERFERENCE CAUSED BY UNAUTHORIZED MODIFICATIONS TO THIS EQUIPMENT. SUCH MODIFICATIONS COULD VOID THE USER'S AUTHORITY TO OPERATE THE EQUIPMENT.

NOTE

- This equipment has been tested and found to comply with the limits for a class B digital device, pursuant to part 15 of the FCC Rules. These limits are designed to provide reasonable protection against harmful interference in a residential installation. This equipment generates, uses and can radiate radio frequency energy and, if not installed and used in accordance with the instructions, may cause harmful interference to radio communications. However, there is no guarantee that interference will not occur in a particular installation. If this equipment does cause harmful interference to radio or television reception, which can be determined by turning the equipment off and on, the user is encouraged to try to correct the interference by one or more of the following measures:
 - Reorient or relocate the receiving antenna.
 - Increase the separation between the equipment and the receiver.
 - Connect the equipment into an outlet on a circuit different from that to which the receiver is connected.
 - Consult the dealer or an experienced radio/TV technician for help.

On Cleaning

- Unplug the display before cleaning the face of the display screen.
- Use a slightly damp (not wet) cloth. Do not use an aerosol directly on the display screen because over-spraying may cause electrical shock.
- When cleaning the product, unplug the power cord and scrub gently with a soft cloth to prevent scratching. Do not clean with a wet cloth or spray water or other liquids directly onto the product. An electric shock may occur. (Do not use chemicals such as benzene, paint thinners or alcohol)
- Spray water onto a soft cloth 2 to 4 times, and use it to clean the front frame; wipe in one direction only. Too much moisture may cause staining.



On Repacking

- Do not throw away the carton and packing materials. They make an ideal container in which to transport the unit. When shipping the unit to another location, repack it in its original material.

On Disposal

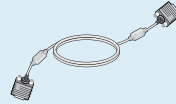
- The fluorescent lamp used in this product contains a small amount of mercury.
- Do not dispose of this product with general household waste.
- Disposal of this product must be carried out in accordance to the regulations of your local authority.

!!! Thank for selecting LGE products !!!

- Please make sure the following items are included with your monitor. If any items are missing, contact your dealer.



User's Guide/Cards



15-pin D-Sub Signal Cable
(To set it up, this signal cable may be attached to this product before shipping out.)



Power Cord
(Depending on the country)



AC-DC adapter

(Depending on the country)

Or



AC-DC adapter
(Depending on the country)

NOTE

- This accessories may look different from those shown here.
- User must use shielded signal interface cables (D-sub 15 pin cable, DVI-D cable) with ferrite cores to maintain standard compliance for the product.

Connecting the Display

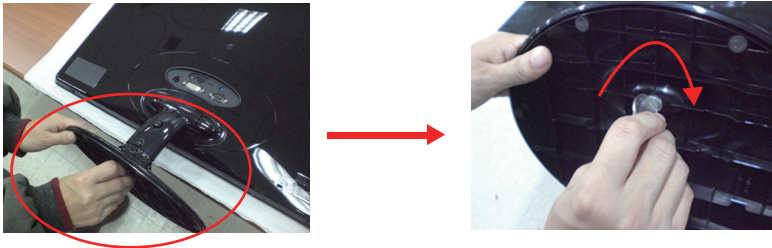
- Before setting up the monitor, ensure that the power to the monitor, the computer system, and other attached devices is turned off.

1 way stand

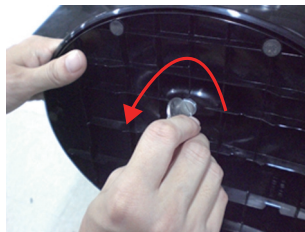
1. Place the monitor with its front facing downward on a soft cloth.



2. Use a coin on the back of the stand base and turn the screw clockwise to tighten.



3. Once assembled take the monitor up carefully and face the front side.
4. When you desire to disintegrate the monitor from the stand base, use a coin to turn the screw counterclockwise.



Important

- This illustration depicts the general model of connection. Your monitor may differ from the items shown in the picture.
- Do not carry the product upside down holding only the stand base. The product may fall and get damaged or injure your foot.

Connecting the Display

- Before setting up the monitor, ensure that the power to the monitor, the computer system, and other attached devices is turned off.

2 way stand

1. Place the monitor with its front facing downward on a soft cloth.

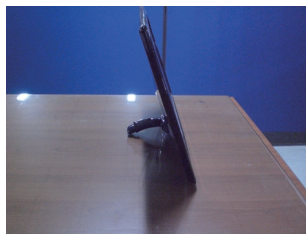


2. Press the button as shown, and pull the stand body up.



3. After pull the stand body up, take the monitor up carefully and face the front side.

(Once you pull the stand body up, please keep pressing the button. If you don't press the button, it will damage the product.)

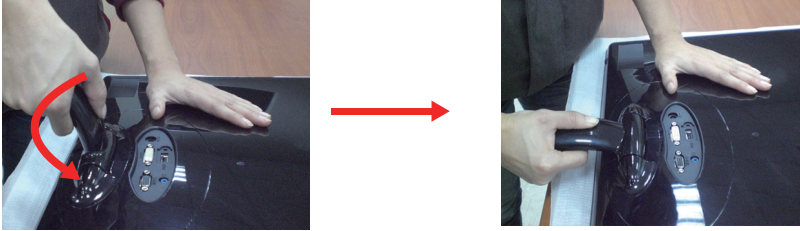


When limited tilt degree, the button is not working, pull stand body up or down a little.

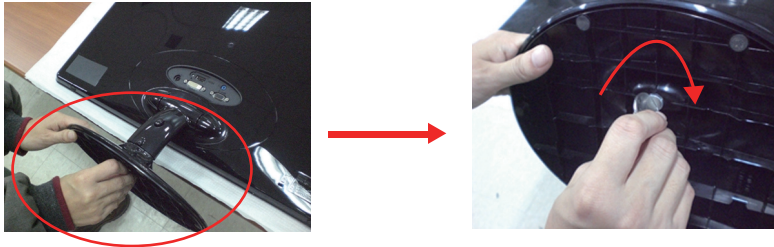
Connecting the Display

4. If you want to use the stand base, pull the stand body down.

(Once you pull the stand body down, please keep pressing the button. If you don't press the button, it will damage the product.)



5. Use a coin on the back of the stand base and turn the screw clockwise to tighten.



6. Once assembled take the monitor up carefully and face the front side.

Important

- This illustration depicts the general model of connection. Your monitor may differ from the items shown in the picture.
- Do not carry the product upside down holding only the stand base. The product may fall and get damaged or injure your foot.

- Before setting up the monitor, ensure that the power to the monitor, the computer system, and other attached devices is turned off.

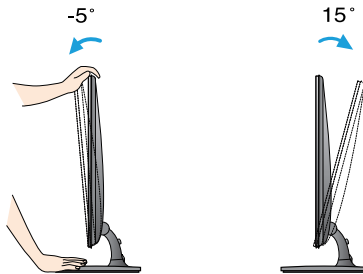
Positioning your display

After installation, adjust the angle as shown below.

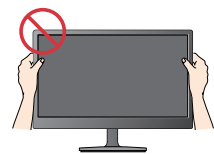
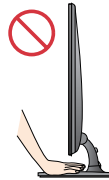
* With stand base

Adjust the position of the panel in various ways for maximum comfort.

- Tilt Range : -5° - 15°



- Do not touch or press the screen when adjusting the angle of the monitor.
- When adjusting the angle of the screen, do not put your finger(s) in between the head of the monitor and the stand body. You can hurt your finger(s).



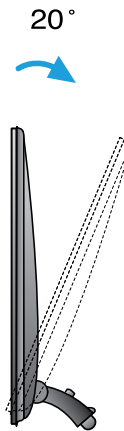
ERGONOMIC

- It is recommended that in order to maintain an ergonomic and comfortable viewing position, the forward tilt angle of the monitor should not exceed 5 degrees.

- Before setting up the monitor, ensure that the power to the monitor, the computer system, and other attached devices is turned off.

Positioning your display

* Without stand base



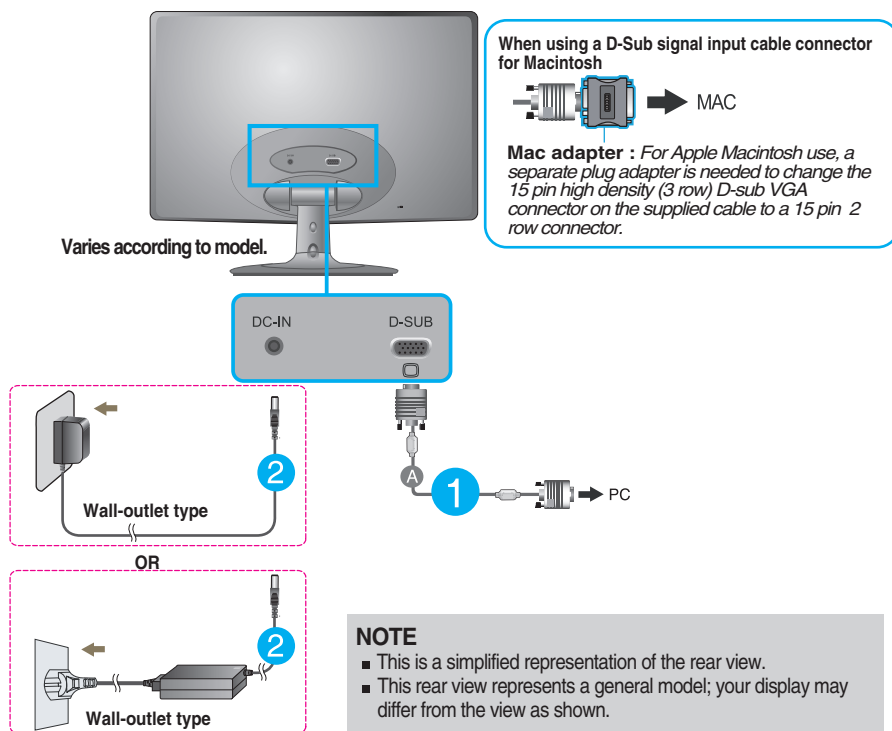
Ergonomic

It is recommended that in order to maintain an ergonomic and comfortable viewing position, the backward tilt angle of the monitor should exceed 10 degrees.

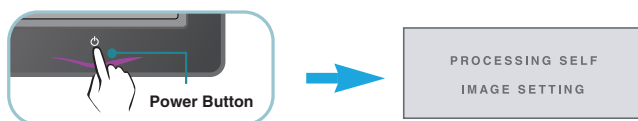
Connecting with the PC

1. Before setting up the monitor, ensure that the power to the monitor, the computer system, and other attached devices is turned off.
2. Connect signal input cable ① and power cord ② in order, then tighten the screw of the signal cable.

Ⓐ Connect D-sub(Analog signal) Cable



3. Press the power button on the front panel to turn the power on. When monitor power is turned on, the 'Self Image Setting Function' is executed automatically.

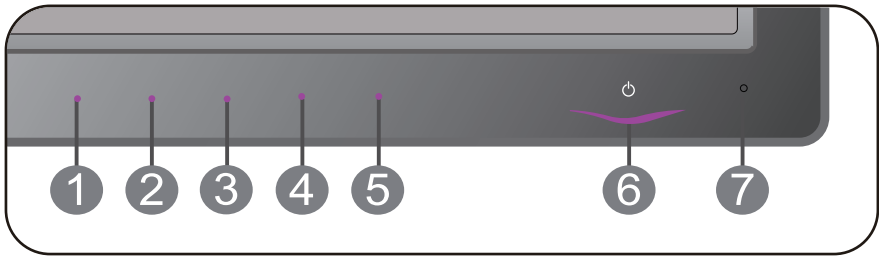


NOTE

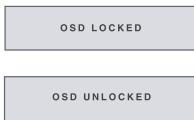
'Self Image Setting Function'? This function provides the user with optimal display settings. When the user connects the monitor for the first time, this function automatically adjusts the display to optimal settings for individual input signals.

'AUTO' Function? When you encounter problems such as blurry screen, blurred letters, screen flicker or tilted screen while using the device or after changing screen resolution, press the AUTO function button to improve resolution.

Front Panel Controls



1 MENU Button



OSD LOCKED/UNLOCKED

This function allows you to lock the current control settings, so that they cannot be inadvertently changed. Press and hold the **MENU button** for several seconds. The message "**OSD LOCKED**" should appear.

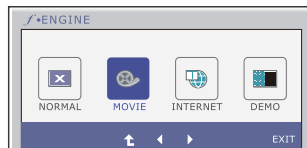
You can unlock the OSD controls at any time by pushing the **MENU button** for several seconds. The message "**OSD UNLOCKED**" should appear.

2 SMART+ Button

Use this button to enter **AUTO BRIGHT, ORIGINAL RATIO, DUAL WEB, CINEMA MODE** menus. For more information, refer to page 19~21.

3 f+ENGINE Button

For more information, refer to page 22~23.



4 AUTO Button



AUTO IMAGE ADJUSTMENT

When adjusting your display settings, always press the **AUTO** button before entering the On Screen Display(OSD). (Only Analog Mode)

This will automatically adjust your display image to the ideal settings for the current screen resolution size (display mode).

The best display mode is

E1950S : 1360 x 768

E2050S : 1600 x 900

E2250S : 1920 x 1080

E2350S : 1920 x 1080

5 EXIT Button

Exit the OSD(On Screen Display).

6 Power Button & Power Indicator

Use this button to turn the display on or off.

From front view,the power indicator stays purple if the display is running properly (On Mode). If the display is in Sleep Mode (Energy Saving), the power indicator is blinking purple.

7 Light Sensor

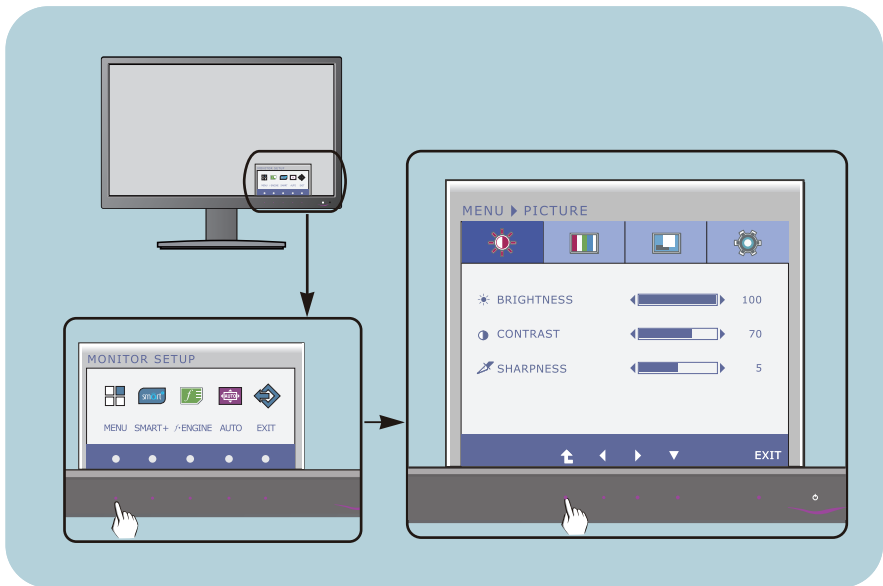
This is lens for light sensor detect outside luminance, when setting AUTO BRIGHT ON.

Screen Adjustment

Making adjustments to the image size, position and operating parameters of the display is quick and easy with the On Screen Display Control system.

A short example is given below to familiarize you with the use of the controls. The following section is an outline of the available adjustments and selections you can make using the OSD.

To make adjustments in the On Screen Display, follow these steps:



- 1 Press the discretionary **Button**, then the main menu of the OSD appears.
- 2 To access a control, use the corresponding **Buttons**.
- 3 Use the **◀/▶ Buttons** to adjust the image to the desired level.
Use the **↑ Button** to select other sub-menu items.
- 4 Press the **EXIT Button** to exit from the OSD.

On Screen Display(OSD) Selection and Adjustment

The following table indicates all the On Screen Display control, adjustment, and setting menus.

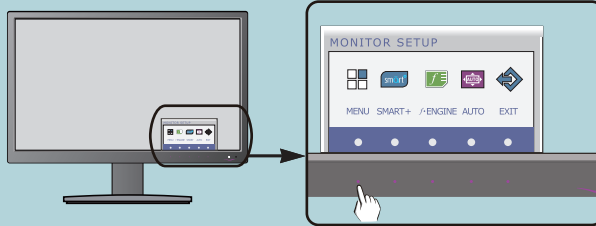
| Main menu | Sub-menu | Description |
|-----------------|-------------------------------|---|
| PICTURE | BRIGHTNESS | To adjust the brightness, contrast and sharpness of the screen |
| | CONTRAST | |
| | SHARPNESS | |
| COLOR | COLOR TEMP (PRESET / USER) | To customize the color of the screen |
| | GAMMA | |
| DISPLAY | HORIZONTAL VERTICAL | To adjust the position of the screen |
| | CLOCK PHASE | To improve the clarity and stability of the screen |
| OTHERS | LANGUAGE > ENGLISH | To customize the screen status for a user's operating environment |
| | POWER INDICATOR | |
| | BUTTON INDICATOR | |
| | WHITE BALANCE | |
| | FACTORY RESET | |
| SMART+ | AUTO BRIGHT | To adjust the image size |
| | ORIGINAL RATIO | |
| | DUAL WEB | |
| | CINEMA MODE | |
| F-ENGINE | NORMAL | To select or customize desired image settings |
| | MOVIE | |
| | INTERNET | |
| | DEMO | |

NOTE

- The order of icons may differ depending on the model (14~23).

On Screen Display(OSD) Selection and Adjustment

- ■ ■ You were introduced to the procedure of selecting and adjusting an item using the OSD system. Listed below are the icons, icon names, and icon descriptions of the all items shown on the Menu.



Press the **MENU** Button, then the main menu of the OSD appears.

Menu Name — MENU > PICTURE

Icons — [Sun icon], [Flag icon], [Monitor icon], [Gear icon]

Sub-menus — BRIGHTNESS 100, CONTRAST 70, SHARPNESS 5

Button Tip — EXIT, Left Arrow, Right Arrow, Down Arrow, Up Arrow

- EXIT : Exit
- ◀▶ : Adjust (Decrease/Increase)
- ▼ : Select another sub-menu
- ⬆ : Restart to select sub-menu

NOTE

- OSD (On Screen Display) menu languages on the monitor may differ from the manual.

| Main menu | Sub menu | Description |
|-----------|----------|-------------|
|-----------|----------|-------------|



- BRIGHTNESS** To adjust the brightness of the screen.
- CONTRAST** To adjust the contrast of the screen.
- SHARPNESS** To adjust the clearness of the screen.

- **Exit** : Exit
- ◀ : Decrease
- ▶ : Increase
- ▼ : Select another sub-menu
- ⬆ : Restart to select sub-menu





- COLOR TEMP**
- PRESET** Select the screen color.
 - sRGB: Set the screen color to fit the sRGB standard color specification.
 - 6500K-7500K: Red screen color.
 - 8500K-9300K: Blue screen color.

- **Exit** : Exit
- ◀ : Decrease
- ▶ : Increase
- ▼ : Select another sub-menu
- ⬆ : Restart to select sub-menu

- USER**
- **RED** Set your own red color levels.
- **GREEN** Set your own green color levels.
- **BLUE** Set your own blue color levels.

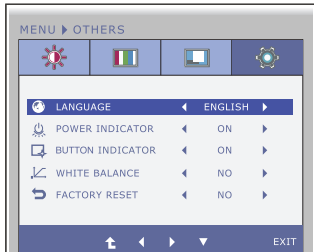
- GAMMA** Set your own gamma value. : 0 / 1 / 2
On the monitor, high gamma values display whitish images and low gamma values display blackish images.

| Main menu | Sub menu | Description |
|---|-------------------|--|
|  | DISPLAY | |
|  | HORIZONTAL | To move image left and right. |
| | VERTICAL | To move image up and down. |
| | CLOCK | To minimize any vertical bars or stripes visible on the screen background. The horizontal screen size will also change. |
| <ul style="list-style-type: none">■ Exit : Exit■ ◀ : Decrease■ ▶ : Increase■ ▼ : Select another sub-menu■ ⬆ : Restart to select sub-menu | PHASE | To adjust the focus of the display. This item allows you to remove any horizontal noise and clear or sharpen the image of characters. |

| Main menu | Sub menu | Description |
|-----------|----------|-------------|
|-----------|----------|-------------|



OTHERS



LANGUAGE

To choose the language in which the control names are displayed.

POWER INDICATOR

Use this function to set the power indicator on the front side of the monitor to **ON** or **OFF**.

If you set **OFF**, it will be turned off. If you set **ON** at any time, the power indicator will automatically be turned on.

- **Exit** : Exit
- ◀ : Decrease
- ▶ : Increase
- ▼ : Select another sub-menu
- ▲ : Restart to select sub-menu

BUTTON INDICATOR

Use this function to set the control key indicator on the front side of the monitor to **ON** or **OFF**.

If you set **OFF**, it will be turned off. If you set **ON**, it will be turned on.

WHITE BALANCE

If the output of the video card is different the required specifications, the color level may deteriorate due to video signal distortion. Using this function, the signal level is adjusted to fit into the standard output level of the video card in order to provide the optimal image.

Activate this function when white and black colors are present in the screen.

FACTORY RESET

Restore all factory default settings except "**LANGUAGE**."

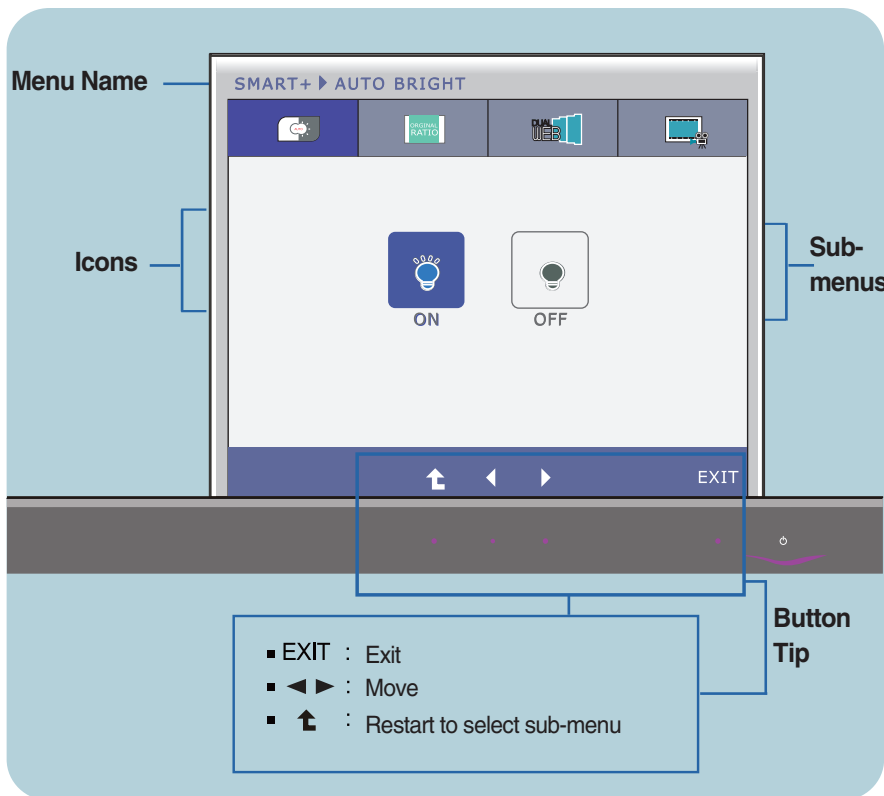
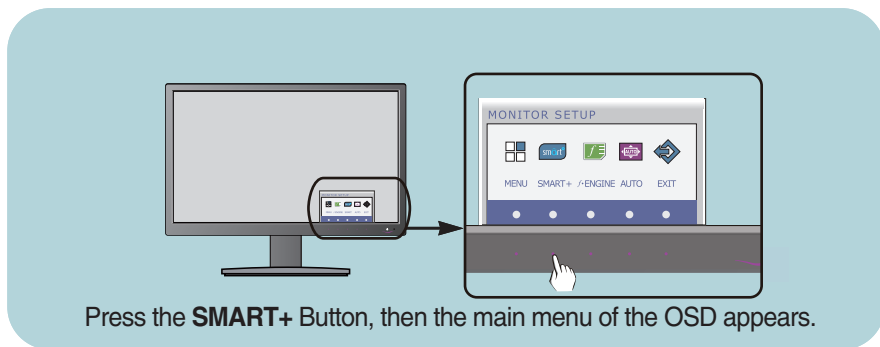
Press the ◀, ▶ buttons to reset immediately.

NOTE

- If this does not improve the screen image, restore the factory default settings. If necessary, execute the **WHITE BALANCE** function again. This function will be enabled only when the input signal is an analog signal.


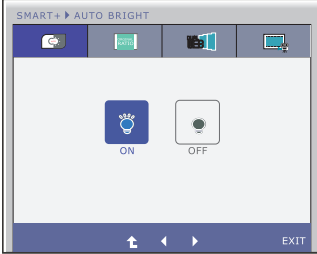
On Screen Display(OSD) Selection and Adjustment

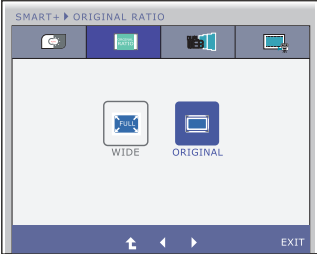
- ■ ■ You were introduced to the procedure of selecting and adjusting an item using the OSD system. Listed below are the icons, icon names, and icon descriptions of the all items shown on the Menu.



NOTE

- OSD (On Screen Display) menu languages on the monitor may differ from the manual.

| Main menu | Sub menu | Description |
|---|--------------------|---|
|  | SMART+ | |
|  | AUTO BRIGHT | <p>If select on,it automatically controls the brightness of display to best suit the surrounding working environment,providing the optimal viewing condition and maximized user convenience.</p> <p>If select off,auto brightness is off.</p> |

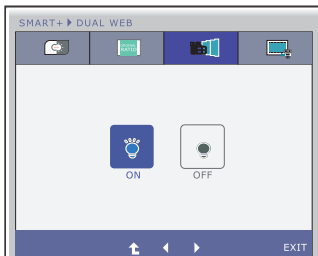
| | | |
|---|-----------------------|---|
|  | ORIGINAL RATIO | <p>Switch to full screen mode according to input image signal.</p> <p>*This function works only if input resolution is lower than monitor ratio (16:9).</p> |
|---|-----------------------|---|

| Main menu | Sub menu | Description |
|-----------|----------|-------------|
|-----------|----------|-------------|

* Before using below functions, please install Easy Set Package programme.

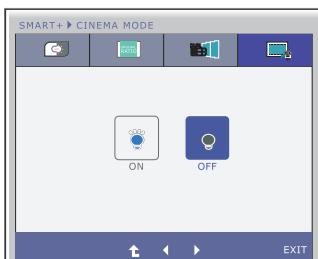


SMART+



DUAL WEB

- Help user to browse web efficiently by dividing in half.
- Help to arrange and move windows on screen.
- Help user to control divided windows ratio.



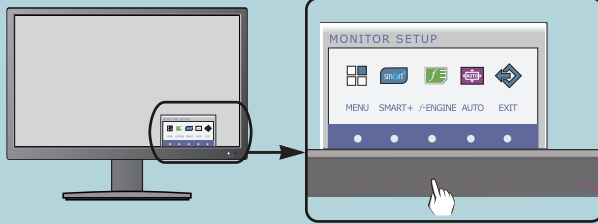
CINEMA MODE

- Make the eye comfortable by reducing the background brightness in the web page.

- **Exit** : Exit
- **◀, ▶** : Move
- **↶** : Restart to select sub-menu

On Screen Display(OSD) Selection and Adjustment

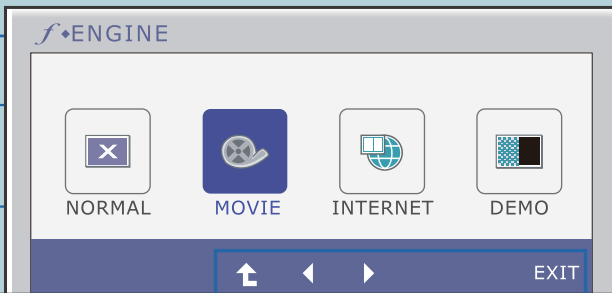
- ■ ■ You were introduced to the procedure of selecting and adjusting an item using the OSD system. Listed below are the icons, icon names, and icon descriptions of the all items shown on the Menu.



Press the *f•ENGINE* Button, then the main menu of the OSD appears.

Menu Name

Icons



Sub-
menus

Button
Tip

- EXIT : Exit
- ◀ ▶ : Move
- ⬆ : Restart to select sub-menu

NOTE

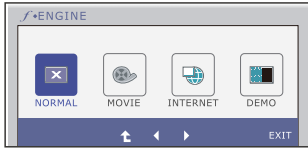
- OSD (On Screen Display) menu languages on the monitor may differ from the manual.

On Screen Display(OSD) Selection and Adjustment

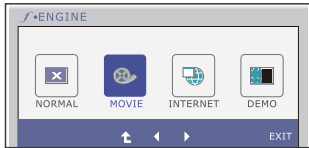
| Main menu | Sub menu | Description |
|-----------|----------|-------------|
|-----------|----------|-------------|



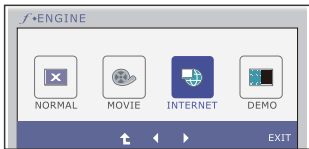
f•ENGINE



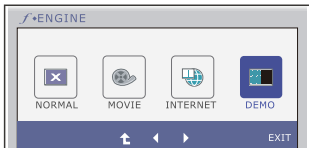
NORMAL Select this when you want to use the product in the most general using environment.



MOVIE Select this when you are watching a video or movie.



INTERNET Select this when you are working on the document (Word etc.)



DEMO This is used for advertising in the store. The screen will be divided to show the standard mode on the left and video mode on the right so that the consumers can check the difference after applying the video mode.

- **Exit** : Exit
- **◀, ▶** : Move
- **↑** : Restart to select sub-menu

Check the following before calling for service.

| No image appears | |
|---|--|
| <ul style="list-style-type: none">● Is the power cord of the display connected? | <ul style="list-style-type: none">• Check and see if the power cord is connected properly to the power outlet. |
| <ul style="list-style-type: none">● Is the power indicator light on? | <ul style="list-style-type: none">• Press the Power button. |
| <ul style="list-style-type: none">● Is the power indicator flickering? | <ul style="list-style-type: none">• If the display is in power saving mode, try moving the mouse or pressing any key on the keyboard to bring up the screen.• Try to turn on the PC. |
| <ul style="list-style-type: none">● Do you see an "OUT OF RANGE" message on the screen? | <ul style="list-style-type: none">• This message appears when the signal from the PC (video card) is out of horizontal or vertical frequency range of the display. See the 'Specifications' section of this manual and configure your display again. |
| <ul style="list-style-type: none">● Do you see a "CHECK SIGNAL CABLE" message on the screen? | <ul style="list-style-type: none">• This message appears when the signal cable between your PC and your display is not connected. Check the signal cable and try again. |

| Do you see a "OSD LOCKED" message on the screen? | |
|---|--|
| <ul style="list-style-type: none">● Do you see "OSD LOCKED" when you push MENU button? | <ul style="list-style-type: none">• You can secure the current control settings, so that they cannot be inadvertently changed. You can unlock the OSD controls at any time by pushing the MENU button for several seconds: the message "OSD UNLOCKED" will appear. |

Display image is incorrect

- | | |
|---|--|
| <ul style="list-style-type: none">● Display Position is incorrect. | <ul style="list-style-type: none">● Press the AUTO button to automatically adjust your display image to the ideal setting. If the results are unsatisfactory, adjust the image position using the H position and V position icon in the on screen display. |
| <ul style="list-style-type: none">● On the screen background, vertical bars or stripes are visible. | <ul style="list-style-type: none">● Press the AUTO button to automatically adjust your display image to the ideal setting. If the results are unsatisfactory, decrease the vertical bars or stripes using the CLOCK icon in the on screen display. |
| <ul style="list-style-type: none">● Any horizontal noise appearing in any image or characters are not clearly portrayed. | <ul style="list-style-type: none">● Press the AUTO button to automatically adjust your display image to the ideal setting. If the results are unsatisfactory, decrease the horizontal bars using the PHASE icon in the on screen display.● Check Control Panel --> Display --> Settings and adjust the display to the recommended resolution or adjust the display image to the ideal setting. Set the color setting higher than 24 bits (true color). |

IMPORTANT

- Check **Control Panel --> Display --> Settings** and see if the frequency or the resolution were changed. If yes, readjust the video card to the recommend resolution.
- If the recommended resolution (optimal resolution) is not selected, letters may be blurred and the screen may be dimmed, truncated or biased. Make sure to select the recommend resolution.
- The setting method can differ by computer and O/S (Operation System), and resolution mentioned above may not be supported by the video card performance. In this case, please ask to the computer or the video card manufacturer.

Display image is incorrect

- | | |
|--|---|
| <ul style="list-style-type: none">● The screen color is mono or abnormal. | <ul style="list-style-type: none">• Check if the signal cable is properly connected and use a screwdriver to fasten if necessary.• Make sure the video card is properly inserted in the slot.• Set the color setting higher than 24 bits (true color) at Control Panel - Settings. |
| <ul style="list-style-type: none">● The screen blinks. | <ul style="list-style-type: none">• Check if the screen is set to interlace mode and if yes, change it to the recommend resolution. |

Do you see an "Unrecognized monitor, Plug&Play (VESA DDC) monitor found" message?

- | | |
|---|---|
| <ul style="list-style-type: none">● Have you installed the display driver? | <ul style="list-style-type: none">• Be sure to install the display driver from the display driver CD (or diskette) that comes with your display. Or, you can also download the driver from our web site: http://www.lge.com.• Make sure to check if the video card supports Plug&Play function. |
|---|---|

| | | |
|---------------------------------|--|---|
| Display | 47.0 cm (18.5 inches) Flat Panel Active matrix-TFT LCD Anti-Glare coating Visible diagonal size : 47.0 cm 0.300 x 0.300 mm (Pixel pitch) | |
| Sync Input | Horizontal Freq. Vertical Freq. Input Form | 30 - 61 kHz (Automatic) 56 - 75 Hz (Automatic) Separate Sync. |
| Video Input | Signal Input Input Form | 15 pin D-Sub Connector RGB Analog (0.7 Vp-p/ 75 ohm) |
| Resolution | Max Recommend | VESA 1360 x 768 @ 60 Hz VESA 1360 x 768 @ 60 Hz |
| Plug&Play | DDC 2AB | |
| Power Consumption | On Mode Sleep Mode Off Mode | : 14 W(Typ.) ≤ 1 W ≤ 0.5 W |
| Dimensions & Weight | With Stand Width 45.90 cm (18.07 inches) Height 37.50 cm (14.76 inches) Depth 19.80 cm (7.80 inches) | Without Stand Width 45.90 cm (18.07 inches) Height 29.70 cm (11.69 inches) Depth 3.60 cm (1.41 inches) |
| | Weight(excl. packing) 2.4 kg (5.29 lbs) | |
| Range | Tilt : -5° - 15° | |
| Power Input | 12V --- 2.0A | |
| AC-DC Adapter | Type ADS-24S-12 1224G*,manufactured by HONOR Electronic or type MU24-B120200-xx,manufactured by LEADER Electronics or type ADS-24NP-12-1 12024G,manufactured by HONOR Electronic | |
| Environmental Conditions | Operating Conditions Temperature 10 °C to 35 °C Humidity 10 % to 80 % non-Condensing Storage Conditions Temperature -20 °C to 60 °C Humidity 5 % to 90 % non-Condensing | |
| Stand Base | Attached (<input type="checkbox"/>), Detached (<input type="radio"/>) | |
| Power cord | Wall-outlet type | |

NOTE

- Information in this document is subject to change without notice.

| | | |
|---------------------------------|--|---|
| Display | 50.8 cm (20.0 inches) Flat Panel Active matrix-TFT LCD Anti-Glare coating Visible diagonal size : 50.8 cm 0.2766 x 0.2766 mm (Pixel pitch) | |
| Sync Input | Horizontal Freq. Vertical Freq. Input Form | 30 - 83 kHz (Automatic) 56 - 75 Hz (Automatic) Separate Sync. |
| Video Input | Signal Input Input Form | 15 pin D-Sub Connector RGB Analog (0.7 Vp-p/ 75 ohm) |
| Resolution | Max Recommend | VESA 1600 x 900 @ 60 Hz VESA 1600 x 900 @ 60 Hz |
| Plug&Play | DDC2AB | |
| Power Consumption | On Mode Sleep Mode Off Mode | : 21 W(Typ.) ≤ 1 W ≤ 0.5 W |
| Dimensions & Weight | With Stand Width 49.28 cm (19.40 inches) Height 38.96 cm (15.34 inches) Depth 19.80 cm (7.80 inches) | Without Stand Width 49.28 cm (19.40 inches) Height 31.66 cm (12.46 inches) Depth 3.99 cm (1.57 inches) |
| | Weight(excl. packing) | 2.6 kg (5.73 lbs) |
| Range | Tilt : -5° - 15° | |
| Power Input | 12V $\overline{\text{---}}$ 2.0A | |
| AC-DC Adapter | Type ADS-24S-12 1224G*,manufactured by HONOR Electronic or type MU24-B120200-xx,manufactured by LEADER Electronics or type ADS-24NP-12-1 12024G,manufactured by HONOR Electronic | |
| Environmental Conditions | Operating Conditions Temperature 10 °C to 35 °C Humidity 10 % to 80 % non-Condensing Storage Conditions Temperature -20 °C to 60 °C Humidity 5 % to 90 % non-Condensing | |
| Stand Base | Attached (<input type="checkbox"/>), Detached (<input type="radio"/>) | |
| Power cord | Wall-outlet type | |

NOTE

- Information in this document is subject to change without notice.

| | | |
|----------------------------------|--|---|
| Display | 54.6 cm (21.5 inches) Flat Panel Active matrix-TFT LCD Anti-Glare coating Visible diagonal size : 54.6 cm 0.248 x 0.248 mm (Pixel pitch) | |
| Sync Input | Horizontal Freq. Vertical Freq. Input Form | 30 - 83 kHz (Automatic) 56 - 75 Hz (Automatic) Separate Sync. |
| Video Input | Signal Input Input Form | 15 pin D-Sub Connector RGB Analog (0.7 Vp-p/ 75 ohm) |
| Resolution | Max Recommend | VESA 1920 x 1080 @60 Hz VESA 1920 x 1080 @60 Hz |
| Plug&Play | DDC2AB | |
| Power Consumption | On Mode Sleep Mode Off Mode | : 23 W(Typ.) ≤ 1 W ≤ 0.5 W |
| Dimensions & Weight | With Stand | Without Stand |
| | Width 52.58 cm (20.70 inches) Height 40.83 cm (16.07 inches) Depth 19.80 cm (7.80 inches) | Width 52.58 cm (20.70 inches) Height 33.48 cm (13.18 inches) Depth 3.99 cm (1.57 inches) |
| | Weight(excl. packing) | 2.8 kg (6.17 lbs) |
| Range | Tilt : -5° - 15° | |
| Power Input | 12V $\overline{\text{---}}$ 3.0A | |
| AC-DC Adapter | Type FSP036-DGAA1,manufactured by FSP Group or type LCAP07F,manufactured by Lienchange Electronics | |
| Environment al Conditions | Operating Conditions Temperature 10 °C to 35 °C Humidity 10 % to 80 % non-Condensing Storage Conditions Temperature -20 °C to 60 °C Humidity 5 % to 90 % non-Condensing | |
| Stand Base | Attached (<input type="checkbox"/>), Detached (<input type="radio"/>) | |
| Power cord | Wall-outlet type | |

NOTE

- Information in this document is subject to change without notice.

| | | |
|----------------------------------|--|---|
| Display | 58.4 cm (23.0 inches) Flat Panel Active matrix-TFT LCD Anti-Glare coating Visible diagonal size : 58.4 cm 0.265 x 0.265 mm (Pixel pitch) | |
| Sync Input | Horizontal Freq. Vertical Freq. Input Form | 30 - 83 kHz (Automatic) 56 - 75 Hz (Automatic) Separate Sync. |
| Video Input | Signal Input Input Form | 15 pin D-Sub Connector RGB Analog (0.7 Vp-p/ 75 ohm) |
| Resolution | Max Recommend | VESA 1920 x 1080 @60 Hz VESA 1920 x 1080 @60 Hz |
| Plug&Play | DDC2AB | |
| Power Consumption | On Mode Sleep Mode Off Mode | : ≤ ≤ 28 W(Typ.) 1 W 0.5 W |
| Dimensions & Weight | With Stand | Without Stand |
| | Width 55.98 cm (22.04 inches) Height 42.81 cm (16.85 inches) Depth 19.80 cm (7.80 inches) | Width 55.98 cm (22.04 inches) Height 35.45 cm (13.96 inches) Depth 3.99 cm (1.57 inches) |
| | Weight(excl. packing) | 3.3 kg (7.28 lbs) |
| Range | Tilt : -5° - 15° | |
| Power Input | 12V \equiv 3.0A | |
| AC-DC Adapter | Type FSP036-DGAA1,manufactured by FSP Group or type LCAP07F,manufactured by Lienchange Electronics | |
| Environment al Conditions | Operating Conditions Temperature 10 °C to 35 °C Humidity 10 % to 80 % non-Condensing Storage Conditions Temperature -20 °C to 60 °C Humidity 5 % to 90 % non-Condensing | |
| Stand Base | Attached (<input type="checkbox"/>), Detached (<input type="checkbox"/>) | |
| Power cord | Wall-outlet type | |

NOTE

- Information in this document is subject to change without notice.

Preset Modes (Resolution)

■ E1950S

| Display Modes (Resolution) | | Horizontal Freq. (kHz) | Vertical Freq. (Hz) |
|----------------------------|------------|------------------------|---------------------|
| 1 | 720 x 400 | 31.468 | 70 |
| 2 | 640 x 480 | 31.469 | 60 |
| 3 | 640 x 480 | 37.500 | 75 |
| 4 | 800 x 600 | 37.879 | 60 |
| 5 | 800 x 600 | 46.875 | 75 |
| 6 | 832 x 624 | 49.725 | 75 |
| 7 | 1024 x 768 | 48.363 | 60 |
| 8 | 1024 x 768 | 60.123 | 75 |
| *9 | 1360 x 768 | 47.712 | 60 |

*Recommend Mode

■ E2050S

| Display Modes (Resolution) | | Horizontal Freq. (kHz) | Vertical Freq. (Hz) |
|----------------------------|------------|------------------------|---------------------|
| 1 | 720 x 400 | 31.468 | 70 |
| 2 | 640 x 480 | 31.469 | 60 |
| 3 | 640 x 480 | 37.500 | 75 |
| 4 | 800 x 600 | 37.879 | 60 |
| 5 | 800 x 600 | 46.875 | 75 |
| 6 | 1024 x 768 | 48.363 | 60 |
| 7 | 1024 x 768 | 60.123 | 75 |
| 8 | 1152 x 864 | 67.500 | 75 |
| *9 | 1600 x 900 | 60.000 | 60 |

*Recommend Mode

■ E2250S/E2350S

| Display Modes (Resolution) | | Horizontal Freq. (kHz) | Vertical Freq. (Hz) |
|----------------------------|-------------|------------------------|---------------------|
| 1 | 720 x 400 | 31.468 | 70 |
| 2 | 640 x 480 | 31.469 | 60 |
| 3 | 640 x 480 | 37.500 | 75 |
| 4 | 800 x 600 | 37.879 | 60 |
| 5 | 800 x 600 | 46.875 | 75 |
| 6 | 1024 x 768 | 48.363 | 60 |
| 7 | 1024 x 768 | 60.123 | 75 |
| 8 | 1152 x 864 | 67.500 | 75 |
| 9 | 1280 x 1024 | 63.981 | 60 |
| 10 | 1280 x 1024 | 79.976 | 75 |
| 11 | 1680 x 1050 | 65.290 | 60 |
| *12 | 1920 x 1080 | 67.500 | 60 |

*Recommend Mode

Indicator

| MODE | LED Color |
|------------|------------------------------|
| On Mode | Purple (front view) |
| Sleep Mode | Purple Blinking (front view) |
| Off Mode | Off |

Digitally yours ■■■■■.....

