

### **Part 15.21 statement**

" Change or Modifications that are not expressly approved by the manufacturer could void the user's authority to operate the equipment. "

### **Part 15.105 statement**

This equipment has been tested and found to comply with the limits for a class B digital device, pursuant to Part 15 of the FCC Rules. These limits are designed to provide reasonable protection against harmful interference in a residential installation. This equipment generates uses and can radiate radio frequency energy and, if not installed and used in accordance with the instructions, may cause harmful interference to radio communications. However, there is no guarantee that interference will not occur in a particular installation. if this equipment does cause harmful interference or television reception, which can be determined by turning the equipment off and on, the user is encouraged to try to correct the interference by one or more of the following measures:

- Reorient or relocate the receiving antenna.
- Increase the separation between the equipment and receiver.
- Connect the equipment into an outlet on a circuit different from that to which the receiver is connected.
- Consult the dealer or an experienced radio/TV technician for help.

## **Part 15 Class B Compliance**

This device and its accessories comply with part15 of FCC rules.

Operation is subject to the following two conditions:

- (1) This device & its accessories may not cause harmful interference.
- (2) This device & its accessories must accept any interference received,  
including interference that may cause undesired operation.

## **Body-worn Operation**

This USB modem has been tested for typical body-worn operations

with the distance of 0.79inches (2.0cm) from the user's body.

To comply with FCC RF exposure requirements, a minimum separation distance  
of 0.79inches(2.05cm) must be maintained from the user's body.



P/N: MMBBSAMPLE (1.0)

# GS155a User Guide - English

This guide will help you understand your new mobile phone. It will provide you with useful explanations of features on your phone. Some of the contents in this manual may differ from your phone depending on the software of the phone or your service provider.

## Disposal of your old appliance

- 1 When this crossed-out wheeled bin symbol is attached to a product it means the product is covered by the European Directive 2002/96/EC.
- 2 All electrical and electronic products should be disposed of separately from the municipal waste stream via designated collection facilities appointed by the government or the local authorities.
- 3 The correct disposal of your old appliance will help prevent potential negative consequences for the environment and human health.
- 4 For more detailed information about disposal of your old appliance, please contact your city office, waste disposal service or the shop where you purchased the product.

## Installing the SIM Card and Charging the Battery

### Installing the SIM Card

When you subscribe to a cellular network, you are provided with a plug-in SIM card loaded with your subscription details, such as your PIN, any optional services available and many others.

- Important!** The plug-in SIM card and its contacts can be easily damaged by scratches or bending, so be careful when handling, inserting or removing the card. Keep all SIM cards out of the reach of small children.
- › SIM is not supported in a phone.
  - › only 2G/2.5G SIM supported

### Illustrations

- 1 Open battery cover
- 2 Remove the battery
- 3 Insert your SIM
- 4 Close the battery cover
- 5 Charge your battery

**WARNING:** Do not remove the battery when the phone is switched on, as this may damage the phone.

## Changing the call settings

You can set the menu relevant to a call. Press **Menu**, select **Settings** and choose **Call**.

- **Call barring** – Select when you would like calls to be barred.
- **Fixed dial number** – Choose a list of numbers that can be called from your phone. You'll need your PIN2 code from your operator. Only numbers included in the fixed dial list can be called from your phone.

## Contacts

### Searching for a contact

You can search for a contact in your contacts.

- 1 Press **Contacts** and choose **Search**, select **Contacts** from the **Menu** screen or press from the standby screen.
- 2 Using the keypad enter the first letter of the contact you want to call. For example, for Office, press 6 three times.
- 3 To scroll through the contacts and their different numbers use and .

## Messaging

Your GS155a includes functions related to SMS (Short Message Service), MMS (Multimedia Message Service) and Bluetooth, as well as the network's service messages.

## MP3 Player

Your LG GS155a has a built-in MP3 player so you can play all your favourite music.

### Playing a song

- 1 Press **Menu** and select **Multimedia**, then choose **MP3 Player**.
- 2 Choose **All songs** then select the song you want to play. Press OK key.
- 3 While music is playing () , press OK key to pause the song.
- 4 Press to skip to the next song.
- 5 Press to skip to the previous song.
- 6 While music is playing () , press OK key and select to stop the music and return to the MP3 player menu.

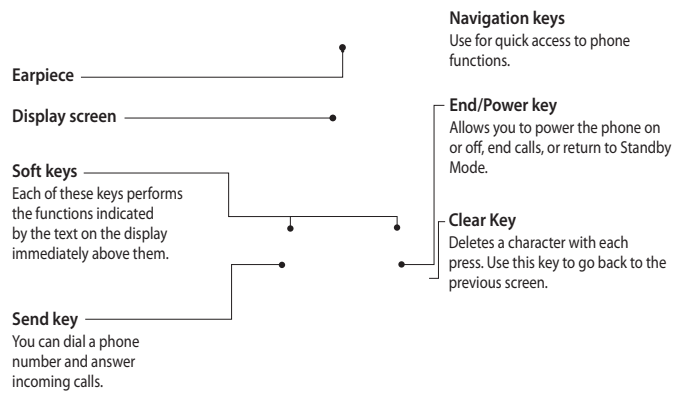
## FM radio

When can't find FM channel or low channel clarity is happening, use ear-mic .

Your LG GS155a has an FM radio feature so you can tune into your favourite stations to listen on the move.

**Note:** You will need to insert your headset in order to listen to the radio. Insert the plug into the headset socket (this is the same socket that you plug your charger into).

## Getting to know your phone



## Menu map

<b>Games</b> 1 Space ball	<b>Call history</b> 1 All calls 2 Missed calls 3 Dialed calls 4 Received calls 5 Call duration	<b>Organiser</b> 1 Alarm 2 Calendar 3 Memo	<b>Media</b> 1 Camera 2 MP3 player 3 FM radio	<b>Messaging</b> 1 New message 2 Inbox 3 Drafts 4 Outbox 5 Sent 6 Listen to voicemail 7 Info messages 8 Templates 9 Settings	<b>My stuff</b> 1 Images 2 Sounds 3 Others
<b>Profiles</b> 1 General 2 Silent 3 Vibrate only 4 Outdoor 5 Headset	<b>Contacts</b> 1 Search 2 New contact 3 Speed dials 4 Groups 5 Copy all 6 Delete all 7 Memory status 8 Information	<b>Tools</b> 1 Torch 2 Calculator 3 Stopwatch 4 Unit converter 5 World clock	<b>Browser</b> 1 Home 2 Bookmarks 3 Enter address 4 History 5 Saved pages 6 Settings 7 Information	<b>Connectivity</b> 1 Bluetooth 2 Network 3 USB connection	<b>Settings</b> 1 Profile 2 Date & Time 3 Languages 4 Display 5 Fake call 6 Call 7 Auto keylock 8 Security 9 USB connection 0 Network selection * Reset settings # Memory status

## Sending a message

- 1 Press **Menu**, select **Messaging** and choose **New message**.
- 2 Choose **Message** to send an SMS or MMS.
- 3 A new message editor will open. Message editor combines SMS and MMS into one intuitive and easy to switch between SMS mode and MMS mode. The default setting of the message editor is SMS mode.
- 4 Enter your message using either the T9 predictive mode or Abc manual mode. You can switch text input mode by pressing .
- TIP!** You can select your message type as SMS or MMS when you enter a text longer than 2 pages in the message field.
- 5 Press **Options** and choose **Insert** to add a **Symbol**, **Text template**, **Emoticon**, **Name&Number**.
- 6 Press **Send to**.
- 7 Enter the phone number or press **Options** and select **Contacts** or **Recent list** to open your contacts list. You can add multiple contacts.
- 8 Press **Send**.

### Entering text

You can enter alphanumeric characters using the phone's keypad. For example, storing names in Contacts, writing a message and creating scheduling events in the calendar all require entering text. The following text input methods are available in the phone: T9 predictive mode, ABC manual mode and 123 mode.

**Note:** Some fields may allow only one text input mode (e.g. telephone number in address book fields).

## Listening to the radio

- 1 Press **Menu** and select **Multimedia**, then choose **FM radio**.
- 2 Select the channel number of the station you would like to listen to.

**Note:** You can listen to the radio via built-in speaker. Press **Options**, select **Listen via** and choose **Speaker**.

## My stuff

You can store any multimedia files into your phone's memory so that you have easy access to all of your images, sounds, videos, others and games. You can also save your files to a memory card. The advantage of using a memory card is that you can free up space on your phone's memory. All your multimedia files will be saved in **My stuff**. Press **Menu** then select **My stuff** to open a list of folders.

## Games

Your GS155a comes with preloaded games to keep you amused when you have time to spare. If you choose to download any additional games or applications they will be saved into this folder. Press **Menu** and select **Games**.

## Organiser / Tools

**Using the calendar** ( Menu > Organiser > Calendar )

When you enter this menu, a calendar appears. A square cursor is located on the current date. You can move the cursor to another date using the navigation keys.

## Installing a memory card

Slide the memory card into the slot at the top. Make sure that the gold contact area is facing downwards. The GS155a will support a memory card of up to 2 GB.

**Removing a memory card:** gently push it as shown in the diagram.

## Formatting the memory card

Press **Menu** and select **Settings**.

Choose **Memory status**, select **External memory** and press **Format**.

**WARNING:** When you format your memory card, all the content will be wiped. If you do not want to lose the data on your memory card, back it up first.

## Calls

### Making a call

- 1 Key in the number using the keypad. To delete a digit press .
- 2 Press to initiate the call.
- 3 To end the call, press .

**TIP!** To enter + when making an international call, press and hold 0.

### Making a call from your contacts

- 1 Press to open the address book.
- 2 Using the keypad, enter the first letter of the contact you want to call. For example, for Office, press 6 three times.
- 3 To scroll through the contacts and their different numbers use and .
- 4 Press to initiate the call.

### Answering and rejecting a call

When your phone rings, press **Accept** or press to answer the call. While your phone is ringing, select **Silent** to mute the ringing. This is great if you have forgotten to change your profile to **Silent** for a meeting.

Press or **Reject** to reject the incoming call.

**TIP!** You can change the settings on your phone to answer your calls in different ways. Press **Menu**, select **Settings** and choose **Call**. Select **Answer mode** and choose from **Any key** or **send key only**.

## T9 predictive mode

T9 predictive mode uses a built-in dictionary to recognise words you're writing based on the key sequences you press. Simply press the number key associated with the letter you want to enter, and the dictionary will recognise the word once all the letters are entered.

## ABC manual mode

This mode allows you to enter letters by pressing the key labeled with the required letter once, twice, three or four times until the letter is displayed.

## 123 mode

Type numbers using one keystroke per number. You can also add numbers while remaining in letter modes by pressing and holding the desired key.

## Camera

### Taking a quick photo

Using the camera module built in your phone, you can take pictures of people. Additionally, you can send photos to other people and select photos as wallpaper.

- 1 Press **Menu** and select **Multimedia**, select **Camera** to open the viewfinder.
- 2 Holding the phone vertically, point the lens towards the subject of the photo.
- 3 Press the centre soft key to take a photo.

### Adding a memo ( Menu > Organiser > Memo )

You can register your own memos here.

### Setting your alarm ( Menu > Organiser > Alarm )

You can set up to 5 alarm clocks to go off at a specified time.

### Using your calculator ( Menu > Tools > Calculator )

The calculator provides the basic arithmetic functions: addition, subtraction, multiplication and division.

### Using the stopwatch ( Menu > Tools > Stopwatch )

This option allows you to use the function of a stopwatch.

### Converting a unit ( Menu > Tools > Unit converter )

This converts many measurements into a unit you want.

### Adding a city to your world clock ( Menu > Tools > World clock )

You can check the current time of Greenwich Mean Time (GMT) and major cities around the world.

### SIM services ( Menu > Tools > SIM services )

This feature depends on SIM and the network services. In case the SIM card supports SAT (i.e. SIM Application Toolkit) services, this menu will be the operator specific service name stored on the SIM card.

