

ユーザー名(ID) ID supplied from service provider
パスワード(Password) The password supplied from service provider

ダイヤル(Service number) number of service provider
※ For packet communication, enter *99***<cid>. Enter the registration number of APN set in <cid>(P72).


SMSセンター番号(SMS center number)
※ Normally, change in setting is not necessary. Enter SMS center number when using SMS from the network operator other than DOCOMO.

 **設定(Configuration)** Click to change setting

 **基本設定リセット(Basic setting reset)**
Click to return to basic setting

3 Click the applicable

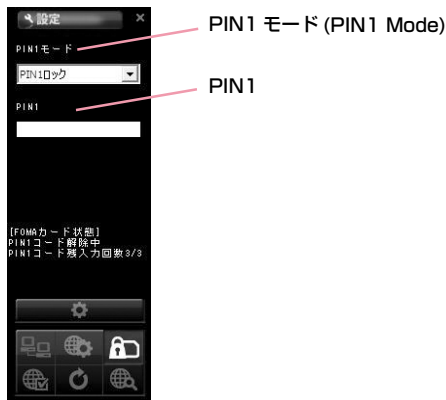
Note

- Click  "設定(Configuration)" to renew the setting. Always remember to click when setting is changed.
- You will not connect to Internet if ID, password and service number are incorrect.
- SMS may not be sent or received when SMS service number has been improperly entered.
- In Macintosh, input any character in user name and password.

Configuring FOMA Card

- Allows you to configure "PIN1ロック(PIN1 lock)", "PIN1解除(PIN1 unblocking)", "PIN1暗証番号変更(PIN1 code change)"

1 Click from the application option



Locking PIN1

- Set security to FOMA card.

- 1 Select "PIN1ロック(PIN1 locking)" from PIN1 mode
- 2 Enter the PIN1 code configured in FOMA card to "PIN1"



- 3 Click 
- 4 Click 



Note

- When starting L-05A connection software with PIN1 locked, you need to enter PIN1 code from the screen of entering PIN1 code. You can not use FOMA terminal properly unless you enter correct PIN1 code.

Unlocking PIN1

- 1 Select "PIN1解除(Unlocking PIN1)" from PIN mode
- 2 Enter the PIN1 code configured in FOMA card to "PIN1"



- 3 Click 
- 4 Click 



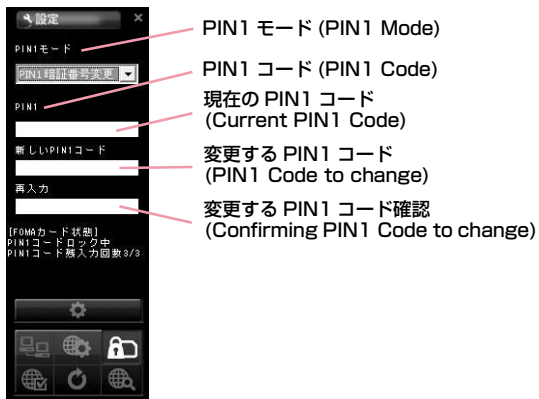
Note

- If PIN1 unlocking code is set, you can use FOMA card information from FOMA terminal without verifying PIN1 code.

Modifying PIN1 Code

- Set the password required when unlocking or locking PIN1.
- Changing PIN1 code is only available when PIN is locked.

1 Select "PIN1 暗証番号変更 (Changing password of PIN1)" from PIN1 mode



- 2 Enter the FOMA card PIN1 code to "PIN1"
- 3 Enter the PIN1 code change in "新しいPIN1コード(New PIN1 code)"

4 Enter the PIN1 code entered in "新しいPIN1コード (New PIN1 code)" code in "再入力 (Confirming New PIN1 code)" again to verify

5 Click

6 Click



Entering PIN1 Code

- When L-05A connection software is started after setting PIN1 Lock, PIN1 code input screen will appear or it is restart to reset FOMA terminal.

1 Enter PIN1 code

Enter the 4 to 8 PIN1 code



2 Verify the result after entering PIN1 code

Ex.1 : When PIN1 code has been successfully entered.



Ex.2 : When PIN1 code has been improperly entered.




Ex.3 : When PIN1 code has been improperly entered 3 times in a row.

- If you improperly enter the PIN1 code 3 times in a row, the verification screen for unblocking PIN1 code will be displayed.



■ Unlocking locked PIN1 code

- Enter the unblocking PIN1 code to "PIN1ロック解除コード (Unblock)"
- Enter the PIN1 code to "新しいPIN1コード(New PIN1 code)" to change
- Enter the PIN1 entered in "新しいPIN1コード(New PIN1 code)" in "再入力(confirming New PIN1 code)" to confirm
- Click 

Caution

- Be careful not to lose FOMA card. DOCOMO is not responsible for the lost or stolen device.
- Do not transfer FOMA card to others.
- Treat it carefully as the data stored in FOMA card can be easily damaged from scratching or bending.
- When connecting FOMA terminal to a PC for the first time, you are required to enter PIN1 code to use FOMA card.
- If an incorrect PIN1 code is entered 3 times in a row, the service will be suspended. To use it again, you must enter unblocking PIN1 code.
- If an incorrect unblocking PIN1 code is entered 10 times in a row, FOMA card locks automatically, so be sure to keep a separate note of the number. Contact a DOCOMO shop if you are not able to unblock the locked PIN 1.

Configuring Connection type (PDP Type)

- Configure connection type.

1 Click  from Internet Option screen

2 Start the following operations



1 登録番号 (Registration number (cid))

2 接続方式 (Connection type)

3 接続先 (Access Point Name (APN))

4 接続方式登録
(Connection type registration)



5 接続方式設定リセット
(Connection type setting reset)

1 登録番号 (Registration Number (cid))

The registration numbers are available from cid1 to cid10 in FOMA terminal. To connect to a provider other than 「mopera U」 or 「mopera」, you can set the access point name (APN) to any of cid2 or cid4 to cid10.

2 接続方式 (Connection type)

PDP type IP and PDP type PPP are available for Internet connection type. You can select the Internet connection type you want to use or check the currently configured internet connection type.

- 3 接続先(Access Point Name (APN))
Configure APN for packet communication. You can configure APN of provider you want to use or check the currently configured APN.
- 4  (Connection type registration)
Save the modified information to FOMA terminal.
- 5  (Connection type setting reset)
Reset all PDP configurations.

Saving and Editing the Provider Information

- Save or edit the provider information you want to use.

1 Select cid▶Select the registration number to save/edit



■ cid

- The registration numbers are available from cid1 to cid 10 in FOMA terminal.
- To connect to a provider other than 「mopera U」 or 「mopera」, you can set the access point name (APN) to any of cid2 or cid4 to cid10.

Registration number (cid)	Access Point name (APN)
1	mopera.ne.jp 「mopera」
2	Unassigned
3	mopera.net 「mopera U」
4~10	Unassigned

2 Select the Internet connection type supporting Access Point.



3 Enter APN

- When "cid=3" selected "PDP type IP" Configure mopera.net
This service provides a maximum data speed of 7.2Mbps for receiving and 5.7Mbps for sending.
- When "cid=1" selected "PDP type PPP" onfigure mopera.ne.jp This service provides a maximum data speed of 384kbps for receiving and 384kbps for sending.

Note

■ Configuring sender ID

You can configure to display sender ID or not by adding 186/184 before APN.

- Add "186." before APN if you want to display sender ID.
- Add "184." before APN if you don't want to display sender.

Registration	APN
Display sender ID	186.mopera.net
Not display Sender ID	184.mopera.net

4 Click Click



Retrieving Provider Information

① If select the cid of the "登録番号(Registration Number(cid))" ② "接続方式(connection type)" and ③ "接続先(Access Point Name (APN))" will be displayed.

Resetting FOMA Terminal

- Allows you to reset FOMA terminal.

1 Click from the application option



FOMA 端末リセット
(FOMA terminal reset)

■ FOMA端末リセット(FOMA terminal reset)

Reset FOMA terminal for the following cases

- When FOMA terminal is operating improperly.
- When FOMA card is reinserted while inserting the FOMA terminal to a PC.

2 Click

- FOMA terminal is restarting.



DOCOMO Connection Manager

DOCOMO Connection Manager	78
Windows Version	79
Macintosh Version	83

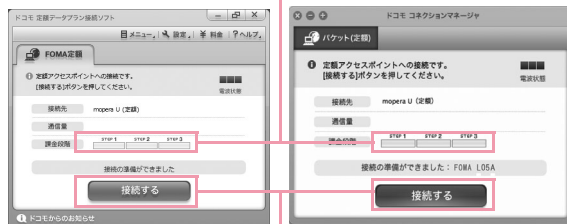
DOCOMO Connection Manager

DOCOMO connection manager is a software packets the necessary connection software to operate "定額データプラン接続ソフト (Flat-rate data plan connection software)" and measured data communication which are necessary when using flat-rate data plan.

[DOCOMO connection manager] is a software to connect data communication terminal by data communication corresponding terminal. Subscribing [mopera U] or configuring a PC operates easily.

Also, confirming amount of data communication and charges through charge counter feature is available.

Charge counter



Windows version

Macintosh version

Connect/disconnect

This manual introduces the installation method of DOCOMO connection manager.

For connecting the terminal with Internet, agreement with the Internet service provider ([mopera U] etc.) supporting service and data communication is required.

View DOCOMO web site for detailed information (Japanese only).

Note

■ Using a flat-rate data plan

- For using a flat-rate data plan, the agreement with the charge plan corresponding to the flat-rate data communication and internet service provider is required. View DOCOMO web site for further information.

■ Using measured-rate data communication

- Note that the communication fees may come high if you perform heavy packet communications such as viewing home page with pictures inside, downloading data (Ex. : Application/Music/Data/OS/anti-virus software update) etc.

Note that when performing data communication after connecting this FOMA terminal with a PC by a USB cable, 「パケ・ホーダイ (Pake-hodai)」、 「パケ・ホーダイフル (Pake-hodaiful)」、 「Biz・ホーダイ (Biz-hodai)」 and 「Biz・ホーダイダブル (Biz-hodai double)」 are not included in the FOMA packet Flat-rate service.

■ Using mopera

- For connection configuration, view mopera web site. <http://www.mopera.net/mopera/support/index.html> (Japanese only)

Windows Version

Before Installing DOCOMO Connection Manager

■ Setting Internet Explorer

Before installing this software, set connection setting to "ダイヤルしない (Do not dial)" in Internet Option of Internet Explorer.



- 1 Start Internet Explorer▶Select "ツール (Tool)"-"インターネットオプション (Internet Option)"
- 2 Select "接続 (Connection)" tab▶Select "ダイヤルしない (Do not dial)"
- 3 Click "OK"

Note

■ Use other connection software besides DOCOMO connection manager

This software has equate features with the following software. Therefore, it is not necessary to use the following software at the same time.

- ※ If required, change the setting to not start or uninstall.
 - mopera U start up tools
 - mopera U connection & setting tool
 - FOMA PC configuration software
 - FOMA byte counter

Also, when using Mzone (Public Wireless LAN Connection) in this software, uninstall the following public wireless LAN connection software.

- ※ When the following software are installed at the same time, the Mzone connection of this software is not available.
 - U Public Wireless LAN Utility Software
 - DOCOMO Public Wireless LAN Utility Software
 - DOCOMO Public Wireless LAN Utility Program

1 Log on by DOCOMO connection manager user

■ For Windows Vista

An administrator is required. When logged on by other people than the administrator, entering user name and password will be asked.

■ For Windows XP/2000

The user belongs to administrators group or the user of "コンピュータの管理者 (Administrator of computer)" operates log-on.

2 Exiting all the applications launched

Besides anti-virus software, programs resident in Windows are also finished.

- Ex: Right click the icon shown on task bar, and select "閉じる (Close)" or "終了 (Finish)".

Installing DOCOMO Connection Manager

1 Launch the installer of DOCOMO connection manager using the included CD-ROM

Select "付属CD-ROM (the included CD-ROM)" ▶ "Windows" ▶ "dcm_connect_manager" ▶ "dcm_connect_full_setup.exe"

Note

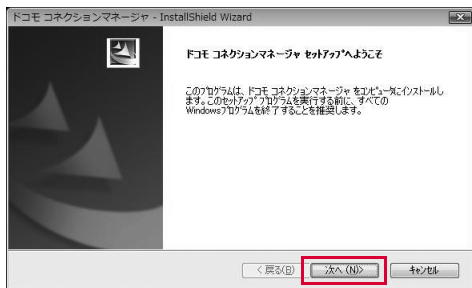
- When Windows XP does not contain MSXML6 and Wireless LAN API, installation is required before installing DOCOMO connection manager. Press "Install" when the confirmation screen is displayed.
- After finishing installing MSXML6 and Wireless LAN API, if reboot Windows, the installation of DOCOMO connection manager starts automatically.

2 Click "続行 (Continue)"

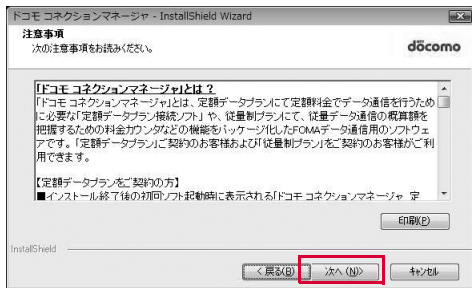
For Windows XP/2000, "ユーザーアカウント制御 (User account control)" screen is not displayed. Setup program starts right away.



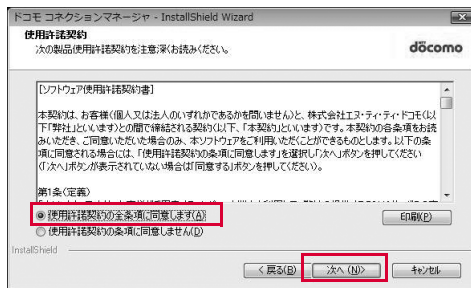
3 Click "次へ (Next)"



4 Make sure to confirm the caution and then click "次へ (Next)"



5 Confirm the content of the license agreement. When agree with the content, select "使用許諾契約の全条項に同意します (I agree with the license agreement stipulations)" and click "次へ (Next)"

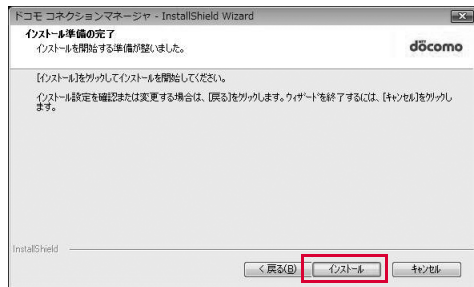


6 Confirm the destination folder and click "次へ (Next)"



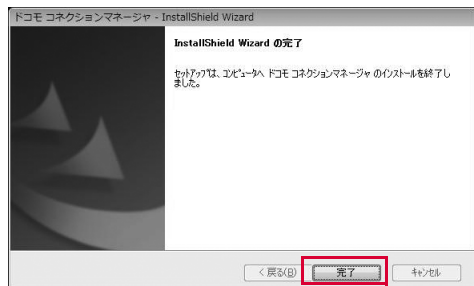
7 Click "インストール (Install)"

Installing starts.



8 Click "完了 (Finish)"

Installing finishes.



Launching DOCOMO Connection Manager

- 1 "スタート (Start)"▶"すべてのプログラム (All programs)"▶"NTT DOCOMO"▶"ドコモ コネクションマネージャ (DOCOMO connection manager)"▶"ドコモ コネクションマネージャ (DOCOMO connection manager)"

DOCOMO connection manager starts.

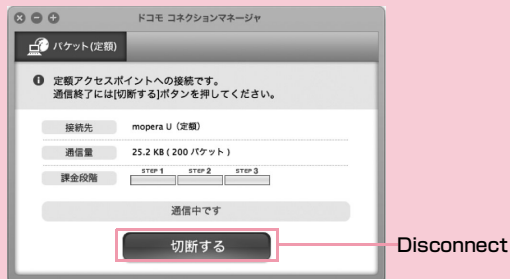
- 2 For the first launching, the wizard setting is displayed automatically.

The connection with Internet gets prepared when operating or setting following the instruction of software. Refer to 『ドコモ コネクションマネージャ操作マニュアル (DOCOMO connection manager operation manual).pdf』 for detailed information.



Note

- Just exiting the Internet browser or mail software does not disconnect the connection. When do not use communication, make sure to press "切断する (Disconnect)" button to disconnect the connection.
For OS update, if auto update is set, the software will be updated automatically. Note that the packet communication fee may come high.



Macintosh Version

Installing DOCOMO Connection Manager

Note

- Use Ver. 1.00.0003 or later for "DOCOMO connection manager for Mac".

1 Launch the installer of DOCOMO connection manager from the included CD-ROM

- Select "付属CD-ROM (included CD-ROM)" ▶ "Mac" ▶ "dcm_connect_manager" ▶ "dcm_for_Mac" ▶ "インストール (Install)" ▶ Select "ドコモ コネクションマネージャをインストールします (Install DOCOMO connection manager)" and click "OK"

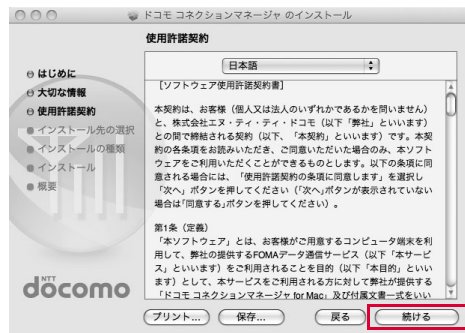
2 Click "続ける (Continue)"



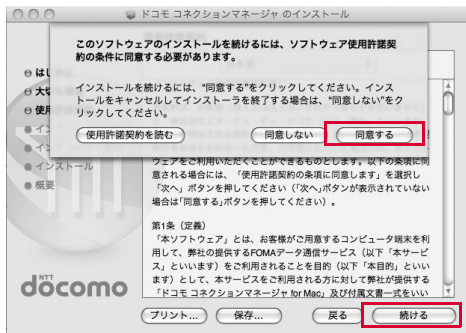
3 Make sure to confirm "大切な情報 (Important information)", and click "続ける (Continue)"



4 Click "続ける (Continue)"



- 5 Confirm "使用許諾契約 (The license agreement)", when agree with the content, click "同意する (I Agree)"▶Click "続行 (Continue)"



- 6 Confirming the destination folder to install and click "インストール (Install)"



- 7 Enter administrator name and password▶Click "OK"

The user account created after Mac OS X is set becomes the administrator of PC. Enter the used name and password.



8 Click "インストールを続ける (Continue installing)"



9 Click "ログアウト (Log out)"

Installing finishes.



Note

- If click "ログアウト (Log out)", setting assistant screen is displayed.
The connection with Internet gets prepared when operating or setting following the instruction of software.
Refer to 『ドコモ コネクションマネージャ操作マニュアル (DOCOMO connection manager operation manual)』 for detailed information.

Launching DOCOMO Connection Manager

1 "アプリケーション (Application)" ▶ "ドコモ コネクションマネージャ (DOCOMO connection manager)" ▶ "ドコモ コネクションマネージャ (DOCOMO connection manager)"

- DOCOMO connection manager starts.

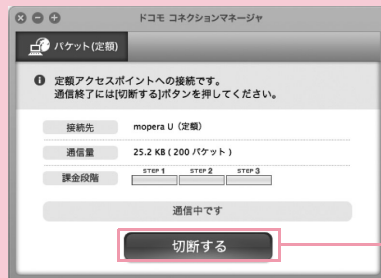
2 For the first launching, the wizard setting is displayed automatically

The connection with Internet gets prepared when operating or setting following the instruction of software. Refer to 『ドコモ コネクションマネージャ操作マニュアル (DOCOMO connection manager operation manual.pdf)』 for detailed information.



Note

- Just exiting the Internet browser or mail software does not disconnect the connection. When do not use communication, make sure to press "切断する (Disconnect)" button to disconnect the connection. For OS update, if auto update is set, the software will be updated automatically. Note that the packet communication fee may come high.



Configuring Network Manually

Configuring a Dial-up Network Manually	90
Communicating (Connecting by Dial-up)	109

Configuring a Dial-up Network Manually

This section describes the steps to configure settings for packet communication without using L-05A connection software or DOCOMO connection manager.

Setting APN

Set the access point (APN) in packet communication. Up to 10 APN can be set up and they are managed with cid's. Communication software is required to enter AT commands. This section describes the steps necessary for using the "ハイパーターミナル(Hyper Terminal)" that comes with Windows.

- The registration number (cid) 1 is set to mopera.ne.jp and the registration number 3 is set to mopera.net by default. Use cid 2 or from 4 to 10 when setting another access point.
- "ハイパーターミナル(Hyper Terminal)" does not come with Windows Vista. To configure the settings in Windows Vista, use communication software compatible with Windows Vista. For the setting procedures, refer to the instruction manual and other documentation that came with the software to be used.
- For a connection (APN) other than 「mopera U」 or 「mopera」, contact your ISP or network administrator.

For Windows XP

- 1 Connect the FOMA terminal with a PC
 - Connecting method→P24
- 2 Click "スタート(Start)" ▶ "すべてのプログラム (All programs)" ▶ "アクセサリ (Accessories)" ▶ "通信(Communication)" ▶ "ハイパーターミナル (Hyper Terminal)"
Hyper Terminal starts.
 - For Windows 2000
Click "スタート(Start)" ▶ "プログラム (Programs)" ▶ "アクセサリ(Accessories)" ▶ "通信(Communication)" ▶ "ハイパーターミナル(Hyper Terminal)".
- 3 Enter a connection name in the "名前 (Name)" field ▶ Click "OK"



4 Enter a non-existing phone number (such as "0") in the "電話番号(Phone Number)" field ▶ Check that "FOMA L05A" is displayed for "接続方法(Connection Method)" ▶ Click "OK"

- If more than one modem name are displayed in the "接続方法(Connection Method)" field, check the FOMA terminal modem name and select the proper one.→P40



5 Click "キャンセル(Cancel)" on the connection screen

The Hyper Terminal screen opens.



6 Enter the APN in the following format▶Press

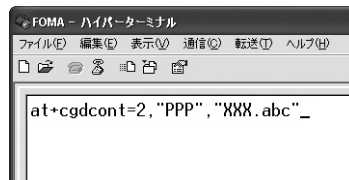
Enter AT+CGDCONT=<cid>,<PDP type>,<APN>
Enter the following information in the corresponding <cid>, <PDP type> and <APN> sections.
If "OK" appears after you enter the information, the APN has been setup.

cid : Enter any number from 2, and from 4 to 10.
※ Keep in mind that the old setting information will be overwritten if you select a cid number which has already been set.

PDP type : Select either PPP or IP for the connection method supported by the access point, and then enter the information enclosed in quotation marks ("").

APN : Enter the connection (APN) enclose it in quotation marks " ".

- If the entered characters do not appear, enter ATE1.



If register an access point with PPP in the PDP type and XXX.com in the APN of cid2

■ **To reset the specified APN settings**

Enter AT+CGDCONT=<cid>

■ **To view the registered APN**

Enter AT+CGDCONT

7 Check if "OK" is displayed



8 Click "ファイル(File)" ▶ "ハイパーターミナルの終了(Exit Hyper Terminal)"

9 Click "はい(Yes)" on the confirming disconnection screen ▶ Click "いいえ(No)" on the confirming to save screen

Hyper Terminal will quit, and the setting of the APN completes.

Note

- The APN information is saved in the FOMA terminal. If you connect a different FOMA terminal, save the APN information again.
- If you want to use the APN information registered on the PC, register the same APN in the same cid of the FOMA terminal.


Configuring Dial-up Network

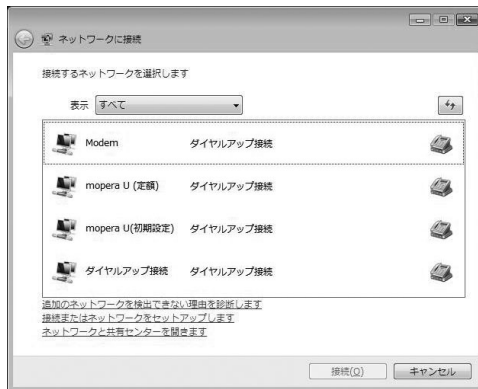
Set up the dial-up network on the PC.

- For setting up a connection to other than 「mopera U」 or 「mopera」, contact your ISP or network administrator.

Example: Connecting to the DOCOMO Internet connection service 「mopera U」, which is registered to <cid>=3

For Windows Vista

- 1 Click  "スタート(Start)" ▶ "接続先(Connection)"
- 2 Click "接続またはネットワークをセットアップします(Set up connection or network)"



- 3** Select "ダイヤルアップ接続をセットアップします (Set up dial-up connection)" ► Click "次へ (Next)"



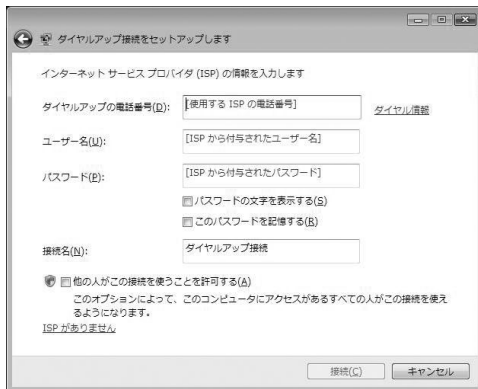
- 4** When the modem selection screen appears, click "FOMA L05A"

The modem selection screen opens only when the PC has more than one modem.



5 Configure various settings, then click "接続 (Connect)"

- Enter the APN number in the "ダイヤルアップの電話番号 (Phone number to a dial-up connection)".
- Enter the user name and password specified by your ISP or network administrator in the "ユーザー名(User name)" and "パスワード(Password)" fields.
- You can leave the user name and password fields unfilled when connecting to 「mopera U」 / 「mopera」.
- Enter a connection name in the "接続名 (Connection Name)" field.



6 Click "スキップ(Skip)" on the "(接続名)に接続中..." (Connecting to (APN))" screen


The connection test will not be performed. Only the settings will be checked.

- If you do not click "スキップ(Skip)", the connection to the Internet will be established.



- 7 Click "接続をセットアップします (Set up the connection)" ► "閉じる (Close)"



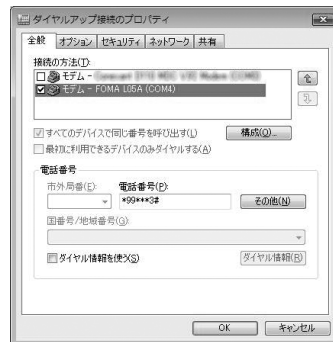
- 8 Click  "スタート (Start)" ► "接続先 (Connection)"

- 9 Select the created dial-up connection icon ► Right click "プロパティ (Properties)"

- 10 Check the settings on the "全般 (General)" tab window

If two or more modems are connected to a PC, enable only "モデム - FOMA L05A (Modem - FOMA L05A)" in the "接続方法 (Connection Method)" field.

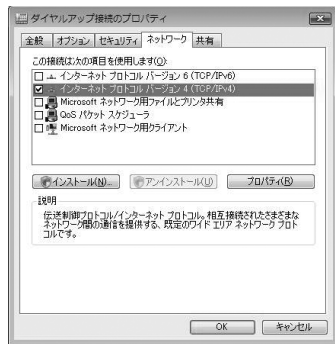
- Disable "ダイヤル情報を使う (Use dialing information)".



11 Click "ネットワーク(Networking)" tab ► Configure each setting

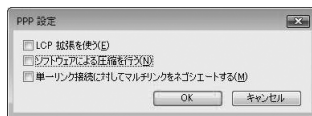
Place a checkmark next to the "インターネットプロトコルバージョン4 (TCP/IPv4) (Internet Protocol 4 (TCP/IPv4))" checkbox in the "この接続は次の項目を使用します(This connection uses the following items)" field. Obtain the settings for "QoS/パケットスケジューラ(QoS Packet Scheduler)" from your ISP or network administrator.

- To set up TCP/IP, click "プロパティ (Properties)". Contact your ISP or network administrator for setting up.



12 Click the "オプション(OPTION)" tab ► Click "PPP設定(PPP Settings)"

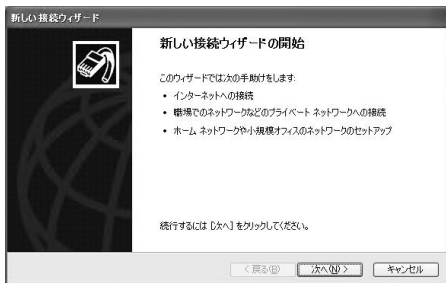
13 Remove checkmarks from all items ► Click "OK"



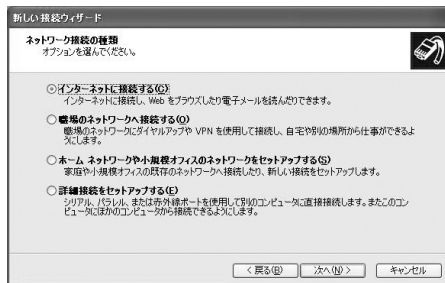
14 On the "オプション(OPTION)" tab window, click "OK"

1 Click "スタート(Start)" ▶ "すべてのプログラム (All programs)" ▶ "アクセサリ (Accessories)" ▶ "通信 (Communication)" ▶ "新しい接続ウィザード (New Connection Wizard)"

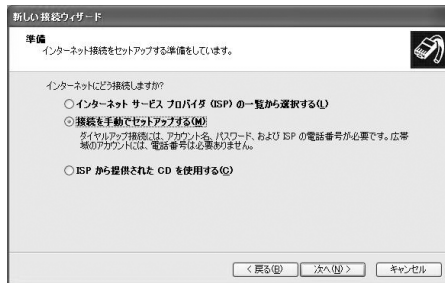
2 On the New connection wizard screen, click "次へ (Next)"



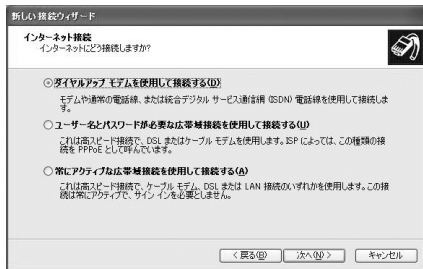
3 Select "インターネットに接続する (Connect to the Internet)" ▶ Click "次へ (Next)"



4 Select "接続を手動でセットアップする (Set up the connection manually)" ▶ Click "次へ (Next)"

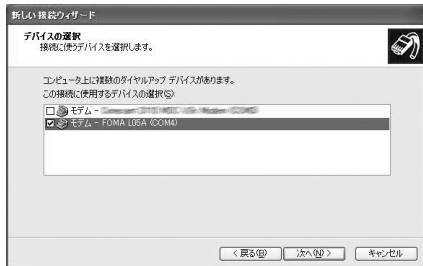


- 5 Select "ダイヤルアップモデムを使用して接続する (Use a dial-up modem to connect)" ▶ Click "次へ (Next)"

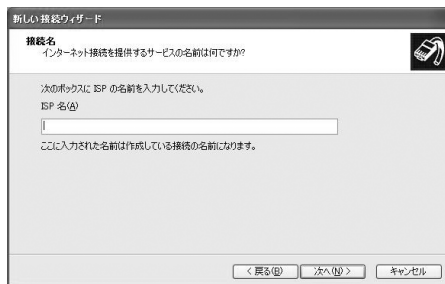


- 6 If "デバイスの選択 (Select a device)" screen appears, check in "モデム - FOMA L05A (COM4) (Modem - FOMA L05A (COM4))" checkbox ▶ Click "次へ (Next)"

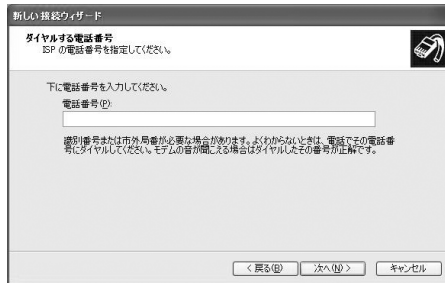
The "デバイスの選択 (Select a device)" screen appears only when the PC has more than one modem.



- 7 Enter a name in the "ISP名 (ISP Name)" field ▶ Click "次へ (Next)"



- 8 Enter the APN phone number in the "電話番号 (Phone Number)" field ▶ Click "次へ (Next)"



- For packet communication
Enter "*99**<cid>#". Enter the registered number of APN in <cid>. (P73)

9 Select the connection usage range ▶ Click "次へ(Next)"

Select a user.

- Depending on the PC settings, this screen may not appear.

10 Fill in the "ユーザー名(User Name)", "パスワード(Password)", and "パスワードの確認入力(Confirm password)" fields ▶ Click "次へ(Next)"

Enter the information provided by your ISP or network administrator.

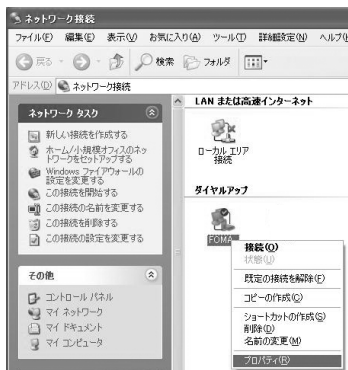
- Enter "ユーザー名(User name)" and "パスワード(Password)" correctly according to the instruction from the provider. Pay attention to the capital characters.
- To connect to 「mopera U」 or 「mopera」, these fields can be left unfilled.

11 Click "完了(Finish)"

The new connection wizard appears.

12 Click "スタート(Start)" ▶ "すべてのプログラム(All programs)" ▶ "アクセサリ(Accessories)" ▶ "通信(Communication)" ▶ "ネットワーク接続(Network Connection)"

13 Select the created dial-up connection icon ► Right click ► Click "プロパティ (Properties)"



14 Check the settings on the "全般 (General)" tab window

- If more than one modem is connected to a PC, enable only "モデム - FOMA L05A (COM4) (Modem - FOMA L05A (COM4))" in the "接続方法 (Connection Method)" field.
- Disable "ダイヤル情報を使う (Use dialing information)".



15 Click the "ネットワーク(Networking)" tab▶Confirm each item▶Click "設定(Settings)"

- Select "PPP:Windows 95/98/NT4/2000, Internet" in the "呼び出すダイヤルアップサーバーの種類(Dial-up server type to call)" field
- Enable "インターネットプロトコル(Internet Protocol) (TCP/IP)" in the "この接続は次の項目を使用します(This connection uses the following items)" field. You cannot change the settings of "QoSパケットスケジューラ (QoS Packet Scheduler)". Use it as usual.
- When connecting to provider, to confirm the TCP/IP setting contact the provider or network administrator.



16 Click "設定(Settings)"

17 Remove checkmarks from all items ▶ Click "OK"

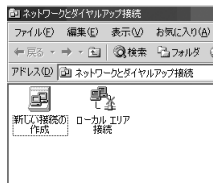


18 click "OK" on the "ネットワーク(Networking)" tab window

For Windows 2000

1 Click "スタート(Start)" ▶ "プログラム(Programs)" ▶ "アクセサリ(Accessories)" ▶ "通信(Communication)" ▶ "ネットワークとダイヤルアップ接続(Network and Dialup Connections)"

2 On the Network and Dial-up connection screen, double-click the "新しい接続の作成(Create new connection)" icon

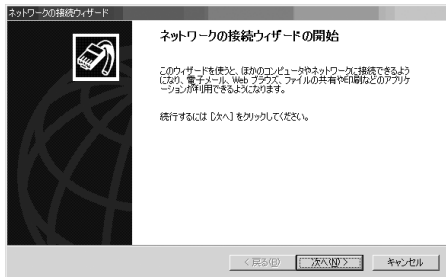


3 If the location information screen appears, enter "市外局番(City code)" ► Click "OK"

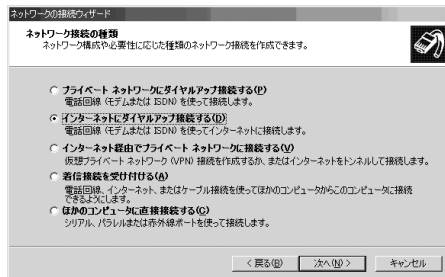
This appears only when "新しい接続の作成 (Create new connection)" is launched for the first time. Go to Step 5 when launching this for the second time or later.

4 On the phone and modem option screen, click "OK"

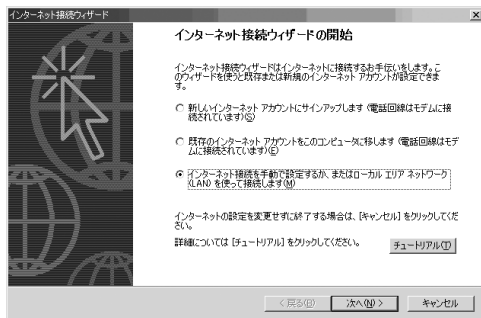
5 On the Network connection wizard screen, click "次へ(NEXT)"



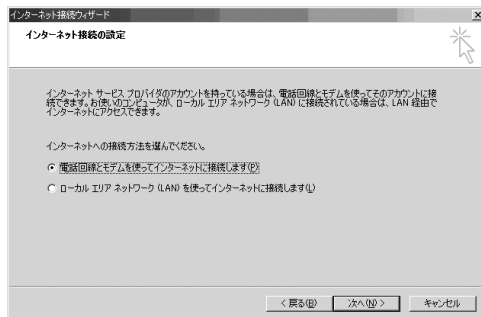
6 Select "インターネットにダイヤルアップ接続する (Connect to Internet via dial-up)" ► Click "次へ(NEXT)"



- 7** Select "インターネット接続を手動で設定するか、またはローカルエリアネットワーク(LAN)を使って接続します(Set up the Internet connection manually, or connect to the Internet using LAN)" ▶ Click "次へ(Next)"



- 8** Select "電話回線とモデムを使ってインターネットに接続します(Connect to the Internet using a telephone line and a modem)" ▶ Click "次へ(Next)"



9 If the modem selection screen opens, select "FOMA L05A" ▶ Click "次へ (Next)"

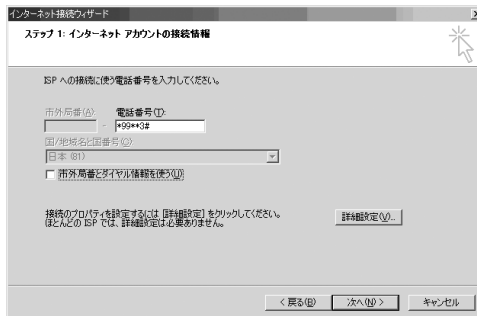
The modem selection screen opens only when the PC has more than one modem.

- If "FOMA L05A" is not displayed, click "インターネットへの接続に使うモデムを選択する (Select the modem used to connect to the Internet)" field and then select "FOMA L05A".



10 Enter the APN phone number in the "電話番号 (Phone Number)" field ▶ Click "詳細設定 (Advanced settings)"

- Do not enter anything in "市外局番(City code)" field
- Disable "市外局番とダイヤル情報を使う(Use the city code and dialing information)".

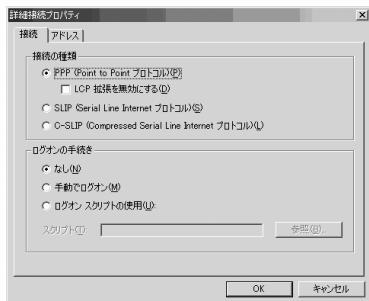


■ Packet communication information

Enter "*99**<cid>#". Enter registration number of APN in <cid>.

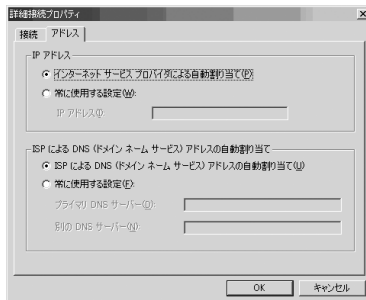
11 Configure the settings on the "接続 (Connection)" tab window according to the examples on the screen.

- If you are connecting to other than 「mopera U」 or 「mopera」, fill in the "接続の種類 (Connection type)" and "ログオン手続き (Log on procedures)" fields according to the information provided by your ISP or network administrator.



12 Click the "アドレス (Address)" tab▶Set each item▶Click "OK"

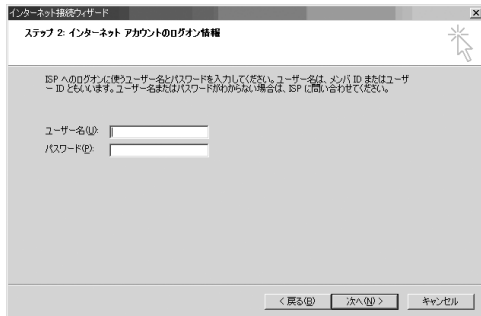
- If you are connecting to other than 「mopera U」 or 「mopera」, fill in the "IPアドレス (IP address)" and "ISPによるDNS (ドメインネームサービス) アドレスの自動割り当て (Assign DNS address automatically by ISP)" fields according to the information provided by your ISP, and follow the instruction from provider.



13 On the "インターネットアカウントの接続情報 (Internet account connection information)" screen, click "次へ (Next)"

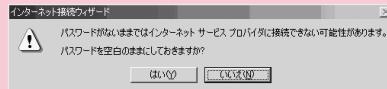
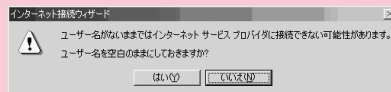
14 Enter "ユーザー名(User Name)" and "パスワード (Password)" ► Click "次へ(NEXT)"

- Enter "ユーザー名(User name)" and "パスワード(Password)" correctly according to the instruction from the provider. Pay attention to the capital characters.

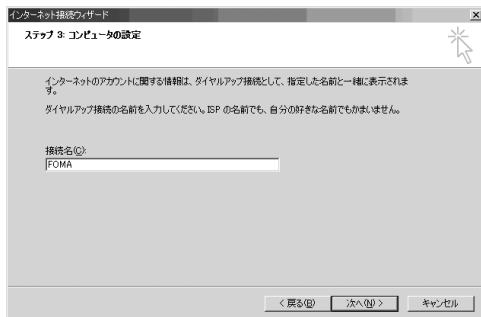


Note

- For 「mopera U」 or 「mopera」, connection is operated even when "ユーザー名(User name)" field and "パスワード (Password)" field are empty. The screen "ユーザー名を空白のままにしておきますか？ (Is it OK to enter nothing in User name?)" is displayed in this case. Click "はい(OK)" in each screen.

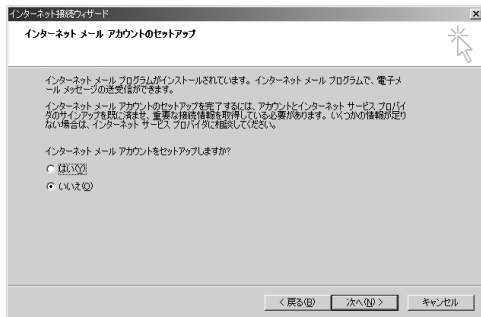


15 Enter a connection name in the "接続名 (Connection Name)" field ▶ Click "次へ (Next)"



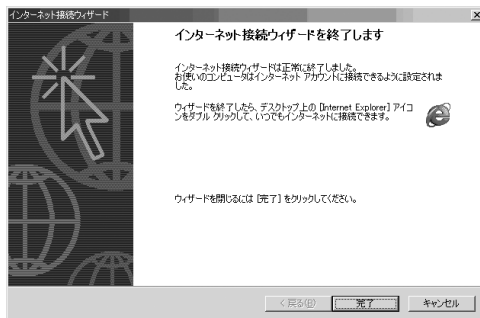
16 Select "いいえ (No)" ▶ Click "次へ (Next)"

- When setting Internet mail, select "はい(OK)". Contact the provider for detailed information of setting.

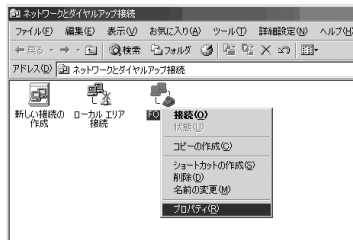


17 Click "完了 (Finish)"

- If "今すぐインターネットに接続するにはここを選び完了をクリックしてください (Select this to connect to the Internet now and click Finish)" appears, disable the option.



18 Select the created dial-up connection icon ▶ Click "ファイル (File)" ▶ "プロパティ (Properties)"



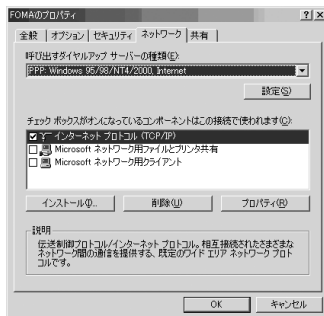
19 Check the settings on the "全般 (General)" tab window

- If more than one modem is connected to a PC, enable only "モデム - FOMA L05A (COM3) (Modem - FOMA L05A (COM3))" in the "接続の方法 (Connection Method)" field
- Disable "ダイヤル情報を使う (Use dialing information)".



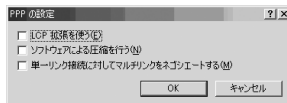
20 Click the "ネットワーク (Networking)" tab ► Confirm each item ► Click "設定 (Settings)"

- Select "PPP:Windows 95/98/NT4/2000, Internet" in the "呼び出すダイヤルアップサーバーの種類 (Dial-up server type to call)" field.
- Enable only "インターネットプロトコル (Internet protocol) (TCP/IP)" in the "コンポーネント (Components)" field.



21 Click "設定 (Settings)"

22 Remove checkmarks from all items ► Click "OK"




23 Click "OK" on the "ネットワーク (Networking)" tab window

Communicating (Connecting by Dial-up)

This section describes steps to start and terminate communication without using L-05A connection software or DOCOMO connection manager.

- Check whether the FOMA terminal and the PC are connected properly before starting communication.→P24
- When performing communication, connect the FOMA terminal you used to configure the settings. If a different FOMA terminal is connected, L-05A Communication Configuration Files (Drivers) may need to be reinstalled.

For Windows Vista

1 Click  "スタート(Start)" ▶ "接続先 (Connect to)" ▶ Select the access point that has been set up ▶ Click "接続 (Connect)."

■ For Windows XP

Click " スタート(Start)" ▶ "すべてのプログラム(All programs)" ▶ "アクセサリ (Accessories)" ▶ "通信 (Communication)" ▶ "ネットワーク接続(Network connection)" ▶ Double click the APN that has been set up

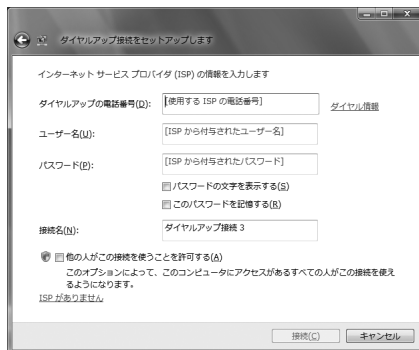
■ For Windows 2000

Click "スタート(Start)" ▶ "プログラム (Programs)" ▶ "アクセサリ(Accessories)" ▶ "通信(Communication)" ▶ "ネットワークとダイヤルアップ接続(Network and Dialup Connections)" ▶ Double-click the APN icon that has been set up.

2 Enter "ユーザー名(User Name)" and "パスワード (Password)" ▶ Click "ダイヤル(Dial)"

The APN will be connected.


- To connect to 「mopera U」 or 「mopera」, you can leave the "ユーザー名(User Name)" and "パスワード(Password)" fields unfilled and click "ダイヤル(Dial)". If another ISP or dialup connection is selected, fill in the "ユーザー名(User Name)" and "パスワード (Password)" fields and click "ダイヤル (Dial)".
- You can save the user name and password or just the password to skip entering them next time.
- Depending on the operating system, a connection completion screen may appear when the dial-up connection is established. However, the connection completion screen does not appear if you previously set the completion message not to appear.



Disconnecting Communication

Exiting the Internet browser may not terminate the connection. Perform the following steps to terminate the connection securely.

For Windows Vista

1 Click  the dial-up icon in the task tray of the PC

A screen indicating the connection status appears.

2 Click "接続または切断(Connect or disconnect)"



■ For Window XP/2000

The above screen will not be displayed. Follow the next procedure.

3 Click "切断(Disconnect)"

The communication will be terminated.



Note

- The communication speed shown on the PC screen may be different from the actual communication speed.

Overseas Use

International Roaming Service (WORLD WING) ..	112
Services Available Overseas	112
Before Using Overseas	113
Setting the Searching Method for Available Networks	115
Configuring Network	116

International Roaming Service (WORLD WING)

WORLD WING is DOCOMO's international roaming service that provides telephone and other types of communication services overseas out of the service area of FOMA network, using affiliated overseas network.

- The following 3 types of communication are included in overseas network.

■3G network

A third generation mobile communication network complying with 3GPP Global standards. (3rd Generation Partnership Project)※

- ※ The local standardization organization established for the development of common technical specifications related to 3rd Generation Mobile Communication Systems (IMT-2000)

■GSM (Global System for Mobile Communication) network

The second generation mobile communication network in a digital communication system that is most widely used around the world.

■GPRS (3General Packet Radio Service) network

GPRS is the 2.5 generation mobile communication system that enables high speed packet communication using GSM.

- It is available to use 3G network or GSM/GPRS network service within service area. For countries/areas support 3G850MHz/GSM850MHz, it is also available to use.
- Before using the FOMA terminal overseas, refer to the followings.
 - "Mobile Phone User's Guide [International Services]"
 - DOCOMO "International Service Web site"

Services Available Overseas

Available communication services may vary depending on the overseas carrier or network.

Available Communication Services

Service	Description
Data Communication	Available for data communication using packets communication.

- ※ Sending and receiving SMS may be available in overseas. Please understand that communication fee is counted when sending SMS.
- ※ Packet communication is not available for GSM network communication type.

Note

- For details on available communication services while using international roaming, refer to Mobile Phone User's Guide [International Services] or visit DOCOMO "International Service Web site".
- Voice call or video telephony features are not supported by L-05A.

Before Using Overseas

STEP1 : Before Leaving Japan

STEP2 : While Overseas

STEP3 : After Coming Back to Japan

Before Leaving Japan

Before using the FOMA terminal overseas, refer to the followings.

- "Mobile Phone User's Guide [International Services]"
- "Mobile Phone User's Guide [Network Services]"
- DOCOMO "International Service Web site"

■ Subscription

- If you subscribed to the FOMA service after September 1, 2005, no separate subscription is required to use "WORLD WING". If you subscribed to the FOMA service on or before August 31, 2005 and have not subscribed to "WORLD WING", a separate subscription is required to use it.
- A FOMA card (green/white) made available for WORLD WING must be inserted in the FOMA terminal.

■ Power source and voltage in the country or region of stay

- Countries and regions may have different power sources, voltages or power outlet shapes. Check these in the instruction manual for your PC or web sites of the PC manufacturer in advance.

■ Network setup

- You can change network setup from overseas.→P116

■ Internet access

- For overseas access points or settings for using the Internet overseas, contact your Internet service provider.

- If you subscribe to mopera U, visit the mopera U web site.
<http://www.mopera.net/> (Japanese only)

While Overseas

■ Switching networks

Searching for and connecting to an access point are performed automatically by default. No special settings are required.

■ Main screen display area

The name of the connected carrier can be viewed in the display area of the Main screen.→P116



Note

- You can manually switch networks if you want to connect to a particular network. See procedure 3 of "ネットワークを設定する (Configuring Networks)" (P116)

Inquiries overseas

If your FOMA card (green/white) is lost or stolen overseas, contact DOCOMO immediately and temporarily suspend your subscription. For inquiry information, see "docomo Information Center" on the back of this manual. Call or data communication charge will still on you after the terminal was lost or stolen.

■ Country Codes for Major Countries

Area	Code	Area	Code
U.S.A	1	Germany	49
U.K.	44	Turkey	90
Italy	39	Japan	81
India	91	New Caledonia	687
Indonesia	62	New Zealand	64
Egypt	20	Norway	47
Australia	61	Hungary	36
Austria	43	Fiji	679
Netherlands	31	Philippines	63
Canada	1	Finland	358
Korea	82	France	33
Greece	30	Brazil	55
Singapore	65	Vietnam	84
Switzerland	41	Peru	51
Sweden	46	Belgium	32
Spain	34	Hong Kong	852
Thailand	66	Macau	853
Taiwan	886	Malaysia	60
Tahiti	689	Maldives	960
Czech	420	Russia	7
China	86		

※ For country code or detailed information, refer to "Mobile Phone User's Guide [International Services]" or DOCOMO "International Service Web site".

■ International Access Codes for Major Countries (Table 1)

Area	Code	Area	Code
Ireland	00	Germany	00
U.S.A.	011	Turkey	00
U.A.E.	00	New Zealand	00
U.K.	00	Norway	00
Italy	00	Hungary	00
India	00	Philippines	00
Indonesia	001	Finland	00
Australia	0011	France	00
Netherlands	00	Brazil	0021
Canada	011		0014
Korea	001	Vietnam	00
Greece	00	Belgium	00
Singapore	001	Poland	00
Switzerland	00	Portugal	00
Sweden	00	Hong Kong	001
Spain	00	Macau	00
Thailand	001	Malaysia	00
Taiwan	002	Monaco	00
Czech	00	Luxembourg	00
China	00	Russia	810
Denmark	00		

※ For codes of other countries or details, visit DOCOMO "International Service Web site".

■ International Phone Codes for Universal Number (Table 2)

Area	Code	Area	Code
Ireland	00	Taiwan	00
U.S.A.	011	China	00
Argentina	00	Denmark	00
U.K.	00	Germany	00
Israel	014	New Zealand	00
Italy	00	Norway	00
Australia	0011	Hungary	00
Austria	00	Philippines	00
Netherlands	00	Finland	990
Canada	011	France	00
Korea	001	Brazil	0021
Colombia	009	Belgium	00
Singapore	001	Portugal	00
Switzerland	00	Hong Kong	001
Sweden	00	Malaysia	00
Spain	00	South Africa	09
Thailand	001	Luxembourg	00

※ For codes of other countries or details, visit DOCOMO "International Service Web site".

After Coming Back to Japan

After coming back to Japan, the FOMA network will be connected automatically.

■ If connection can not be established

Set to "自動検索(Auto)" from "ネットワーク検索(Search Network)" of "ネットワークを設定する(Configuring network)" (P116)

Setting the Searching Method for Available Networks

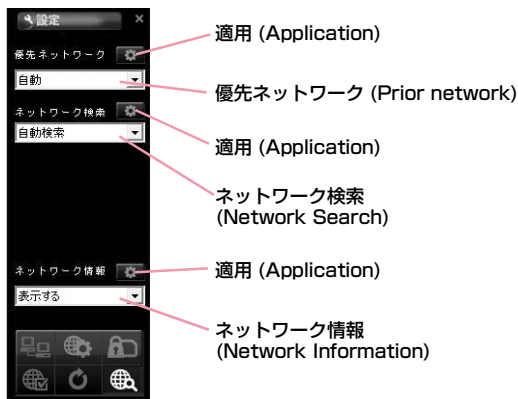
Switching Carriers Manually

The FOMA terminal is set to automatically find and switch to an available network in the country of stay by default. However, if you have a preferred network in the area or network cannot be found automatically, you can set to a network manually. For details, see "Configuring Networks" (P116).

Configuring Network

- Allow you to configure network by L-05A connection software.

1 Click  from the application option screen



2 Specify a "優先ネットワーク(Prior network)"
(Network priority order selection setting)

3 Searching network

■ **自動検索(Auto)**

Network can be searched automatically.

■ **手動検索(Manual)**

Connect to the listed networks manually.

※ If network search mode is set to "manual" overseas,
reset to "Auto" after coming back to Japan.


4 Specify if display or hide the network
information


■ **表示する(Display)**

The name of the network receiving current service is
displayed on the screen.

■ **表示しない(Hide)**


The name of the network receiving current service is
not displayed on the screen.

5 Click the applicable 

- The information entered will not be set without clicking the
applicable 

6 Click 

Note

- How to manually configure network
 - Select "手動選択(Manual)"
 - The available network list will be displayed after searching.
 - Select one from the available networks.
 - Click 
- Network is not displayed in FOMA area when even if "display" is set in network information.
- Connecting to Internet or sending SMS may not be able to operate properly when network setting is changed manually.
- While using Oversea→P111
 - When you are in roaming area and set FOMA terminal to automatically find and you can have automatic roaming service. If network can not be found automatically, select the available network service manually.
 - Some communication services may not available depending on the overseas carrier or network.

Appendix/Troubleshooting

AT Commands	120
AT Command List	121
Troubleshooting	130
Error Messages	132
Warranty and After-Sales Service	134
Updating software	135
Main specifications	136
Export Controls of the Product and Accessories	137
Intellectual Property Rights	139
Index	141


AT Commands

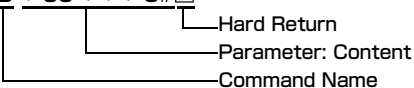
AT commands are used to check the FOMA terminal function settings or status by using a PC. Usually, the communication software issues AT commands so you do not need to be concerned about them. Use AT commands if you want to control the FOMA terminal in your own way.

Form of AT Commands


AT commands should be entered on the Terminal Mode screen of the communication software. Use only single-byte alphanumeric characters.

<Example>

ATD * 99 * * * 3# 



Hard Return
Parameter: Content
Command Name

- An AT command must be entered on a single line including parameters (numbers and symbols) following the command. On the Terminal Mode screen of the communication software, "one line" is from the first character to the character before .

Note

- In the Terminal mode, a PC functions as a communication terminal. Characters entered from the keyboard are sent to a line connected to a communication port.

AT Command List

The following AT commands can be used on the " L-05A" modem port.

- [&F] : A command to initialize settings used as AT&F command.
- [?][=?]: The current settings appear when adding " ?" at the end of the command, and the effective range of the current settings appears when adding " =?" at the end of the command.


Command	Overview	Parameters/Description	Comments Examples
AT&C<n>	Select the operating conditions of the circuit CD for DTE	n=0: Always keeps CD signal ON n=1 (default): CD changes depending on the other party's modem status.	AT&C1 OK
AT&F<n>	Reset the FOMA terminal AT command set values to factory defaults. If executed during a communication, the line is disconnected.	Only n=0 can be set (Skippable)	-
AT+CGDCONT [?] [=?]	Set APN when sending Packet communication.	Refer to P128	Refer to P128
AT+CGEQMIN [?] [=?]	Register criteria value for determining if QoS (Quality of Service) sent from network when PPP Packet communication is established, is acceptable or not.	Refer to P128	Refer to P128
AT+CGEQREQ [?] [=?]	Set QoS(Quality of Service) to request for the network when PPP Packet communication is established.	Refer to P128	Refer to P128
AT+CGMR	Display the version of the AT+CGMR FOMA terminal.	-	AT+CGMR 1234567890123 456 OK

Command	Overview	Parameters/Description	Comments Examples
AT+CGREG=<n> [&F] [?] [=?]	Set whether to be notified of the network registration status.	<n> n=0(default): Do not note. n=1: Notify when outside and inside the service area is changed. Execute [AT+CGREG?] then appears as [+CGREG:<n>,<state>] <state> 0:Not registered 1:Registered Home Network 4: Unknown 5: Registered (while roaming)	AT+CGREG? +CGREG: 0,1 OK AT+CGREG=? +CGREG: (0-2) OK
AT+CGSN	Display the serial number of the FOMA terminal.	-	AT+CGSN 12345678901 2345 OK
AT+CMEE=<n> [&F] [?] [=?]	Set the error report form of the FOMA terminal.	n=0: Display [ERROR] n=1: Display in the form of [+CMEE ERROR: xxxx] (where xxxx are numbers) n=2(default): Display in the form of [+CMEE ERROR: xxxx] (where xxxx are text) ※ If using ATZ or AT&F command to default, "0" is setup. Note that when connecting L-05A to power, the value of ATZ or AT&F command differs.	AT+CMEE=0 OK AT+CMEE? +CMEE: 0 OK AT+CMEE=? +CMEE: (0, 1, 2) OK

Command	Overview	Parameters/Description	Comments Examples
AT+ CNUM	Display the own number of the FOMA terminal	Executing [AT+CNUM] displays in the form of [+CNUM: <number>, <type>] number: phone number type=129: Excluding the international access code+ type=145: Including the international access code+	AT+CNUM +CNUM: "09080189242",129 OK
AT+COPS= [<mode> [,<format> [,<oper> [,<stat>]]] [?] [=?]	Select and set carrier's name/Plmn Number.	<mode> 0 : Auto (Searching network automatically and then change communication service) 1 : Manual (to connect <oper> communication service) 2 : Disconnection communication service ※Not supported 3 : Mapping don't excute. 4 : Auto manual (In case, to disconnect <oper>communication service that excute automatically) ※Not supported <format> 2 : Fixed number <oper> represents country code(MCC) plus network code(MNC). "44010" is displayed for MCC=440 and MNC=10	AT+COPS? +COPS: 0,0,"" ,2 OK AT+COPS=? +COPS: (2,"" ," " , " 44010" ,2) , (3,"" ," " , 44020" ,2) , (0,1,2,3,4) , (0,1,2) OK

Command	Overview	Parameters/Description	Comments Examples
AT+CPAS [=?]	Display FOMA terminal state	Displays in the form of [AT+CPAS : <n>] . n=0: Available to set AT commands. n=3: Available and receiving n=4: Available and receiving	AT+CPAS +CPAS:0 OK AT+CPAS=? +CPAS : (0,3,4) OK
AT+CPIN=" PIN" / AT+CPIN=" PUK" " PIN" [?]	Command to enter the PIN code or unblocking PIN code for FOMA card.	Enter the PIN1 code for " PIN" , and enter unblocking PIN code for " PUK" . Executing [AT+CPIN?] displays [AT+CPIN: <n>] . n=READY: Authenticated n=SIM PIN: Waiting for entry n=SIM PUK: Waiting for unblocking PIN1 code entry n=ERROR: Locked	(+CPIN:SIM PIN status) AT+CPIN=" 1234" OK (+CPIN:SIM PUK status) AT+CPIN=" 12345678" ," 1234" OK
AT+CUSD [&F]	Inquire the change or setting contents of Internet configuration related to the extra service.	Form : AT+CUSD=<n>,"<str>"[,0] n=0 : middle result Do not send <m>[<str>,<dcs>] (default) n=1 : middle result Send <m>[<str>,<dcs>] Middle result : m=0 : setting finishes m=1 : information requirement from network exists. str :0~9、#、*のみ使用可能。 <str>は""で囲む	AT+CUSD=0. "xxxxxxx" OK AT+CUSD=1,"* 148*1* 0000#",0 +CUSD:0,"148* 7#",0 OK AT+CUSD=? +CUSD: 0 OK AT+CUSD=? +CUSD:(0-2) OK

Command	Overview	Parameters/Description	Comments Examples
AT*DANTE	Display the signal strength (number of antenna bars) of the FOMA terminal.	Result format: *DANTE:<m> m=0 : Out of the service area m=1 : State of 0 or 1 antenna bar displayed m=2 : State of 2 antenna bars displayed m=3 : State of 3 antenna bars displayed	AT*DANTE *DANTE:3 OK
AT+GCAP	Display the capability list of the FOMA terminal.	-	AT+GCAP +GCAP: +CGSM,+DS,+ES OK
AT+GMI	Display the manufacturer of the FOMA terminal.	-	AT+GMI LG Electronics Inc. OK
AT+GMM	Display the name of the FOMA terminal.	-	AT+GMM FOMA L05A OK
AT+GMR	Display the s/w version of the FOMA terminal.	-	AT+GMR L05A-01-Vxxx- 440-10 OK

Command	Overview	Parameters/Description	Comments Examples
AT+IFC=<n>.<m> [&F] [?] [=?]	Set the local flow control method between the PC and the FOMA terminal.	n : DCE by DTE control n=0 : No flow control. n=1 : Perform XON/XOFF control. n=2 (default): Perform RS/CS (RTS/CTS) flow control. m : DTE by DCE control. m=0 : Perform No flow control. m=1 : XON/XOFF control. m=2(default) : Perform RS/CS (RTS/CTS) flow control	AT+IFC=2, 2 OK AT+IFC? +IFC: 2,2 OK
AT+WS46=<n> [&F] [?] [=?]	Set the wireless network to be used by the FOMA terminal when dialing.	12: GSM 22: 3G (WCDMA) 25: GSM+3G (WCDMA)	AT+WS46? 25 OK
A/	Retry a command just before performing	 is not needed after entering command.	A/ OK
ATD	Sending packet	Sending packet : ATD*99*** <cid># <cid>1~10 : + Display the APN that configured +CGDCONT	ATD*99***3# CONNECT 7200000
ATE<n> [&F]	Set whether to echo back the text sent from a PC.	n=0 : Not echo back. n=1 (default) : Echo back.	ATE1 OK
ATI<n>	Display the recognition code	n=0 : Display [NTT DOCOMO] n=1 : Display the name of the FOMA terminal (Same as +GMM) n=2 : Display the FOMA terminal version (same as +GMR) n=3 : Display OK n=4 : Display the details of communication functions of the FOMA terminal.	ATIO NTT DoCoMo OK

Command	Overview	Parameters/Description	Comments Examples
ATS3=<n> [&F] [?]	Set the return character (CR) to recognize the end of AT command text string.	n=13 (default) : only n=13 can be specified.	ATS3=13 OK
ATS4=<n> [&F] [?]	Set the line feed (LF) character. It is positioned next to the return character (CR) if displaying the result code in alphanumeric characters.	Only n=10 (default) can be specified.	ATS4=10 OK
ATS5=<n> [&F] [?]	Set the back space (BS) character to delete the last character in the input buffer while AT commands are entered.	Only n=8 (default) can be specified.	ATS5=8 OK
ATV<n> [&F]	Set the display method of the result code.	n=0 :Display in numeric characters. n=1 (default): Display in text.	ATV1 OK
ATZ	Reset the settings on the FOMA terminal with the nonvolatile memory contents. If performed during a communication, the line is disconnected.	-	ATZ OK

Supplementary Explanation of AT Commands

■ Command name : +CGDCONT

- Overview
Set APN when sending packet connection.
- Form
+CGDCONT=[<cid>[," <PDP type>" [, " <APN>"]]]
- Parameter descriptions
Set the destination (APN) when sending packets. See the following examples for command operations.
<cid>*1 : 1~10
<PDP type>*2 : PPP or IP
<APN>*3 : Optional
※1 <cid> is the number used to control the destination (APN) for the packet communication to be registered in FOMA terminal. 1 to 10 can be registered. The default value of <cid>=1 is 「mopera.ne.jp」 and <cid>=3 is 「mopera.net」. Set cid to 2 or a number between 4 and 10.
※2 <PDP type> is a protocol for packet communication.
※3 <APN> is optional string that indicates each destination.
- Command examples
Command to register an APN with the name of abc (When PDP type is PPP, cid is 3)
AT+CGDCONT=2," IP" ," abc"
OK
- Operations without a parameter
AT+CGDCONT=
: Clear all the settings of <cid>.
However, the setting of <cid>=1 or <cid>=3 is reset to the value when purchasing.
AT+CGDCONT? : Display the current settings.

■ Command name: +CGEQMIN=[Parameter]

- Overview
Register the threshold to accept the QoS (Quality of Service) sent from the network when packet communication is established.
- Format
+CGEQMIN=<cid>[.,<Maximum bitrateUL>[,<Maximum bitrate DL>]]
- Parameter description
<cid>*1 : 1~10
<Maximum bitrate UL>*2 : None (default)
<Maximum bitrate DL>*2 : None (default)
※1 <cid> is a number used to manage the access point (APN) for the packet communication registered in the FOMA terminal.
※2 <Maximum bitrate UL> and <Maximum bitrate DL> indicate the minimum communication speed [kbps] of upload and download traffic respectively between the FOMA terminal and the base station. If these are set to None (default), all speeds are permissible. Be aware that a packet communication may not be established because any other speed than this is not permissible.
- Command examples
(1) Command to permit all speeds for both upload and download (When cid=2)
AT+CGEQMIN=2
OK
(2) Command to permit only 5,700kbps for upload and 7,232kbps for download (When cid=2)
AT+CGEQMIN=2,.5700,7232
OK
(3) Command to permit 5,700kbps for upload and all speeds for download (When cid=2)
AT+CGEQMIN=2,.5700
OK

(4) Command to permit all speeds for upload and only 7,232kbps for download (When cid=4)
 AT+CGEQMIN=4,...7232
 OK

- Operations without a parameter
 AT+CGEQMIN= : Reset all <cid> to their defaults.
 AT+CGEQMIN=<cid> : Reset the specified <cid> to its default.

■ **Command name: +CGEQREQ=[Parameter]**

- Overview
 Set the QoS (Quality of Service) requested to the network when packet communication is dialed.
- Format
 +CGEQREQ=[<cid>[,<Maximum bitrate UL>[,<Maximum bitrate DL>]]]
- Parameter description
 <cid>*1 : 1~10
 <Maximum bitrate UL>*2 : None (default)
 <Maximum bitrate DL>*2 : None (default)
 *1 <cid> is a number used to manage the access point (APN) for the packet communication registered in the FOMA terminal.
 *2 <Maximum bitrate UL> and <Maximum bitrate DL> indicate the minimum communication speed [kbps] of upload and download traffic respectively between the FOMA terminal and the base station. If these are set to None (default), all speeds are permissible. Be aware that a packet communication may not be established because any other speed than this is not permissible.
- Command example
 Command to require 5,700kbps for upload and 7,232kbps for download (When cid=2)
 AT+CGEQREQ=2,2,5700,7232
 OK

- Operations without a parameter
 AT+CGEQREQ= : Reset all <cid> to their defaults
 AT+CGEQREQ=<cid> : Set the specified <cid> as default.

Note

- This command, (+CGDCONT, +CGEQMIN, + CGEQREQ) is not reset by [G] and [Z], either.

Result Codes

■ **List of result codes**

Numeric display	Text display	Description
0	OK	Operation performed properly
1	CONNECT	Connected to other party
3	NO CARRIER	Line disconnected
4	ERROR	Unable to accept command

Troubleshooting

First, check whether software is required to update. Update software if necessary. (Updating Software⇒P135) Contact General Inquiries specified by DOCOMO located in "Repairs" at the last page of the manual if the symptom is not improved after confirming the check box.

- The FOMA terminal is not recognized

Symptom	Check
FOMA terminal is not recognized	Reinsert the FOMA terminal all the way into the USB port securely.
	Verify the L-05A Communication Configuration Files (Drivers) for the FOMA terminal functioning properly.→P35, P42
	Communication may fail and the FOMA terminal cannot be properly recognized and functioned, if the PC is started up or restarted with the FOMA terminal FOMA terminal left inserted in it. In this case, remove and reinsert the FOMA terminal. If communication fails even after the FOMA terminal is inserted again, remove it once, restart the PC, then insert the FOMA terminal into the PC again.
	When connecting the FOMA terminal with a USB port, if data communication is not available without being recognized, double click the "DOCOMO" icon recognized as a CD drive or start "L-05A connection software" or "DOCOMO connection manager" to recognize the FOMA terminal as a modem.
	The FOMA card will not be able to use if PIN1 unlock code is wrongly entered 10 times in a row. For further information, visit DOCOMO shop.

■ Communication problems

Symptom	Check
Communications are not possible	Verify that signals are received in the service area.
	In the setting of Send Caller ID does not conform to the provider's instructions, communication may not be performed.→ P74, P90
	Check if you set the FOMA Card Setting to " PIN1 unblocking" .→P69 If set to (PIN1 Lock), launch the L-05A connection software, then change FOMA card setting to " PIN1 unblocking" .→P71
	Check the property settings of the modem and the registration of the destination (APN)

■ Problems with AT Commands

Symptom	Check
[ERROR] appears when a command is entered	Verify that you entered a correct ATcommand.
	Check the properties of the terminal software to see whether a device other than the FOMA terminal is selected
[OK] does not appear after an AT command is entered.	Check the L-05A Communication Configuration Files (Drivers) have been installed and functioned properly.
	Verify that the commands start with "AT" or "at".

■ Other problems

Symptom	Check
The terminal stopped working suddenly	Verify that the FOMA CARD is properly inserted to FOMA terminal.→P19
	Your PC operating environments may have changed because a new peripheral or software was installed. Make a confirmation with manufacturer or maker of accessory or software.
The FOMA terminal is not detected if it is inserted into a USB port while installing the L-05A Communication Configuration Files (Drivers).	Please confirm the followings. <ul style="list-style-type: none"> • Whether the PC or OS you are using is in the latest condition? (If required, apply revision program of OS or a maker.) • Whether the FOMA terminal recognizes normally when other USB devices are inserted into the USB port? • Whether the FOMA terminal operates normally when being inserted into another PC? • Whether the FOMA terminal operates normally when being reset to its default? ※ : For inquiries related to OS or PC, contact Microsoft or PC manufactures.
	Internet connection speed decreased significantly

Error Messages

Error Messages	Description
圏外	You are out of service area or available network.
サービス地域ではありません。ネットワークを再検索しますか?	You may be out of service area or available network, or network error. Please do network setting again.
端末の認証に失敗しました。顧客センターまたは代理店にお問い合わせください。	Communication may fail and the FOMA terminal cannot be properly recognized if the PC is started up or restarted with the FOMA terminal left inserted in it. In this case, remove and reinsert the FOMA terminal. If communication fails even after the FOMA terminal is inserted again, remove it once, restart the PC, then insert the FOMA terminal into the PC again. Contact DOCOMO shop if the same problems persist.
データ通信中には設定できません。終了後に設定してください。	You cannot customize setting during data communication. Try again after closing data communication.
変更するPIN1コードと確認用のPIN1コードが異なります。	Two of new PIN1 are not identical each other. New PIN1 you want to change is not matched to the PIN1 you entered for verification purpose. Enter correct PIN1.
FOMAカードが挿入されているか確認してください。	Make sure to insert FOMA card into FOMA terminal before inserting to a PC.
FOMA端末が取り外されました。	Do not remove FOMA card while using FOMA terminal.
FOMA端末が取り付けられていません。	Verify the FOMA terminal is properly inserted into a PC. Verify that the FOMA terminal is properly recognized by the PC.
PIN1を複数回間違えたため使用できなくなりました。(PIN1 blocked) PIN1コードがロックされています。	An incorrect PIN1 was improperly entered 3 times in a row. Available functions will be limited. Enter PIN unblocking code to unlock.
PIN1コードが違います。残り(○/3)再入力可能です。再入力してください。	An incorrect PIN1 code has been entered. Enter the correct PIN1 code again
PIN1コードが間違えます。(PIN1コードは0123456789のみ使用できます。)	You can use 0,1,2,3,4,5,6,7,8,9 as a valid PIN1 code. Others are invalid.
PIN1コードは4~8文字です。	Valid PIN1 code is from 4 to 8 digit.

Error Messages	Description
PIN1コードの変更はPINロックが設定されているときに可能です。	To change the PIN1, PIN must be locked. Switch PIN unblocking to PIN blocking.
PINロック解除コードが違います。残り (〇/10) 回入力可能です。再入力してください。	An incorrect PIN was improperly entered 10 times in a row. Available functions will be limited. Please enter the contact unblocking PIN code
SMS送信に失敗しました。	You may be out of service or available network.You may encounter problems due to the network error.
PIN1ロック解除コードがブロックされているためFOMAカードを使用できません。顧客センターにお問い合わせください。	You are no longer able to use FOMA card that PIN unblocking code has been improperly entered 10 times in a row. Please contact DOCOMO shop.
FOMA端末の初期化に失敗しました。FOMA端末をリセットしてください。	Communication may fail and the FOMA terminal cannot be properly recognized, if the PC is started up or restarted with the FOMA terminal left inserted in it. In this case, remove and reinsert the FOMA terminal. If communication fails even after the FOMA terminal is inserted again, remove it once, restart the PC, then insert the FOMA terminal into the PC again.
送受信データなし。待ち受けモードに入ります。	When no data transmission has been incurred for a certain period of time. Communication will be resumed when data transmission is incurred, so stay as it is.

■ Replacement parts

Basically, replacement parts (parts required to maintain product function) will be kept in stock for at least 4 years after termination of production. Please note that the product may not be repaired even during this period, depending on the malfunctioning parts due to a shortage of those parts. Depending on the nature of the required repairs, it may still be possible to repair your terminal even after this period. Contact "Repairs" listed on the back of this manual.

Pay attention

- Do not modify the FOMA terminal, the FOMA card or its accessories.
 - Fire, injury or damage may result.
 - If the FOMA terminal is modified (part replacement, modification, painting, etc.), it will be repaired only after the modified parts have been restored to the condition at the time of purchase. However, repair may be refused depending on the nature of modification.
 - Using sticker to decorate the FOMA terminal.
 - Exchanging the packing with those other than DOCOMO product.
 - Repair of failures or damage caused by modification are charged even during the warranty period.
- Do not remove any inscription stickers attached to the FOMA terminal. The inscription stickers certify that the FOMA terminal satisfies specific technical standards. If stickers are removed intentionally or are reattached in such a way that confirmation of the sticker's contents is impossible, repair or servicing may be refused because confirmation of whether or not the device conforms to relevant technical standards cannot be made.

Updating software

Download the modification file of FOMA terminal from download site on the Internet and then update the software. If software update is necessary, you will be informed at the DOCOMO web site with "お知らせ (Information)".

Note

- Do not unplug the FOMA terminal with the computer during software update.
- Software update (downloading and rewriting) may take a while.
- If software update fails, all operations become unavailable. In this case, bring your FOMA terminal to a DOCOMO service center.

Main specifications

■ Operation system

Windows 2000 Professional Japanese version
(Service Pack 4 or later)
Windows XP Home Edition Japanese version
(Service Pack 2 or later)
Windows XP Professional Japanese version
(Service Pack 2 or later)
Windows Vista 32 bit Japanese version (Service Pack 1
or later)
Windows Vista 64 bit Japanese version (Service Pack 1
or later)
Mac OS X 10.4.11 Japanese version
Mac OS X 10.5.6 Japanese version

■ Communication Speed

Packet Communication:
Maximum receiving: 7.2Mbps (Best effort)
Maximum sending: 5.7Mbps (Best effort)
※ The maximum speed of 7.2Mbps for receiving and
5.7Mbps for sending is theoretical values and does not
show the actual ones. The actual communication speed
depends on communication environment and network
congestion.
※ Out of High-Speed area, the maximum communication
speed for receiving and sending is 384kbps

■ Operating environment

Temperature : 5°C~35°C
Humidity : 45%~85%

■ Power source

Power voltage

DC5V±5%(Supplied from PC)

Max Current consumption

Max Current consumption while communicating
3G: Approx. 550mA or below
GSM/GPRS: Approx. 300mA or below
Average Current consumption while communicating
3G: Approx. 180mA or below
GSM/GPRS: Approx. 170mA or below
Average Current consumption while Standby:
3G: Approx. 90mA or below
GSM/GPRS: Approx. 90mA or below
※ Depending on the usage, power consumption fluctuates.

■ Form factor

USB connection type

■ Dimensions

Height: approx. 80mm
Width: approx. 32mm
Depth: approx. 13mm

■ Weight

Approx. 37g

Export Controls of the Product and Accessories

Japan Export Control Regulations (“ Foreign Exchange and Foreign Trade Law” and relevant laws and regulations) and U.S. Reexport Regulations (Export Administration Regulations: EAR) apply to this product and its accessories. If you export or re-export this product or its accessories, please follow the necessary procedures at your own risk and expense. For details on the procedures, contact the Ministry of Economy, Trade and Industry or the U.S. Department of Commerce.

European Union Directives Conformance Statement



Hereby, LG Electronics, Inc. declares that this product is in compliance with:

- The essential requirements and other relevant provisions of Directive 1999/5/EC
- All other relevant EU Directives



The above gives an example of a typical Product Approval Number.

FCC Regulations

Statement

This equipment has been tested and found to comply with the limits for a class B digital device, pursuant to Part 15 of the FCC Rules. These limits are designed to provide reasonable protection against harmful interference in a residential installation. This equipment generates uses and can radiate radio frequency energy and, if not installed and used in accordance with the instructions, may cause harmful interference to radio communications. However, there is no guarantee that interference will not occur in a particular installation. If this equipment does cause harmful interference or television reception, which can be determined by turning the equipment off and on, the user is encouraged to try to correct the interference by one or more of the following measures:

- Reorient or relocate the receiving antenna.
- Increase the separation between the equipment and receiver.
- Connect the equipment into an outlet on a circuit different from that to which the receiver is connected.
- Consult the dealer or an experienced radio/TV technician for help.

Change or Modifications that are not expressly approved by the manufacturer could void the user's authority to operate the equipment.

Class B Compliance

This device and its accessories comply with part 15 of FCC rules.

Operation is subject to the following two conditions:

- This device & its accessories may not cause harmful interference.
- This device & its accessories must accept any interference received, including interference that may cause undesired operation.

Body-worn Operation

This Mobile Broadband USB Modem, model L-05A, is approved for use in normal size laptop computers only (typically with 12" or larger display screens). To comply with FCC RF exposure requirements, this modem should not be used in configurations that cannot maintain at least 5mm (approximately 0.2 inches) from users and bystanders, and 12mm (approximately 0.47 inches) from the top of the USB modem. This USB modem has been tested for compliance with FCC/IC RF exposure limits in the laptop computer(s) configurations with horizontal and vertical USB slots and can be used in laptop computers with substantially similar physical dimensions, construction, and electrical and RF characteristics. This USB modem must not be used with any other antenna or transmitter that has not been approved to operate in conjunction with this modem.

Consumer Information on SAR (Specific Absorption Rate)

THIS DEVICE MEETS THE GOVERNMENT'S REQUIREMENTS FOR EXPOSURE TO RADIO WAVES.

Your wireless device is a radio transmitter and receiver. It is designed and manufactured not to exceed the emission limits for exposure to radiofrequency (RF) energy set by the Federal Communications Commission of the U.S. Government. These limits are part of comprehensive guidelines and establish permitted levels of RF energy for the general population. The guidelines are based on standards that were developed by independent scientific organizations through periodic and thorough evaluation of scientific studies.

The standards include a substantial safety margin designed to assure the safety of all persons, regardless of age and health. The exposure standard for wireless devices employs a unit of measurement known as the Specific Absorption Rate, or SAR.

The SAR limit set by the FCC is 1.6W/kg.

- ※ Tests for SAR are conducted using standard operating positions specified by the FCC with the device transmitting at its highest certified power level, the actual SAR level of the device while operating can be well below the maximum value. This is because the device is designed to operate at multiple power levels so as to use only the power required to reach the network. In general, the closer you are to a wireless base station antenna, the lower the power output.

Before a device is available for sale to the public, it must be tested and certified to the FCC that it does not exceed the limit established by the government-adopted requirement for safe exposure. The tests are performed in positions and locations (e.g., worn on the body) as required by the FCC for each model.

The highest SAR value for this device when worn on the body is 1.3W/kg.

The FCC has granted an Equipment Authorization for this device with all reported SAR levels evaluated as in compliance with the FCC RF emission guidelines. SAR information on this device is on file with the FCC and can be found under the Display Gant section of <http://www.fcc.gov/> after searching on FCC ID BEJL05A. Additional information about Specific Absorption Rates (SAR) can be found on the Cellular Telecommunications Industry Association (CTIA) web-site at <http://www.wow-com.com>.

Intellectual Property Rights

Copyrights and Rights of Portrait

Without permission of the copyright owner you may not duplicate, modify, transmit over public communication lines, etc. any document, image, music, software, or other content owned by a third party that you have used this product to download from an Internet web site, etc., except for private uses such as duplication and indexing that are allowed by copyright law.