

Fingerprint Identification System

USB Fingerprint Reader



Installation Guide

Model : LAEF10-R
LAEF10-S





CAUTION

RISK OF ELECTRIC SHOCK
DO NOT OPEN



CAUTION: TO REDUCE THE RISK OF ELECTRIC SHOCK
DO NOT REMOVE COVER (OR BACK)
NO USER-SERVICEABLE PARTS INSIDE
REFER SERVICING TO QUALIFIED SERVICE PERSONNEL.



This lightning flash with arrowhead symbol within an equilateral triangle is intended to alert the user to the presence of uninsulated dangerous voltage within the product's enclosure that may be of sufficient magnitude to constitute a risk of electric shock to persons.



The exclamation point within an equilateral triangle is intended to alert the user to the presence of important operating and maintenance (servicing) instructions in the literature accompanying the product.

FCC (Federal Communications Commission)

This equipment has been tested and found to comply with the limits for a Class B digital device, pursuant to Part 15 of the FCC Rules. These limits are designed to provide reasonable protection against harmful interference in a residential installation.

This equipment generates uses and can radiate radio frequency energy and, if not installed and used in accordance with the instructions, may cause harmful interference to radio communications.

However, there is no guarantee that interference will not occur in a particular installation. If this equipment does cause harmful interference to radio or television reception, which can be determined by turning the equipment off and on, the user is encouraged to try to correct the interference by one or more of the following measures:

- Reorient or relocate the receiving antenna.
 - Increase the separation between the equipment and receiver.
 - Connect the equipment into an outlet on a circuit different from that to which the receiver is connected.
 - Consult the dealer or an experienced radio/TV technical for help.
- WARNING:** This equipment may generate or use radio frequency energy. Changes or modifications to this equipment may cause harmful interference unless the modifications are expressly approved in the instruction manual. The user could lose the authority to operate this equipment if an unauthorized change or modification is made.

This device complies with Part 15 of the FCC's Rules.

Operation is subject to the following two Conditions:

1. This device may not cause harmful interference, and
2. This device must accept any interference received, including interference that may cause undesirable operation.

- A suitable conduit entries, knock-outs or glands shall be provided in the cable entries of this product in the end user.
- **Caution:** Danger of explosion if battery is incorrectly replaced. Replaced only with the same or equivalent type recommended by the manufacturer.
Dispose of used batteries according to the manufacturer's instructions.

- Holes in metal, through which insulated wires pass, shall have smooth well rounded surfaces or shall be provided with bushings.

Warning: Do not install this equipment in a confined space such as a bookcase or similar unit.

Warning: Wiring methods shall be in accordance with the National Electric Code, ANSI/NFPA 70.

Warning: This is a class A product. In a domestic environment this product may cause radio interference in which case the user may be required to take adequate measures.

Warning: To reduce a risk of fire or electric shock, do not expose this product to rain or moisture.

Caution: This installation should be made by a qualified service person and should conform to all local codes.

Caution: To avoid electrical shock, do not open the cabinet. Refer servicing to qualified personnel only.

Caution: The apparatus should not be exposed to water (dripping or splashing) and no objects filled with liquids, such as vases, should be placed on the apparatus.

To disconnect power from the mains, pull out the mains cord plug. When install the product, ensure that the plug is easily accessible.



Disposal of your old appliance

1. When this crossed-out wheeled bin symbol is attached to a product it means the product is covered by the European Directive 2002/96/EC.
2. All electrical and electronic products should be disposed of separately from municipal waste stream via designated collection facilities appointed by the government or the local authorities.
3. The correct disposal of your old appliance will help prevent potential negative consequences for the environment and human health.
4. For more detailed information about disposal of your old appliance, please contact your city office, waste disposal service or the shop where you purchased the product.
5. EEE Compliance with Directive.

Hereby, L.G. declares that this LAEF10-R, LAEF10-S is in compliance with the essential requirements and other relevant provisions of directive 1999/5/EC.



This product is manufactured to comply with EMC Directive 2004/108/EC and Low Voltage Directive 2006/95/EC.

European representative :

This class [B] digital apparatus complies with Canadian ICES-003 Get appareil numerique de la classe [B] est conforme a la norme NMB-003 du canada.

Important Safety Instructions

1. **Read these instructions.** - All these safety and operating instructions should be read before the product is operated.
2. **Keep these instructions.** - The safety, operating and use instructions should be retained for future reference.
3. **Heed all warnings.** - All warnings on the product and in the operating instructions should be adhered to.
4. **Follow all instructions.** - All operating and use instructions should be followed.
5. **Do not use this apparatus near water.** - For example: near a bath tub, wash bowl, kitchen sink, laundry tub, in a wet basement; near a swimming pool; etc.
6. **Clean only with dry cloth.** - Unplug this product from the wall outlet before cleaning. Do not use liquid cleaners.
7. **Do not block any ventilation openings. Install in accordance with the manufacturer's instructions.** - Slots and openings in the cabinet are provided for ventilation, to ensure reliable operation of the product, and to protect it from overheating. The openings should never be blocked by placing the product on a bed, sofa, rug or other similar surface. This product should not be placed in a built-in installation such as a bookcase or rack unless proper ventilation is provided and the manufacturer's instructions have been adhered to.
8. **Do not install near any heat sources such as radiators, heat registers, stoves, or other apparatus (including amplifiers) that produce heat.**
9. **Do not defeat the safety purpose of the polarized or grounding-type plug. A polarized plug has two blades with one wider than the other. A grounding type plug has two blades and a third grounding prong. The wide blade or the third prong are provided for your safety. If the provided plug does not fit into your outlet, consult an electrician for replacement of the obsolete outlet.**
10. **Protect the power cord from being walked on or pinched particularly at plugs, convenience receptacles, and the point where they exit from the apparatus.**
11. **Only use attachments/accessories specified by the manufacturer.**

Important Safety Instructions

12. Use only with the cart, stand, tripod, bracket, or table specified by the manufacturer, or sold with the apparatus. When a cart is used, use caution when moving the cart/apparatus combination to avoid injury from tip-over.



13. Unplug this apparatus during lightning storms or when unused for long periods of time.
14. Refer all servicing to qualified service personnel. Servicing is required when the apparatus has been damaged in any way, such as powersupply cord or plug is damaged, liquid has been spilled or objects have fallen into the apparatus, the apparatus has been exposed to rain or moisture, does not operate normally, or has been dropped.

Contents

1. Before start



2. Install driver

1.1. Safety precautions	4	2.1. Start to install software	8
1.2. Product description	6	2.2. Finishing software installation	9
1.3. Caution before installation	7	2.3. Connecting through USB port	10
1.4. System requirements	7	2.4. Begin hardware installation	11
		2.5. Windows compatibility warning	12
		2.6. Finishing hardware installation	13

Contents

※ Please use a device after reading installation guide



3. Device check

3.1. Device check 14



4. Troubleshooting







4.1. Incorrect installation of driver 15

4.2. Assign driver path 16

1. Before start

1.1. Safety precautions

Warning

- | | |
|--|--|
|  Do not place a fire source near the reader.
It may cause a fire. |  Do not disassemble, repair, or modify the reader at discretion.
It may cause an electric shock, fire or damage. |
|  Handling with wet hands or allowing liquid to flow into it is prohibited.
It may cause an electric shock or damage. |  Keep out of reach of children.
It may cause an accident or damage. |
|  Avoid using insecticides or flammable sprays near the reader.
It may result in deformation or color change. |  Avoid using water, benzene, thinner, or alcohol for cleaning.
It may cause an electric shock or fire. |


Warning

If the above warnings are ignored, it may result in death or serious injury.

Cautions

If the above cautions are ignored, it may result in property loss or human injury.

 The sign is a “Prohibition”

 The sign is that user should keep the manual

1.Before start

Caution

- ⊘ Do not contaminate the fingerprint input area.

Fingerprints may not be well recognized.

- ⊘ Avoid high humidity or dust.

The reader may be damaged.

- ⊘ Avoid impacts or using sharp objects on the reader.

The reader may be damaged and broken.

- ⊘ Do not place a magnet close to the reader.

The reader may break down or malfunction.

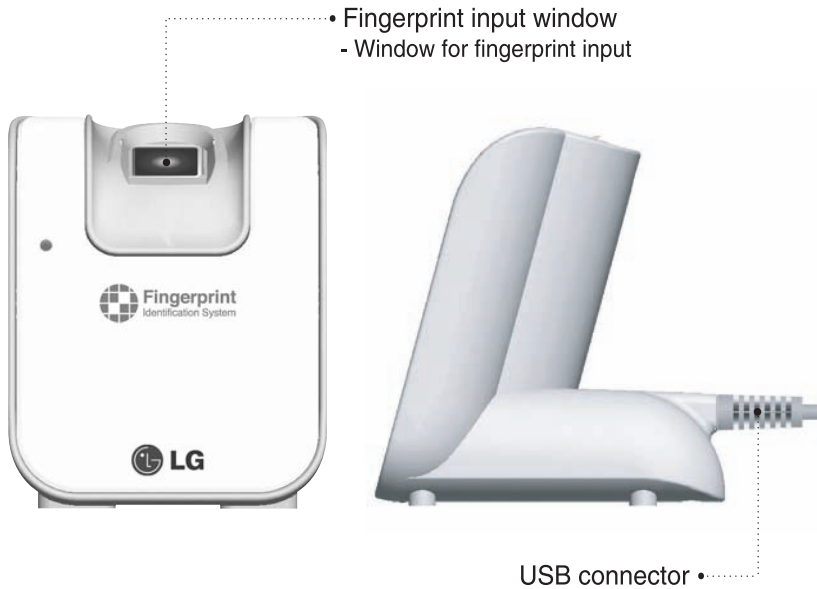
- ⊘ Avoid severe temperature changes.

The reader may be broken.

- ⊘ Under no circumstances will Union Community be responsible for accidents or damages caused by inappropriate use of the product without referring to this installation guide.

1. Before start

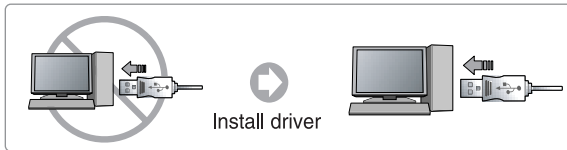
1.2. Product description



1. Before start

1.3. Caution before installation

- Please connect USB cable after installing driver.



1.4. System requirements

OS	Windows NT/XP/2000/2003/vista	
CPU	Minimum	PIII
	Recommend	PIV or higher
Memory	Minimum	64MB
	Recommend	128MB or higher
HDD	Minimum	2GB
	Recommend	4GB or higher
Communication	USB 2.0	

2. Install driver

2.1. Start to install software

The installation process will start automatically after inserting the CD.

Click [Next].

(If the installation process does not start, please double click 'setup.exe' in the 'Driver' folder of installation CD.)

