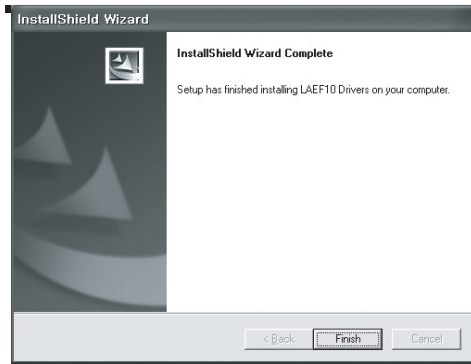


## 2.Install driver

---

### 2.2. Installing software completely

Click [Finish] to end installation.

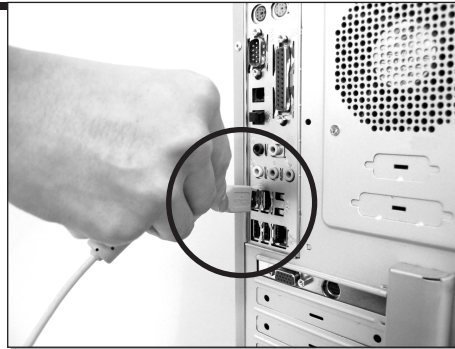


## 2.Install driver

---

### 2.3. Connecting through USB port

Please connect the USB cable to the USB port on the computer as illustrated in the picture.



## 2. Install driver

---

### 2.4. Begin hardware installation

Windows should recognize the fingerprint reader when plugged in. The Found New Hardware Wizard will be displayed. Click [Next] to continue.

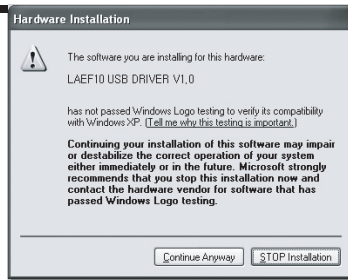


## 2.Install driver

---

### 2.5. Windows compatibility warning

Please click [Continue Anyway].



## 2.Install driver

---

### 2.6. Finishing hardware installation

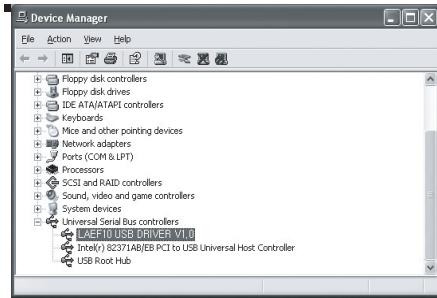
Please click [Finish] to close the Found New Hardware Wizard.



## 3.Device check

### 3.1. Device check

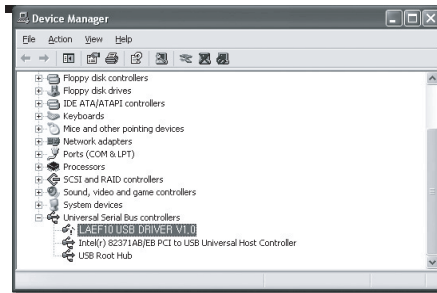
To check if the fingerprint identification device has been correctly installed, go to [My Computer] → [Control Panel] → [System] → [Hardware] → [Device Manager] and confirm the USB controller. If it shows Fingerprint Reader v2.0 as below, the fingerprint identification device has been properly installed.



## 4. Troubleshooting

### 4.1. Incorrect installation of driver

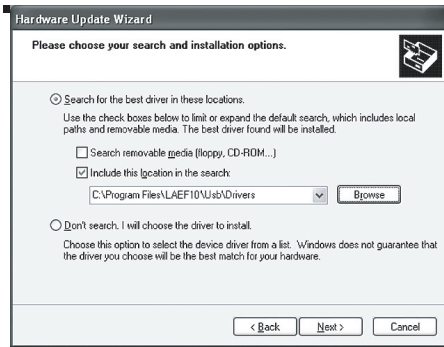
If the yellow exclamation mark appears in the Device Manager, please remove the device and refresh. Repeat the USB driver installation process setup again.



## 4. Troubleshooting

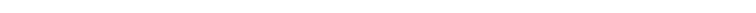
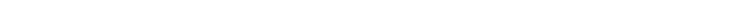
### 4.2. Assign driver path

If the setup screen does not appear automatically or the installation wizard prompts you to assign the driver path during setup, please browse and choose the folder [C:\Program Files\UnionCommunity\Usb\Drivers].

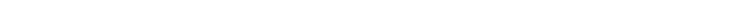




# Memo



# Memo







P/N : MFL62732701

