

User's Guide

LSM1850 LSM2150

Make sure to read the Important Precautions before using the product.
Keep the User's Guide(CD) in an accessible place for future reference.

See the label attached on the product and give the information to your dealer when you ask for service.

This unit has been engineered and manufactured to ensure your personal safety, however improper use may result in potential electrical shock or fire hazards. In order to allow the proper operation of all safeguards incorporated in this display, observe the following basic rules for its installation, use, and servicing.

On Safety

Use only the power cord supplied with the unit. In case you use another power cord, make sure that it is certified by the applicable national standards if not being provided by the supplier. If the power cable is faulty in any way, please contact the manufacturer or the nearest authorized repair service provider for a replacement.

The power supply cord is used as the main disconnection device. Ensure that the socket-outlet is easily accessible after installation.

Operate the display only from a power source indicated in the specifications of this manual or listed on the display. If you are not sure what type of power supply you have in your home, consult with your dealer.

Overloaded AC outlets and extension cords are dangerous. So are frayed power cords and broken plugs. They may result in a shock or fire hazard. Call your service technician for replacement.

As long as this unit is connected to the AC wall outlet, it is not disconnected from the AC power source even if the unit is turned off.

Do not Open the Display:

- There are no user serviceable components inside.
- There are Dangerous High Voltages inside, even when the power is OFF.
- Contact your dealer if the display is not operating properly.

To Avoid Personal Injury :

- Do not place the display on a sloping shelf unless properly secured.
- Use only a stand recommended by the manufacturer.
- Do not drop an object on or apply impact to the product. Do not throw any toys or objects on the product screen.
It can cause injury to human, problem to product and damage the display.

To Prevent Fire or Hazards:

- Always turn the display OFF if you leave the room for more than a short period of time. Never leave the display ON when leaving the house.
- Keep children from dropping or pushing objects into the display's cabinet openings. Some internal parts carry hazardous voltages.
- Do not add accessories that have not been designed for this display.
- When the display is to be left unattended for an extended period of time, unplug it from the wall outlet.
- In the presence of thunder and lightning, never touch the power cord and signal cable because it can be very dangerous. It can cause electric shock.

On Installation

Do not allow anything to rest upon or roll over the power cord, and do not place the display where the power cord is subject to damage.

Do not use this display near water such as near a bathtub, washbowl, kitchen sink, laundry tub, in a wet basement, or near a swimming pool.

Displays are provided with ventilation openings in the cabinet to allow the release of heat generated during operation. If these openings are blocked, built-up heat can cause failures which may result in a fire hazard. Therefore, NEVER:

- Block the bottom ventilation slots by placing the display on a bed, sofa, rug, etc.
- Place the display in a built-in enclosure unless proper ventilation is provided.
- Cover the openings with cloth or other material.
- Place the display near or over a radiator or heat source.

Do not rub or strike the Active Matrix LCD with anything hard as this may scratch, mar, or damage the Active Matrix LCD permanently.

Do not press the LCD screen with your finger for a long time as this may cause some afterimages.

Some dot defects may appear as Red, Green or Blue spots on the screen. However, this will have no impact or effect on the display performance.

If possible, use the recommended resolution to obtain the best image quality for your LCD display. If used under any mode except the recommended resolution, some scaled or processed images may appear on the screen. However, this is characteristic of the fixed-resolution LCD panel.

Leaving a fixed image on the screen for a long time may cause damage to the screen and cause image burn-in. Make sure to use a screen saver on the product. Burn-in and related problems are not covered by the warranty on this product.

Do not shock or scratch the front and sides of the screen with metallic objects. Otherwise, it may cause damage to the screen.

Make sure the panel faces forward and hold it with both hands to move. If you drop the product, the damaged product can cause electric shock or fire. Contact an authorized the service center for repair.

Avoid high temperatures and humidity.

Important Precautions

NOTE

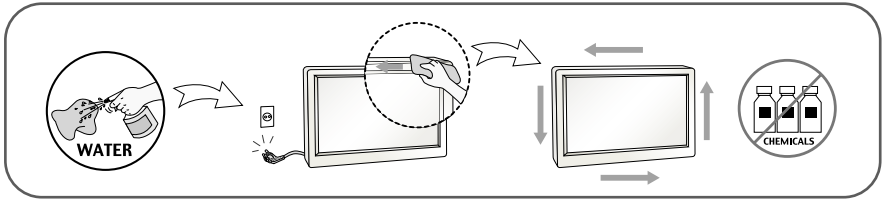
- THE MANUFACTURER IS NOT RESPONSIBLE FOR ANY RADIO OR TV INTERFERENCE CAUSED BY UNAUTHORIZED MODIFICATIONS TO THIS EQUIPMENT. SUCH MODIFICATIONS COULD VOID THE USER'S AUTHORITY TO OPERATE THE EQUIPMENT.

NOTE

- This equipment has been tested and found to comply with the limits for a class B digital device, pursuant to part 15 of the FCC Rules. These limits are designed to provide reasonable protection against harmful interference in a residential installation. This equipment generates, uses and can radiate radio frequency energy and, if not installed and used in accordance with the instructions, may cause harmful interference to radio communications. However, there is no guarantee that interference will not occur in a particular installation. If this equipment does cause harmful interference to radio or television reception, which can be determined by turning the equipment off and on, the user is encouraged to try to correct the interference by one or more of the following measures:
 - Reorient or relocate the receiving antenna.
 - Increase the separation between the equipment and the receiver.
 - Connect the equipment into an outlet on a circuit different from that to which the receiver is connected.
 - Consult the dealer or an experienced radio/TV technician for help.

On Cleaning

- Unplug the display before cleaning the face of the display screen.
- Use a slightly damp (not wet) cloth. Do not use an aerosol directly on the display screen because over-spraying may cause electrical shock.
- When cleaning the product, unplug the power cord and scrub gently with a soft cloth to prevent scratching. Do not clean with a wet cloth or spray water or other liquids directly onto the product. An electric shock may occur. (Do not use chemicals such as benzene, paint thinners or alcohol)
- Spray water onto a soft cloth 2 to 4 times, and use it to clean the front frame; wipe in one direction only. Too much moisture may cause staining.



On Repacking

- Do not throw away the carton and packing materials. They make an ideal container in which to transport the unit. When shipping the unit to another location, repack it in its original material.

On Disposal (Only, Hg lamp used LCD Monitor)

- The fluorescent lamp used in this product contains a small amount of mercury.
- Do not dispose of this product with general household waste.
- Disposal of this product must be carried out in accordance to the regulations of your local authority.

!!! Thank for selecting LGE products !!!

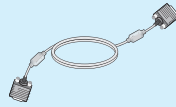
- Please make sure the following items are included with your monitor. If any items are missing, contact your dealer.



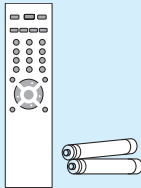
User's Guide/Cards



Power Cord



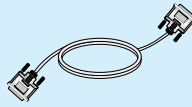
15-pin D-Sub Signal Cable
(To set it up, this signal cable may be attached to this product before shipping out.)



Remote Control/Batteries



Audio Cable (PC)



DVI-D Cable (PC)

NOTE

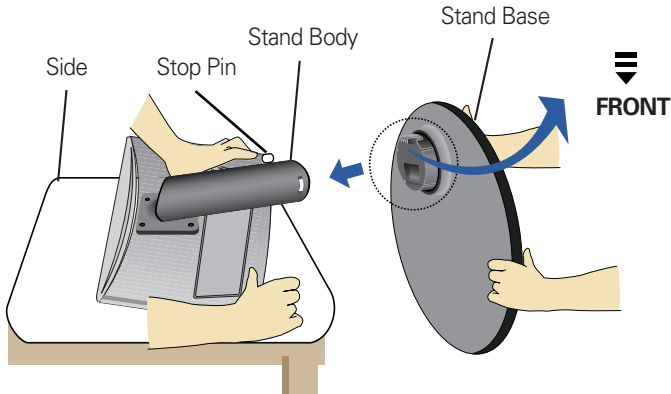
- This accessories may look different from those shown here.
- User must use shielded signal interface cables (D-sub 15 pin cable) with ferrite cores to maintain standard compliance for the product.

- Before setting up the monitor, ensure that the power to the monitor, the computer system, and other attached devices is turned off.

Connecting the stand

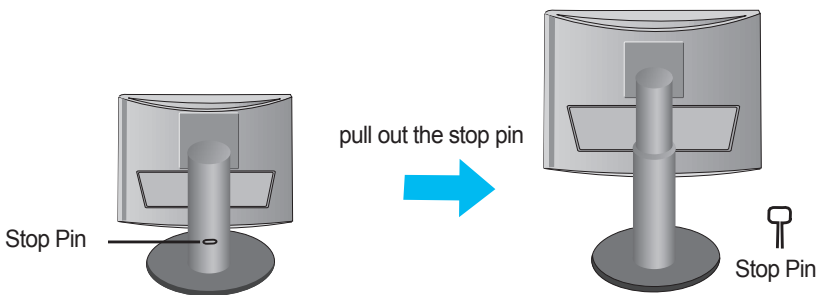
1. Place the monitor with its front facing downward on a cushion or soft cloth.
2. Assemble the Stand Base into the Stand Body.

Be sure don't pull out the Stop Pin and make the Stand Base direction as shown.



3. Make the monitor stand , then pull out the Stop Pin.

Warning: The tape and locking pin may only be removed from those monitors equipped with a standing base when the base is pulled up. Otherwise, you may be injured by the protruding sections of the stand.



Important

- This illustration depicts the general model of connection. Your monitor may differ from the items shown in the picture.
- Do not carry the product upside down holding only the stand base. The product may fall and get damaged or injure your foot.

Before Connecting to the PC

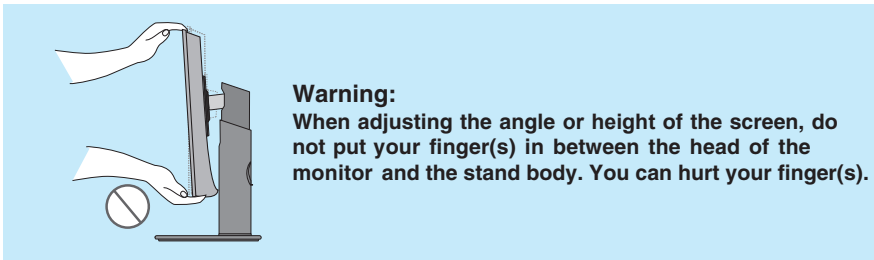
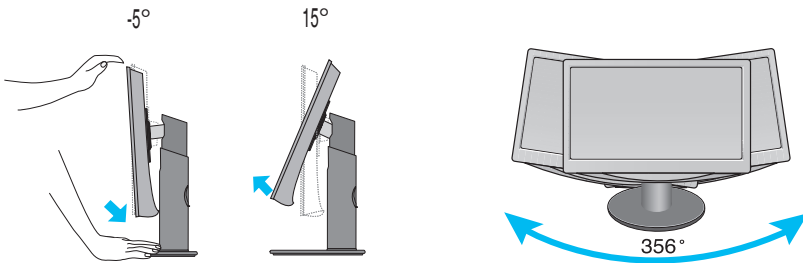
- Before setting up the product, ensure that the power supply, the computer system, and other attached devices is turned off.

Positioning your display

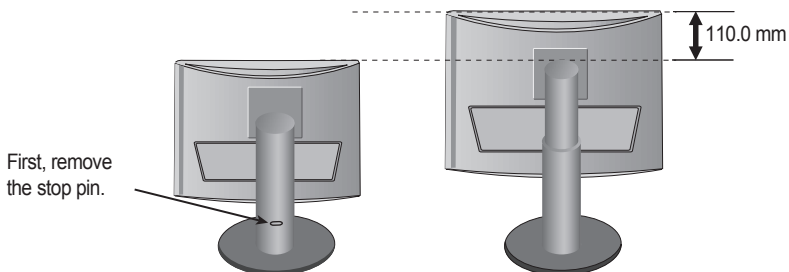
1. Adjust the position of the panel in various ways for maximum comfort.

■ **Tilt Range:** $-5^{\circ} \sim 15^{\circ}$

■ **Swivel:** 356°



■ **Height Range:** maximum 4.33 inch (110.0 mm)

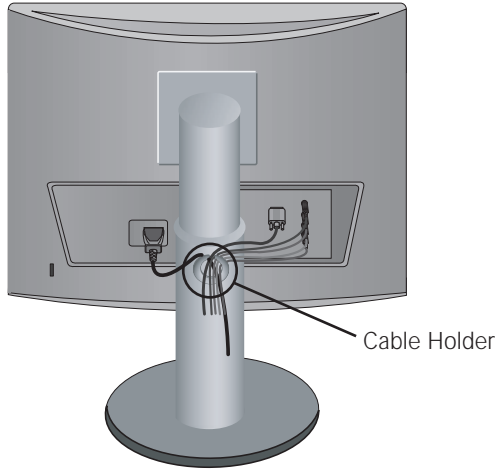


Ergonomic

It is recommended that in order to maintain an ergonomic and comfortable viewing position, the forward tilt angle of the monitor should not exceed 5 degrees.

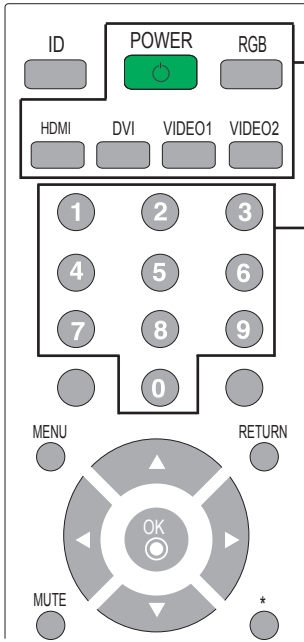
To arrange cables using cable management

1. Tie cables together with a cable management as shown in the illustration.



Name and Function of the Parts

● Name of the Remote Control Buttons



POWER

Turn the monitor on or off.

RGB, HDMI, DVI, VIDEO1, VIDEO2

Select input sources.

Number buttons

Used for input ID.

MENU

Use this button to enter the On Screen Display menu.

MUTE

Switches the sound on or off.

RETURN

Return one step.

▲ ▼ ◀ ▶ Buttons

Able to change channel.

OK Button

Use when functional adjustment is completed.

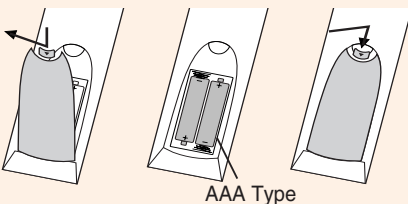
Double press the OK button, then Auto Config. **(Only RGB input)**

*

There is not a function which is supported.

■ **NOTE** : In case of weak stereo sound signals, with stereo or Nicam stereo transmission, select mono reception.

● Inserting batteries into remote control.



1. Take out the battery cap.

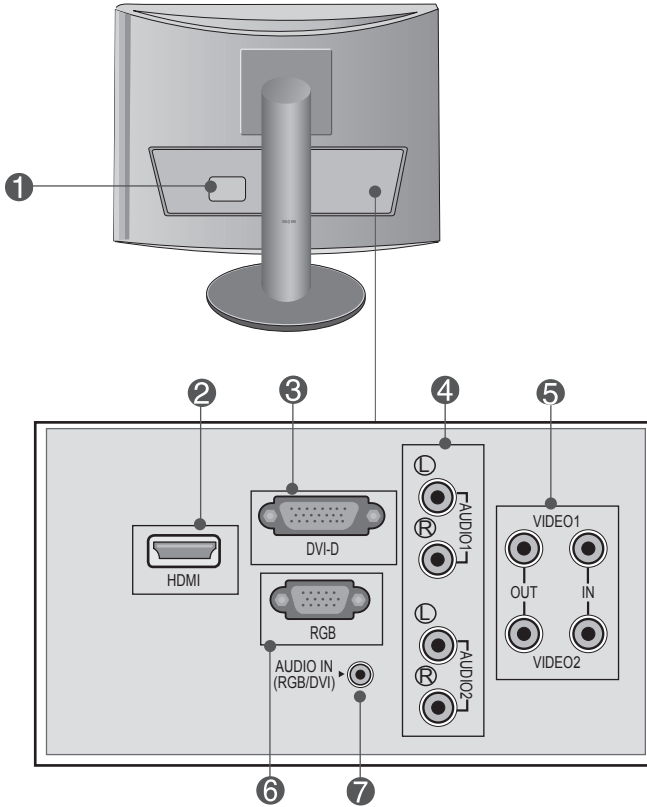
2. Insert the batteries with correct polarity (+/-).

3. Close the battery cap.

- Dispose of used batteries in the recycle bin to prevent environmental pollution.

Name and Function of the Parts

● Rear View



- ① Power Connector : Connect the power cord.
- ② HDMI Digital Signal Connector
- ③ DVI Digital Signal Connector
- ④ AV Sound Jack(AUDIO Input)
- ⑤ AV Input / Output terminal
- ⑥ RGB Analog Signal Connector
- ⑦ RGB, DVI Sound Jack : Connect to the jack in the PC sound card.

Connecting to External Devices

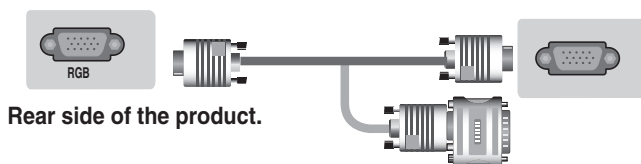
■ ■ ■ Connecting to your PC

1. First of all, see if the computer, product and the peripherals are turned off. Then, connect the signal input cable.

Rear side of the product.



- A Connecting with the D-Sub signal input cable.



Rear side of the product.

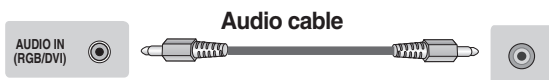
Macintosh Adapter (Not included)
Use the standard Macintosh adapter since an incompatible adapter is available in the market.
(Different signaling system)

- B Connecting with the DVI signal input cable.



Rear side of the product.

2. Connect the audio cable.

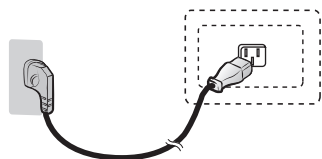


Rear side of the product.

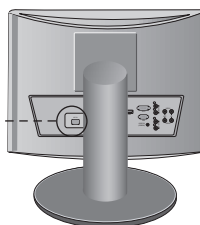
- Make sure to check the sound card connection terminal in the PC before connecting to the product. If the PC sound card supports both Speaker Out and Line Out, change it to Line Out by setting the jumper or the PC application. (For more details, refer to the sound card user's guide.)
 - **Speaker Out** : The terminal connected to the speaker that is not equipped with an amplifier.
 - ***Line Out** : The terminal connected to the speaker equipped with an amplifier.If Audio Out in the PC sound card has only Speaker Out, reduce the PC volume. This product is integrated with an amplifier.

Connecting to External Devices

3. Connect the power cord.



Rear side of the product.



4. ① Turn on power by pressing the power button on the product.



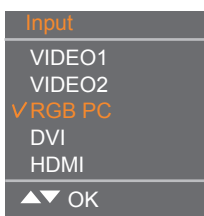
Power button

② Turn on the PC.

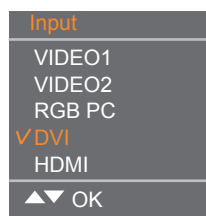
5. Select an input signal.

Press the input source button on the remote control to select the input signal. Or, press the INPUT button at the top side of the product.

A • Select RGB



B • Select DVI



Each time you press the Input button it will change to VIDEO1 → VIDEO2 → RGB PC → DVI → HDMI.

If nothing is inputted for several seconds the screen will automatically move to the selected menu.



Note

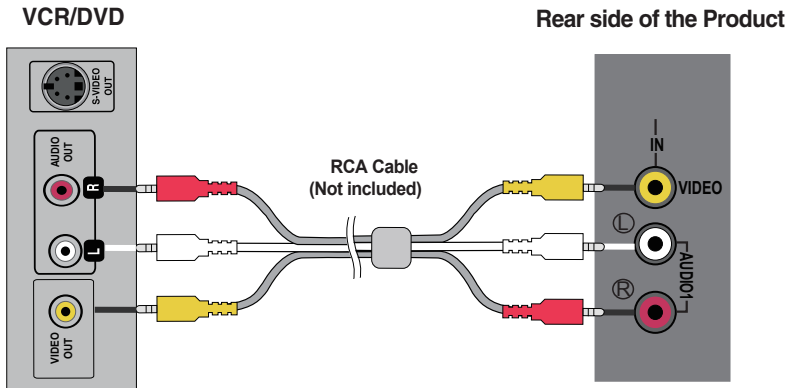
- Directly connect to a grounded power outlet on the wall or a power bar with a ground wire.

Connecting to External Devices

■ ■ ■ Connecting to VCR/DVD

1. Connect the video/audio cable as shown in the figure below and then connect the power cord.

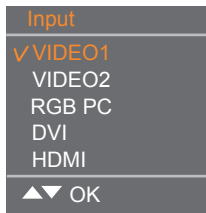
- Connect the input terminal with a proper colour match.



2. Select an input signal.
Press the input source button on the remote control to select the input signal.
Or, press the INPUT button at the top side of the product.

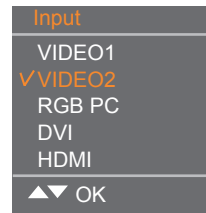
- (A) When connecting with VIDEO1.

- Select VIDEO1



- (B) When connecting with VIDEO2.

- Select VIDEO2



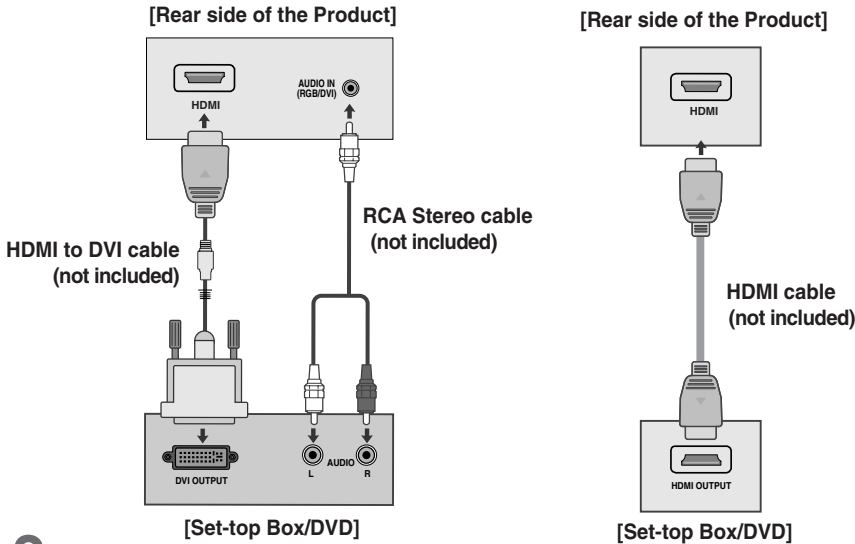
Each time you press the Input button it will change to VIDEO1 → VIDEO2 → RGB PC → DVI → HDMI.

If nothing is inputted for several seconds the screen will automatically move to the selected menu.

Connecting to External Devices

■ ■ ■ When watching HDMI from the DVD/Set-top Box

1. Connect the HDMI cable as shown in the below figure and then connect the power cord.



2. Select an input signal.

Press the input source button on the remote control to select the input signal.
Or, press the INPUT button at the top side of the product.

- Select HDMI



Each time you press the Input button it will change to VIDEO1 → VIDEO2 → RGB PC → DVI → HDMI.
If nothing is inputted for several seconds the screen will automatically move to the selected menu.

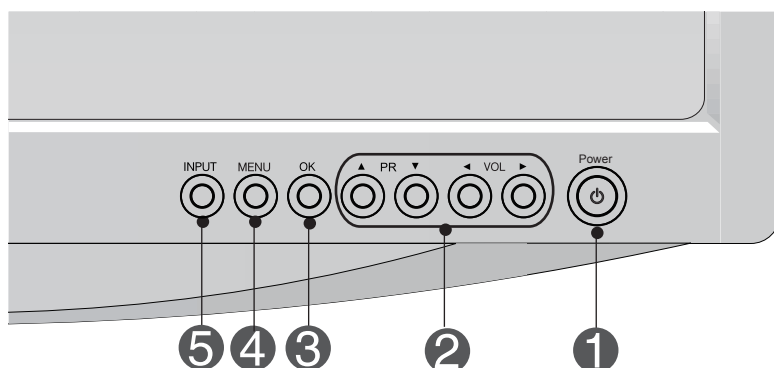


Note

- HDMI Input does not support PC mode. If it is connected PC, the screen may not be displayed properly.

Adjusting the Screen

● Screen Adjustment options



1

Power Button

- Use this button to turn the product on and off.

2

OSD Select/Adjust Button

- Use this button to select an icon or adjust the setting in the OSD screen.

- ▼▲ • Adjust the up and down.

- ◀▶ • Adjust the volume.



3

OK Button

- OK button is usually used in choosing the MENU. When there is no MENU on the screen pushing the OK button will give the information about the current input source.

4

MENU Button

- Use this button to show/hide the OSD (On Screen Display) menu screen.

Adjusting the Screen

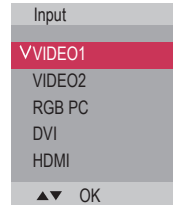
5 Screen Adjustment options

5

INPUT Button

VIDEO1
VIDEO2
RGB PC
DVI
HDMI

CVBS
CVBS
D-Sub analog signal
DVI Digital signal
HDMI Digital signal







Each time you press the Input button it will change to VIDEO1 → VIDEO2 → RGB PC → DVI → HDMI.

If nothing is inputted for several seconds the screen will automatically move to the selected menu.

Adjusting the Screen

OSD Menu

Icon	Function Description
 Picture	Adjusts screen brightness, contrast and color that you prefer.
 Audio	Adjusts the audio options.
 Time	Adjusts the timer options.
 Option	Adjusts the screen status according to the circumstances.



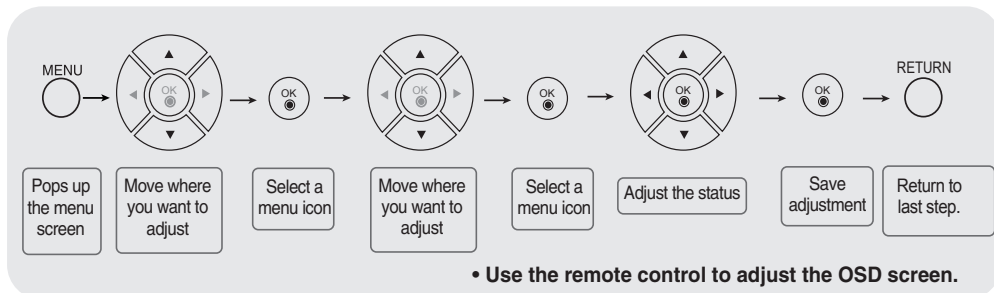
Note

OSD(On Screen Display)

The OSD function enables you to adjust the screen status conveniently since it provides graphical presentation.

Adjusting the Screen

● How to adjust the OSD (On Screen Display) screen



- 1 Press the **MENU** Button, then the main menu of the OSD appears.
- 2 To access a control, use the ▼ ▲ Buttons.
- 3 When the icon you want becomes highlighted, press the **OK** Button.
- 4 Use the ▼ ▲ ◀ ▶ Buttons to adjust the item to the desired level.
- 5 Accept the changes by pressing the **OK** Button.
- 6 Exit the OSD by pressing the **RETURN** Button.

● How to adjust the screen automatically

Press the OK button (OK button on a remote Control) twice in the PC analog signal. Then optimal screen settings will be selected that fit into the current mode. If adjustment is not satisfactory, you can adjust the screen manually.

[For PC Analog signal]

Auto in progress
For optimal display change
resolution to 1360 X 768

LSM1850

Auto in progress
For optimal display change
resolution to 1920 X 1080

LSM2150

Adjusting the Screen

On-Screen Menu Language Selection

Installation guide menu appears on product screen when it is turned on for the first time.



Press the **▼▲◀▶** button and then, **OK** button to select your desired language.

* If you want to change Language selection

1. Press the **MENU** button and then **▼▲** button to select the **Option** menu.
2. Press the **▶** button and then **▼▲** button to select Language.
The menus can be shown on the screen in the selected language.
3. Press the **▶** button and then **▼▲◀▶** button to select your desired language.
4. Press the **OK** button.

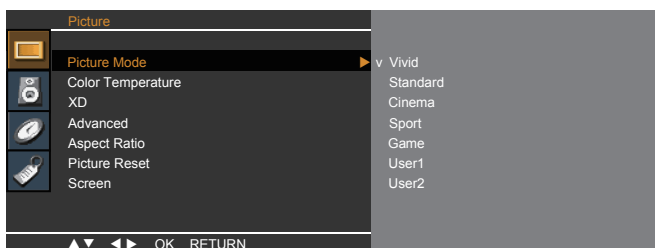
Note

- If you don't finish set up Installation Guide by pressing **MENU** button or time out of OSD (On Screen Display) display, it will continuously appear until completing set up whenever the set is turned on.

Adjusting the Screen

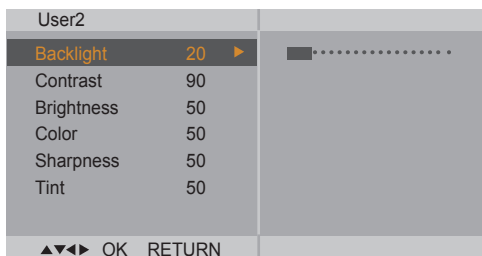
Adjusting Screen Color

Picture Mode



Toggles between screen presets.

- **Vivid** : Select this option to display with a sharp image.
- **Standard** : The most general and natural screen display status.
- **Cinema** : Select this option to lower brightness by one level.
- **Sport** : Select this option to display with a soft image.
- **Game** : To enjoy dynamic image when playing a game.
- **User1,2** : Select this option to use the user-defined settings.



Backlight : To control the brightness of the screen,adjust the brightness of LCD panel.

Contrast : Adjust the difference between the light and dark levels in the picture.

Brightness : To adjust the brightness of the screen.

Color : To adjust the color to desired level.

Sharpness : To adjust the clearness of the screen.

Tint :To adjust the tint to desired level.

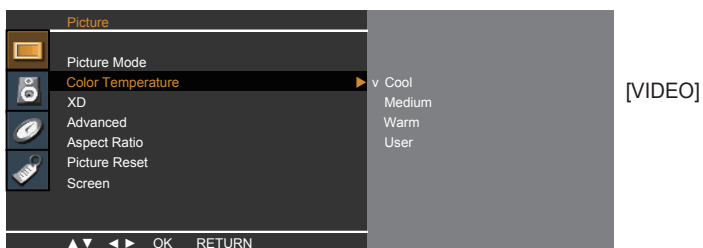


If the 'Picture Mode' setting in the **Picture** menu is set to **Vivid, Standard, Cinema, Sport** or **Game** the subsequent menus will be automatically set.

Adjusting the Screen

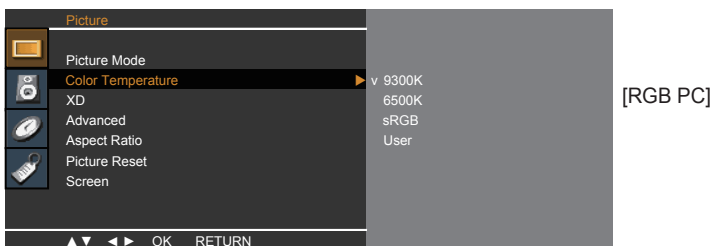
Adjusting Screen Color

Color Temperature

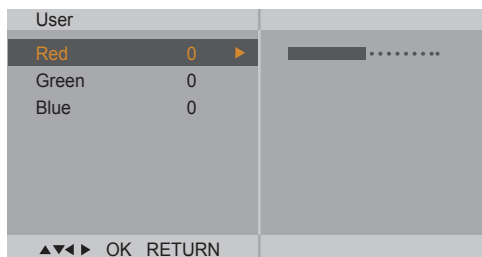


Color Settings

- **Cool** : Slightly purplish white.
- **Medium** : Slightly bluish white.
- **Warm** : Slightly reddish white.
- **User** : Select this option to use the user-defined settings.



- **9300K**
Slightly purplish white.
- **6500K**
Slightly bluish white.
- **sRGB**
Slightly lower brightness.



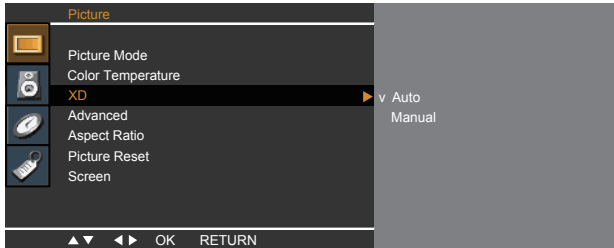
Red / Green / Blue
Set your own color levels.

Adjusting the Screen



Adjusting Screen Color

- XD** XD is LG Electronics' unique picture improving technology that displays a real **HD** source through an advanced digital signal processing algorithm. This function is not available in **RGB-PC** or **DVI** modes. This menu is activated after selecting **User1** or **User2** of **Picture Mode**.



- **Auto** : XD is automatically changed to Auto.
- **Manual** : When selecting the Manual, you can adjust the **XD Contrast**, **XD Colour**, **XD NR**.

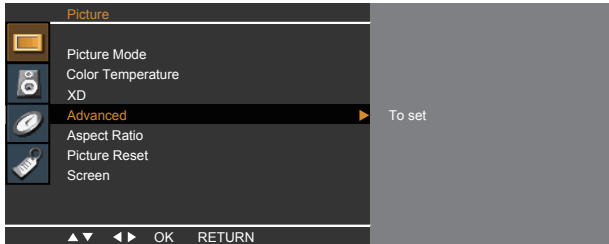
- **XD Contrast** : Optimizing the contrast automatically according to the brightness of the reflection.
- **XD Colour** : Adjusting the colors of the reflection automatically to reproduce as closely as possible to natural colors.
- **XD NR** : Removing the noise up to the point where it does not damage the original picture.

Adjusting the Screen

Adjusting Screen Color

Advanced

This function is available only in **VIDEO1,VIDEO2** modes.



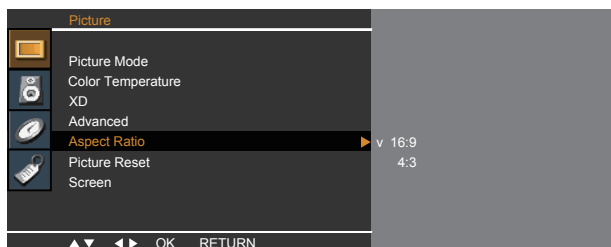
- **Gamma** : Set your own gamma level : Low,Medium,High.
On the monitor, high gamma values display whitish images and low gamma values display blackish images.
- **Cinema** : When you watch a movie, this function adjusts the set to the best picture appearance.
- **Black Level** : adjusts the contrast and the brightness of the screen using the black level of the screen.

- **Low** : The reflection of the screen gets brighter.
- **High** : The reflection of the screen gets darker.

Adjusting the Screen

Adjusting Screen Color

Aspect Ratio To select the image size of the screen.



- 16:9** Widescreen mode.

- Original** The aspect ratio is not adjusted from the original. It is set by the program being watched.

- 4:3** This picture format is 4:3 aspect ratio.

- 14:9** 14:9 programs are viewed normally in 14:9 with black bars added to the top and bottom. 4:3 programs are magnified on the top/bottom and left/right sides.

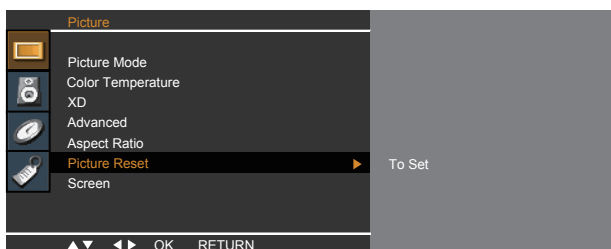
- Zoom1, 2** 4:3 programmes are magnified until they fill the 16:9 screen. The top and bottom will be cut off.

ARC	MODE	VIDEO	HDMI	DVI	RGB PC
	16:9	●	●	●	●
	Original	●	×	×	×
	4:3	●	●	●	●
	14:9	●	×	×	×
	Zoom1	●	×	×	×
	Zoom2	●	×	×	×

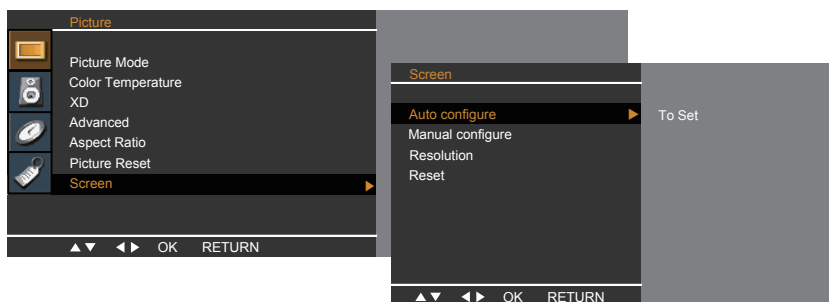
Adjusting the Screen

Adjusting Screen Color

Picture Reset Return **Picture Mode**, **Color Temperature**, **Advanced** to the default factory settings.



Screen Adjust the screen video. (RGB PC input only)



Auto Config. : This button is for the automatic adjustment of the screen position, clock and phase. This function is available for analog signals only.

Manual Config. : If the picture isn't clear after auto adjustment and characters are still trembling, adjust the picture phase manually.

* Phase, Clock function are available only in RGB.

Phase : To adjust the focus of the display. This item allows you to remove any horizontal noise and clear or sharpen the image of characters.

Clock : To minimize any vertical bars or stripes visible on the screen background. The horizontal screen size will also change.

H-Position : Moving the screen position horizontally.

V-Position : Moving the screen position vertically.

Resolution: To view the best resolution of RGB-PC mode. Select the same resolution on OSD with PC's. It's working at RGB-PC mode when vertical frequency is 60Hz.

Reset: Return **Manual config.** to the default factory settings.

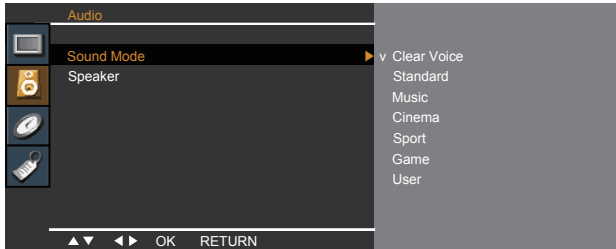
Adjusting the Screen



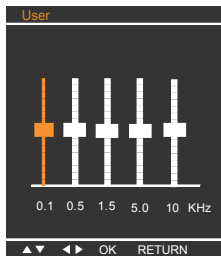
Adjusting the audio function

Sound Mode

The best sound tone quality will be selected automatically depending on the video type that you're currently watching.



- **Clear Voice** : By differentiating the human sound range from others, it helps users listen to human voices better.
- **Standard** : The most commanding and natural audio.
- **Music** : Select this option to enjoy the original sound when listening to the music.
- **Cinema** : Select this option to enjoy sublime sound.
- **Sport** : Select this option to watch sports broadcasting.
- **Game** : To enjoy dynamic sound when playing a game.
- **User** : Select this option to use the user-defined audio settings.



Speaker

You can adjust internal speaker status.

If you want to use your external hi-fi stereo system, turn off the internal speakers of the set.



Note

When connected to your computer and the 'Sound Mode' setting in the audio menu is **Clear Voice**, **Standard**, **Music**, **Cinema** or **Sport**, the available menu is **Speaker**.

Adjusting the Screen



Adjusting the time function



Clock

This function is used to set up of current time.

You must set the time correctly before using **On/Off time** function.

- 1) Press the **MENU** button and then use **▼▲** button to select the **TIME** menu.
- 2) Press the **▶** button and then use **▼▲** button to select the **Clock** menu.
- 3) Press **▶** button and then use **▼▲** button to set the hour(00~23).
- 4) Press **▶** button and then use **▼▲** button to set the minutes(00~59).
The default value is -- : --.
- 5) Press the **OK/MENU** button to save.

Off/On time

The **Off time** automatically switches the set to off mode at the pre-set time.

- 1) Press the **MENU** button and then use **▼▲** button to select the **TIME** menu.
- 2) Press the **▶** button and then use **▼▲** button to select **Off time** or **On time**.
- 3) Press the **▶** button and then use **▼▲** button to set the hour(00~23).
- 4) Press the **▶** button and then use **▼▲** button to set the minutes(00~59).
- 5) Press the **▶** button and then use **▼▲** button to select **On** or **Off**.
- 6) Only **On time** function; Press the **▶** button and then **▼▲** button to adjust volume level and programme number.
- 7) Press the **OK/MENU** button to save.

Sleep Timer

The power is automatically turned off when the time set by a user is passed.

- 1) Press the **MENU** button and then use **▼▲** button to select the **Sleep Timer** menu.
- 2) Press the **▶** button and then use **▼▲** button to select the minutes(10,20,30,60,90,120, 180,240) or off.
- 3) Press the **OK/MENU** button to save .

Auto sleep

If **Auto sleep** is active and there is no input signal, the set switches to off mode automatically after 10 minutes. (It is not working in PC)

- 1) Press the **MENU** button and then use **▼▲** button to select the **Auto sleep** menu.
- 2) Press the **▶** button and then use **▼▲** button to select **On** or **Off**.
- 3) Press the **OK/MENU** button to save .



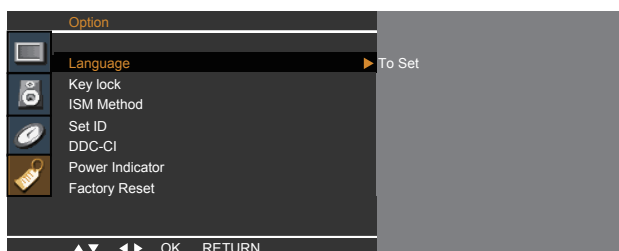
Note

- In the event of power interruption (disconnection or power failure), the **Clock** must be reset.
- Two hours after the set is switched on by the **On time** function it will automatically switch back to off mode unless a button has been pressed.
- Once the **On** or **Off time** is set, these functions operate daily at the preset time.
- **Off time** function overrides **On time** function if they are set to the same time.
- The set must be in off mode for the **On time** to work.
- **On time** will move on to auto off if no activity is received in 2hours after setting the **On time**.

Adjusting the Screen



Selecting the options



Language

To choose the language in which the control names are displayed.

Key Lock

Use the ▼▲ buttons to select **On** or **Off**. The monitor can be set up so that it can only be used with the remote control. This feature can prevent unauthorized viewing.

In order to lock the OSD screen adjustment, set the **Key Lock** tab to the 'On' position.

In order to unlock it, do the following :

- Push the **MENU** button on the remote control and set **Key Lock** to the 'Off' position.

ISM Method

A frozen or still picture from a PC/Video game displayed on the screen for prolonged periods could result in a ghost image remaining even when you change the image. Avoid allowing a fixed image to remain on the screen for a long period of time.

Normal : Leave on normal if you don't foresee image burn in being a problem.

White wash : White wash fills the screen with solid white. This helps removes permanent images burned into the screen. A permanent image may be impossible to clear entirely with white wash.

Orbiter : May help prevent ghost images. However, it is best not to allow any fixed image to remain on the screen. To avoid a permanent image on the screen, the screen will move every 2 minutes.

Inversion : This function inverts the panel color of the screen. The panel color is automatically inverted every 30 minutes.

Dot Wash : This function moves the black dots of the screen. The black dots is automatically moved every 5 second.

Set ID

You can assign a unique **Set ID** NO (name assignment) to each product when several products are connected for display. Specify the number (1~99) using the ▼▲ button and exit. Use the assigned **Set ID** to individually control each product using the Product Control Program.

DDC-CI

DDC/CI(Display Data Channel Command Interface) is communication protocol for communications between PC and monitor.

DDC/CI makes it possible to adjust and setup detailed functions on PC instead of the monitor OSD.

Monitor can be adjusted with PC by connecting communication between PC and monitor when DDC/CI is ON, and monitor cannot be adjusted with PC because communication between PC and monitor is disconnected when DDC/CI is OFF.

Power Indicator

Use this function to set the power indicator on the front side of the product to **On** or **Off**.

Factory Reset

Select this option to return to the default factory settings.

Check the following before calling for service.

No image appears	
<ul style="list-style-type: none">● Is the power cord of the display connected?	<ul style="list-style-type: none">• Check and see if the power cord is connected properly to the power outlet.
<ul style="list-style-type: none">● Is the power indicator light on?	<ul style="list-style-type: none">• Press the Power button.
<ul style="list-style-type: none">● Is the power indicator amber?	<ul style="list-style-type: none">• If the display is in power saving mode, try moving the mouse or pressing any key on the keyboard to bring up the screen.• Try to turn on the PC.
<ul style="list-style-type: none">● Do you see an "OUT OF RANGE" message on the screen?	<ul style="list-style-type: none">• This message appears when the signal from the PC (video card) is out of horizontal or vertical frequency range of the display. See the 'Specifications' section of this manual and configure your display again.
<ul style="list-style-type: none">● Do you see a "CHECK SIGNAL CABLE" message on the screen?	<ul style="list-style-type: none">• This message appears when the signal cable between your PC and your display is not connected. Check the signal cable and try again.

Do you see a "OSD LOCKED" message on the screen?	
<ul style="list-style-type: none">● Do you see "OSD LOCKED" when you push MENU button?	<ul style="list-style-type: none">• You can secure the current control settings, so that they cannot be inadvertently changed. You can unlock the OSD controls at any time by pushing the MENU button for several seconds: the message "OSD UNLOCKED" will appear.

Display image is incorrect

- | | |
|---|--|
| <ul style="list-style-type: none">● Display Position is incorrect. | <ul style="list-style-type: none">• Press the OK button twice to automatically adjust your display image to the ideal setting. If the results are unsatisfactory, adjust the image position using the H position and V position icon in the on screen display. |
| <ul style="list-style-type: none">● On the screen background, vertical bars or stripes are visible. | <ul style="list-style-type: none">• Press the OK button twice to automatically adjust your display image to the ideal setting. If the results are unsatisfactory, decrease the vertical bars or stripes using the CLOCK icon in the on screen display. |
| <ul style="list-style-type: none">● Any horizontal noise appearing in any image or characters are not clearly portrayed. | <ul style="list-style-type: none">• Press the OK button twice to automatically adjust your display image to the ideal setting. If the results are unsatisfactory, decrease the horizontal bars using the PHASE icon in the on screen display.• Check Control Panel --> Display --> Settings and adjust the display to the recommended resolution or adjust the display image to the ideal setting. Set the color setting higher than 24 bits (true color). |

Important

- Check **Control Panel --> Display --> Settings** and see if the frequency or the resolution were changed. If yes, readjust the video card to the recommend resolution.
- If the recommended resolution (optimal resolution) is not selected, letters may be blurred and the screen may be dimmed, truncated or biased. Make sure to select the recommend resolution.
- The setting method can differ by computer and O/S (Operation System), and resolution mentioned above may not be supported by the video card performance. In this case, please ask to the computer or the video card manufacturer.

Display image is incorrect

- | | |
|--|---|
| <ul style="list-style-type: none">● The screen color is mono or abnormal. | <ul style="list-style-type: none">• Check if the signal cable is properly connected and use a screwdriver to fasten if necessary.• Make sure the video card is properly inserted in the slot.• Set the color setting higher than 24 bits (true color) at Control Panel - Settings. |
| <ul style="list-style-type: none">● The screen blinks. | <ul style="list-style-type: none">• Check if the screen is set to interlace mode and if yes, change it to the recommend resolution. |

Do you see an "Unrecognized monitor, Plug&Play (VESA DDC) monitor found" message?

- | | |
|---|---|
| <ul style="list-style-type: none">● Have you installed the display driver? | <ul style="list-style-type: none">• Be sure to install the display driver from the display driver CD (or diskette) that comes with your display. Or, you can also download the driver from our web site: http://www.lge.com.• Make sure to check if the video card supports Plug&Play function. |
|---|---|

Display	18.51 inches (47.01 cm) Flat Panel Active matrix-TFT LCD Anti-Glare coating Visible diagonal size: 47.01 cm 0.100*0.100 mm pixel pitch		
Sync Input	Horizontal Freq.	Analog : 30 - 61 kHz (Automatic) Digital : 30 - 61 kHz (Automatic)	
	Vertical Freq.	56 - 75 Hz (Automatic)	
	Input Form	Separate TTL, Positive/Negative Digital (HDCP)	
Video Input	Signal Input	15 pin D-Sub Connector DVI - D Connector (Digital)	
	Input Form	RGB Analog (0.7 Vp-p/ 75 ohm), Digital	
Resolution	Max	Analog : VESA 1366 x 768 @ 60 Hz Digital : VESA 1366 x 768 @ 60 Hz	
	Recommend	VESA 1360 x 768 @60 Hz	
Plug&Play	DDC 2B		
Power Consumption	On Mode	: 35W(Typ.)	
	Sleep Mode	≤ 2 W	
	Off Mode	≤ 1 W	
Dimensions & Weight	With Stand		Without Stand
	Width	45.44 cm / 17.89 inches	45.44 cm / 17.89 inches
	Height	35.65 cm / 14.04 inches	31.10 cm / 12.24 inches
	Depth	45.65 cm / 17.97 inches 27.11 cm / 10.67 inches	7.58 cm / 2.98 inches
	Net	5.89 kg (13.09 lbs)	
Tilt Range	Tilt -5° ~ 15°		
Power Input	AC 100-240V~ 50/60Hz 0.8A		
Environmental Conditions	Operating Conditions		
	Temperature	10°C to 35°C	
	Humidity	20% to 80%	
	Storage Conditions		
Temperature	-10°C to 60°C non-Condensing		
Humidity	5% to 90% non-Condensing		
Stand Base	Attached (<input type="checkbox"/>), Detached (<input type="checkbox"/>)		
Power cord	Wall-outlet type or PC-outlet type		

NOTE

- Information in this document is subject to change without notice.

Display	21.53 inches (54.68 cm) Flat Panel Active matrix-TFT LCD Anti-Glare coating Visible diagonal size: 54.68 cm 0.248*0.248 mm pixel pitch		
Sync Input	Horizontal Freq.	Analog : 30 - 83 kHz (Automatic) Digital : 30 - 83 kHz (Automatic)	
	Vertical Freq.	56 - 75 Hz (Automatic)	
	Input Form	Separate TTL, Positive/Negative Digital (HDCP)	
Video Input	Signal Input	15 pin D-Sub Connector DVI - D connector (Digital)	
	Input Form	RGB Analog (0.7 Vp-p/ 75 ohm), Digital	
Resolution	Max	Analog : VESA 1920 x 1080 @60 Hz Digital : VESA 1920 x 1080 @60 Hz	
	Recommend	VESA 1920 x 1080 @60 Hz	
Plug&Play	DDC 2B		
Power Consumption	On Mode	: 45W(Typ.)	
	Sleep Mode	≤ 2 W	
	Off Mode	≤ 1 W	
Dimensions & Weight		With Stand	Without Stand
	Width	51.96 cm / 20.46 inches	51.96 cm / 20.46 inches
	Height	36.83 cm / 14.50 inches	34.96 cm / 13.76 inches
		46.83 cm / 18.44 inches	
	Depth	27.11 cm / 10.67 inches	7.80 cm / 3.07 inches
Net	6.68 kg (14.84 lbs)		
Tilt Range	Tilt	-5° ~ 15°	
Power Input	AC 100-240V~ 50/60Hz 1.0A		
Environmental Conditions	Operating Conditions		
	Temperature	10°C to 35 °C	
	Humidity	20 % to 80 %	
	Storage Conditions		
Temperature	-10°C to 60 °C non-Condensing		
Humidity	5 % to 90 % non-Condensing		
Stand Base	Attached (<input type="checkbox"/>), Detached (<input type="radio"/>)		
Power cord	Wall-outlet type or PC-outlet type		

NOTE

- Information in this document is subject to change without notice.

Preset Modes (Resolution)

PC Mode

■ 18 inch monitor

	Display Modes (Resolution)	Horizontal Freq. (kHz)	Vertical Freq. (Hz)
1	720 x 400	31.468	70
2	640 x 480	31.469	60
3	640 x 480	37.500	75
4	800 x 600	37.879	60
5	800 x 600	46.875	75
6	1024 x 768	48.363	60
7	1024 x 768	60.123	75
8	1280 x 768	47.776	60
*9	1360 x 768	47.712	60
10	1366 x 768	47.700	60

*Recommend Mode

■ 21 inch monitor

	Display Modes (Resolution)	Horizontal Freq. (kHz)	Vertical Freq. (Hz)
1	720 x 400	31.468	70
2	640 x 480	31.469	60
3	640 x 480	37.500	75
4	800 x 600	37.879	60
5	800 x 600	46.875	75
6	1024 x 768	48.363	60
7	1024 x 768	60.123	75
8	1152 x 864	67.500	75
9	1280 x 1024	63.981	60
10	1280 x 1024	79.976	75
11	1680 x 1050	64.674	60
12	1680 x 1050	65.290	60
*13	1920 x 1080	66.587	60

*Recommend Mode

Indicator

MODE	LED Color
On Mode	blue
Sleep Mode	amber
Off Mode	Off

Preset Modes (Resolution)

DTV Mode

■ 18 inch monitor

	Display Modes (Resolution)	Horizontal Freq. (kHz)	Vertical Freq. (Hz)
1	720 x 480	31.47	60
2	720 x 480	31.50	60
3	720 x 576	31.25	50
4	1280 x 720	37.50	50
5	1280 x 720	44.96	60
6	1280 x 720	45.00	60
7	1920 x 1080	33.72	60
8	1920 x 1080	33.75	60
9	1920 x 1080	28.125	50

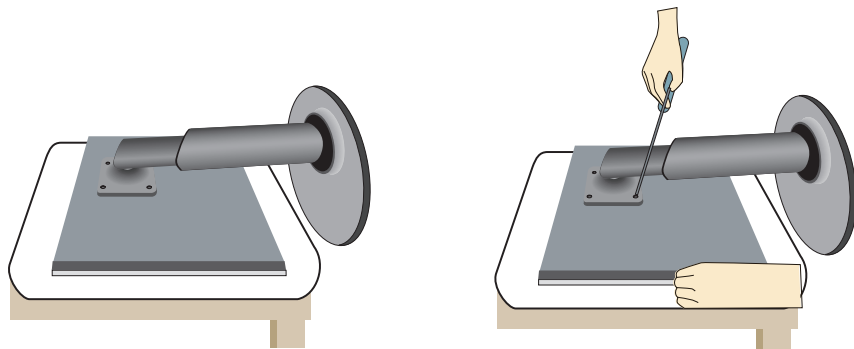
■ 21 inch monitor

	Display Modes (Resolution)	Horizontal Freq. (kHz)	Vertical Freq. (Hz)
1	720 x 480	15.75	60
2	720 x 480	15.73	60
3	720 x 576	15.625	50
4	720 x 480	31.47	60
5	720 x 480	31.50	60
6	720 x 576	31.25	50
7	1280 x 720	44.96	60
8	1280 x 720	45.00	60
9	1280 x 720	37.50	50
10	1920 x 1080	33.72	60
11	1920 x 1080	33.75	60
12	1920 x 1080	28.125	50
13	1920 x 1080	67.43	60
14	1920 x 1080	67.50	60
15	1920 x 1080	56.25	50
16	1920 x 1080	27.00	24
17	1920 x 1080	33.75	30

Installing the Wall mount plate

This monitor satisfies the specifications of the Wall mount plate or the interchange device.

1. Place the monitor with its front facing downward on a soft cloth.
2. Separate the stand after firstly separating 4 screws by using a driver as figure.

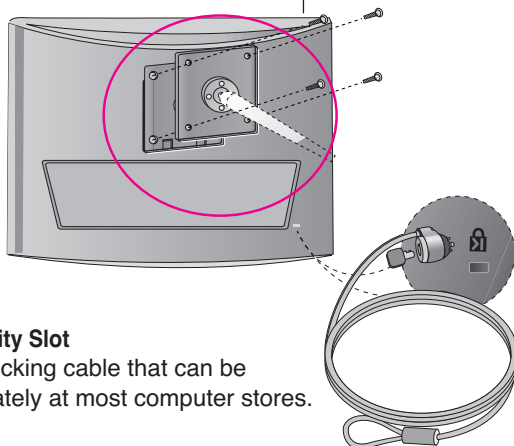


3. Install the Wall mount plate.

Wall mount plate(Seperate purchase)

This is stand-type or wall mount type and is connectable with Wall mount plate.

Please refer to the installation guide for more details, which is provided when Wall mount plate is purchased.



Kensington Security Slot

Connected to a locking cable that can be purchased separately at most computer stores.

Digitally yours ■■■■■.....

