

Highlights

Congratulations on your subscription to the LSP-4000(P) Fixed Wireless Phone. This phone has been designed to operate on the IS-2000 Air Protocol over the 800MHz band. And the phone has the advanced user interface similar to mobile phone. It has greatly enhanced voice clarity and provides various advanced features.

Key phone features:

- ▶ PCO Feature (PCO Product Only)
- ▶ Display is 3 lines text + 1 Icon line. Yellow/Green LCD & Keypad back light
- ▶ Polyphonic Ring tones: A choice of 10 melodies and 5 bell sounds available
- ▶ Large Phonebook with 300 entries
- ▶ Speed Dialling for up to 300 numbers
- ▶ The phone can store upto 30 Received Call, 30 Dialed Call, 30 Missed Call and 30 In Call Memo in the Call History
- ▶ 3 Way call conferencing

- ▶ Hands free Speaker Phone
- ▶ Receiver Off-Hook tone
- ▶ Recent Call History can be dialled by Dial / Flash key
- ▶ Adjustable Ringer volume, Key volume, Earpiece volume
- ▶ Fast charging battery.

Contents

1. Important Information	4	3.7 Receiving a Call	17
1.1 Safety Instruction	4	3.8 In Call Memo	17
1.2 Optimal Phone Performance	4	3.9 Lock Mode	17
1.3 Care and Service	5	3.10 Entering and Editing Information	18
1.4 Safety Information	6		
2. Introduction	9	4. Menu Tree	20
2.1 Front View of the Phone	9	4.1 Menu	23
2.2 LCD Display	10	4.2 Message	30
2.3 Installation	11	4.3 Find	34
2.4 Installation Steps	14		
3. Basic Operations	15	5. Speaker Phone	39
3.1 Making a Call	15	6. Troubleshooting	40
3.2 Messaging	15	7. General Information	41
3.3 Redialing Last Number	15	7.1 Main unit	41
3.4 3 way call conferencing	16	7.2 AC/DC Adapter	41
3.5 Call Waiting	16	7.3 BATTERY	42
3.6 Volume Control	16		
		Limited Warranty Statement	43

Important Information

1.1 Safety Instruction

WARNING / CAUTION

To reduce the risk of fire or electric shock, do not expose this phone to rain or moisture. Do not use this phone in swimming pools or other water bodies.

1.2 Optimal Phone Performance

- ▶ Do not hold the antenna when operating the phone, or operate the phone when someone is within four inches (ten centimeters) of the antenna. Both cases affect the call quality and may cause the phone to operate at a higher power level than required.
- ▶ For the best call quality, keep the antenna free from obstructions and position the antenna upright.
- ▶ Do not use the phone if the antenna is damaged. Replace the damaged antenna immediately by a qualified technician. Use only a manufacturer-approved antenna.
Non-approved antennas, modifications or attachments may impair call quality and damage the phone.

- ▶ RF energy may affect improperly installed or inadequately shielded personal medical devices such as pace-makers or hospital monitors. Consult the manufacturer of any personal medical devices to determine whether they are adequately shielded from external RF energy. Turn your phone OFF in health care centers if any regulations posted in the area instruct you to do so. Hospitals or health care centers may be using equipment that may be sensitive to external RF energy.
- ▶ If this phone causes harmful interference to radio or television reception, which can be determined by turning the equipment off and on, the user is encouraged to try to correct the interference by one or more of the following measures:
 - Reorient or relocate the receiving antenna
 - Place the radio or television farther away from the phone.
 - Connect the equipment to an outlet on a circuit different from that to which the phone is presently connected.
 - Consult the Authorized LGE Dealer for assistance of an experienced radio/TV technician.

- ▶ Use battery, antenna and AC/DC power adapter provided by LGE. Using parts made by any other manufactures may invalidate the warranty.
- ▶ Only authorized personnel should service the phone and its accessories. Faulty installation or service can be dangerous and may invalidate the warranty.
- ▶ Do not use the phone in any designated “cellular phone use” area.
- ▶ Avoid using the phone in high temperature or humidity.
- ▶ Avoid spilling any liquid on the phone. If the phone gets wet, turn the power off immediately. If the phone doesn't work, please contact the service provider immediately.
- ▶ Avoid shock or impact.
- ▶ We recommend you to charge the backup battery before initial use. The backup battery may be discharged during delivery.
- ▶ In order to comply with FCC RF Exposure requirements, this device must be installed such that there is a minimum separation distance of 20 cm between the antenna and all persons during normal operation.

Important Information

1.3 Care and Service

Before cleaning, always unplug the phone from the wall outlet and remove the antenna (or disconnect the antenna cable). Do not use liquid or aerosol cleaners; use a damp cloth for cleaning.

If the phone doesn't work, do not attempt to disassemble it, contact the authorized LGE Service center for assistance.

If any of the following conditions exist, unplug the phone from the wall plug, remove the battery and call the qualified engineer.

- ▶ The power supply cord is damaged or frayed.
- ▶ Liquid has spilled into the phone.
- ▶ The phone has been exposed to rain or water.
- ▶ The phone has been dropped or damaged.
- ▶ The phone does not function normally even after following the operating instructions.

Important Information

1.4 Safety Information

WARNING

- ▶ For safety, use only an adapter approved by LG.

LG does not bear responsibility for any faults that may arise due to non-conformation to this guide.

Example: LSP-4000(P)

(LG Power Adapter Source: DC 5V / 1A)

- ▶ Do not, in any way, cause a short-circuit. It may start a fire or the phone may explode causing injury.
- ▶ Do not create a sudden impact on the battery by throwing it. Do not dispose off batteries by putting them in a fire. They may explode or catch fire due to the electrolyte within.



CAUTION

- ▶ Do not use the phone with a car battery. It may cause electric shock, fire, breakdown or transformation.
- ▶ Avoid using the phone in high temperature or humidity. Avoid spilling any liquid on this phone. If the phone gets wet, Switch off phone and turn off AC power supply.
- ▶ Keep the phone dry. Submersion, humidity, and liquids contain minerals that may corrode internal electronic circuits.
- ▶ Do not store or use the phone in dusty or dirty areas as this can damage the moving parts.
- ▶ Do not store the phone in hot areas. High temperatures can shorten the life of electronic devices, damage batteries, and



- warp or melt certain plastics.
- ▶ Do not store the phone in cold areas. When the phone warms up to its normal operating temperature, moisture can form inside the phone, which can damage the internal electronic circuit boards.
- ▶ Do not attempt to open it. Non-expert handling of the phone could damage it. It may cause fire, electric shock and breakdown. Consult your authorized LG dealer for assistance.
- ▶ Do not drop, knock or shake the phone. Rough handling may break the internal circuit boards.
- ▶ Do not use harsh chemicals, cleaning solvents or strong detergents to clean the phone. Wipe it with a soft cloth that has been slightly dampened in a mild soap and water solution.



Important Information

- ▶ Do not paint the phone. Paint can clog the phone's moving parts and prevent proper functioning.
- ▶ During lightning, do not touch the power plug or the phone line. It may result in an electric shock or death.
- ▶ Do not install the phone under direct sunlight or on an uneven surface.
- ▶ Before using the plug, check the available power voltage. Inaccurate power voltage may cause fire and damage. Example: LSP-4000(P) Input Voltage: 100 ~ 240V.
- ▶ Do not plug many power cords into one outlet. It may cause fire or electric shock.

Important Information



▶ Do not remodel the power cord or disassemble it. If the power cord or plug is impaired, do not use it. It may cause fire or electric shock.



▶ Do not install the phone in an ill-ventilated place. It may cause fire or a breakdown.



▶ Do not touch the plug with wet hands. When disconnecting the power cord of any accessory, grasp and pull out the plug itself and not the cord. It may cause fire or electric shock.



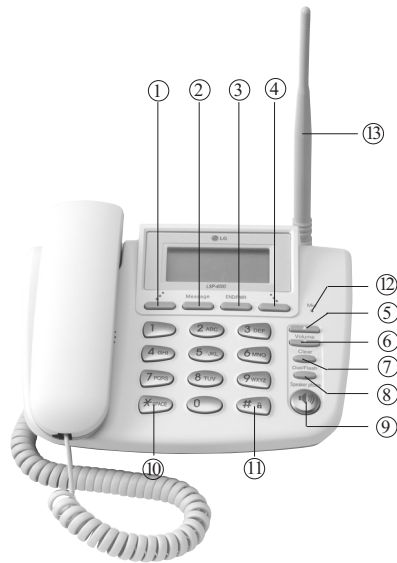
▶ Do not put heavy objects on the power cord. Do not bend the power cord too much. It may cause fire or electric shock.



▶ Use only an LG-approved battery and adapter. If not, it may cause an explosion or result in a short-circuit. LG does not bear any responsibility for the damage.

▶ When you disconnect the power cord of any accessory, grasp and pull the plug itself and not the cord. It may cause the adapter to breakdown.

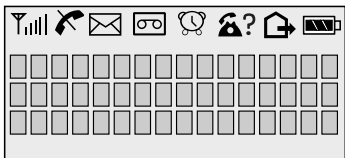
2.1 Front View of the Phone



- ① Soft key 1 : Activates Main Menu state
- ② Message : Activates SMS Menu state
- ③ END/PWR : Deactivates states, or Power ON/OFF
- ④ Soft key 2 : Activates Find Menu state
- ⑤ Up Key (▲) : Moves up in the Menu or Volume Up
- ⑥ Down Key (▼) : Moves down in the Menu or Volume Down
- ⑦ Clear : Deletes the last digit, or moves previous Menu
- ⑧ Dial/Flash : Activates Dial/Flash state, or views Call History
- ⑨ (📞) : Activates hands free speaker phone function
- ⑩ * : Inputs Symbol '*', or makes a phone input 'space' during text entry operation.
- ⑪ # : Inputs Symbol '#', or makes a phone lock after long-press.
- ⑫ MIC : Microphone for hands free speaker phone function.
- ⑬ Antenna : Attached Antenna

2.2 LCD Display

The LCD shows icons on the top of the LCD screen. Different indicators appear based on the phone's operating mode.



Icon	Operating Condition
	RSSI indicator: Indicates the signal strength in the service area.
	No service: The phone is not receiving any system signal.
	In use: Displayed when a call is in progress or the phone is in offhook state.
	Text message: Displayed when a text message is received.
	Voice message: Displayed when a voice message is received.
	Alarm: Displayed when alarm time is set.
	Incoming Call Indicator : Displayed when the Incoming Call is received
	Not used
	Battery charge level: Indicates charged battery level.

2.3 Installation

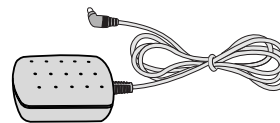
You should follow each step carefully as shown below in order to guarantee the proper operation of CDMA Fixed Wireless Phone.



Main Unit



Dipole Antenna



AC/DC Power Adapter



User Guide

STEP I. Check Components

▶ The following components are supplied Fixed Wireless Phone.

1. LSP-4000(P) Main Phone with Handset
(Including inner backup battery) -1 EA-
2. Dipole Antenna -1 EA-
3. AC/DC Power Adapter -1 EA-
4. User Guide -1 EA-

▶ Please make sure that these components are present before you begin to install the phone. If any of the components are missing or damaged, contact your service provider immediately.

STEP II. Place the Terminal

▶ Place the phone on the stable flat surface area (desk, table, etc.). Serious damage may result if the phone is dropped. Do not place the phone within 1 meter of heaters or radiators.

This phone is designed for desktop usage. Avoid the

direct exposure to sunlight and dampness.

▶ Read the SAFETY INFORMATION located in the first part of this document before you place the phone.

STEP III. Connect Components (Please refer to "Installation Steps" in 2.4)

▶ Connect the antenna to the TNC antenna connector located at the top of the phone.

If you have placed the phone on a flat surface, position the antenna upright.

▶ Connect the curl cord of the handset to the RJ-11 port located on the left side of the phone.

▶ Connect the AC/DC Adapter cable to the DC input port located at the top of the phone.

- If it is correct, a beep tone will be heard.

- If it is not correct (Booting fails or beep tone is not heard), you will have to reconnect the adapter or reset the battery switch to "on".

▶ Please observe the following to get better voice quality.

1. Keep away from electrical appliances such as TV, computer, radio etc.
2. Keep the phone in a high and central location without any obstructions.
3. Raise the integral antenna of the phone to get maximum strength as shown in the figure.



STEP IV. Check the LCD Display

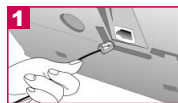
▶ After you follow the installation instruction step I to step III, please check the LCD for normal operation.

▶ If you do not see the status of service, please repeat the 4th instruction of step III.

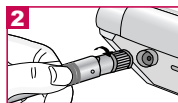
Then confirm the status of phone to get the proper signal strength from the service operator system.

2.4 Installation Steps

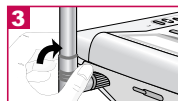
Please follow the procedure below to install the phone properly.



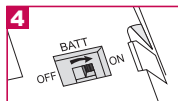
1 Connect basehandset to the handset connector.



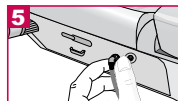
2 Connect the antenna to the TNC connector (Turn right).



3 Turn the antenna upright.



4 When you first use the phone, please Turn "on" the battery switch.



5 Connect the AC power supply.



6 Press END/PWR button to operate initially.

Notice

- ▶ Before using the phone, please check that the battery switch is "on".
- ▶ After switching if on, use the phone.
- ▶ When charging the battery, check that the battery switch is "on".
- ▶ The battery will be charged only when the battery switch is "on".

3.1 Making a Call

You can make a call as follows.

1. Pick up the handset or press button.
2. Listen for dial tone.
3. Enter the phone number with area code if needed.
4. Wait for the Auto Time-out or Press **Dial/Flash** button.
5. The call is connected and you may start conversation.
6. To disconnect the call, replace the handset or press button.

When the user presses the Dial/Flash button after dialing any desired number, if the user picks up the handset or presses the Speaker Phone button, the phone makes a call immediately.

3.2 Messaging

You can send or receive a short message. If you want to send SMS, press **Message** button + 1 **Write** in on-hook state and write "send to" number / message that you want and send your message. When the message received in idle state or during a call, you can confirm your message as follows.

1. Press **Message** button + 2 (**Inbox**) + 1 (**View SMS**).
2. Press Soft key 1 **View** to confirm desired message.

3.3 Redialing Last Number

You can make a redial to last number, shown in All Calls.

1. Pick up the handset or press button.
2. Listen for dial tone.
3. Press **Dial/Flash** button.

Basic Operations

- The call is connected and you may start conversation.
 - To disconnect the call, replace the handset or press **Mute** button.
- ※ You can also dial any of the last 120 (Missed+Received+Dialed+In Call Memo) numbers stored in All Calls.

3.4 3 way call conferencing

You can start 3 way call conferencing.

- Dial second party phone number while you are in conversation with the first party.
- To make conference call, press '3' + **Dial/Flash** button.
This service should be provided by your service provider.

3.5 Call Waiting

While a call is in progress, you may hear two beeps indicating another incoming call.

When call wait is enabled, you may put the active call on hold while you answer the other incoming call.

- Press **Clear** or **END/PWR** button, Call Waiting window then disappears.
- Press **Dial/Flash** button, you may start conversation with called number.
- Re-press **Dial/Flash** button, you may start conversation with previous number.

3.6 Volume Control

- Press **Up/Down** button of navigation while in a call, to adjust earpiece volume.
- Press Soft key 2 **Mute** to prevent sound from your end during the call. To cancel Mute, Press again Soft key 2 **Unmute**.

..... **Message** **END/PWR**

Soft Key 1

Soft Key 2

To scroll in Menu, press **▲** or **▼** button.

- Press Soft key 1 **Menu** + 3(**Mic Level**) during a call and select Low or High by pressing Soft key 2 **Next** or Press **Up/Down** button, to adjust MIC volume. (Not used In PCO product)

3.7 Receiving a Call

When the bell rings in idle state, you can receive a call as follows

- Pick up the handset or press the **Speaker Phone** button.
- Start a conversation.
- To disconnect the call, replace the handset or press the **Speaker Phone** button.

Basic Operations

3.8 In Call Memo (Not used In PCO product)

Allow you to store number during the call.

To store number:

- Press Soft key 1 **Menu** + 1 (**In Call Memo**).
- Enter up to 32 numbers using the keypad.
- Press Soft key 1 **Add** to save.

To retrieve an In Call Memo:

- Press **Dial/Flash** button to see saved number.

Note: You can store the number by pressing Soft key 1 **Add**.

3.9 Lock Mode

Protects your phone from unauthorized use. Once the phone is locked, it is in restricted mode, until the in lock code is entered. This will allow you to receive

phone calls and still make emergency calls. The lock code/password on your phone is "0000" by default.

If you need to modify the lock code, you may modify it using the change code within the security Menu [4.1.4.6 page no. 29].

You can lock your phone using the '#' (🔒:Lock) key, also you can lock your phone manually as explained [4.1.4.1 page no. 27].

Under Lock Mode

1. Press '#' button for some time.

The phone is now locked.

2. To unlock, press Soft key 1 **Unlock**.

••••• Message END/PWR •••••

Soft Key 1

Soft Key 2

3. Enter unlock code. (Default "0000").

3.10 Entering and Editing Information

You can edit the phone book and short messages using various text input mode.

Key Functions

Soft key 2 : Press to scroll and select a mode through menus.

- Soft key 2 : Press to scroll and select a mode through Menus. You can scroll through the modes using Soft key 2 in the following order: ABC, abc, Sym1, Sym2.

-  Space key : Press to insert a space.

- Clear key : Press to delete a single space or character. Press and hold to delete entire words.

Input Mode

Text Input provides four modes for entering text, special characters, and punctuation.

- **ABC / abc Mode** : Use ABC or abc mode to input text in English.

⇒ ABC Mode : All subsequent letters are capitalized.

⇒ abc Mode : All subsequent letters are lowercase.

- **Sym1 / Sym2 Mode** : Insert special characters and punctuation. You may use any of the special characters. When the special characters are displayed, you can select the number corresponding to the character that you want to input.

- For number entry, first select the key button you want to input in ABC / abc mode and then press the key button until the number is displayed.

4. Menu Tree

Main MENU	Sub-MENU	Setting Value
1. Menu		
1. Sound	1. Ring Type	1 5ea. Midi(10ea) + Bell(5ea)
	2. Ringer Volume	4 steps
	3. Key Volume	5 steps (including silent step)
	4. EarpieceVolume	4 steps
2. Settings	1. Alarm	Set Time / Set Ringer
	2. Version	Ok / More
	3. Backlight	Always Off / For 10 Seconds / For 30 Seconds / Always On
3. Dial Features	1. Hot Line	Disable / Enable
	2. Hot Line Time	2-9 Sec
	3. Auto Time Out	2-9 Sec
	4. Speed Dialing	Enable / Disable
4. Security	1. Lock Mode	Disable / Enable
	2. Clear Calls	Yes / No
	3. Clear Memory	Yes / No

Main Menu	Sub-Menu	Setting Value
	4. Emergency Calls	Emergency 1 / Emergency 2 / Emergency 3
	5. Restrict Call	Set Restrict / Permit Memory / Deny Memory
	6. Change Code	Ok / Back
5. My Number		Ok / Edit
2. Message		
1. Write		ABC / abc / Sym 1 / Sym 2
2. Inbox	1. View SMS	View / Erase
	2. Voice Mail	Reply / Erase
	3. Erase All	Yes / No
3. Outbox	1. View	View / Erase
	2. Erase All	Yes / No
4. Settings	1. MSG Alert	Off / Once / Every 2 Min
	2. MSG Ringer	SMS Alarm 1 ~ 5
	3. Defer Delivery	Immediate / After 30 Min. / After 1 Hour / After 2 Hours / After 12 Hours / After 1 Day / After 2 Days

Main Menu	Sub-Menu	Setting Value
	4. Valid Period	Default / 30 Minutes / 1 Hour / 2 Hours / 12 Hours / 1 Day / 2 Days
	5. Auto DEL Inbox	Disable / Enable
3. Find		
1. Call History	1. All Calls	View / Erase
	2. Missed	View / Erase
	3. Received	View / Erase
	4. Dialed	View / Erase
	5. In Call Memo	View / Erase
	6. Erase History	Erase All Calls / Erase Missed / Erase Received / Erase Dialed / Erase Memo
2. Phone Book	1. By Name	Find / ABC
	2. By Address	Find
	3. By Number	Find

4.1 Menu

You may select from five Main Menu (Sound, Settings, Dial Features, Security, My Number) for this item.

If you press Soft key 1 **Menu** is activated.

..... **Message** **END/PWR**

Soft Key 1

Soft Key 2

To scroll in Menu, press ▲ or ▼ button.

To return to the initial screen, press **END/PWR** button and to return to the previous screen, press Clear button.

4.1.1 Sound

Allows you to set various volume settings and Ring Type.

Press Soft key 1 **Menu** + 1 (**Sound**) in on-hook state.

4.1.1.1 Ring Type

You can select the various ring types.

1. Press Soft key 1 **Menu** + 1 (**Sound**) + 1 (**Ring Type**) in on-hook state.
2. Press Up/Down button or Soft key 2 **Next** to select desired ring type.
3. Press Soft key 1 **Ok** to save setting.

Note: Choose from 15 different ring types.

4.1.1.2 Ringer Volume

You can adjust the ringing volume level of incoming call alert.

1. Press Soft key 1 **Menu** + 1 (**Sound**) + 2 (**Ringer Volume**) in on-hook state.
2. Press **Up/Down** button or Soft key 2 **Next** to adjust Ring Volume.
3. Press Soft key 1 **Ok** to save setting.

4.1.1.3 Key Volume

The tone when you press a key can be adjusted.

1. Press Soft key 1 **Menu** + 1(**Sound**) + 3(**Key Volume**) in on-hook state.
2. Press **Up/Down** button or Soft key 2 **Next** to adjust key volume.
3. Press Soft key 1 **Ok** to save setting.

4.1.1.4 Earpiece Volume

The voice of the other party can be adjusted.

1. Press Soft key 1 **Menu** + 1(**Sound**) + 4(**Earpiece Volume**) in on-hook state.
2. Press **Up/Down** button or Soft key 2 **Next** to adjust earpiece volume.
3. Press Soft key 1 **Ok** to save setting.

Note : Press Up/Down button to adjust the volume during a conversation.

4.1.2 Settings

You can use additional features like Alarm, Version, Backlight etc.

Press Soft key 1 **Menu** + 2(**Settings**) in on-hook state.

4.1.2.1 Alarm

[Set Time]

This function allows you to set alarm time.

1. Press Soft key 1 **Menu** + 2(**Settings**) + 1(**Alarm**) + 1(**Set Time**) in on-hook state.
2. Press **Up/Down** button or Soft key 2 **Next** to select from Off, Once or Always and press Soft key 1 **Ok** .
3. Enter alarm time and press Soft key 1 **AM/PM** and **select** AM or PM.
4. If you want to modify the time, press **Clear** button and reset.

5. Press Soft key 2 **Ok** to save and exit.

[Set Ringer]

This function allows you to select ringer for alarm alert.

1. Press Soft key 1 **Menu** + 2(**Settings**) + 1(**Alarm**) + 2(**Set Ringer**) in on-hook state.
2. Press Up/Down button or Soft key 2 **Next** to select from Alarm Ring 1, Alarm Ring 2, Alarm Ring 3, Alarm Ring 4 or Alarm Ring 5.
3. Press Soft key 1 **Ok** to save and exit.

4.1.2.2 Version

You can confirm your phone S/W version.

1. Press Soft key 1 **Menu** + 2(**Settings**) + 2(**Version**) in on-hook state.
2. To confirm next page, press Soft key 2 **More** , and press Soft key 1 **Ok** to exit.

4.1.2.3 Backlight

Allows you to choose the settings of the LCD and keypad backlight.

1. Press Soft key 1 **Menu** + 2(**Settings**) + 3(**Backlight**) in on-hook state.
2. Select among Always Off / For 10 Seconds / For 30 Seconds / Always On

4.1.3 Dial Features

Press Soft key 1 **Menu** + 3(**Dial Features**) in on-hook state.

4.1.3.1 Hot Line

HotLine automatically calls to registered number by passing setup time in off-hook state.

1. Press Soft key 1 **Menu** + 3(**Dial Features**) + 1(**Hot Line**) in on-hook state.

2. Press **Up/Down** button or Soft key 2 **Next** to select Enable or Disable and press Soft key 1 **Ok**.
3. Press Soft key 2 **Edit** and enter the Hot Line phone number.
4. Press Soft key 1 **Ok** to save and exit.

If you have selected 'Enable' and enter the HotLine Number and Time,

HotLine functions as follows:

When you pick up the handset or press **Call** button, the phone automatically dials the HotLine Number that you have already saved if any number is not dialed for duration specified in HotLine Time.

4.1.3.2 Hot Line Time

1. Press Soft key 1 **Menu** + 3(**Dial Features**) + 2(**Hot Line Time**) in on-hook state.

2. Press **Up/Down** button or Soft key 2 **Next** to select hot line connection time (2~9 Sec.).
3. Press Soft key 1 **Ok** to select.

4.1.3.3 Auto Time Out

Setting the length of time the phone waits before automatically dialing a number. You can select this duration to be between 2 and 9 seconds.

1. Press Soft key 1 **Menu** + 3(**Dial Features**) + 3(**Auto Time Out**) in on-hook state.
2. Press Up/Down button or Soft key 2 **Next** to select Auto Time Out between 2 and 9 Sec.
3. Press Soft key 1 **Ok** to select.

4.1.3.4 Speed Dialing

This function allows you to make a call faster by just pressing a corresponding number.

Up to 300 memory locations can be assigned for speed dial. To speed dialing press the memory number (1 through 300) corresponding to the appropriate memory location and hold for a few seconds.

⇒ This function can be used when the speed dialing is set to enable.

1. Press Soft key 1 **Menu** + 3(**Dial Features**) + 4(**Speed Dialing**) in on-hook state.
2. Press Up/Down button or Soft key 2 **Next** to select Enable or Disable.
3. Press Soft key 1 **Ok** to save and exit.

4.1.4 Security

4.1.4.1 Lock Mode

This function prevents the usage of your phone without your permission. You can protect your phone by 4 digits lock code/password. Possible settings are

Enable or Disable. Disable indicates that the phone is not locked. Enable sets the phone locks immediately.

1. Press Soft key 1 **Menu** + 4(**Security**).
2. Enter 4 digits lock code.
3. Press 1 (**Lock Mode**).
4. Press **Up/Down** button or Soft key 2 **Next** to select Enable or Disable.
5. Press Soft key 1 **Ok** to save and exit.

⇒ Default lock code is "0000".

4.1.4.2 Clear Calls

Clear Calls deletes complete Call History. Dialed, Received, Missed Calls & In Call Memo, all calls are deleted.

1. Press Soft key 1 **Menu** + 4(**Security**).
2. Enter lock code.
3. Press 2(**Clear Calls**).

4. Press **Up/Down** button or Soft key 2 **Next** to Select Yes or No.
5. Press Soft key 1 **Ok** to exit.

Note : Deleted call history can not be retrieved.

To return to the initial screen, press **END/PWR** button.

The phone can store a total of 120 Received, Dialed, Missed Calls and/or In Call Memos in Call History.

4.1.4.3 Clear Memory

This function allows you to erase complete phone book memory.

1. Press Soft key 1 **Menu** + 4(**Security**).
2. Enter lock code.
3. Press 3(**Clear Memory**).
4. Press **Up/Down** button or Soft key 2 **Next** to select Yes or No.
5. Press Soft key 1 **Ok** to exit.

Note : Deleted phone book memory can not be retrieved.

4.1.4.4 Emergency Calls

Emergency number can store up to three numbers (default 15, 16, 115).

1. Press Soft key 1 **Menu** + 4(**Security**) in on-hook state.
2. Enter lock code.
3. Press 4(**Emergency Calls**).
4. To edit a number, press Soft key 1 **Edit** .

4.1.4.5 Restrict Call

You can restrict your outgoing calls including numbers / numbers beginning with specified digit in the Deny Memory.

For example: If “9” is stored in the Deny Memory, all number beginning with “9” cannot be called. However

if “92” is stored in Permit Memory, you can call numbers beginning with “92” successfully.

1. Press Soft key 1 **Menu** + 4(**Security**) + 5(**Restrict Call**) + 1(**Set Restrict**) in on-hook state.
2. Select among No Restriction, Restriction or Emergency Only and press Soft key 1 **Ok** .
3. If **Restriction** is selected,
 - Enter the numbers / starting digit of specific numbers to be restricted in the Deny Memory.
 - Enter the number / starting digits of the numbers to be allowed in the Permit Memory.
 - Press Soft key 1 **Ok** to save and press **Clear** button to exit.
4. If **Emergency** Only is selected, your phone is enabled for only emergency numbers (default 15, 16, 115).

4.1.4.6 Change Code

Change Code allows you to enter a new four-digit lock code.

1. Press Soft key 1 **Menu** + 4(**Security**).
2. Enter lock code.
3. Press 6(**Change Code**).
4. Enter the new four-digit lock code that you want.
5. Press Soft key 1 **Ok** to go next state.
6. For confirmation, it will ask you to enter the new lock code again.
7. Press Soft key 1 **Ok** to save and press **Clear** or Soft key 2 **Back** button to exit.

4.1.5 My Number

You can confirm your phone number.

1. Press Soft key 1 **Menu** + 5(**My Number**) in

on-hook state.

2. Press Soft Key 1 **Ok** to exit.

Note : To modify your phone number, press Soft Key 2 **Edit** . Enter the phone number, and press Soft Key 1 **Ok** to save and exit.

4.2 Messages

Text messaging, page and voice mailbox become available as soon as the power is on.

You may access the above type of messages using the Message key. The phone can store up to 50 messages in each Inbox and Outbox.

If you press Message Key, SMS Menu is activated.

..... **Message** **END/PWR**

Soft Key 1

Soft Key 2

To scroll in SMS Menu, press ▲ or ▼ button.

At any point of time, to return to the initial screen, press **END/PWR** button and to return to the

previous screen, press Clear button.

In the list of Inbox, all sorts of the icon have the meaning as follows:

! : Unread message

V : Read message

4.2.1 Write

This function allows you to compose and send SMS.

1. Press **Message** + 1 (**Write**) in on-hook state.
2. Enter phone number or press Soft key 2 **Find** .
3. Write messages. Refer to the 3.10 (page 18) Entering and Editing Information about text input.
4. Select option as following.

Delivery ACK: This function allows you to know whether the messages have been successfully transmitted to the recipient. If you want to activate this function, set to Yes.

Store Message: This function allows you to choose whether the sent message shall be saved or not. You may select Yes or No.

Set Priority: This function allows you to give priority to message as Normal, Urgent or Emergency.

5. Press Soft key 1 **Ok** to send message.

4.2.2 Inbox

4.2.2.1 View SMS

Received messages are stored here.

1. Press **Message** + 2 (**Inbox**) + 1 (**View SMS**) in on-hook state.
2. To view desired message, select Soft key 1 **View** .
3. To reply the message, select Soft key 1 **Reply** .
4. To erase message, select Soft key 2 **Erase** .

⇒ For example, the meaning of (2/3) in View SMS is that 2 out of 3 messages are unread.

4.2.2.2 Voice Mail

Voice Mail notifications indicate the number of new voice messages in your mailbox.

Only the most recent voice mail notification will be stored in your phone, previous message will be overwritten.

1. Press **Message** + 2 (**Inbox**) + 2 (**Voice Mail**) in on-hook state.
2. Pick up the handset or press Speaker Phone button to make a call back your voice mailbox if the number of the voice mailbox is provided by the telecom service company's system.

4.2.2.3 Erase All

This function allows you to erase all received messages.

1. Press **Message** + 2(**Inbox**) + 3(**Erase All**) in on-hook state.
2. Press Up/Down button or Soft key 2 **Next** to select No or Yes.
3. Press Soft key 1 **Ok** to exit.

4.2.3 Outbox

4.2.3.1 View

All your successfully sent messages are saved here.

1. Press **Message** + 3(**Outbox**) + 1(**View**) in on-hook state.
2. To erase message, select Soft key 2 **Erase**.
3. To view or edit desired message, select Soft key 1 **Edit**.

4.2.3.2 Erase All

To erase all sending messages, select this function.

1. Press **Message** + 3(**Outbox**) + 2(**Erase All**) in on-hook state.
2. Press Up/Down button or Soft key 2 **Next** to select Yes or No.
3. Press Soft key 1 **Ok** to exit.

4.2.4 Settings

4.2.4.1 MSG Alert

This function allows you to set the frequency of notification when message is received.

1. Press **Message** + 4(**Settings**) + 1(**MSG Alert**) in on-hook state.
2. Select among Off, Once or Every 2 Min by pressing **Up/Down** button or Soft key 2 **Next**.
3. Press Soft key 1 **Ok** to save and exit.

4.2.4.2 MSG Ringer

This function allows you to set the ringer-type for notification when message is received.

You can select from 5 choices.

1. Press **Message** + 4(**Settings**) + 2(**MSG Ringer**) in on-hook state.
2. Select a desired ringer type by pressing **Up/Down** button or Soft key 2 **Next**.
3. Press Soft key 1 **Ok** to save and exit.

4.2.4.3 Defer Delivery

1. Press **Message** + 4(**Settings**) + 3(**Defer Delivery**) in on-hook state.
2. Select one of the following by pressing **Up/Down** button or Soft key 2 **Next** :
Immediate **After 30 Min** **After 1 Hour**
After 2 Hours **After 12 Hours** **After 1 Day**

3. Press Soft key 1 **Ok** to save.

4.2.4.4 Valid Period

1. Press **Message** + 4(**Settings**) + 4(**Valid Period**) in on-hook state.
2. Select desired time by pressing **Up/Down** button or Soft key 2 **Next** :
Default **30 Minutes** **1 Hour** **2 Hours**
12 Hours **1 Day** **2 Days**
3. Press Soft key 1 **Ok** to save.

4.2.4.5 Auto DEL Inbox

1. Press **Message** + 4(**Settings**) + 5(**Auto DEL Inbox**) in on-hook state.
2. Press **Up/Down** button or Soft key 2 **Next** to select Enable or Disable.

3. Press Soft key 1 **Ok** to save.

4.3 Find

This function allows you to search the phone numbers that you have stored in the phone book memory. You may search the numbers from call history also.

If you press Soft key 2, Find menu is activated.

..... **Message** **END/PWR**

Soft Key 1

Soft Key 2

To scroll in Menu, press **▲**, **◀**, **▶** or **▼** button.


To return to the initial screen, press **END/PWR** button and to return to the previous screen, press Clear button.

4.3.1 Call History

The phone can store upto 30 Received Call, 30 Dialed Call, 30 Missed Call and 30 In Call Memo in

the Call History.

When you press the **Dial/Flash** button, all calls are displayed. In the list of all calls, all sorts of the icons have the meaning as follows :

- Received : ←
- Dialed : →
- Missed : !
- In call Memo : ↙
- Call Waiting : ↘
- 3 Way Call : 

4.3.1.1 All Calls

[In on-hook state]

1. Press Soft key 2 **Find** + 1 (**Call History**) + 1 (**All Calls**) or **Dial/Flash** button.
2. Press **Up/Down** button to select a number or name in the call history list.

3. To view desired item, select Soft key 1 **View** .

4. To erase desired number, select Soft key 2 **Erase** .

5. Press Soft key 2 **Time** to see

more information and press Soft key 1 **Save** to save the number in the phone book.

- ▶ In PCO product, Press Soft key 2 **Next** to see more information and press Soft key 1 **Save** to save the number in the phone book.

[While in a Call]

1. Press Soft key 2 (**Find**) + 1 (**Call History**) + 1 (**All Calls**).
2. Press Up/Down button to select a number or name in the call history list.
3. To view desired item, select Soft key 1 **View** .
4. To erase desired number, select Soft key 2

Erase .

5. Press Soft key 2 **Time** to see more information and press Soft key 1 **Save** to save the number in the phone book.

- ▶ In PCO product, Press Soft key 2 **Time** to see more information and press Soft key 1 **Save** to save the number in the phone book.

4.3.1.2 Missed

1. Press Soft key 2 + 1 (**Call History**) + 2 (**Missed**) in on-hook state.
2. Press Up/Down button to select a number or name in the missed call list.
3. To view desired item, select Soft key 1 **View** .
4. To erase missed call, select Soft key 2 **Erase** .
5. Press Soft key 2 **Time** to see more information and press Soft key 1 **Save** to save the number in the phone book.

- ▶ In PCO product, Press Soft key 2 **Time** to see more information and press Soft key 1 **Save** to save the number in the phone book.

4.3.1.3 Received

1. Press Soft key 2 **Find** + 1(**Call History**)+ 3(**Received**) in on-hook state.
 2. Press Up/Down button to select a number or name in the received call list.
 3. To view desired item, select Soft key 1 **View** .
 4. To erase received call, select Soft key 2 **Erase** .
 5. Press Soft key 2 **Time** to see more information and press Soft key 1 **Save** to save the number in the phone book.
- ▶ In PCO product, Press Soft key 2 **Time** to see more information and press Soft key 1 **Save** to save the number in the phone book.

4.3.1.4 Dialed

1. Press Soft key 2 **Find** + 1(**Call History**)+ 4(**Dialed**) in on-hook state.
 2. Press Up/Down button to select a number or name in the dialed call list.
 3. To view desired item, select Soft key 1 **View** .
 4. To erase dialed number, select Soft key 2 **Erase** .
 5. Press Soft key 2 **Time** to see more information and press Soft key 1 **Save** to save the number in the phone book.
- ▶ In PCO product, Press Soft key 2 **Time** to see more information and press Soft key 1 **Save** to save the number in the phone book.

4.3.1.5 In Call Memo (Not used In PCO product)

1. Press Soft key 2 **Find** + 1(**Call History**)+ 5(**In Call Memo**) in on-hook state.

2. Press Up/Down button to select desired item in the In Call Memo list.
3. To view desired item, select Soft key 1 **View** .
4. To erase In Call Memo, select Soft key 2 **Erase** .
5. Press Soft key 2 **Time** to see more information and press Soft key 1 **OK** to save the number in the phone book.

4.3.1.6 Erase History

You may erase all history from five options (1. Erase AllCalls, 2. Erase Missed, 3. Erase Received, 4. Erase Dialed, 5. Erase Memo).

1. Press Soft key 2 **Find** + 1(**Call History**)+ 6(**Erase history**) in on-hook state.
2. Select history that you want to erase and press Soft key 1 **Ok** .

4.3.2 Phone Book

This function allows you to search the phone number in three way By Name, By Address and By Number, which you have stored in the phone book memory. Up to 300 entries can be listed here.

To store phone number

1. Enter the area code and phone number (Max. 32 digits) in on-hook state.
2. Press Soft key 1 **Save** .
3. Enter the name. Refer to the 3.10 (page 18) Entering and Editing Information about text input.
4. Enter the desired memory location.
5. The phone will display a message asking you whether to keep your number as secret or not. Select No or Yes using Up/Down button or Soft key 2 **Next** and press Soft key 1 **Ok** .

⇒ You will see a confirmation message and the status of memory used.

[Fast Searching]

Press Soft key 2 **Find** and press Soft key 2 **Find** again.

4.3.2.1 By Name

1. Press Soft key 2 **Find** + 2(**Phone Book**) + 1(**By Name**), to retrieve a phone number by name.
2. Enter the name you want and press Soft key 1 **Find** . To find all phone numbers you have stored, press Soft key 1 **Find** .

4.3.2.2 By Address


1. Press Soft key 2 **Find** + 2(**Phone Book**) + 2(**By Address**), to retrieve a phone number by address.
2. Enter a memory address to retrieve phone number and press Soft key 2 **Find** . To find all

phone numbers you have stored, press Soft key 2 **Find** .

4.3.2.3 By Number

1. Press Soft key 2 **Find** + 2(**Phone Book**) + 3(**By Number**), to retrieve a phone number by number.
2. Enter the phone number that you want to find and press Soft key 2 **Find** . To find all phone numbers you have stored, press Soft key 2 **Find** .

5. Speaker Phone

This function is a convenient feature, which enables you to make a call using the Speaker Phone () button in on-hook state.

6. Troubleshooting

Please check the following items before contacting Authorized LGE service center.

Item	Remedy
Phone doesn't operate at all.	<ul style="list-style-type: none"> • Check that the phone is installed correctly. • Check that the battery is fully charged. • Check that the power is on.
Because of noise and cross talking, call status is bad.	Keep away from electrical application such as TV, computer, radio and so on.
When buttons are pressed to call, can't hear the dial tone..	Check that phone cord or power is connected correctly.
Battery fails to charge.	Check that the authorized adaptor (5V/1A) for LSP-400RP is correctly connected to the DC power connector of the phone and Battery ON/OFF switch is ON.
Bell sound isn't heard	If bell sound is low, please adjust the volume level.
<ul style="list-style-type: none"> • The LCD repeats on and off when you plug-in the adapter while battery switch is off. • Phone repeats abnormally power-on and power-off after a few second when you plug-in the adapter while battery switch is on and phone is power-off. • There is no charging display when you plug-in the adapter while the phone is power on. 	Check that the adapter is the approved from LG. Adapter should be 5V(DC), 1A

7. General Information

7.1 Main unit

Item	LSP-4000(P)
Tx Frequency	Digital: 1850 ~ 1910 MHz
Rx Frequency	Digital: 1930 ~ 1990 MHz
Channel Bandwidth	1.25 MHz
Tx Power	Digital: LOWER: 62.5mW ~ UPPER:0.5W
Rx Sensitivity	-104 ~ -25dBm
Size	205x 161x 76 (L x W x H)
Weight(g)	554(included Li-ion battery)
Operating Temperature	-10 ~ 50° C

7.2 AC/DC Adapter

Item	SMPS Type Description
Rated Input Voltage	AC 100 ~ 240V
Operating Input voltage	AC 80 ~ 420V
Rated Input Frequency	50 / 60Hz
Operating Input Frequency	47 ~ 63Hz
Rated Output Voltage, Current	5V(DC), 1A

7.3 Battery

Item	Description
Capacity	3.7V Li-ion (Nominal)
Talk time / Standby time	4 Hours / 120 Hours
Charging time duration	3 Hours (Standby condition)

Limited Warranty Statement

LG ELECTRONICS Inc. represents and warrants that this subscriber unit and its accessories ("PRODUCT") is free from defects in material and workmanship.

This warranty is subject to the following terms and conditions;

1. This warranty of the PRODUCT extends for a period of 12 months commencing from the date of the activation or 16 months from the date of manufacture whichever is less, except for the battery, for which the warranty is 9 months from the date of activation or 12 months from the date of manufacture whichever is less.
2. During the warranty period, LG ELECTRONICS Inc. or its authorized service network will repair or replace, at LG ELECTRONICS Inc.'s option, the PRODUCT or any relevant parts thereof in the event that the PRODUCT is found to be defective.

The repaired PRODUCT or the Product/part provided as a replacement for a defective PRODUCT/part, shall be free from defects. The END USER/consumer purchaser of the PRODUCT or his/her assignee ("CONSUMER") shall not be

charged (whether for parts, labour or otherwise) for the repair or replacement of a defective PRODUCT during the warranty period. All replaced parts, boards or equipment shall become the property of LG ELECTRONICS Inc.

3. The warranty in respect of a repaired or replaced PRODUCT/part shall extend for the remaining warranty period of the repaired PRODUCT or replacement thereof to the CONSUMER.
4. Upon request from LG ELECTRONICS Inc., the CONSUMER may be required to provide the purchase receipt or other documentation or information in respect of the date and place of purchase.
5. The CONSUMER shall have no coverage or benefits under this warranty in the event that any of the following conditions are applicable:
 - (a) The PRODUCT has been subject to abnormal use or conditions, improper storage, exposure to excessive moisture or dampness, exposure to excessive temperatures, unauthorized modifications, unauthorized repair (including but not limited to use of unauthorized spare parts in

Limited Warranty Statement

repairs), abuse, accident, Acts of God, spills of food or liquids, improper installation and breakage or damage to antennae (otherwise than by reason of any defects in material or workmanship).

(b) LG ELECTRONICS Inc. has not been notified by the CONSUMER of the defects of the PRODUCT during the applicable warranty period.

(c) The PRODUCT serial number code or the accessory date code has been removed, defaced or altered.

(d) The PRODUCT has been used with or connected to an accessory (i) not supplied by LG ELECTRONICS Inc. or its affiliates, (ii) not fit for use with the PRODUCT or (iii) used otherwise than in the manner intended.

(e) The seals of the PRODUCT'S battery enclosure have been broken or show evidence of tampering or the PRODUCT'S battery has been used in equipment other than that for which it has been specified usable by LG ELECTRONICS Inc.

(f) All plastic surfaces and all other externally exposed parts that are scratched or damages due to normal customer use.

(g) Breakage or damage to antenna unless caused by defects in material or workmanship.

6. In order to derive benefits of this warranty in respect of any defects in the PRODUCT, the CONSUMER shall ship the PRODUCTS or part thereof at its cost to the authorized service center of LG ELECTRONICS Inc. LG ELECTRONICS Inc.

shall bear the cost of shipping the PRODUCT or part thereof back to the CONSUMER after the completion of the service under this limited warranty.

NO OTHER EXPRESS WARRANTY IS APPLICABLE TO THIS PRODUCT. THE DURATION OF ANY IMPLIED WARRANTIES, INCLUDING THE IMPLIED WARRANTY OF MARKETABILITY OR MERCHANTABILITY OR FITNESS FOR A PARTICULAR PURPOSE OR USE IS LIMITED TO THE DURATION OF THE EXPRESS WARRANTY HEREIN. LG ELECTRONICS Inc. SHALL NOT BE LIABLE FOR THE LOSS OF USE OF THE PRODUCT, INCONVENIENCE, LOSS OR ANY OTHER CONSEQUENTIAL DAMAGE, ARISING OUT OF THE USE OF, OR INABILITY OF USE, OF THIS PRODUCT OR FOR BREACH OF ANY EXPRESS OR

Limited Warranty Statement

IMPLIED WARRANTY, INCLUDING THE IMPLIED WARRANTY OF MARKETABILITY OR MERCHANTABILITY OR FITNESS APPLICABLE TO THIS PRODUCT.

THE CONSUMER UNDERSTANDS THAT LG ELECTRONICS INC. HAS EMBEDDED RELIANCE SOFTWARE AND ITS NETWORK PARAMETERS IN THE PRODUCT. IN CASE THE CONSUMER DELETES, REMOVES, ALTERS OR MODIFIES SUCH SOFTWARE AND THE PARAMETERS AND/OR INSTALLS ANY THIRD PARTY SOFTWARE, THE WARRANTY AND REMEDIES HEREUNDER SHALL NOT BE AVAILABLE TO THE CONSUMER.

7. It is hereby expressly clarified that all warranties (express or implied) in respect of the PRODUCT are provided by LG ELECTRONICS Inc. alone.

LGE CDMA Fixed Wireless Phone LSP-4000(P)

LGE CDMA Fixed Wireless Phone LSP-4000(P)

Licensed by QUALCOMM Incorporated under one or more of the following Patents:
U.S. Patent No. 4,901,307 U.S. Patent No. 5,056,109 U.S. Patent No. 5,099,204
U.S. Patent No. 5,101,501 U.S. Patent No. 5,103,459 U.S. Patent No. 5,107,225



P/N : MMBB0212101

JUN/2006/ISSUE 1.0
PRINTED IN KOREA