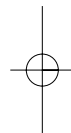


# | LST-270T | USER GUIDE

Please read this manual carefully before operating your set. Retain it for future reference.



# Table of Contents

<b>Before You Start</b>	<b>3</b>	<b>System Features</b>	<b>19</b>
1.1 Safety Instruction	3	4.1 Hook Flash	19
1.2 Optimal Phone Performance	3	4.2 ROH (Receiver Off Hook)	19
1.3 Care and Service	4	4.3 System Features	19
1.4 Safety Information	5	4.4 Applications	20
<b>Introduction</b>	<b>9</b>	<b>Programming</b>	<b>21</b>
2.1 Component List	9	5.1 Speed Dial	21
2.2 Front, Side and Rear View of the Terminal	10	5.2 Emergency Call	22
2.3 3 LEDs Indicators	12	5.3 Hot Line	23
2.4 Installation	13	5.4 Alarm	24
2.5 Installation Steps	16	5.5 Volume Level	25
<b>Basic Operation</b>	<b>17</b>	5.6 Outgoing Call Lock	26
3.1 Power On	17	5.7 Restrict Call Mode Setting	26
3.2 Placing a Call	17	<b>Troubleshooting</b>	<b>29</b>
3.3 Receiving a Call	18	<b>General Information</b>	<b>30</b>
3.4 Ending a Call	18	<b>LIMITED WARRANTY STATEMENT</b>	<b>32</b>
3.5 Warning Tone after Remote Disconnect	18	<b>Appendix FCC RF Exposure Information</b>	<b>35</b>
3.6 Emergency Call	18	<b>TATA Service Center List</b>	<b>36</b>
3.7 Power Off	18		

# Before You Start

## 1.1 Safety Instruction

### WARNING/CAUTION

To reduce the risk of fire or electric shock, do not expose this product to rain or moisture. Do not use this product near swimming pools or other water bodies.

### IMPORTANT

Before installing or operating this product read this information.

## 1.2 Optimal Phone Performance

- ▶ Do not operate your product when holding the antenna, or when someone is within four inches (ten centimeters) of the antenna. Holding the antenna affects call quality and may cause the telephone to operate at a higher power level than needed.
- ▶ For the best call quality, keep the antenna free from obstructions and position the antenna straight up.
- ▶ Do not use the phone with a damaged antenna. Have your antenna replaced by a qualified technician immediately. Use only the Authorized LGE Service Center-approved antenna. Non-

approved antennas, modifications, or attachments could impair call quality, damage the phone.

- ▶ RF energy may affect improperly installed or inadequately shielded personal medical devices such as pace makers, hospital monitor. Consult the manufacturer of any personal medical devices to determine if they are adequately shielded from external RF energy. Turn your terminal OFF in health care facilities when any regulations posted in the areas instruct you to do so.

Hospitals or health care facilities may be using equipment that could be sensitive to external RF energy.

- ▶ If this equipment does cause harmful interference to radio or television reception, which can be determined by turning the equipment off and on, the user is encouraged to try to correct the interference by one or more of the following measures:
  - Reorient or relocate the receiving antenna.
  - Increase the distance between the radio or television and the telephone.
  - Connect the equipment into an outlet on a circuit different from that to which the terminal is connected.
  - Consult your experienced radio/TV technician of

## Before You Start

the Authorized LGE Service Center

- ▶ Use only the battery, antenna and AC power supply provided by LGE.

Using any other type will invalidate the warranty.

- ▶ Only authorized personnel should service the phone and its accessories.

Faulty installation or service can be dangerous and may invalidate the warranty.

- ▶ Do not use the phone in designated "no cellular phone use" area.

Avoid exposure to high temperature or humidity.

- ▶ Avoid wetting the phone with any liquids. If the phone gets wet, turn the power off immediately and remove the backup battery and AC power supply.

If the phone is inoperable, then return to the service agent for service.

- ▶ Avoid shock or impact.
- ▶ We recommend you to charge the backup battery before initial use. Backup battery may be discharged during delivery.
- ▶ This phone complies with part 15 of the FCC Rules.

Operation is subject to the following two conditions:

- This phone may not cause harmful interference, and
- This phone must accept any interference received, including interference that may cause undesired operation.

### 1.3 Care and Service

- ▶ Unplug the telephone from the wall outlet and remove antenna (or disconnect antenna cable) before cleaning. Do not use liquid or aerosol cleaners.
- ▶ Use a damp cloth for cleaning.
- ▶ If the phone fails for any reason, do not attempt to disassemble; contact the Authorized LGE Service Center for assistance.
- ▶ If any of the following conditions exist: unplug the phone at the wall plug, remove battery, and call the service provider.

- The power supply cord is damaged or frayed.
- Liquid has been spilled into the phone.
- The phone has been exposed to rain or water.
- The phone has been dropped or damaged.
- The phone does not work normally by following the operating instructions.

### 1.4 Safety Information

#### WARNING

- ▶ Do not use harsh chemicals, cleaning solvents, or strong detergents to clean it. Wipe it with a soft cloth that has been slightly dampened in a mild soap-and water solution.
- ▶ Do not paint it. Paint can clog the device's moving parts and prevent proper operation.
- ▶ During lightning, do not touch power plug or phone line. It may cause an electric shock or death.

#### CAUTION

- ▶ Do not use with car battery. It may cause an electric shock, fire, breakdown or transformation.
- ▶ For safety use, use only adapter approved by LG.



## Before You Start

To all problems arising from not following this guide, LG does not bear responsibility.

- ▶ Avoid exposure to high temperature or humidity.

Avoid wetting the unit with any liquids. If the unit gets wet, turn the power off immediately and remove the backup battery and AC power supply.

- ▶ Keep it dry. Precipitation, humidity, and liquids contain minerals that may corrode electronic circuits.
- ▶ Do not use or store it in dusty, dirty areas as its moving parts can be damaged.

- ▶ Do not store it in hot areas. High temperatures can shorten the life of electronic devices, damage batteries, and warp or melt certain plastics.



## Before You Start



- ▶ Do not store it in cold areas. When the phone warms up to its normal operating temperature, moisture can form inside the phone, which could damage the phone's electronic circuit boards.



- ▶ Do not attempt to open it. Non-expert handling of the device could damage it. Consult your authorized LGE Service Center for help. It may be a cause of fire, electric shock and breakdown.



- ▶ Do not drop, knock or shake it. Rough handling can break internal circuit boards.



- ▶ Do not install under direct sunlight or on an uneven surface.

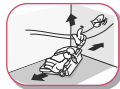
- ▶ Before using plug, check with available power voltage. Inaccurate power voltage may be a cause of fire.



- ▶ Do not plug many power cords in outlet. It may be a cause of fire or electric shock.



- ▶ Do not remodel the power cord or disassemble. If power cord or plug is impaired, do not use it. It may be a cause of fire or electric shock.



- ▶ Do not install in an ill-ventilated place. It may be a cause of fire or breakdown.



- ▶ Do not touch the plug with wet hands. When disconnecting the power cord of any accessory, grasp and pull the plug, not the cord. It may be a cause of fire or electric shock.



- ▶ Do not put heavy things on the power cord. Do not bend power cord too much. It may be a cause of fire or electric shock.



- ▶ Do not short-circuit. It may start a fire or may explode causing injury.



- ▶ Do not throw and impact battery. Do not dispose of batteries by putting them in fire. It may explode or catch fire by electrolyte.



- ▶ When you disconnect the power cord of any accessory, grasp and pull the plug, not the cord. It may cause an adapter breakdown.

## Before You Start

# Introduction

Congratulations on your purchase of the LG Fixed Wireless Terminal that has been designed to operate on the latest digital mobile communications technology,

Code Division Multiple Access (CDMA). This CDMA digital technology has greatly enhanced voice clarity and can provide various advanced features.

The terminal enables the normal operation and direct connection of standard telephone equipment into the cellular network.

The standard unit provides:

- ▶ A phone jack to plug in the telephone equipment(RJ-11 Port)
- ▶ Ring voltage used to ring the telephone connected to the unit, with a Ringer Equivalence Number of 4
- ▶ Data Port for repair(RJ-45 Port)
- ▶ AC Power supply with barrel plug connector
- ▶ Support Dial tone
- ▶ Touch tone(DTMF) or Pulse Dialing
- ▶ Support Caller ID Telephone(DTMF only, not Support FSK)
- ▶ Voice-Mail Notification ring alerts you to new

voice-mail messages

- ▶ Three lights (LEDs) to indicate the status of the unit

- ▶ Dipole Antenna

Some features can not be supported by service provider's equipment status.

For instance, the following features may not be supported:

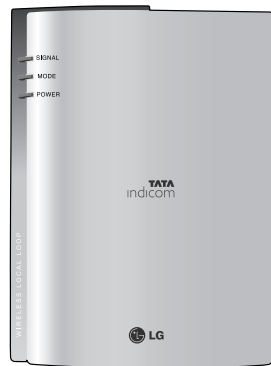
- ▶ Speed Dial
- ▶ Emergency Call
- ▶ Hot Line Call
- ▶ Alarm
- ▶ Outgoing Call Lock
- ▶ Quick Dial Option with “\*\*”

Other features as determined by your service provider.

### Note:

- Telephones with multiple terminating impedance should be set for 600ohms.

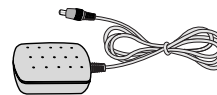
## 2.1 Component List



< Terminal >



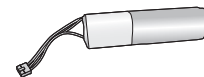
< Dipole Antenna >



< AC/DC Power Adapter >



< User Guide >



< Backup Battery(Built-in) >

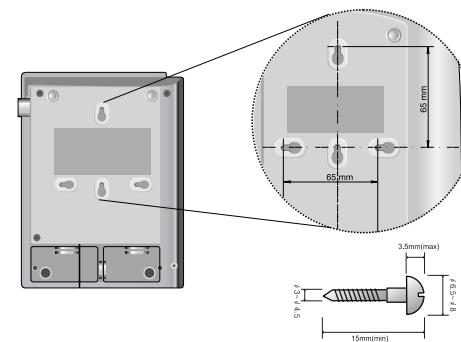
# Introduction

## 2.2 Front, Side and Rear View of the Terminal



&lt; Figure 1 &gt;

ITEM	DESCRIPTION
(1) LEDs	Indicate the status of the unit
(2) DC IN 12V	AC/DC Power Adapter
(3) Battery Switch	Battery On/Off Switch
(4) TEL (RJ-11 Port)	Connecting Ports for SLT (Single Line Telephone)
(5) DATA Port (RJ-45 Port)	Connecting Port for Repair (RS-232C)
(6) Antenna Connector	Connecting Port for TNC Antenna
(7) Power	Power On/Off Key



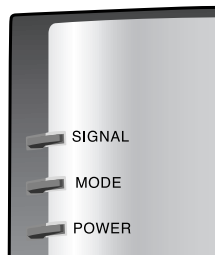
&lt; Mounting Template &gt;

Installation for Wall Mounting

- To mount terminal on the wall, please follow the procedure to install it correctly.
1. Determine suitable location to mount terminal with mounting template.
  2. Mark the two openings and select round or pan-head type screw.
  3. Drill out the holes with drill bit smaller in diameter than the screws.

4. Secure two screws into the wall, leaving about 65mm gap between the screw heads.
5. Insert the DC power jack into an electrical outlet and attach the telephone line into the Phone Jack (RJ-11) of the terminal.
6. Place the terminal over the two screws.
7. Slide the terminal downward until the screw head is locked at the top of the opening and the terminal is secure.
8. Check that set is fixed on the screws.

## 2.3 3 LEDs Indicators



LED	COLOR	Operating Condition
SIGNAL LED	GREEN-solid	Good Signal
	ORANGE-solid	Poor Signal
	RED-solid	No Service Area
MODE LED	GREEN - blink (0.5sec On / 0.5sec Off)	Voice Message is received
POWER LED	GREEN-solid	DC Power is applied
	RED-solid	Battery Power is applied
	ORANGE-solid	Low Battery

< Table 1 >

## 2.4 Installation

You should follow each step carefully as shown below in order to guarantee proper operation of CDMA Fixed Wireless Telephone.

### STEP I. Check Components

- ▶ Fixed Wireless Terminal is supplied with the following standard unit and accessories:
 

1. LST-270T Unit	-1 EA-
2. Dipole Antenna	-1 EA-
3. Backup Battery	-1 EA-
4. User Guide	-1 EA-
5. AC/DC Power Adapter	-1 EA-
- ▶ Please make sure that these components are present and check for evidence of shipping before you begin the unit installation.
- ▶ If components are missing or damage is found, contact your authorized LGE Service Center immediately.

### STEP II. Place the Terminal

- ▶ Place the terminal on the stable flat secure surface area (desk, table, etc.).  
Avoid direct exposure to the sunlight and damp areas.
- ▶ Read the SAFETY INFORMATION located at the first part of this document before you place the terminal.

### STEP III. Connect Components

- ▶ Connect the Dipole antenna to the TNC connector located at the top side of the terminal. (See Figure 1 to locate the TNC connector.)  
If you have placed the terminal on the flat surface, position the antenna up side.
- ▶ Connect your phone cord to the RJ-11 port located at the side of the terminal.
- ▶ Connect the battery cable to the DC battery connector at the side of the terminal.  
- Remove the battery compartment cover.

# Introduction

- Connect battery to the connector.
- Replace the battery cover.
- ▶ Connect the AC power supply cable to the DC input port located at the side of the terminal.

**“Refer to connection Diagram with external equipment in Figure 2”**

## STEP IV. Check LED Indicators

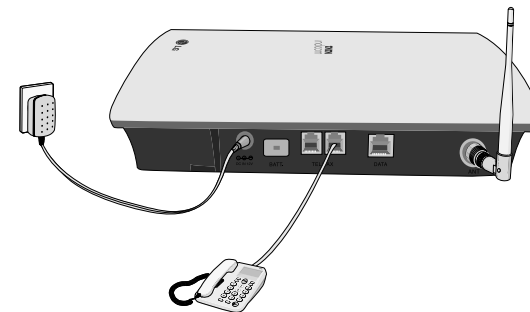
- ▶ When you followed the installation instruction STEP I to STEP III, please check the LEDs for normal operation.
- ▶ When DC power is fed at the first time, LEDs will operate as follows:

After few seconds, Power LED is GREEN, if AC/DC power is applied.

If receiving signal strength is strong enough, then SIGNAL LED is GREEN.

If not, it is ORANGE or RED. And MODE LED is turned off.

# Introduction

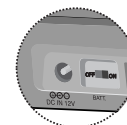


**LST-270T**

< Figure2. Connection Diagram with External Equipment >

**Note:**

- Length between LST-270T and Telephone : over 1 m.
- . The adapter type(with power cord) may be different from country to country.**
- ! Connection telephone jack to data port will cause malfunction of data service



Battery Switch

**Notice**

*Before using the terminal, please check battery switch is on.  
After switching on it, use the phone. When charging the battery, check that battery switch is “on”.*

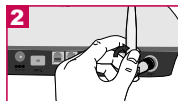


## 2.5 Installation Steps

Please follow the below procedure to install the unit properly.



1 Connect the antenna to the TNC connector  
Turn right).



2 Bend the antenna up right.

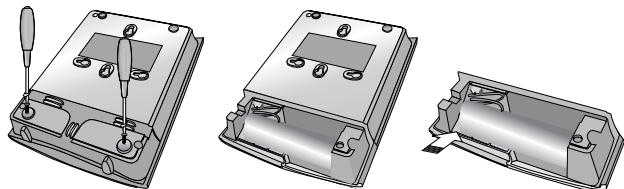


3 Connect your phone Cord.



4 Connect the DC Power supply.

<Terminal Connection >



<Battery Connection >

- ▶ First, slow down the terminal slide switch and unscrew.
- ▶ To connect battery, disassemble terminal like above figure.
- ▶ Battery connector's groove must be slid into the jack like above figure.

## 3.1 Power On

1. The POWER LED indicates the present status:

- (1) Using AC Adapter : Solid GREEN
- (2) Using internal battery : Solid RED
- (3) Using internal battery and battery is weak capacity: Solid ORANGE

2. When the terminal succeeded in getting the service, SIGNAL LED indicates the strength of the signal(Table 1).

**Lifting handset on telephone, dial tone is heard and you can enter a phone number.**

**Note:**

- Not entering any key for 15 seconds warning tone will be produced.
- In the overlap dial mode, it may take over 15seconds.
- If Hot Line function is enabled, busy tone is not produced and hot line number is automatically connected.
- While having maintenance request order or lock

order from the system, neither dial tone nor busy tone is produced. Instead of them, the lock tone("opi-pi-pi") will be heard one time and there will be no sound and All LED's will be blinking with GREEN color simultaneously.

3. If the radio service is not available or radio signal is too weak to detect:

The SIGNAL LED is RED. (No Service status)

## 3.2 Placing a Call

When lifting handset of the connected telephone ("off hook"), the terminal determines whether cellular service is available.

If it is available, dial tone is produced and a number can be dialed normally.

If phone service is not available, SIGNAL LED of the terminal will be RED and no dial tone will be heard.

If user presses "\*" button after dialed the number, the terminal makes a call immediately.

# Basic Operations

## 3.3 Receiving a Call

The connected telephone rings when an incoming call is detected.

Pick up the handset and begin talking.

## 3.4 Ending a Call

When you have completed the call, place the handset back on telephone. Also you can hook flash more than about 1 second to end a call and place a new call without hanging up the handset.

## 3.5 Warning Tone after Remote Disconnect

A warning tone may be heard in the telephone after a remote party hangs up from a call, allowing another call to be initiated after hook-flash.

## 3.6 Emergency Call

When emergency call number is connected once, it will

not be terminated unless the called party disconnects the call (Emergency Call Hold Service).

Therefore even caller hangs up the telephone, the line will be still connected, so if the caller picks up the telephone again, he can continue talking.

If emergency call is connected, cellular service is not supported.

As long as your telephone is registered on a system, you can place a call to emergency number even if your telephone is locked or restricted.

Please check the available emergency call number with your service provider.

## 3.7 Power Off

When you don't need to use terminal anymore, you should do power off before removing AC/DC adapter cable.

If you do terminal power off, Press Power key for 3 seconds. If so, the terminal will LED off and stop all operations. Then you shall separate External Power jack from Terminal.

## 4.1 Hook Flash

When the terminal receives a hook-flash from the connected telephone device, it will automatically allow:

1. For producing dial tone again after a phone number has been dialed without connection.
2. The use of special cellular services which may be available in your cellular service area.

### Note:

- Hook-flash is accomplished in a call through either pressing the dedicated hook-flash key which is available on some phones or through a rapid single press of the hang-up mechanism upon which the handset rests when the phone is hung up.

## 4.2 ROH (Receiver Off Hook)

If the telephone equipment remains "off-hook", meaning that the handset is left off of its cradle as it would be when you hang up, with no dialing activity for about 60 seconds, a ROH tone emits from the

# System Features

receiver for a period of 60 seconds. This feature may be different or not by country specification.

## 4.3 System Features

Many cellular systems offer special services such as call waiting, call forwarding, etc. You can purchase these services from your cellular service provider. There are certain dialing sequences to be earned, which vary from service provider to service provider. The service provider will provide the dialing instructions for your system.

**Call Forwarding** - An incoming call can be delivered to another telephone number programmed. Please contact your cellular service provider to use this feature.

**Call Waiting** - You can receive another incoming call during a call.

In this case, you will hear beep tone and then you can connect the second call holding the first call by entering a code required by cellular service provider. Your cellular service provider may require hook-flash (a quick, simulated "hang up") to answer the waiting

call. Other providers may require entering the codes involving digits 1-9, \*, and # to answer a waiting call.

**Three-way Conference Calls** - For three-way conference calls, a hook-flash transmits the SEND command.

Please contact your cellular service provider for more information on using this service.

### Example

- (1) Dial the first number and wait until connected:
- (2) When connected, give hook-flash and dial the second number and give one more hook-flash to be connected:
- (3) When the second call is connected, give hook flash to complete a 3-way conference call.

**Voice mail** - Use voice mail service in the same manner as you would on a regular telephone. If you have a new voice-mail message, the WLL-terminal transmits a special(4sec On / 1 sec Off default) and Mode LED is blinking (0.5sec On / 0.5sec Off). Please contact your cellular service provider for more information on using Voice Mail.

**Caller ID** - LST-270T can support caller ID service if you have a telephone with Caller ID feature.

\*During a call, CID is not displayed.

Please contact your cellular service provider for more information on using this service.

\*Only DTMF Caller ID is Supported, FSK Caller ID is not Supported.

## 4.4 Applications

**Multi-extension Installations** - For a multi-extension installation, make sure that all the extensions are on-hook.

If one extension is off-hook (not hung up), none of the extensions on that line will ring when a call is being received.

LST-270T provides various convenience and various features to user. This chapter describes how to program these features and to use them. The followings are main features can be used:

- Speed Dial
- Emergency Call
- Hot Line Call
- Wake-up Alarm
- Conversation Voice Level
- Outgoing Call Lock
- Restrict Call

### ► Programming Instruction

1. Lift Handset and press “#” key twice and you will hear the Menu Entering tone.
2. Enter the field number (1~ 8).
3. Press “#” key and you will hear confirmation tone.
4. Enter sub-fields and their options.
5. Press “\*” key to save and you will hear confirmation tone.

### Note:

- As to the characteristic quality of some telephones, confirm tone or error tone could not be heard.

## 5.1 Speed Dial

LST-270T has 30 memory locations (1~30:1 or 2 digits) to store frequently used phone numbers and you can make a call by pressing memory location number only when the speed dial feature is enabled.

### Storing the Speed Dial Number

1. Press “#” + “#” + “1” continuously to enter Speed Dial programming mode.
2. Press “#” and one of memory numbers (1~30).
3. Press “#” and the phone number (Max. 32 digits).
4. Press “\*” to store.

## Enable or Disable Speed Dial

1. Press “#”+ “#”+ “1” continuously to enter Speed Dial programming mode.
2. Press “#” and “1” or “2” to Enable or Disable respectively.  
“1” - Speed Dial Enable  
“2” - Speed Dial Disable
3. Press “\*” to store.

## Erase All Speed Dials

1. Press “#” + “#” + “1” continuously to enter Speed Dial programming mode.
2. Press “#” and “3” to erase all Speed Dials.
3. Press “\*” to store.

**Note1:** Speed Dial feature is disabled after erase operation executed

## Operation

1. Make a Speed Dial function enable.

2. Lift handset and dial tone will be heard.
3. Press Speed Dial number and wait for dial timeout.  
If user press “\*” button after dialed the number, the terminal make a call immediately.

## 5.2 Emergency Call

LST-270T has 3 emergency call numbers (1~3) and max. 32 digits can be stored in each emergency call number.

### Entering the Emergency Phone Number

1. Press “#”+ “#”+ “2” continuously to enter Emergency Call programming mode.
2. Press “#” and one of the emergency memory location numbers (1~3).
3. Press “#” and the phone number (Max. 32 digits).
4. Press “\*” to save and enable this function.

## Enable or Disable Emergency Call

1. Press “#”+ “#”+ “2” continuously to enter Emergency Call programming mode.
2. Press “#” and Enable code (“1”) or Disable code (“2”).
3. Press “\*” to save.

## Erase All Emergency Call Numbers

1. Press “#”+ “#”+ “2” continuously to enter Emergency Call programming mode.
2. Press “#” and “3” to erase all Emergency Call Numbers.
3. Press “\*” to store.

**Note1:** Emergency Call feature is disabled after erase operation executed

### Note:

- If Emergency Call is disabled and Emergency Call number has been already programmed, you can make enable Emergency Call by pressing “#”+ “#”+ “2”+ “#”+ “1”+ “\*” without entering a Emergency Call Number again.

## 5.3 Hot Line

While the Hot line function is enabled, the programmed number will be automatically dialed when you pick up the handset and wait for the programmed hot line time (2~10sec) without any key press.

### Programming the Hot Line Number

1. Press “#”+ “#”+ “3” continuously to enter Hot Line programming mode.
2. Press “#” and Hot Line Enable code “1”.
3. Press “#” and Hot Line phone number (Max. 32 digits).
4. Press “\*” to save and enable this function.

### Enable the Hot Line Feature

1. Press “#”+ “#”+ “3” continuously to enter Hot Line programming mode.
2. Press “#” and Hot Line Enable code “1”.
3. Press “\*” to save.

## Disable the Hot Line Feature

1. Press “#”+“#”+“3” continuously to enter Hot Line programming mode.
2. Press “#” and Hot Line Disable code “2”.
3. Press “\*” to save.

## Programming the Hot Line Time

1. Press “#”+“#”+“3” continuously to enter Hot Line programming mode.
2. Press “#” and Hot Line Time code “3”.
3. Press “#” and enter desired Hot Line Time (2~10 seconds).
4. Press “\*” to save.

### Note :

- If Hot Line is disabled and Hot Line number has been already programmed, you can make enable Hot Line feature by pressing “#”+“#”+“3”+“#”+“1”+“\*” without entering a Hot Line Number again.

## 5.4 Alarm

If alarm feature is enabled, you will hear ring at the programmed alarm time every day for 1 minute.

Alarm does not ring on the state of hook off, conversation or no service.

### Entering alarm time (12-hour Mode)

1. Press “#”+“#”+“4” continuously to enter Alarm Time programming mode.
2. Press “#” and Alarm Time code “1” for 12-hour mode.
3. Press “#” and Alarm Time (HHMM+am(“1”) / pm(“2”).
4. In the forenoon, time range is 0000~1159.
5. In the afternoon, time range is 1200~1259 and 0100~1159.
6. Press “\*” to save and enable Alarm Time.

### Entering alarm time (24-hour Mode)

1. Press “#”+“#”+“4” continuously to enter Alarm Time programming mode.
2. Press “#” and Alarm Time code “2” for 24-hour mode.
3. Press “#” and Alarm Time (HHMM). (0000~2359)
4. Press “\*” to save and enable Alarm Time.

### Disable alarm feature

1. Press “#”+“#”+“4” continuously to enter Alarm Time programming mode.
2. Press “#” and Alarm Disable code “2”.
3. Press “\*” to save.

### Note :

- If Alarm is disabled and time has been already programmed, you can make enable Alarm feature by pressing “#”+“#”+“4”+“#”+“1”+“\*” without entering Alarm Time again.

## 5.5 Volume Level

There are three voice volume levels to be controlled by software, and you can set the level to the adequate conversation volume.

### Changing the Volume Level

1. Press “#”+“#”+“5” continuously to enter Volume Level programming mode.
2. Press “#” and Volume Level (1~3).  
“1” - LOW Level  
“2” - MIDDLE Level  
“3” - HIGH Level
3. Press “\*” to save.

Before pressing “\*” you can enter Volume Level continuously.

## 5.6 Outgoing Call Lock

If you try to make an outgoing call while outgoing call lock is enabled, then you will hear warning tone after dial time-out as an indication of entering the LOCK code. You should enter LOCK code to make an outgoing call. LOCK code is composed of 4 digits. Outgoing Call Lock feature is disabled as a factory setting.

### Enable or Disable Outgoing Call Lock

1. Press “#” + “#” + “6” + continuously to enter Outgoing Call Lock programming mode.
2. Press “#” and “LOCK code (4 digits)”.
3. Press “#” and Enable (“1”) or Disable (“2”) code.
4. Press “\*” to save.

### Changing Outgoing LOCK Code

1. Press “#” + “#” + “6” + continuously to enter Outgoing Call Lock programming mode
2. Press “#” and “LOCK code (4 digits)”

3. Press “#” and “3” to change LOCK code.
4. Press “#” and “new LOCK code (4 digits)”.
5. Press “#” and re-enter “new LOCK code (4 digits)”.
6. Press “\*” to save.

#### Note :

- If Emergency Call has been enabled, then Emergency Call Numbers stored can be made even when Outgoing Call Lock has been activated on the terminal.

## 5.7 Restrict Call Mode Setting

While the Restrict Call function is enabled, the specified numbers cannot be called. These specified numbers start with specific digits. The specific digits are set according to the following procedure (Storing the Deny dial number).

Among these specified numbers you can permit some numbers by designating start digits by following procedure (Storing the Permit dial number).

LST-270T has 10 Deny dial numbers (1~10), and max. 32 digits can be stored in each Deny dial number.

LST-270T has 10 Permit dial numbers (1~10), and max. 32 digits can be stored in each Permit dial number.

If you set Emergency Call, the emergency number is not applied to this restrict call.

### Set Restrict Call Level

1. Press “#” + “#” + “8” + continuously to enter Restrict Call programming mode.
2. Press “#” and “LOCK code”  
(4 digits : set in Outgoing call lock / default is 0000).
3. Press “#” and restrict level (1~4).

“1” - No restriction

“2” - Restriction

“3” - Emergency only (All excepting emergency are restricted.)

“4” - Clear restrict table

4. Press “\*” to save.

### Storing the Permit Dial Number

1. Press “#” + “#” + “8” + continuously to enter Restrict Call programming mode.
2. Press “#” and “LOCK code”.  
(4 digits : set in Outgoing call lock / default is 0000).
3. Press “#” and “1” to enter Permit Dial Number store step.
4. Press “#” and one of “Memory number” for permit dial number(1~10).
5. Press “#” and the “digits” (Max. 32 digits).
6. If you want to store more Permit Dial Numbers continue from step 3.  
If you want to finish at this point, Press “\*” to save.

## Storing the Deny Dial Number (Restricted dial number)

1. Press “#” + “#” + “8” + continuously to enter Restrict Call programming mode.
2. Press “#” and “LOCK code”.  
(4 digits : set in Outgoing Call Lock / default is 0000).
3. Press “#” and “2” to enter Deny Dial Number store step.
4. Press “#” and one of “Memory number” for Deny Dial Number(1~10).
5. Press “#” and the “digits” (Max. 32digits).
6. If you want to store more Permit Dial Numbers continue from step3.  
If you want to finish at this point, Press “\*” to save.

## 6. Troubleshooting

In the event you are unable to place or receive telephone calls, first check the appropriate power indication on the LED. In case of no power, check the wiring connections between the power outlet and the terminal. Check for the appropriate service indication on the LED. If an adequate signal is not present, try different locations for the better signal reception.

This will verify the condition of the telephone equipment and the internal wiring of the telephone service to verify that it is working properly. If the telephone system of wiring is not working properly, replace or repair the equipment as required. The unit will not function with equipment that requires data transmission.

Contact your service provider if either of the following condition is true:

- ▶ The terminal does not work and the LED indicates “No Service” and if changing the locations does not resolve the problem.
- ▶ The terminal does not work and the LED indicates “In Service”.
- ▶ Power Supply - If the unit does not respond once

- plugged into a power supply:
- Check that the AC power source.
  - Check that the Barrel Plug of the Power Supply is properly inserted into the terminal.
  - Check that the terminal Power Supply is properly plugged into the electrical outlet or power source.

### Warning!

1. Only Authorized Service Personnel should remove the cover of the fixed wireless terminal for additional service. The contents of the terminal contain components that present an Electric Shock Hazard if handled improperly.
2. According to the power condition, you can hear a little noise during connection.

For further assistance, contact your authorized LGE Service Center for service and assistance. Please keep your Model number and Serial number ready for quicker service.

## 7. General Information

### ▶ Main Unit

Item	Description
Tx Frequency	824 ~ 849 MHz
Rx Frequency	869 ~ 894 MHz
Channel Bandwidth	1.25 MHz
Frequency Stability	±300 Hz
Tx Power	Max. 0.25W
Rx Power Level	-104 ~ -25 dBm
Size	195 x 151 x 43 mm
Weight(g)	393g(w/o battery) / 556g(w/battery)
Operating Temperature	-10 ~ 50°C

### ▶ AC/DC Adapter

Item	Description
Input Voltage	100V ~ 240V AC
Input Frequency	50 / 60 Hz
Output Voltage	12V(DC)

### ▶ Internal Back-up Battery(A)

Item	Description
Capacity	7.2V NiMH
Talk duration time	4 Hours
Standby duration time	35 Hours
Charging duration time	Normal/Trickle, 8 Hours

**Note :** Talk time condition: sector power -80dBm ~ -85dBm full data rate  
Standby time condition: sector power -80 dBm ~ -85dBm slot cycle index 2



## Limited warranty statement

LG ELECTRONICS Inc. represents and warrants that this subscriber unit and its accessories ("PRODUCT") is free from defects in material and workmanship.

This warranty is subject to the following terms and conditions;

1. This warranty of the PRODUCT extends for a period of 12 months commencing from the date of the activation or 16 months from the date of manufacture whichever is less, except for the battery, for which the warranty is 9 months from the date of activation or 12 months from the date of manufacture whichever is less.
2. During the warranty period, LG ELECTRONICS Inc. or its authorized service network will repair or replace, at LG ELECTRONICS Inc.'s option, the PRODUCT or any relevant parts thereof in the event that the PRODUCT is found to be defective. The repaired PRODUCT or the Product/part provided as a replacement for a defective PRODUCT/part, shall be free from defects. The END USER/consumer purchaser of the PRODUCT or his/her assignee ("CONSUMER") shall not be charged (whether

for parts, labour or otherwise) for the repair or replacement of a defective PRODUCT during the warranty period. All replaced parts, boards or equipment shall become the property of LG ELECTRONICS Inc.

3. warranty in respect of a repaired or replaced PRODUCT/part shall extend for the remaining warranty period of the repaired PRODUCT or replacement thereof to the CONSUMER.
4. Upon request from LG ELECTRONICS Inc., the CONSUMER may be required to provide the purchase receipt or other documentation or information in respect of the date and place of purchase.
5. The CONSUMER shall have no coverage or benefits under this warranty in the event that any of the following conditions are applicable:
  - (a) The PRODUCT has been subject to abnormal use or conditions, improper storage, exposure to excessive moisture or dampness, exposure to excessive temperatures,

unauthorized modifications, unauthorized repair (including but not limited to use of unauthorized spare parts in repairs), abuse, accident, Acts of God, spills of food or liquids, improper installation and breakage or damage to antennae (otherwise than by reason of any defects in material or workmanship).

(b) LG ELECTRONICS Inc. has not been notified by the CONSUMER of the defects of the PRODUCT during the applicable warranty period.

(c) The PRODUCT serial number code or the accessory date code has been removed, defaced or altered.

(d) The PRODUCT has been used with or connected to an accessory (i) not supplied by LG ELECTRONICS Inc. or its affiliates, (ii) not fit for use with the PRODUCT or (iii) used otherwise than in the manner intended.

(e) The seals of the PRODUCT's battery enclosure have been broken or show evidence of tampering or the PRODUCT'S battery has been used in equipment other than that for which it

has been specified usable by LG ELECTRONICS Inc.

(f) All plastic surfaces and all other externally exposed parts that are scratched or damages due to normal customer use.

(g) Breakage or damage to antenna unless caused by defects in material or workmanship.

6. Order to derive benefits of this warranty in respect of any defects in the PRODUCT, the CONSUMER shall ship the PRODUCTS or part thereof at its cost to the authorized service center of LG ELECTRONICS Inc. LG ELECTRONICS Inc. shall bear the cost of shipping the PRODUCT or part thereof back to the CONSUMER after the completion of the service under this limited warranty.

NO OTHER EXPRESS WARRANTY IS APPLICABLE TO THIS PRODUCT. THE DURATION OF ANY IMPLIED WARRANTIES, INCLUDING THE IMPLIED WARRANTY OF MARKETABILITY OR MERCHANTABILITY OR FITNESS FOR A PARTICULAR PURPOSE OR

## Limited warranty statement

USE IS LIMITED TO THE DURATION OF THE EXPRESS WARRANTY HEREIN. LG ELECTRONICS Inc. SHALL NOT BE LIABLE FOR THE LOSS OF USE OF THE PRODUCT, INCONVENIENCE, LOSS OR ANY OTHER CONSEQUENTIAL DAMAGE, ARISING OUT OF THE USE OF, OR INABILITY OF USE, OF THIS PRODUCT OR FOR BREACH OF ANY EXPRESS OR IMPLIED WARRANTY, INCLUDING THE IMPLIED WARRANTY OF MARKETABILITY OR MERCHANTABILITY OR FITNESS APPLICABLE TO THIS PRODUCT.

THE CONSUMER UNDERSTANDS THAT LG ELECTRONICS INC.

HAS EMBEDDED RELIANCE SOFTWARE AND ITS NETWORK PARAMETERS IN THE PRODUCT. IN CASE THE CONSUMER DELETES, REMOVES, ALTERS OR MODIFIES SUCH SOFTWARE AND THE PARAMETERS AND/OR INSTALLS ANY THIRD PARTY SOFTWARE, THE WARRANTY AND REMEDIES HEREUNDER SHALL NOT BE AVAILABLE TO THE CONSUMER.

7. It is hereby expressly clarified that all warranties (express or implied) in respect of the PRODUCT are provided by LG ELECTRONICS Inc. alone.

## Appendix FCC RF Exposure Information

### Appendix FCC RF Exposure Information

#### WARNING!

The antenna used for this transmitter must not exceed 2.5dBi and must be installed to provide a minimum separation distance of 20 cm from all persons.

#### CAUTION

Use only the supplied and approved antenna. Use of unauthorized antennas or modifications could impair call quality, damage the phone, void your warranty and/or result in violation of FCC regulations.

Do not use the phone with a damaged antenna. If a damaged antenna comes into contact with skin, a minor burn may result. Contact your local dealer for a replacement of antenna.

#### FCC Part 15 Class B Compliance

This device and its accessories comply with part 15 of FCC rules.

Operation is subject to the following two conditions:

(1) This device and its accessories may not

cause harmful interference, and (2) this device and its accessories must accept any interference received, including interference that may cause undesired operation.

# TATA Service Center List

## Authorized LGE Service Center List

Sr	Circle	City Name	ASCs	Address Person	Contact	Phone
1	Andhra Pradesh	Guntur	Vasavi Associates	Door no 6-20-4, Swarnalok complex, 4/1 Arandal Pet, Guntur-522003	Mr. Satyam	0863-2233678, 9848105789, 09394155554
2	Andhra Pradesh	Hydrabad	Sri Varun Electronics	D.No 5-8-344/1, " DHAN BHAGYA ESTATE", Chirag Ali Lane, Abids, Next to Raghava Ratna Towers, Hyderabad- 500 001	Mr. Raghavendra	040-55781999, 040-55253888, 040-56878822, 09391001463
3	Andhra Pradesh	Hydrabad	JVR Infotech Pvt Ltd	Shop No 8, Vanijya Vihar, Nalanda Building, Dilsukh Nagar Main Road, Hydrabad-500060	EV Ramakanth	040-24161848, 040-55109604, 040-56524157, 09391131067, 040-36060606
4	Andhra Pradesh	Hydrabad	S V Electronics	Shop No. 41, Nilagiri Block, Aditya Enclave, Ameerpet Main Road, Hydrabad-500038	Mr. Vanktेशwara Rao	040-55754477, 55343030
5	Andhra Pradesh	Hydrabad	Reliable Communication	G-8, 3-6-561, AALTO'S A & M Trade Centre, HIMAYATNAGAR, HYDERABAD - 500029	Mr. Mahesh Heda	04030913251, 09346320705, 09849251173
6	Andhra Pradesh	Hydrabad	Shweta Communciations	Shop No.9, Ground Floor, Pavani Ansuya Complex, Opp. Huda Complex, Tarnaka, Hyderabad	Mr. Sandeep Heda	040-55918841, 040-55918842, 09346698606
7	Andhra Pradesh	Kurnool	R K LG CDMA	#40-37-J1, Opp. Indian Bank, Near Balaji Hotel, Kurnool- 51 8002.	Mr.Paraveen Krishna	08518-220201, 09393810688
8	Andhra Pradesh	Nellore	Siri Enterprises	Opp. Archana Theater, A C Centre, Nellore PIN-524001	Mr. Paraveen	09398309571, 09347000000
9	Andhra Pradesh	Rajamund-hary	Siri Infotech	Police Welfare Complex, City Hospitals Junction, Danvai Pet Main Road, Rajhamundry-533103	Mr. Raghvendra	0883-2421567, 09397925799
10	Andhra Pradesh	Secundr-abad	Shweta Computers	# 1-7-69/1 & 2, OPP Aditya Delux Hotel, Near Paradise circle Sarojini Devi Road, Secunderabad - 500003	Mr. Jagdish	040-55334180, 040-27721076,

# TATA Service Center List

Sr	Circle	City Name	ASCs	Address Person	Contact	Phone
						09396532358, 09391041673
11	Andhra Pradesh	Tirupathi	CMT Computer Services	18-1-624 VV Mahal Road, OPP HDFC BANK, Tirupathi, PIN-517501	Mr. K Vasu Naidu	0877-5561979, 09393620209
12	Andhra Pradesh	Vijaywada	K L Computer House	39-9-46 SVS Temple Street, Labbipet, Vijaywada PIN- 520 010	Mr. Kartik	0866-5520461, 5671461, 09392105222
13	Andhra Pradesh	Visakhapa-tnam	GVS Enterprises	G5, Ground Floor, Backside of Sangam-Sarat Theatre, 1st Lane, Dwarka Nagar, Visakhapatnam - 530 016.	Mr. Satish Kumar	0891-2598610, 9394206074
14	Andhra Pradesh	Warrangal	S S Marketers	6-1-73/1, Sai Bhavan, Sridevi Theatre Road, Hanamkonda, Warrangal-506001	Mr. L.Srinivas Rao	0870-2552223, 09390100708
15	Andhra	Kakinada	Delta Infotech	Pradesh Door No. 6-1-29, Opp. Swami Vivekananda Park, Jawahar Street, Surya Rao Pet, Kakinada - 533001	Mr. Shivanand	0884-5593533 9346846009
16	Bihar	Patna Company	Infotek Trading	1st floor, City Palace, New Dak Bungalow Road, Patna-800001	Sanjay Chowbey	0612-2227166
17	Bihar	Patna	Competent Mobile Service	Shop 1, Hotel Lalitha Complex, East Bowring Canal Road, Patna	Mohit Ahluwalia	9334022706
18	Delhi	Delhi	Comhard Systems	D-30, 31, First floor, Near Hotel Shipra, Main Vikas Marg, Lakshmi Nagar	Mr. Ravi Kant Gupta	011-30955887, 9818867678
19	Delhi	Delhi	Innovative Telecom	305, Aggarwal Millenium Tower, Netaji Subash Place, Pitam Pura, Delhi-110088	Mr. Manoj Garg	011-55154343, 9811682453, 011-30925753
20	Delhi	Delhi	Sagar Technologies	W-8, First Floor, Main Patel Road, West Patel Nagar, New Delhi - 110008	Mr. Deepak / Mr. Amit	9810320170, 011-55433100
21	Delhi	Delhi	Sagar Technologies	J-39, Central Mkt, Lajpat Nagar-II, New Delhi-110024	Mr. Prabhat	011-55425644, 011-55425645
22	Delhi	Delhi	Ucom Technologies Pvt Ltd.	45, 1st Flr, Corner Mrkt, Malviya Nagar, New Delhi - 110017	Bhuvan Chandra	011-26675900, 55655382, 09313088818
23	Delhi	Delhi	Nice Telecommunica-tion	15/23, First Floor, DDA Complex, Nangal raya, D Block, Janakpuri, Delhi - 110046	Anurag	011-28521044, 9810778310

## TATA Service Center List

Sr	Circle	City Name	ASCs	Address Person	Contact	Phone
24	Delhi	Delhi Telecom	Touch Tone	B-52, First Floor, Kalkaji, New Delhi	Ashish Dey	011-30939031
25	Delhi	Delhi	Cube Engineers and Consultants Pvt Ltd	A-65, Naraina Industrial Area, Phase-1, New Delhi	Atul Gupta	09312224103, 011-55450272, 51411623
26	Delhi	Delhi	Comhard Systems	B-120, Hardev Puri, 100 Feet Main Road, Near MTNL Office, Nathu Colony Chowk, Shahdra, New Delhi - 110 093.	Mr. Ravi Kant Gupta	011-39572430, 011-39572427
27	Delhi	Delhi	R K Communications	2516 Hudson Lines, Kingsway Camp-Nr. Kamla Nagar, New Delhi	Mr. Pradeep Aggarwal	011-39508861
28	Delhi	Delhi	Arham Infotech Services	1/1, Regal Building, Near Malik Sweets, Connaught Place, New Delhi - 110 001.	Mr. Anil Surana	9350286361 9350286361
29	Gujarat	Ahmedabad	Visual Enterprises	104, Saarthak Complex, behind Urja House, Swastik Char Rasta, Navrangpura, Ahmedabad-380009	Vallabh Patel	079-26463305, 09376171851
30	Gujarat	Ahmedabad	Silicon Valley	F/6, Silver lake, Jagabhai Park, Rambaug Road, Maninagar, Ahmedabad-380008	Rajesh Patel	079-5430634, 9824025430
31	Gujarat	Ahmedabad	Mishree Communication	75, Management Enclave, Opp. Indraprastha Bungalows, Vastrapur, Ahmedabad.	Mitesh Patel	9327037582, 079-55314224, 9327800611
32	Gujarat	Ahmedabad	A Com Technologies	Shop No-40, 1st Floor, Shubh Complex, Near Rajasthan Hospital, Camp Road, Shahibaug, Ahmedabad-380004	Vijay.S.Gohel	9824544230, 079-30940560
33	Gujarat	Bhavnagar	Teletext Gold	G/8, Radheshyam Complex, Radha Mandir, Vaghavadi Road, Bhavnagar-364001	Nilesh Bagadia	0278-2415545, 9824497766
34	Gujarat	Gandhinagar	Creative Communications	Shop No 102, Suman City, Sector 11, Gandhinagar-382011	K.J. Barot	079-23226241, 9825059590
35	Gujarat	Jamnagar	Sudarshan Infosys	3, Prerna Building, Cricket Bunglow-3, Indira Nagar, Jamnagar	Amit Unadkat	0288-2552696, 9824478203
36	Gujarat	Rajkot	Roopang infocare	Vinod Nivas, 4, Sardarnagar(West), Nr Astron Cinema, Rajkot-360001	Kalpesh Rugani	0281-2464485, 09374103622, 9824068880
37	Gujarat	Surat	Excel Solutions	G-48, Ascon Plaza, Anand Mahal Road, Adajan Surat-395009	Nitesh Jain	0261-5544500, 09327344500, 9825399870

## TATA Service Center List

Sr	Circle	City Name	ASCs	Address Person	Contact	Phone
38	Gujarat	Surat	Omsai Services	37, Golden Point, Near Science Laboratory, Ring Road, Surat -3940003	Dharmesh Patel	0261-5593716, 9374710610, 9825406129
39	Gujarat	Vadodra	Aashnik Infotech	F 50, National Plaza, R.C. Dutt Road, Alkapuri, Vadodara-390005	Aashish Parmar	0265-3112123, 3090969, 9327230793
40	Gujarat	Vapi	Klassik Statino Products	116, Bhanudarshan Co-Op Society, Koparli Road, Near Gunjan Cinema, GIDC, Vapi	Avishek Suhasaria	0260-3092363, 9377000911
41	Haryana	Ambala	Bee Ess Aar Communication	92-93, Gandhi market, Ambala Cantt-133001	Rajiv Gupta	0171-2641234, 9416021234
42	Haryana	Faridabad	Hi-Tech Communication	105, Sector 10, Faridabad-121006	Rahul Jindal	0129-2223422, 9810456663
43	Haryana	Gurgaon	Signature Communications	B-100 A, South City -1, Opposite - Huda Gymkhana Club - Gurgaon 122001	Raj Kumar Garg	0124-3956565, 0124-5102709
44	Haryana	Karnal	Mass Communication	7, Dayal Singh Colony, Kunj Pura Road, Karnal-132001	Ms Pinki	0184-3090717, 09896354205
45	Haryana	Panipat	INS Telecom	2, Bishan Sarup Colony, Opp Bus Stand, Near Hotel Deep, Panipat Jagdeep	Sachdeva	0180-3091860, 5005360, 9812072860
46	Haryana	Rohtak	Telecentre	Shakti Market, Civil Hospital Road, Near Chhotu Ram Chowk, Rohtak-124001	Mr. Madaan	01262-247242, 9896243092, 09355671666
47	Haryana	Sonipat	Teleworld	Ground Floor, Main Market, Main Railway Road, Opp. Old Civil Hospital, Sonipat - 138001.	Vipin Dua	1303090889
48	Haryana	Yamunanagar	Manish Communications	Shop No.3, Sharma Colony, Near Mahindra Petrol Bunk, Yamunanagar - 135005	Vinod Kumar Mittal	9355327374
49	Jharkhand	Jamshedpur	Tirupati Teletech	Chakravarti Compound, Near Hotel Castel, Contractors area, Bistupur, Jamshedpur-831001	Abhijeet Mukherjee	09334800350
50	Jharkhand	Ranchi	Satya Systems & Solutions	158, Opp Hotel Palace, Kadru, Ranchi-834002	Amit Rastogi	0651-2341361, 9835167667
51	Karnataka	Bangalore	Meenakshi	#129, Lalbagh Main Road, Bangalore-560027	Mr. Ramesh.	080-56992943,

# TATA Service Center List

Sr	Circle	City Name	ASCs	Address Person	Contact	Phone
			Electronics			30617345, 09341210375, 51146822
52	Karnataka	Bangalore	Optima Mobile Services	24/2, Rajkumar Road, Near Subramanyanagar Police Station, 1st Block, Rajajinagar, Bangalore - 560 010.	Unni Krishnan	080-23131953, 080-57722205, 09341266656
53	Karnataka	Bangalore	Optima Mobile Services	B-3, Mallikarjun Complex, Opp R T Nagar Police Station, 80 Feet Road, R T Nagar, Bangalore-560032	Prasad	8030610202
54	Karnataka	Bangalore	Pranav infocom	91/92, Hemachandra complex, Near VGP Show room, 4th block, jayanagar, Bangalore-560011	S.V.Sirish	080-56697937, 26552551
55	Karnataka	Bangalore	Pranav infocom	267/1, 1st Main Road, 6th Cross, Behind Shanti Sagar, Domlur Layout, Bangalore-560071	S.V.Sirish	80-56969937, 51256309
56	Karnataka	Bangalore	Ascent Communication	No:113, St Johns Church road, Bangalore - 5	Naveen	080-30914856
57	Karnataka	Belgaum	Hello India Telecom	G-4, Maratha Mandir Complex, Khanapur Road, Near Railway Flyover, Belgaum - 590 001.	Sanjay	9845327531, 09341101800
58	Karnataka	Hubli	Networld	shop no : B6, Laxmi complex, Court circle, Hubli- 580020	Mr. Mahendar	0836-3090671, 98452-54251, 0836-3090671
59	Karnataka	Mangalore	Innovative Infocom	15-10-537/11, Jayavarma Centre, Mallikatte Circle, Kadri, Mangalore - 575002.	Sebastin Fernades	0824-56632441
60	Karnataka	Mysore	K.K.Marketing,	1432/9, Tribhuvan Towers, opp Vetenary Hospital, Dewan's Road, Dhanwantri Road Cross, Mysore -570001	Mr. Karunakaran.	09342115003, 09342120789
61	Karnataka	Gulbarga	Aishwaraya Communication	G-15, G.R. Complex, Opp Mini Vidhan Soudha Main Road, Gulbarga	Mallikarjun	9342356000, 9342355116
62	Kerala	Ernakulam	Zenicon Infocom(P) limited	2nd floor, Tharian's Building, opp. Ship Yard, M.G. Road, Ernakulam-682015	Jaimon Joseph	0484-2359511, 9349271511
63	Kerala	Irinjalakuda	Akbar Mobiles	376-44, Near St. Josephs college junction, Irinjalakuda-680121	Mr. Sebastian	0480-830796
64	Kerala	Karunaga pally	Supreme Enterprises	Opp to KSRTC Bus stand, Karunagapally-690518	Mr. Ratish	0476-2620282

# TATA Service Center List

Sr	Circle	City Name	ASCs	Address Person	Contact	Phone
65	Kerala	Kollam	Digital Infosystems	MC-3087, New Block, Bishop Jeromi Nagar, Chinnakada, Kollem-691001	Johnson Lawrence	0474-2760647, 9846007059
66	Kerala	Kottayam	SVM Technologies	NSS Bulbing, Near Pallipurathukavu Temple, Kodimapha, Kottayam - 686 002	Rajesh K S	0481-2565303, 9847310123
67	Kerala	Kozhikode	Domain Infosystems	Domain Infosystems, 2nd Floor, Darussalam Complex, Mavoor Road, Kozhikode - 673 004	Mukundan	0495-2722222
68	Kerala	Manjeri	Integrated Computer Systems	Royal Tower, TB Road, Manjeri - 676121	Mr. Thomas Chacko	0483-3099686
69	Kerala	Mavellikarr	Ettutharayil Agency	Ettutharayil complex, K P Road, Kayamkulam-690502	Anu T cheriyan	0479-2441760, 09388900025
70	Kerala	Pallakad	Akbar Mobiles	N.S. Towers, Kalamandapam junction, Palakkad - 678 001	Suresh	0491-2529829, 9847086446
71	Kerala	Thiruvananthapuram	Appolo Systems	TC 20/2392, Kalpalayam, Karamana P.O., Thiruvananthapuram - 695 002.	Santosh	0471-2340523
72	Kerala	Trichur	Akbar Mobiles	Kadarathodh Building, North Bus stand, Trichur - 680 001	Sojan	0487-2323424
73	Madhya Pradesh	Bhopal	Neha Sales Corporation	F-104, Anmol Tower, E-5/14, Commercial Zone, Arera Colony, Bhopal-462016	Ashok Hirwani	0755-5277247 2424088, 9826072327
74	Madhya Pradesh	Gwalior	Computer Clinic	Global Apartments, City Centre, Opp Income Tax Office, Gwalior.	Rishi Sharma	9329302200
75	Madhya Pradesh	Indore	Neha Sales Corporation	Shop No.18, Ground Floor, Johari Palace, M.G.Road, Indore - 452001	Ashok Hirwani	0731-5091833, 9826072327
76	Madhya Pradesh	Jabalpur S M	Shopee	846, Chattarpur Bhavan, Nr. Ashoka Hotel, Wright Town, Jabalpur, Pin 482002	Vikas Jain	0761-5063183
77	Chattisgarh	Raipur Cybernet Systems		B-2, 1st Floor, Garchaz Complex, Jail Road, Raipur - 492001	Anand Singh	9826132918 9826132918
78	Madhya Pradesh	Ujjain	Galaxy Computers & Communication	43/2, Varruchi Marg, Opp Madhav Nagar Police Staion, Freeganj, Ujjain	Amitabh Chhajhlani	9893003099
79	Maharashtra	Amravati	Scorpio Services	Shop No. 84, Ground Floor, Gulshan Towers, Nr. Panchasheel Cinema, Amravati, Pin-444601	Mr. Pramod	0721-2567302, 09370151826,

## TATA Service Center List

Sr	Circle	City Name	ASCs	Address Person	Contact	Phone
80	Maharashtra	Aurangabad	Unique Telematics	Shop no.108/B, Behind Sajawat Handloom, Tapdiya Super Market, Nirala Bazar, Aurangabad-431001	Mr. Mahesh	9422156874, 0240-2356447, 9823007730, 09325210364
81	Maharashtra	Chinchwad (Pimpri)	Ritz Communication	Shop No 22, Gawde Kunal garden, Pimpri-Chinchwad Link Road, Chinchwad, Pune-411033	Mr. Reyaz	020-7485613, 020-30961900, 09890339777
82	Maha rashtra	Jalgaon	Saranag Services	B-288, Golani Market, Jalgaon	Mr. P.M.Waghanna	982331703
83	Maha rashtra	Kohlapur	SMS Services	S5, Diwan Tower, Opp. Nutan Marathi School, Near Mirajkar Tikky, Kolhapur, Pin -416005.	Prakash Patil	0231-2541120, 9823026120
84	Maha rashtra	Margoa	Comlink Synergies India Pvt Limited.	Ground Floor, Shop No.i, Garden view building, Next to UTI Bank, Near Margao Municipal Garden, Margao-403601	Sunil	09326105629, 9822101522, 09326105637
85	Maha rashtra	Nagpur	Spectrum Marketing	Shop No.2, Dharampeth Towers, West High Court (WHC) Road, Dharampeth, Nagpur - 440010	Sonali	0712-3095700 5618186, 2527823
86	Maha rashtra	Nasik	MOBS Associates	SHOP NO. 12, FIRST FLOOR, KAPOTE-MEHER' MARKET, RENUKA NAGAR, WADALA NAKA, DAWRKA, NASIK - 422 001.	Girish Bhangre	0253-5623613, 09370291070, 09371531078
87	Maha rashtra	Panjim	Comlink Synergies India Pvt Ltd	Shop No. 5, Dr Atmaram Borkar Road, Next to RIL Mutual Fund, Panjim, Goa-403001	Sunil	9326105629
88	Maha rashtra	Pune	Digital Concepts	Shop No. 5, Indulal Complex, Besides Kaka Halwai, LBS Marg, Navi Peth, Pune-411030	A Ahmed	020-4012921, 09371029798
89	Maha rashtra	Pune	Mobile World	G-25, AKSHAY COMPLEX, DHOLE PATIL ROAD, PUNE-411 001	Pawan Mantri	098230 93335
90	Maha rashtra	Sangli	Ramesh Electronics	Opp. Kanya Purohit prashala, Rajwada, Sangli-416416	Suresh Shegane	0233-2327601, 9823085176, 09372107601
91	Maha rashtra	Solapur	Jawaharlal Radio Service	184, Gold Finch Peth, nr Hotel Ritesh, Solapur - 413007.	Prasanna J Chavan	0217-2725030, 9422458830, 9823317081

## TATA Service Center List

Sr	Circle	City Name	ASCs	Address Person	Contact	Phone
92	Mumbai	Kalyan	Vintech Solutions	SHOP- 14, GROUND FLR, ARCHIES APARTMENT, OAK BAUG,KALYAN-421301	Pawan	09322877555
93	Mumbai	Vasai	E-Link Solutions	Shop No.5, Type C, Bldg no.5/6, Shanti Vihar, Mira Road -E, Pin Code : 401107.	Kamlesh	022-28552087, 09323182084
94	Mumbai	Mumbai	Asbolute Networks	A007, Vishal Shopping Centre, Next to Vishal Hall, Near Station, M.V.Road, Andheri (E), Mumbai - 400 069	Arun	022 39544800, 9322252390
95	Mumbai	Mumbai	Bombay Telecom Services	211, 212, Navjeevan Commercial Society, Building No:3., Second Floor, Above Hasumkh Tea, Mumbai Central (E), Mumbai: 400004.	Tejinder Singh Kalha	9323900612,
96	Mumbai	Mumbai	Sai Tele Services	A-110, Satyam Commercial Complex,M.G.Road, Ghatkoper (E), Mumbai - 400 077.	Mr. Suresh Kotle	022-56299540, 39533603, 9820188338
97	Mumbai	Mumbai	Creative Solutions	SHOP NO 6 AMBIKA COOPERATIVE HOUSING SOCIETY, JAWAHAR NAGAR ROAD NO 2 NEAR RAILWAY CROSSING, GOREGAON WEST, MUMBAI 400062	Anand	022-28769003, 022-39533603, 9820188338
98	Mumbai	Mumbai	LG Service Centre	Third Floor, Trade World,Kamala Mills Compound, Senapati Bapat Marg, Lower Parel, Mumbai-400013	Rajib Saha	022-24947375, 09323190401
99	Mumbai	Thane	Vinay Technologies Pvt Ltd	Shop no 3, Minal Chhaya Aptt, Muncpal Corporation Road, Panch Pakhadi, Thane (W) - 400601	Vinod Jakotiya	022-25304960, 9821068231, 09322213342
100	Mumbai	Navi Mumbai	Hello World	Shop No 53,GF, Welfare Chambers, Sector-17, Vashi, Mumbai-400703	Mahesh	022-27657705, 09322641396
101	Mumbai	Khar(W) Telecom Corporation	Komplex	1,Satguru Shopping Center, Illrd road, Khar(W), Mumbai	Mr. Mohammad	022-26461917, 09323395024
102	Mumbai	Panel	Oceanic Tele System	Shop No.10, Prajapati Arcade,Sector 15, New Panel (E), Dist. Raigad.	Shailash Bobade	022-56104542, 09322217221
103	Orissa	Bhubneshwar	S.A.INFOSYS	291 Bomikhal, Opp.Akamra cinema hall, Bhubaneswar-751010	Sarabjeet Singh	0674-257313/4
104	Orissa	Cuttack	O.A. INFOTECH	Behind Govt Bus Stand, Badambadi, Cuttack -753012	Manas Mahapatra	0671-2312613
105	Punjab	Amritsar	Bajaj Telecommunication	87, G Floor, Nehru Complex, Lawrence Road, Amritsar-143001	Suman Bajaj	09356024827, 9814650314, 0183-3958859

## TATA Service Center List

Sr	Circle	City Name	ASCs	Address Person	Contact	Phone
106	Punjab	Barnala	Unique Infotech	Mittal Street, Near M C Office, Barnala-148101	Pankaj Goyal	01679-238007
107	Punjab	Bathinda	Lalli's Lalli's Gallery	1139-A, First Floor, Amrik Singh Road, Nr Gole Digg, Bhatinda-151005	Ashok Kakria	0164-2239500 2236337, 9814222310
108	Punjab	Chandigarh	Vignesh Services	S.C.O-189-90, Sec-34, Chandigarh	Mukesh Arya	0172-3018028, 09316134655
109	Punjab	Hoshiarpur	Kuldip's Mobile Care	Dhobian Wali Gali, Phagwara Road, Hoshiarpur-146001	Kuldip	01882-226906, 9815073906
110	Punjab	Jalandhar	Mobile Center	Shop No-7, Gobind Market, Opp-Beri Hospital, Nakodar Road, Jalandhar.	Jogesh Diwan	0181-3092666, 9814029696, 9815314060
111	Punjab	Ludhiana	Shahi Communication	Shop No.5, 4X International, 583 L, Model Town, Ludhiana	Amit Shahi	0161-3944190
112	Punjab	Malerkotla	Prime Infocomm	Opp. Main gate, Govt College, Malerkotla-148023	Rohit Bansal / Raj Verma	01675-253899, 9814040066, 01675-331979
113	Punjab	Moga	Super Communication	Pawan Market, Opp shankar Batteries, Court Road, Moga-142001	Jai Deep Mehta	9356314398
114	Punjab	Patiala	Image Services	84, First Floor, Leela Bhawan, Patiala-147001	Rohit Bansal	0175-222796, 9815761262
115	Rajasthan	Jaipur	Kamakshi Telecom	105, 1st floor, Paradise, C-61 (A), Sarojini Marg, C-Scheme, Jaipur-302001	Rahul Bhargav	0141-2365575, 09314512863
116	Rajasthan	Jaipur	Alpha Infotech Systems	F-1, First Floor, Krishna Mall, Lakshmi Mandir Crossing, Tonk Road, Jaipur-302015	Shatrughan Mangal	0141-5106777, 09314717171 0141-3099724
117	Rajasthan	Jodhpur	Omega Electronics	UG/4, Adeshwar Tower, Main Chopasani Road, Opp.Gehlot Watch Co, Jodhpur-342003	Pratap Singh	0291-3091214, 09314717171
118	Rajasthan	Kota	Cyber Infosystems	26, Ground floor, Kalawati Palwal market, Gumanpura, Kota-324007	Shyam Maheshwari	0744-2398153, 09352603354, 09352620153
119	Rajasthan	Udaipur	Ficusa	13, Darshanpura, Opp. M.B. Commerce College Gate,	Virendra Ranka	0294-2410002,

## TATA Service Center List

Sr	Circle	City Name	ASCs	Address Person	Contact	Phone
			Enterprises	Nr Computer Zone, Udaipur-313002		2413002, 09314410002
120	Tamilnadu	Chennai	Unicare Infocomm Services	73, Nutech Plaza, Shop no G-3, G Floor, Arcot Road, Kodambakkam, Chennai - 600 024.	R M Rajesh / Kartik	044-24724666, 9841036466
121	Tamilnadu	Chennai	GS Systems	547/352, F M Towers, Mount Road, Nandanam, Chennai-6000035	Kanirajan	044-24330889, 9884160010
122	Tamilnadu	Chennai	U Com Technologies Pvt. Ltd.	Shop#3, Door # 24, New #30, Balfour Apartments, Balfour Road, Kilpauk, Chennai - 600 010.	Shyam	044-52174656, 52175115, 9884187800
123	Tamilnadu	Chennai	Escomm Systems India P Ltd	No 57-7, Arunodaya Apartments Next to Hotel Sindhoori, Near by Everest Bus Stop, Ponnammalai High Road, Chennai-600003	Mrs N S Vijaysri	044-30901688, 25612212
124	Tamilnadu	Chennai	Genesis Communication	63/3, First main road, Gandhi Nagar, Adyar, Chennai-600020	Mr. Suresh	044-24401188
125	Tamilnadu	Coimbatore	Fast Track	Sudera Complex, 354B, 100 Feet Road, COIMBATORE - 641012	Anand Prakash	0422-2490577, 9843080040, 09363100080
126	Tamilnadu	Cuddlore	Kasturi Cellular Service	NO: 37 (2C) BHARATHI ROAD, CUDDALORE. 607 001, CUDDALORE DISTRICT, TAMIL NADU.	Mr. Raghupati	04142-220183
127	Tamilnadu	Erode	JANS Electronics	148, Mettur Road, Opposite shakti vinayak temple, Dana Complex, Erode-638011	M Kanan	0424-2258526, 9443263508
128	Tamilnadu	Madurai	Devaa Electronics	No.4, Thirumakulam North Street, Near Ayyappan koil, Thhallakulam, Madurai-625002	Guna	0452-5360995, 0452-2526179, 09344107995
129	Tamilnadu	Pondicherry	Digital Logistics	126/2, Perumal Koil Street (Bharathi Street Cutting), Pondicherry-605001	G Singaravelu	9843093348, 09345453531, 0413-5210148
130	Tamilnadu	Salem	Global Care Service	Sixer Complex, 121/19A, Sarada College Road, Next to Abi Medical Centre, Salem - 636007	Vasudev Nayak	0427-3090535
131	Tamilnadu	Thanjavur	Z M Electronics	33, New Municipal Shopping Complex, Opp LIC, Gandhi ji road, Thanjavur-613001	Ziauddin	04362-272595, 09360313254

## TATA Service Center List

Sr	Circle	City Name	ASCs	Address Person	Contact	Phone
132	Tamilnadu	Tirunevelli	Classic Electronic	39, Trivendrum Road, Opposite Kalimark, Welcome Complex, Palayamkottai, Tiruniveli-627002	Erkins	0462-2575801
133	Tamilnadu	Tirupur	Shri Vasavi Electronics	# 155-303, Mangalam Road, Karuvam palayam, Tirupur -641604	MR.U.B. Bala Murali	0421-3091438, 98422-74300, 09363005560
134	Tamilnadu	Trichy	S K Electronics	Raj Complex, 9/A EVR Road, Puthur, Trichy- 620017	Krishnan	0431-2771946, 9843178104, 09345101502
135	Tamilnadu	Vellore	Matha Communication	4, S.LN Plaza, Opposite Odai Pillar Koil, Gandhinagar, Vellor - 632006	Gunaa Shekhar	0416-2240800
136	Uttar pradesh	Agra	NSC Computers	Shop No G-124, Block No- 29, Sanjay Place, Agra - 282 002	Rajiv Singhal	0562-2520032, 09319111350
137	Uttar pradesh	Agra	Space Consultancy & Services	UG 1 & 2, & Opp. Jaihind Hotel, Merchant Chamber, Sadar Bazar, Agra-282001.	Tanvir	9358311202
138	Uttar pradesh	Aligarh	A V Computer Services	G-1, Ganpati Plaza, Jha Compund, Marris Rd, Aligarh-202001	Vaibhav	0571-2506148, 9412274391
139	Uttar pradesh	Allahbad	B. P. Electronics	G-11, Indira Bhawan, Ground Floor, Civil Lines, Allahbad-211001	Ms Naina Pandey	0532-2608088
140	Uttar pradesh	Bareilly	Sapan Infotech	G - 64 A Kunwar Complex, Near Gupta Watch Co, 116 Civil Lines, Bareilly	Sanjeev Singh	9359102467
141	Uttar pradesh	Dehradun	Krishna Communication	Shop No 15A, Meedo Plaza, Rajpur Road, Dehradun, Uttaranchal-248001	Vinod	0135 3090895, 09358112922, 09358119696
142	Uttar pradesh	Ghaziabad	Concessionair Documentation India Pvt Ltd(CDIL)	C-83, Rajnagar District Center (RDC), Ghaziabad	Arun Sharma	0120-3092011
143	Uttar pradesh	Gorakhpur	Eternal Electronics	Shop No.11, Pandey Complex, 33, Kasya Road, Opp DIG Bunglow, Gorakhpur -273001	Ram Pratap	0551-2204520
144	Uttar pradesh	Kanpur	AR Infotech	111/402, Ashok Nagar, Kanpur Pin 208012	Manoj Shukla	0512 3111662, 9839068734, 0512-3093011

## TATA Service Center List

Sr	Circle	City Name	ASCs	Address Person	Contact	Phone
145	Uttar pradesh	Lucknow	NET COM	3 way road, City Point, Opp Krishi Bhawan, Lucknow-226024	Kawaljeet	0522-3094222
146	Uttar pradesh	Meerut	Systech Computers	F-124/125 1st floor Ganga Plaza, Begum Bridge Road, Meerut-250002	Vineet Goyal	0121-2691167, 09358416631
147	Uttar pradesh	Muzaffarnagar	Jai Computer Services	Shop No. 4, 1st Floor, Roorkee road, Near Shiv Chowk, Central Bank Mkt, Muzaffarnagar-251001	Manohar Singh	0131-2635483, 9412110215
148	Uttar pradesh	Noida	M R Telecom	J-45, First Floor, Sector-18, NOIDA-201301	Kailash Aggarwal	0120-2591440, 9871197801
149	Uttar pradesh	Saharanpur	Maharaj Communications	Near Maharaja Palace, Delhi Road, Saharanpur-247001	Pankaj Malhotra	0132-2720881, 09358311202
150	Uttar pradesh	Varanasi	Shivam Mobile Distributers	Shop No.5, B37/115-B-1 Baradari Complex, Rathyatra Crossing, Varansi Pin 221010	Rishi Mohan	0542-2363296, 9839241004
151	W Bengal	Assansol	Sky Computer & Telecom	Islam Market, Nuruddin Road, Assansol-713301	Syed Arshad Ali	0341-2207719, 9832160886
152	W Bengal	Burdwan	San Infosys	Tikonia Bus Stand, Central Mkt, GT Road, Burdawan-713101	Sanjit Debnath	0342-3090265, 9832192170
153	W Bengal	Calcutta	Benma Infosol Pvt Ltd.	P-168/1 CIT Road, Scheme VIII, KOLKATA 700 067	Arun Surana	033-30943176
154	W Bengal	Calcutta	JP Computers	5B Ekdalia Place, Kolkata - 700019	Somim Kabir	033-24401923
155	W Bengal	Calcutta	Jaksom Engineering Pvt Ltd	Block-A, Shop-1, Ambika Vihar, 1/1 Harduttrai Chamarua Road, Howrah- 711001	P.Mukherjee	033- 30950383
156	W Bengal	Calcutta	Skylink	8/1A, Little Russel Street, Calcutta-700071	H R Molla	033-30903814, 033-32091037
157	W Bengal	Durgapur	Tech International	Red Cross Road, City Centre, Durgapur-713216	Amitava Banerjee	0343-2546893, 9434002244