

This device is not intended for sale in the USA.

Part 15.21 statement

" Change or Modifications that are not expressly approved by the manufacturer could void the user's authority to operate the equipment. "

Part 15 Class B Compliance

This device and its accessories comply with part15 of FCC rules.Operation is subject to the following two conditions:

- (1) This device & its accessories may not cause harmful interference.
- (2) This device & its accessories must accept any interference received, including interference that may cause undesired operation.

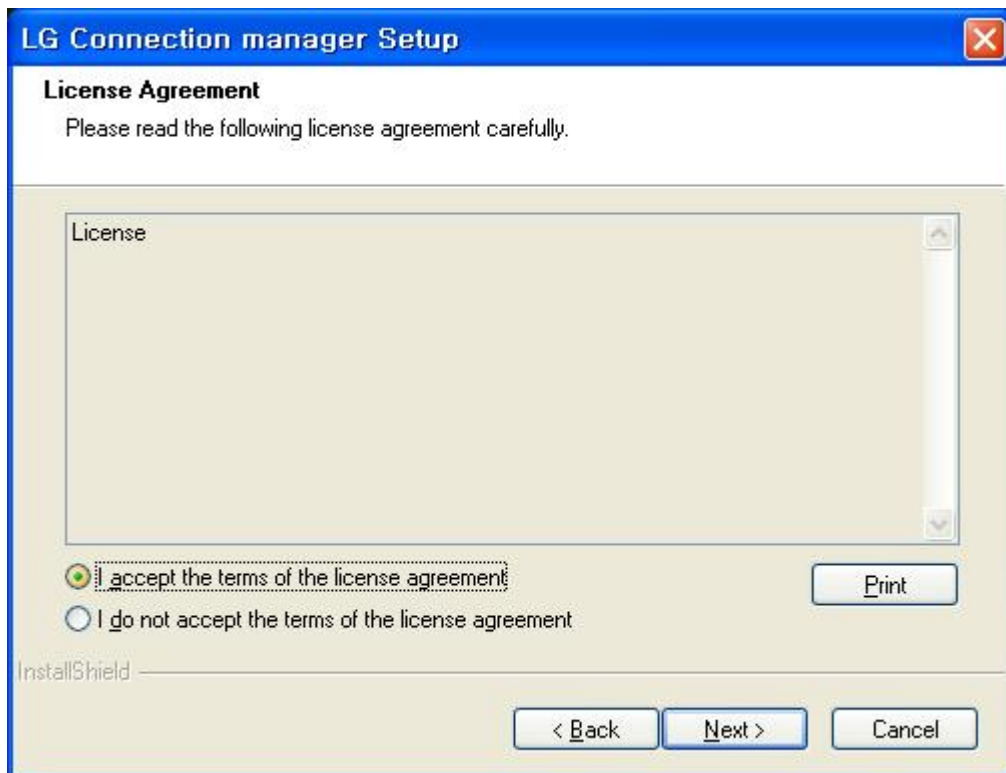
LGCM Installation Guide

□ Installing the LG Connection Manager S/W

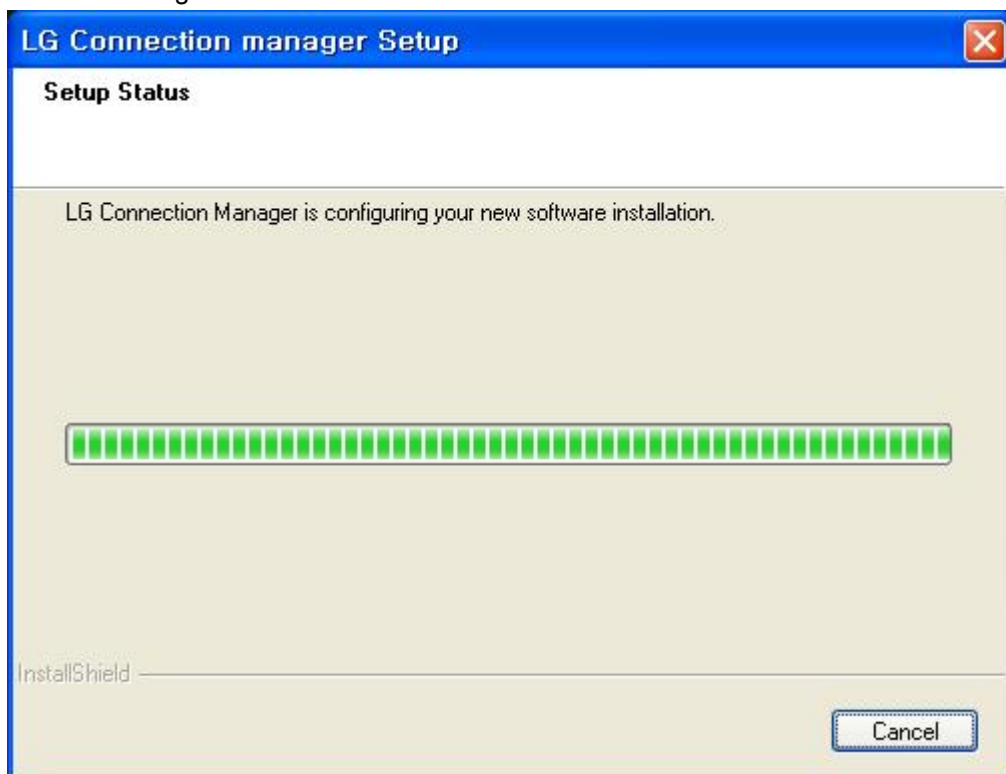
1. Run setup.exe
2. You will then see the Ericsson Wireless Module Install shield Wizard, and follow the instructions to proceed with installation.
3. When the follow screen appears, click the “Next >” button.



4. When the follow screen appears, select the "I accept the terms of the license agreement" and click the "Next > " button.



5. It is installing.



6. When the installation is complete, press the [Finish] button and the installation message window will disappear.

