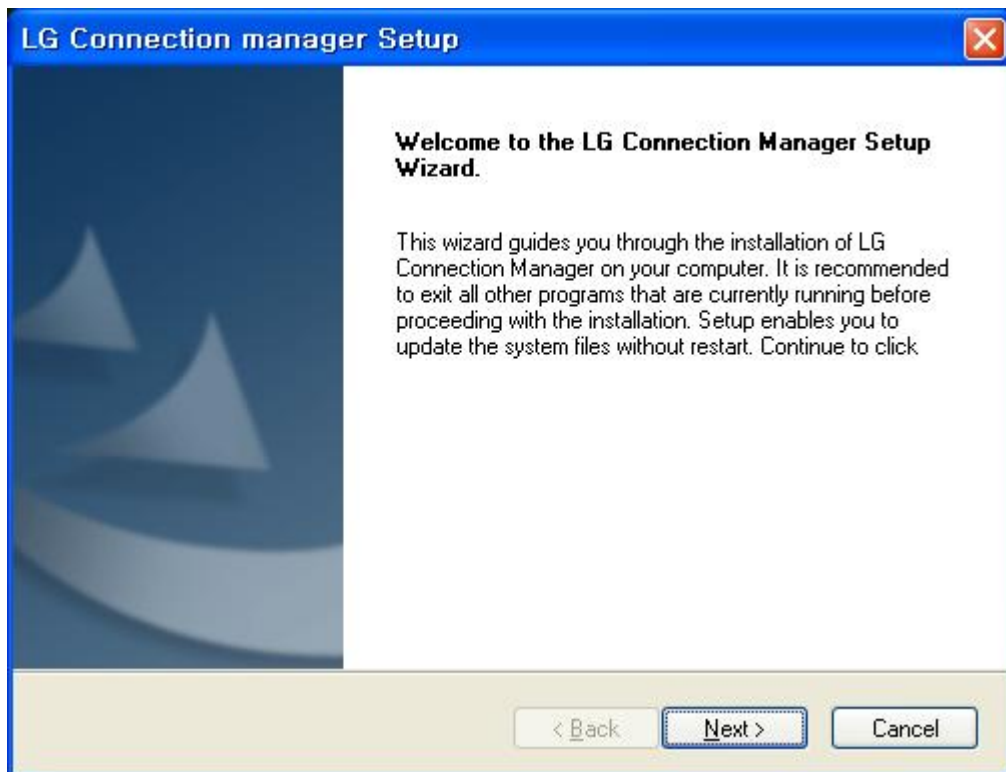


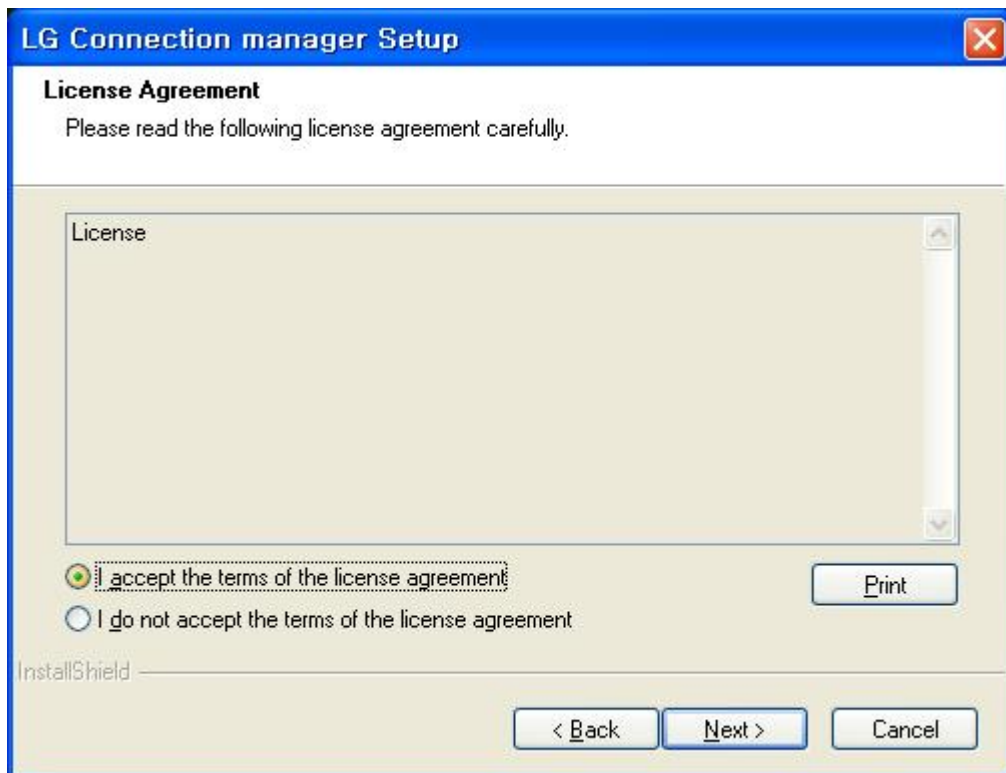
LGCM Installation Guide

□ Installing the LG Connection Manager S/W

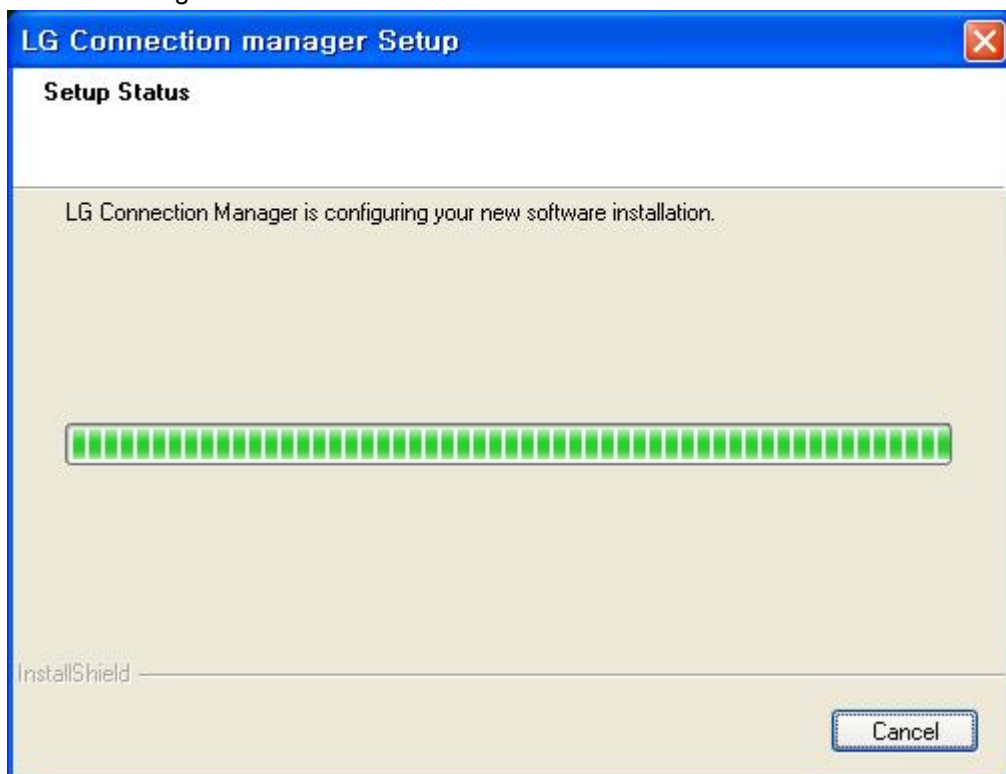
1. Run setup.exe
2. You will then see the Ericsson Wireless Module Install shield Wizard, and follow the instructions to proceed with installation.
3. When the follow screen appears, click the “Next >” button.



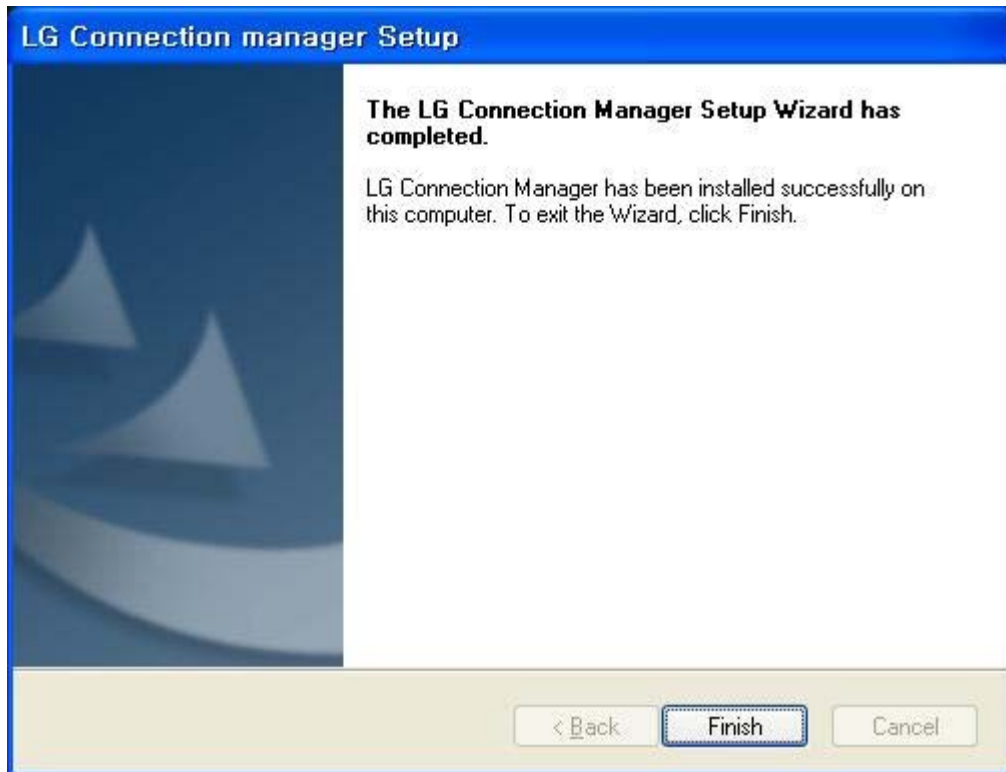
4. When the follow screen appears, select the "I accept the terms of the license agreement" and click the "Next >" button.



5. It is installing.



6. When the installation is complete, press the [Finish] button and the installation message window will disappear.



FCC Regulatory Compliance Statement

To comply with RF exposure compliance, the following restrictions and requirements must be followed when this device is integrated in the final host end product.

- Maintain at least a 20 cm separation between the antenna and the user's body.
- The max. antenna gain for this device must not exceed :
 - Cellular Band < -3.53 dBi
 - PCS Band < -1.84 dBi
- The antenna(s) used for this transmitter must not be collocated or operating in conjunction with any other antenna or transmitter within a host device, except in accordance with FCC multi-transmitter product procedures.
- A label with the following statements must be attached to the host end product: This device contains Tx FCC ID: BEJLUM900T
- The user manual of final host must be clearly defines operating requirements and conditions that must be observed to ensure compliance with current FCC RF exposure guidelines.
- The host end product must comply applicable FCC Part 15 unintentional emission testing requirement and be properly authorized per FCC Part 15.
- This device is not authorized to be used in the portable host where the antenna to the body of user is less than 20 cm.