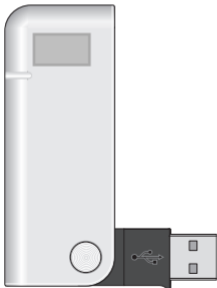


HSPA USB Modem

LUU-2110TI

User Guide



Part 15.21 statement

" Change or Modifications that are not expressly approved by the manufacturer could void the user's authority to operate the equipment. "

Part 15.105 statement

This equipment has been tested and found to comply with the limits for a class B digital device, pursuant to Part 15 of the FCC Rules.

These limits are designed to provide reasonable protection against harmful interference in a residential installation. This equipment generates uses and can radiate radio frequency energy and, if not installed and used in accordance with the instructions, may cause harmful interference to radio communications.

However, there is no guarantee that interference will not occur in a particular installation. If this equipment does cause harmful interference or television reception, which can be determined by turning the equipment off and on, the user is encouraged to try to correct the interference by one or more of the following measures:

- Reorient or relocate the receiving antenna.
- Increase the separation between the equipment and receiver.
- Connect the equipment into an outlet on a circuit different from that to which the receiver is connected.
- Consult the dealer or an experienced radio/TV technician for help.

Part 15 Class B Compliance

This device and its accessories comply with part 15 of FCC rules.

Operation is subject to the following two conditions:

- (1) This device & its accessories may not cause harmful interference.
- (2) This device & its accessories must accept any interference received, including interference that may cause undesired operation.

Body-worn Operation

This Mobile Broadband USB Modem, model LUU-2110TI, is approved for use in normal size laptop computers only (typically with 12" or larger display screens). To comply with FCC RF exposure requirements, this modem should not be used in configurations that cannot maintain at least 5mm (approximately 0.2 inches) from your body.

Also, when using the USB extension cable, place the USB modem away from your body or any other transmitter of the laptop or PC.

This USB modem has been tested for compliance with FCC/IC RF exposure limits in the laptop computers configurations with horizontal and vertical USB slots and can be used in laptop computers with substantially similar physical dimensions, construction and electrical and RF characteristics.

When using this USB modem in your computer, it must not be co-located or simultaneously transmit with any other radio (for example, Bluetooth or WiFi radios) in the computer.

Copyright

LGE Co., Ltd holds the copyright for this manual.

This manual should not be reproduced or distributed without prior written consent by LGE Co., Ltd.

Registered Trademark

The registered trademark used in this manual is a registered trademark owned by the corresponding company.

Confidential & Proprietary

This manual is the technical property of LGE Co., Ltd and it is prohibited to copy or utilize the manual without prior consent from the technical data department.

Introduction

Thank you for purchasing **LUU-2110TI** from LGE Co., Ltd.
The **LUU-2110TI** is a USB Modem using HSPA for wireless internet anytime and anywhere.

* **HSPA (High Speed Packet Access):** This is a mobile communication technology for sending/receiving data at a significantly faster speed than that of W-CDMA or CDMA.

Specific Features

- **General Features**

- SIM Support
- Internet, Intranet
- SMS
- Contacts

- **Mechanical Features**

- microSD compatible card
- Main Antenna
- UMTS Diversity Antenna (1900MHz)
- 2 Color LED
- Dimensions: 29mm(W) × 14.7mm(H) × 73.9mm(D)

- **Data Rate**

- Download: Up to 7.2 Mbps
- Upload: Up to 2 Mbps

- **Frequency Band**

- GSM: 850 / 900 / 1800 / 1900 MHz
- UMTS: 1900 / 2100 MHz

Configuration

The configuration of the **LUU-2110TI** product is as shown below:



Main Body



Manual



USB Extension Cable

The configuration of the product may be changed without prior notice to improve the functions of the product.

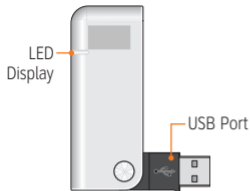
Conditions for Use

The minimum specification for a PC using **LUU-2110TI** is as described below:

- **Operating System:** Windows® 2000, XP or Vista(32bit, 64bit), Mac® OS X
- **CPU:** Pentium 4, 1 GHz or above
- **Memory:** 128 MB RAM or above
- **Hard disk space:** 100 MB or above
- **Connection port:** USB slot A-Type

Name of Each Part

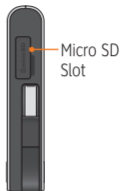
- Front Part



- Rear Part



- Side Part

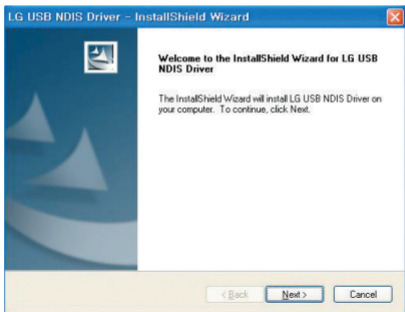


- Lower Part

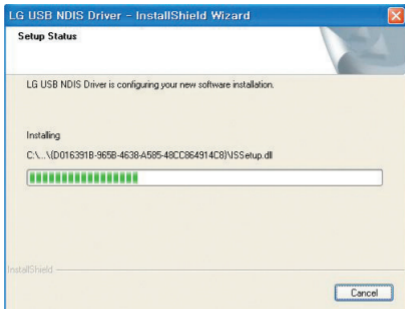


How to install USB driver

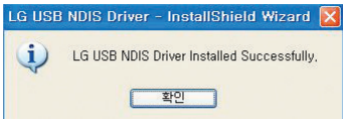
- 1 Unzip "LGUSBNDISDriver_WHQL_Eng_Ver_1.0_All.zip" file
- 2 Connect **LUU-2110TI** USB modem to laptop
- 3 It will be detected as "mass storage" device
- 4 Run "LGUSBNDISDriver_WHQL_Eng_Ver_1.0_All.exe"
- 5 Press "Next" button



6 And installation will be executed



7 Press "OK" button



8 Unplug and plug **LUU-2110TI** USB modem