

* This device is not intended for sale in the USA.

Part 15.21 statement

" Change or Modifications that are not expressly approved by the manufacturer could void the user's authority to operate the equipment. "

Part 15.105 statement

This equipment has been tested and found to comply with the limits for a class B digital device, pursuant to Part 15 of the FCC Rules.

These limits are designed to provide reasonable protection against harmful interference in a residential installation.

This equipment generates uses and can radiate radio frequency energy and, if not installed and used in accordance with the instructions, may cause harmful interference to radio communications. However, there is no guarantee that interference will not occur in a particular installation.

If this equipment does cause harmful interference or television reception, which can be determined by turning the equipment off and on, the user is encouraged to try to correct the interference by one or more of the following measures:

- Reorient or relocate the receiving antenna.
- Increase the separation between the equipment and receiver.
- Connect the equipment into an outlet on a circuit different from that to which the receiver is connected.
- Consult the dealer or an experienced radio/TV technician for help.

Part 15 Class B Compliance

This device and its accessories comply with part15 of FCC rules.

Operation is subject to the following two conditions:

- (1) This device & its accessories may not cause harmful interference.
- (2) This device & its accessories must accept any interference received,
including interference that may cause undesired operation.

Body-worn Operation

This Device has been tested for typical body-worn operations with the distance of 0.79inches(2.0cm) from the user's body.

To comply with FCC RF exposure requirements, a minimum separation distance of 0.79inches(2.0cm) must be maintained from the user's body.

Additionally, Belt clips, holsters & other body-worn accessories may not contain metallic components.

IMG377 USER GUIDE

This manual may differ from the phone depending on the phone software version and service provider used.



Disposal of your old appliance

- When this crossed-out wheeled bin symbol is attached to a product it means the product is covered by the European Directive 2002/96/EC.
- All electrical and electronic products should be disposed of separately from the municipal waste stream via designated collection facilities appointed by the government or the local authorities.
- The correct disposal of your old appliance will help prevent potential negative consequences for the environment and human health.
- For more detailed information about disposal of your old appliance, please contact your city office, waste disposal service or the shop where you purchased the product.

P/N: MMBB000000(1.0)

Turning Your Phone On and Off

- Hold down the [END] key until the phone switches on.
- To switch the phone off, hold down the [END] key until the power-off image displays.

Making a Call

- Enter a phone number including the area code.
- Press the [SEND] key to call the number.
- When finished, press the [END] key.

Answering a Call

- When the phone rings and the phone icon flashes on the screen, press the [SEND] key or the left soft key to answer.
- If the Any Key menu option (Menu 6.4.2.2), has been set, any key press will answer a call except for the [END]key or the right soft key.
- End the call by pressing the [END] key.

Note: After the call ends, the phone will go back to standby mode.

Making an international call

- Press and hold the key for the international prefix. The '+' character automatically selects the international access code.
- Enter the country code, area code, and the phone number.
- Press [send] key to call the number.

How to set the tone

Ringtone

- Press the left soft key [Menu] and select [Settings - Profiles] using the up/down navigation keys.
- Select [Personalise] and choose Ringtones menu.
- Press the left soft key [OK] and then you can set the desired ringtone.

Tip

› If you want to change your ringer to vibrate, select Vibrate mode or press and hold the upper navigation key.

Ringtone/Keypad/Message/Call alert tones and volumes

You can select Ringtone/Keypad/Message/Call alert tones and volumes. You can change the sound that will occur when a key is pressed, or volume level. [Menu - Settings - Profiles - Personalise]

Installing the SIM Card and Charging the Battery

Installing the SIM Card

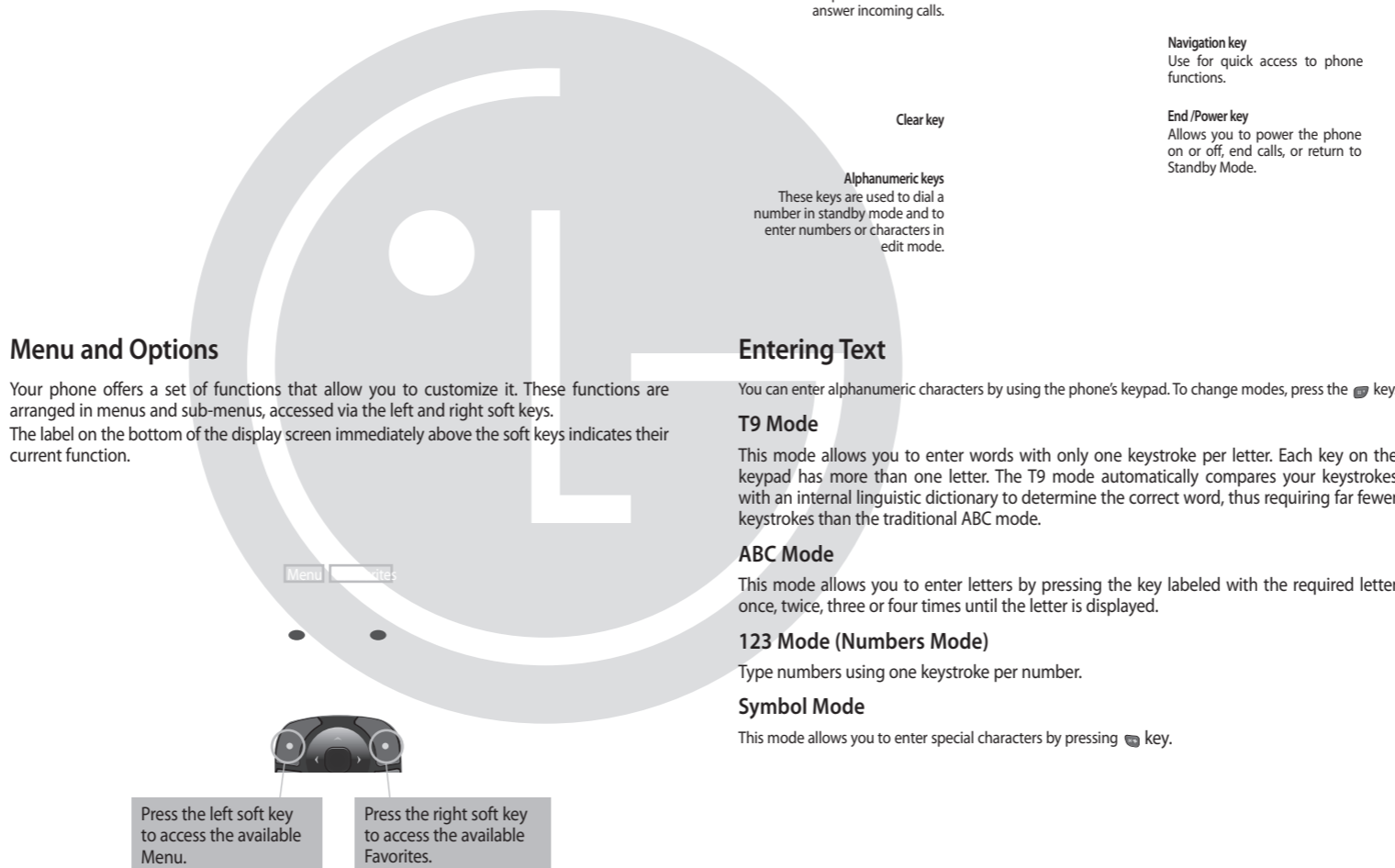
When you subscribe to a cellular network, you are provided with a plug-in SIM card loaded with your subscription details, such as your PIN, any optional services available and many others.

Important!

- › The plug-in SIM card and its contacts can be easily damaged by scratches or bending, so be careful when handling, inserting or removing the card. Keep all SIM cards out of the reach of small children.
- › USIM is not supported in a phone.

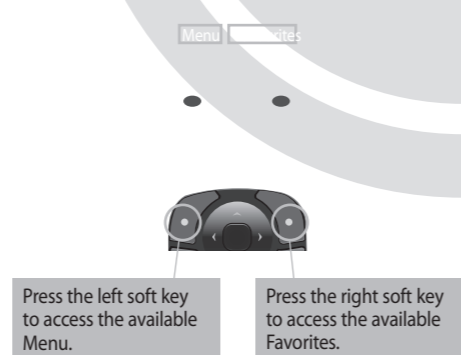
Illustrations

- Open battery cover
- Insert your SIM
- Close the battery cover
- Charge your battery



Menu and Options

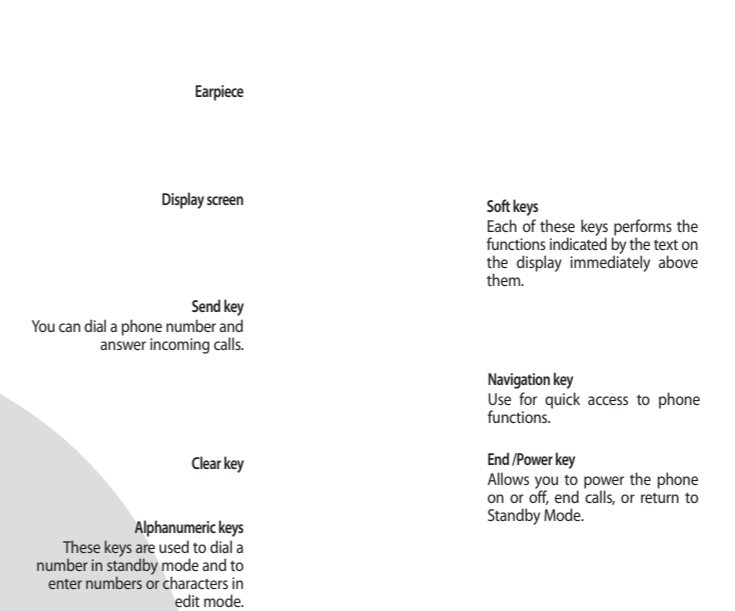
Your phone offers a set of functions that allow you to customize it. These functions are arranged in menus and sub-menus, accessed via the left and right soft keys. The label on the bottom of the display screen immediately above the soft keys indicates their current function.



Menu tree

1. Messaging 1.1 New message 1.2 Inbox 1.3 Drafts 1.4 Outbox 1.5 Sent 1.6 Listen voice mail 1.7 Info message 1.8 Templates 1.9 Settings	3. Call history 3.1 All calls 3.2 Missed calls 3.3 Dialed calls 3.4 Received calls 3.5 Call duration	6. Settings 6.1 Date & Time 6.2 Language 6.3 Display 6.4 Call 6.5 Auto keylock 6.6 Security 6.7 Power save 6.8 Network selection 6.9 Reset settings 6.0 Memory status
2. Contacts 2.1 Search 2.2 New contact 2.3 Speed dials 2.4 Copy all 2.5 Delete all 2.6 Memory status 2.7 Information	4. Profiles (SIM Service) 5-1 Game 5-2 Calendar 5-3 Alarm 5-4 Voice memo 5-5 Memo 5-6 Calculator 5-7 Stopwatch 5-8 Unit converter 5-9 World clock 5-0 Lost Mobile Track	

Phone Components



Entering Text

You can enter alphanumeric characters by using the phone's keypad. To change modes, press the key.

T9 Mode

This mode allows you to enter words with only one keystroke per letter. Each key on the keypad has more than one letter. The T9 mode automatically compares your keystrokes with an internal linguistic dictionary to determine the correct word, thus requiring far fewer keystrokes than the traditional ABC mode.

ABC Mode

This mode allows you to enter letters by pressing the key labeled with the required letter once, twice, three or four times until the letter is displayed.

123 Mode (Numbers Mode)

Type numbers using one keystroke per number.

Symbol Mode

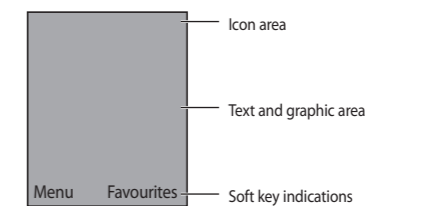
This mode allows you to enter special characters by pressing key.

Quick feature reference

This section provides brief explanations of features on your phone.

Messaging	Menu 1
This menu includes functions related to SMS (Short Message Services).	
New message	This menu includes functions related to SMS (Short Message Services).
Inbox	You will be alerted when you have received a message.
Drafts	This menu shows the message saved in temporary.
Outbox	This menu allows to view the message which is about to be sent or has failed to be sent.
Sent	This menu allows you to view the messages which have already been sent, including time and content.
Listen voice mail	This menu provides you with a quick way of accessing your voice mailbox (if provided by your network).
Info message	Info service messages are text messages delivered by the network to your handset.
Templates	There are pre-defined messages in the list. You can view and edit the template messages or create new messages.
Settings	This menu allows you to set features of your network service provider.

Display Information



On-Screen Icons

The table below describes various display indicators or icons that appear on the phone's display screen.

	Tells you the strength of the network signal.
	Call is connected.
	Shows that you are using a roaming service.
	The alarm has been set and is on.
	Tells you the status of the battery.
	You have received a text message.
	You have received a voice message.
	Vibrate only menu in profile.
	General menu in profile.
	Outdoor menu in profile.
	Silent menu in profile.
	Headset menu in profile.
	You can view your schedule.

FM Radio (This function may be different in different regions.)

- Press the corresponding number key of a channel to store the selected radio station.
- After presetting radio channels, you can listen to another channel by pressing the corresponding number key.
- You can access the following option menus by pressing the left soft key [Options].
 - › **Edit channel:** You can adjust frequency and channel 0.1 MHz at a time using the Left/Right navigation keys and number keys.
 - › **Auto scan:** If you turn "Auto Scan Now?" on, this automatically sets the radio channel. When "Save this Station?" message pops up and you select Yes, the selected frequency will be stored.
 - › **Reset channels:** You can delete all channels you saved.
 - › **Listen via wired headset:** Select this to listen to the radio through the built-in speaker. To turn off the speaker, select "Listen via headset" in the [Options].

Contacts	Menu 2
Search	You can Search for contacts in Phonebook. Note: Instant searching is available by inputting the initial letter of the name you want to search.
New contact	You can add phonebook entries by using this menu.
Speed dials	Assign contacts to any of keys and .
Copy all	You can copy all entries from SIM card memory to Phone memory and also from Phone memory to SIM card memory.
Delete all	You can delete all entries from SIM card memory or Phone memory.
Memory status	You can check free space and memory usage.
Information	› Service dial numbers: Access the list of service numbers assigned by service provider safely. › Own numbers: You can save and check your own numbers in SIM card. › Business card: This option allows you to create your own business card featuring your name, mobile phone number and so on.

Call history

You can check the record of missed, received, and dialed calls only if the network supports the Calling Line Identification (CLI) within the service area. The number and name (if available) are displayed together with the date and time at which the call was made. You can also view call durations.

Call history Menu 3 (Continued)

All calls	Displays all the lists of three types (Received/Dialled/Missed calls) by time.
Received calls	This option lets you view the last 10 incoming calls.
Dialled calls	This option lets you view the last 10 outgoing calls (called or attempted).
Missed calls	This option lets you view the last 10 unanswered calls.
Call duration	Allows you to view the duration of your incoming and outgoing calls.

Profiles Menu 4

You can adjust and customize the phone tones.

Tools Menu 5

Game	In this menu, you can manage the Game installed in your phone.
Calendar	You can check track of daily or monthly schedules.
Alarm	Allows you to set one of three alarms. The current time is displayed at the top of the screen when you select an alarm to set. At the alarm time, the Alarm icon will be displayed on the LCD screen and the alarm will sound.
Voice memo	You can record voice memo.

Guidelines for safe and efficient use (Continued)

Electronic devices

All mobile phones may get interference, which could affect performance.

- › Do not use your mobile phone near medical equipment without requesting permission. Avoid placing the phone over a pacemaker, i.e. in your breast pocket.

Road safety

Check the laws and regulations on the use of mobile phones in the areas when you drive.

- › Do not use a hand-held phone while driving.
- › Use a hands-free kit, if available.
- › Pull off the road and park before making or answering a call if driving conditions so require.

Blasting area

Do not use the phone where blasting is in progress. Observe restrictions, and follow any regulations or rules.

Network service

The wireless phone described in this guide is approved for use on the GSM 900, DCS 1800 network.

- › Dualband is a network dependent feature. Check with your local service provider if you can subscribe to and use this feature.

- › A number of features included in this guide are called Network Services. These are special services that you arrange through your wireless service provider. Before you can take advantage of any of these Network Services, you must subscribe to them through your service provider and obtain instructions for their use from your service provider.

Tools Menu 5 (Continued)

Memo	You can create a list of tasks.
Calculator	This contains the standard functions such as +, -, x, ÷: Addition, Subtraction, Multiplication and Division .
Stopwatch	Stopwatch is available just as common stopwatches we see and use in daily life.
Unit Converter	This converts any measurement into a unit you want.
World clock	Allows you to determine the current time in another time zone or country.
Lost mobile track	The LMT feature of this phone provides you with the ability to have a tracking system in place for your mobile in case you loose or misplace it.

Settings Menu 6

You can set the following menus for your convenience and preferences.

Date & Time	You can set functions relating to the date and time.
Language	You can change the language for the display texts in your phone. This change will also affect the Language Input mode.
Display	You can change settings for the phone display.
Call	You can set the menu relevant to a call.
Auto keylock	When this feature is enabled, the phone keypad is locked.

Guidelines for safe and efficient use (Continued)

Potentially explosive atmospheres

Do not use the phone at a refueling point. Do not use near fuel or chemicals.

In aircraft

Wireless devices can cause interference in aircraft.

- › Turn off your mobile phone before boarding any aircraft.

Children

Keep the phone in a safe place out of children's reach. It includes small parts which if detached may cause a choking hazard.

Emergency calls

Emergency calls may not be available under all cellular networks. Therefore, you should never depend solely on the phone for emergency calls. Check with your local service provider.

Troubleshooting

This chapter lists some problems that you might encounter while using your phone. Some problems require that you call your service provider, but most of problems you encounter are easy to correct yourself.

Message	Possible causes	Possible Corrective measures
SIM error	There is no SIM card in the phone or you may have inserted it incorrectly.	Make sure that the SIM card is correctly inserted.
No connection to the network	Signal weak Outside GSM network	Move higher to a window or open space. Check service provider coverage map.
Codes do not match	When you want to change a security code you have to confirm the new code by entering it again. The two codes that you have entered do not match.	Contact your Service Provider.
Function cannot be set	Not supported by Service Provider or registration required	Contact your Service Provider.
Calls not available	Dialling error New SIM card inserted Charge limit reached	New network not authorised. Check for new restrictions. Contact Service Provider or reset limit with PIN 2.

Settings Menu 6 (Continued)

Security	This menu allows you to set the phone safely. <ul style="list-style-type: none">› PIN code request : You can set the phone to ask for the PIN code of your SIM card when the phone is switched on.› Phone lock : You can use a security code to avoid unauthorized use of the phone.› Call barring : The Call barring service prevents your phone from making or receiving a certain category of calls. This function requires the call barring password.› Fixed dial number (SIM dependent): You can restrict your outgoing calls to selected phone numbers. The numbers are protected by your PIN2 code. The numbers you wish to allow access to once this service has been enabled, must be added to the contacts after enabling Fixed dial number.› Change codes : PIN is an abbreviation of Personal Identification Number to prevent use by unauthorized persons. You can change the access codes: Security code, PIN code, PIN2 code.
Power save	If you set this to On, you can save the power when you are not using the phone.
Network selection	You can select a network that will be registered either automatically or manually. Usually, the network selection is set to Automatic.
Reset settings	You can initialize all setting values as defaults. You need a Security code to activate this function.
Memory status	You can check free space and memory usage of each repository.

Guidelines for safe and efficient use (Continued)

Battery information and care

- › You do not need to completely discharge the battery before recharging. Unlike other battery systems, there is no memory effect that could compromise the battery's performance.
- › Use only LG batteries and chargers. LG chargers are designed to maximize the battery life.
- › Do not disassemble or short-circuit the battery pack.
- › Replace the battery when it no longer provides acceptable performance. The battery pack may be recharged hundreds of times before it needs to be replaced.
- › Do not expose the battery charger to direct sunlight or use it in high humidity, such as the bathroom.
- › Risk of explosion if battery is replaced by an incorrect type.
- › Dispose off used batteries according to the manufacturer's instructions.

Message	Possible causes	Possible Corrective measures
Phone cannot be switched on	On/Off key pressed too briefly	Press On/Off key for at least two seconds.
	Battery empty	Charge battery. Check charging indicator in the display.
Charging error	Battery contacts dirty	Clean contacts.
	Battery totally empty Temperature out of range	Charge battery. Make sure the ambient temperature is right, wait for a while, and then charge again.
	Contact problem	Check power supply and connection to the phone. Check the battery contacts, clean them if necessary.
Phone loses network	No mains voltage Charger defective Wrong charger Battery defective	Plug in to a different socket or check voltage. If the charger does not warm up, replace it. Only use original LG accessories. Replace battery.
Number not permitted	Signal too weak	Reconnection to another service provider is automatic.
	The Fixed dial number function is on.	Check settings.

Guidelines for safe and efficient use

Please read these simple guidelines. Ignoring them may be dangerous or illegal. Further detailed information is given in this manual.

Warning

- › For your safety, use ONLY specified ORIGINAL batteries and chargers.
- › Switch off the phone in any area where required by special regulations, e.g. in a hospital where it may affect medical equipment.
- › Batteries should be disposed off in accordance with relevant legislation.

Product care and maintenance

WARNING! Only use batteries, chargers and accessories approved for use with this particular phone model. The use of any other types may invalidate any approval or warranty applying to the phone, and may be dangerous.

- › Do not disassemble this unit. Take it to a qualified service technician when repair work is required.
- › The unit should be kept away from heat sources such as radiators or cookers.
- › Use a dry cloth to clean the exterior of the unit. (Do not use any solvents.)
- › Do not keep the phone next to credit cards or transport tickets; it can affect the information on the magnetic strips.

Guidelines for safe and efficient use (Continued)

Exposure to radio frequency energy

Radio wave exposure and Specific Absorption Rate (SAR) information

This mobile phone model KG370 has been designed to comply with applicable safety requirement for exposure to radio waves. This requirement is based on scientific guidelines that include safety margins designed to ensure safety of all persons, regardless of age and health.

The radio wave exposure guidelines employ a unit of measurement known as the Specific Absorption Rate, or SAR. Tests for SAR are conducted using standardized methods with the phone transmitting at its highest certified power level in all used frequency bands.

- › While there may be differences between the SAR levels of various LG phone models, they are all designed to meet the relevant guidelines for exposure to radio waves.
- › The SAR limit recommended by the international Commission on Non-Ionizing Radiation Protection (ICNIRP) is 2W/kg averaged over ten (10) gram of tissue.
- › The highest SAR value for this model phone tested by DASY4 for use at the ear is 1.16 W/kg (10g) and when worn on the body is 0.363 W/kg (10g).
- › SAR data information for residents in countries/regions that have adopted the SAR limit recommended by the Institute of Electrical and Electronics Engineers (IEEE) is 1.6 W/kg averaged over one (1) gram of tissue.

General

- ›