



User Guide

Config Name: X140 Series

Some of the components may look different from the picture.

Chapter1.Important notice for user



1-1. Read this carefully before using the Notebook PC.

▶ Regulatory Notices

1-1 USA Notice

Federal Communications Commission

Notice

This equipment has been tested and found to comply with the limits for a Class B digital device, pursuant to Part 15 of the FCC Rules. These limits are designed to provide reasonable protection against harmful interference in a residential installation. This equipment generates, uses, and can radiate radio frequency energy and, if not installed and used in accordance with the instructions, may cause harmful interference to radio communications. However, there is no guarantee that interference will not occur in a particular commercial installation, or if operated in a residential area.

If harmful interference with radio or television reception occurs when the device is turned on, the user must correct the situation at the user's own expense. The user is encouraged to try one or more of the following corrective measures:

- Re-orient or relocate the receiving antenna.
- Increase the separation between the equipment and receiver.
- Connect the equipment into an outlet on a circuit different from that on which the receiver is connected.
- Consult the dealer or an experienced radio/TV technician for help.

Modifications : The FCC requires the user to be notified that any changes or modifications made to this device that are not expressly approved by LG Company may void the authority to operate the equipment.

Cables : Connections to this device must be made with shielded cables with metallic RF/EMI connector hoods in order to maintain compliance with FCC Rules and Regulations.

RF Radiation Exposure Statement : This equipment complies with FCC RF radiation exposure limits set forth for an uncontrolled environment. This device and its antenna must not be co-located or operation in conjunction with any other antenna or transmitter.

Caution: Regulations of the FCC and FAA prohibit airborne operation of radio-frequency wireless devices because their signals could interfere with critical aircraft instruments.

Declaration of Conformity for products marked with the FCC logo

This device uses, generates and radiates radio frequency energy. The radio frequency energy produced by this device is well below the maximum exposure allowed by the Federal Communications Commission (FCC).

This device complies with Part of FCC Rules and Regulations. Operation is subject to the following two conditions. (1) This device may not cause harmful interference, and (2) This device must accept any interference received, including interference that may cause undesired operation.



Responsible Party :

LG ELECTRONICS U.S.A., INC.
1000 SYLVAN AVENUE
ENGLEWOOD CLIFFS, NJ
Telephone : 1-800-243-0000



1-2. Canada Notice

This Class B digital apparatus complies with Canadian ICES-003, Issue 4, and RSS-210, No. 4 (Dec. 2000) and No. 5(Nov. 2001).

"To prevent radio interference to the licensed service, this device is intended to be operated indoors and away from windows to provide maximum shielding. Equipment (or its transmit antenna) that is installed outdoors is subject to licensing."

Cet appareil numérique de la classe B est conforme à la norme NMB-003, No. 4, et CNR-210, No. 4 (Dec. 2000) et No. 5(Nov. 2001).

« Pour empêcher que cet appareil cause du brouillage au service faisant l'objet d'une licence, il doit être utilisé à l'intérieur et devrait être placé loin des fenêtres afin de fournir un écran de blindage maximal. Si le matériel (ou son antenne d'émission) est installé à l'extérieur, il doit faire l'objet d'une licence. »

"Operation is subject to the following two conditions:

- (1) this device may not cause interference, and
- (2) this device must accept any interference, including interference that may cause undesired operation of the device."

1-3. European Union

This notebook PC may contain following RF modules.

CE	for Realtek RTL8191 SE
CE	for Broadcom BCM92070MD_REF
CE 0168	for LG LUM850T, LUM900D
CE 0560	for Ericsson F3307

Translated Statements of Compliance

[English]

This product follows the provisions of the European Directive 1999/5/EC.

[Danish]

Dette produkt er i overensstemmelse med det europæiske direktiv 1999/5/EC

[Dutch]

Dit product is in navolging van de bepalingen van Europees Directief 1999/5/EC.

[Finnish] Tämä tuote noudattaa EU-direktiivin 1999/5/EC määräyksiä.

[French]

Ce produit est conforme aux exigences de la Directive Européenne 1999/5/EC

[German]

Dieses Produkt entspricht den Bestimmungen der Europäischen Richtlinie 1999/5/EC

[Greek]

To προϊόν αυτό πληροί τις προβλέψεις της Ευρωπαϊκής Οδηγίας 1999/5/EC.

[Icelandic]

Þessi vara stent reglugerð Evrópska Efnahags Bandalagsins númer 1999/5/EC

[Italian]

Questo prodotto è conforme alla Direttiva Europea 1999/5/EC.

[Norwegian]

Dette produktet er i henhold til bestemmelsene i det europeiske direktivet 1999/5/EC.

[Portuguese]

Este produto cumpre com as normas da Diretiva Europeia 1999/5/EC.

[Spanish]

Este producto cumple con las normas del Directivo Europeo 1999/5/EC.

[Swedish]

Denna produkt har tillverkats i enlighet med EG-direktiv 1999/5/EC.

1-4. Brazil Notice

Este equipamento opera em caráter secundário, isto é, não tem direito a proteção contra interferência prejudicial, mesmo de estações do mesmo tipo, e não pode causar interferência a sistemas operando em caráter primário.

1-5. France Notice

Pour la France métropolitaine

2.400 - 2.4835 GHz (Canaux 1 à 13) autorisé en usage intérieur

2.400 -2.454 GHz (canaux 1 à 7) autorisé en usage extérieur

Pour la Guyane et la Réunion

2.400 - 2.4835 GHz (Canaux 1 à 13) autorisé en usage intérieur

2.420 - 2.4835 GHz (canaux 5 à 13) autorisé en usage extérieur



1-6. Italy Notice

A general authorization is requested for outdoor use in Italy.

The use of these equipments is regulated by:

1. D.L. gs 1.8.2003, n. 259, article 104 (activity subject to general authorization) for outdoor use and article 105 (free use) for indoor use, in both cases for private use.
2. D.M. 28.5.03, for supply to public of RLAN access to networks and telecom services.

L'uso degli apparati è regolamentato da:

1. D.L. gs 1.8.2003, n. 259, articoli 104 (attività soggette ad autorizzazione generale) se utilizzati al di fuori del proprio fondo e 105 (libero uso) se utilizzati entro il proprio fondo, in entrambi i casi per uso private.
2. D.M. 28.5.03, per la fornitura al pubblico dell'accesso R-LAN alle reti e ai servizi di telecomunicazioni.

1-7. Latvia Notice

A license is required for outdoor use for operation in 2.4 GHz band.

1-8. Contact Information

Country	Telephone	Email or website
Poland	801-545454	http://pl.lgservice.com
Hungary	06-40-54-5454	http://hu.lgservice.com
Spain	902-500-234	http://es.lgservice.com
Netherlands	31-24-3731375	LG@ICT-FIX.COM
France		
Germany		
Italy		
Sweden		
UK		
Portugal	808-78-54-54	http://pt.lgservice.com
Canada	888-542-2623	nbwarranty@lge.com
Australia	1300-788-184	http://au.lgservice.com
China	400-819-9999	http://cn.lge.com
India	1800-1809999	http://in.lgservice.com
Korea	82-2-219-7777 (Korean)	globalsvc@lge.com
	82-31-610-9657 (English)	
Singapore	65-6512-0550	lgesg@lge.com
USA	1-800-243-0000	usapcsvc@lge.com

*The contact numbers listed above are subject to change without prior notice

SAFETY REGULATION NOTICE

Battery

If the backup battery is incorrectly replaced, there is danger of explosion. The lithium battery contains lithium and can explode if it is not properly handled or disposed of. Replace only with a battery of the type recommended by LG.

Australia Notice

- The appliance is not intended for use by young children or infirm persons without supervision.
- Young Children should be supervised to ensure that do not play with appliance.
- If the appliance is supplied from a cord extension set or an electrical portable outlet device.
- The cord extension set on electrical portable outlet device must be positioned so that it is not subject to splashing or ingress of moisture.

European_WEEE



Disposal of your old appliances

1. When this crossed-out wheeled bin symbol is attached to a product it means the product is covered by the European Directive 2002/96/EC.
2. All electrical and electronic products should be disposed of separately from the municipal waste stream via designed collection facilities appointed by the government or local authorities.
3. The correct disposal of your old appliances will help prevent potential negative consequences for the environment and human health.
4. For more detailed information about disposal of your old appliances, please contact your city office, waste disposal service or the shop where you purchased the product.

RJ 45 jack and RJ11 jack

Warning

To avoid electric shock, do not connect safety extra-low voltage (SELV) circuits to telephone-network voltage (TNV) circuits. LAN ports contain SELV circuits and WAN ports contain TNV circuits. Some LAN and WAN ports both use RJ-45 connectors. Use caution when connecting cables.

Disconnect Device

- Plug and connector of the power supply cord
- Output jack of Power supply
- Main Battery Pack



DECLARATION OF CONFORMITY

This device complies with Part 15 of the FCC Rules. Operation is subject to the following two conditions: (1) this device may not cause harmful interference, and (2) this device must accept any interference received, including interference that may cause undesired operation.

Trade Name / Model : LG / LGX14

Responsible Party : LG Electronics, Inc. / Product Safety & Compliance

Address : 1000 Sylvan Avenue Englewood Cliffs, NJ 07632, U.S.A.

Contact Person : Mr. J.C. Lee, General Manager
Tel. No. 1-800-243-0000 For Technical Support
Tel. No. 1-201-266-2420 For FCC Inquiry

Equipment Classification : FCC Class B Peripheral Device (JBP)

Type of Product (EUT) : Notebook PC

Manufacturer : LG Electronics Inc.

Address : 19-1, Cheongho-ri, Jinwi-myeon, Pyeongtaek-si,

Attention : Gyeonggi-do, 451-713, Korea

Mr. H.S. Lee - General Manager

Digital Media Standards Group

We hereby declare that the equipment bearing the trade and model number specified above was tested conforming to the applicable FCC Rules under the most accurate measurement standards possible, and that all the necessary steps have been taken and are in force to assure that production units of the same equipment will continue to comply with the Commission's requirements.



LG Electronics Inc.

Signature

Apr./05/2010

Date

Declaration of Conformity

Suppliers Details

Name LG Electronics Inc
 Address LG Electronics Inc
 19-1, Cheongho-ri, Jinwi-myeon, Pyeongtaek-si, Gyeonggi-do, 451-713, Korea

Product Details

Product and Model Name Notebook PC LGX14
 with the Accessory(ies) AC Power Adaptor ADP-40PH AD, ADP-40PH BD

Applicable Regulation and Standards Details

1. EMC Directives : 2004/108/EC

EN 55022: 2006
 EN 55024: 1998 + A2:2003
 EN 61000-3-2: 2006
 EN 61000-3-3: 1995 + A2:2005

2. R&TTE Directives : 1999/5/EC

ETSI EN 300 328 V1.7.1 : 2006, ETSI EN 301 908-1 V3.2.1 : 2007,
 ETSI EN 301 511 3GPP TS 51.010-1
 ETSI EN 300 489-1 V1.8.1 : 2008, ETSI EN 300 489-7 V1.3.1 : 2005
 ETSI EN 300 489-17 V1.3.2 : 2008, ETSI EN 300 489-24 V1.4.1 : 2007

3. Low Voltage Directives : 2006/95/EC

EN 60950-1 : 2001 + A11:2004

* The year in which CE Marking was affixed: 2010

4. ErP Directives : 2009/125/EC Regulation: 1275/2008/EC

Regulation: 278/2009/EC

EN 62301 : 2005

Declaration

I hereby declare under our sole responsibility that the product mentioned above to which this declaration relates complies with the above mentioned standards, regulation and directives

Name	Issued Date
Seung Hyoun, Ji / Director	Mar. 05, 2010

LG Electronics Inc. - EU Representative
 Veluwezoom 15, 1327 AE Almere, The Netherlands


Signature of representative

► How to protect the human body from the hazardous RF energy exposure.

We recommend that the human body should be kept off at least 15 mm from the external antenna plug-in-radio-card or the internal antenna located in screen section during the operation or moving.



▶ Energy Star



Energy Star Compliance

As an **Energy Star** partner, LG has determined that standard configurations of this product meet the **ENERGY STAR** guidelines for energy efficiency.

The **ENERGY STAR** program is a partnership with electronic equipment manufacturers to promote energy-efficient products.

Reducing energy consumption of products saves money and helps conserve valuable resources. This computer is shipped with power management enabled with the computer set to sleep after 20 minutes of user inactivity.

To wake your computer, click the mouse or touchpad button or press any key on the keyboard.

Using Wake on LAN

1. Select **Start > Computer > Control Panel > View by > Small icons > Device Manager > Network and Adapter**.
2. Right-click the LAN card and select **[Properties]**.
3. When the LAN card properties window is displayed, go to the **Power Management** tab, check the **"You can exit the standby mode using this device"** menu and click **[OK]**.

▶ Using LG Intelligent Update

To install a driver or application, use **LG Intelligent Update** provided by **LG Electronics**.

※ **LG Intelligent Update** comes preinstalled in your system. You can also download the application from the website "www.lge.com".



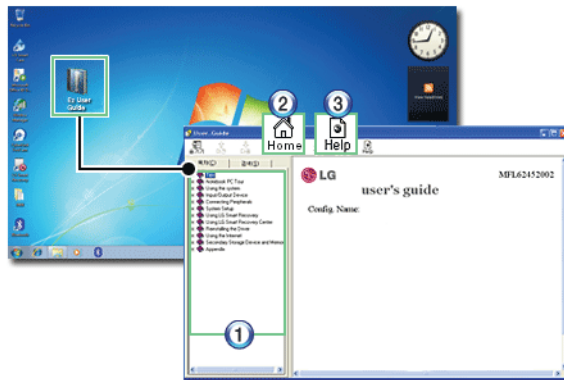
1. Guides you to configure the optimal environment for the system.

2. Provides you with an overview before use.

► Using Ez User's Guide/Ez Troubleshooting

For more convenient use of the machine, we provide you **Ez User's Guide/Ez Troubleshooting**.

Click **Help** button and refer to Tour to learn how to use **Ez User's Guide** and **Ez Troubleshooting**.



1. **Table of Contents**
2. **Home**
3. **Help:** Helps you to find the answers to your questions and solve problems.

► Ez User's Guide





Thank you for purchasing the **LG Electronics** product.

This machine is built on cutting-edge technology and has been tested reliably.








For the sake of convenient use, please read this manual in advance.

The below symbols are to inform you of dangers and safety concerns that you must be aware of. Read the symbol-indicated instructions with caution to avoid any possible mishap.



	Warning	Appears in the case of noncompliance with the instruction that may cause serious physical damage or fatal injuries.
	Caution	Appears in the case of noncompliance with the instruction that may cause minor damage to the body or the machine.
	Tip	Indicates that the following information is added to help the user utilize the machine more conveniently.
	Optional	The Optional symbol indicates that the concerned device is not included in the product package and thus has to be purchased separately, or the device may not be applied to the user's machine depending on model type.

Microsoft, MS, WinPE, and Windows are the registered trademarks of **Microsoft Corporation**.
IBM, IBM Personal Computer, PS/2, and PC AT are the registered trademarks of **International Business Machines Corporation**.

	LG logo is a registered trademark of LG Corporation .
	SONY logo and Memory Stick are the registered trademarks of SONY Corporation .
	Transcend logo is a registered trademark of Transcend Corporation .
	SD logo is a registered trademark of Secure Digital Corporation .
	xD logo is a registered trademark of FUJIFILM Co., Ltd.
 	SRS[®] TruSurround HD and SRS[®] WOW HD is a trademark of SRS Labs, inc. . WOW HD and TruSurround HD technology is incorporated under license from SRS Labs, inc. .

Copyright (C) 2009, **LG Electronics Inc., DigitalMate Co., Ltd.**
Please be understanding that this manual may contain incorrect parts despite our dedicated efforts

to perfect it.

The exemplified figures in this manual may not exactly the same as the real products.

LG Electronics Inc., has rights to modify any part of this manual for the better without prior notice.

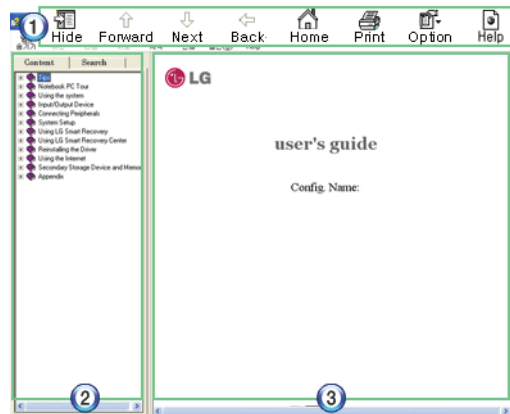
Unauthorized reproduction or duplication of any part of this manual is strictly prohibited.

Country of Origin: China

Manufacturer: Tech-Front(Shanghai)Computer Co., LTD

Company Identifier: LGE

► Ez User's Guide Tour



1. Toolbar

- **Hide/Show:** Hide or show the navigation window.
- **Previous:** Displays the previous page in the order of Table of Contents.
- **Next:** Displays the next page in the order of Table of Contents.
- **Back:** Displays the previous page in the navigation history.
- **Home:** Displays the Home page.
- **Print:** Prints the current page.
- **Option:** Displays options.
- **Help:** Mostly used for touring this guide.

2. Navigation Bar

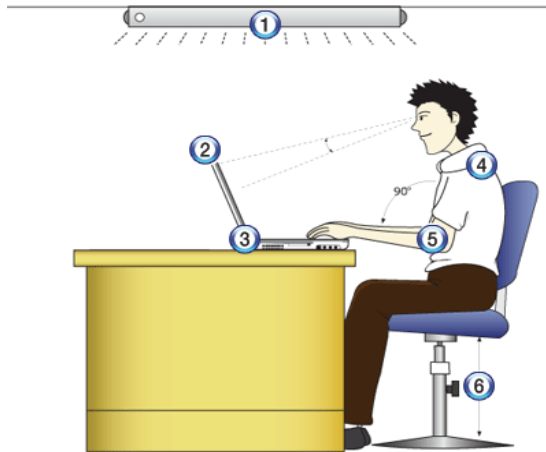
- **Index:** Displays a categorized list of subjects.
- **Search:** Allows users to type key words and search manually.

3. Description Pane



– Displays the explanation of the selected item.

► When using the computer, sit in the good posture as shown below.



1. Do not have light directly reflected on the monitor.
2. Set the upper part of the screen to be on the even level with or slightly lower level than your eyes.
3. Adjust the screen while avoiding illuminated reflection.
4. Stretch the neck and back straight.
5. Keep the hands, wrists, and arms horizontally.
6. Adjust the chair to set the hands and arms properly for the keyboard.



Warning

- Long time use of computer may cause physical fatigue.
- A 10 minutes break after 50 minute use is desirable. Avoid using the computer more than 2 hours a day.
- Take a rest regularly and stretch your body.

► **Adjusting volume (headset and speakers)**

Check the volume before listening to music.



- Before using the headset, check if the volume is too high.
- Do not use the headset too long.
- A headphone that has a resistance higher than 20 Ω can cause electromagnetic interference. Therefore, we recommend you to use a headphone that has a resistance less than 20 Ω .

► System Protection Feature

If the system becomes too hot, the system protection feature automatically stops battery recharging and switches the power mode to Maximum Power Saving or OFF.

The system may not be reactivated until it cools down enough.



1-2. Important safety information

Please avoid any undesirable environmental factor that shortens the machine's life span. Use the machine in a safe and stable place.

※ The warranty does not cover any damage resulting from reckless use or use in undesirable environments.

▶ Using Battery



Warning



Charge the battery only with the provided instrument.
Otherwise, the battery may be damaged presenting a risk of fire.



Do not throw or disassemble the battery.
The resulting impairment may cause an injury, explosion, or fire.



Use batteries certified and acknowledged by **LG Electronic Inc.**
Otherwise, an explosion or fire may occur.



Prevent the battery from being contact with any metallic object like a car ignition key or a paper clip.
Otherwise, the battery may be overheated to be damaged resulting in a fire or an injury.



Keep the battery away from heat.
Otherwise, an explosion or fire may occur.



Do not short-circuit the battery.
Otherwise, it may explode.



Do not dispose of a spent (backup) battery arbitrarily.

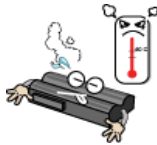
It may explode or cause a fire.

Disposal methods may differ by country and region. Dispose of the spent battery in accordance with the laws and safety rules of the country and region.



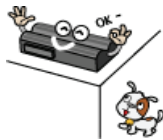
If you find leakage or smell bad odor from the battery, remove the battery and contact the local service center.

It may explode or cause a fire.



Avoid humidity and heat above 60 °C as in cars or saunas.

It may explode or cause a fire.



Keep the battery out of reach of children or pets.

If damaged, it could cause an injury.



Keep the battery from being pierced by a sharp object or a chew of your pet.

It may explode or cause a fire.



Do not sink the battery in water.

Otherwise, the battery may be damaged presenting a risk of explosion.



Ensure that the battery pack is locked to the machine after installation.

Otherwise, the battery pack may be damaged.



Do not use the laptop on top of carpet, blanket or bed. Also, do not put the adapter under the blanket.

The product may malfunction, cause a fire or burn the user due to temperature rise.



Read the directions printed on the battery pack carefully before use.

Keep the battery at room temperature. Refer to other Tips and directions in this guide to store the battery properly.

► Installation



Warning



Do not use the machine in damp places like a laundry room or bathroom.

Moisture may cause a glitch or an electric shock.

The desirable temperature and humidity ranges are from 10 to 35 °C and from 20 to 80 °C RH, respectively.



Dispose of the desiccating agent and wrapping plastic properly.

The desiccating agent and wrapping plastic may cause suffocation.



Use the product in a dust-free environment.

Otherwise, the system may not function properly.



Do not leave any object nearer than 15 cm in from the computer.

Otherwise, lack of ventilation could overheat the machine from inside and you could get a burn from the heat.



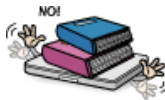
Place the machine in a safe place so that it does not fall.
If dropped, the machine could be damaged and even cause an injury.



Do not leave or use the computer near a magnetic object.
Otherwise, the hard disk and the system may be damaged and fail to operate properly.
Never place the computer on a bag with magnetic objects including magnetic buttons.
Otherwise, the hard disk and the system may be damaged and fail to operate properly.



Operate the product in a place without electromagnetic interference.
Keep a proper distance between the computer and such electronic appliances as speakers that generate strong magnetic fields.
Otherwise, data may be lost from the hard disk or the LCD may show impaired coloration.



Do not put any heavy object on the machine.
If falling, the object could damage the machine and cause an injury.

► Using AC Adapter



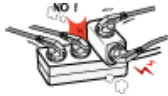
Do not use loose plugs or damaged power cords.
An electric shock or fire may occur.



Do not touch the power cord with your hands wet.
Otherwise, an electric shock may occur.



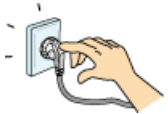
Pull the plug, not the cord, to disconnect the power.
Otherwise, a fire may occur or the product may get damaged.



Operate the product at the proper voltage.
Excessive voltage may result in damage on the product, electric shock or fire.



Use power outlets with an earth pin installed and proper supply of rated electricity.
An electric leakage may cause an electric shock or fire.



Plug the power cord tightly into the outlet.
Loose connection of the power cord could cause a fire.



In the case that a strange noise is heard from the cord or plug, disconnect the power cord from the outlet immediately and contact the service center.
A fire or electric shock may occur.



Never disassemble the power supply and adapter.
A damaged power cord may cause an electric shock or fire.



Use a socket with an earth pin equipped.
If not earthed, the product may cause an electric shock and get damaged.



Ensure that the power outlet is earthed before plugging in.
Otherwise, an electric shock from power leakage may occur.



Always keep the power cord and the outlet clean.
A fire may occur.



Do not impair the cord by bending or pressing it too hard. Keep children and pets from damaging the power cord.
An impaired cord could damage computer parts causing a fire or electric shock.



Disconnect the machine completely from others before cleaning it.
Otherwise, an electric shock or impairment may occur.



If the power circuit and machine are soaked, disconnect the battery, AC adapter, and all others before contacting the local service center.
Otherwise, an electric shock may occur.

► Using Notebook PC



Warning



Clean the computer with a proper agent and dry it completely before using it again.
If the computer is wet while used, an electric shock or fire may occur.



When lightning flashes in your area, disconnect the power, modem, LAN and other connections.
An electric shock or fire may occur.



Do not leave a cup or other containers filled with watery substance near the computer.
If the machine is soaked, a fire or electric shock may occur.



Do not connect the modem to a key telephone system.
A fire may occur or the product may get damaged.



If you have dropped or damaged the computer, disconnect the power and contact the local service center for a safety check.
If a damaged computer is used continuously, an electric shock or fire may occur.



Do not put a lit candle or live cigarette on the computer.
A fire may occur.



The fluorescent lamps on the LCD panel contains mercury.
If you have contacted the liquid from the LCD panel, immediately wash the substance away with water. If you feel any slightest trouble, visit your doctor immediately.



If you smell or see smoke from the computer, stop using the computer and disconnect the power before contacting the local service center.
A fire may occur.



Do not play computer games too much.
Playing a computer game for an extensive time may cause a mental disorder. It could even inflict physical impairments on feeble people including children and the elderly.



You may hear noise while on 3D mode.



Do not leave any object such as a pen on the keypad.

You might break the LCD panel by unwittingly shutting it down with the object remaining on the pad.



Do not press or scratch the LCD panel with a sharp object.

It may cause an impairment.



Ensure the power is off before shutting the panel.

The machine may be deformed due to temperature rise.



The bottom of the computer gets hot when the system is working. Please avoid touching it and do not put it on your laps.



Do not impose excessive force on the LCD panel or drop it.

You could break the LCD glass panel.



Do not forcibly open the LCD panel with one hand.

The machine may be twisted.



To clean the LCD panel, use designated agents and soft cloth and rub the panel in one direction.

Too much force may damage the panel.



When handling computer parts, follow the instructions in the manual.
Otherwise, damage may be inflicted.



Do not put your finger or an object in the PC card slots.
An injury or electric shock may occur.



Install a vaccine program on your computer and do not download illegal programs nor access any corruptive web site such as those pushing pornographic contents.
The system may be infected and impaired.



Ask one of our engineers to run a safety check after your computer has been repaired.
Otherwise, an electric shock or fire may occur.



For minors, we recommend a program that blocks access to illegal or pornographic web sites. Minors' exposure to adult-only contents may inflict psychological instability or even trauma on them. Take an extra precaution for your children if the whole family is using this machine.



Do not press Eject button while the CD-ROM drive is running.
The data may be lost or the disk may spin out unexpectedly to cause an injury.



Keep the machine away from heat-emitting devices such as a heater.
The product may get deformed or catch on fire.



Do not insert other devices than designated ones in the ports.
Otherwise, the product may get damaged.



Do not use a damaged CD-ROM disk or floppy disk.
It may cause product damage or physical injury.



Prevent children from thrusting their finger in the CD drive tray.
The finger may be stuck in the tray and injured.



To remove a CD, turn off the CD program and when the drive lamp is off press Eject button.
Otherwise, the fast spinning CD may spring out of the tray and hurt you.



Do not block the ventilation hole on the sides with any object.
Otherwise, an electric shock may occur.



Do not leave the machine in a car.
The battery may cause an explosion or fire.

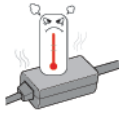


Avoid using a wireless LAN connection within the 5 m radius of a microwave or plasma lamp.
If you have to use wireless LAN and a plasma bulb within the range, however, do it through a channel between 11 and 13.

The transmission rate may drop even if the connection is made.



Turn off the computer if you are not going to use it for an extended time period.
It may overheat the battery.



As the adapter can be hot, do not touch it with bare skin while using the notebook.



Memory

Make sure that the memory cover is securely closed before turning on the machine.

Do not use the machine when the memory cover is open. It may damage the machine.

► Upgrading Notebook PC



Warning



To upgrade the machine, turn off the system and disconnect the power cord and the battery. Disconnect the telephone line linked to the modem, if any.

An electric shock or fire may occur.



When you disassemble and upgrade the machine, prevent children from swallowing any parts including bolts.

If a child swallowed a nut, they may get suffocated. In that case, see the doctor immediately.



Caution



Please use parts certified by **LG Electronics Inc.**

Otherwise, a fire or product damage may occur.



Consult our service engineer before you use a peripheral device not manufactured by **LG Electronics Inc.**

The product may get damaged.



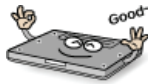
Do not disassemble or moderate the machine arbitrarily.

You could get an electric shock and would not be able to receive the warranty service for that.



Handle devices and parts of the machine with care.

The product may get damaged.



Ensure that everything including the case is reassembled completely before connecting the machine to the power.

Any exposed part may give you an electric shock.



Do not drop any part or device of the machine while disassembling it.

If dropped, it may be damaged and cause an injury.

► Carrying Notebook PC



To carry the machine, turn off the power and disconnect all the cables.

Otherwise, you may trip over the wire, damaging the computer and getting an injury.



During air traveling, follow the directions of flight attendants.

Using a laptop during flight may cause an aircraft accident.



Do not carry the machine with the LCD panel open.
Otherwise, the product may get damaged.



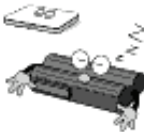
When leaving the machine in a car, keep it in shadow.
The product may be deformed or caught on fire due to temperature rise.



Protect the machine from any shock while carrying it.
System damage or an injury may result.



Carry the machine in a bag designed for it.
Carrying it in an other type of bag may result in product damage.



If the machine is not used for a long time, remove the battery pack and discharge electricity to store them.
That way, the battery can maintain the optimal state.



Do not leave the powered-on computer in a space without enough ventilation (i.e. bags) for an extended or repeated time.
The battery may overheat and cause a fire.

► Safety Notes to Prevent Data Loss (HDD Management)



Caution



Handle the computer with care to prevent a data loss.

Since the hard disk is sensitive to shocks, please make a back-up file of important data all the time.

The manufacturer will not be responsible for any hard-disk data loss caused by your mistake.

Hard disk damage and data loss may occur when:

External shocks are inflicted on the machine while disassembling or installing it.

When the computer is abruptly reset (rebooted) due to power failure, the hard disk may get damaged.

The computer is infected with a virus, tainting the data irrecoverably.

Abrupt turning-off of the computer can damage the computer.

Moving, shaking or pounding the computer while the hard disk is running, and thus causing file damage or bad sectors.



It is recommended to back up the data to minimize damage caused by hard disk damage.

The manufacturer is not responsible for any data loss.

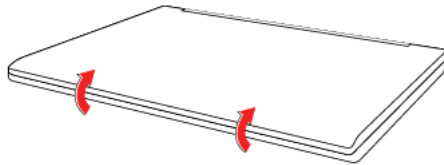
Chapter2.Notebook PC Tour





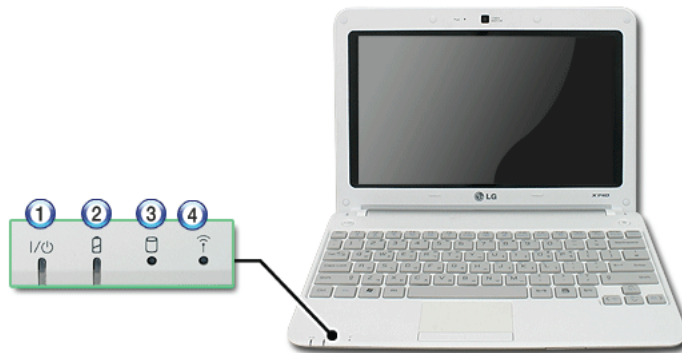
2-1. Opening/Closing Notebook PC

1. Raise the Notebook PC cover upward.
※ Adjust the angle for the best convenient position.
2. Be sure to close the computer after use.





2-2. Operation Status Lamps



1. Power Lamp
 - Blinking: The system is in Standby mode.
 - On: The system is running on the AC power or battery.
 - Off: The system is turned off or in Hibernate mode.
2. AC Power and Battery Status Lamp
 - Off: The AC adapter is not connected.
 - On: The AC adapter is connected.
 - Blinking: The battery is charged less than 10 %.
 - If you try to turn on the system that has entered the Hibernates mode or been turned off after a low-battery alarm, the system will not be turned on but the lamp will blink three times.
3. Hard Disk Drive Lamp
 - The lamp is turned on when the HDD is running.
 - ※ Do not turn off the power forcibly while the hard disk drive lamp is on. Otherwise, the data may get impaired.
4. Wireless LAN lamp
 - Off: Wireless LAN is not in use.
 - Blinking (short interval): Wireless LAN/Bluetooth is connected and data are being transmitted.
 - Blinking (every 2 – 3 seconds): Wireless LAN/Bluetooth is not connected but Wireless Radio is on.
 - Blinking (every 3 – 4 seconds): An access Point is being searched for to connect Wireless LAN/Bluetooth.
 - On: An access point is being searched for or Wireless LAN is connected.
 - ※ The Wireless LAN/Bluetooth lamp may operate differently depending on model type.
 - ※ **Optional** The Wireless LAN card and the Bluetooth device are optional, and so it may not be supported in some models.



Chapter 3. Using the system



3-1. Running on Battery

Notebook PC runs on AC power or battery. This section describes the procedure that the user should take initially for a new system. The provided AC adapter can be used from 100 V to 240 V. Charge the new battery with the AC adapter before use.

※ Refer to [Charging Battery with AC Adapter] in User Guide.

1. Turn the machine over to see the battery pack chamber and equip the pack.
 - Insert the battery pack into the chamber as shown in the following figure and push it in the direction of the arrow until you hear a clicking sound.

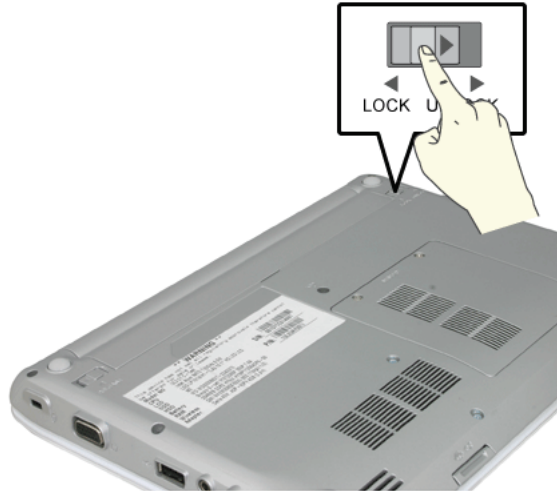


2. Open the machine and turn the power on.
3. Check the battery state.
 - When the battery status lamp is blinking, charge it fully with the AC adapter before using it.





4. Remove the battery pack as shown in the diagram below.



Caution

Use batteries certified and acknowledged by LG Electronic Inc.

- Uncertified batteries may explode.
- Ensure the power is off before changing the battery pack.

Keep the battery pack removed when the machine is not in use.

- Otherwise, a fire and product damage may result.

For a safe and efficient use of battery, follow the below directions.



Warni

- Do not short-circuit the battery.
- Keep the room temperature between 0 °C and 60 °C. Do not expose the machine to the heat hotter than 60 °C.
- Keep the battery out of reach of children.
- A visible swelling of the battery pack indicates a possible danger. When this occurs, contact your local vendor or service center immediately.
- Use only a certified and designated recharger.
- Keep the battery pack away from heat. (Never put it in a microwave.)
- Do not leave inside a car under the summer heat.
- Do not leave or use at a hot and humid place like a sauna.
- Do not use the machine placed on a heating blanket or other heat reserving materials.
- Do not leave the machine turned on inside a closed space.
- Make sure that the power ports are not touched by any metallic objects like a key, coin, necklace, and watch.
- Use only a lithium secondary battery certified and guaranteed by mobile device manufactures.
- Keep the machine dry.
- Do not disassemble or alter the battery pack.
- Before using this machine, read this guide carefully.



For more efficient use of the battery, read the following carefully.

- Natural discharge: The battery runs low naturally even if it is kept unused.
- Periodical full (dis)charge: Repeated recharge in midway shortens the running time gradually. To lengthen the span, charge and discharge the battery to the fullest once or twice. For optimal use, execute the full charge/discharge every 30 to 60 days. Still better, recharge the battery after it has run out.

The battery capacity may change due to chemical reactions during charge and discharge.

- The system checks the charge status of LG batteries frequently, and then calculates and indicates the actual battery duration on the current system setup.
- The battery is wearable goods and thus the life span may be getting shorter as used. The battery running time may also become shorter accordingly.
- When the battery is fully charged the machine stops recharging, and it resumes recharging when the battery charge rate drops below 95 %.
- When the temperature of the battery drops below 9,6 °C, it is charged in a low current. In this case, charging time may stretched to 32 hours or longer.



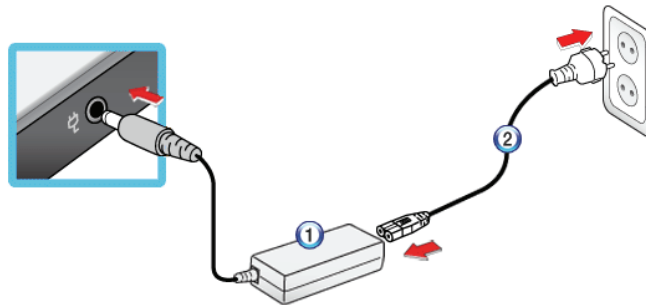
3-2. Charging Battery with AC Adapter

Notebook PC runs on AC power or battery.

This section describes the procedure that the user should take initially for a new system.

※ The provided AC adapter can be used from 100 V to 240 V.

1. Connect the AC adapter to a power outlet with the power cable.
2. Connect the adapter to the machine.



1. AC Adapter
2. Power cable
3. Adjust the LCD panel to the most comfortable angle.
4. Press the power button to turn on the machine.



- You need a different plug to use the AC adapter on 110 V. (The extra plug for 110 V is sold separately.)



Caution

Do not leave a liquid container on the computer.

- The system may be short-circuited and damaged.



Warning

Please use an AC adapter certified by LG Electronics.

- Otherwise, an explosion or fire may occur.
- It may cause a problem in battery charging or system operation.

3-3. Windows 7 Overview

Windows 7 has many advantages in terms of information management and security, enhancing your productivity. **Windows 7** allows you to access information in your computer or in your corporate network more easily and provides better security for your data.

- ※ **Virtual XP Mode** is supported only in **Windows 7 Professional Version** or above. Also this feature may not be supported in some **CPU** models.
- ※ **Windows 7 Starter** and **Home Basic** do not support some functions such as **Aero** and **Flip 3D**.
- ※ In some models, the **Windows Aero** and **Flip 3D** functions can reduce the system speed and hinder normal movie clip play.
- ※ For detailed information about **Windows 7**, select **Start > Help and Support**.

▶ Windows 7 Start Menu

Windows 7 Start menu shows you the new features of **Windows 7** and provides the basic tools for using **Windows 7**, such as **Personalize Windows** and **File Backup**.

1. Click **Start > [Start]**.
 - ※ By clicking the arrow on the right of the **[Start]** button, you can select the menu you want to use.
2. Select an item to execute the task or view the information.
 - ※ Items displayed on the **Windows 7** Start menu may differ depending on the product specifications.





► Windows 7 Desktop

※ Desktop may differ by model type and software version.

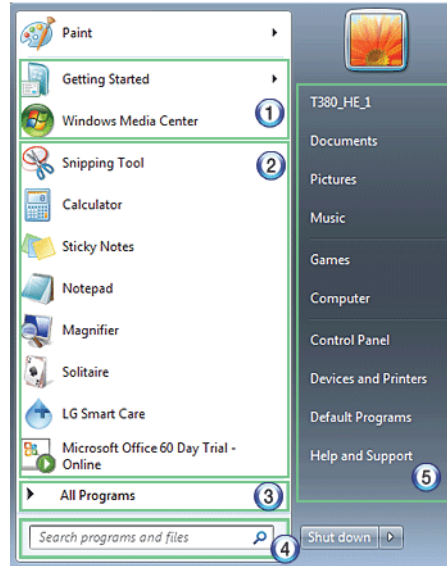


1. **Start** button
 - Unfolds **Start** menu when clicked.
2. **Start** menu
 - Displays **Windows** programs that you can start directly from the menu.
 - To find an application or a file from here, input search terms in the Instant Search field and start search.
3. Taskbar
 - Shows all currently running programs.
4. Language bar
 - Allows you to switch languages while typing.
5. Taskbar icons and clock
 - Allows you to set up Volume, Power Management, Backup and other basic configurations.
6. Return to the Desktop
 - If you place the mouse pointer on this menu, all the open windows become transparent (**Aero Peek**). If you click the menu, all the open windows become minimized to display the desktop.
7. **Windows Gadgets**
 - The right side of the desktop displays mini-applications called **Gadgets**. You can download more **Windows 7** gadgets from the service website.
8. **Recycle Bin**
 - Keeps dropped files and folders. **Empty Recycle Bin** deletes files and folders in **Recycle Bin** from the computer permanently. Deleted files and folders can not be restored.

► Start menu

Includes all programs needed to start **Windows**.

※ Desktop and Start menu may differ by model type and software version.



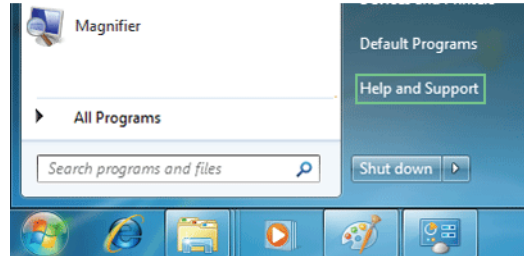
1. Fixed Items
2. Recently Used Programs
 - The order of the programs is subject to change.
3. All Programs
4. Instant Search Field
 - Allows the user to search for a specific application, file, Internet favorite or many others. Type search words and start search to display the results by category.
5. Shortcut
 - Displays folder categories like Document, Picture and Music so that you can access to a specific file or folder directly from the list.

► Help and Support

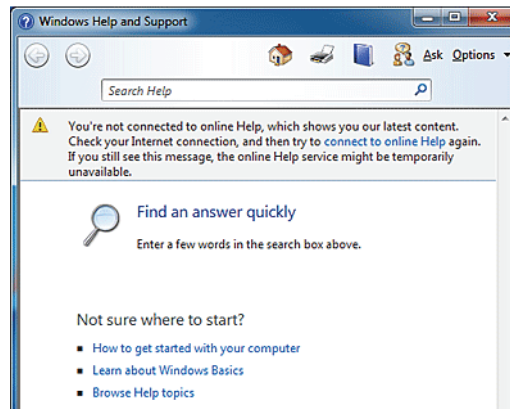
Allows you to learn about **Windows** use and get troubleshooting information and technical supports. Please read the menu before using the computer.



1. Click **Start** button and **Help and Support** on **Start** menu.



2. Follow the instructions on the screen to use **Help and Support**.



- Helps you with many such troubles as learning about the features of **Windows 7** and getting troubleshooting information through appropriate items.
- Fetches information provided by Microsoft.

► Preview Workpane

Windows 7 groups the windows such as **Internet Explorer**, My Computer and Windows Explorer and displays them as a single icon. You can minimize or maximize the windows on the screen conveniently using this menu.

1. Preview Internet Explorer

※ If you place the mouse pointer on the Preview window after clicking the workpane group icon, the