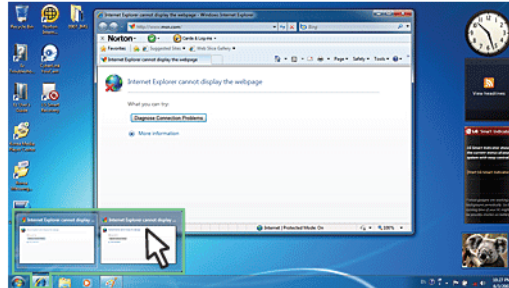
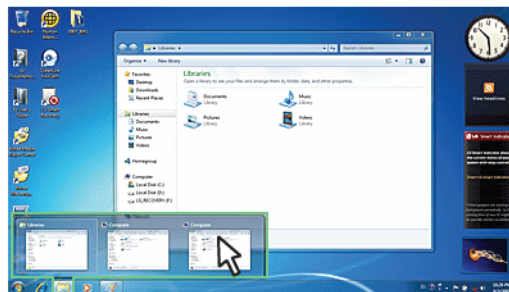


corresponding windows are displayed on the desktop. Click a window in the Preview to open the window.



## 2. Preview My Computer/Windows Explorer



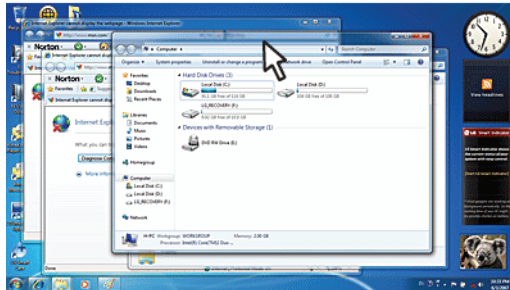
## ► Convenient Features of Windows 7

**Windows 7** is designed to help you use frequently used functions more easily. Utilize the following features to use your system more efficiently.

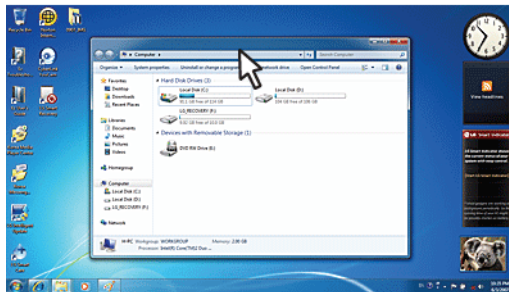
1. **Minimize Unnecessary Windows(Aero Shake):** Click and shake the title bar of the window you want to use to minimize other windows to the task bar.



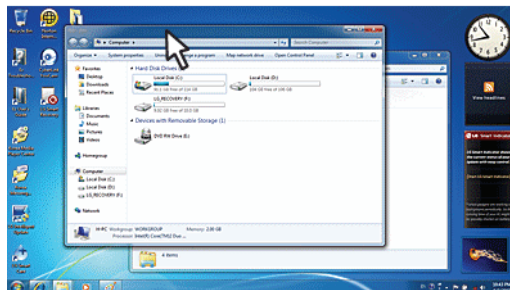
※ If you want to display the windows again, click and shake the title bar of the open window again.



2. **Switch Window Mode Quickly:** Click the title bar of a window and drag it to the top of the screen to maximize it. Click the title bar of a window and drag it to the bottom of the screen to minimize it.



3. **Auto-align Two Windows:** Click the title bar of one of the two windows you want to use and drag it to the rightmost or leftmost side of the screen to make the window occupy one half of the screen.



## ▶ Changing User Account Control Settings

**User Account Control** prevents any unauthorized alteration to system configurations. When someone tries to change settings or install a program that could affect others' system use, **User Account Control** confirms his or her authority first.

We recommend that **User Account Control** not be disabled. If this feature is disabled, enable it immediately to protect the system.

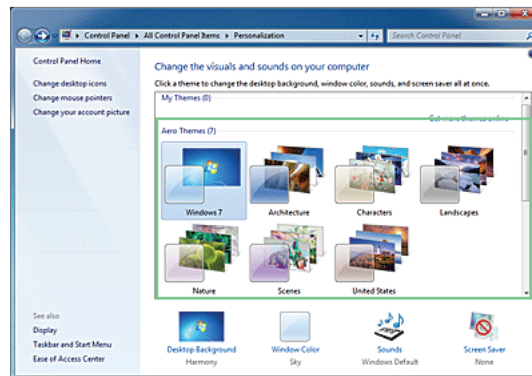
1. Select **Start** > **Control Panel** > **View by** > **Small icons** > **User Accounts** > **Change User Account Control Settings**.
2. After changing User Account Control settings, click **[OK]**.
  - ※ It is recommended to use the default settings for the security and safety of your system.

## ▶ Enable Windows Aero

**Windows Aero** delivers the exquisite visual effects of **Windows 7**. It presents window animations in new transparent and delicate visualization.

※ **Windows Aero** may be enabled by default depending on model type and software version.

1. Right-click the desktop to display a popup window. Then click **[Personalize]**.
2. Once the **[Change Visual Effect and Sound]** screen appears, select the **Aero** theme you want to use.



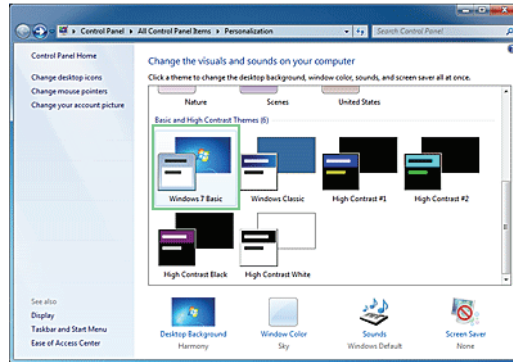
3. The **Aero** theme where the transparency feature is applied becomes enabled.

## ▶ Disable Windows Aero

1. Right-click the desktop to display a popup window. Then click **[Personalize]**.



2. When the Change Visual Effect and Sound window appears, select **[Windows 7 Basic ]** in the **[Basic and High Contrast Theme]** menu,



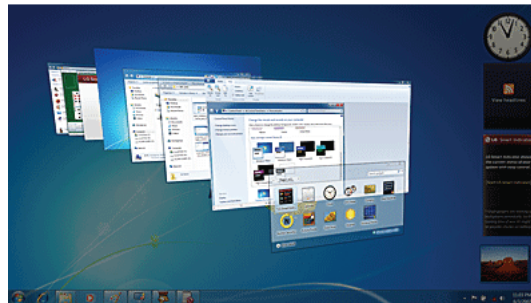
3. The Aero theme is disabled,

### ► Using Windows Flip 3D


**Windows Flip 3D** allows you to view all the open windows on the Desktop on one screen. **Flip 3D** displays all the open windows in 3D, stacked view.

※ To use **Windows Flip 3D**, the **Windows Aero** feature must be enabled.


1. Press the **Windows logo** key ( ) + **Tab** to enable or disable **Flip 3D**.



2. To flip through the open windows, hold down the **Windows logo** ( ) key, and press **Tab** key or simply rotate the mouse wheel. To flip over the windows clockwise or anti-clockwise one by one, hold down the Windows logo key and press the Left or Right arrow key.

- When the intended window is displayed at the top, release the **Windows logo** () key. To display a window without flipping through the stack, hold down the Windows logo key and click the intended window.

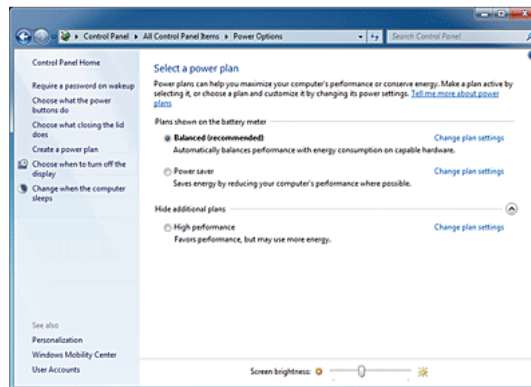


- If you want to display windows in the **Flip 3D** state constantly, press **Ctrl + Windows logo** () + **Tab** keys. In this state, to flip over the windows one by one, press **Tab**. In this state, to flip over the windows clockwise or anti-clockwise one by one, press the **Left/Down** or **Right/Up** arrow key. Press **Enter** to end the Flip 3D state and open the selected window.

## ▶ Windows 7 Power Management

**Windows 7** provides a more simple and reliable power management environment than that of previous **Windows**. With that, you can make Notebook PC consume power more effectively.

- Select **Start > Control Panel > View by > Small icons > Power Options**.
- When the **[Select a power plan]** window appears, select one of the items displayed under **Battery Meter Plans**.
  - ※ If the **High Performance** Settings tab is not displayed, click the down arrow on the right of **[Display More Power Plans]** to display it.



- **Balanced:** Ensures the maximum performance when needed and saves power when the system is not used.
- **Power saver:** Reduces system performance to save power. This plan maximizes battery life.
- **High performance:** Increases system performance and response time to their maximum. In this plan, the battery does not last long.

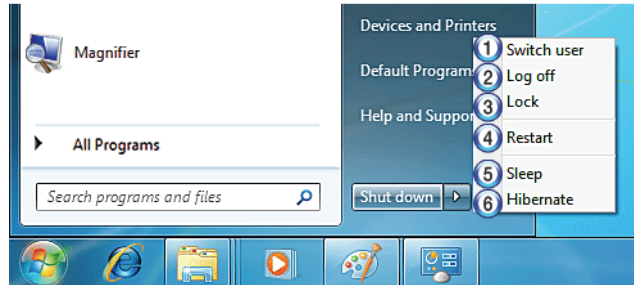
## ▶ System Termination Options

In **Windows 7**, you can use the shortcut menu to log off from user account, lock or restart the system



and switch users fast without logging off.

Click the arrow button on the right of the [Shutdown] button to display more shutdown options.



1. Switch User
  - Logs on using another user account registered in the system.
2. Log Off
  - Exits all programs and logs off from the user account.
3. Lock
  - Locks the user account.
4. Start Again
  - Exits all programs and reboots the system.
5. Sleep
  - Turns off the devices you are not using to minimize the power consumption.
6. Hibernate
  - Stores the user programs and turns off the system.




- The sleep mode reduces the power consumption. If you use the sleep mode, you can go back to your work quickly. It is recommended to save all the data in all open programs before using this mode.

## 3-4. LG Smart Care

**LG Smart Care** is an application that allows you to diagnose and optimize the system conveniently.

- ※ The figures herein are subject to change without prior notice.
- ※ You can download and install **LG Smart Care** using the online update feature of **LG Intelligent Update**.
- ※ **LG Smart Care** may not be available depending on the model.
- ※ "**Diagnostics and Repair**" function of **LG Smart Care** needs network connection or **LG Intelligent Update**.
- ※ Before using **LG Smart Care**, make sure to connect the system to the network or install **LG Intelligent Update**.

### ▶ Using LG Smart Care

1. Double-click the **LG Smart Care**  icon on the Desktop to run the program.
2. **LG Smart Care** Home Page appears as follows.



1. **Windows Button**: Switches to **Windows**.
2. **Setting Button**: Allows you to change the settings of the **LG Smart Care** program.
3. **Exit Button**: Exits the **LG Smart Care** program.
4. **Diagnostics and Repair**: Diagnoses the system and solves the problems diagnosed.
5. **Reinstall Windows**: Restores the system to the restoration point set by **LG Smart Recovery** or **Windows**.
6. **Useful Tools**: Provides various utilities (Internet connection, HDD defragmentor, system cleanup, etc.) that are needed for the system management.
7. **Indicator**: Displays the system preferences (display brightness, sound, power status, firewall, updates, etc.) and allows you to change the settings.
8. **Indicator Environment configuration**: Allows you to edit the indicator components displayed on the screen.
9. **Hide/Show Indicator Button**: Hides or shows the indicator window.



## 3-5. CyberLink YouCam

Cyberlink **YouCam** is the program that can take picture or moving images through the **Web Camera**.

- ※ The figures herein are subject to change without prior notice.
- ※ **Optional Web Camera** is optional, and so it may not be installed in some models.
- ※ For more information about its operations, refer to the Help of **CyberLink YouCam**.


### ► Using Cyberlink YouCam



1. Double-click the **CyberLink YouCam**  Icon on the Desktop to run the program.
2. **CyberLink YouCam** Home Page appears as follows.




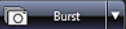
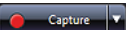

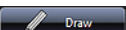





1. **Viewer**: Displays the **Webcam** screen.
2. **Image Gallery**: Use to record pictures and moving images, play back or delete those images.
3. **Animation Effect menu**: Can add a frame and animation effect on the screen.
4. **Frame / Animation Effect menu**: Can add a frame and animation effect on the screen.

### ► Major Buttons

**Snapshot/Burst** and **Capture/Timed Recording** functions can be toggled by pressing  on the right of the corresponding menu icon.

1.  **Import Downloaded Emotion File**: Opens a downloaded emotion file.
2.  **Configure CyberLink YouCam Settings**: Configures the environment for **CyberLink YouCam**.



3.  **Snapshot:** Takes pictures.
4.  **Burst:** Takes pictures continuously.
5.  **Capture:** Records movie clips.
6.  **Timed Recording:** Records a movie clip at the date and time set by the user.
7.  **Draw:** Enables you to edit the pictures using a pen or stamp.
8.  **Upload Movie Clip to YouTube:** Uploads movie clips to **YouTube**.
9.  **Send Media File Using E-mail:** Sends the taken pictures or moving images through E-mail.
10.  **Print:** Prints the selected picture.
11.  **Recycle Bin:** Deletes the selected picture or movie clip.
12.  **Help:** Displays the help window for **CyberLink YouCam**.

## Chapter4.Input/Output Device



## 4-1. Using the Keyboard

The keyboard allows the user to input data or give commands.

※ The keyboard may look different depending on model type.

### ► Keyboard Overview

The keyboard consists of character and numeric keys as well as function keys.



1. Function keys (F1 – F12)
  - The usage may differ by OS or applications types.
2. Pg Up and Pg Dn keys:
  - Moves a screened page up or down.
3. Fn key
  - Works as part of hot keys if used with function keys.
4. Character and Numeric Keys
  - Consists of keys, spacebar, numeric keys (0 – 9), and special symbol keys.
  - **Spacebar**: Inserts a white space per hit while you type.
5. Arrow keys
  - Moves the cursor and others in their respective directions.



## ► Using Special Keys



1. **Esc** key
  - Terminates or stops a program.
2. **Caps Lock** key
  - You can enter capital letters using the keyboard when this key is pressed. To type lowercase letters, press this key again.
3. **Shift** key
  - used to type uppercase letters or as part of hot keys.
4. **Windows** key
  - Allows you to select the **Windows** Start button and open the Start menu.
5. **Shortcut Menu Key**
  - Allows you to open the **Windows** shortcut menus. (The shortcut menus are the same as those you can see when right-clicking a file or folder.)
6. **Enter** key
  - Used to inform the computer of the completion of one command or to change the line.
7. **Prt Sc** key (**Print Screen**)
  - Prints or temporarily saves the current screen display.



### Caution

- Spilling a watery substance like coffee or juice on the keyboard may cause a fault, malfunction, or electric shock.
- The keys may not work properly when you use several keys at the same time while playing a PC game. (Please change the key combination settings according to the combinations necessary for the game play.)

- Toggle **Caps Lock** key to turn the **Caps Lock** lamp ON or OFF. The on/off status is displayed through the lamp on the notebook PC body.
- To change the input mode temporarily, you can press the **Shift** key together with the letter you want to enter. By doing so, you can enter an uppercase letter when the Caps Lock key is not pressed and a lowercase letter when the Caps Lock key is pressed.

**For more convenient use of Windows, remember the following Windows key combinations:**

- Displays **Windows** Help.

- Displays "Search Result" window.

- Displays an input window for program execution.

- Starts Flip 3D if **Windows 7 Aero** is running. Flip 3D is not executed if **Aero** is not running.


- Minimizes the current window.

## ► Hot Keys

By pressing the following key combinations at the same time, you can immediately start the designated features (such as adjusting the screen brightness).

<b>Fn + F1</b>	Customizable hot keys. (Configurable through OSD settings)
<b>Fn + F2</b>	Customizable hot keys. (Configurable through OSD settings)
<b>Fn + F3</b>	Magnifying hot keys



<b>Fn + F4</b>	<b>Windows</b> Executes the mode defined in the <b>Power Save Mode</b> . (Example: Standby Mode, Maximum Power Saving Mode)
<b>Fn + F5</b>	When the user presses <b>Fn + F5</b> keys, the touchpad mode toggles from <b>Touchpad Disable</b> , to <b>Touchpad Auto-Disable</b> (upon connection of external USB mouse), to <b>Touchpad Enable</b> in order. (Initialization takes 1 – 2 seconds. It is recommended to use after the initialization.)
<b>Fn + F6</b>	Turns the wireless devices (incl. Wireless LAN and Bluetooth) on and off ( <b>Optional</b> Bluetooth is optional, and so it may not be installed in some models.) Through hot key settings in the OSD Tray menu, the user can customize <b>[Fn]+[F6]</b> features. Default setting is, for all wireless devices (incl. Wireless LAN and Bluetooth), ON/Off.
<b>Fn + F7</b>	The following screen appears when you press Fn + F7 keys. ( <b>Windows 7 Starter</b> does not support the Monitor Extension mode)  Select the mode you want to use and press [Enter] to switch the monitor.
<b>Fn + F8</b>	Switches between the SRS Off, SRS WOW HD, SRS TruSurround HD modes for each pressing the <b>Fn + F8</b> keys.
<b>Fn + F9</b>	<b>Mute</b> (Sound ON / Sound OFF)
<b>Fn + F10</b>	indicating the embedded numeric keys are available. If you press <b>[Fn] + [Num Lk]</b> again, you can enter text characters.
<b>Fn + F11</b>	Works as [Scroll Lock].
<b>Fn + F12</b>	Hibernate mode (When OSD is installed)
<b>Fn + ▲</b>	Increases LCD brightness, which can have eight different levels.
<b>Fn + ▼</b>	Decreases LCD brightness, which can have eight different levels.
<b>Fn + ◀</b>	Turns down the volume.
<b>Fn + ▶</b>	Turns up the volume.
<b>Fn + PgUp</b>	Works as <b>Home</b> .
<b>Fn + PgDn</b>	Works as <b>End</b> .
<b>Fn + Prt Sc</b>	Works as <b>Pause</b> .



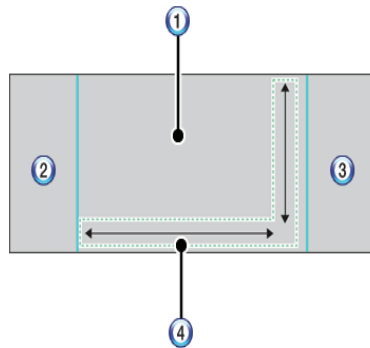
Fn + Delete	Works as <b>Insert</b> .
-------------	--------------------------



## 4-2. Using the Touchpad (and Mouse)

The touch pad is equipped with the scroll feature and can function as a wheel mouse. The touchpad is compatible with the USB-type mouse in software. The touchpad functions same as the USB-type mouse and is very useful for a program supporting mouse use like the **Windows**.

- ※ The touchpad and a USB-type mouse can be used together on the same system.
- ※ The touchpad scroll function is not supported in the model that supports the gesture function.



1. Touchpad
  - Moves the cursor.
2. Left button
  - Used to select or execute programs.
3. Right button
  - Functions as the right button of a mouse in most cases. However, the usage may differ depending on programs.
4. Scrolling area



## ► Moving the Cursor (Pointer) on the Screen

Place a finger on the touchpad and glide the finger.



## ► Click (Select)

Press and release the left button swiftly. (Or tap the touchpad once.)

Do this, for example, to select a menu or icon and to place the cursor to type on a word processor file.

## ► Double-click (Execute)

Press and release the left button twice swiftly in a series. (Or tap the touchpad twice.)

Do this, for example, to run a program after selecting its execution file (or icon).



Caution

### Notes on Using the Touchpad

- Do not use a sharp object such as a pen on the pad nor peel the cover. It may cause an impairment.
- Do not place more than one finger, and do not use while wearing a glove or when the hand is wet. The Touchpad will not work properly. Oil or dirt at the finger tip can also cause an impairment.
- The touchpad is sensitive. Do not give excessive load or maintain an uncomfortable position. Otherwise, a finger or wrist injury may be resulted in.



## ► Drag & Drop

To drag, click and hold an icon, for example, and move it to another location.

To drop, release the dragged icon in the location you want.

To move a file icon, for example, to another folder or to **Recycle Bin**, place the cursor (or the pointer) on the icon, press and hold the left button, and glide another finger on the touchpad until the icon reaches the aimed location. After reaching the destination, release the left button.

### 1. Drag

- Glide one finger on the pad with another finger pressing and holding the left button.

### 2. Drop

- Release the left button to drop. (By doing this, you could drop a file into **Recycle Bin**, if you want to.)

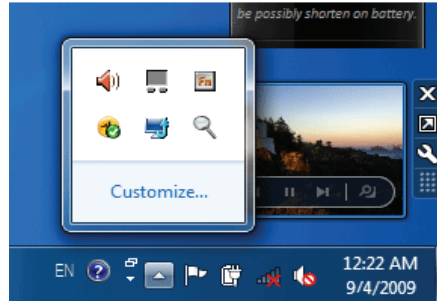


## ► Click-free Dragging

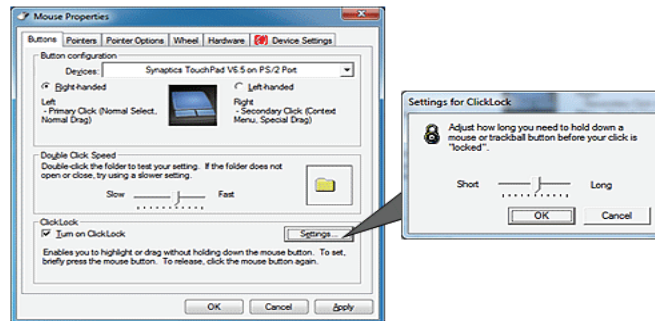
When activated, this feature allows you to drag an icon without pressing and holding the left button.

Do the following to activate the click-free dragging feature. If it has been done, pressing the left button for an extensive time replaces pressing and constant holding so that you can drag without holding the left button.

1. Click [Mouse Properties] icon in Notification Area,



2. Select Activate click-free dragging (T) and click [Setup] button to adjust the time span for which you should press the left button to execute the feature,



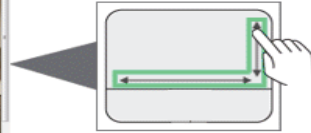
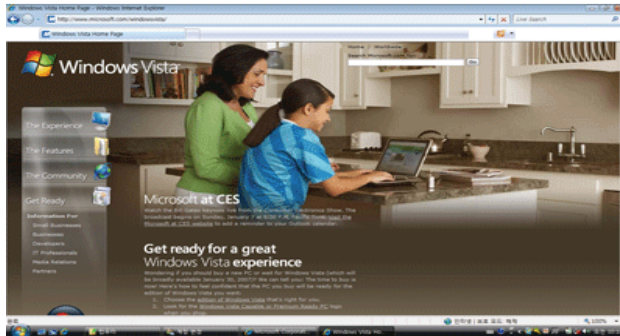
## ► Scrolling

The touch pad supports the scrolling feature.

To scroll vertically or horizontally, glide your finger along the right or bottom edge. Now the screen follows your finger movements if there is a scroll bar on either edge.



※ Scroll area may differ by model type.



## 4-3. Using Touchpad Gesture

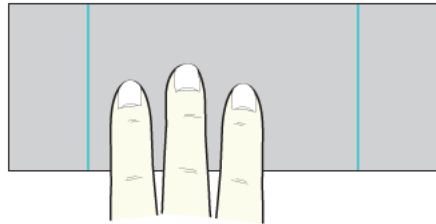
The touchpad gesture function allows you to use Windows programs more easily by utilizing different touching methods.

- ※ The touchpad gesture function may not work in some applications that are not provided by Windows.
- ※ The touchpad gesture function may not work in some models.

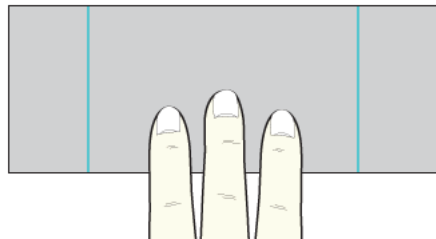
### ▶ Using Image Slide Show/ Internet Explorer

Select Start > My Computer and open the image file saved in the notebook PC or USB memory.

1. **Go to Next/Previous Image:** Place three fingers on the touchpad and move to the left or right to go to the previous or next image respectively. (In **Internet Explorer**, the previous or next page is displayed respectively).

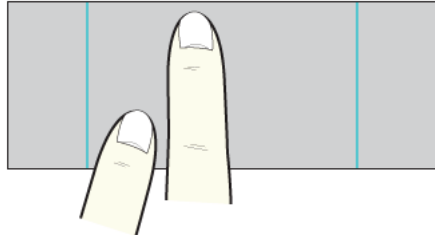


2. **Switch to Full Screen:** Place three fingers on the touchpad and move to the top or down to maximize the slide window or return to its original size respectively.

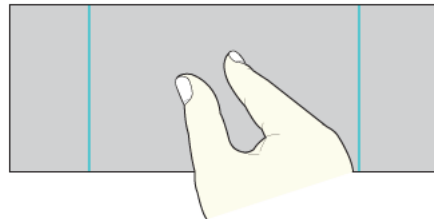




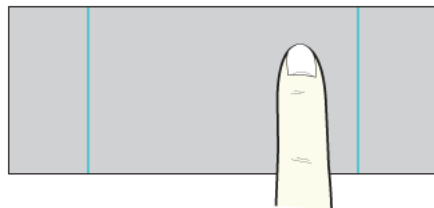
3. **Rotate Image:** Place the thumb on the bottom right of the touchpad and move another finger in a spiral pattern on the touchpad to rotate the slide.



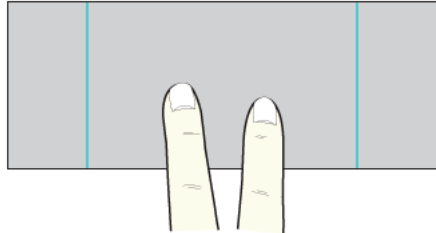
4. **Zoom an Image:** Place the thumb and index finger on the touchpad and increase or decrease the distance between the fingers to enlarge or reduce the image respectively, as shown in the figure.



5. **Scroll Using One Finger:** Place the index finger on the top right of the touchpad and move to the left or right in a circular pattern to scroll the screen down or up respectively.



6. **Scroll Using Two Fingers:** Place two fingers on the touchpad and move up/down/left/right to scroll the screen.



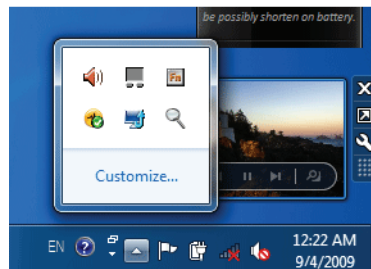
### ► Setting Touchpad Functions

You can change the touchpad functions or enable/disable the gesture function.

※ The figures herein may differ by language selection and be subject to change without prior notice.

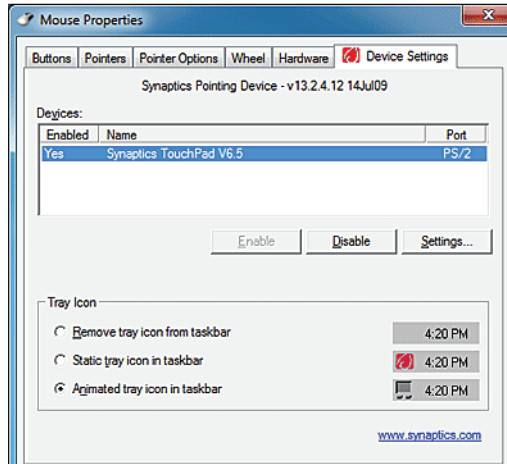
1. Click **[Mouse Properties]** icon in Notification Area.

※ If you cannot find the Mouse Properties icon in Notification Area, Select **Start > Control Panel > View by > Small icons > Mouse** menu.

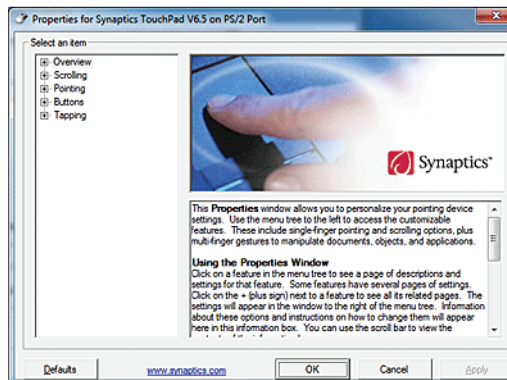




2. When the following screen appears, select the **[Device Settings]** tab and click **[Settings...]**.



3. When the following screen appears, change the settings as required and click **[OK]**.







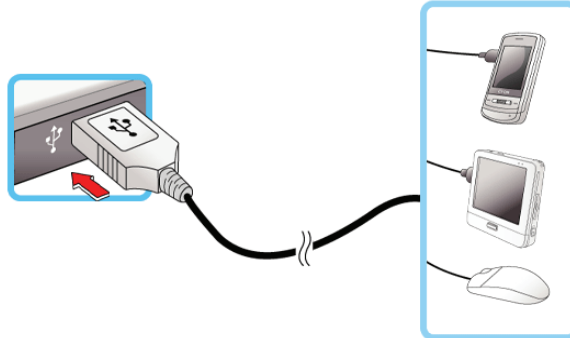
## Chapter 5. Connecting Peripherals



## 5-1. Connecting USB 2.0

Following peripherals can be connected to the Notebook PC.

※ Those peripherals need to be purchased separately.



The notebook PC can be connected with other USB supporting devices such as USB keyboard, Hub, digital camera, etc.



## 5-2. Connecting Monitor



Monitor Toggle Features (Converting the Screen Using the Shortcut Key)

※ If you have an external monitor connected to the computer, press the Fn + F7 keys to rotate the display mode between LCD only, Monitor only, and LCD + Monitor both in order.



- Ensure the monitor power is off before connect external monitor to the notebook pc.

## 5-3. Using IVT BlueSoleil

IVT **BlueSoleil** is a **Windows**-based IVT software which establishes wireless connection between **Bluetooth**-enabled desktop or notebook PC and other **Bluetooth**-enabled devices. **IVT BlueSoleil** allows the user to access various Bluetooth-enabled digital devices such as camera, cell phone, headset, printer, GPS receiver, etc. It can also establish network and exchange data with other **Bluetooth**-enabled computer or PDA.

- ※ **Optional Bluetooth** is optional, and so it may not be installed in some models.
- ※ The figures herein may differ by language selection and be subject to change without prior notice.
- ※ For more details about how to use **Bluesoleil**, refer to the corresponding help.

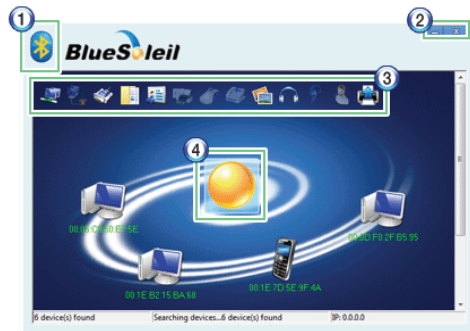
### ► BlueSoleil

1. Double-click the icon on the right bottom of the taskbar.



2. **BlueSoleil** screen appears.

- ※ If Bluetooth is turned on, it searches the Bluetooth devices in the area and displays them on the screen.
- ※ If a Bluetooth device is not displayed on the screen, press **[F5]** or **[Fn]+[F6]** to see if **Bluetooth** is turned on.



1. **BlueSoleil** Menu Button: Provides menus such as Find Device, Sorting Criteria, My Device and Help.



2. Minimize/Exit Button: Minimizes the **Bluesoleil** window or exits the program.
3. Available Services: Displays the list of services available for a **Bluetooth** device.
4. **Bluetooth** Device Status: Displays the **Bluetooth** device information and their status for the current notebook PC.



## Chapter 6. System Setup





## 6-1. Starting System Setup

System setup means storing the hardware configuration information of the computer in the **CMOS RAM**. Through system setup, the computer retrieves various information including current date and time, memory capacity, and hard disk capacity and type.

You setup the system when you set passwords, change the booting order, and add new peripheral devices to the machine.

※ Items displayed on the Setup screen may differ by model type and spec.

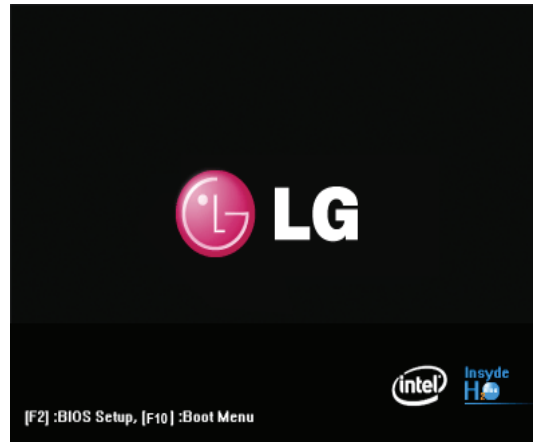
- Refer to [Setting the Password].
- Refer to [Changing or Deleting the Password].
- Refer to [Restore the Default Settings].



Caution

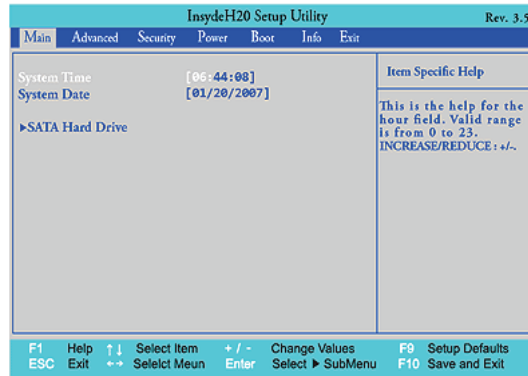
- Do not change the system setup unless necessary. Incorrect system setup may cause errors during system operation. Take caution when changing the system setup.
- For performance improvement, CMOS setup menu configuration and the initial setup status may be changed and may become different from images included in the user manual.

1. Turn on the notebook PC.
2. Press **[F2]** while "**[F2]: BIOS Setup, [F12]: Boot Menu**" appears on the bottom of the LG logo screen.






3. A while later, the system setup home screen appears,



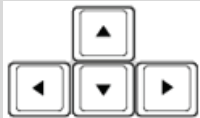
### ► Keys Used in System Setup

Keys	Function
<b>Enter</b>	Selects the current item.
<b>Esc</b>	To deselect the current item or to move to the previous screen.
<b>▲, ▼, ◀, ▶</b> (Arrow keys)	Moves the cursor up, down, left, and right.
<b>+, -</b>	Increases or decreases the item value.
<b>F9</b>	Recovers the default system settings.
<b>F10</b>	Stores new contents or ends the system setup.



**Cursor Keypad**

- These keys are used to move the cursors up, down, right, and left.



## 6-2. Setting the Password

This process is to set a password so that other people cannot use the notebook PC or change the settings.

The user can set a password while booting the system or setting up the system.



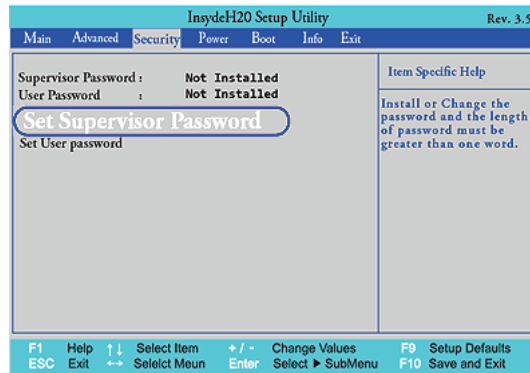
Caution

- Without the registered password, if any, access to the system will be denied. Write down and keep the password in a safe place.

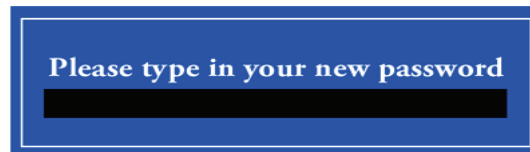
### ► Set Supervisor Password

The password prevents unauthorized people from accessing the notebook PC. By default, no password is set for the machine. If an unauthorized person changes the password in the CMOS Setup, you will be unable to access the system.

- After opening the system setup screen, use the arrow keys to move to **[Security]**.
- When the following screen appears, select **[Set Supervisor Password]** with the arrow keys and press **[Enter]**.



- When the following message appears, input the password and press **[Enter]**. The password must not exceed 8 characters of letter (A - Z), number (0 - 9) or their combination.





4. When the following message appears, press **[Enter]**.

**Changes have been saved  
Press ENTER to continue**

5. To save the changes in system setup, press **[F10]**.
6. When the following message appears, select **[Yes]** and press **[Enter]**. The notebook PC will restart.

**Exit Saving Changes?**

**[Yes] [No]**



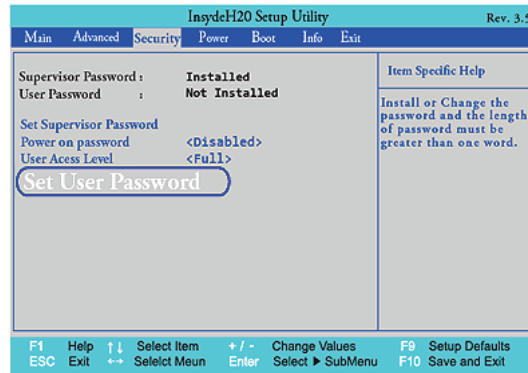
- With **Supervisor Password**, the user will be authorized to set all items in the **CMOS** setup menu. In case other people also use the notebook PC, it is recommended to set the **User Password**.

### ► **Set User Password**

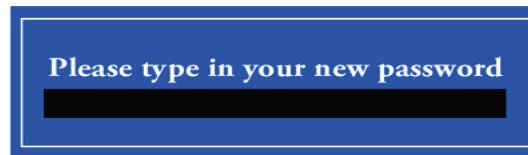
The password set by the **Set User Password** process is lower than that set by the **Set Supervisor Password** process, and so the user can use the **Set User Password** only after setting a password in the **Set Supervisor Password** menu.

1. After opening the system setup screen, use the arrow keys to move to **Security** .

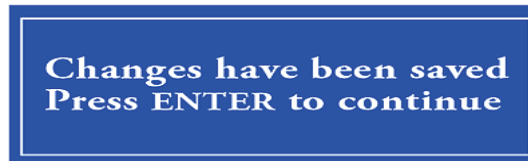
- When the following screen appears, select **Set User Password** with the arrow keys and press **[Enter]**.



- When the following message appears, input the password and press **[Enter]**. The password must not exceed 8 characters of letter (A – Z), number (0 – 9) or their combination.



- When the following message appears, press **[Enter]**.




- To save the changes in system setup, press **[F10]**.



6. When the following message appears, select **[Yes]** and press **[Enter]**. The notebook PC will restart.

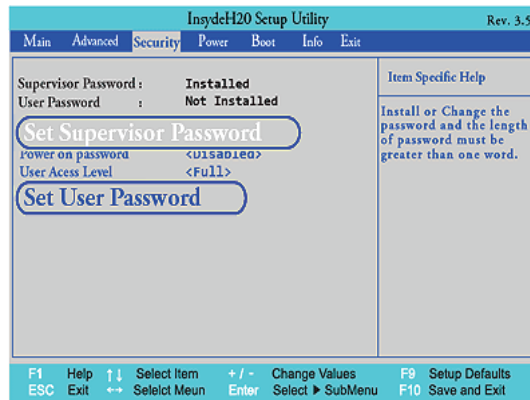


 ■ **UserPassword** allows limited access to the items in **CMOS** setup compared to the **Supervisor Password** item.

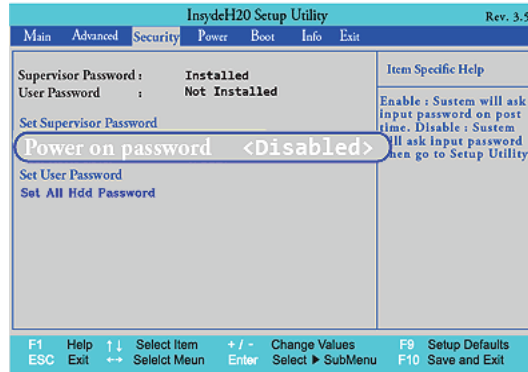
### ► Power on Password


**Power on password** feature protects the system by requesting **Set Supervisor Password** or **Set User Password** during boot up.

1. After opening the system setup screen, use the arrow keys to move to **Security**.
2. When the following screen appears, set **Set Supervisor Password** only or both **Set Supervisor Password** and **Set User Password**.



3. Select **Power on password**, and change **Disable** into **Enable** using + and - keys.

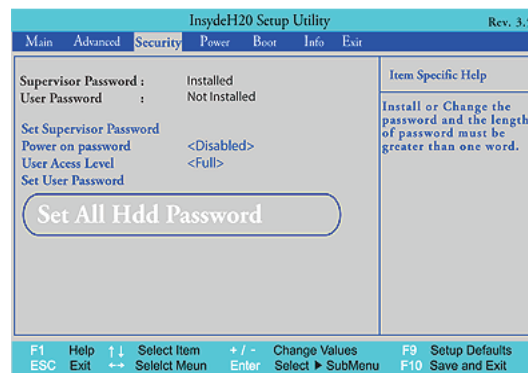



 ■ If the user presses both **[Shift]** and **[+]**, he/she can select between **[Enabled]** and **[Disabled]**.

### ► Set All Hdd Password

**Set All Hdd Password** is to set a password in the **HDD** separately from the **Supervisor Password**.

1. After opening the system setup screen, use the arrow keys to move to Security.
2. When the following screen appears, select **Set All Hdd Password** with the arrow keys and press **[Enter]**.

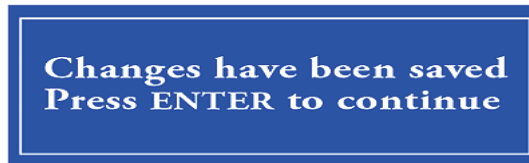




- When the following message appears, input the password and press **[Enter]**. The password must not exceed 8 characters of letter (A – Z), number (0 – 9) or their combination.



- When the following message appears, press **[Enter]**.



- To save the changes in system setup, press **[F10]**.
- When the following message appears, select **[Yes]** and press **[Enter]**. The notebook PC will restart.



	<p><b>Without the HDD password, it is impossible to recover the HDD.</b></p> <ul style="list-style-type: none"><li>■ The replacement of the HDD due to missing of the HDD Password is not covered by the warranty.</li></ul>
--	--



## 6-3. Changing or Deleting the Password

You can delete or change the password only after inputting the current password.

### ▶ Changing the Password

1. Execute the System Setup, enter the password, and press **[Enter]**.




2. Change the password in the same way as setting one.

### ▶ Deleting the Password

1. Execute the System Setup, enter the password, and press **[Enter]**.



2. After opening the system setup screen, use the arrow keys to move to **Security**.
3. Select a password to change, press **[Enter]**, and enter the current password.

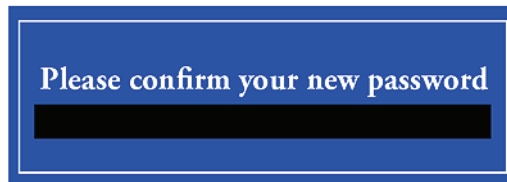




4. When the following screen appears, press **[Enter]**.



5. When the following screen appears, press **[Enter]**.



6. When the following screen appears, check the settings and press **[Enter]**.



7. To save the changes in system setup, press **[F10]**.
8. When the following message appears, select **[Yes]** and press **[Enter]**. The notebook PC will restart.

