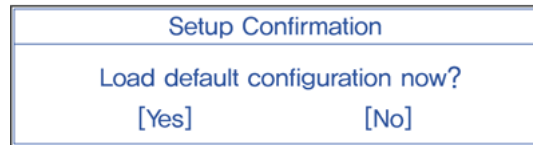


6-4. Restore the Default Settings

If you have changed the system setup by mistake, you can restore the default settings.

1. After opening the system setup screen, use the arrow keys to move to **Exit**.
2. Use the arrow keys to select **Load Optimal Defaults**, and press [Enter].
3. When the following message appears, select **[Yes]** and press **[Enter]**. The settings will be reset to their original defaults,



4. To save the changes in system setup, press **[F10]**.
5. When the following message appears, select **[Yes]** and press **[Enter]**. The notebook PC will restart,



- You may also press **[F9]** to use **Load Setup Defaults**.

Chapter7.Using LG Smart Recovery

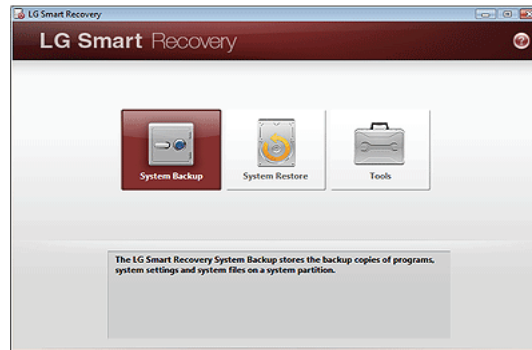


7-1. LG Smart Recovery System Backup

LG Smart Recovery helps you safely install and recover **Windows 7**.

※ The figures herein may differ by language selection and be subject to change without prior notice.

1. Double-click the **LG Smart Recovery** icon to run **LG Smart Recovery**.
2. Click the **System Backup** icon.



3. When the following screen appears, select the location to back up.
 - ※ If you choose one among **DVD, CD, HD DVD, Blu-ray Disc**, a Media Disc for the restoration purpose will be generated, and you can restore system only by rebooting it with the Media Disc.
 - ※ The backup locations may vary depending on product specifications.



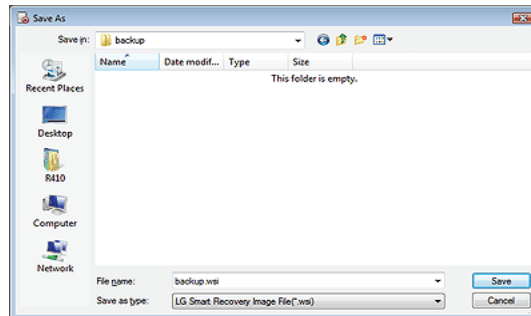
4. Choose **Full Backup** or **Incremental Backup** and click **Browse** button.
 - ※ You can select **Incremental Backup** only when you have previously run **Full Backup** and the system has



complete backup data.



5. Specify the location to save the backup file, type file name and click **Save** button.
※ If you have selected Incremental Backup, choose the existing Full backup data and click **Open**.

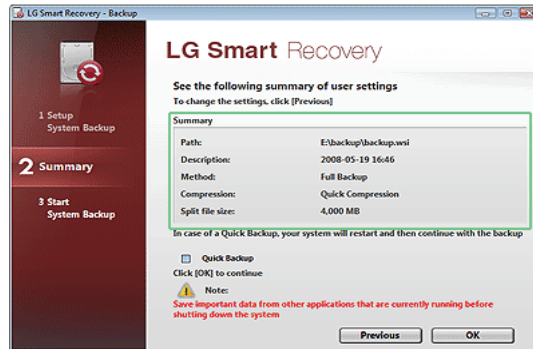


6. Once you complete the process to set the Full Backup location, click **Next**.



7. Check the system backup preferences you have selected and click **OK** button.

※ Quick Backup reduces time required to backup the system,



8. The screen showing the progress of system backup appears.

※ Depending on product specifications and backup file size, the system may need longer time to load the file. Do not turn off the power forcibly or reboots the system while it is loading the file,



9. After the system backup is complete, click **OK** to finish the process,





7-2. LG Smart Recovery System Restoration

You can restore the system by using the **LG Smart Recovery** backup data.

※ The figures and instructions herein are subject to change without prior notice.

1. Double-click the **LG Smart Recovery** icon to run **LG Smart Recovery**.

※ When **Windows 7** does not operate normally, restart the computer. When "**PRESS F11 TO RUN LG RECOVERY.**," appears on the screen during the booting process, press **F11** to start **LG Smart Recovery**.

※ Backup important data by using Tools menu before starting the System Restore process.

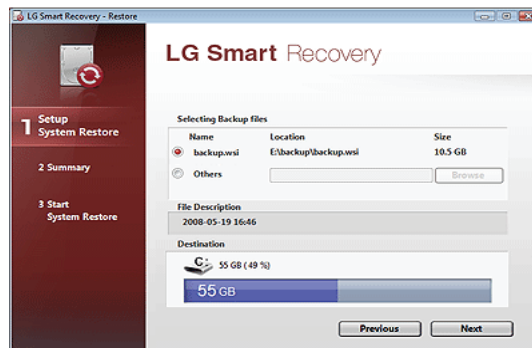
2. Click the **System Restoration** button.



3. The System Restore Settings screen will appear.



4. Click the Protected Hard Disk Area or **Browse** to select a file you want to back up and click **Next**.
- ※ The Protected Hard Disk Area option will be presented only if you have selected the **Safe Backup** when you run the **LG Smart Recovery** for the first time.
 - ※ If you select the Protected Hard Disk Area, the system will be restored to the initial status when you have bought it.



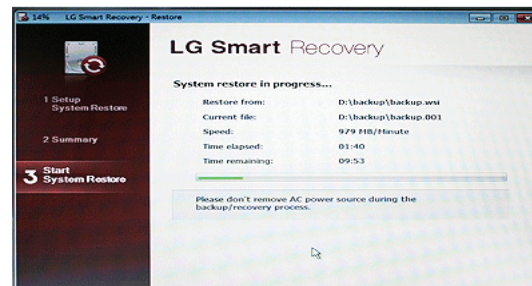


5. Confirm the restoration settings and click **OK**. The Restoration In Process message will appear.



6. Click **OK**. The system will automatically restart in 1 minute and show the System Backup In Process screen.

※ Depending on product specifications and backup file size, the system may need longer time to load the file. Do not turn off the power forcibly or reboots the system while it is loading the file,



7. Once the system restoration process completes, click **OK** and the system will automatically restart in 10 seconds.





7-3. LG Smart Recovery Tools Menu

LG **Smart Recovery** Tools menu provide useful tools to back up and restore the system efficiently.

※ The figures and instructions herein are subject to change without prior notice.



1. **Disk Management:** By using the Disk Management tool, you can perform disk-related tasks including creating partition and volume, formatting, and assigning drive letter.
2. **Explorer:** This tool shows drive disks and other hardware connected to the computer.
※ By using the Explorer, you can back up user data before proceeding the system restore.
3. **Delete Disk:** You can delete rewritable disks.



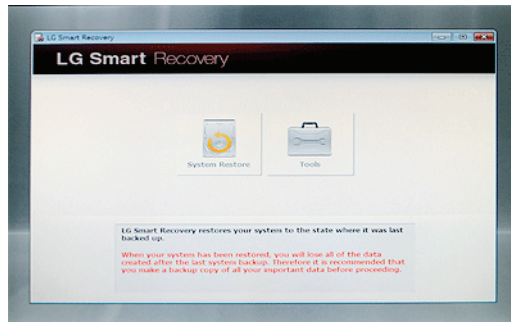
Chapter 8. Using LG Smart Recovery Center



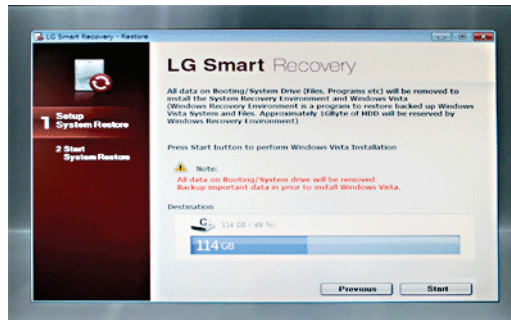
8-1. LG Smart Recovery Center

※ **LG Smart Recovery Center DVD** may not be available depending on the model.
When **LG Smart Recovery** fails to restore the system, you can reinstall **Windows 7** by using the **LG Smart Recovery Center**.

1. Insert the **LG Smart Recovery Center DVD** into the **DVD-ROM** and restart the system.
 - ※ If the **LG Smart Recovery Center DVD** fails to boot the system, restart the computer and press **F2** to start the **BIOS SETUP** and change the Booting Order option.
2. When the booting completes, the System Restore screen will appear.
3. Click the **System Restoration** button.
 - ※ Backup important data by using Tools menu before starting the System Restoration process.



4. Click **Start** button.





5. When prompted to confirm to start the System Restoration, click OK.



6. When it completes the restoration process, the system will present the Completed the Restoration message.



7. Click **OK** to restart the system automatically after 10 seconds.
※ Remove the **LG Smart Recovery Center DVD** from the **DVD-ROM** once the System Restoration process completes.



Chapter9.Reinstalling the Driver



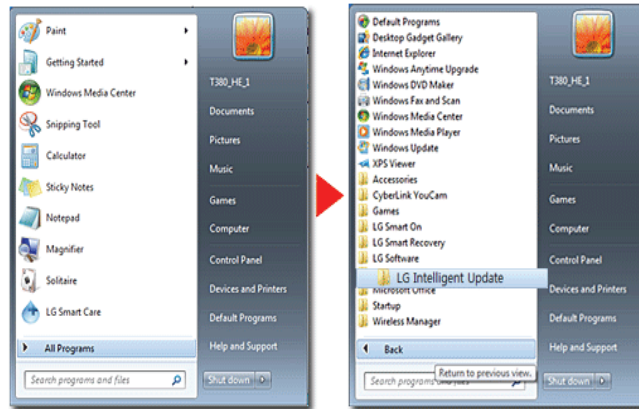
9-1. Reinstalling the Driver

※ The figures herein may differ by language selection and be subject to change without prior notice.

▶ Reinstalling the Driver Using LG Intelligent Update

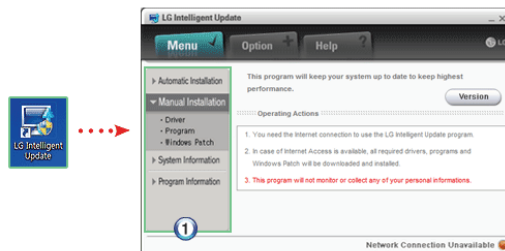
1. Select **Start** > **All Programs** > **LG Software** > **LG Intelligent Update** to continue.

※ You can also double-click the **LG Intelligent Update** icon to run the program.



2. Select **[Automatic Installation]** or **[Manual Installation]** to reinstall the driver.

※ For more details, refer to Help.



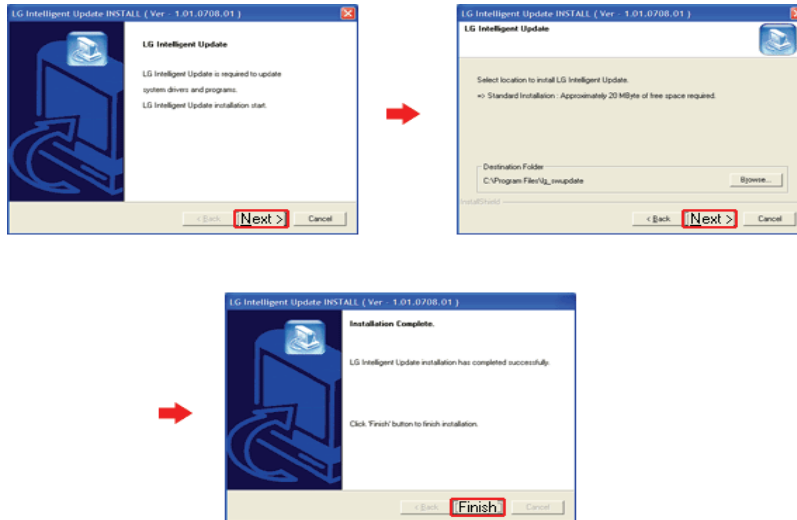
1. Now, you can install drivers and applications needed for the system.



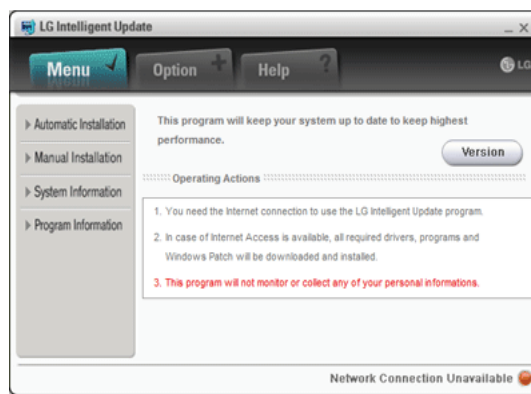
▶ Installing LG Intelligent Update

※ **LG Intelligent Update** comes preinstalled in your system. You can also download the application from the Internet.

1. Go to "www.lge.com", download **LG Intelligent Update** and install the program.
2. When the installation screen appears, click **Next > Next > Finish** or press **Enter** to install the program.



3. **LG Intelligent Update** screen appears.





Chapter 10. Using the Internet



10-1. Using the Internet

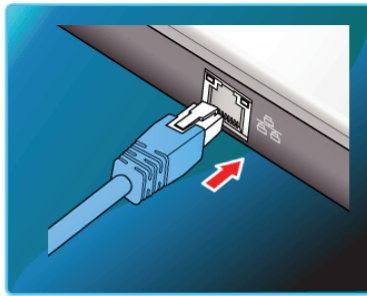
There are various methods to access the Internet. Choose the most desirable method for user environments and system specifications.

※ Items displayed during the process may differ by model type and spec.

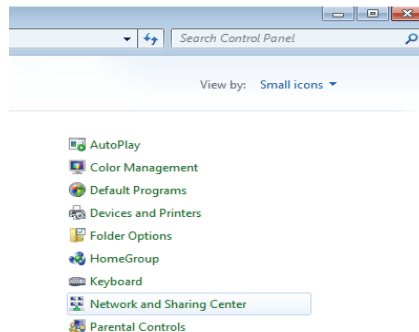
▶ Using LAN

LAN refers to high speed network environments linking companies and households.

1. Connect LAN cable to the LAN port.

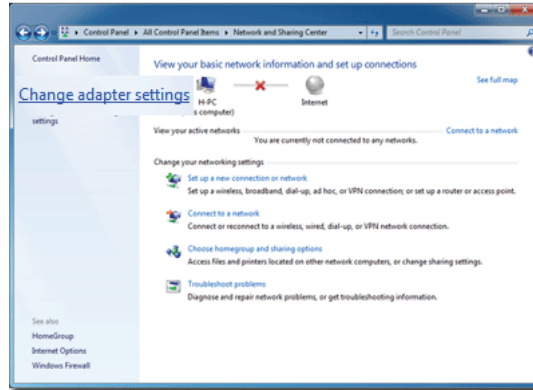


2. Select **Start** > **Control Panel** > **View by** > **Small icons** > **Network and Sharing Center**.

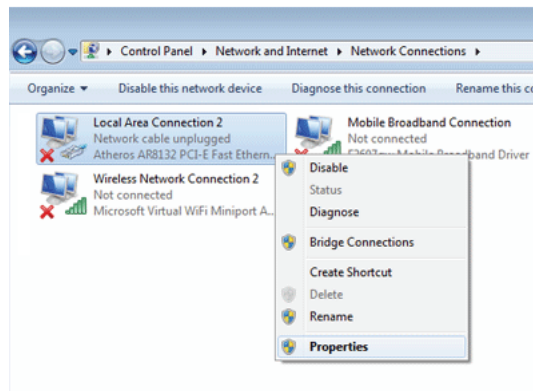




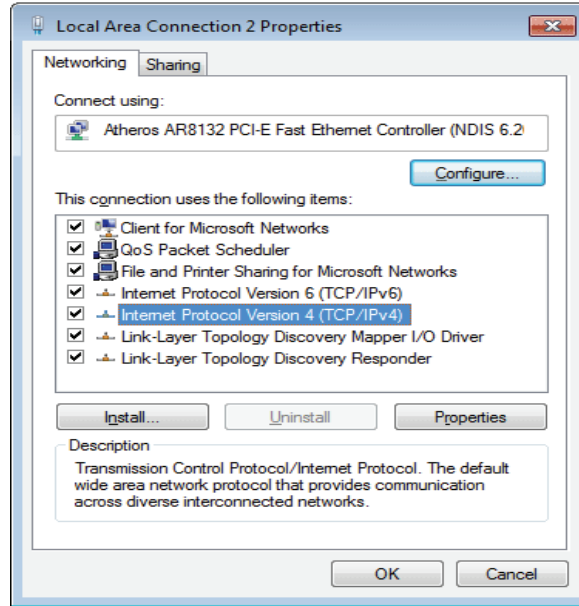
3. Click **Change Adapter Settings**.



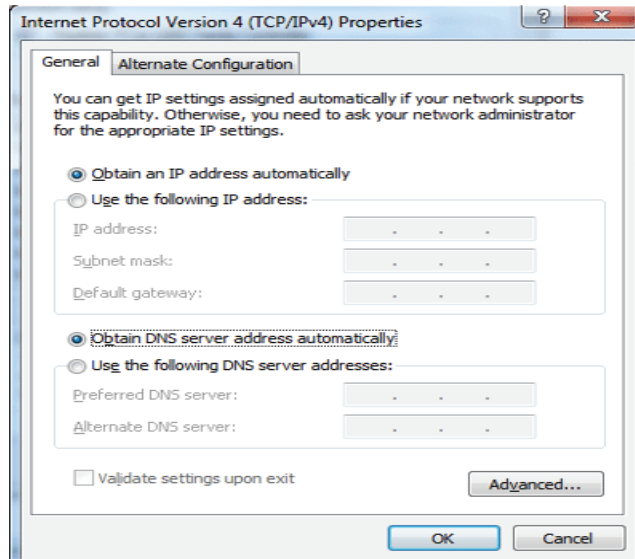
4. Right-click **Local Area Connections** and select **Properties**.



5. Select **Internet Protocol Version 4 (TCP/IPv4)** and click **Properties**.



6. On the **General** tab, select **Obtain an IP address automatically**.





7. Click the **OK** button when the Internet Protocol (**TCP/IP**) properties are set.

▶ Using Wireless LAN


- ※ **Optional** The Wireless LAN card is optional, and so it may not be installed in some models.


Wireless LAN supports multi-terminal networking at home and office.

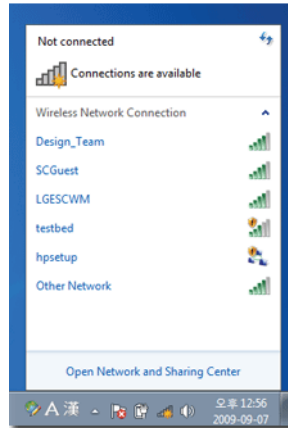
Wireless network offers general network features (e.g. sharing files, folders, and a printer) and allows a computer without the Internet connection in a small network to access the Internet through another terminal.

- ※ By default, this computer is set for wireless network on the **Windows**.

▶ Setting Wireless LAN Environment

1. Click the  button to display the available wireless network list.
 - ※ When the wireless network list is not displayed, check if the wireless network device is turned on. Then click

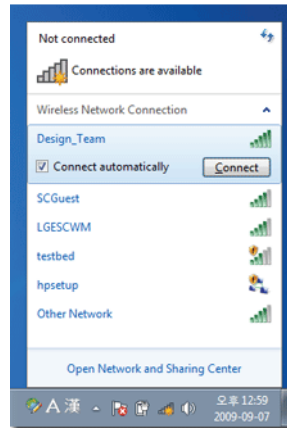
the  button to search for the wireless network again,



2. Select the **Access Point** (wireless network) you want to use and click **[Connect]** to connect to the **Access Point**.



※ If a password is set for the wireless network, the Enter Password window appears.



3. Click the  button to see if the **Access Point** is connected to the network,



Caution

- Ensure the network is secured to share the computer and be careful not to share confidential data.



Chapter 11. Secondary Storage Device and Mem-





ory



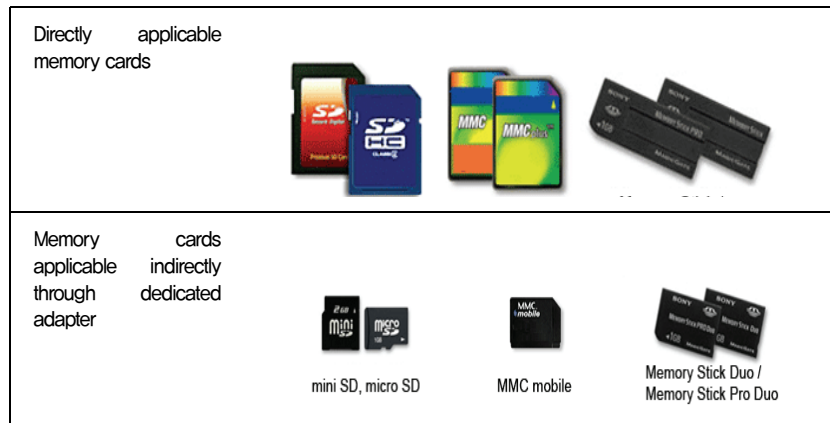
11-1. Using the Memory Card

▶ Checking Available Memory Card

※ This model supports SD, MMC, Memory Stick, and Memory Stick Pro.

SD, MMC, Memory Stick, Memory Stick Pro cards are mobile storage devices like a floppy disk, widely used in many digital products these days.

To use **Memory Stick Duo, Memory Stick Pro Duo, mini SD, micro SD** and **MMC mobile** cards, mount it on the dedicated adapter and insert the adapter into the multi-card slot.

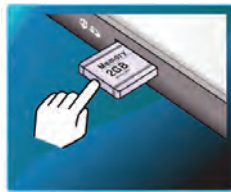


(The available memory type and capacity may differ by the computer model type.)

※ Check availability before buying a memory card.

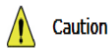
▶ Mounting and Using Memory Card

Insert the card into the multi-card slot to the fullest in the right direction.





- When the memory card is formatted, the data stored in the memory card will be deleted. Check whether there are important data before formatting the memory stick.
- To format a memory card, right-click the memory card drive and select Format. When Format window appears, click Start to continue.
- The format feature may not be available on those **Windows** whose version is lower than **Windows Vista**. Format the card on other digital devices or format it after installing Memory Stick Formatter.
- If the writing prevention tab of memory card is locked, the user cannot format the memory stick nor write or delete the data.
- **SD, MMC** memory cards can be used only as storage devices and do not support the copyright protection function.



Caution

When using an MMC card:

- Place the **MMC** card with the arrow facing upward (▲), and insert it into the slot. Forcing the **MMC** card into the slot may cause an impairment.



- Some memory products manufactured by **Transcend** are made of metal and may cause a short circuit when contacting with the connection port in the multi-card slot. Avoid using metallic-surfaced memory products. They could offset the system performance.

When using a memory card through dedicated adapter:

- Use the dedicated adapter. Otherwise a short-circuit may occur, causing damage to the computer and the memory card.

▶ Removing memory card

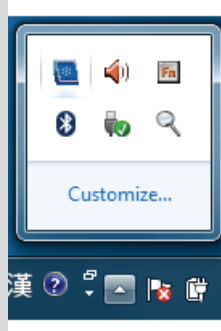
Push the card as depicted in the following picture to make the card spring out of the slot. Pull the card out in the direction of the arrow.





To safely removing a memory card:

1. Click **Safely Remove Hardware** icon on the taskbar.



2. Click **Safely Remove Hardware (S)**.
3. When **Safety Remove Hardware** window appears, click **Stop**.
4. When **Stop Hardware** window appears, click **OK**.

11-2. Expanding Memory Capacity


You may need to expand the notebook memory for better performance.

※ For memory expansion, we recommend that you receive a paid service from a service center certified by LG. LG disclaims any responsibility for damage resulting from uncertified service or arbitrary disassembly.


► About Memory

This system uses a 200-pin, SO-DIMM (Small Outline Dual In-Line Memory Module)-type **DDR2 SDRAM**.


※ The models that have two 1 GB(1024 MB) memories cannot be upgraded later.



- When expanding the memory, add a memory with the same specification (**DDR2 SDRAM** for 1.8 V). (Subject to change depending on model type)
- The **DDR2** memory provides greatly improved transmission rate than existing memories, and is differently shaped.



DDR2 SDRAM



Caution

To upgrade the machine, turn off the system and disconnect the power cord and the battery.

- Disconnect the telephone line linked to the modem, if any. An electric shock or fire may occur.

Supported Memory

- **PC2-6400S(800 MHz) 1 GB(1024 MB) DDR2 SDRAM SO-DIMM**

※ When you expand your memory capacity, make sure to use the memory from the same company.

► Preparing Memory

Before purchasing memory, study the specifications and features of the current memory.

1. Rated Capacity: **PC2-6400S(800 MHz) DDR2 SDRAM SO-DIMM**
2. Speed: **800 MHz (400 MHz x 2)**
3. Type: **1 GB(1024 MB)**



▶ Expanding Memory Capacity

※ Main board configuration, memory socket and memory type may differ by model.

1. Loosen the two screws at the bottom of the notebook PC to remove the cover.



2. Insert the expansion memory to the memory socket as indicated by the arrow.



3. Push the memory in the direction of the arrow until you hear a "click" sound.



4. After inserting the memory, fasten the cover with the screws.



5. If an error message related to the main memory capacity is displayed during booting after the memory is expanded, press **F2** key and save the settings.



- Before remove the PC cover, turn off the AC power, and remove the battery and all peripherals. Then, disconnect the cable.
- Push till the memory is completely fixed in the lock.
- Check the memory capacity during the second booting. If the memory capacity is not correct, install the main memory again.



Caution

- Use only the expandable main memory module manufactured by LG. Using a main memory module other than recommended products may cause malfunctioning of the notebook PC.



Chapter12.Appendix



12-1. Specifications

▶ Available Processors

Intel Atom Processor (L2 Cache Size: 512 KB) is supported.

※ The user must not replace or expand the CPU capacity arbitrarily. The CPU capacity differs depends on model type.

▶ Main Memory

One 1 GB(1024 MB) memory or two 1 GB(1024 MB) memories are provided as main memory. The notebook PC has two memory slots.

※ The models that have two 1 GB(1024 MB) memories cannot be upgraded later.

※ Memory types and specifications may differ depending on the model.

▶ Secondary Storage Devices

6.35 cm(2.5 inches) Hard Disk Drive(SATA)

※ The hard disk capacity and the type depend on the notebook PC model.

External Optical Disk Drive

※ **Optional** It may not be provided depending on the model. Its specifications also differ depending on the model.

▶ LCD

25.6 cm(10.1 inches) WSVGA LED (1024 x 600) TFT Color LCD

25.6 cm(10.1 inches) HD LED (1366 x 768) TFT Color LCD

※ Some models are equipped with Glare Type LCD. This model is enhanced the sharpness compare to the other types of LCD. So, it may appears glaring a lot but this is the normal status.

※ The size and the resolution rate of the LCD depend on the notebook PC model.

▶ Bluetooth

Broadcom BCM92070MD_REF

Bluetooth 2.1 + EDR

※ **Optional** Bluetooth is optional, and so it may not be installed in some models.

▶ Web Camera

1.3 Mega Pixel Web Camera module

0.3 Mega Pixel Web Camera module

※ The web camera module is optional and may not be provided in some models. Also, its specifications may differ depending on the model.



▶ External I/O Interface

External VGA Monitor Port: 1

Microphone: 1

Microphone Input Port: 1

Headset Output Port: 1

USB 2.0 Ports: 3

Multi-card Slot: 1

RJ 45 (LAN) Port: 1 (Gender)

▶ Video

Mobile Intel Graphic Media Accelerator 3150 (Dynamic Video Memory Technology)

※ The DVMT actively utilizes part of the system memory when processing large graphic data like 3D graphics. Therefore, the size of the graphic memory is displayed as the sum of the actual graphic memory size and the utilized amount of memory, which is decided by the size of system memory.

※ Applications (graphics program, game, etc.) requiring strong graphic processing power may not work properly.

※ Specifications may differ by model type.

▶ Sound

Realtek High Definition Audio Codec (ALC272)

Built-in Stereo Speakers

▶ LAN

Realtek RTL8102E/RTL8103EL Family PCI-E Fast Ethernet NIC (10 / 100 Mbps)

RJ 45 Jack

※ **Optional** The LAN specifications may differ depending on the model.

▶ HSPA modem

LG LUM850T / LUM900D

Erricson F3307

※ **Optional** The HSPA modem is optional and may not be provided in some models. Also, its specifications may differ depending on the model.

▶ Wireless LAN

Realtek Semiconductor Corp. RTL8191SE

- ※ Wireless LAN specifications may differ by model type and cannot be arbitrarily changed by the user.
- ※ Manufacturers and installers cannot provide services related to human safety as this wireless device may cause radio interference.

▶ Weight

Full Installation: About 1,3 kg (including 6-cell battery) / 1,45 kg (including 9-cell battery)

Battery: About 320 g (6 cells) / 460 g (9 cells)

- ※ Weight descriptions may differ by model type.



12–2. Power Supply and Environments

▶ AC Adapter (Free Voltage)

Power Capacity: 40 W

※ Input: AC 100 to 240 V, 1.2 A, 50 / 60 Hz

※ Output: DC 20 V, 2 A

※ Caution: Use a rated and legitimate AC adapter, suitable for the model.

▶ Battery (Li-Ion)

Rated Capacity: 11,1 V or 10,8 V

※ Charging Hours: At room temperature (0 °C to 40 °C) and power turned off – less than 3 hours (6–cell battery)

※ Not charged under 0 °C.

※ The above temperatures are internal temperatures of the battery pack, and may be different from the actual room temperature.

▶ Operation and Storage Environments

Operating Temperature: 10 °C to 35 °C

Operating Humidity: 20 % RH to 80 % RH

Storage Temperature: –10 °C to 60 °C

Storage Humidity: 10 % RH to 80 % RH

▶ Power Consumption

Operating Conditions	Approximately 17,7 W	When running video clips
Standby mode (Idle state)	Approximately 6 W	When the monitor display is off
Power Saving mode (Sleep Mode)	0,7 W or lower	In S3(Suspend)
Off Mode (Standby(off) Mode)	0,5 W or lower	When the system is turned off

※ The above power consumption is calculated on the assumption that the battery is fully charged.

※ Power consumption during operation or standby may differ depending on the programs the system is running and product specifications.

※ Even when the system is turned off, it consumes a minute amount of power, if supplied. To cut off the power supply completely, disconnect the power cord from the power outlet.