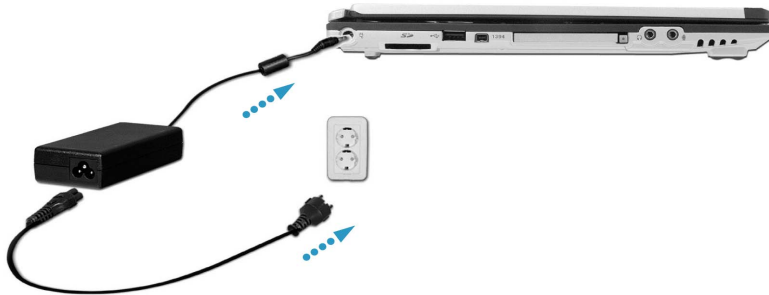


Using the AC adapter

An AC adapter or battery pack is needed to supply power to your computer. The AC adapter can be used with a 100~240V AC power source. Use only the AC adapter that comes with your computer. Using any other adapter may cause damage to your computer.

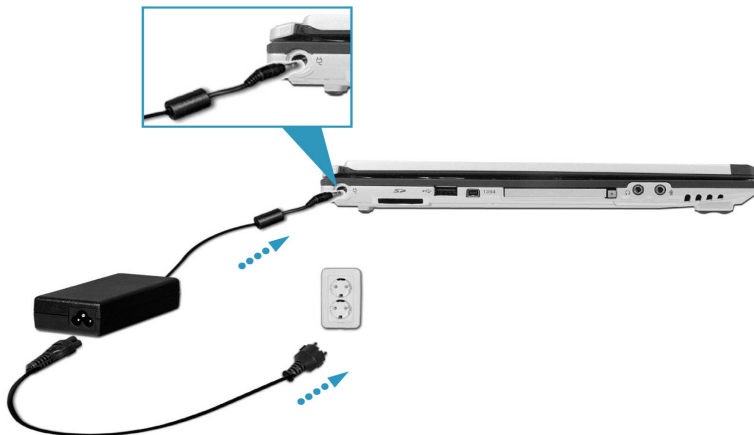
Connecting the AC adapter to an AC outlet (100~240V)

Connect the power cord to the adapter, and then plug the other end into an AC outlet.



Connecting AC adapter to the power device

Connect AC adapter to the power device at the left side of the computer.



Opening and positioning the LCD panel

Push the latch button, and open the display panel. Adjust the slope of the display panel for comfortable viewing. (Refer to page 24)

Power On

Press the power switch to turn on the computer.

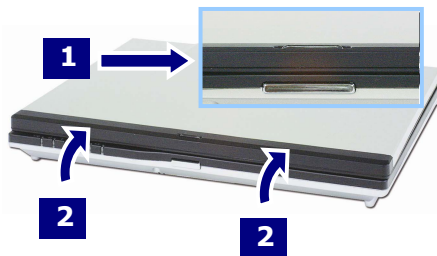


Turning the power on and off

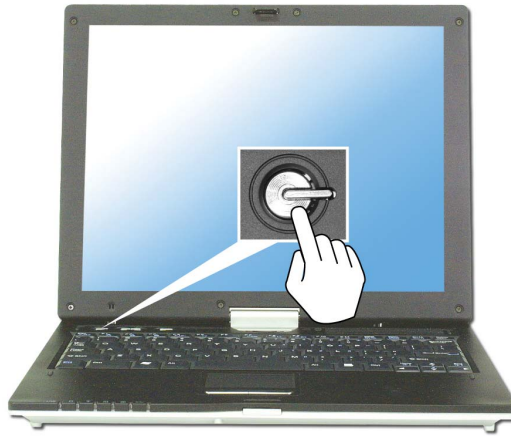
Before turning on the computer, make sure the AC adapter is connected or the battery is charged.

Turning on the computer

1. Push the latch button to the right¹ and open the display panel².



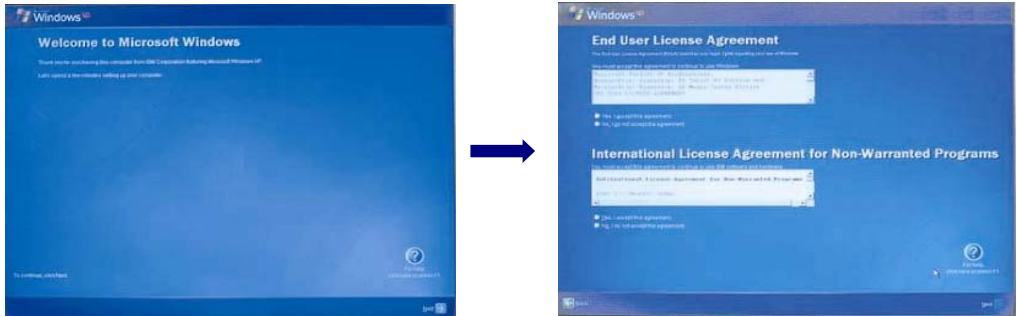
2. Press the power switch.



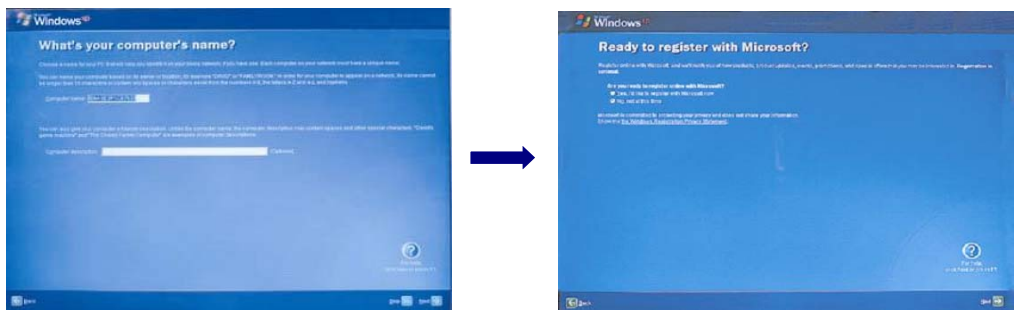
Note:

The power switch has an option to protect for pressing as user's disposal.

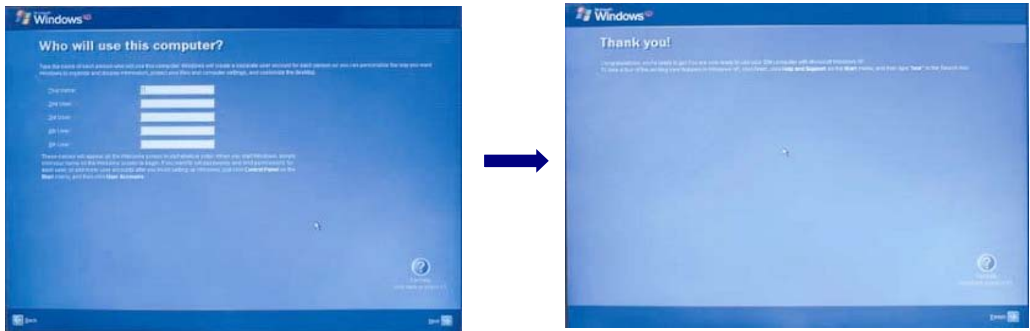
3. Pressing the power switch starts the self-diagnostic procedures; then Windows(R) XP startup screen is displayed.
4. If you turn the power on the computer for the first time, you have to register your copy of Windows XP. The registration process may differ depending on the model, but the difference does not affect the use of your computer.
5. In a moment, 'Welcome to Microsoft Windows' appears on the screen. Click [Next].
6. 'The End User License Agreement' appears on the screen. Be sure to read the agreement, select 'Yes, I accept', and click **[Next]**.



7. 'What's your computer's name?' appears on the screen. Type the name and description of your computer, and click **[Next]**.



8. 'Ready to register with Microsoft?' appears on the screen. Select 'No, not at this time' and click **[Next]**.
9. 'Who will use this computer?' appears on the screen. Type the names of the users and click **[Next]**.



10. 'Thank you!' appears on the screen. Click **[Finish]** to complete the registration process.

Turning off the computer

Quit all running applications; click **[Start]** and choose **[Turn Off Computer]** from the start up menu.



In the Turn off computer window, choose Shut down.



The computer is turned off automatically.



Caution

If the Drive in use indicator is on, do not turn off the computer, as doing so may damage the data being read from or written to the drive.



Warning

If Windows does not shut down correctly, press and hold the power switch for more than 5 seconds; the system will shut down. Turning off the computer this way may damage the system. It is recommended that you always turn off the computer by choosing Shut down in the Start menu.

If the computer does not shut down correctly while running applications, the data in the hard disk drive may be damaged.

If a program does not respond, press the Ctrl+Alt+Delete combination to start the Task manager; then quit the program or restart the system.

If Windows or program file is damaged by shutting down the system incorrectly, reinstall the program. The user is responsible for the loss of data caused by incorrect use of the computer.

Using Windows XP

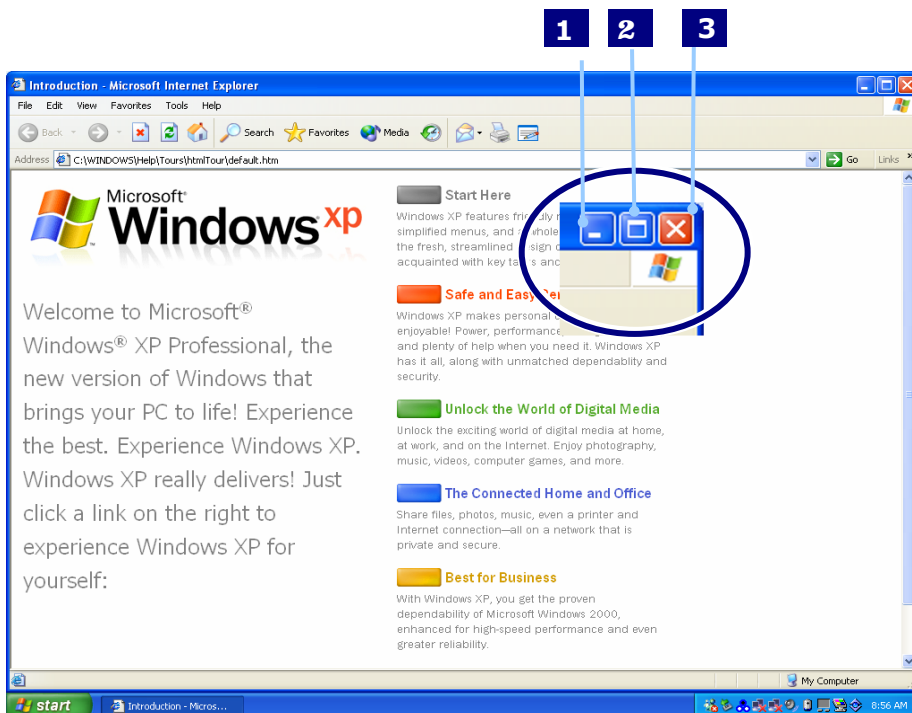
Windows XP is new, brilliant and easy-to-use. Background and title bar have been rearranged concisely, and it became easier to access the application programs from the start menu. Also, it allows the users with more diverse options to choose from when decorating their desktop.

Overview

Windows XP is an operating system that runs a computer. Learning the basics features in Windows is recommended to utilize a computer effectively. Click **[Start]->[Tour Windows XP]** to explore the features and tools available in Windows XP.

Window Buttons

1. Minimize
2. Maximize
3. Close



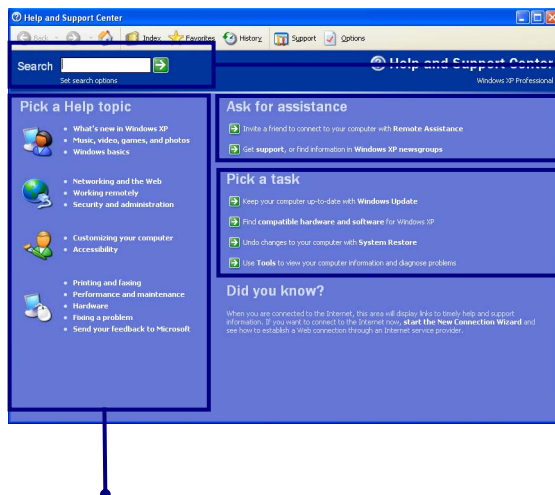
Help and Support

Click **[Help and Support]** to learn how to troubleshoot problems you may encounter while using the computer.

Click **[Start]->[Help and Support]**.



The following window appears.



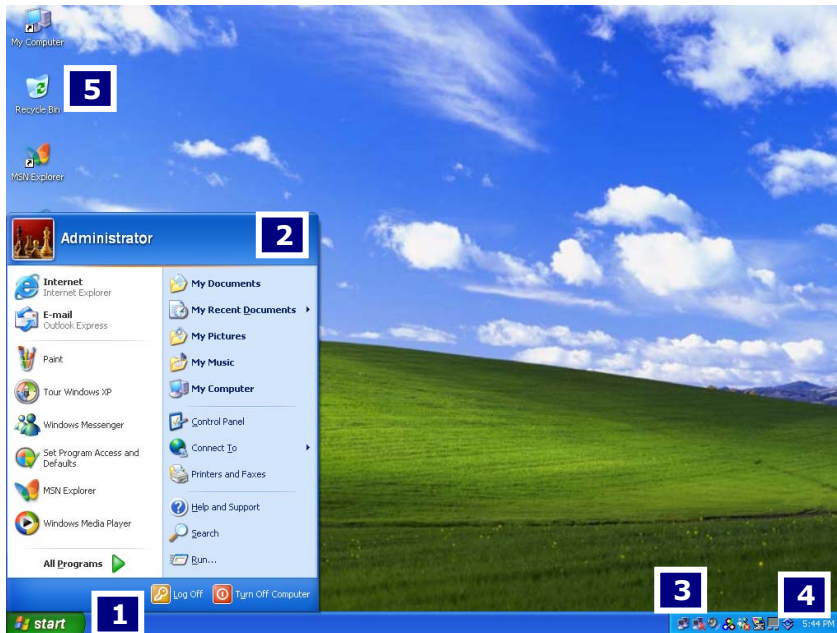
You can search for useful Help and Support information.

You can connect to the Internet and ask for assistance online.

You can setup and configure your computer to personalize your computing environment

Click to learn the features and troubleshooting information

Windows XP desktop



1. [Start] button

Click **[Start]** button to open the **[Start]** menu. Click **[All Programs]** to open the list of programs installed in the computer.

2. [Start] menu

[Start menu] shows everything you need to start working in the Windows XP environment.

3. Taskbar

Taskbar shows programs that are currently open and running.

4. Taskbar icons and clock

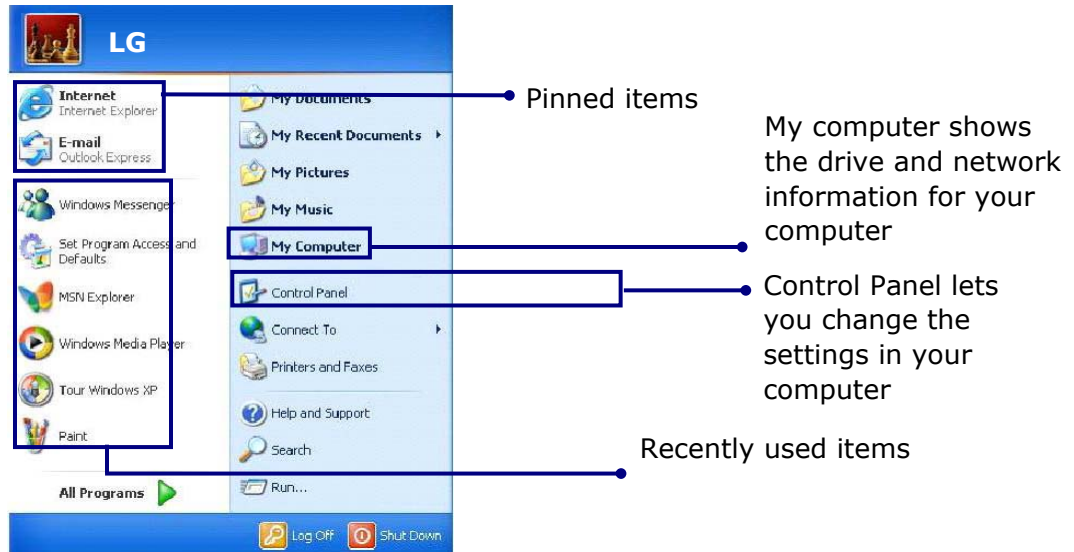
Taskbar icons show and let you configure ongoing activities such as battery power status, display properties, LAN settings, etc.

5. Recycle Bin

Put your unused items and files in the Recycle Bin. Right-click the Recycle Bin

and select **[Empty Recycle Bin]** to permanently delete the items inside the Recycle Bin.

Start menu



Changing the look of the Start menu

Right click **[Start]** button and select **[Properties]**.

In the Start menu tab, choose from either Start menu or Classic Start menu.

Click **[OK]** to apply the new setting.

Changing the pinned items in the Start menu

Right-click the item you want to pin it to the Start menu.

Select **[Pin To Start Menu]**.

The item is pinned at the top of the Start menu.

Showing the recently used items on the Start menu

Right-click on **[Start]** button and click **[Properties]**.

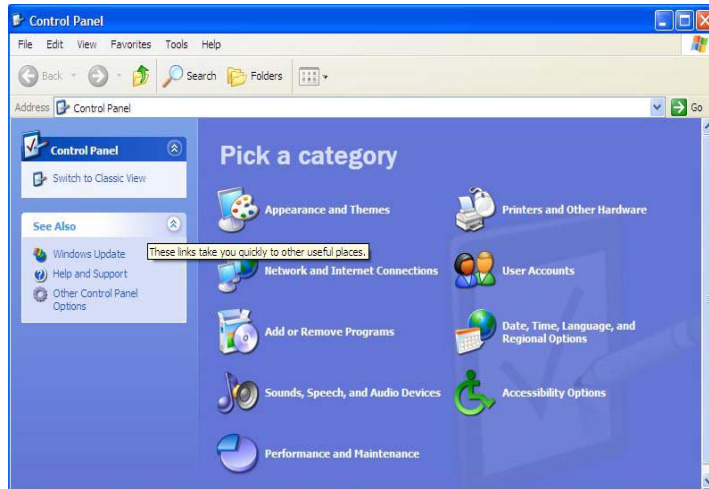
In **[Start Menu]** tab, select **[Start menu]** and click **[Customize]**.

In **[Advanced]** tab, check **[List my most recently opened documents]** and click **[OK]**. In Taskbar and Start Menu Properties window, click **[Apply]**->**[OK]**.

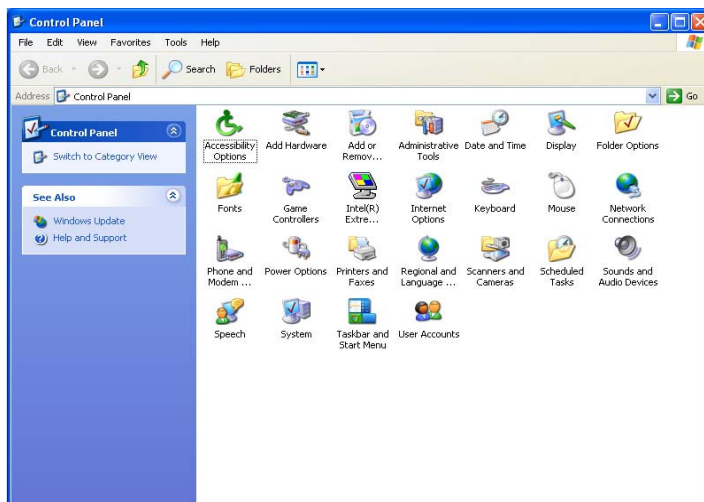
If you click **[Start]** button the next time, recently used items appear on the Start Menu.

Control Panel

The Windows XP Control Panel can display items in either Category View or Classic View.



Category View



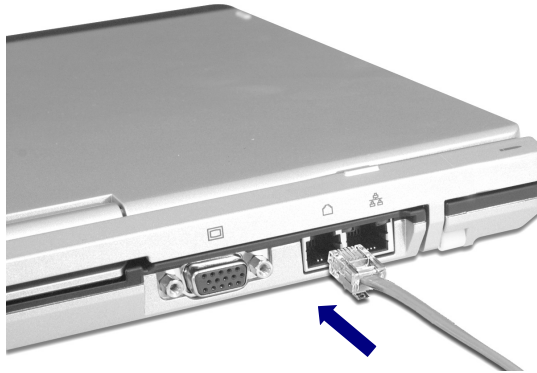
Classic View

Setting up Local Area Network (LAN) connections

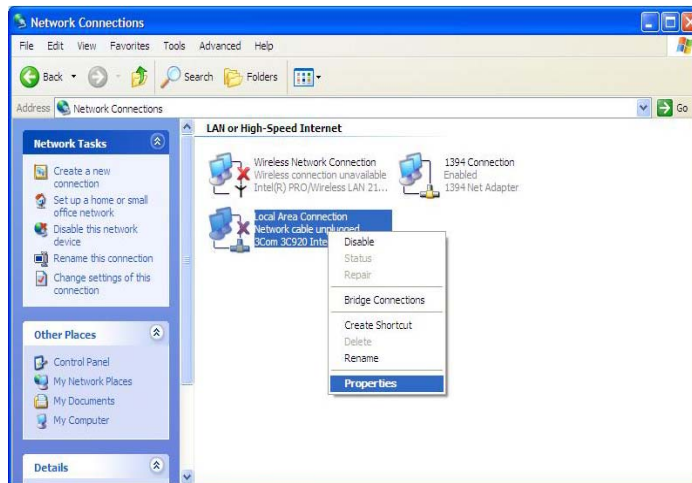
Local Area Network (LAN) connection provides high-speed network connection for your home or company.

Attach a LAN cable to the Ethernet (LAN) port.

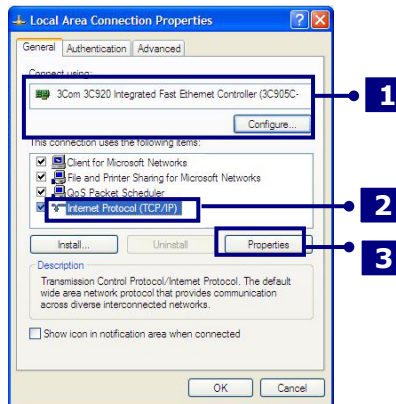
Click **[Start]->[Control Panel]->[Network Connections]**.



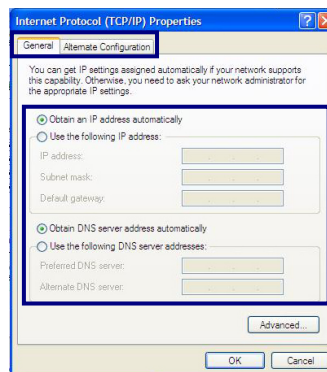
Right-click a Local Area Connection and select **[Properties]**.



If the following window appears, click **[General]** tab and **1.** check if 3COM 3C920 Integrated Fast Ethernet Controller is installed in the computer **2.** Then, check Internet Protocol, and **3.** click on **[Properties]**



Click on **[General]** tab, and Select **[Obtain an IP address automatically]**



Click **[Ok]** when Internet protocol (TCP/IP) setting is completed.

Note:

Ask your network administrator for the appropriate IP settings.

Using Wireless LAN

You can use Wireless LAN to connect to the network and use the Internet in your home and office. You can share files and folders over the network without the attaching network cables to the computer. For saving power, Wireless LAN is set up as power off when shipping. If you use Wireless network devices such as LAN /Bluetooth, use Wireless On/Off button after turning on wireless devices.

Connecting and using the wireless network

Right-click the Wireless network icon on the Taskbar and select **[View available wireless network]**.

Select AP(Access Point) you want to connect to and type necessary information. Click **[Connect]**.



If you place the mouse pointer on the Wireless network icon on the Taskbar, you can see the status of the wireless network.

Using IP Operator

IP Operator is useful to access to network everywhere by notebook.
User access to network at the several places (Home, Office, and Vendor etc.) can save and modify the network environment (IP address, Domain, Workgroup).

For more detailed information, refer to **[IP Operator]**.

Double click **[IP Operator]** icon on Desktop System tray.



If the following window appears, select LAN or High-Speed Internet at the drop down menu and type the computer name you use.

IP Operator

Profile: [Dropdown]

Computer Name: LGE-00HIRTMB6LZ

LAN or High-Speed Internet: [Dropdown]

Wireless Network Connection: [Dropdown]

Domain: [Radio Button]

WorkGroup: WORKGROUP

Wireless Configuration: [Manual Set] [Scan/Set]

No Wireless Network is selected

Obtain IP: [Radio Button]

Use following: [Radio Button]

IP: [Text Field]

Subnet mask: [Text Field]

Default: [Text Field]

Obtain DNS automatically: [Radio Button]

Use following DNS: [Radio Button]

Preferred DNS: [Text Field]

Alternate DNS: [Text Field]

Apply Save Delete Help Exit

Type the name is appropriate at **[Profile List]** after making a decision whether a user belonging to **[Domain]**, or a member of **[Work Group]**.

Choose one of setting options as below.

If setting **[Obtain an IP address automatically]**,

- IP address, Subnet mask, Default Gateway windows are changed the color as grey automatically.

If setting **[Use the following IP address]**

- Insert IP address, Subnet mask, Default Gateway window. Then, insert DNS Server.

Click the **[Profile Save]** button when finishing inserting items in **[Profile List]**

Note:

When setting **[Obtaining an IP address automatically]**, it is unavailable to insert IP address, Subnet mask, and Default gateway.

If pressing **[Profile Apply]**, no items appear at **[Profile List]**.

If a user needs to apply the specific item, select one of items at **[Profile List]**, and click **[Profile Apply]**.

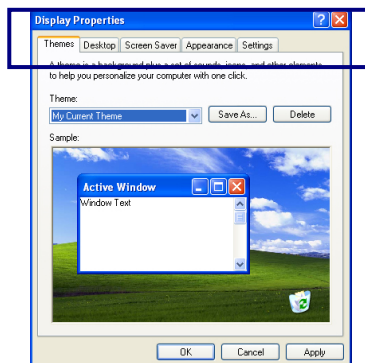
Changing the Themes and Desktop background

Using the Windows Classic Theme

Click **[Start]->[Control Panel]->[Display]**.

Click **[Themes]** tab

Select **[Windows Classic]** from the **[Theme]** drop down menu.



Using a different theme

1. Click **[Start]->[Control Panel]->[Display]**.
2. Click **[Themes]** tab
3. Select another theme from the **[Theme]** drop down menu.

Note:

In Appearance tab, you can click **[Advanced]** button and change the color scheme, font size, and windows and button styles.

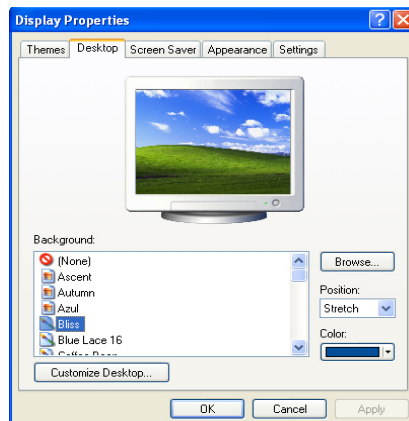
In Themes tab, you can change the overall appearance of the desktop.

If there is more than one user using the computer, each user can apply different theme and desktop appearances.

Changing the desktop background

Click **[Start]->[Control Panel]->[Display]**.

Click **[Desktop]** tab. (OR you can right click on the mouse while in desktop background. When a short cut menu pops up, choose **[Properties]**)

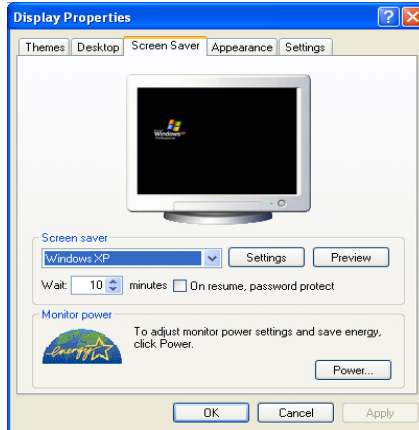


Scroll down the **[Background]** drop down menu and select an image for the background. You can also click **[Browse]** button and select an image you have saved.

Setting the Screen Saver

Click **[Start]->[Control Panel]->[Display]**.

Click **[Screen Saver]** tab.



Select the idle time before activating the Screen Saver from **[Wait]** drop down menu. Check **[On resume, password protect]** to protect the computer from unauthorized users.

Taskbar

Taskbar displays programs and files that are currently open. If there are many programs running on the computer, the Taskbar group together files from the same program to prevent taskbar icons from cluttering up the Taskbar.



Desktop cleanup

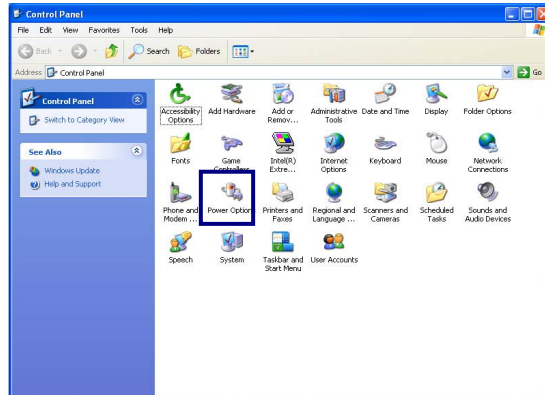
Desktop Cleanup Wizard removes unused desktop items to a folder. The Desktop Cleanup Wizard runs every 60 days but you can also run it manually.

1. Click **[Start]->[Control Panel]->[Display]**.
2. Click **[Desktop]** tab.
3. Click **[Customize Desktop] -> [Clean Desktop Now]** button.

Using the Power Options

Windows XP uses its own power-saving program to manage the battery power.

Click **[Start]->[Control Panel]**. Double-click **[Power Options]**.

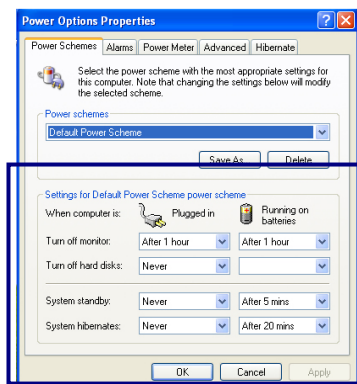


In Power Options Properties window, change the settings best suited for your computing environment.

Power Options Properties

Click **[Power Schemes]** tab.

Drop down the menu and select **[Portable/Laptop]** to set notebook PC with the appropriate power schemes. This includes detailed timeline for **[Turn off monitor]**, **[Turn off hard disks]**, **[System standby]**, and **[System hibernates]**.



Note:

If the computer enters System standby mode, the hard disk is turned off to conserve the battery power.

In System standby mode, you cannot save your work. Be sure to save your work before entering System standby mode.

When the computer enters System hibernation, the computer saves all your work in the hard disk and turns off the computer.

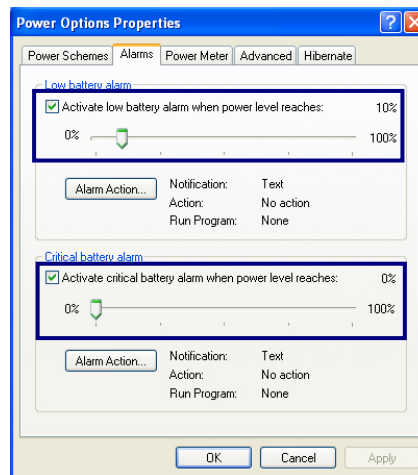


Caution

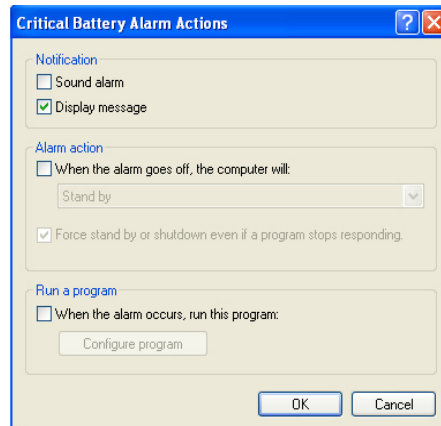
If the computer enters System standby or hibernation mode while playing a computer game, a serious error may occur. Be sure to quit the computer game before entering a power-saving mode.

Power Options Properties

Click **[Alarms]** tab. Check **[Low battery alarm]** and **[Critical battery alarm]**, and move the sliders to set the power level to activate low battery alarm and critical battery alarm.

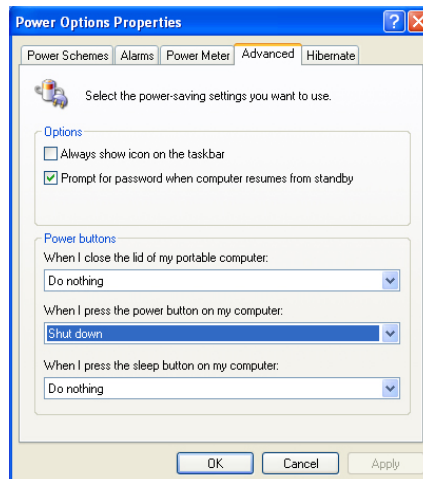


You can be notified with Sound alarm or Display message. You can also set the alarm action such as putting the computer into System standby mode or System hibernation mode. You can also run a specific program when the alarm goes off.



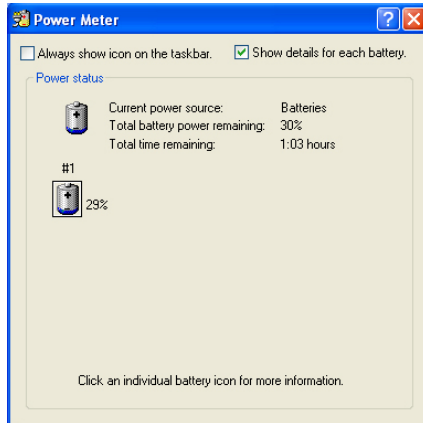
Advanced tab

In Options, you can set the computer to prompt for password when computer resumes from standby. You can also set the computer to enter a power-saving mode when closing the display panel, pressing the power switch or the combination of Fn+F4.



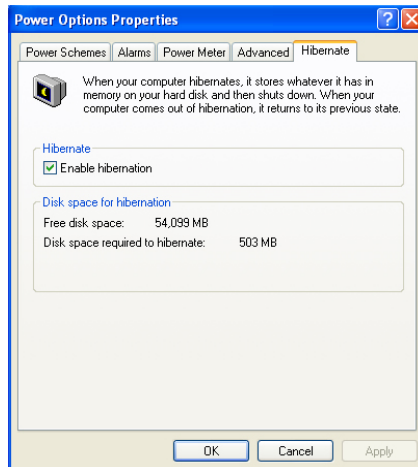
Power Meter

You can click the Power Meter icon on the Taskbar to check the power level of your computer.



System Hibernation

In Hibernate tab, you can enable or disable System hibernation mode and check the disk space needed for hibernation.





Caution

Do not remove the battery pack when the AC adapter is not connected to the computer.

If you keep using the computer while low on the battery power, you may lose the data when the battery power goes out. If you are notified of low battery power, save your data and connect the AC adapter, or turn off the computer and change the battery pack.

Attaching external devices

Attaching a USB device



USB mouse (not included)

You can connect to keyboard, hub, digital camera and other devices that support USB.

Attaching an external monitor

Note: Turn off the computer before attaching an external monitor. Use a standard VGA connector that should be 16mm wide. Connectors wider than 17mm will not fit in.



External monitor
(not included)

Monitor toggle function (switch the monitor by short-cut keys)

After install the external monitor to the notebook PC, use Fn + F7 to switch the main monitor to LCD only, monitor only, and LCD + monitor both, in sequence.

Attaching an IEEE 1394 device (Option)



Digital Camera
(Purchased separately)

You can attach IEEE 1394 devices such as external hard disk drive or CD-RW drive, MP3 player, digital camera, and video camcorder.