

Using Battery Miser

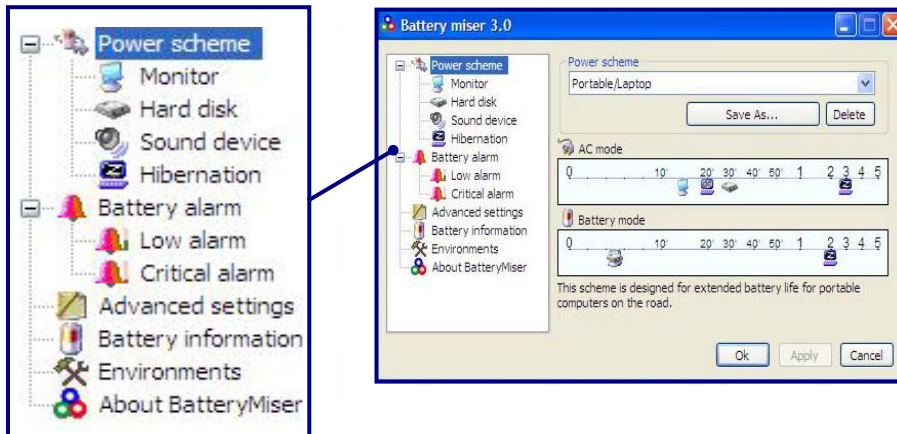
Battery Miser is the program to manage energy saving function makes the battery of notebook computer maximum. When using Battery Miser, it is available to use both original power management functions of Windows and the advanced power management functions of battery miser.

For more detailed information, refer to **[About Battery Miser]**

Double click **[Battery Miser]** icon on Desktop System tray.



Battery Miser main screen appears as below.



Power scheme: The group that manages the power to reduce power consumption of computer peripheral units.

Battery alarm: If the battery power gets down to low alarm, critical alarm, user can define the option for alarm is working.

- * **Note:**
- * When pressing the keys Fn + F8, it keeps unused sound device power management(Sound device is always ON).
- * If pressing one more, it return to the original set point.
- * When pressing the keys Fn + F9, it keeps unused Monitor power management(Monitor is always ON).
- * If pressing one more, it return to the original set point.

Using the keyboard

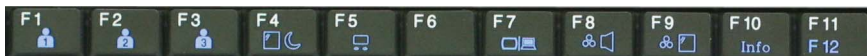
The keyboard is used for entering text and commands in the computer.

Component

The keyboard is composed of character, number, and other special function keys.



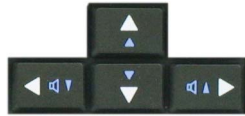
Function keys: Function keys enable you to perform different operations depending on the operating system and application program you use.



Hot keys: Hot keys (shortcuts) are used in conjunction with Fn key to provide shortcuts for some of the predefined operations, such as entering power-saving mode.



Cursor control keys: You can move the cursor in the direction of the arrows.



Editing keys: You can move the cursor to the beginning or end of the current line, or up and down the screen.



Character and number keys: consist of character keys, number keys, special character keys, and spacebar. Spacebar is used for creating a space between characters.



Embedded numeric keys: You can press the combination of Fn and ScrLk keys to enable the embedded numeric keypad. Num Lock indicator lights up and enables you to use the embedded numeric keypad shown below. You can press the combination of Fn and ScrLk keys again to disable the embedded numeric keys.





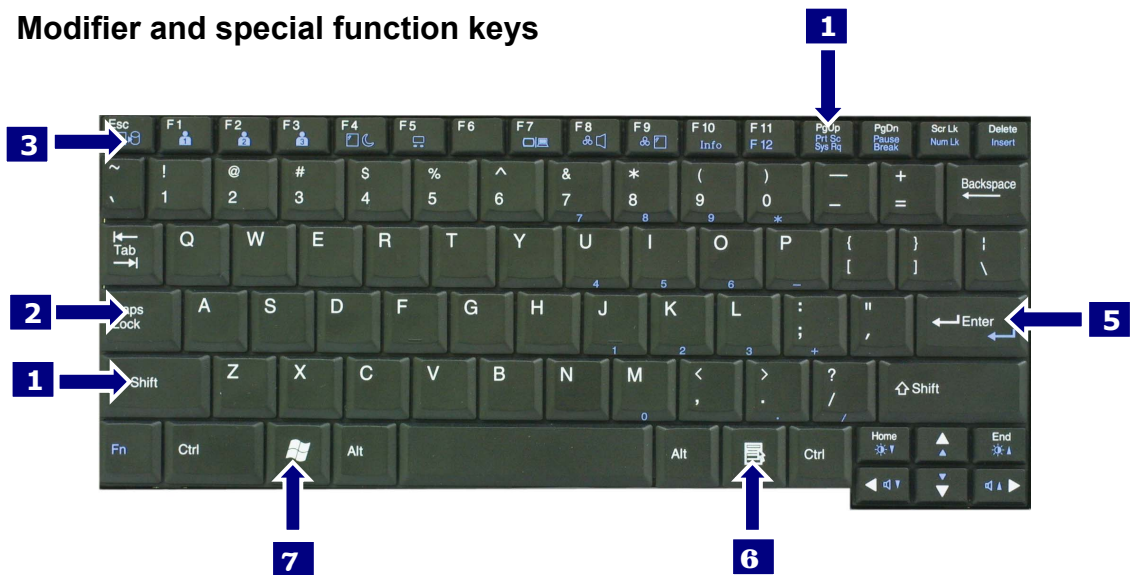
Caution

Do not spill water, juice, coffee, etc on the keyboard as it may damage the computer and cause an electric shock.

Note:

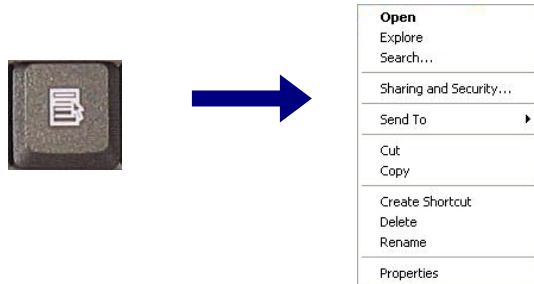
In the middle of entering characters, if numbers are entered instead of characters, press the combination of Shift and ScrLk to disable the embedded numeric keys.

Modifier and special function keys

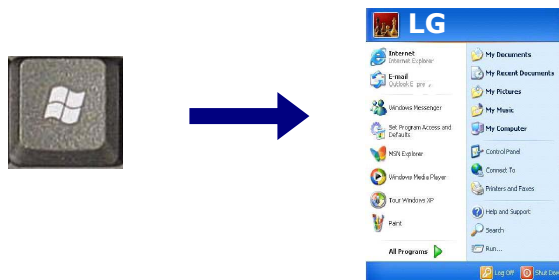


- 1. Shift key:** Hold Shift key down and press another key to enter the upper case letter for the key.
- 2. Caps Lock key:** Press Caps Lock key to lock the keyboard in the upper case position. When the Caps Lock indicator lights up, you can press another key in combination with Shift to enter the lower case letter for the key.
- 3. Esc key:** Use Esc key to quit programs or cancel a operation in a program.
- 4. PrtSc (Print Screen) key:** Press PrtSc key to take the snapshot of the entire area visible on your screen and store it in the clipboard.
- 5. Enter key:** Press Enter key to enter a command or to end a line.

6.Shortcut menu key: Press Shortcut menu key to view shortcuts for the current program. (Shortcut menu key works the same as the right-clicking the mouse button)



7. Windows(R) key: Press Windows key to view the Start menu.



Note:

You can lock the keyboard in the upper/lower case position by pressing Caps Lock key. Caps Lock indicator lights up in upper case position. You can use the combination of Shift and a character key to enter its upper/lower case letter.

Hot keys

The following Hot keys provide you with shortcuts to operations, such as adjusting the brightness of the computer display.

Fn+F1 : User-defined Hot key. (Setting is available at OSD)

Fn+F2 : User-defined Hot key. (Setting is available at OSD)

Fn+F3 : User-defined Hot key. (Setting is available at OSD)

Fn+F4: Force the computer to enter power-saving mode. (ex: system standby and hibernation)

Fn+F5:

Press the combination once to disable the touch pad, and press again to enable the touch pad. (The touch pad initialization takes 1~2 seconds, so wait for the Initialization to end before using the touch pad)

Fn+F7:

When the computer is attached to an external monitor, you can change the display output location with Fn+F7 combination. You can switch to and from the three types of display modes, LCD display only, the external monitor only, or both at the same time.

Fn+Home:

The computer display becomes darker.

Fn+End:

The computer display becomes brighter.

Fn+F8:

Enable/disable Auto Sound power management (battery mode only). Refer to Battery Miser Help.

Fn+F9:

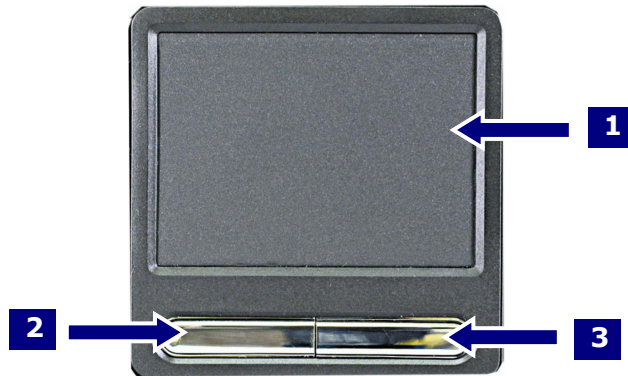
Enable/disable Auto Brightness control. Refer to Battery Miser Help.

Fn+Esc:

Maximum power-saving mode. (when OSD is installed)

Fn+F10 : System information**Fn + ScrLk/Num Lk: Number lock****Fn+Delete : Insert****Fn+↑: Scroll Up****Fn+↓: Scroll Down****Fn+→ : Volume Up****Fn+← : Volume Down****Fn+F11: F12****Fn+PgUp : Prt SC****Fn+PgDown : Pause**

Using the touch pad (Mouse)



The touch pad can be used with a mouse at the same time. It has a scroll button, which functions similar to a scroll wheel on a mouse.

1. Touch pad: used to move the pointer.
2. Left button: used to select or click items.
3. Right button: functions similar to the right button on a mouse.



Caution

Guidelines on using the touch pad

Do not touch the touch pad with a sharp or pointed object as doing so may damage the touch pad.

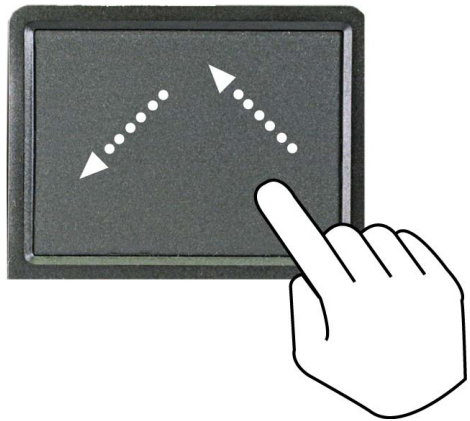
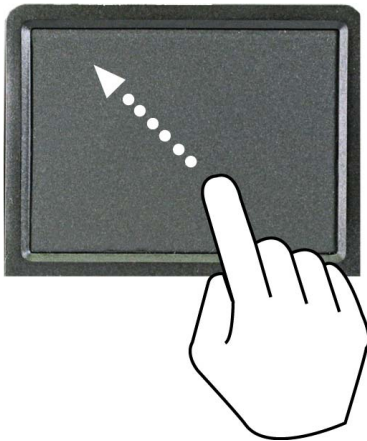
Do not remove the cover sheet of the touch pad as doing so may damage the touch pad.

Do not use the touch pad with two fingers, wearing gloves, or wet hand as it may not function correctly. Using the touch pad with a dirty or oily finger may damage the touch pad.

Do not exert too much pressure on the touch pad as doing so may result in injuries to your finger or wrist.

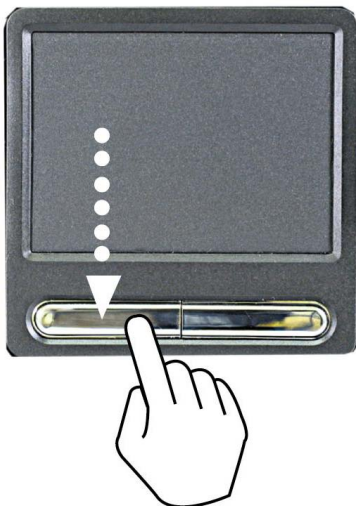
Moving the pointer on the screen

Gently place your finger on the touch pad and slide it in the direction in which you want the pointer to move.

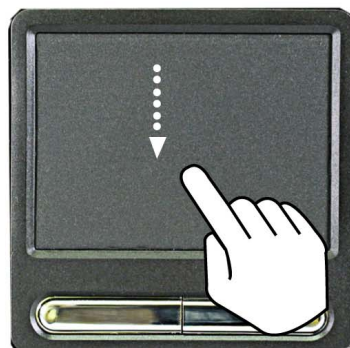


Making the selection (Click)

To click a button, quickly press and release the left button. You can click the left button or gently tap the touch pad once to select an item on a menu or an icon on the screen, or position the cursor in a document.

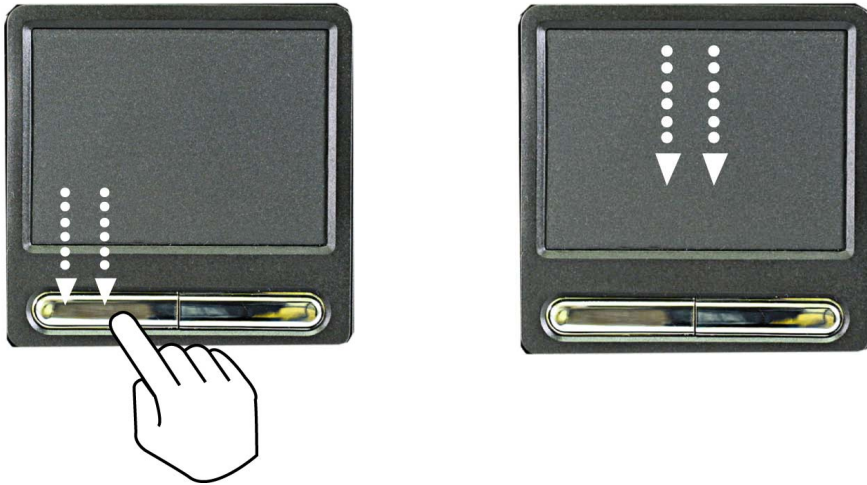


OR



Double-click (Run)

To double-click a button, quickly press and release the left button twice. You can also tap the touch pad twice to get the same result. To launch an application, you can select and double-click the .exe file or the program icon.



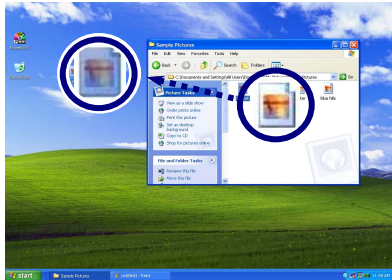
Drag and drop

To drag an object, select and move the object by clicking and holding the left button and sliding the finger across the touch pad without releasing the button.

To drop the object you have just dragged, release the left button.

You can use drag and drop to move files from one location to another.

For example, if you want to place a file in the recycle bin, place the pointer above the file you want to move, press the left button and hold, slide your finger across the touch pad to move the file and release the left button above the recycle bin.



Drag: Move the icon without releasing the left button

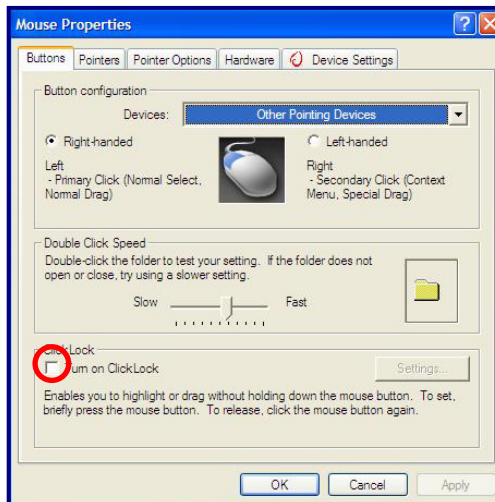
Drop: Release the left button above the recycle bin.

ClickLock: enables you to select text or drag a file without having to continuously hold down the mouse button or touch pad button.

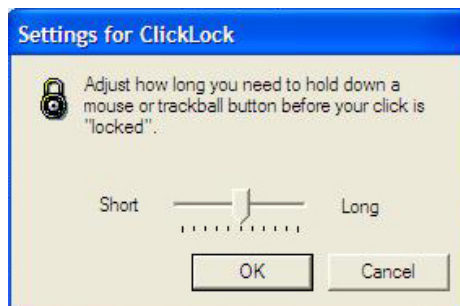
Follow the instruction below to enable ClickLock. If ClickLock is enabled, you can hold down the mouse button or touch pad button for a moment and then release it, and still get the same effect as continuously holding down the button. You can drag an object with ClickLock enabled and press again to release the button and drop the object.

Click and open the Mouse Properties window.

On the Buttons tab, under ClickLock, select Turn on ClickLock check box.

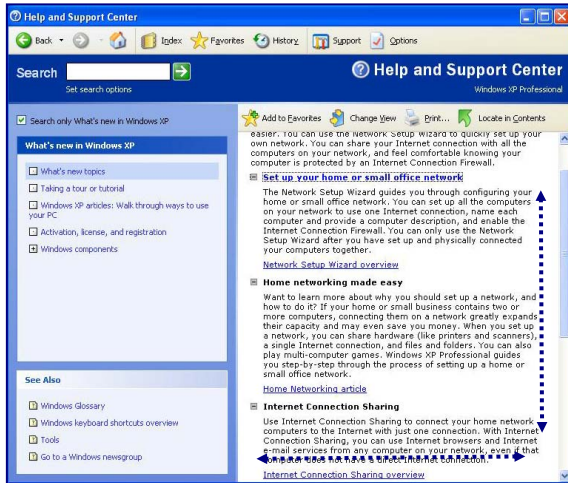


Click Settings and adjust how long you need to hold down a mouse or touch pad button to enable ClickLock, and then Select **[OK]**.



Using the scroll up/down function

Your computer supports scroll function. When using scroll function, mouse cursor at the arrow does not move. Only the scroll function will move.



You can use the scroll up/down function by pressing Fn + direction key. In a program window with a scroll bar, you can move up and down the windows using Fn + direction key. When you scroll a window using the scroll up/down function, the pointer on the screen does not move

System Setup

The system setup saves your computer's hardware configurations in CMOS RAM. The system setup provides you with information, such as the size and type of your hard disk, size of the installed memory, date, and time.

Starting the system setup

Setting a password. (Page 71)

Changing or removing the password. (Page 74)

Recovering the factory default settings. (Page 75)



Caution

Do not change the system setup arbitrarily. Incorrect system setup may result in errors while using the computer.

The menu and default factory settings of the BIOS Setup Utility may look different from this manual. They may have been changed to improve the performance of the system.

Keys used in the system setup

Enter: Select the current item.

Esc: Close the current window or move to the previous window.

CursorControl Keys: Move up, down, left, and right.

+ -: Increase and decrease the value.

Page Up: Move to the first item.

Page Down: Move to the last item.

F10: Save and exit the system setup.

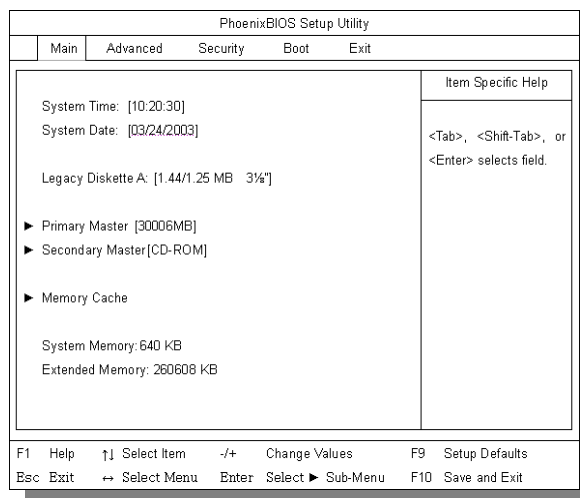
Note:

Cursor control keys (arrow keys) move the cursor up, down, to the left and right.

Turn on the computer.

When LG logo appears on the screen, press **F2**.

The BIOS Setup Utility window appears.



Setting a password

If you want to protect the system setup from an unauthorized user, follow the instructions below to set a password.

You can set a password in the BIOS Setup Utility program.



Caution

If you forget the password, you cannot gain access to your system. Make sure you write down the password in a safe place only you can refer to in case you forget the password.

Setting a supervisor password

A password protects your computer from unauthorized users. The factory default

setup does not have a password. A supervisor password prevents unauthorized users from changing the system setup.

Start the BIOS Setup Utility.

Use arrow keys to select Set Supervisor Password under Security menu, and then press Enter.

PhoenixBIOS Setup Utility				
Main	Advanced	Security	Boot	Exit
<div>Set Supervisor Password [Enter] Set User Password [Enter]</div>				<div>Item Specific Help Supervisor Password controls access to the setup utility.</div>
<div>F1 Help ↑↓ Select Item -/+ Change Values F9 Setup Defaults Esc Exit → Select Menu Enter Select ► Sub-Menu F10 Save and Exit</div>				

Note:

You can use a supervisor password to gain access and change items in the BIOS Setup Utility, and select Power on Boot. We recommend using a user password if someone else has to use the computer.

If the following message appears, enter a new password and press Enter. A password must be consisted of character A~Z and numbers 0~9, and have the maximum length of 8.

Set Supervisor Password	
Enter New Password []
Confirm New Password []

If the following message appears, press Enter.

Setup Notice
Changes have been saved. [Continue]

Press **F10** to save the new settings.

If the following message appears, select **[Yes]** and press Enter to restart the computer.

Setup Confirmation
Save configuration changes and exit now?
[Yes] [No]

Setting a user password

A user password is a secondary compared to a supervisor password. You must set a supervisor password in order to set a power-on password.

Start the BIOS Setup Utility and use arrow keys to select Security menu. Use arrow keys to select Set User Password and press Enter.

PhoenixBIOS Setup Utility			
Main	Advanced	Security	Boot Exit
Set Supervisor Password [Enter] Set User Password [Enter]		Item Specific Help Supervisor Password controls access to the setup utility.	
F1 Help ↑↓ Select Item -/+ Change Values F9 Setup Defaults Esc Exit ← Select Menu Enter Select ► Sub-Menu F10 Save and Exit			

Note:

A power-on password gives limited access for changing the settings in the BIOS Setup Utility compared to a supervisor password.

If the following message appears, enter a new password and then press Enter. A password must be consisted of character A~Z and numbers 0~9, and have the maximum length of 8.

Set User Password	
Enter New Password	[]
Confirm New Password	[]

If the following message appears, press Enter.

Setup Notice
Changes have been saved. [Continue]

Press **F10** to save the new settings.

If the following message appears, select **[Yes]** and press Enter to restart the computer.

Setup Confirmation
Save configuration changes and exit now? [Yes] [No]

Changing or removing the password

You must know the password to change or remove it.

Start the BIOS Setup Utility, enter your password, and then press Enter.

To change the password, follow the instruction on Setting a password.

To remove the password, follow the instructions below.

Use arrow keys to select Security menu, and select a password you want to remove, and then press Enter.

If the following message appears, enter the current password in the bracket next to **Enter Current Password**, and then press Enter.

Press Enter without entering a password in the brackets next to **Enter New Password** and **Confirm New Password**.

Set User Password
Enter Current Password []
Enter New Password []
Confirm New Password []

If the following message appears, press **Enter**.

Setup Notice
Changes have been saved. [Continue]

Setup Confirmation
Save configuration changes and exit now? [Yes] [No]

Press **F10** to save the new settings.

If the following message appears, select **[Yes]** and press **Enter** to restart the computer.

Recovering the factory default settings

If a user accidentally modifies the system setup, follow the instruction below to recover the factory default settings.

Start the BIOS Setup Utility, and use arrow keys to select **Exit**.
Use arrow keys to select **Load Setup Defaults**, and press **Enter**.

PhoenixBIOS Setup Utility				
Main	Advanced	Security	Boot	Exit
<div>Exit Saving Changes Exit Discarding Changes Load Setup Defaults Discard Changes Save Changes</div>		<div>Item Specific Help Exit System Setup and save your changes to CMOS.</div>		
F1 Help ↑↓ Select Item -/+ Change Values F9 Setup Defaults				
Esc Exit ←→ Select Menu Enter Select ► Sub-Menu F10 Save and Exit				

If the following message appears, select **[Yes]** and press **Enter** to recover the factory default settings.

Setup Confirmation	
Load Default configuration now?	
[Yes]	[No]

Setup Confirmation	
Save configuration changes and exit now?	
[Yes]	[No]

Press **F10** to save the new settings. If the following message appears, select **[Yes]** and press **Enter** to restart the computer.

System Recovery

System Recovery offers to format the hard disk as shipping statement of the product. User must make backup files to minimize a risk of losing data. Windows CD is not provided separately the product which offers system recovery contracted by Microsoft.

Using Full Recovery

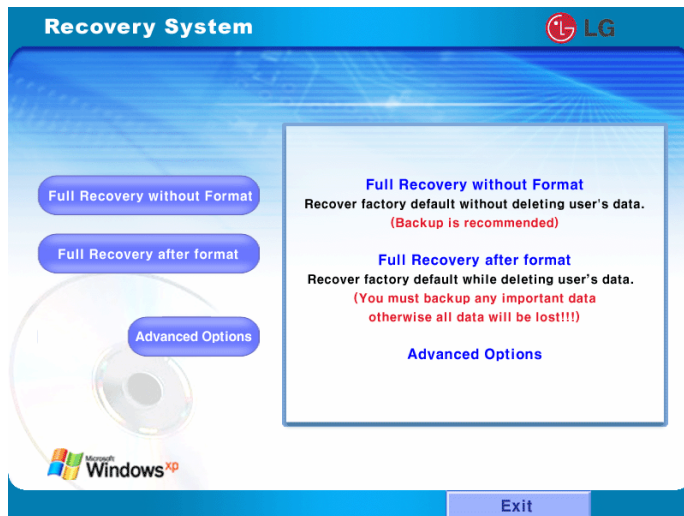
To recover hard disk completely user must make backup for all software and data on the computer.

If Windows installation is complete, user must fill out Windows user registration information as the first time to buy the product.

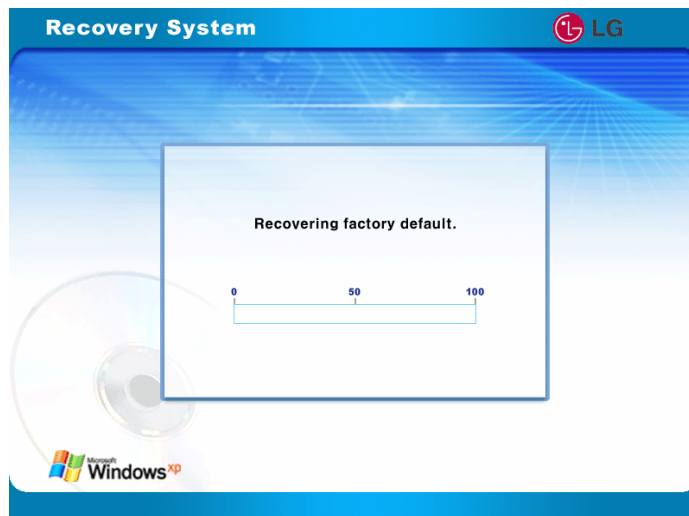
1. Press F11 with appearing preload image on the screen.



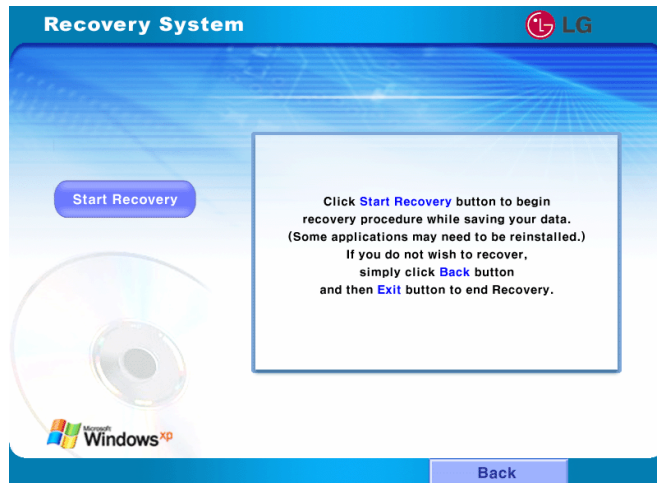
2. If the following screen appears, select one of items for work.



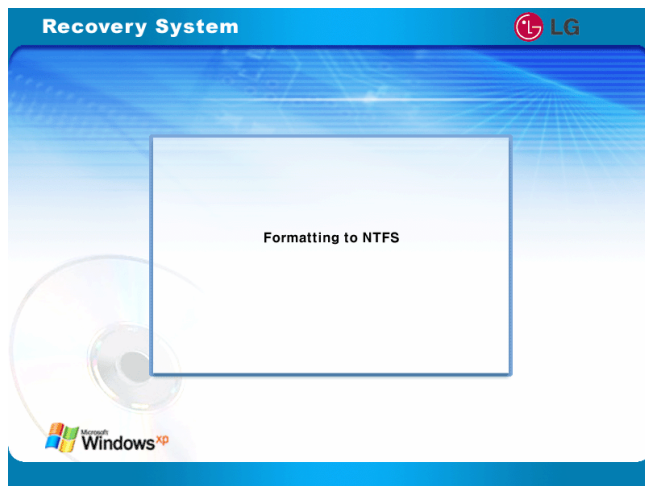
3. Select [Full Recovery without Format], or [Full Recovery after format].
 - * In the case of selecting [Full Recovery without Format].



[Recovering factory default] appears.



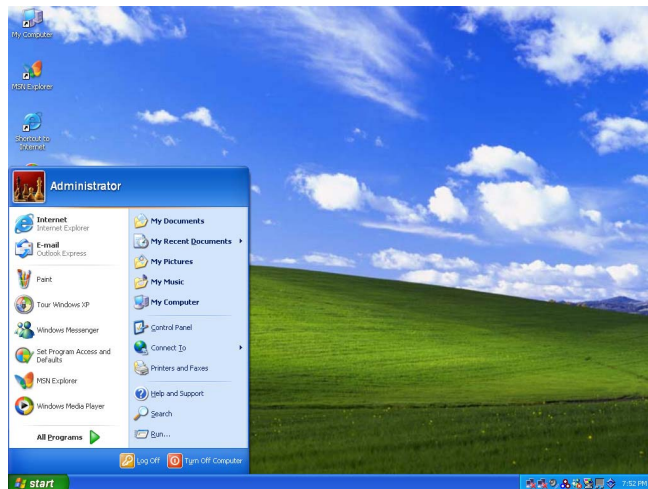
* In the case of selecting [Full Recovery after format]
Click [Start Recovery] .



"Formatting to NTFS" appears.

When starting [Full Recovery], next procedures appears on the screen.
If the following screen appears after restarting system, fill out Windows user registraion information.

When clicking [Finish], the system returns to normal.



Driver re-installation

1. Turn on the computer and go to [Start]-[All Programs]-[GILJABI].
2. Select the device driver you want to install.
3. Follow the instructions to complete the installation. Some device drivers require you to restart the computer after the installation.



Installing memory

When you are using the computer, you may want to increase the memory capacity.

About memory

Your computer uses DDR (Double Data Rate) SDRAM SO-DIMM (Dual In-Line Memory Module) with 200 pins.

Each memory socket can support a memory module from 64MB to 1024MB, and the maximum memory capacity of the computer is 2048MB.

Before installing memory

When installing or removing the memory modules, be careful not to expose them to the static electricity as it can damage the modules.

Make sure the type of memory installed in your computer is the same as the memory you are about to install.

Note:

Use only the correct type of memory module (DDR SDRAM using 2.5V).

Different models of computer can use different memory modules.

DDR memory has higher data-transfer rate and different shape compared to the typical memory.



Caution

Your computer supports PC2700/DDR SDRAM SO-DIMM
333MHz/266MHz/200MHz with FSB Frequency of 400MHz.



Warning

Before disassembling the computer for upgrading purposes, turn off the power and remove the power cord, phone line, and battery pack. There is the risk of electric shock or fire. If you need to open the computer cover, contact the customer service for help.

Purchasing memory

Be sure to buy the correct type of memory modules for your computer.

Type: PC2700 (200 pin DDR SDRAM SO-DIMM)

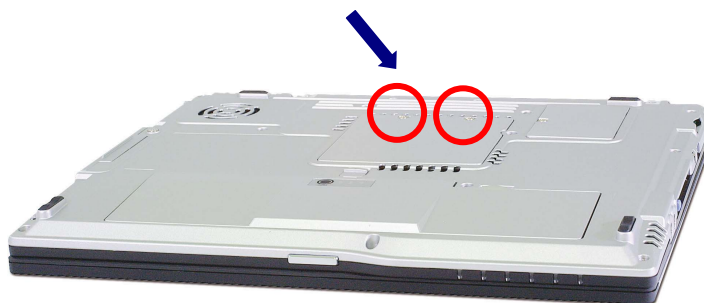
Speed: 333MHz (166MHz X2), 266MHz (133MHz X2), 200MHz (100MHz X2)

Size: 128MB, 256MB, 512MB, 1024MB

Installing memory

Main board configuration, memory socket, and memory module may look different in different models of computer.

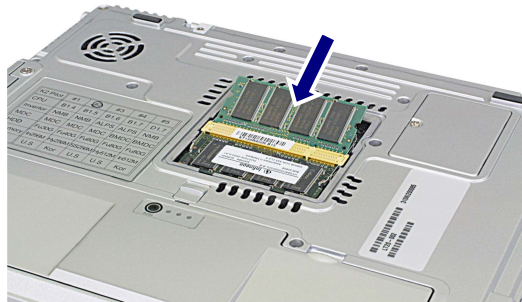
Loosen the screw at the bottom of the computer, and remove the memory slot cover.



Note:

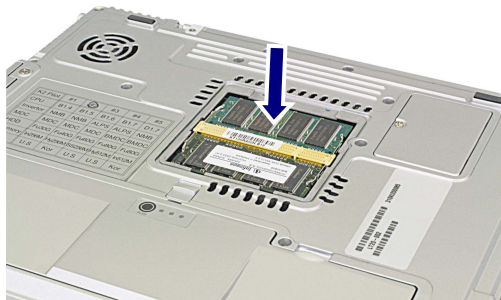
Before removing the cover, shut down your computer, remove AC adaptor and battery pack, and detach any device or cable that are attached to the computer.

Use the notch on the memory to make sure the memory aligns with the socket, and then inserts the memory into the socket at an angle of approximately 30 degrees.



Note:

Push down the memory until the latch firmly secures the memory on the socket.



Push down the memory until you hear a click.



**Caution**

Use only the memory module sold by LG. Using other memory modules can damage your computer.

Close the cover and tighten the screw.

After the installation, reboot the computer. If you see an error message regarding memory capacity, click F2 to enter the BIOS Setup Utility and save the settings.

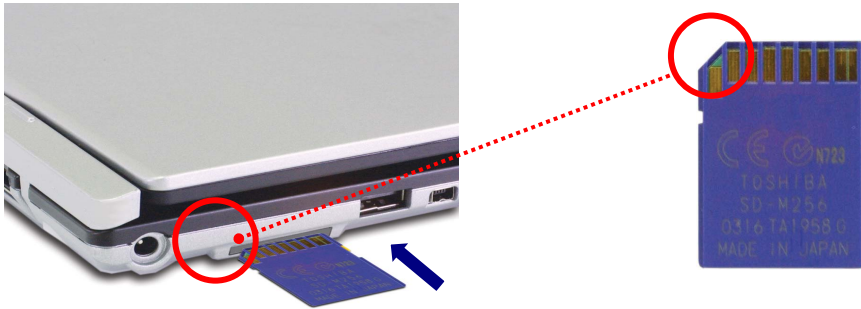
Note:

When rebooting the computer, make sure the size of installed memory is correct. If different, re-install the memory module.

Inserting SD Memory Card

Turn on the computer, and place the SD Memory Card in the SD Memory Card slot.

Note: It may look different product by its option.



Push the SD Memory Card into the slot until it clicks.



Removing SD Memory Card

1. Press the SD Memory Card with the tip of your finger.
2. The SD Memory Card ejects.



Model

LU20

Processor

Intel Mobile Pentium-M processor

(L2 cache: 1024KB, Micro-FCBGA package : 1.4GHz or more)

Mobile Intel Celeron Processor

(L2 cache: 512KB, Micro-FCBGA package : 1.3GHz or more)

Note: The CPU cannot be replaced or upgraded by the user. The computer is equipped with a different CPU depending on the model type.

Memory

Built-in: 256MB DDR SDRAM SO-DIMM

Maximum: 1024MB on each slot and 2048MB combined

Memory Type: DDR SDRAM SO-DIMM (128MB, 256MB, 512MB, and 1024MB)

BIOS ROM

ROM: 8Mbit

Storage devices

2.5-inch hard disk drive (The capacity of the hard disk drive is different depending on the model type.)

PC Card slot

SD Memory Card slot

External I/O Interfaces

External monitor port
PC Card slot
Microphone jack
Speaker/Headphone jack
3 Universal Serial Bus (USB) port
RJ11 Modem port
RJ45 Ethernet port
IEEE 1394 port
SD Card slot

Display

Intel 855GME Internal Graphic Controller
Video Memory: 64MB (Using Dynamic Memory Allocation Technology)

Sound

ANALOG DEVICES AC'97 SoundMAX Codec (AD1981B)
Built-in Stereo Speaker

LCD

12.1" : XGA (1024X768) TFT Color LCD

Modem

QCOM MD560LMI (MDC Card)
RJ11 Telephone connector.

Blue Tooth + Modem

AMBIT T60M665 (BMDC)

LAN

3COM 3c920
RJ45 Ethernet connector

Power specification



AC Adapter (Free Voltage)

Power capacity: 65W

Input: AC 100 ~ 240V, 1.6A, 50 ~ 60Hz

Output: DC 18.5V, 3.5A

Note: Use the correct adapter for your computer.

Battery Pack (Li-Ion)

DC 11.1V, 3600 mAh / 3800 mAh (6-cell)

Charging time

Less than 3 hours with the power off in room temperature (9.6 ~ 40 °C/ 49.28 ~ 104 °F)

More than 16 hours with the power off in low temperature (0 ~ 9.6 °C/ 32 ~ 49.28 °F)

Note: The battery cannot be charged below 0 degrees C (32 °F).

The temperature indicated above is the temperature inside the battery pack; the actual temperature may be different.

Battery Life

More than 5hours (Battery Mark(TM) V4.0.1)

The life time may different from the system configuration.

Backup (standby) battery

RTC battery Ni-MH Coin 3V 60mm

Recommended battery: CR2032 manufactured by Sony, or equivalent type.

Operating environment



Operating

10 ~ 35 °C(50 ~ 95 °F), 20 ~ 80% relative humidity

Non-operating

-10 ~ 60 °C(14 ~ 140 °F), 10 ~ 80% relative humidity

Acknowledging Special Precautions and the FCC Industry Canada Notice

Cautions

Modifications not expressly approved by the party responsible for compliance could void the user's authority to operate the equipment.

FCC compliance Information

This device complies with part 15 of FCC Rules.

Operation is subject to the following two conditions:

1. This device may not cause harmful interference, and
2. This device must accept any interference received.

Including interference that may cause undesired operation.

Information to User

This equipment has been tested and found to comply with the limits for a Class B digital device, Pursuant to part 15 of the FCC Rules. These limits are designed to provide reasonable protection against harmful interference in a residential installation.

This equipment generates, uses and can radiate radio Frequency energy and, if not installed and used in accordance with the instructions, may cause harmful interference to radio communications.

However, there is no guarantee that interference will not occur in a particular installation. If this equipment does cause harmful interference to radio or television reception, which can be determined by turning the equipment off and on, the user is encouraged to try to correct the interference by one or more of the following measures:

- Reorient or relocate the receiving antenna.
- Increase the separation between the equipment and receiver
- Connect the equipment into an outlet on a circuit different from that to which the receiver is connected.

Consult the dealer or an experienced radio/TV technician for help.