

#### Part 15.21 statement

" Change or Modifications that are not expressly approved by the manufacturer could void the user's authority to operate the equipment. "

# OD811

## User Guide

#### Part 15.105 statement

This equipment has been tested and found to comply with the limits for a class B digital device, pursuant to Part 15 of the FCC Rules.

These limits are designed to provide reasonable protection against harmful interference in a residential installation. This equipment generates uses and can radiate radio frequency energy and, if not installed and used in accordance with the instructions, may cause harmful interference to radio communications. However, there is no guarantee that interference will not occur in a particular installation. If this equipment does cause harmful interference or television reception, which can be determined by turning the equipment off and on, the user is encouraged to try to correct the interference by one or more of the following measures:

- Reorient or relocate the receiving antenna.
- Increase the separation between the equipment and receiver.
- Connect the equipment into an outlet on a circuit different from that to which the receiver is connected.
- Consult the dealer or an experienced radio/TV technician for help.

#### Part 15 Class B Compliance

This device and its accessories comply with part15 of FCC rules and ICES-003 Class B digital apparatus requirements for Industry Canada.

Operation is subject to the following two conditions:

- (1) This device & its accessories may not cause harmful interference.
- (2) This device & its accessories must accept any interference received, including interference that may cause undesired operation.

#### Body-worn Operation

This Mobile Broadband USB Modem is approved for use in normal size laptop computers only (typically with 12" or larger display screens).To comply with FCC RF exposure requirements, this modem should not be used in configurations that cannot maintain at least 5mm (approximately 0.2 inches) from your body.Also, when using the USB extension cable, place the USB modem away from your body or any other transmitter of the laptop or PC.This USB modem has been tested for compliance with FCC/IC RF exposure limits in the laptop computers configurations with horizontal and vertical USB slots and can be used in laptop computers with substantially similar physical dimensions, construction and electrical and RF characteristics.When using this USB modem in your computer, it must not be co-located or simultaneously transmit with any other radio (for example, Bluetooth or WiFi radios) in the computer.

## Getting Started

### Insert the SIM Card

- Open the cover by pushing it.
- Insert the SIM card into SIM slot in the direction indicated on the slot. Make sure to push the SIM card completely into slot until it's fully inserted.
- Close the cover and push up until it clicks into place.

## System Requirement

### 1. Hardware

- **CPU:** Pentium III or higher
- **Memory:** 512MB or more
- **Graphic Adaptor:** 800X600 or higher
- **Hard disk:** 100MB or more in free disk space

### 2. Software

- **Windows OS:** XP, Vista 32/64bit, 7 32/64bit
- **Mac OS:** X 10.4.11 or higher

## Installing LG Connection Manager for Windows OS

1. Connect USB modem to PC, then the LG Connection Manager installer is run and display the Setup screen.
2. In the Setup screen, click "Next" to proceed with the next step.
3. Agree "the terms of the license agreement" and click "Next".
4. After LG Connection Manager setup is finished, click "Finish".
5. LG Connection Manager is run automatically.
6. Wait until Launcher displays operator's name on it. It may take about 1 minute.

OD811 | User Guide

## Installing LG Connection Manager for Mac OS

1. Connect USB modem to Mac computer.
2. Disc image named "LGE Modem" is shown on the desktop.
3. Double click disc image or browse drive through Finder.
4. Double click installer file "LG connection manager installer.mpkg".
5. Follow install process.

## Removing LG Connection Manager

### 1. Windows OS

Click start > program > LG Connection Manager > Uninstall LG Connection Manager

### 2. Mac OS

- 1) Go to Application
- 2) Delete "LG connection manager"

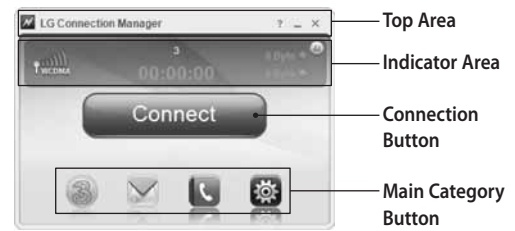
OD811 | User Guide

## Introducing and Getting Started with LG Connection Manager

LG Connection Manager is easy-to-use software that enables you to access the internet without separate wiring. And it also helps you add/edit/remove items of the address book, send/receive or save/remove SMS in your PC.

- LG Connection Manager is launched automatically if the USB modem is properly connected to PC. You can also run it by double-clicking icon on the desktop.
- APN is set automatically according to your subscribed operator and you can see operator's name on Launcher.
- If operator's name is not displayed properly, go to section "LG Connection Manager APN setting" in the below.

## LG Connection Manager Features – Launcher



### Top Area

- About button – You can check S/W version, H/W version, IMEI, IMSI, MSISDN, and SMSC number.
- Help file open
- Minimize the program window – displays in the task bar
- Exit the program

OD811 | User Guide

- Roaming status – indicates it is in roaming service.
- Connection time – displays the time point it is connected to the Internet.
- Connects to the Internet and displays the packet size/Internet speed.

### Connection button area

- Connect / Disconnect button provided.

### Main Category Button Area

Button	Description
	<b>[Provider's Logo]</b> Move to the provider's logo and directed page.
	<b>[SMS]</b> Launches and operates in the SMS program.
	<b>[CONTACT]</b> Launches and operates in the Address Book program.
	<b>[Settings]</b> Button for configuring the settings of LG Connection Manager.

## LG Connection Manager Features – Internet Access

1. Click "Connect" button on the Launcher to connect to the internet. When the connection is established successfully, it is ready to use internet service.
2. The following table informs you of the modem status and actions for a possible network problem.

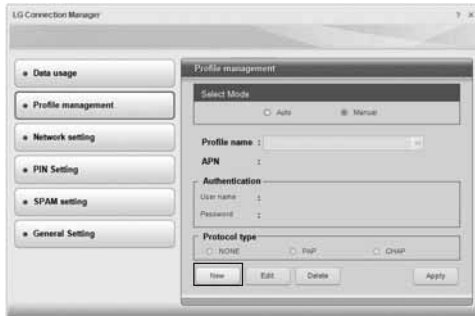
Button	Description
Modem is not connected.	<ul style="list-style-type: none"> <li>• Currently host driver is being loaded. Wait for a while. It may take about 1minute after first installation.</li> <li>• Currently modem is not connected to you PC. Check if a modem is connected to your PC properly.</li> </ul>
Checking the SIM card status.	Currently checking the SIM card status. Normally, it takes less than 10 seconds.
Searching network	Currently searching for a network. It may take longer in a weak reception area.

OD811 | User Guide

## LG Connection Manager APN Setting

APN is set automatically according to inserted SIM card. You don't need to set APN manually. If APN is not set automatically, you can set APN manually.

1. Select "Settings" button on the Main category Button Area.
2. Select "Profile management".
3. Select "Manual".
4. Select "New".



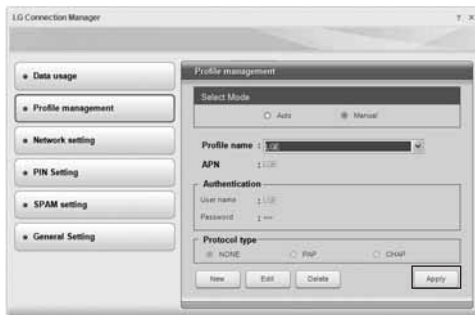
5. Type "Profile name", "APN", "User name", "Password", "Protocol type" and save.



- APN information must be provided by operator.
- Profile name can be determined by user.

OD811 | User Guide

6. Saved profile is shown in "Profile name" field. If there are multiple profiles, you can select one among them.
7. Click "Apply" to apply selected profile.



OD811 | User Guide