



LG Pocket Photo

Simple manual/ 简短说明

For more details, please refer to the Owner's Manual at LG Pocket Photo App or <http://popoguide.lge.com>.

MODEL : PC389P, PC389S



Android™



Fun Application



Bluetooth®

www.lg.com

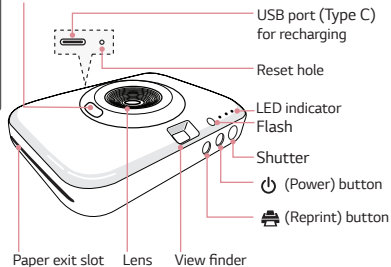


* M F L 6 9 5 8 1 0 0 4 *

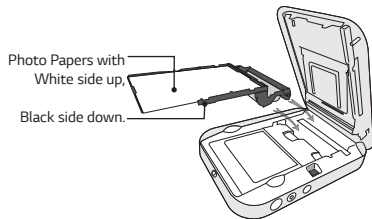
STEP 1 Getting Started

1. Basic Operation

Lens cover switch



- ❗ This device uses a built-in battery. Before using it, fully charge the battery using a Smart phone USB cable (USB Type C) or adapter.
- ❗ As shown in the picture on the right, Slide the cover button sideways to open the bottom cover and insert the front of the cartridge first.



- ❗ Be sure to
- ### 2. Photo Cartridge
- ❗ photo cartridge is not supplied.

- ❗ Use exclusive Cartridge for LG Pocket Photo.
Otherwise, the print quality cannot be guaranteed, and it may cause damage of Pocket Photo.

Note on Photo Cartridge

Use exclusive Cartridge for LG Pocket Photo.

- Using photo cartridge from other company may result in malfunction, paper jam or low quality.
- Unpack the cartridge in dust free place and immediately put it into the pocket photo. Handle with care not to get dirt on, when you touch the cartridge.
- When inserting photo cartridge, do not touch colored ribbon or paper area.
- Do not damage or bend the cartridge.
- Do not expose to direct sunlight or moisture. Avoid the pocket photo from over heating.

- Do not disassemble or modify the photo cartridge.
- Once unpacked, the cartridge may begin to curl up or discolor after a period of time. It is recommended to use them as soon as possible.
- Using soiled cartridge may result in malfunction.
- Ensure to use the cartridge within its valid date.

STEP 2 Installing App

Search for "LG Pocket Photo" from Play Store (Android market) / App Store (iPhone).

STEP 3 Pairing Bluetooth

1. Turn on the Pocket Photo device.
2. Search for the device to pair through **Bluetooth**.
ex) LG PC389 (XX : XX)
3. When you find the device, touch the model name of Pocket Photo on the screen.

In case of iPhone/iPad, the last paired iPhone/iPad is paired to Pocket Photo automatically when you turn on Pocket Photo if the Bluetooth on your iPhone/iPad is on.


< Android Phone >



< iPhone >



STEP 4-1 Printing Photo

1. After pairing, run LG Pocket Photo App on smart phone.
2. Select a photo to print, and touch [].

If the photo cartridge is in the device, the selected image will be printed after optimizing the image's quality.

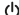

The printed image may differ from the original image due to the printing method (Dye-sublimation method).

Note on the print

- Use the latest App of LG Pocket Photo (when printing a photo, it optimizes the image.)
- Do not pull paper out by force during printing.
- Do not open the cover during printing or do not print the photo, when cover is opened. It may cause damage of Pocket Photo.
- If the device is vibrated or given shock, the quality of the printed photo may be reduced.
- During printing, the photo paper repeatedly comes out and in about 5 times through the paper exit slot. Please wait and do not pull out the photo by hand until it is finally released.

STEP 4-2 Taking photos and instant printing


❗ You can take photos and print them instantly without using app

1. Press  (power) button to turn on.
2. Open the lens cover by lowering the lens cover switch.
3. Hold the Pocket photo, confirm the desired composition of the final image by using view finder.
4. To take a photo, press Shutter button for 1-2 seconds.
5. If you want to print a photo you took again, press [] button.

Note on taking photo

- If the lens cover is closed, you can't take a photo.
- Reprint function is not activate when the Pocket photo is turned off or reset.

STEP 6 See "User manual" for details

1. Run LG Pocket Photo App on the smartphone.
2. Touch the setting menu [] → [User Guide] to see user manual for details.

※ This product must always be operated DC 5 V. Certified/Listed Adaptor which comply with LPS.

Symptom	Cause / Solution
The paper jammed before printing.	Turn the device off and on again then paper is ejected automatically.
	At first remove the photo cartridge, and then gently pull the remaining photo paper out of the paper insertion slot. At this time, be careful not to touch the inside of the paper loading slot.
The printed photo has lines.	Open the cover. Then insert the photo cartridge again.

Quality of printed photo is too low.	In case you edit an image using [🔍] menu in the App, the quality of the printed photo may be reduced.
	Turn off the Pocket photo and insert the new photo cartridge.
Above solutions do not work.	Press Reset hole with a pointed thing like mechanical pencil to initialize.

※ All other product and brand names are trademarks or registered trademarks of their respective owners.

Hong Kong

Declaration of Conformity



Hereby, LG Electronics European Shared Service Center B.V., declares that this POCKET PHOTO is compliant with the essential requirements and other relevant provisions of Directive **2014/53 EU**. The complete Declaration of Conformity may be requested through the following postal address:

LG Electronics European Shared Service Center B.V.
Krijgsman 1
1186 DM Amstelveen
The Netherlands

or can be requested at our dedicated DoC website:

<http://www.lg.com/global/support/cedoc/cedoc#>

This device is a 2.4 GHz wideband transmission system, intended for use in all EU member states and EFTA countries.

IMPORTANT SAFETY NOTICE

The cord grip for the plug fitted to this product is built into the existing power cord as supplied. If, for any reason you need to shorten the cord.

DO NOT RE-USE THE PLUG.

A new plug must be used to ensure your continued safety by securing the plug to the power cord in accordance with Plug & Socket Regulations 1994.

FEDERAL COMMUNICATIONS COMMISSION
INTERFERENCE STATEMENT

This equipment has been tested and found to comply with the limits for a Class B digital device, pursuant to Part 15 of the FCC Rules. These limits are designed to provide reasonable protection against harmful interference in a residential installation. This equipment generates, uses and can radiate radio frequency energy and, if not installed and used in accordance with the instructions, may cause harmful interference to radio communications. However, there is no guarantee that interference will not occur in a particular installation. If this equipment does cause harmful interference to radio or television reception, which can be determined by turning the equipment off and on, the user is encouraged to try to correct the interference by one or more of the following measures:

- Reorient or relocate the receiving antenna.
- Increase the separation between the equipment and receiver.
- Connect the equipment into an outlet on a circuit different from that to which the receiver is connected.
- Consult the dealer or an experienced radio/TV technician for help.

CAUTION:

To assure continued FCC compliance:

1. Any changes or modifications not expressly approved by the grantee of this device could void the user's authority to operate the equipment.

Exposure to Radio Frequency Radiation:

This equipment complies with FCC radiation exposure limits set forth for an uncontrolled environment. This transmitter must not be co-located or operating in conjunction with any other antenna or transmitter.

FCC Label Compliance Statement:

This device complies with Part 15 of the FCC Rules. Operation is subject to the following two conditions:

- (1) this device may not cause harmful interference, and
- (2) this device must accept any interference received, including interference that may cause undesired operation.

IC Warning Statement

- English Warning Statement:

"This device complies with Industry Canada licence-exempt RSS standard(s). Operation is subject to the following two conditions: (1) this device may not cause interference, and (2) this device must accept any interference, including interference that may cause undesired operation of the device."

- French Warning Statement:

"Le présent appareil est conforme aux CNR d'Industrie Canada applicables aux appareils radio exempts de licence. L'exploitation est autorisée aux deux conditions suivantes : (1) l'appareil ne doit pas produire de brouillage, et (2) l'utilisateur de l'appareil doit accepter tout brouillage radioélectrique subi, même si le brouillage est susceptible d'en compromettre le fonctionnement."

