

<b>User's guide</b> .....	<b>7</b>
<b>Important Safety Instructions</b> .....	<b>8</b>
Selecting a place to work .....	8
Using the battery pack .....	9
Replacing and disposing of the backup (standby) battery .....	10
Connecting to an AC power source .....	11
Using the computer .....	12
Using the computer .....	13
Upgrading the computer .....	15
Upgrading the computer .....	15
Carrying and storing the computer .....	16
Preventing data lose (handling hard disk drives) .....	17
Ergonomic information .....	18
<b>For Australian Users</b> .....	<b>19</b>
<b>Laser compliance statement</b> .....	<b>20</b>
<b>Overview</b> .....	<b>21</b>
Package contents .....	21
Components .....	22

Front view .....	22
Rear view .....	23
Left view .....	23
Right view .....	24
Status indicators .....	24
Using LCD panel .....	26
Opening LCD Panel .....	26
Using Tablet mode.....	26
Using notebook mode.....	29
Using Screen rotation.....	30
Using Touch panel .....	32
Using Pen (attached pen in tilt / offered extra pen) .....	33
Exchange the pen point (offered Full size digital pen).....	37
<b>Basics .....</b>	<b>39</b>
Using the battery pack .....	39
Using the AC adapter .....	43
Connecting the AC adapter to an AC outlet (100~240V).....	43
Connecting AC adapter to the power device.....	43
Opening and positioning the LCD panel .....	44
Power On .....	44
Turning the power on and off .....	44
Turning on the computer .....	44
Turning off the computer .....	47
Using Windows XP .....	49
Overview.....	49
Using Tablet PC.....	50
Overview.....	50

Using Tablet PC Tutorials .....	51
Tablet PC Tutorials.....	51
Using Tablet PC application programs .....	52
Sticky Notes .....	52
Windows Journals .....	52
Help and Support .....	53
Windows XP desktop .....	54
Start menu .....	55
Changing the look of the Start menu .....	55
Changing the pinned items in the Start menu .....	55
Showing the recently used items on the Start menu .....	55
Control Panel .....	56
Setting up Local Area Network (LAN) connections.....	57
Using Wireless LAN .....	59
Connecting and using the wireless network .....	59
Using IP Operator .....	60
Changing the Themes and Desktop background .....	61
Using the Windows Classic Theme.....	61
Using a different theme .....	62
Changing the desktop background .....	62
Setting the Screen Saver .....	63
Taskbar.....	63
Desktop cleanup.....	63
Using the Power Options.....	64
Power Options Properties.....	64
Power Options Properties.....	65
Advanced tab.....	67
Power Meter .....	67
System Hibernation .....	68
Using ez menu .....	68
Using pen to input (attached pen in tilt / offered extra pen).....	70

Using pen to input (When inputting on notepad) .....	70
Defining font size.....	71
Attaching external devices .....	72
Attaching a USB device .....	72
Attaching an external monitor .....	72
Attaching an IEEE 1394 device (Option).....	73
Using Battery Miser.....	73
<b>Input/Output.....</b>	<b>75</b>
Using the keyboard.....	75
Component.....	75
Modifier and special function keys .....	77
Hot keys .....	78
Using the touch pad (Mouse).....	80
Moving the pointer on the screen .....	81
Making the selection (Click) .....	81
Double-click (Run).....	82
Drag and drop.....	83
Using the scroll up/down function .....	85
<b>System Setup.....</b>	<b>86</b>
Starting the system setup.....	86
Keys used in the system setup .....	86
Setting a password .....	87
Setting a supervisor password .....	88
Setting a user password .....	89
Changing or removing the password.....	90
Recovering the factory default settings .....	91

System Recovery.....	92
Using Full Recovery .....	92
 Driver Installation.....	 96
Installing memory .....	97
About memory .....	97
Before installing memory .....	97
Purchasing memory .....	98
Installing memory .....	98
 Inserting SD Memory Card.....	 101
Removing SD Memory Card.....	101
 <b>Features.....</b>	 <b>102</b>
Model .....	102
Processor .....	102
Memory .....	102
BIOS ROM .....	102
Storage devices.....	102
External I/O Interfaces.....	103
Display .....	103
Sound.....	103
LCD.....	103
Modem.....	103
LAN .....	103
 <b>Power specification.....</b>	 <b>104</b>
AC Adapter (Free Voltage) .....	104
Battery Pack (Li-Ion).....	104
Charging time .....	104
Battery Life.....	104
Backup (standby) battery .....	104
 <b>Operating environment.....</b>	 <b>105</b>
Operating .....	105

Non-operating .....105

Thank you for using the LG product.

LG has manufactured and tested this product to provide you with a reliable computing environment.

Please read this manual carefully before using the computer.

The following signs call attention to features and operations that may be dangerous to the user. Follow the instruction closely to reduce the risk of physical harm or damage to the equipment.



**Danger:** Not following the instruction will result in immediate death or serious injury.



**Warning:** Not following the instruction could result in death or serious injury.



**Caution:** Not following the instruction could result in minor or moderate injury and/or damage to the product.

Microsoft, MS, MS-DOS, and Windows are trademarks of Microsoft Corporation in the United States and/or other countries.



**LG** is a trademark of LG.

## **Copyright 2003 LG Electronics, Inc., DigitalMate Co., Ltd.**

Information in this manual may include technical inaccuracies or typographical errors. Images in this manual are for illustrative purposes only and may be different from the actual product.

LG reserves the rights to make improvements and/or changes to the product without notice.

Reproducing any or all of the information contained in this publication without written permission is prohibited.

Your computer complies with the radio frequency and safety standards of any country or region in which it has been approved for wireless use.

# Important Safety Instructions



These safety instructions will ensure many years of safe enjoyment from the product. Set up your computer on a flat, stable surface. (LG is not responsible for the problems and damages caused by incorrect use of the computer in an unsafe environment.)

## Selecting a place to work



### **Warning**

Do not operate your computer near water; for example, in a bathroom or near a

The computer may not function correctly, and there is the risk of electric shock. Operate the computer within a temperature range of 50 to 95 degrees F (10 to 35 degrees C) and 20 to 80% of relative humidity.

Safely dispose of the packing materials, such as desiccant and plastic bags. Children may swallow desiccant or suffocate from plastic bags.



### **Caution**

Keep your computing environment clean and free of dust. There is a risk of dysfunction to the computer.

Keep your computer away from electromagnetic fields. Exposure to the electromagnetic field may result in loss of data in the hard disk drive and/or damage to the LCD.



Do not block the fan louvers and leave enough space around the computer for ventilation. The computer may overheat and result in fire or injuries.

## Using the battery pack



### Warning

Use only a battery pack recommended by LG.  
Using a battery pack of a different type may result in explosion.

Keep metallic objects, such as keys and clips, away from the battery pack.  
Objects that conduct electricity can short-circuit the battery pack and result in fire and/or injuries.

Keep the battery pack away from heat.  
There is a risk of explosion or fire.

Do not short-circuit battery terminals.  
There is a risk of explosion.

Do not subject the battery pack to temperatures above 140 degrees F (60 degrees C).  
There is a risk of explosion or fire.

Keep the battery pack away from children and/or pet.  
There is a risk of injury and damage to the battery pack.

Do not put the battery pack in the water.  
There is a risk of fire or damage to the battery pack.  
Be cautious when handling the keen part of the battery pack hook.  
It may hurt you.

Lock the Notebook locker at the bottom surface.  
There is a risk of battery damage.

## Replacing and disposing of the backup (standby) battery



### Warning

If the backup battery is incorrectly replace, there is danger of explosion.

The lithium battery contains lithium and can explode if it is not properly handled or disposed of.

Replace only with a battery of the same type.

باطری ذخیره (یدکی) را با نوع درست آن عوض کنید.  
خطر انفجار وجود دارد.  
باطری های ذخیره های (یدکی) استفاده شده را بر اساس دستور العمل داخلی مصرف کنید.  
مصرف باطریهای نادرست منجر به انفجار یا آتش سوزی میشود.

غير البطارية البديلة على الطراز المناسب.  
وهناك احتمال الانفجار.  
تخلص من البطاريات البديلة المستعملة حسب القوانين والأنظمة المحلية.  
البطاريات المتخلص منها بصورة غير مناسبة قد تؤدي الى انفجار او احتراق.

## Connecting to an AC power source



### Warning

Do not use loose or damaged power plugs.  
There is a risk of electric shock or fire.

Use properly grounded outlet.  
Connecting the computer to an outlet without proper grounding may result in electric shock and damages to your computer.

Do not touch or grab the power plug with wet hands.  
There is a risk of electric shock.

Hold the plug body when removing the power cord from an outlet.  
There is a risk of fire and damages to the computer.

Use your computer at the proper voltage/current level indicated.  
Supplying improper levels of voltage/current may result in electric shock, fire, and/or damage to the computer.

If you hear a noise from the power cord or outlet, unplug the power cord immediately, and contact the customer service for help.  
There is a risk of fire or electric shock.

Make sure the power plug fits snugly into the electrical outlet.  
Loose fit may result in fire.

Do not bend or place a heavy object on top of the power cord. Keep the children and pets from damaging the power cord.  
Damaged power cord may result in electric shock or fire.

Keep the power cord and plug clean and free of dust.  
There is a risk of fire.

If an object or liquid enters the computer or an adapter, remove power cord, battery, and any other cables from the computer, and contact the customer service for help.

There is a risk of an electric shock, fire, or damage to the computer.

Before cleaning the computer, disconnect the power cord, battery, and any other cables from the computer.

There is a risk of electric shock or damage to the computer.

## Using the computer



### Warning

For cleaning your computer, use mild detergent or computer cleaning products.

Using the computer without completely drying it may result in electric shock or fire.

During a lightning storm, disconnect the power cord, telephone line, and LAN cable from the computer.

There is a risk of electric shock or fire.

Do not place water, chemicals, or liquid of any kind on the computer.

Liquid of any kind entering inside the computer may result in an electric shock, fire, or damage to the computer.

Do not connect the modem directly to a multi-line telephone.

There is a risk of fire or damage to the computer.

If you drop your computer, remove the power cord and battery pack, and then contact the customer service for check up.

There is a risk of electric shock or fire.

Do not place a burning candle or cigarette on the computer.

There is a risk of fire.

If you see or smell smoke from the computer or adapter, turn off the computer, remove the power cord, and then contact the customer service for help.

There is a risk of fire.

The LCD monitor's fluorescent lamp include hydrargyrum.

Avoid direct contact with liquid from the broken LCD. If it spills into eyes or the other parts of your body, wash it out several times with clean water. If you feel something different, contact a doctor or a health administrator immediately.

## Using the computer



### Caution

Do not place an object, such as a pen or clip, on the keyboard.

If you close the LCD cover with an object on the keyboard, you may damage or break the LCD.

Do not touch or scratch the LCD with sharp objects.

The LCD may be damaged.

Be sure to turn off the computer before closing the LCD cover.

The computer may overheat, and be damaged or deformed.

Do not exert excessive pressure on the LCD.

LCD is made of glass, and an excessive force can break the LCD.

Follow the instructions in the user's guide.

There is a risk of damage to the computer.

Do not place objects into the PC Card slot.

There is the risk of electric shock or injury.

Upon completion of any service or repairs, ask service technician to perform safety checks.

Ignoring safety checks may result in electric shock or fire.

Use the Wireless LAN at least 5m away from a microwave oven or plasma lamp.

When using the Wireless LAN near a plasma lamp, use the channel 11, 12, or 13. the connection may be unavailable or slow.

Keep the computer away from heat. The computer may deform and there is the risk of fire.

When attaching an external device, make sure the connector from the device and the port on the computer are of the same type.  
There is a risk of damage to the computer.

Do not insert a damaged CD-ROM or floppy disk.  
There is a risk of damage to the computer.

## Upgrading the computer



### Warning

Before disassembling the computer for upgrading purposes, turn off the power

There is the risk of electric shock or fire. If you need to open the computer cover, contact the customer service for help.

Keep screws and other small parts away from children.

Children may choke on a screw or other small part. If a child swallows a small part, receive a medical care.

## Upgrading the computer



### Caution

Do not attempt to disassemble or modify the computer without consulting

There is a risk of electric shock.

Replace only with the parts approved by LG.

There is a risk of fire and damage to the computer.

Consult with the customer service before connecting and using the computer with any non-LG product.

There is a risk of damage to the computer.

## Carrying and storing the computer



### Caution

Before moving the computer, turn the power off and remove all the cables. You may trip over the loose cables and fall.

When traveling on an airplane, follow the instruction by flight attendant. Using the computer on an airplane may result in an airline accident.

Do not travel with LCD monitor open.

Do not expose your computer to the direct sunlight in a closed area such as inside a car.

Prolonged exposure to high temperatures may deform the computer and also result in fire.



## Preventing data lose (handling hard disk drives)



### Caution

Be cautious when handling the hard disk drive.

The hard disk drive is very delicate to any physical impact. Always make backups for your data. LG is not responsible for the data lose caused by users.

The data on the hard disk or the drive itself may be damaged in the following situations:

1. Exposure to a physical shock during the disassembling or installing process.
2. The computer is reset (rebooted), for example by power outage, while the hard disk drive is operating.
3. Exposure to virus.
4. The computer is turned off during operation.
5. Exposure to a physical shock while the hard disk drive is operating.

To prevent data lose due to hard disk drive damages, always backup your data. LG is not responsible for the lose of data.

## Ergonomic information



### Warning

Adjust the display position to avoid glare or reflections from overhead lighting.

The top of the display should be on or below the level of your eyes.

Keep your head and neck in an upright position.

Keep your forearms, wrists, and hands in a horizontal position.

Adjust your chair to keep your arms and hands in a comfortable position.

Using the computer in the same position for a prolonged period of time may cause discomfort to your body.

Take short frequent breaks from working with your computer. No more than 2 hours of computing per day is recommended.

Stretch periodically to reduce muscular discomfort.

Check the volume level

Check if the volume level is too high before using headphones.

Do not use the headphones for a prolonged period of time.



## **Warning**

For safety reasons, only connect equipment with a telecommunications compliance label. This includes customer equipment previously labelled or certified.

# Laser compliance statement



An optical storage drive (device), such as a CD-ROM, CD-RW, DVD-ROM drive, which can be installed in this unit is a laser product. The driver's classification label is on the surface of the drive as shown below.

CLASS 1 LASER PRODUCT  
LASER KLASSE 1  
LUOKAN 1 LASERLAITE  
APPAREIL A LASER DE CLASSE 1  
KLASS 1 LASER APPARAT

The drive is certified by the manufacturer to comply with the requirements of the Department of Health and Human Services 21 Code of Federal Regulations (DHHS 21 CFR) Subchapter J for Class I laser products at the date of manufacture.

In other countries, the drive is certified to conform to the requirements of IEC825 and EN60825 for Class 1 laser products.



**DANGER**

**Do not open the optical drive unit: no user adjustments or serviceable parts are inside. Use of controls, adjustments, or the performance of procedures other than those specified might result in hazardous radiation exposure.**

## Package contents

The following items are included in the package. Match the items on this list with the items in the box. Some items may look different from the pictures.



LT 20

**Note:** Make sure you have the correct AC adapter before connecting it to the computer.



Installation guide



power cord/AC adapter (65W) (Using offered cable)



Modem cable



Battery



Pen (offered Full size digital pen)

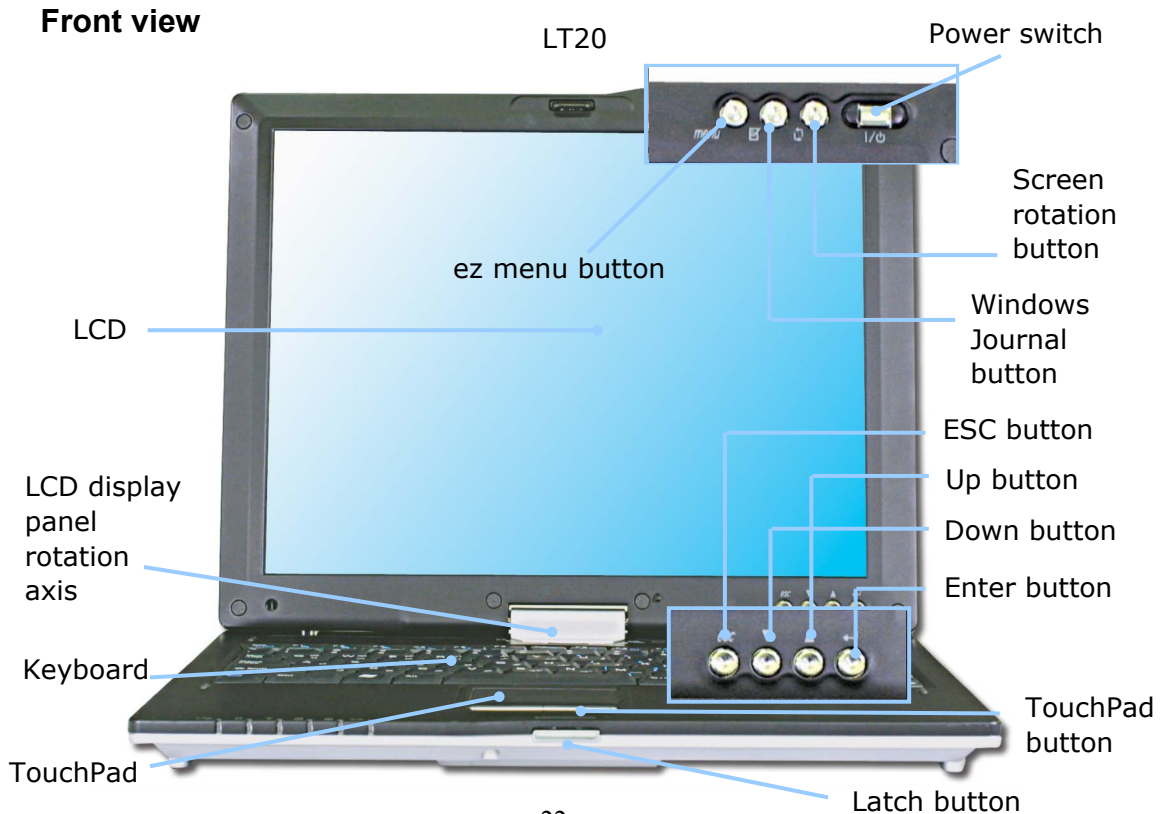


## Caution

When cleaning your computer, use cleaning products manufactured specifically for computing equipment. Using abrasive chemicals, such as paint thinner, benzene, or alcohol, may damage your computer.

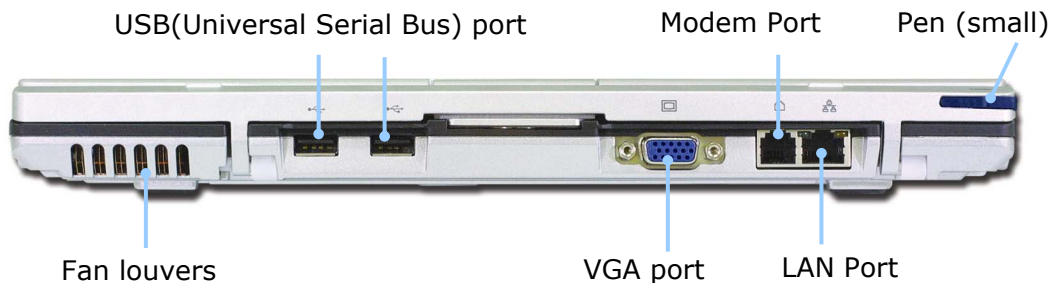
## Components

Learning the components and their functions helps you to use the computer more easily and thoroughly.

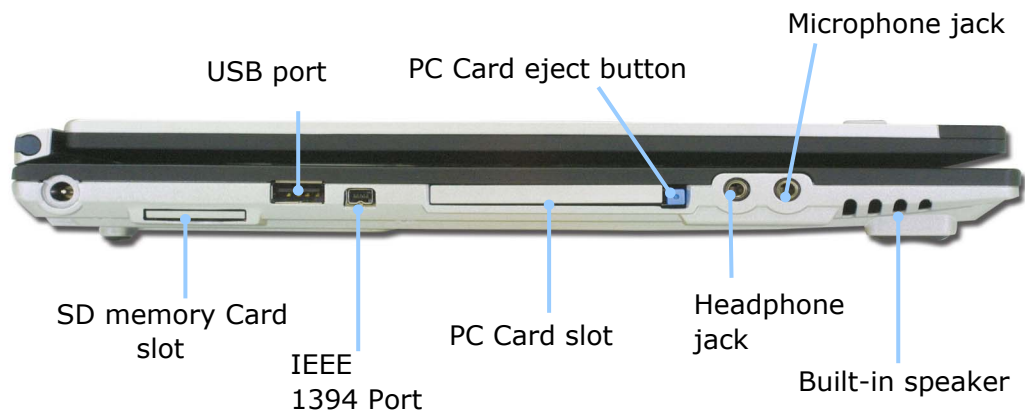


**Note:** ez menu button, Windows wordpad button, LCD rotation button, Power switch, Esc button, Up/Down button, and Enter button are coated for preventing static electricity purposes.

### Rear view



### Left view



## Right view



**Security key hole (Kensington Lock):** User can attach a separately purchased chain lock into the security keyhole and connect it to a fixed object to prevent a notebook theft.

## Status indicators

**Note:** Some models may look different from the picture below.





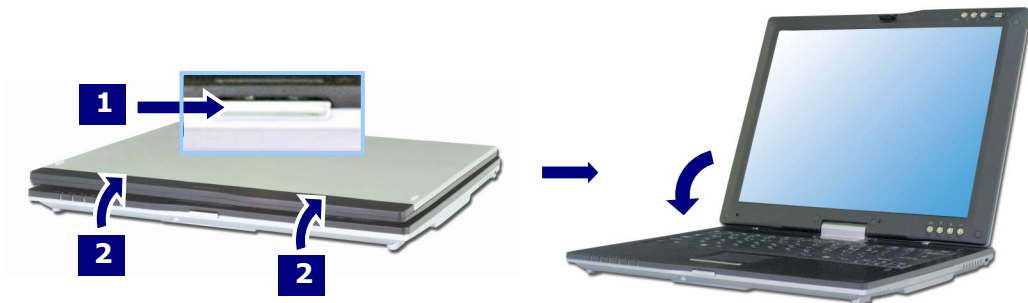
1. **Power:** Power status indicator indicates the following status of the computer.  
Green: The computer is turned on.  
Off: The computer is turned off or is in hibernation mode.  
Blinking: The computer is in standby mode.
2. **Drive in use:** Drive in use indicator lights up when data is being written to or read from the hard disk.
3. **Wireless activity indicator:** Wireless activity indicator indicates the following.  
Off: The wireless card does not have the power or RF is off.  
Blinking: The wireless client is not associated with the network. Slow blinking (3-4 seconds interval): the wireless card powered on and attempting to connect.  
Fast blinking: The wireless card transmitting and/or receiving data by the rate depending on blinking speed.
4. **Num lock:** Num lock indicator lights up when the combination of the Fn and Num lock key is pressed. When this indicator lights up, you can use the embedded numeric keys. (To use the numeric keys, you must enable the Internal Keypad setting under the Advanced menu in the BIOS Setup Utility)
5. **Caps lock:** Caps lock indicator lights up when the Caps lock key is pressed. When this indicator lights up, you can type capital letters without pressing the Shift key.
6. **Battery:** Battery status indicator indicates the following status of the battery.  
Off: The computer is not connected to an AC adapter and the battery is discharged.  
Amber (orange color): The computer is connected to an AC adapter and the battery is charged. (0% ~90%)  
Amber and Green (blinking) : The battery is nearly full charged (90~100%)  
Green: The computer is connected to an AC adapter and the battery is fully charged  
Red: There is some problem in the battery.  
Green blinking: The battery is fully discharged.  
Green blinking for three times: The battery is fully discharged / Pressing the power button when system is off

## Using LCD panel

LCD panel has the function of 180° rotation switching as tablet PC, and can be laid upward on the keyboard.

### Opening LCD Panel

Push the latch button in the direction of the arrow **1**, and open the display panel **2**. Adjust the slope of the display panel for comfortable viewing.



### Using Tablet mode

When using tablet mode, follow orders as below.

**1.** Open up LCD panel till the keyboard is 90°.





## Warning

Do not prevent fan louvers when using tablet mode.  
Internal temperature rise can be a risk of damage to the computer.

2. Push down the tilt at the back of computer as direction (white arrow).



## Warning

Do not make LCD rotate without pushing down the tilt.  
There is a risk of damage to the computer.

3. If LCD panel has 90° on the keyboard, rotate LCD as clock-wise to make an opposite side.

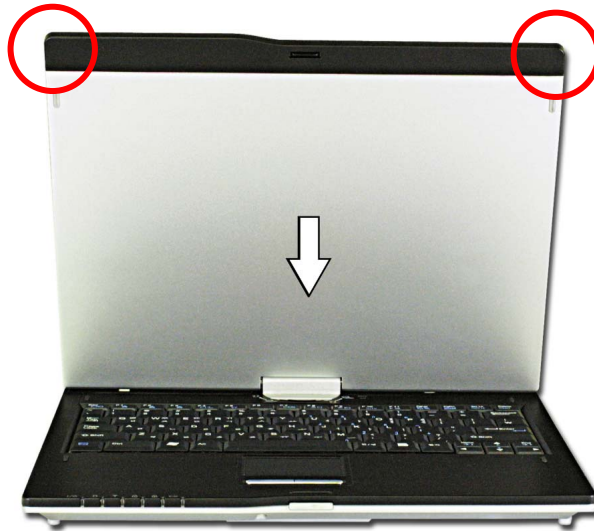




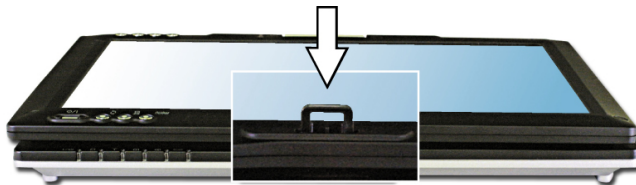
## Warning

Follow up defined orders.  
There is a risk of LCD Panel rotation axis crash when direction is different.

4. Pull down LCD panel to table PC body as direction (white arrow) with holding at the upper edge of LCD.



5. Fix the latch switch on LCD panel after folding as close to the keyboard completely.



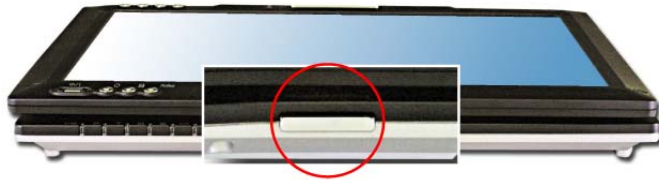


## Warning

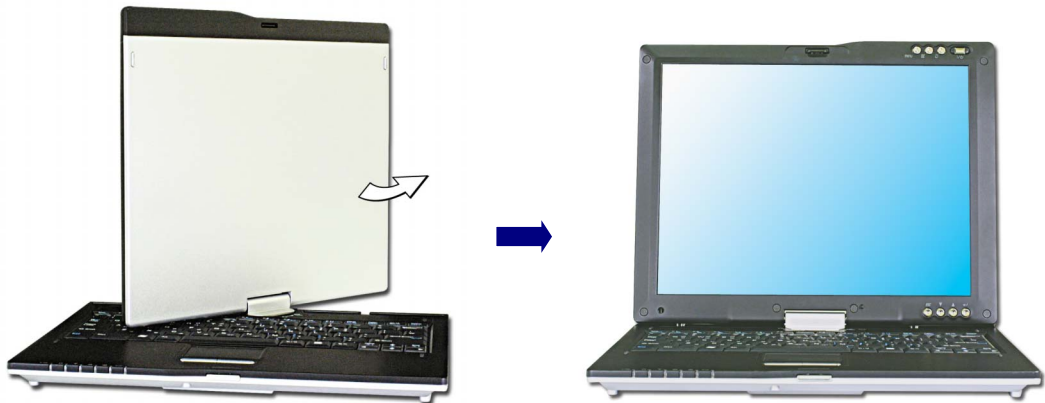
When using LCD as tablet mode, it can cause the button error.  
When using tablet mode, do the lock device before using the computer.

## Using notebook mode

1. If using notebook mode, lift up till LCD panel has 90° on the keyboard after pushing down the latch button.



2. If LCD has 90° on the keyboard, make it rotate as counter clock-wise.



3. Adjust the slope of the display panel for comfortable viewing after making a rotation completely.

### Using Screen rotation

Screen rotation is the function can modify the direction of Desktop screen as the unit of 90°. Push the [Screen rotation] button on LCD panel.

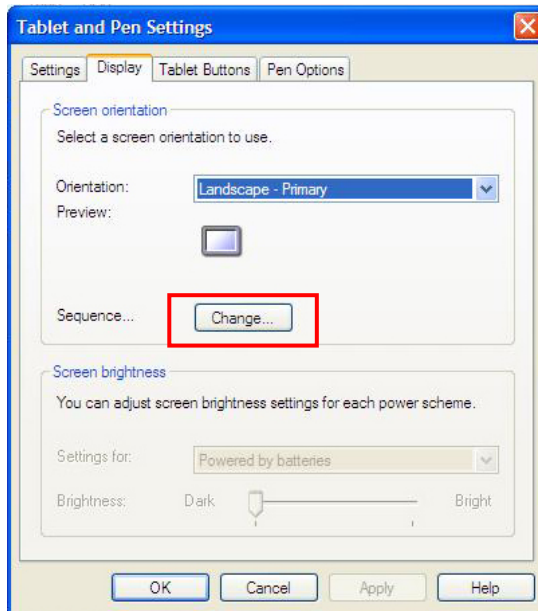


### Warning

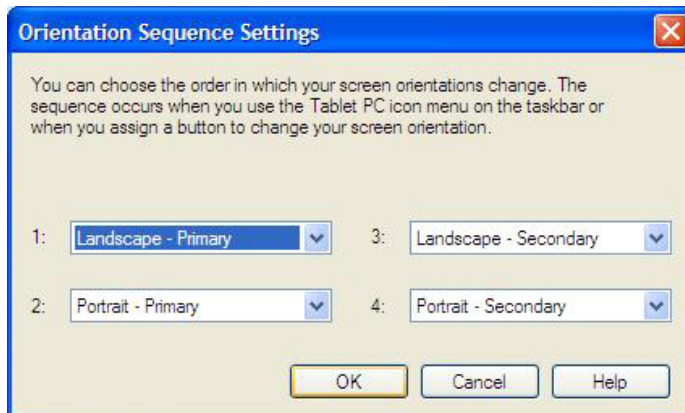
Do not modify screen resolution and color when using screen rotation.  
Put the screen back in its place before modifying screen resolution and color.  
When using screen rotation, application program (involved screen saver) might have problems as velocity display slow.  
When turning ON/OFF, screen rotation is not working.

### When modifying screen rotation button setting up

1. Go to [Control Panel]-[Tablet and Pen Settings]. Click [Change] at [Display tab].



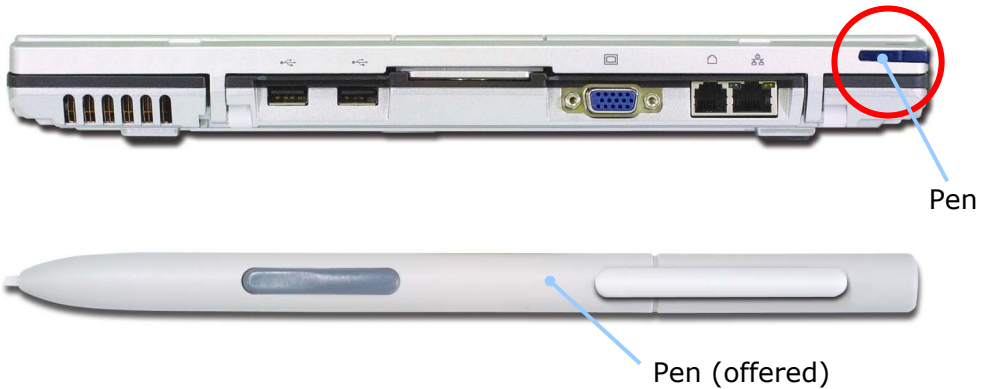
2. Modify the screen direction at **[Orientation Sequence Settings]**, and click **[OK]**.



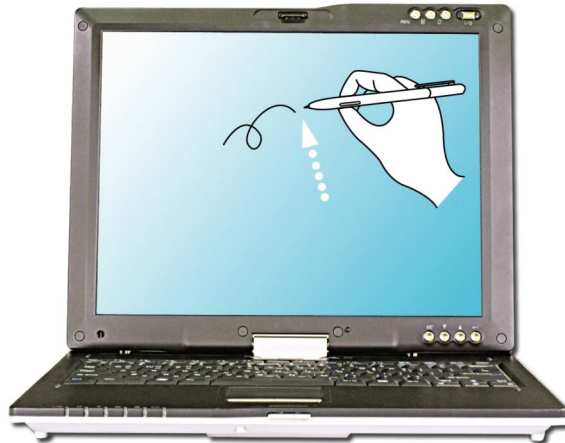
## Using Touch panel

It is comfortable pointing device for using mouse pointer directly on the screen. Electromagnetic induction system touch panel attached on LCD panel is operated by offering pen, or attached pen at tilt. It is easy and fast operation on the screen.

Use an attached pen at tilt, or offered pen from the product.



2. When moving a pen, pointer moves toward the direction of a pen.







## Warning

Using a pen involved at tablet PC is strongly recommended. If using a pen is not from the product, it can be seriously a risk of damage to the computer. Do not put a pen strength on the screen. It is a risk of damage to touch panel, or LCD.

Puddle phenomenon appears on LCD is caused by being pressed down from using a pen

This is not serious phenomenon because it is restored to the former state automatically.

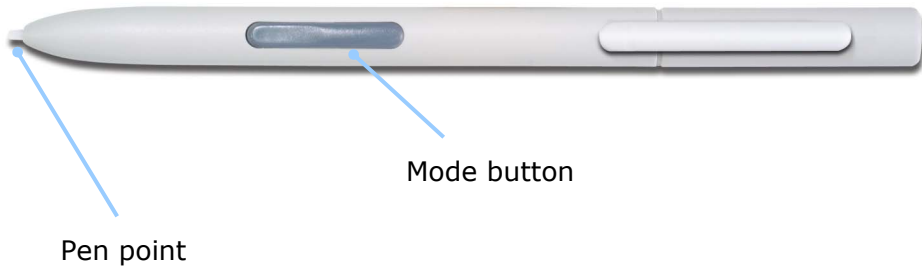
If the screen is distorted, or not restored to the former state, contact to Customer Service.

Put a pen back in its place after using.

## Using Pen (attached pen in tilt / offered extra pen)

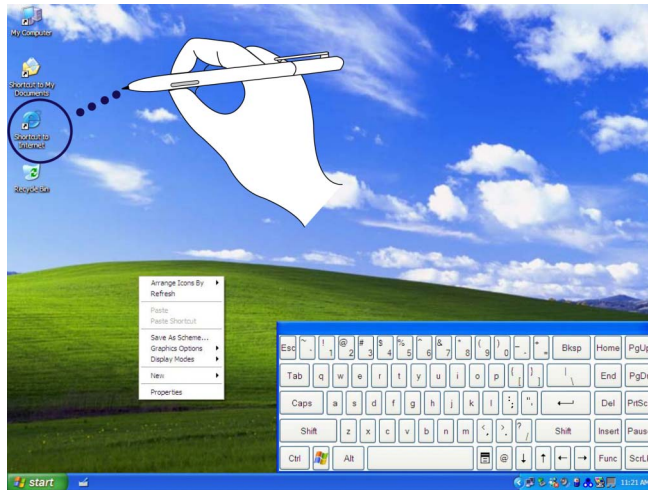
These pens have functions of controlling buttons, icons, and each application programs as using the mouse on the desktop.

When using the program has writing recognition, these are useful to write down on LCD directly, and treat as a drawing tool.



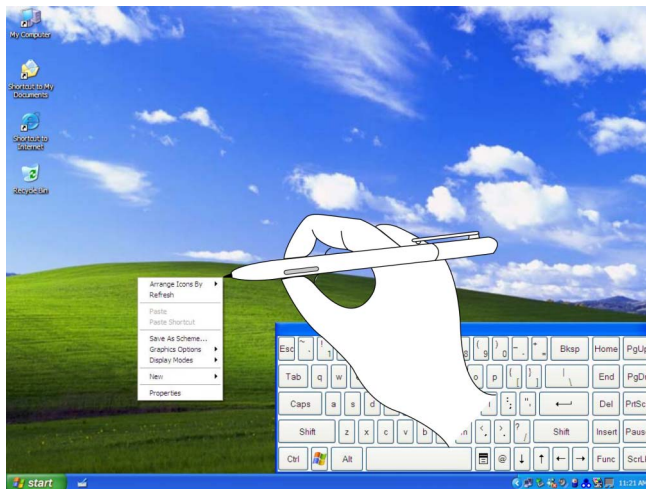
## Tab

Click one of icons on the desktop screen. The same function as left click.



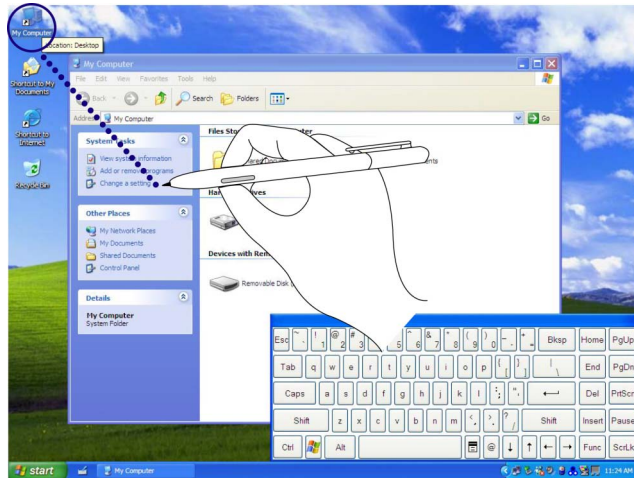
## Right tab

Tab the screen with pushing button on the pen. The same function as right click.



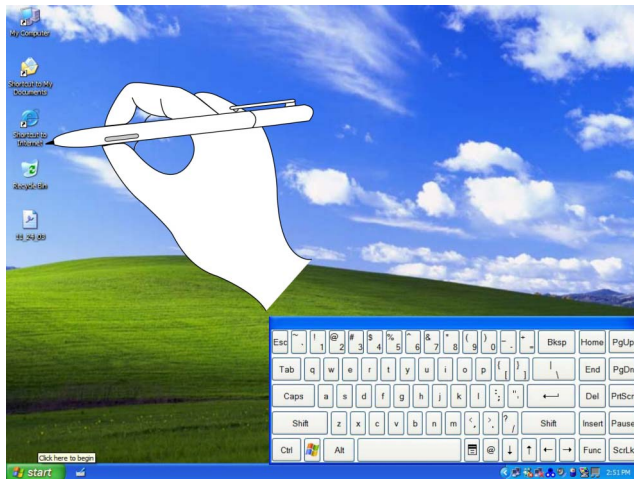
## Double tap

The same function as double click.



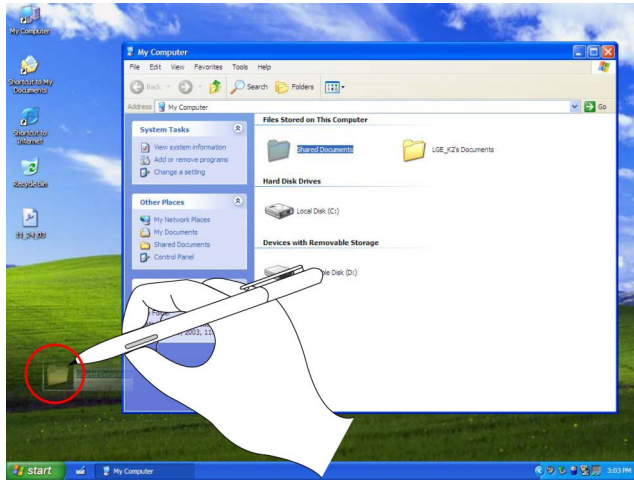
## Point

Touch on the screen lightly.



## Click and drag

Drag one of icons with pressing pen point on the screen.



### Note:

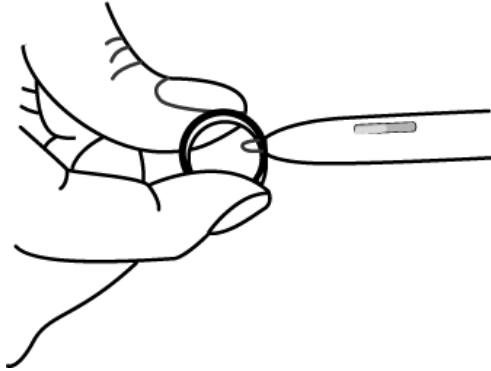
Pen can't be recognized when the pressure from it on the screen is not enough. Use attached pen in tilt and make control sure.

You must use attached pen when using the touch panel. Do not use your fingers and any other pen on it. There is the risk of the damage to the touch panel.

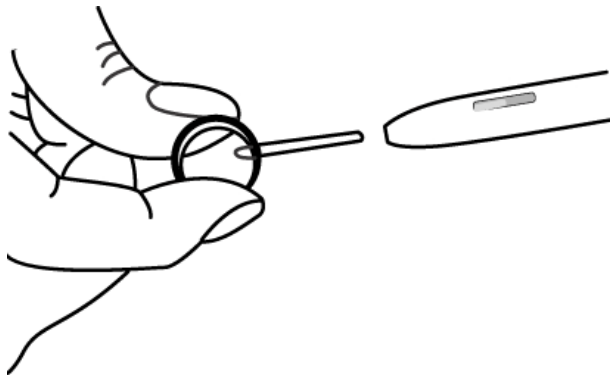
Do not press a pen excessively on the touch panel. There is the risk of the damage to the touch panel.

## Exchange the pen point (offered Full size digital pen)

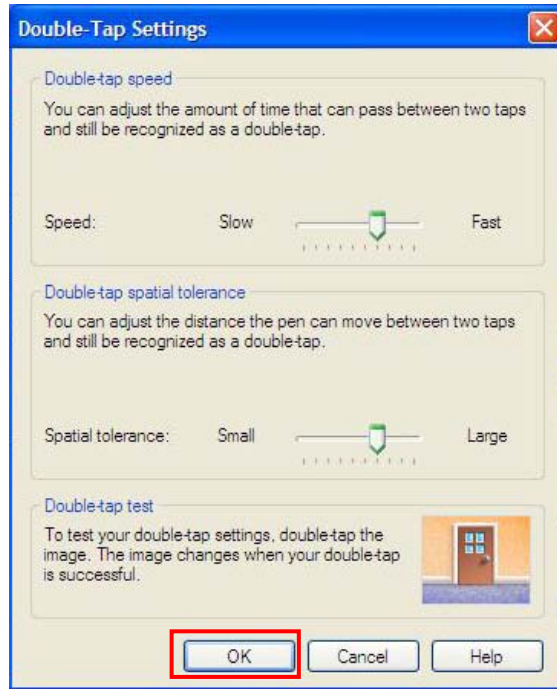
1. Use attached clip catching the pen point.



Pull out the pen point till it is separated from the pen.



Put new pen point into the pen after checking its direction.



**Note:**

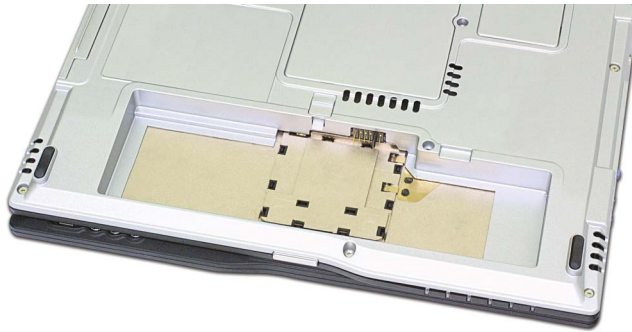
1. Go to [Control Panel]-[Tablet and Pen settings], and click [Setting] at [Pen option].
2. Click [OK] after adjustment user need on Double-Tap Settings.

This section describes how to use the basic features of your computer. Read this section before using the computer.

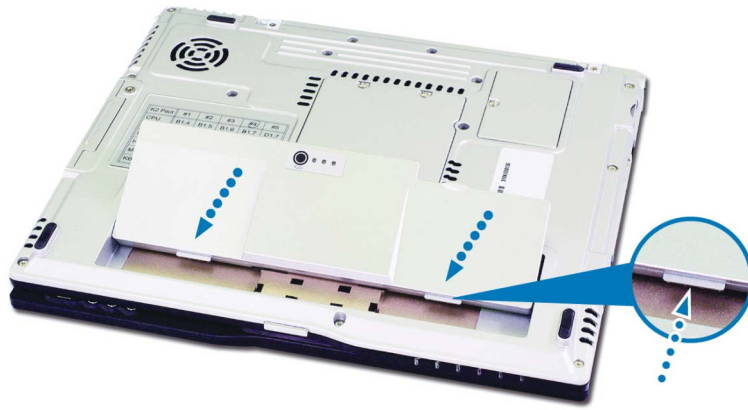
## Using the battery pack

The battery pack recommended fully charged before first use.

1. Turn the computer over so that the battery slot faces up.



2. Place the battery pack in the battery slot, and align the two protrusions on the battery pack with the two slits on the side of the battery slot.



3. Gently push the battery pack into the slot until it clicks. The battery pack is inserted. You can lock the battery pack in place by pushing the left battery latch in the direction shown above. If you hear a click, the battery pack is locked in.

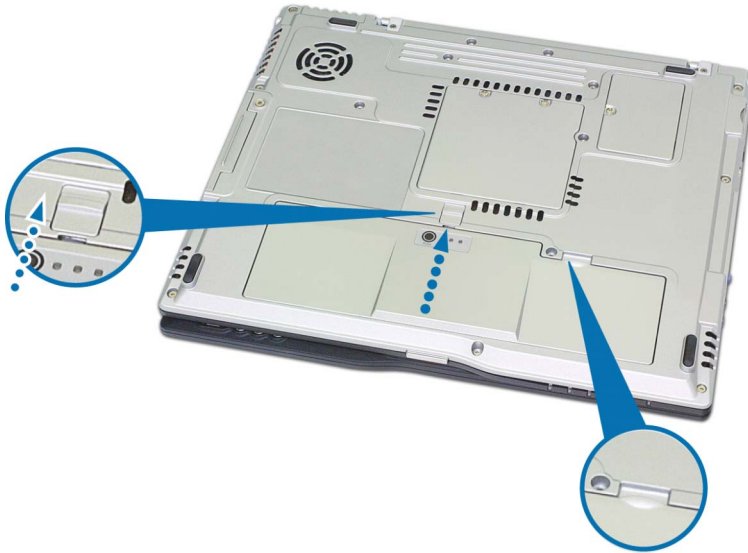


4. Connect the AC adaptor and open the LCD panel. The battery is charged automatically right after connecting. (Refer to Page 38 "Using the AC adapter")
5. Check the battery status indicator.



If the battery is fully charged, the indicator is green light.

- To remove the battery pack, unlock the left battery latch to the right until it clicks, and push the right battery latch to the left and hold; then slide the battery pack out of the slot.



### Caution

When you are not using the computer, remove the battery pack.

### Note:

Battery LED

When pressing [PUSH] button, 3 LEDs are turned on and brightened by charging the battery.

In the case of exchange the battery on standby mode.

- Possible to change the battery when using AC adapter.
- Possible to change the battery depends on the system activation when using the battery only without AC adapter.

\* System is running (Power indicator LED: Green ):

Impossible to change the battery. There is the risk of losing data.

\* Standby mode (Power indicator LED :Green blinking): Possible to change the battery.

\* But in standby mode, if the battery is removed for a long time, the system is off and the data is blow up. So, there is the available time to change is limited to 1 minute.

\* If the battery is left for a long time without charging, then after charging the battery for more than 12 hours, the battery change is possible.

\* Hibernation mode / Windows off mode: (Power indicator LED off): Possible to change and there is no limit in time.

Maximum power-saving mode / Turn off computer

No time limit to change the battery.

### **Note:**

#### **The battery pack has the following characteristics.**

Self-discharge: The battery gradually loses its power over time without ever being used.

Periodic full discharge/charge: Frequent recharging of the battery pack can reduce the duration of the battery pack. Periodic performance of full discharge/charge will restore the capacity of the battery pack, in every 30 ~ 60 days. You should use the battery until its power is low; then fully charge the battery.

#### **To use the battery pack safely and effectively,**

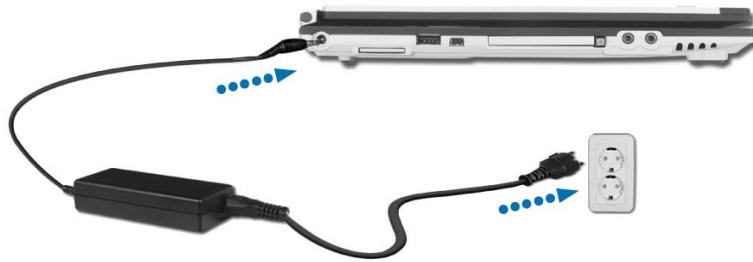
- Do not short-circuit the battery pack.
- Keep the battery pack away from heat or fire.
- Do not disassemble the battery pack.
- Do not expose the battery pack to water.
- Keep the battery pack away from children.
- If the temperature of the battery pack drops below 50 °F (10 °C), the trickle charging begins. The trickle charging may take up to 16 hours for the battery pack to be fully charged

## Using the AC adapter

An AC adapter or battery pack is needed to supply power to your computer. The AC adapter can be used with a 100~240V AC power source. Use only the AC adapter that comes with your computer. Using any other adapter may cause damage to your computer.

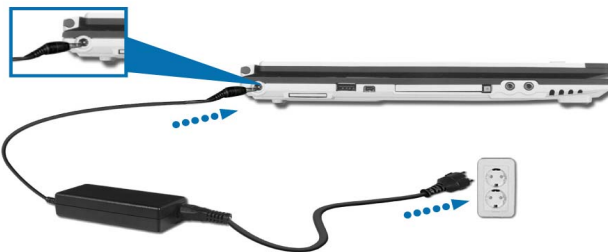
### Connecting the AC adapter to an AC outlet (100~240V)

Connect the power cord to the adapter, and then plug the other end into an AC outlet.



### Connecting AC adapter to the power device

Connect AC adapter to the power device at the left side of the computer.

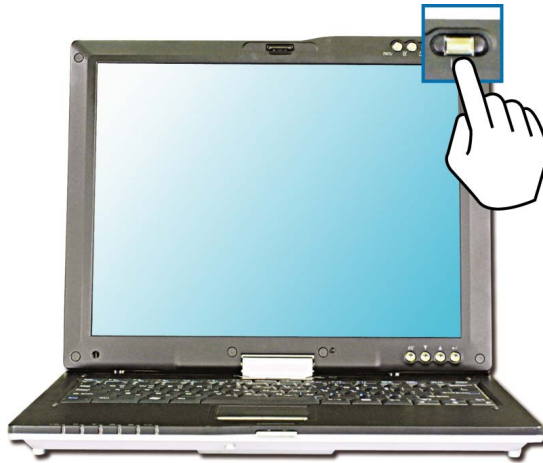


## Opening and positioning the LCD panel

Push the latch button, and open the display panel. Adjust the slope of the display panel for comfortable viewing. (Refer to page 24)

## Power On

Press the power switch to turn on the computer.

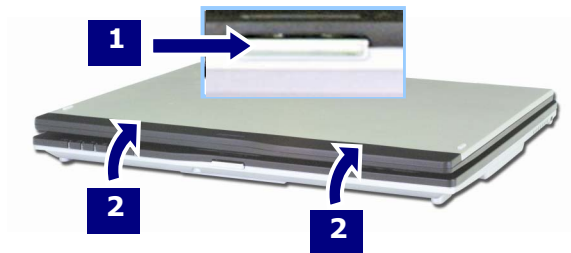


## Turning the power on and off

Before turning on the computer, make sure the AC adapter is connected or the battery is charged.

## Turning on the computer

1. Push the latch button to the right **1** and open the display panel **2**.



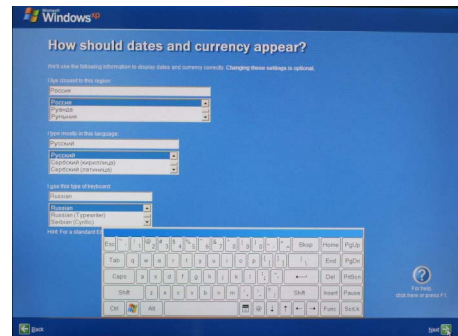
2. Press the power switch.



**Note:**

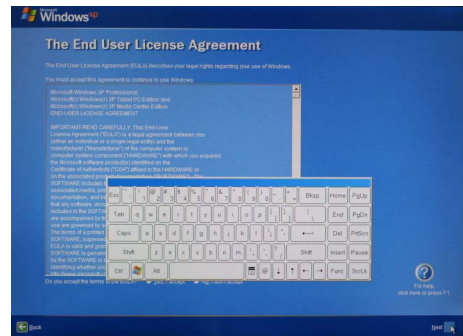
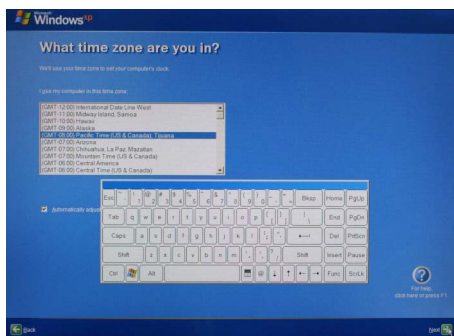
The power switch has an option to protect for pressing as user's disposal.

3. Pressing the power switch starts the self-diagnostic procedures; then Windows(R) XP startup screen is displayed.
4. If you turn the power on the computer for the first time, you have to register your copy of Windows XP. The registration process may differ depending on the model, but the difference does not affect the use of your computer.
5. In a moment, 'Welcome to Microsoft Windows' appears on the screen. Click [Next].



6. "How should dates and currency appear?" appears on the screen. Select region, language, and keyboard type on each box. Click **[Next]**

7. "What time zone are you in?" appears on the screen. Select time zone you are in, and click **[Next]**



8. 'The End User License Agreement' appears on the screen. Be sure to read the agreement, select 'Yes, I accept', and click **[Next]**

9. 'What's your computer's name?' appears on the screen. Type the name and description of your computer, and click **[Next]**.

10. 'Ready to register with Microsoft?' appears on the screen. Select 'No, not this time' and click **[Next]**.

11. 'Who will use this computer?' appears on the screen. Type the names of the users and click **[Next]**.
12. 'Thank you!' appears on the screen. Click **[Finish]** to complete the registration process.

### Turning off the computer

Quit all running applications; click **[Start]** and choose **[Turn Off Computer]** from the start up menu.



In the Turn off computer window, choose Shut down.



The computer is turned off automatically.



### **Caution**

If the Drive in use indicator is on, do not turn off the computer, as doing so may damage the data being read from or written to the drive.



### **Warning**

If Windows does not shut down correctly, press and hold the power switch for more than 5 seconds; the system will shut down. Turning off the computer this way may damage the system. It is recommended that you always turn off the computer by choosing Shut down in the Start menu.

If the computer does not shut down correctly while running applications, the data in the hard disk drive may be damaged.

If a program does not respond, press the Ctrl+Alt+Delete combination to start the Task manager; then quit the program or restart the system.

If Windows or program file is damaged by shutting down the system incorrectly, reinstall the program. The user is responsible for the loss of data caused by incorrect use of the computer.



# Using Windows XP

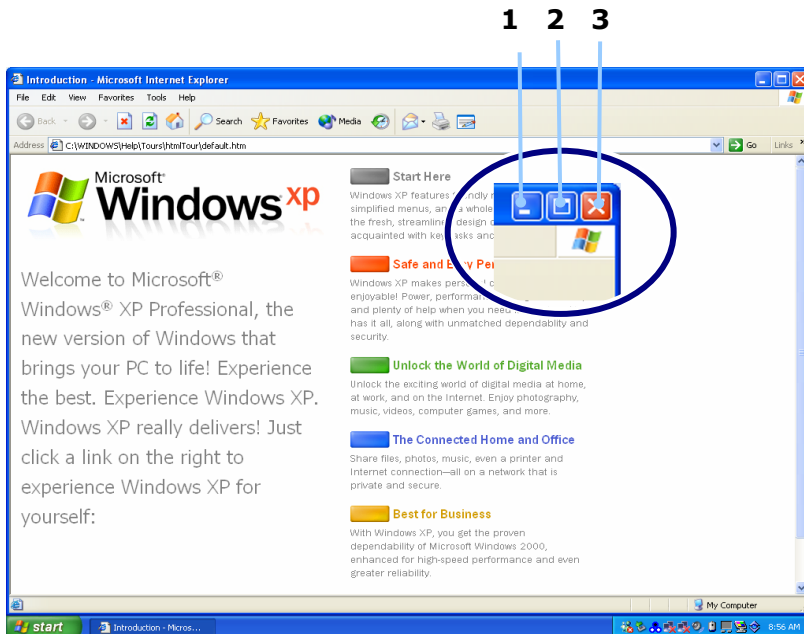
Windows XP is new, brilliant and easy-to-use. Background and title bar have been rearranged concisely, and it became easier to access the application programs from the start menu. Also, it allows the users with more diverse options to choose from when decorating their desktop.

## Overview

Windows XP is an operating system that runs a computer. Learning the basics features in Windows is recommended to utilize a computer effectively. Click **[Start]->[Tour Windows XP]** to explore the features and tools available in Windows XP.

### Window Buttons

1. Minimize
2. Maximize
3. Close

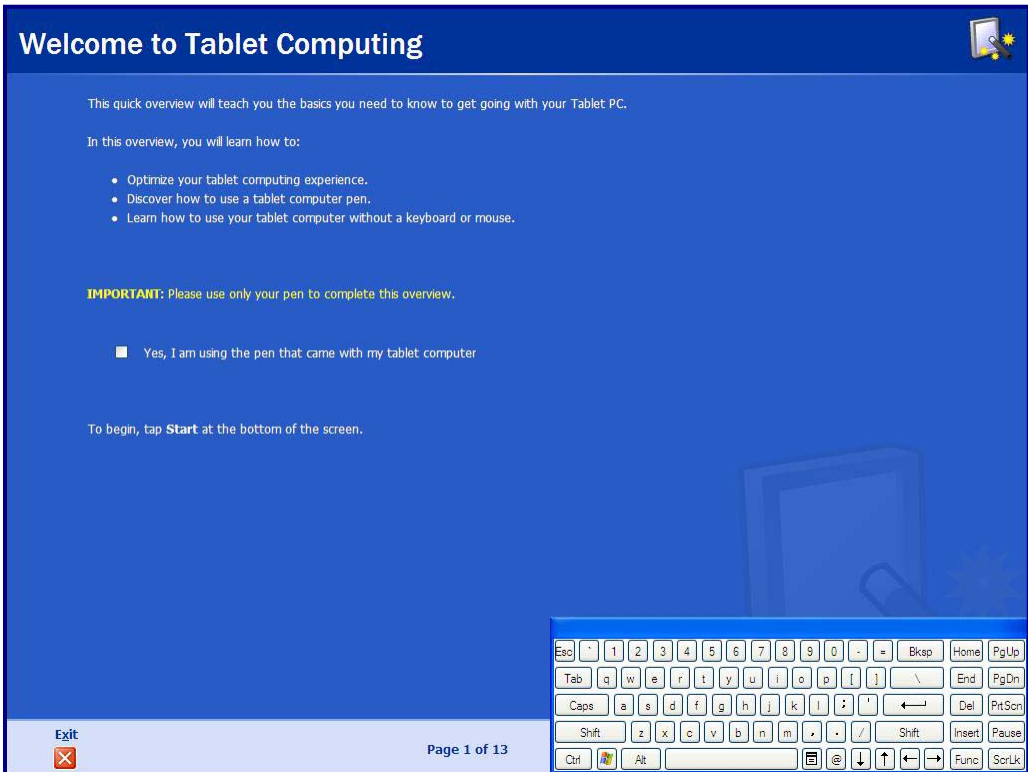


# Using Tablet PC

The users can learn how to use tablet PC basically in this section. Read following contents before you use.

## Overview

Learning the basics features in tablet PC is recommended to utilize a computer effectively.



Click [Start]-[All Programs]-[Get going with Tablet PC].

If the following window appears, it is available to get descriptions about the function of Tablet PC.