

## Using Tablet PC Tutorials

When using Tablet PC, it is very convenient to work.

### Tablet PC Tutorials

1. Click **[Start]-[All Programs]-[Tablet PC]**, and choose one of items.



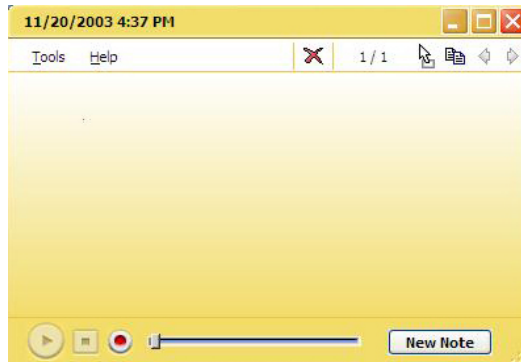
2. When checking up other functions, click other Tablet PC Tutorials.

# Using Tablet PC application programs

## Sticky Notes

Sticky Notes has the function as convenient as normal notepad to save personal information (name, phone number, address, etc.), and the function of recording voice message.

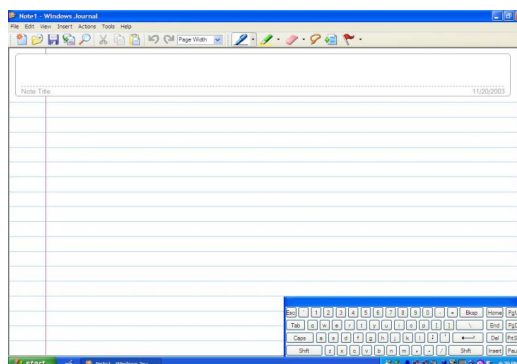
Click [Start]-[All Programs]-[Sticky Notes]



## Windows Journals

Click [Start]-[All Program]-[Windows Journals]

(\* Press the button **Windows Journal** on LCD Panel)



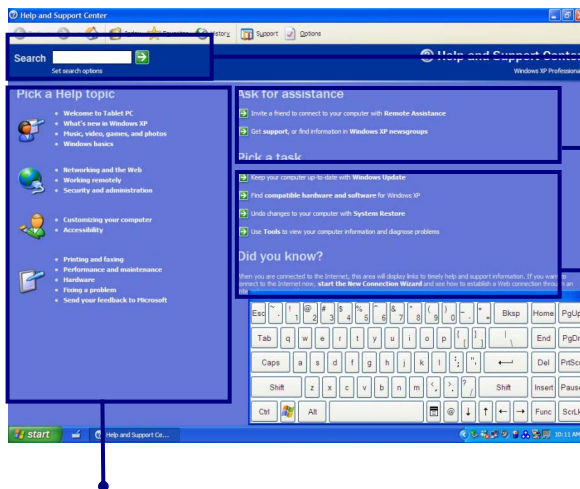
## Help and Support

Click **[Help and Support]** to learn how to troubleshoot problems you may encounter while using the computer.

Click **[Start]->[Help and Support]**.



The following window appears.



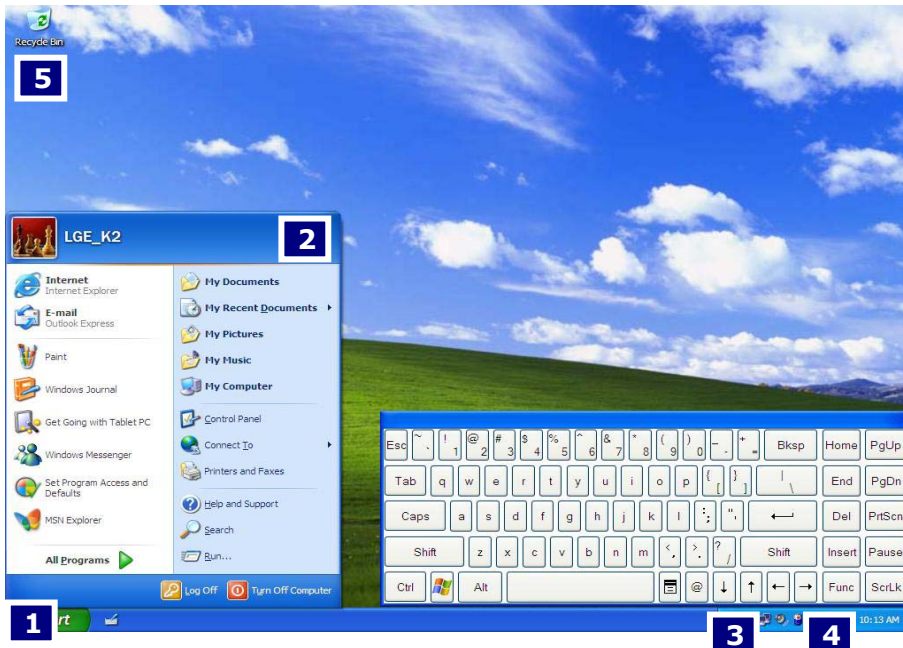
You can search for useful Help and Support information.

You can connect to the Internet and ask for assistance online.

You can setup and configure your computer to personalize your computing environment

Click to learn the features and troubleshooting information

## Windows XP desktop



### 1. [Start] button

Click **[Start]** button to open the **[Start]** menu. Click **[All Programs]** to open the list of programs installed in the computer.

### 2. [Start] menu

**[Start menu]** shows everything you need to start working in the Windows XP environment.

### 3. Taskbar

Taskbar shows programs that are currently open and running.

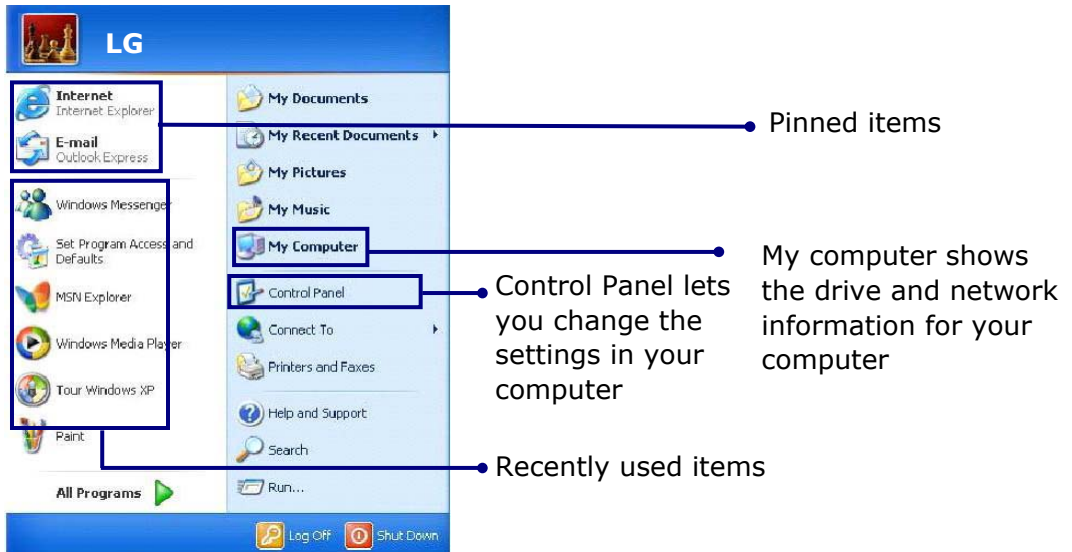
### 4. Taskbar icons and clock

Taskbar icons show and let you configure ongoing activities such as battery power status, display properties, LAN settings, etc.

## 5. Recycle Bin

Put your unused items and files in the Recycle Bin. Right-click the Recycle Bin and select **[Empty Recycle Bin]** to permanently delete the items inside the Recycle Bin.

## Start menu



## Changing the look of the Start menu

Right click **[Start]** button and select **[Properties]**.

In the Start menu tab, choose from either Start menu or Classic Start menu. Click **[OK]** to apply the new setting.

## Changing the pinned items in the Start menu

Right-click the item you want to pin it to the Start menu.

Select **[Pin To Start Menu]**.

The item is pinned at the top of the Start menu.

## Showing the recently used items on the Start menu

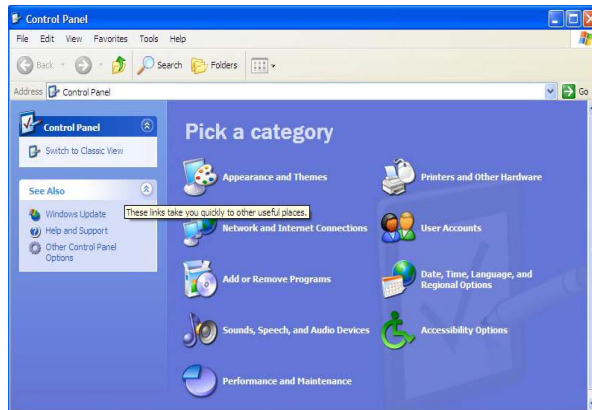
Right-click on **[Start]** button and click **[Properties]**.

In **[Start Menu]** tab, select **[Start menu]** and click **[Customize]**.

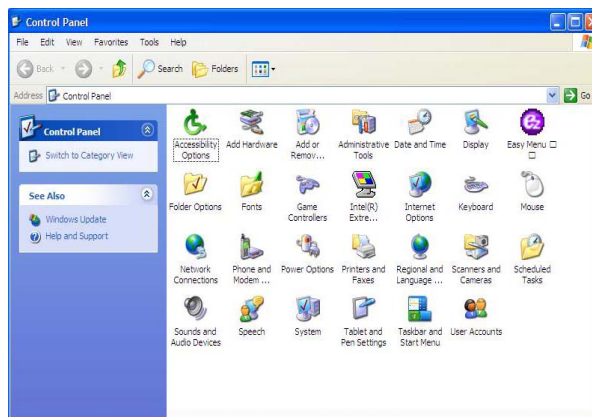
In **[Advanced]** tab, check **[List my most recently opened documents]** and click **[OK]**. In Taskbar and Start Menu Properties window, click **[Apply]->[OK]**. If you click **[Start]** button the next time, recently used items appear on the Start Menu.

## Control Panel

The Windows XP Control Panel can display items in either Category View or Classic View.



Category View



Classic View

## Setting up Local Area Network (LAN) connections

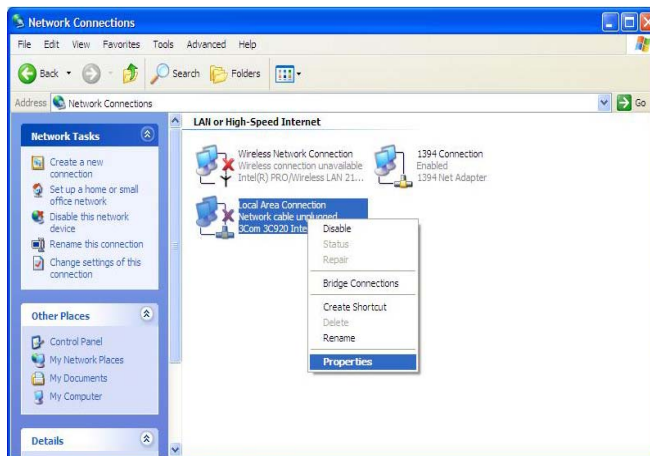
Local Area Network (LAN) connection provides high-speed network connection for your home or company.

Attach a LAN cable to the Ethernet (LAN) port.

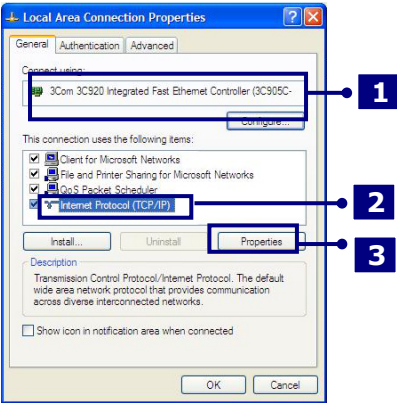
Click **[Start]->[Control Panel]->[Network Connections]**.



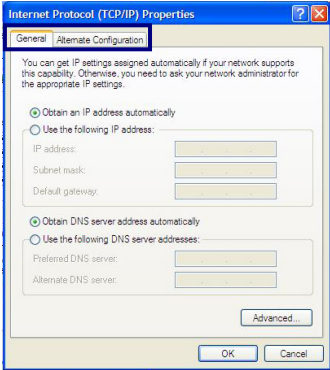
Right-click a Local Area Connection and select **[Properties]**.



If the following window appears, click **[General]** tab and **1.** check if 3COM 3C920 Integrated Fast Ethernet Controller is installed in the computer **2.** Then, check Internet Protocol, and **3.** click on **[Properties]**



Click on **[General]** tab, and Select **[Obtain an IP address automatically]**



Click **[Ok]** when Internet protocol (TCP/IP) setting is completed.

**Note:**  
Ask your network administrator for the appropriate IP settings.



## Using Wireless LAN

You can use Wireless LAN to connect to the network and use the Internet in your home and office. You can share files and folders over the network without the attaching network cables to the computer. For saving power, Wireless LAN is set up as power off when shipping. When using the wireless network devices (LAN/Bluetooth), use them on Easy Menu after turning on the wireless device.

### Connecting and using the wireless network

Right-click the Wireless network icon on the Taskbar and select **[View available wireless network]**.

Select AP(Access Point) you want to connect to and type necessary information. Click **[Connect]**.



If you place the mouse pointer on the Wireless network icon on the Taskbar, you can see the status of the wireless network.

## Using IP Operator

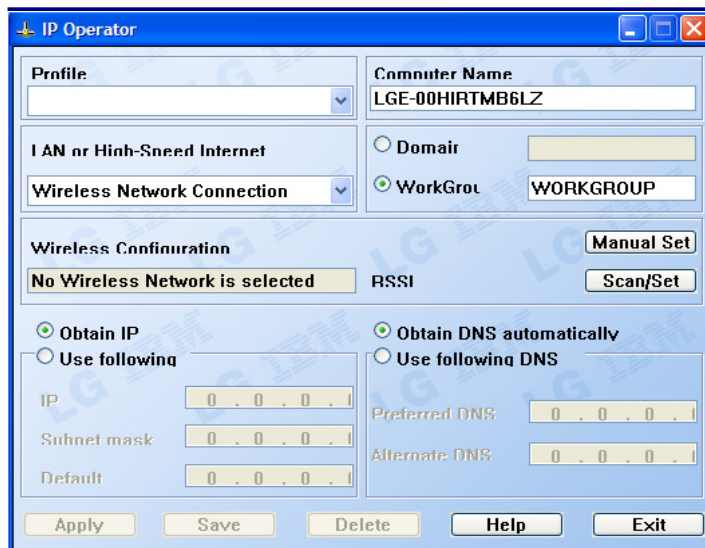
IP Operator is useful to access to network everywhere by notebook. User access to network at the several places (Home, Office, and Vendor etc.) can save and modify the network environment (IP address, Domain, Workgroup).

For more detailed information, refer to **[IP Operator]**.

Double click **[IP Operator]** icon on Desktop System tray.



If the following window appears, select LAN or High-Speed Internet at the drop down menu and type the computer name you use.



Type the name is appropriate at **[Profile List]** after making a decision whether a

user belonging to **[Domain]**, or a member of **[Work Group]**.

Choose one of setting options as below.

When setting **[Obtain an IP address automatically]**,

- IP address, Subnet mask, Default Gateway windows are changed the color as grey automatically.

When setting **[Use the following IP address]**

- Insert IP address, Subnet mask, Default Gateway window. Then, insert DNS Server.

Click the **[Profile Save]** button when finishing inserting items in **[Profile List]**

### Note:

When setting **[Obtaining an IP address automatically]**, it is unavailable to insert IP address, Subnet mask, and Default gateway.

When pressing **[Profile Apply]**, no items appear at **[Profile List]**.

If a user needs to apply the specific item, select one of items at **[Profile List]**, and click **[Profile Apply]**.

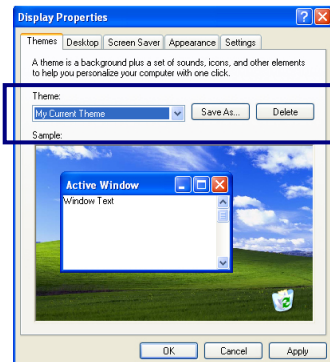
## Changing the Themes and Desktop background

### Using the Windows Classic Theme

Click **[Start]->[Control Panel]->[Display]**.

Click **[Themes]** tab

Select **[Windows Classic]** from the **[Theme]** drop down menu.



## Using a different theme

1. Click **[Start]->[Control Panel]->[Display]**.
2. Click **[Themes]** tab
3. Select another theme from the **[Theme]** drop down menu.

### Note:

In Appearance tab, you can click **[Advanced]** button and change the color scheme, font size, and windows and button styles.

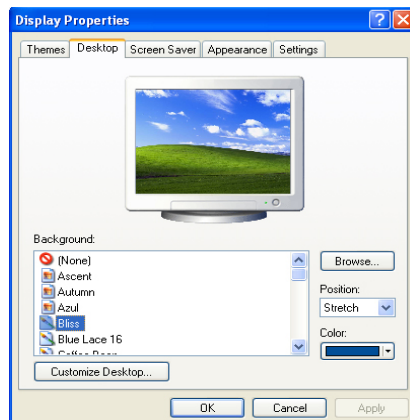
In Themes tab, you can change the overall appearance of the desktop.

If there is more than one user using the computer, each user can apply different theme and desktop appearances.

## Changing the desktop background

Click **[Start]->[Control Panel]->[Display]**.

Click **[Desktop]** tab. (OR you can right click on the mouse while in desktop background. When a short cut menu pops up, choose **[Properties]**)

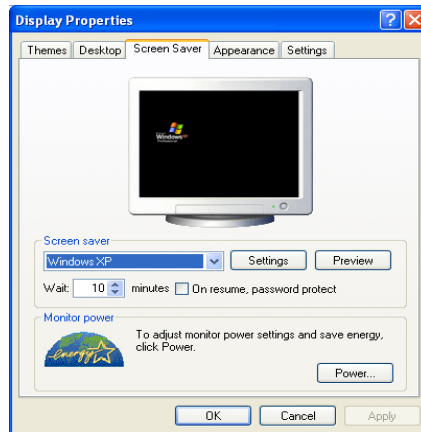


Scroll down the **[Background]** drop down menu and select an image for the background. You can also click **[Browse]** button and select an image you have saved.

## Setting the Screen Saver

Click **[Start]->[Control Panel]->[Display]**.

Click **[Screen Saver]** tab.



Select the idle time before activating the Screen Saver from **[Wait]** drop down menu. Check **[On resume, password protect]** to protect the computer from unauthorized users.

## Taskbar

Taskbar displays programs and files that are currently open. If there are many programs running on the computer, the Taskbar group together files from the same program to prevent taskbar icons from cluttering up the Taskbar.



## Desktop cleanup

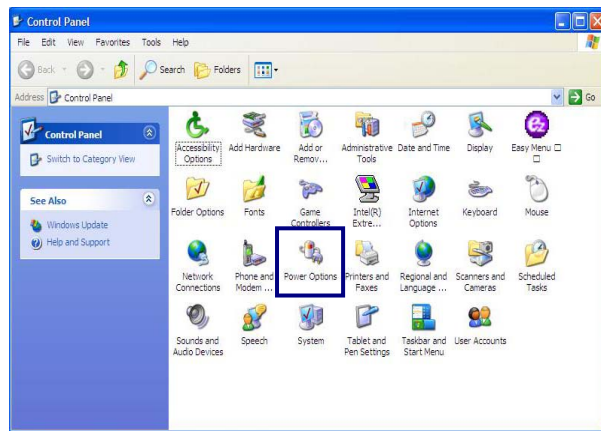
Desktop Cleanup Wizard removes unused desktop items to a folder. The Desktop Cleanup Wizard runs every 60 days but you can also run it manually.

1. Click **[Start]->[Control Panel]->[Display]**.
2. Click **[Desktop]** tab.
3. Click **[Customize Desktop] -> [Clean Desktop Now]** button.

## Using the Power Options

Windows XP uses its own power-saving program to manage the battery power.

Click **[Start]->[Control Panel]**. Double-click **[Power Options]**.

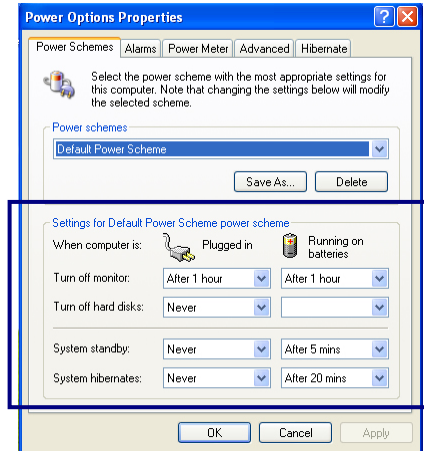


In Power Options Properties window, change the settings best suited for your computing environment.

## Power Options Properties

Click **[Power Schemes]** tab.

Drop down the menu and select **[Portable/Laptop]** to set notebook PC with the appropriate power schemes. This includes detailed timeline for **[Turn off monitor]**, **[Turn off hard disks]**, **[System standby]**, and **[System hibernates]**.



### Note:

If the computer enters System standby mode, the hard disk is turned off to conserve the battery power.

In System standby mode, you cannot save your work. Be sure to save your work before entering System standby mode.

When the computer enters System hibernation, the computer saves all your work in the hard disk and turns off the computer.

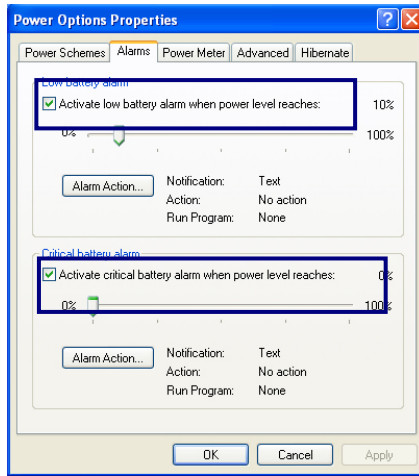


### Caution

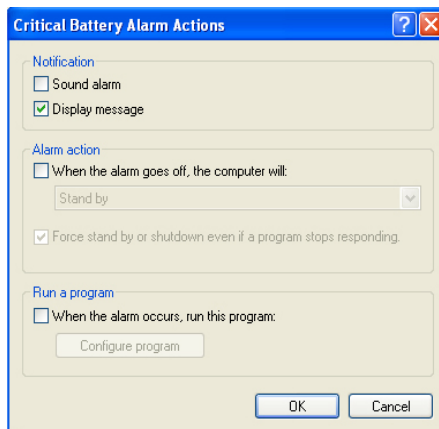
If the computer enters System standby or hibernation mode while playing a computer game, a serious error may occur. Be sure to quit the computer game before entering a power-saving mode.

## Power Options Properties

Click **[Alarms]** tab. Check **[Low battery alarm]** and **[Critical battery alarm]**, and move the sliders to set the power level to activate low battery alarm and critical battery alarm.



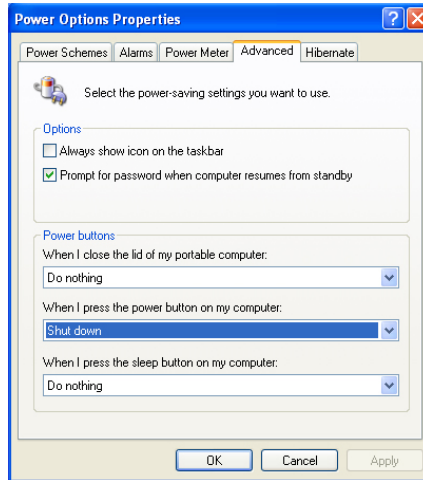
You can be notified with Sound alarm or Display message. You can also set the alarm action such as putting the computer into System standby mode or System hibernation mode. You can also run a specific program when the alarm goes off.





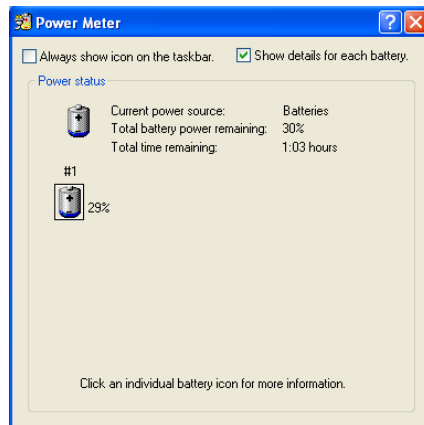
## Advanced tab

In Options, you can set the computer to prompt for password when computer resumes from standby. You can also set the computer to enter a power-saving mode when closing the display panel, pressing the power switch or the combination of Fn+F4.



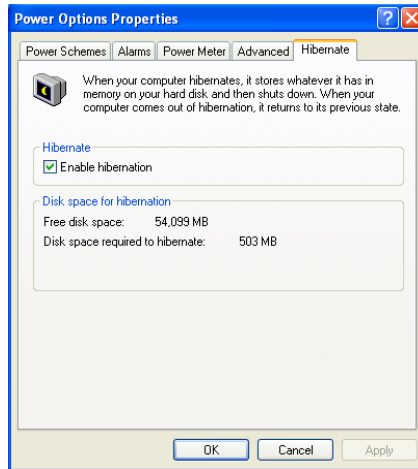
## Power Meter

You can click the Power Meter icon on the Taskbar to check the power level of your computer.



## System Hibernation

In Hibernation tab, you can enable or disable System hibernation mode and check the disk space needed for hibernation.



### Caution

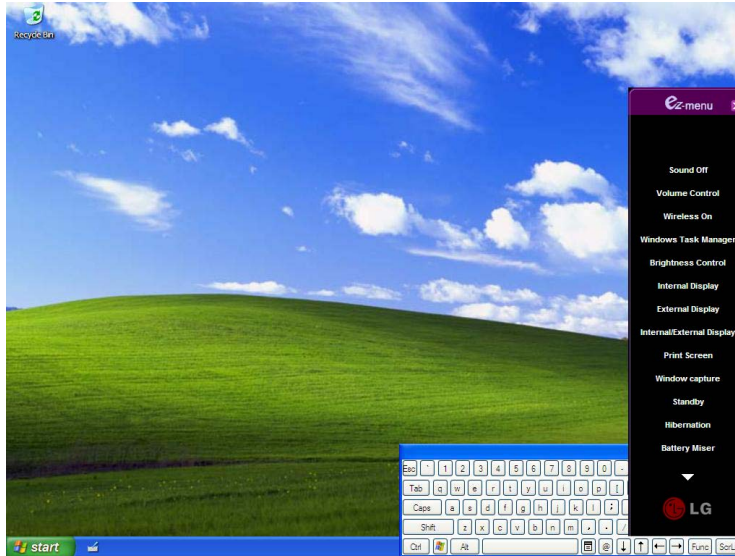
Do not remove the battery pack when the AC adapter is not connected to the computer.

If you keep using the computer while low on the battery power, you may lose the data when the battery power goes out. If you are notified of low battery power, save your data and connect the AC adapter, or turn off the computer and change the battery pack.

## Using ez menu

To use ez menu is helpful for using Tablet PC.

Click **[Start]-[All Program]-[Easy Menu]**, Or use ez menu button on LCD Panel.



Note:

When pressing a triangle on lower column of ez menu, added menu will appear.

**Sound On/Off:** Turning sound on and off.

**Volume Control:** Adjust volume by using Up/Down button on LCD Panel

**Wireless On/Off:** When turning wireless off, it's available to extend the battery power.

**Windows Task Manager:** Running Windows Task Manager.

**Brightness Control:** Adjusts brightness of the screen by using Up/Down button on LCD Panel.

**Internal Display:** Using internal display.

**External Display:** Using external monitor that connected to VGA port at the back of the computer.

**Internal/External Display:** Using both Internal Display and External Display.

**Print Screen:** Capturing the whole desktop screen as an image. It's possible to edit and paste on the graphic program after the capture.

**Window Capture:** Capturing activated window.

**Standby:** Entering into standby mode.

**Hibernation:** Entering into hibernation mode. When pressing the power switch on hibernation mode, it comes back as a normal.

**Battery Miser:** Running Battery Miser for setting up the power option.

**Tablet PC Settings:** Running the program for Tablet and Pen Settings.

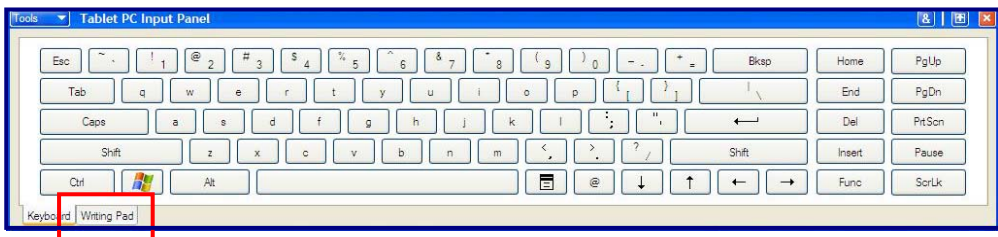
**Easy Menu Settings:** User can modify, add, and delete Easy Menu Item conveniently.

## Using pen to input (attached pen in tilt / offered extra pen)

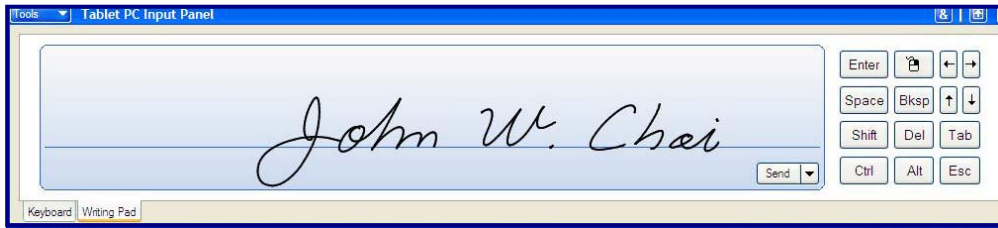
It's possible to input letters by using pen.

### Using pen to input (When inputting on notepad)

1. Tap Tablet PC icon on taskbar. Tablet PC Input Panel will appear.
2. Tap [Writing Pad] after running notepad.

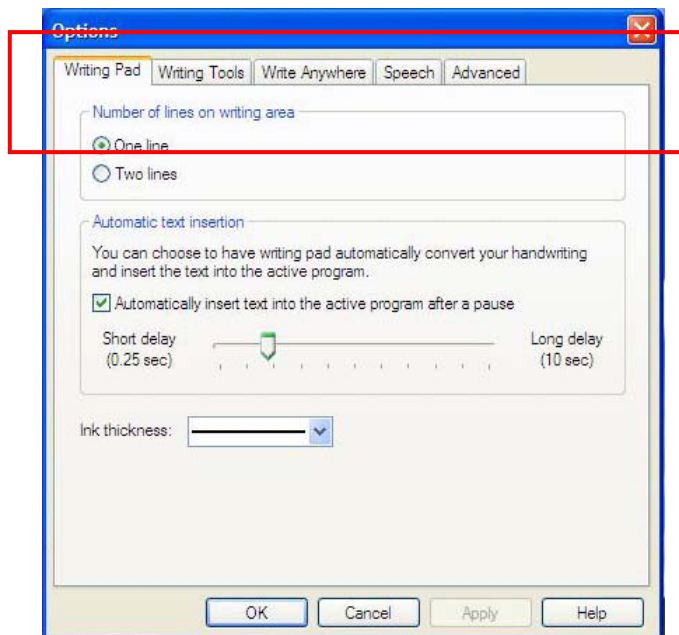


3. Write any letters on Writing Pad window.
4. Texts appear on notepad.



## Defining font size

Press [Tools], and select [Options].  
Define font size at [Number of lines on writing area].



## Attaching external devices

### Attaching a USB device



USB mouse (not included)

You can connect to keyboard, hub, digital camera and other devices that support USB.

### Attaching an external monitor

**Note:** Turn off the computer before attaching an external monitor. Use a standard VGA connector that should be 16mm wide. Connectors wider than 17mm will not fit in.



External monitor  
(not included)

Monitor toggle function (switch the monitor by short-cut keys)  
After install the external monitor to the notebook PC, use Fn + F7 to switch the main monitor to LCD only, monitor only, and LCD + monitor both, in sequence.

### Attaching an IEEE 1394 device (Option)



Digital Camera  
(Purchased separately)

You can attach IEEE 1394 devices such as external hard disk drive or CD-RW drive, MP3 player, digital camera, and video camcorder.

### Using Battery Miser

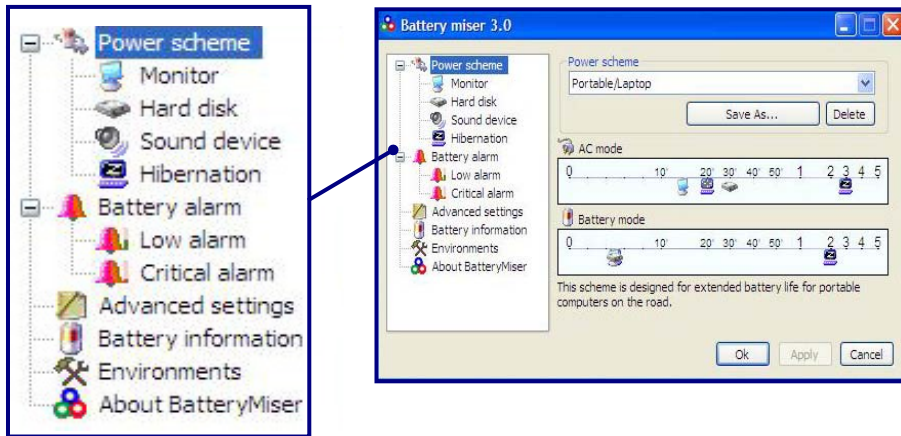
Battery Miser is the program to manage energy saving function makes the battery of notebook computer maximum. When using Battery Miser, it is available to use both original power management functions of Windows and the advanced power management functions of battery miser.

For more detailed information, refer to **[About Battery Miser]**

Double click **[Battery Miser]** icon on Desktop System tray.



Battery Miser main screen appears as below.



**Power scheme:** The group that manages the power to reduce power consumption of computer peripheral units.

**Battery alarm:** If the battery power gets down to low alarm, critical alarm, user can define the option for alarm is working.

\* **Note:**

\* When pressing the keys Fn + F8, it keeps unused sound device power management(Sound device is always ON).

\* When pressing one more, it return to the original set point.

\* When pressing the keys Fn + F9, it keeps unused Monitor power management(Monitor is always ON).

\* When pressing one more, it return to the original set point.



## Using the keyboard

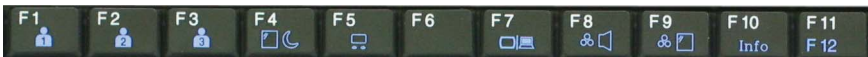
The keyboard is used for entering text and commands in the computer.

### Component

The keyboard is composed of character, number, and other special function keys.



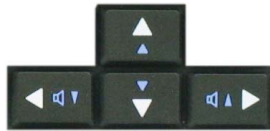
**Function keys:** Function keys enable you to perform different operations depending on the operating system and application program you use.



**Hot keys:** Hot keys (shortcuts) are used in conjunction with Fn key to provide shortcuts for some of the predefined operations, such as entering power-saving mode.



Cursor control keys: You can move the cursor in the direction of the arrows.



Editing keys: You can move the cursor to the beginning or end of the current line, or up and down the screen.



Character and number keys: consist of character keys, number keys, special character keys, and spacebar. Spacebar is used for creating a space between characters.



Embedded numeric keys: You can press the combination of Fn and ScrLk keys to enable the embedded numeric keypad. Num Lock indicator lights up and enables you to use the embedded numeric keypad shown below. You can press the combination of Fn and ScrLk keys again to disable the embedded numeric keys.





## Caution

Do not spill water, juice, coffee, etc on the keyboard as it may damage the computer and cause an electric shock.

## Note:

In the middle of entering characters, if numbers are entered instead of characters, press the combination of Shift and ScrLk to disable the embedded numeric keys.

## Modifier and special function keys



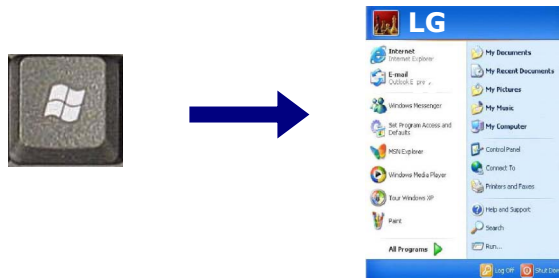
- 1. Shift key:** Hold Shift key down and press another key to enter the upper case letter for the key.
- 2. Caps Lock key:** Press Caps Lock key to lock the keyboard in the upper case position. When the Caps Lock indicator lights up, you can press another key in combination with Shift to enter the lower case letter for the key.
- 3. Esc key:** Use Esc key to quit programs or cancel a operation in a program.
- 4. PrtSc (Print Screen) key:** Press PrtSc key to take the snapshot of the entire

area visible on your screen and store it in the clipboard.

- 5. Enter key:** Press Enter key to enter a command or to end a line.
- 6. Shortcut menu key:** Press Shortcut menu key to view shortcuts for the current program. (Shortcut menu key works the same as the right-clicking the mouse button)



**Windows(R) key:** Press Windows key to view the Start menu.



**Note:**

You can lock the keyboard in the upper/lower case position by pressing Caps Lock key. Caps Lock indicator lights up in upper case position. You can use the combination of Shift and a character key to enter its upper/lower case letter.

## Hot keys

The following Hot keys provide you with shortcuts to operations, such as adjusting the brightness of the computer display.

**Fn+F1 :** User-defined Hot key. (Setting is available at OSD)

**Fn+F2 :** User-defined Hot key. (Setting is available at OSD)

**Fn+F3 :** User-defined Hot key. (Setting is available at OSD)

**Fn+F4:** Force the computer to enter power-saving mode. (ex: system standby and hibernation)

**Fn+F5:**

Press the combination once to disable the touch pad, and press again to enable the touch pad. (The touch pad initialization takes 1~2 seconds, so wait for the Initialization to end before using the touch pad)

**Fn+F7:**

When the computer is attached to an external monitor, you can change the display output location with Fn+F7 combination. You can switch to and from the three types of display modes, LCD display only, the external monitor only, or both at the same time.

**Fn+Home:**

The computer display becomes darker.

**Fn+End:**

The computer display becomes brighter.

**Fn+F8:**

Enable/disable Auto Sound power management (battery mode only). Refer to Battery Miser Help.

**Fn+F9:**

Enable/disable Auto Brightness control. Refer to Battery Miser Help.

**Fn+F10:** System Information

**Fn+Esc :** Maximum power-saving mode. (when OSD is installed)

Fn + ScrLk/Num Lk: Number lock

Fn+Delete : Insert

**Fn+↑:** Scroll Up

**Fn+↓:** Scroll Down

**Fn+→ :** Volume Up

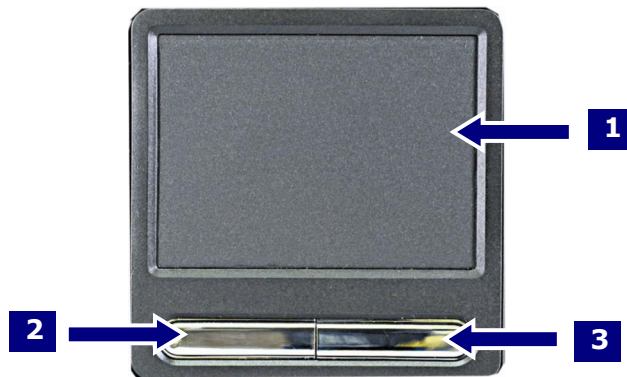
**Fn+← :** Volume Down

Fn+F11: F12

Fn+PgUp : Prt SC

Fn+PgDown : Pause

## Using the touch pad (Mouse)



The touch pad can be used with a mouse at the same time. It has a scroll button, which functions similar to a scroll wheel on a mouse.

1. Touch pad: used to move the pointer.
2. Left button: used to select or click items.
3. Right button: functions similar to the right button on a mouse.



### Caution

#### **Guidelines on using the touch pad**

Do not touch the touch pad with a sharp or pointed object as doing so may damage the touch pad.

Do not remove the cover sheet of the touch pad as doing so may damage the touch pad.

Do not use the touch pad with two fingers, wearing gloves, or wet hand as it may not function correctly. Using the touch pad with a dirty or oily finger may damage the touch pad.

Do not exert too much pressure on the touch pad as doing so may result in injuries to your finger or wrist.