

User's guide	7
Important Safety Instructions	8
Selecting a place to work	8
Using the battery pack	9
Replacing and disposing of the backup (standby) battery	10
Connecting to an AC power source	11
Using the computer	12
Using the computer	13
Upgrading the computer	15
Upgrading the computer	15
Carrying and storing the computer	16
Preventing data lose (handling hard disk drives)	17
Ergonomic information	18
For Australian Users	19
Laser compliance statement	20
Overview	21
Package contents	21
Components	22

Front view	22
Rear view	23
Left view	23
Right view	24
Status indicators	24
Using LCD panel	26
Opening LCD Panel	26
Using Tablet mode	26
Using notebook mode	29
Using Screen rotation	30
Using Touch panel	32
Using Pen (attached pen in tilt / offered extra pen)	33
Exchange the pen point (offered Full size digital pen)	37
Basics	39
Using the battery pack	39
Using the AC adapter	43
Connecting the AC adapter to an AC outlet (100~240V)	43
Connecting AC adapter to the power device	43
Opening and positioning the LCD panel	44
Power On	44
Turning the power on and off	44
Turning on the computer	44
Turning off the computer	47
Using Windows XP	49
Overview	49
Using Tablet PC	50
Overview	50

Using Tablet PC Tutorials	51
Tablet PC Tutorials.....	51
Using Tablet PC application programs	52
Sticky Notes	52
Windows Journals	52
Help and Support	53
Windows XP desktop	54
Start menu	55
Changing the look of the Start menu	55
Changing the pinned items in the Start menu	55
Showing the recently used items on the Start menu	55
Control Panel	56
Setting up Local Area Network (LAN) connections.....	57
Using Wireless LAN	59
Connecting and using the wireless network	59
Using IP Operator	60
Changing the Themes and Desktop background	61
Using the Windows Classic Theme.....	61
Using a different theme	62
Changing the desktop background	62
Setting the Screen Saver	63
Taskbar.....	63
Desktop cleanup.....	63
Using the Power Options.....	64
Power Options Properties.....	64
Power Options Properties.....	65
Advanced tab.....	67
Power Meter	67
System Hibernation	68
Using ez menu	68
Using pen to input (attached pen in tilt / offered extra pen).....	70

Using pen to input (When inputting on notepad)	70
Defining font size.....	71
Attaching external devices	72
Attaching a USB device	72
Attaching an external monitor	72
Attaching an IEEE 1394 device (Option).....	73
Using Battery Miser.....	73
Input/Output.....	75
Using the keyboard.....	75
Component.....	75
Modifier and special function keys	77
Hot keys	78
Using the touch pad (Mouse).....	80
Moving the pointer on the screen	81
Making the selection (Click)	81
Double-click (Run).....	82
Drag and drop.....	83
Using the scroll up/down function	85
System Setup.....	86
Starting the system setup.....	86
Keys used in the system setup	86
Setting a password	87
Setting a supervisor password	88
Setting a user password	89
Changing or removing the password.....	90
Recovering the factory default settings	91

System Recovery.....	92
Using Full Recovery	92
Driver Installation.....	96
Installing memory	97
About memory	97
Before installing memory	97
Purchasing memory	98
Installing memory	98
Inserting SD Memory Card.....	101
Removing SD Memory Card.....	101
Features.....	102
Model	102
Processor	102
Memory	102
BIOS ROM	102
Storage devices.....	102
External I/O Interfaces.....	103
Display	103
Sound.....	103
LCD.....	103
Modem.....	103
LAN	103
Power specification.....	104
AC Adapter (Free Voltage)	104
Battery Pack (Li-Ion).....	104
Charging time	104
Battery Life.....	104
Backup (standby) battery	104
Operating environment.....	105
Operating	105

Non-operating105

Thank you for using the LG product.

LG has manufactured and tested this product to provide you with a reliable computing environment.

Please read this manual carefully before using the computer.

The following signs call attention to features and operations that may be dangerous to the user. Follow the instruction closely to reduce the risk of physical harm or damage to the equipment.



Danger: Not following the instruction will result in immediate death or serious injury.



Warning: Not following the instruction could result in death or serious injury.



Caution: Not following the instruction could result in minor or moderate injury and/or damage to the product.

Microsoft, MS, MS-DOS, and Windows are trademarks of Microsoft Corporation in the United States and/or other countries.



LG is a trademark of LG.

Copyright 2003 LG Electronics, Inc., DigitalMate Co., Ltd.

Information in this manual may include technical inaccuracies or typographical errors. Images in this manual are for illustrative purposes only and may be different from the actual product.

LG reserves the rights to make improvements and/or changes to the product without notice.

Reproducing any or all of the information contained in this publication without written permission is prohibited.

Your computer complies with the radio frequency and safety standards of any country or region in which it has been approved for wireless use.

Important Safety Instructions



These safety instructions will ensure many years of safe enjoyment from the product. Set up your computer on a flat, stable surface. (LG is not responsible for the problems and damages caused by incorrect use of the computer in an unsafe environment.)

Selecting a place to work



Warning

Do not operate your computer near water; for example, in a bathroom or near a

The computer may not function correctly, and there is the risk of electric shock. Operate the computer within a temperature range of 50 to 95 degrees F (10 to 35 degrees C) and 20 to 80% of relative humidity.

Safely dispose of the packing materials, such as desiccant and plastic bags. Children may swallow desiccant or suffocate from plastic bags.



Caution

Keep your computing environment clean and free of dust. There is a risk of dysfunction to the computer.

Keep your computer away from electromagnetic fields. Exposure to the electromagnetic field may result in loss of data in the hard disk drive and/or damage to the LCD.

Do not block the fan louvers and leave enough space around the computer for ventilation. The computer may overheat and result in fire or injuries.

Using the battery pack



Warning

Use only a battery pack recommended by LG.
Using a battery pack of a different type may result in explosion.

Keep metallic objects, such as keys and clips, away from the battery pack.
Objects that conduct electricity can short-circuit the battery pack and result in fire and/or injuries.

Keep the battery pack away from heat.
There is a risk of explosion or fire.

Do not short-circuit battery terminals.
There is a risk of explosion.

Do not subject the battery pack to temperatures above 140 degrees F (60 degrees C).
There is a risk of explosion or fire.

Keep the battery pack away from children and/or pet.
There is a risk of injury and damage to the battery pack.

Do not put the battery pack in the water.
There is a risk of fire or damage to the battery pack.
Be cautious when handling the keen part of the battery pack hook.
It may hurt you.

Lock the Notebook locker at the bottom surface.
There is a risk of battery damage.

Replacing and disposing of the backup (standby) battery



Warning

If the backup battery is incorrectly replace, there is danger of explosion.

The lithium battery contains lithium and can explode if it is not properly handled or disposed of.

Replace only with a battery of the same type.

باطری ذخیره (یدکی) را با نوع درست آن عوض کنید.
خطر انفجار وجود دارد.
باطری های ذخیره های (یدکی) استفاده شده را بر اساس دستور العمل داخلی مصرف کنید.
مصرف باطریهای نادرست منجر به انفجار یا آتش سوزی میشود.

غير البطارية البديلة على الطراز المناسب.
و هناك احتمال الانفجار.
تخلص من البطاريات البديلة المستعملة حسب القوانين والأنظمة المحلية.
البطاريات المتخلص منها بصورة غير مناسبة قد تؤدي الى انفجار او احتراق.

Connecting to an AC power source



Warning

Do not use loose or damaged power plugs.
There is a risk of electric shock or fire.

Use properly grounded outlet.
Connecting the computer to an outlet without proper grounding may result in electric shock and damages to your computer.

Do not touch or grab the power plug with wet hands.
There is a risk of electric shock.

Hold the plug body when removing the power cord from an outlet.
There is a risk of fire and damages to the computer.

Use your computer at the proper voltage/current level indicated.
Supplying improper levels of voltage/current may result in electric shock, fire, and/or damage to the computer.

If you hear a noise from the power cord or outlet, unplug the power cord immediately, and contact the customer service for help.
There is a risk of fire or electric shock.

Make sure the power plug fits snugly into the electrical outlet.
Loose fit may result in fire.

Do not bend or place a heavy object on top of the power cord. Keep the children and pets from damaging the power cord.
Damaged power cord may result in electric shock or fire.

Keep the power cord and plug clean and free of dust.
There is a risk of fire.

If an object or liquid enters the computer or an adapter, remove power cord, battery, and any other cables from the computer, and contact the customer service for help.

There is a risk of an electric shock, fire, or damage to the computer.

Before cleaning the computer, disconnect the power cord, battery, and any other cables from the computer.

There is a risk of electric shock or damage to the computer.

Using the computer



Warning

For cleaning your computer, use mild detergent or computer cleaning products.

Using the computer without completely drying it may result in electric shock or fire.

During a lightning storm, disconnect the power cord, telephone line, and LAN cable from the computer.

There is a risk of electric shock or fire.

Do not place water, chemicals, or liquid of any kind on the computer.

Liquid of any kind entering inside the computer may result in an electric shock, fire, or damage to the computer.

Do not connect the modem directly to a multi-line telephone.

There is a risk of fire or damage to the computer.

If you drop your computer, remove the power cord and battery pack, and then contact the customer service for check up.

There is a risk of electric shock or fire.

Do not place a burning candle or cigarette on the computer.

There is a risk of fire.

If you see or smell smoke from the computer or adapter, turn off the computer, remove the power cord, and then contact the customer service for help.

There is a risk of fire.

The LCD monitor's fluorescent lamp include hydrargyrum.

Avoid direct contact with liquid from the broken LCD. If it spills into eyes or the other parts of your body, wash it out several times with clean water. If you feel something different, contact a doctor or a health administrator immediately.

Using the computer



Caution

Do not place an object, such as a pen or clip, on the keyboard.

If you close the LCD cover with an object on the keyboard, you may damage or break the LCD.

Do not touch or scratch the LCD with sharp objects.

The LCD may be damaged.

Be sure to turn off the computer before closing the LCD cover.

The computer may overheat, and be damaged or deformed.

Do not exert excessive pressure on the LCD.

LCD is made of glass, and an excessive force can break the LCD.

Follow the instructions in the user's guide.

There is a risk of damage to the computer.

Do not place objects into the PC Card slot.

There is the risk of electric shock or injury.

Upon completion of any service or repairs, ask service technician to perform safety checks.

Ignoring safety checks may result in electric shock or fire.

Use the Wireless LAN at least 5m away from a microwave oven or plasma lamp.

When using the Wireless LAN near a plasma lamp, use the channel 11, 12, or 13. the connection may be unavailable or slow.

Keep the computer away from heat. The computer may deform and there is the risk of fire.

When attaching an external device, make sure the connector from the device and the port on the computer are of the same type.
There is a risk of damage to the computer.

Do not insert a damaged CD-ROM or floppy disk.
There is a risk of damage to the computer.

Upgrading the computer



Warning

Before disassembling the computer for upgrading purposes, turn off the power

There is the risk of electric shock or fire. If you need to open the computer cover, contact the customer service for help.

Keep screws and other small parts away from children.

Children may choke on a screw or other small part. If a child swallows a small part, receive a medical care.

Upgrading the computer



Caution

Do not attempt to disassemble or modify the computer without consulting

There is a risk of electric shock.

Replace only with the parts approved by LG.

There is a risk of fire and damage to the computer.

Consult with the customer service before connecting and using the computer with any non-LG product.

There is a risk of damage to the computer.

Carrying and storing the computer



Caution

Before moving the computer, turn the power off and remove all the cables. You may trip over the loose cables and fall.

When traveling on an airplane, follow the instruction by flight attendant. Using the computer on an airplane may result in an airline accident.

Do not travel with LCD monitor open.

Do not expose your computer to the direct sunlight in a closed area such as inside a car.

Prolonged exposure to high temperatures may deform the computer and also result in fire.

Preventing data lose (handling hard disk drives)



Caution

Be cautious when handling the hard disk drive.

The hard disk drive is very delicate to any physical impact. Always make backups for your data. LG is not responsible for the data lose caused by users.

The data on the hard disk or the drive itself may be damaged in the following situations:

1. Exposure to a physical shock during the disassembling or installing process.
2. The computer is reset (rebooted), for example by power outage, while the hard disk drive is operating.
3. Exposure to virus.
4. The computer is turned off during operation.
5. Exposure to a physical shock while the hard disk drive is operating.

To prevent data lose due to hard disk drive damages, always backup your data. LG is not responsible for the lose of data.

Ergonomic information



Warning

Adjust the display position to avoid glare or reflections from overhead lighting.

The top of the display should be on or below the level of your eyes.

Keep your head and neck in an upright position.

Keep your forearms, wrists, and hands in a horizontal position.

Adjust your chair to keep your arms and hands in a comfortable position.

Using the computer in the same position for a prolonged period of time may cause discomfort to your body.

Take short frequent breaks from working with your computer. No more than 2 hours of computing per day is recommended.

Stretch periodically to reduce muscular discomfort.

Check the volume level

Check if the volume level is too high before using headphones.

Do not use the headphones for a prolonged period of time.



Warning

For safety reasons, only connect equipment with a telecommunications compliance label. This includes customer equipment previously labelled or certified.

Laser compliance statement



An optical storage drive (device), such as a CD-ROM, CD-RW, DVD-ROM drive, which can be installed in this unit is a laser product. The driver's classification label is on the surface of the drive as shown below.

CLASS 1 LASER PRODUCT
LASER KLASSE 1
LUOKAN 1 LASERLAITE
APPAREIL A LASER DE CLASSE 1
KLASS 1 LASER APPARAT

The drive is certified by the manufacturer to comply with the requirements of the Department of Health and Human Services 21 Code of Federal Regulations (DHHS 21 CFR) Subchapter J for Class I laser products at the date of manufacture.

In other countries, the drive is certified to conform to the requirements of IEC825 and EN60825 for Class 1 laser products.



DANGER

Do not open the optical drive unit: no user adjustments or serviceable parts are inside. Use of controls, adjustments, or the performance of procedures other than those specified might result in hazardous radiation exposure.

Package contents

The following items are included in the package. Match the items on this list with the items in the box. Some items may look different from the pictures.



LT 20

Note: Make sure you have the correct AC adapter before connecting it to the computer.



Installation guide



power cord/AC adapter (65W) (Using offered cable)



Modem cable



Battery

- 21 -



Pen (offered Full size digital pen)

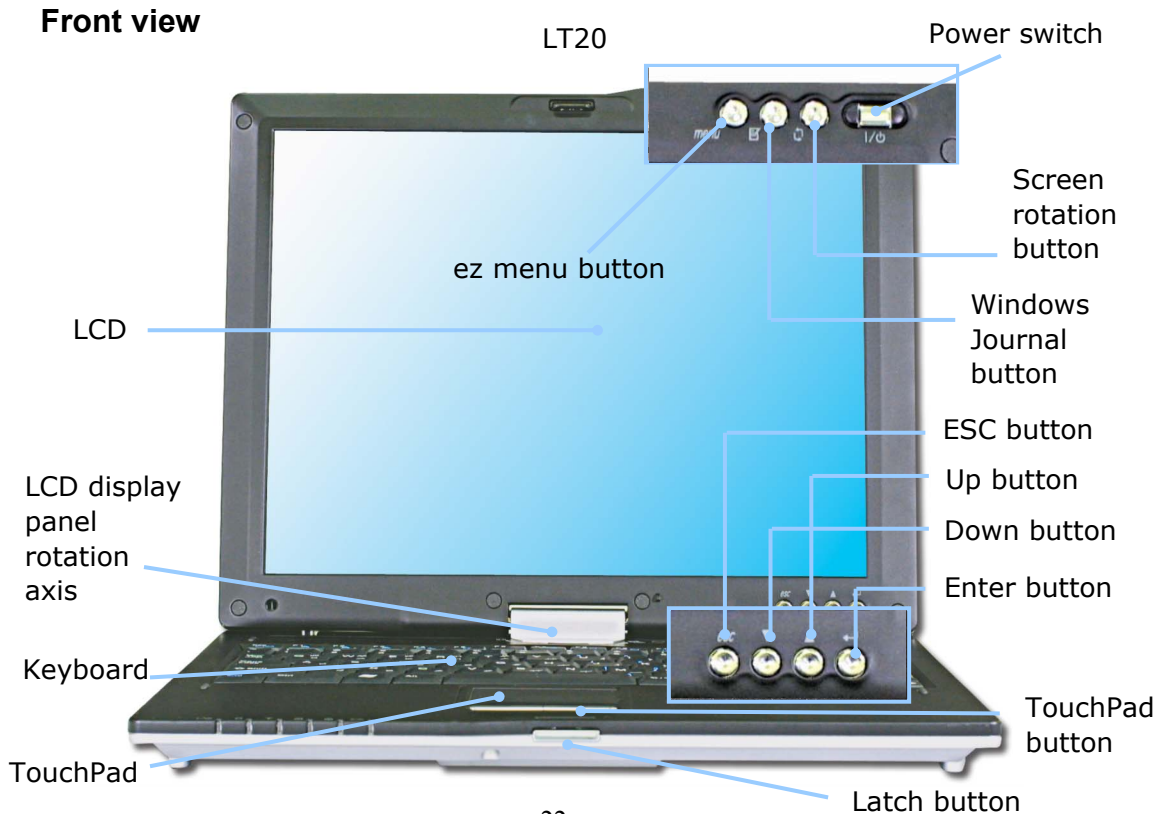


Caution

When cleaning your computer, use cleaning products manufactured specifically for computing equipment. Using abrasive chemicals, such as paint thinner, benzene, or alcohol, may damage your computer.

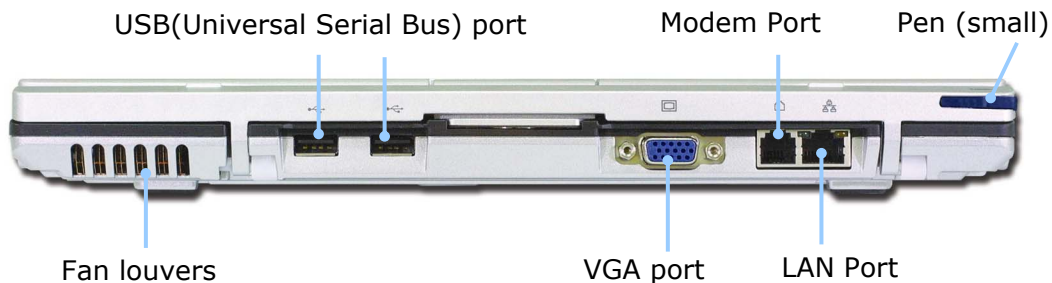
Components

Learning the components and their functions helps you to use the computer more easily and thoroughly.

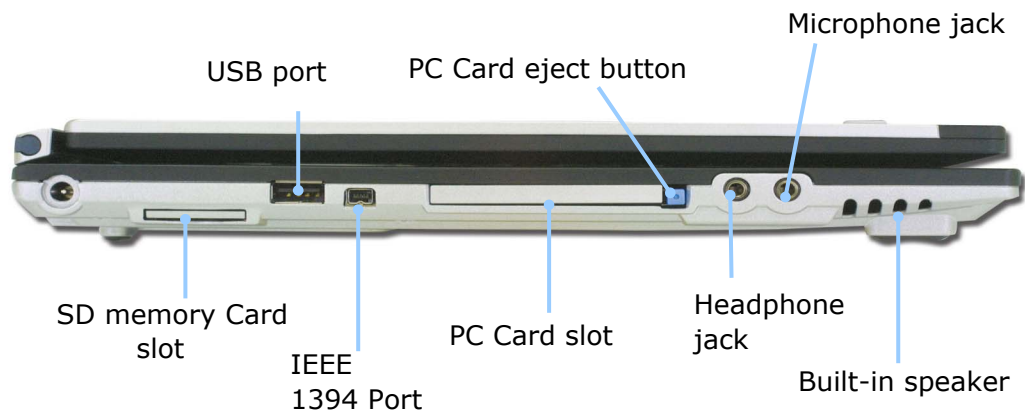


Note: ez menu button, Windows wordpad button, LCD rotation button, Power switch, Esc button, Up/Down button, and Enter button are coated for preventing static electricity purposes.

Rear view



Left view



Right view



Security key hole (Kensington Lock): User can attach a separately purchased chain lock into the security keyhole and connect it to a fixed object to prevent a notebook theft.

Status indicators

Note: Some models may look different from the picture below.



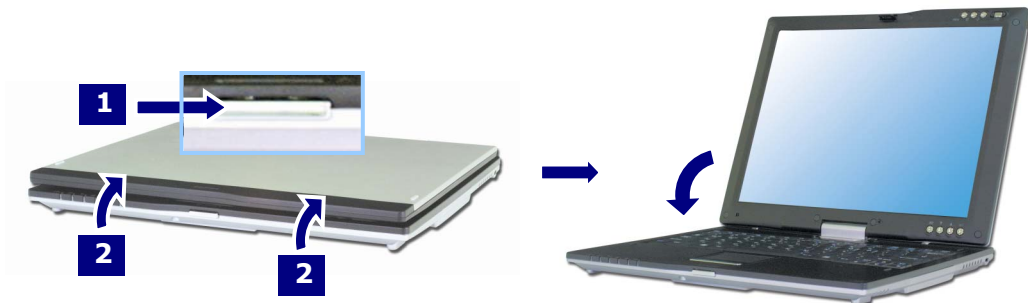
1. **Power:** Power status indicator indicates the following status of the computer.
Green: The computer is turned on.
Off: The computer is turned off or is in hibernation mode.
Blinking: The computer is in standby mode.
2. **Drive in use:** Drive in use indicator lights up when data is being written to or read from the hard disk.
3. **Wireless activity indicator:** Wireless activity indicator indicates the following.
Off: The wireless card does not have the power or RF is off.
Blinking: The wireless client is not associated with the network. Slow blinking (3-4 seconds interval): the wireless card powered on and attempting to connect.
Fast blinking: The wireless card transmitting and/or receiving data by the rate depending on blinking speed.
4. **Num lock:** Num lock indicator lights up when the combination of the Fn and Num lock key is pressed. When this indicator lights up, you can use the embedded numeric keys. (To use the numeric keys, you must enable the Internal Keypad setting under the Advanced menu in the BIOS Setup Utility)
5. **Caps lock:** Caps lock indicator lights up when the Caps lock key is pressed. When this indicator lights up, you can type capital letters without pressing the Shift key.
6. **Battery:** Battery status indicator indicates the following status of the battery.
Off: The computer is not connected to an AC adapter and the battery is discharged.
Amber (orange color): The computer is connected to an AC adapter and the battery is charged. (0% ~90%)
Amber and Green (blinking) : The battery is nearly full charged (90~100%)
Green: The computer is connected to an AC adapter and the battery is fully charged
Red: There is some problem in the battery.
Green blinking: The battery is fully discharged.
Green blinking for three times: The battery is fully discharged / Pressing the power button when system is off

Using LCD panel

LCD panel has the function of 180° rotation switching as tablet PC, and can be laid upward on the keyboard.

Opening LCD Panel

Push the latch button in the direction of the arrow **1**, and open the display panel **2**. Adjust the slope of the display panel for comfortable viewing.



Using Tablet mode

When using tablet mode, follow orders as below.

1. Open up LCD panel till the keyboard is 90°.





Warning

Do not prevent fan louvers when using tablet mode.
Internal temperature rise can be a risk of damage to the computer.

2. Push down the tilt at the back of computer as direction (white arrow).



Warning

Do not make LCD rotate without pushing down the tilt.
There is a risk of damage to the computer.

3. If LCD panel has 90° on the keyboard, rotate LCD as clock-wise to make an opposite side.

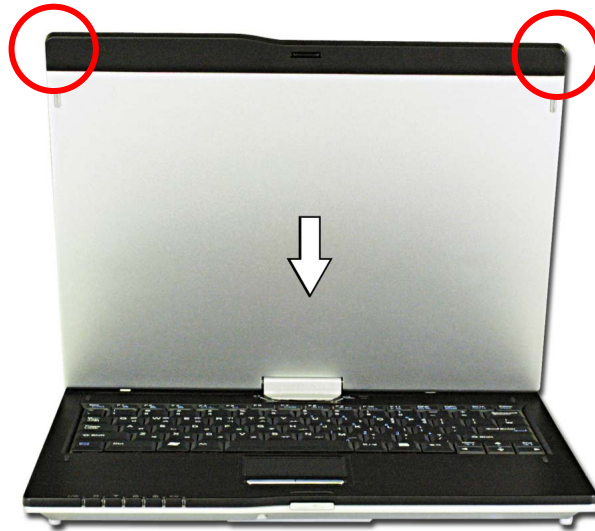




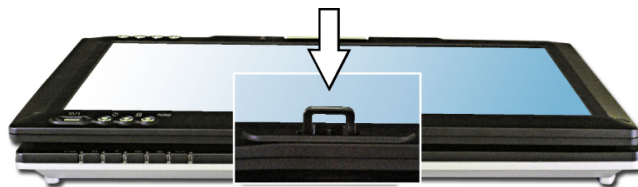
Warning

Follow up defined orders.
There is a risk of LCD Panel rotation axis crash when direction is different.

4. Pull down LCD panel to table PC body as direction (white arrow) with holding at the upper edge of LCD.



5. Fix the latch switch on LCD panel after folding as close to the keyboard completely.



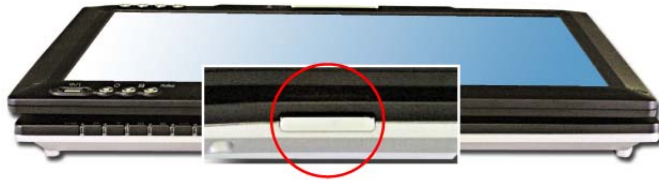


Warning

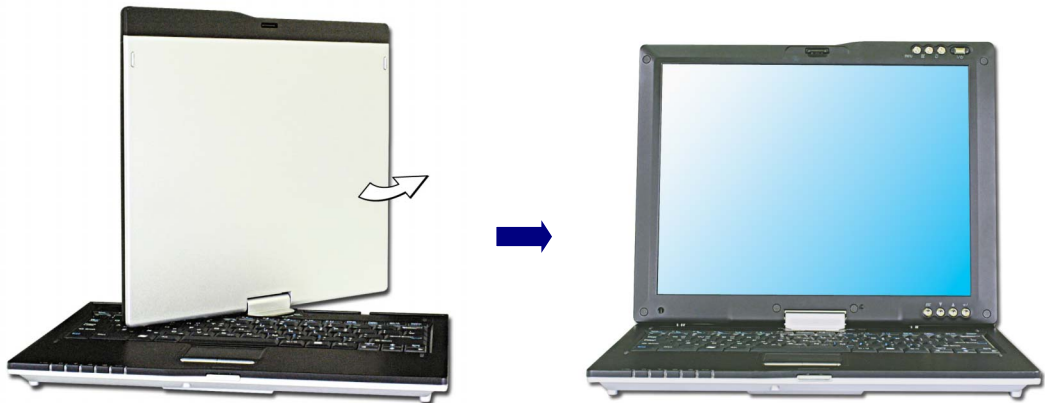
When using LCD as tablet mode, it can cause the button error.
When using tablet mode, do the lock device before using the computer.

Using notebook mode

1. If using notebook mode, lift up till LCD panel has 90° on the keyboard after pushing down the latch button.



2. If LCD has 90° on the keyboard, make it rotate as counter clock-wise.



3. Adjust the slope of the display panel for comfortable viewing after making a rotation completely.

Using Screen rotation

Screen rotation is the function can modify the direction of Desktop screen as the unit of 90°. Push the [Screen rotation] button on LCD panel.

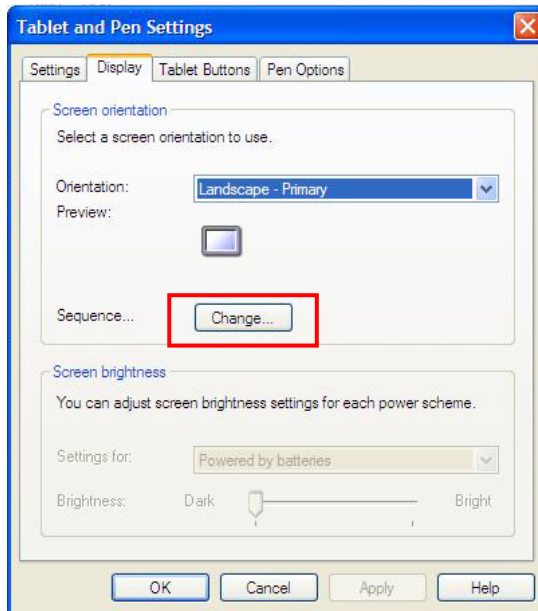


Warning

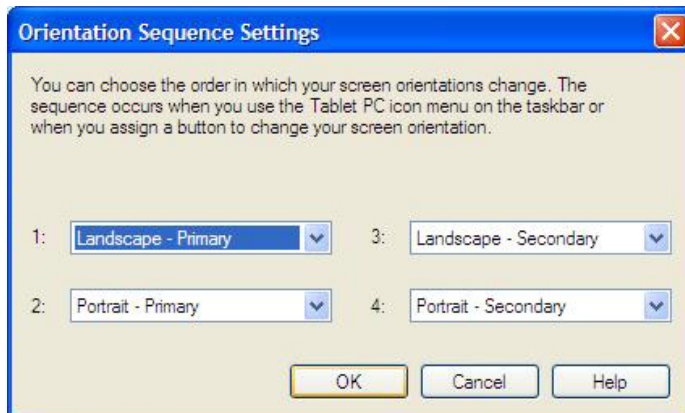
Do not modify screen resolution and color when using screen rotation.
Put the screen back in its place before modifying screen resolution and color.
When using screen rotation, application program (involved screen saver) might have problems as velocity display slow.
When turning ON/OFF, screen rotation is not working.

When modifying screen rotation button setting up

1. Go to [Control Panel]-[Tablet and Pen Settings]. Click [Change] at [Display tab].



2. Modify the screen direction at **[Orientation Sequence Settings]**, and click **[OK]**.

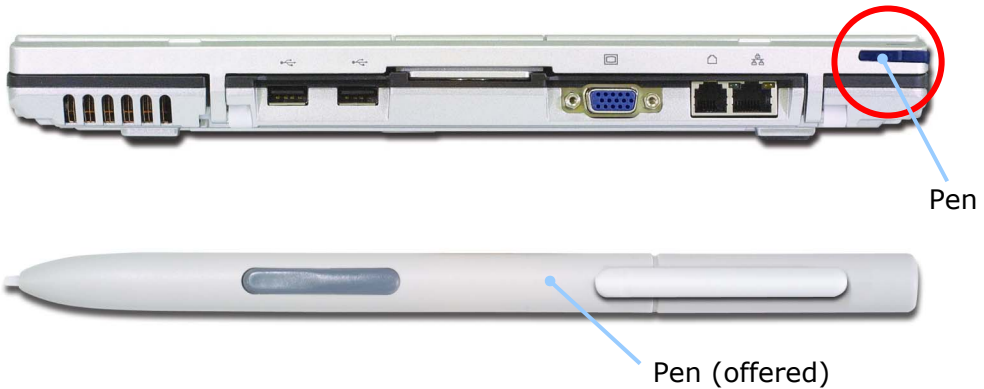


Using Touch panel

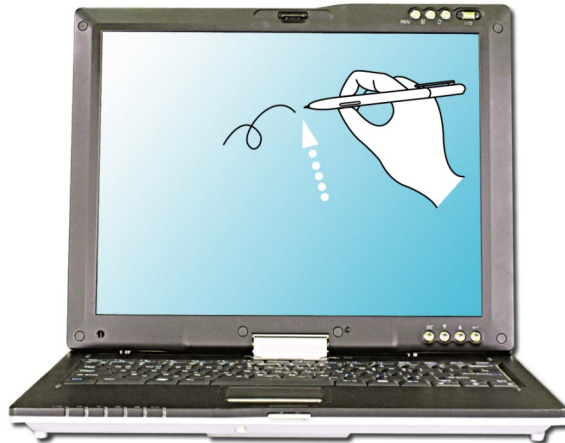
It is comfortable pointing device for using mouse pointer directly on the screen. Electromagnetic induction system touch panel attached on LCD panel is operated by offering pen, or attached pen at tilt.

It is easy and fast operation on the screen.

Use an attached pen at tilt, or offered pen from the product.



2. When moving a pen, pointer moves toward the direction of a pen.





Warning

Using a pen involved at tablet PC is strongly recommended. If using a pen is not from the product, it can be seriously a risk of damage to the computer. Do not put a pen strength on the screen. It is a risk of damage to touch panel, or LCD.

Puddle phenomenon appears on LCD is caused by being pressed down from using a pen

This is not serious phenomenon because it is restored to the former state automatically.

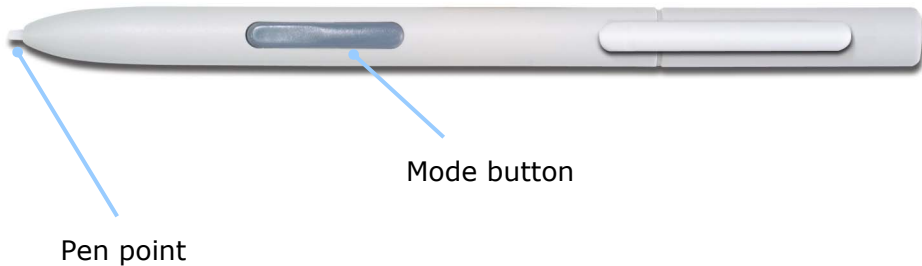
If the screen is distorted, or not restored to the former state, contact to Customer Service.

Put a pen back in its place after using.

Using Pen (attached pen in tilt / offered extra pen)

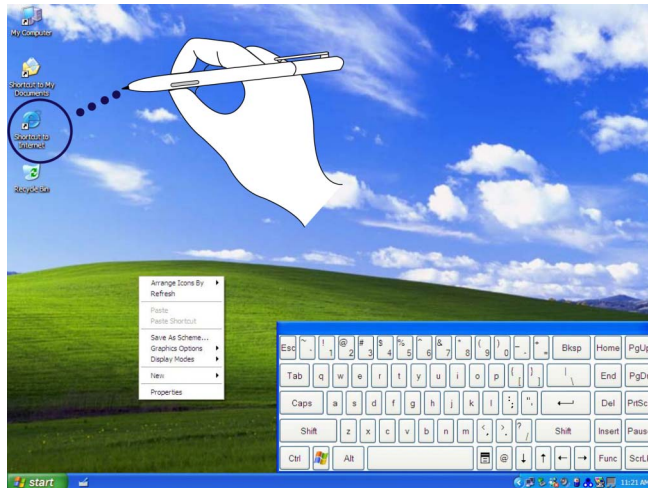
These pens have functions of controlling buttons, icons, and each application programs as using the mouse on the desktop.

When using the program has writing recognition, these are useful to write down on LCD directly, and treat as a drawing tool.



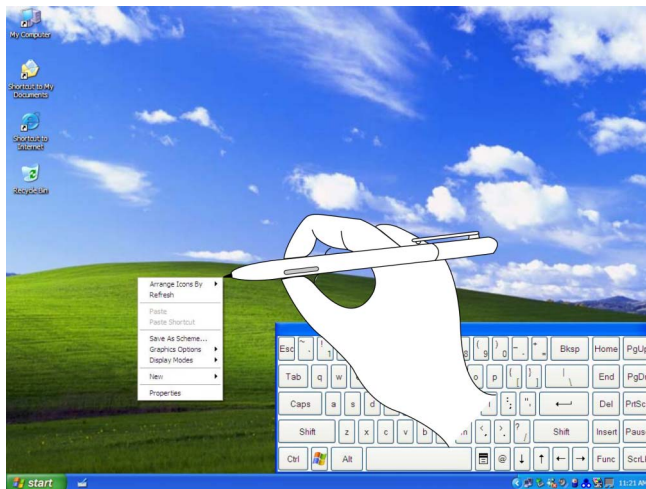
Tab

Click one of icons on the desktop screen. The same function as left click.



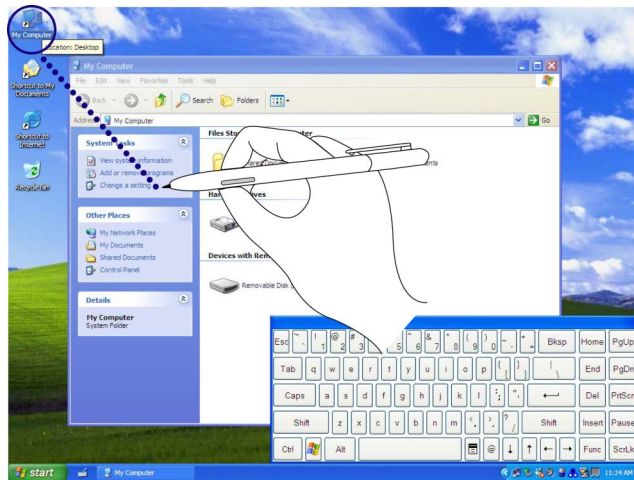
Right tab

Tab the screen with pushing button on the pen. The same function as right click.



Double tap

The same function as double click.



Point

Touch on the screen lightly.

